

IT'S TIME
TO STEP INTO
THE
EXTRAORDINARY.

ELEVATE YOUR EVERYDAY.

— WELCOME TO —

STAR
GAZE

— AT —

RIVALI
PARK
HUMAN. NATURE.

2 & 3 BED RESIDENCES



CONNECT AND DISCONNECT WITH EASE.



SERENE

A peaceful residential locality sheltered from the bustle of the city's commercial districts



CONVENIENT

Established schools, hospitals, retail and commercial centres meet your family's needs



BEST OF BOTH WORLDS

Borivali is one of the few suburbs with well-developed urban and natural zones



- Connectivity
- Educational institutions
- Hospitals
- Entertainment & recreation
- Commercial hubs



*Map not to scale

THE W.E. HIGHWAY IS A MAJOR ARTERIAL ROAD IN MUMBAI CONNECTING THE SUBURBS FROM DAHISAR TO BANDRA.



REACH HOME QUICKLY

Daily travel to the city and back is a breeze on this well-maintained highway



EXPAND YOUR TRAVEL OPTIONS

The project is well connected via rail, metro & road



EXPECT MORE

Upcoming infrastructure includes access to the Mumbai Coastal Road and upcoming Borivali-Thane Tunnel



EXPLORE BORIVALI

The W.E. Highway has made Borivali more accessible than ever, transforming it into a prime location for residential living

ELEVATE THE WAY YOU TRAVEL IN THE CITY.





LIVE IN THE CITY,
BUT NEVER AWAY
FROM NATURE.

SANJAY GANDHI NATIONAL PARK

A residence with a park view is the ultimate trophy asset in a world where open green spaces are a luxury. Think Hyde Park, London or Central Park, New York. In Mumbai, where concrete jungles are the norm, Stargaze boasts a prime location that few properties in the world can match: right opposite Sanjay Gandhi National Park. As park-facing residences grow rare, here's your once-in-a-lifetime opportunity to own an address that's good for the mind, body and investment portfolio.

- Over 21,000 acres of protected forest area
- An expansive canopy of green
- Hiking trails, picnic spots and waterfalls
- A cool microclimate for surrounding areas



BREATHE EASY

A zone of pure, fresh air - a welcome respite from the polluted city



NATURAL ENVIRONMENT

Abundance of wildlife and greenery counterbalances an urban lifestyle

A residence where city life meets nature for an out-of-this-world experience. Here's what makes STARGAZE the next step up for you.

HABITAT

2 & 3 bed residences near Sanjay Gandhi National Park

ARCHITECTURE

International design, premium finishes and efficient use of space for comfort and style

EXPERIENCE

A spectrum of amenities catering to the needs of every member of the family

VERSATILITY

Stay well connected to the city via W.E. Highway, rail, metro and East-West Connector

NATURE

Expansive greenery within the property in addition to the national park outside makes this residence one of a kind



Ground + 39 Floors including 5 Podia



Colonnade (Connected Grand Lobbies)



7 Levels of Parking



2 Acres of Central Landscaped Courtyard



Contemporary Design



Vastu Compliant



Modern Gated Community



International Consultants

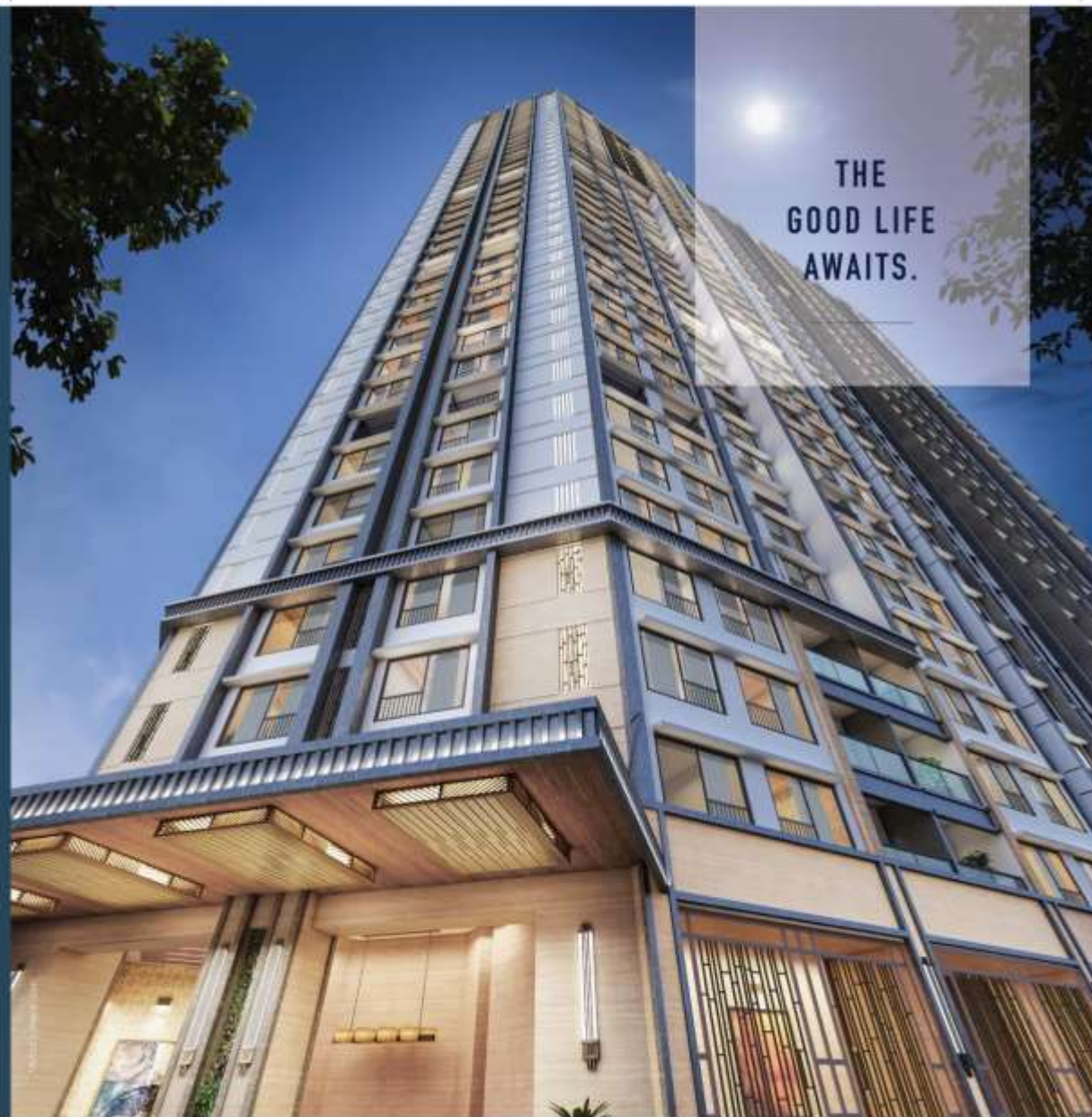


24 X 7 Security



Premium Finishes

Disclaimer set out on the last page are deemed to be incorporated herein. Please take your decision on information and brochures available at www.nature.com/real-estate/gov-mumbai for the name "Rishi Park - Stargaze" P018202019





MAKE
EVERY DAY
TRULY COUNT.

2+ ACRES OF AMENITIES WITH SOMETHING FOR EVERY MEMBER OF YOUR FAMILY. WHERE WILL YOU HEAD FIRST?



- Indoor games area
- Billiards/Pool
- Swimming pool
- Kids' pool
- Senior citizens' corner

- Landscaped garden
- Children/toddlers' play area
- Yoga/meditation/activity rooms
- Outdoor meditation area
- Gymnasium
- Reflexology path



- Jacuzzi
- Massage room
- Jogging track
- Rock climbing
- Multi-purpose hall/
- Function room/Banquet hall
- & many more

*The names of all the facilities on the last page are deemed to be recommended items. Please base your decision on information and brochures available on www.mahindra-real-estate.com under the name "Wood Park - Bangalore" P1800001076

OUR PARTNERS

**Architect
Hafeez
Contractor**

Architecture Design
Consultant

WME
egis
GROUP

Structure & MEP
Design Consultant



Vertical Transport
Consultant



Landscape Design
Consultant



Traffic Consultant



Cost Management
Consultant



LEED & Sustainability
Consultant



Quality Consultant



Main Civil Contractor

A LEGACY BUILT ON TRUST.

CCI Projects Private Ltd., a sister-concern of Cable Corporation of India, was established to develop premium real estate for the discerning Indian. Our company is committed to creating landmarks that are not just an ode to Mumbai's skyline but are also sustainable and future-ready.

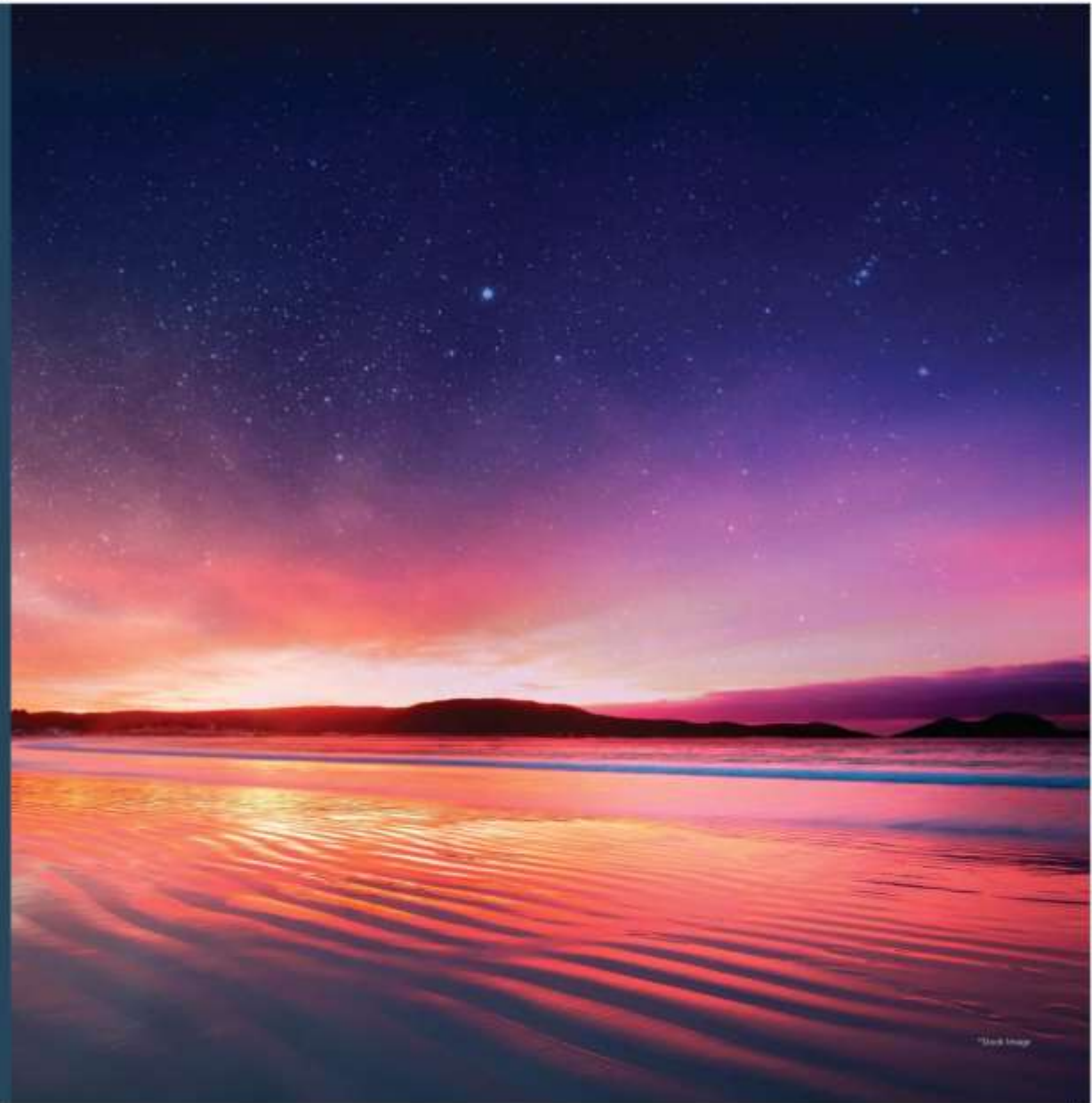
Cable Corporation of India was founded in 1957 by the Khataus in collaboration with Indian partners and German companies - Siemens and F&G. Today, it is recognized as one of India's premier companies in power cables as well as an EPC contractor of EHV and submarine cables.



Site Address: CCI Compound, WEH, Borivali East

www.cciprojects.co.in

These images and photographs are an artist's interpretation of ideas rather than a level of precision and integration. These have been digitally enhanced for visual and creative purposes and do not accurately represent the reality of the project. The photographs are not taken at the location but are used to create a sense of the overall lifestyle sought to be achieved. All reports, designs, plans, maps, images, symbols, specifications, dimensions, locations, features and other details herein are hereby given in nature and are subject to amendments by the Company and they shall prevail over printed publications. The details, photographs and images contained herein are not intended to and do not constitute a finalised, representative, agreement or final binding contract between any party to the Company. Any proposed transactions shall be subject to the full and complete terms and conditions of any agreement entered into with the Company, wherever such agreements, documents or maps. Please note your decision on information and disclosures available on www.rivalipark.com and also check under the name "Rivali Park - Stagger" FDS/00000000. The Project "Rivali Park - Stagger" is envisaged to be 100% - 100%.



"Dark Image"