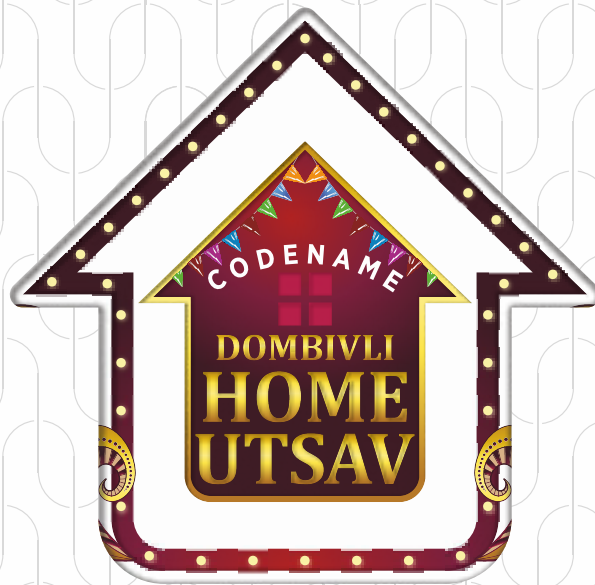


A LIFESTYLE
THAT
LETS YOU
ENJOY IT ALL

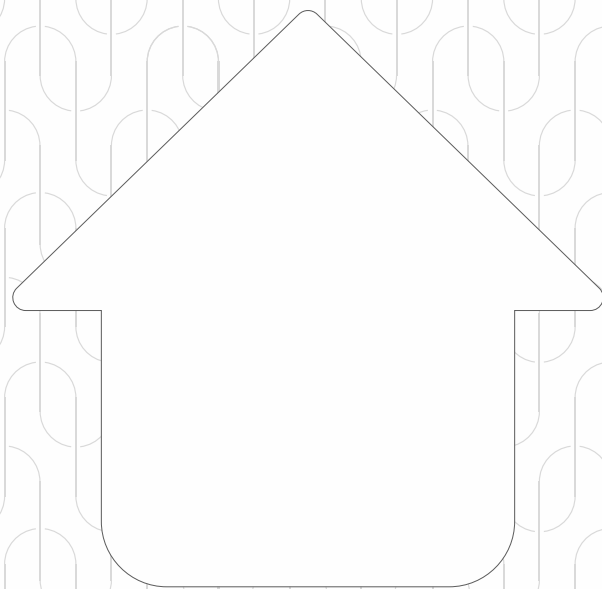




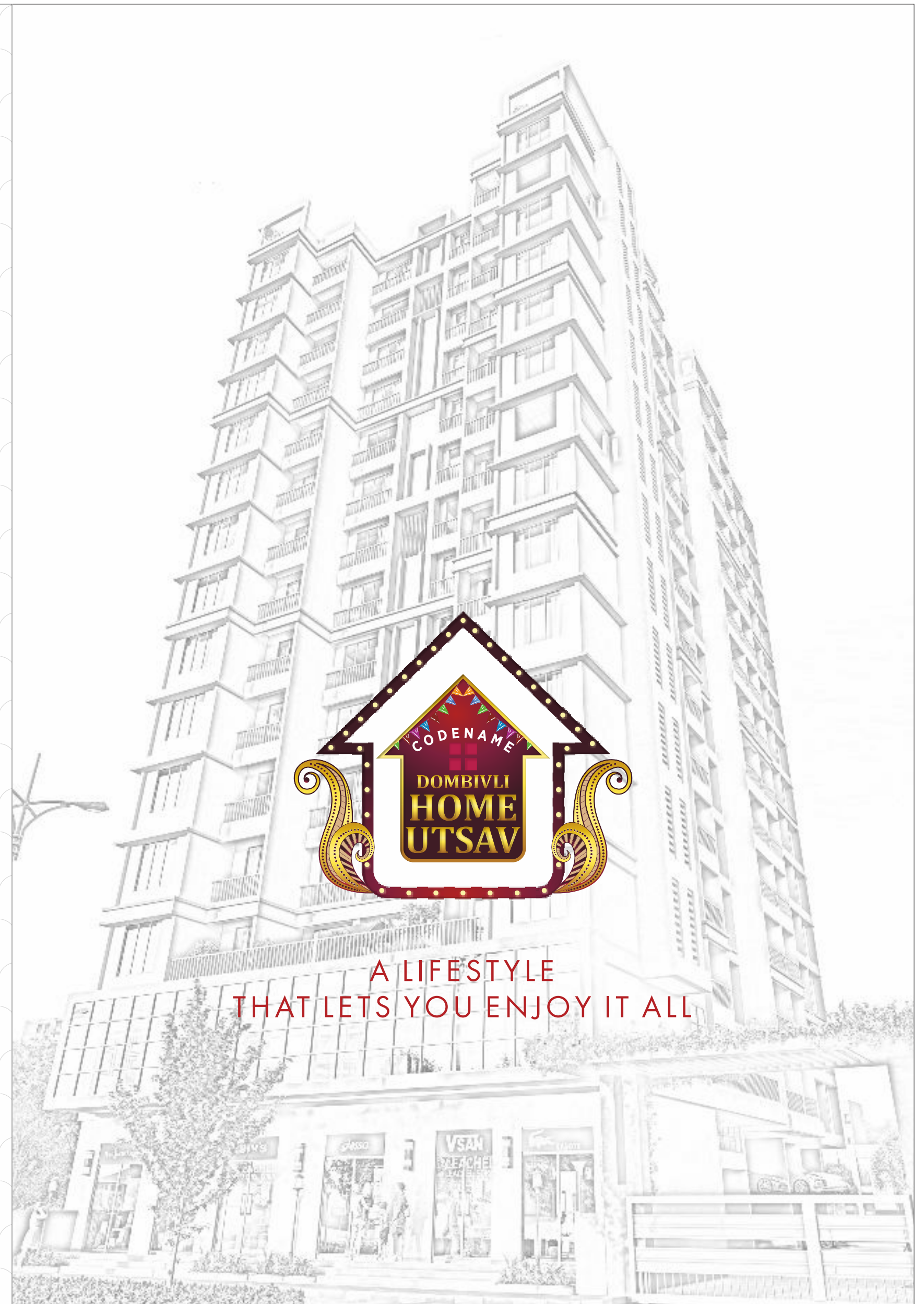
FULFILLING DREAMS
BUILDING PRICELESS LIFESTYLES
SINCE 1983

30+ years of
expertise

5 lakh+ sqft
developed



Shree Umiya Group is a name that builds excellence in each of its creations. Right from its inception, the group has been going from strength to strength, crafting abodes that give a sense of exclusivity to every family residing there. Under the leadership of Mr. Dilip Lakhamshi Patel, Mr. Jayesh Lakhamshi Patel and Mr. Vinod Lakhamshi Patel the group has developed and delivered over 5 Lakh + Sq.ft to over 1000 + happy customers. Our projects are the epitome of contemporary architectural design that blends luxury and usability. By all means, you will grow affection for your abode. We at Shree Umiya Group are committed to delivering operational excellence and set a benchmark for customer satisfaction.

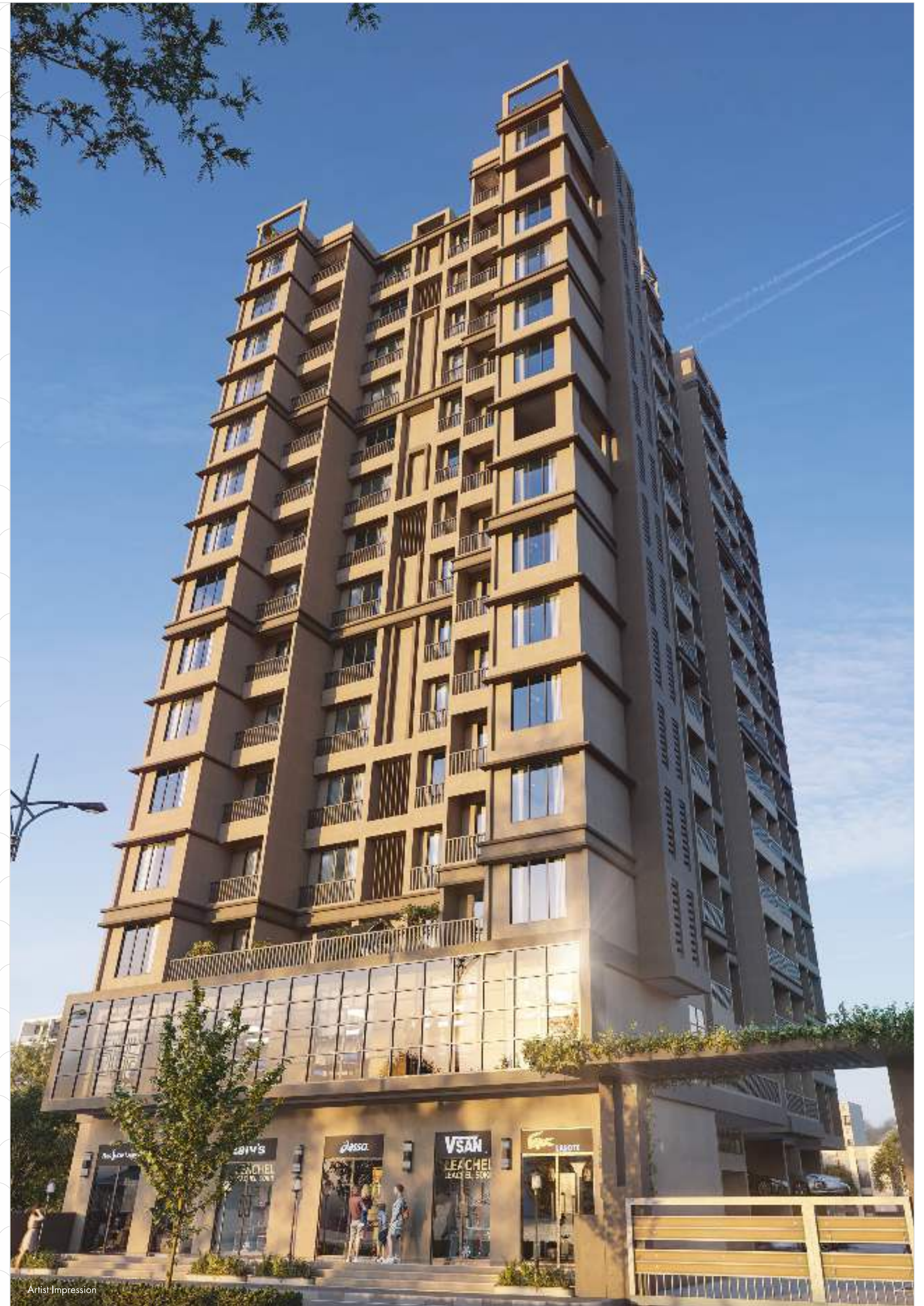


ABODE THAT YOU CAN'T GET ENOUGH



Shree Uma Heights is a sight to behold. A well-planned 14-storey tower having spacious, well-designed apartments on each floor. These 1 and 2 BHK apartments perfectly combine a family-friendly layout with delightful retreat spaces of living, kitchen and dining areas across the home's core.

Shree Uma Heights offers a charming blend of "Elite Living" with the best contemporary amenities, ensuring a warm and luxurious lifestyle at the finest address. The unique combination of vibrant surroundings, extremely high-quality construction standards and a professional approach set Shree Uma Heights apart for high-end living.





Artist Impression

MORE THAN JUST FOUR WALLS

Shree Uma Heights will never cease to amaze you for each of its unique features. The outdoors has been designed as elaborately as the indoors. It is an impressive stretch of incredible terrace amenities to connect with the community and their inner selves while disconnecting from everyday stress. With a play area for children, lush gardens, a jogging track, reading corners, a gymnasium and various recreational activities, you'll struggle to find excuses not to indulge in a happier, healthier lifestyle.

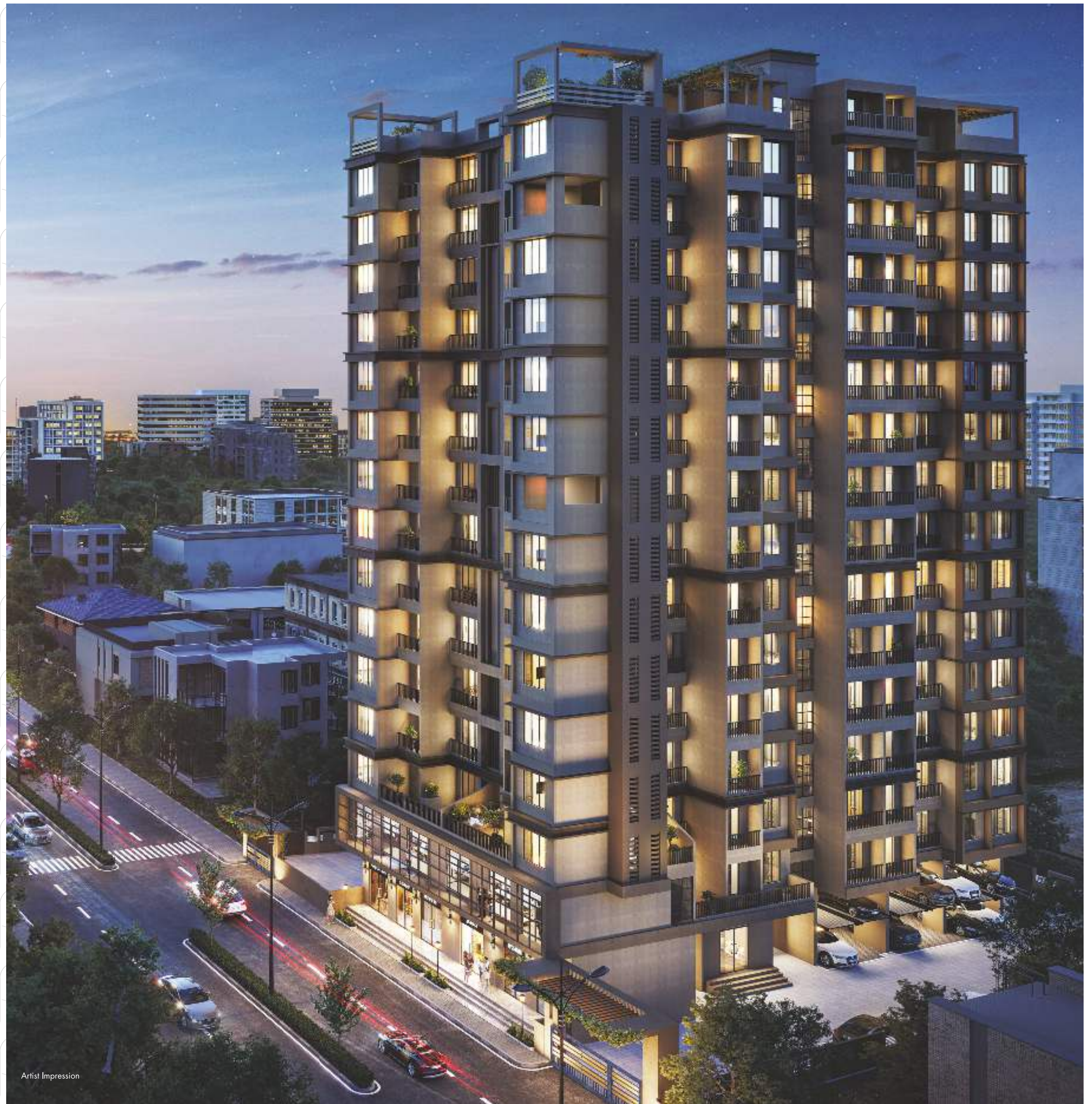
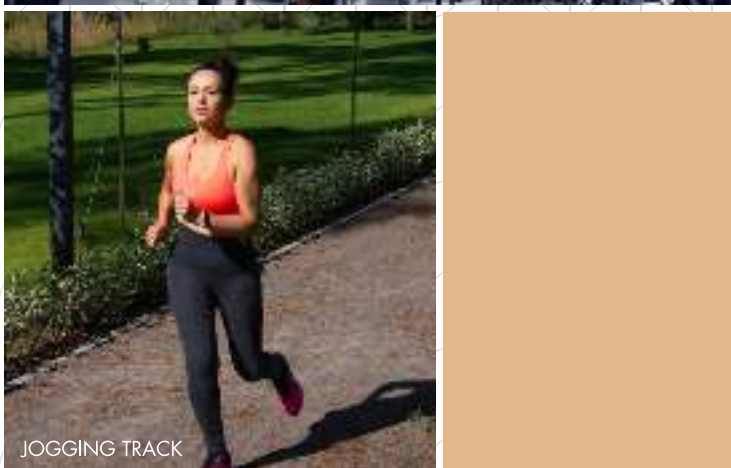


Artist Impression



Artist Impression

RAISE YOUR LIVING EXPERIENCE





A NEW WAY OF LIFE

- 
 10+ World Class Indulgence
- 
 World-class Construction Quality
- 
 14 Storey Tower
- 
 1&2 BHK Apartment
- 
 2 Branded Elevators
- 
 Landscape Views
- 
 Cross Ventilation Home
- 
 Jodi Apartments Available





Artist Impression



Artist Impression



Artist Impression



Artist Impression



Artist Impression

AESTHETICALLY BEAUTIFUL TECHNICALLY BRILLIANT

Shree Uma Heights is characterized by high-end specifications like a double-height grand lobby and tower parking, making living there a luxurious experience. From premium flooring & tiling to beautiful paints & finishes, from top-quality electrical fittings to the finest sanitary ware & plumbing. Shree Uma Heights has all this and so much more. Shree Uma Heights will undoubtedly surpass all expectations - truly exceptional in design, luxury and style.

CULTURAL HOTSPOTS OF DOMBIVLI

THE BRIGHT FUTURE OF KALYAN SHILPHATA ROAD



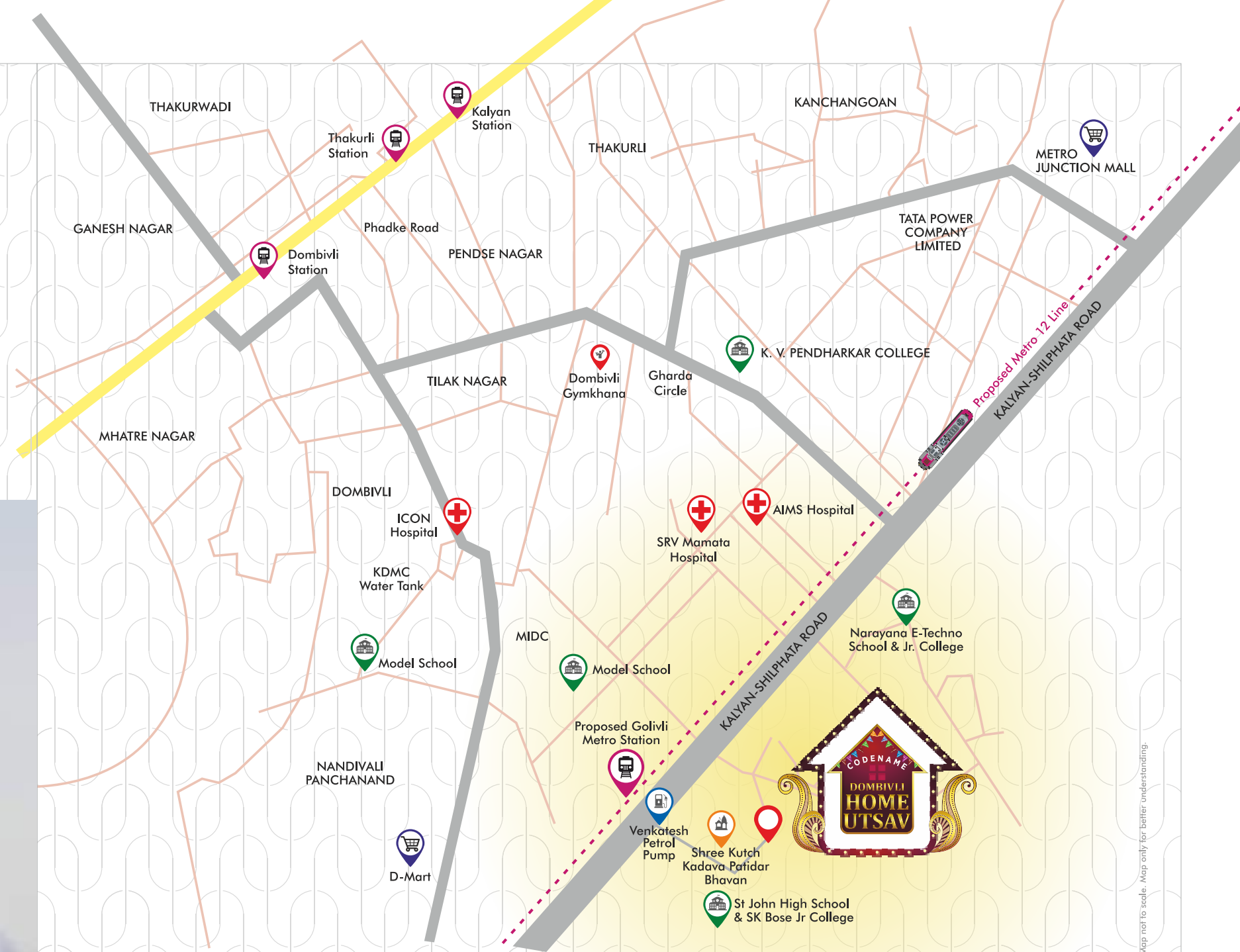
CULTURE



NATURE



FUTURE



A LOCATION THAT KEEPS YOU CLOSE TO YOUR HOBBY.

Strategically chosen and crafted at Kalyan Shilphata Road, Shree Uma Heights ensure to transform the life of its people by proposing a comfortable and stress-free neighbourhood. Shree Uma Heights is in a troupe with many famous schools, colleges, hospitals, shopping destinations, offices, retail marts, and every civic amenity required so that you spend less time on the road and more with your loved ones.

-  Proposed Golivli Metro Station - 1 min away
-  IndiGo Spice & Many more..
-  KDMC Sports Complex & Many more...
-  Auditoriums Like Savitribai Phule Natyagruh
-  Vijay Sales, Croma, D Mart & Many More..
-  Metro Junction Mall Xperia Mall & Many More..
-  Renowned Institutions like Pendharkar College & Many more..
-  Dombivli Gymkhana & Many more..
-  Dombivli Station Thakurli Station Kalyan-Shilphata Road
-  AIMS Hospital, ICON Hospital SRV Mamata Hospital
-  Shree Kutch Kadava Patidar Bhavan
-  Venkatesh Petrol Pump

Map not to scale. Map only for better understanding.

GRACE IN EVERY INCH

2nd Floor Plan



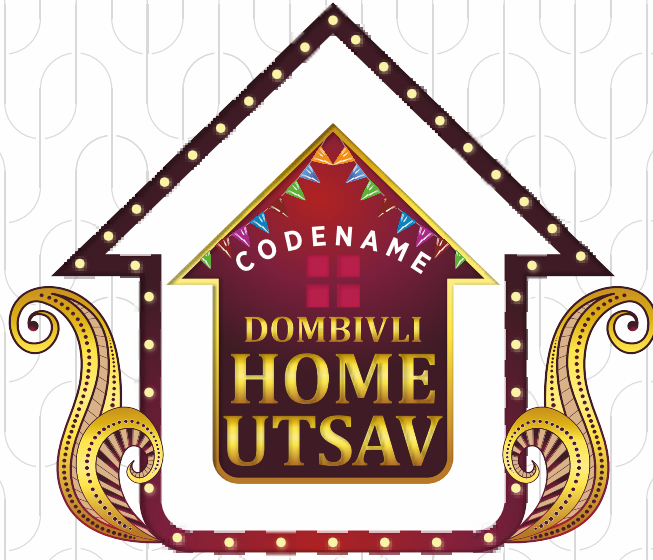
Flat No	Type	Rera Carpet	Usable Carpet
1	1 BHK	418 sqft	438 sqft
2	2 BHK	539 sqft	815 sqft
3	2 BHK	539 sqft	914 sqft
4	1 BHK	403 sqft	446 sqft
5	1 BHK	404 sqft	447 sqft
6	1 BHK	377 sqft	377 sqft
7	1 BHK	393 sqft	393 sqft
8	1 BHK	422 sqft	468 sqft

5th, 6th, 7th, 9th to 12th & 14th Floor Plan



Flat No	Type	Rera Carpet	Usable Carpet
1	1 BHK	418 sqft	438 sqft
2	2 BHK	575 sqft	595 sqft
3	2 BHK	575 sqft	595 sqft
4	1 BHK	403 sqft	446 sqft
5	1 BHK	404 sqft	447 sqft
6	1 BHK	377 sqft	377 sqft
7	1 BHK	393 sqft	393 sqft
8	1 BHK	422 sqft	468 sqft





ARCHITECT
R.K.ASSOCIATES

RCC
S. V. PATEL & ASSOCIATES

LEGAL ADVISOR
MANISH JAIN

JALARAM
DEVELOPERS

श्री UMIYA
GROUP
BUILDERS & DEVELOPERS

SITE OFFICE

Shree Uma Heights: Behind Patidar Bhavan, Opp. St. John School, Regency Estate Road, Golivli, Dombivli (East) - 421203.
Call : 880 6580 880 • E: sales@shree-umiyagroup.in • W: www.dombivlihomeutsav.com

CORPORATE OFFICE

Shree Umiya Group, 104, 1st Floor, Jagannath's Commerce Plaza, Char Rasta, Near Godrej Showroom, Manpada Road, Dombivli (East) - 421201.
E: shreeumiyagroup@gmail.com • W: www.shree-umiyagroup.in

Disclaimer: *T&C apply. This brochure is not a legal document and does not constitute an offer or contract of any nature whatsoever between the Promoter/Developer and the recipient. All rendered visuals, images, icons, plans and maps are artist's conceptions meant for illustration purpose only, unless otherwise mentioned. Location map, distance are approximate and not to scale, it's only for better understanding. All colours, furniture, fixtures, shown are for aesthetic representation purpose only and are not part of the flat offer for sale, it only describes a conceptual plan to convey the intent and purpose of the Promoter/Developer. The details mentioned in this brochure are tentative and are subject to approval. The Promoter/Developer reserves the right to modify and vary the detail mentioned herein at its sole discretion. The promoter/Developer does not warrant or assume any legal liability for the accuracy, completeness or usefulness of any information disclosed. **This project is registered as 'Shree Uma Heights' under MahaRERA Registration No. P51700051066 and is available on the website <https://maharera.mahaonline.gov.in/> under registered projects.**

creativesteps.in

