



AMARA
SEA VIEW APARTMENTS

Welcome To Amara
By Ujjwala Haware Legacyy



Haware Amara offers you a 23 storeyed landmark structure with a mighty view of mangroves and creek and defines luxury in true sense. A quintessence tower with world class amenities designed by our eminent architects & engineers in such a way that each home will remind you of living in royalty. The tranquil and spectacular Vikhroli East skyline will greet and treat you day in & day out..

Amara – By Ujjwala Haware Legacy offers spacious & ventilated high class 1BHK apartments with the premium configuration of Modern Amenities. Positioned in the prime location of Vikhroli East - Kannamwar Nagar. Haware Amara gives you an access to all the perks of Mumbai lifestyle without affecting the serenity.

Enjoy The Breath-Taking Visual Of The



Eastern Creek Of Mumbai Every Hour



Begin Your Day With The Cool Breeze And Warm Sky



Image For Representation Purpose Only

Air Conditioned 1BHK Homes!



Image For Representation Purpose Only

*T&C Apply



Rooftop Garden



Artistic Impression Of Actual Plan

A Heavenly Nature Themed Roof-top Garden That Calms You

Swimming Pool



Artistic Impression Of Actual Plan



**There Is Nothing Amazing Than A Dip In
A Sparkling Pool After A Long Overwhelming Day**



Open Air Lounge & Gazebo



Artistic Impression Of Actual Plan

**Stop, Click And Admire
The Wonder Of The Bedazzling Mangroves**

Gymnasium



Artistic Impression Of Actual Plan



**Fitness And Good Health
At Your Doorstep**



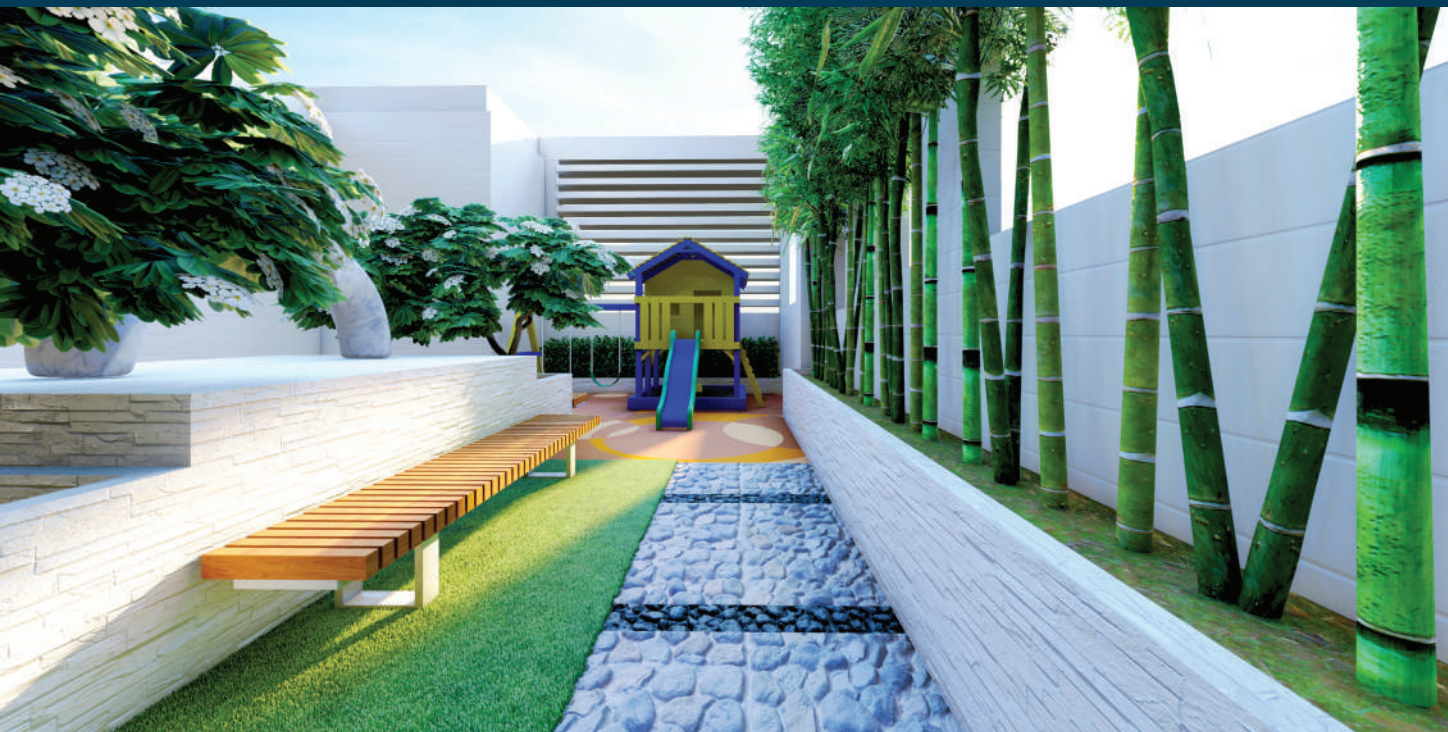
Kids Play Area



Artistic Impression Of Actual Plan

**Relive Your Childhood And Make Playful
Memories With Your Kids**

Senior Citizen Seating Area



Artistic Impression Of Actual Plan



**Have A Hearty Laugh, Soulful Talks
And A Soothing Place That Oozes Out Love**



CCTV Security And Video Intercom Facility



Artistic Impression Of Actual Plan

**Security, One Step Ahead. We Promise To Look Out
For You And Keep You Protected At All Costs**

Tower Parking



Artistic Impression Of Actual Plan



Spacious, Well-Designed And Well-Secured

1 BHK FLAT LAYOUT



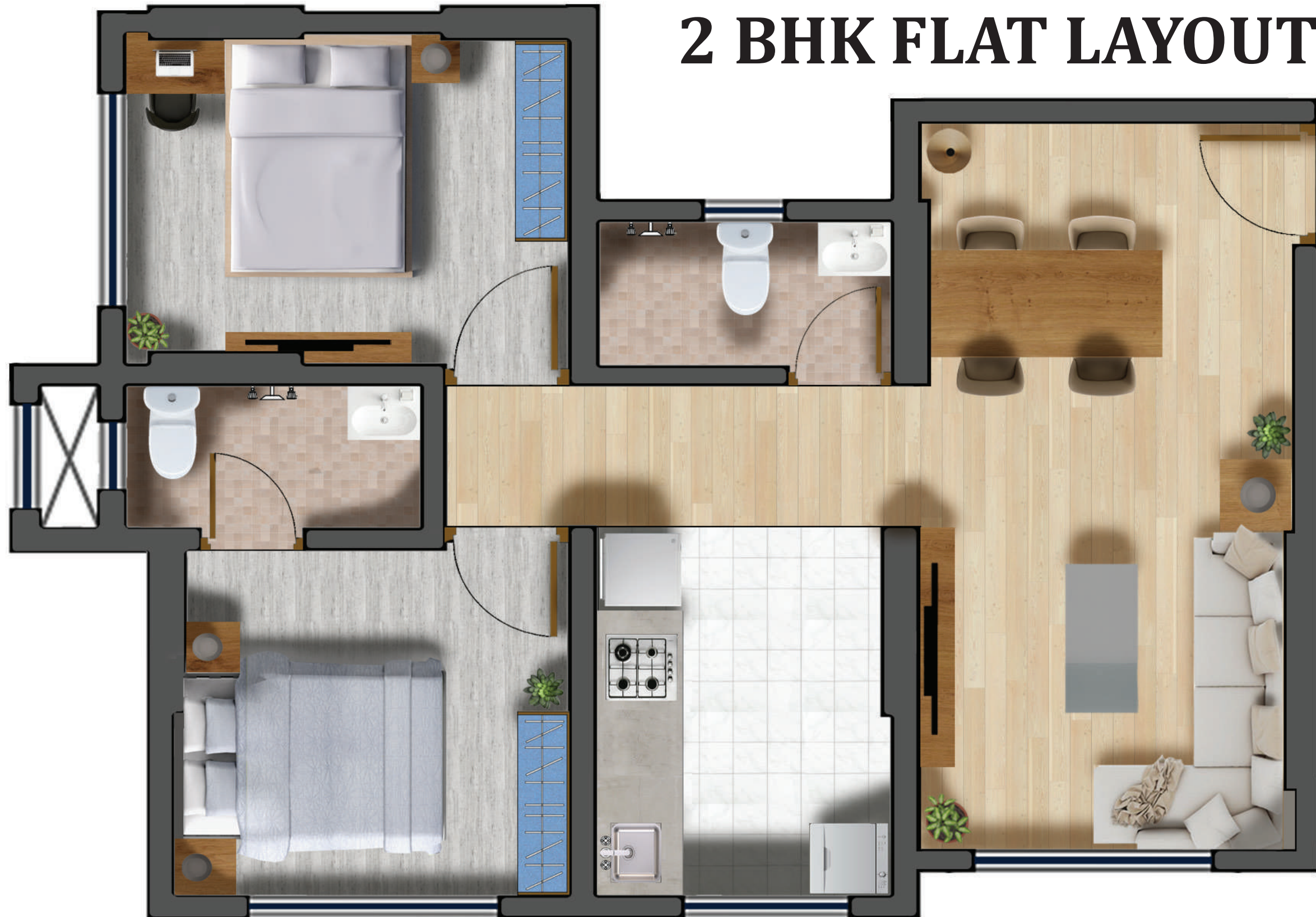
Wing A- 003

1 BHK PLAN LAYOUT



Wing A- 004

2 BHK FLAT LAYOUT



Wing A- 001

2 BHK PLAN LAYOUT



Wing A- 002



Wing B- 001
1BHK PLAN LAYOUT

Wing B- 002 1BHK PLAN LAYOUT



1 BHK PLAN LAYOUT



Wing B- 003

1 BHK FLAT LAYOUT



Wing B- 004

Typical Floor Plan Layout



TYPICAL FLOOR PLAN LAYOUT



Key Distances



Highway

Eastern Express Highway - 10 mins.
JVLR- 15 mins.



Hotels

The Taj - 5 mins.
Renaissance Convention
Centre - 20 mins.



Airport

Chhatrapati Shivaji International
Airport - 25 mins.



Schools

Abhay International School - 2 mins.
S. M Shetty School - 10 mins.
St. Joseph's High School - 10 mins.
Udyachal High School
Godrej - 5 mins.



Commerce Zone

Andheri - 20 mins.
BKC - 15 mins
Thane - 15 mins
Vashi - 30 mins.
Powai - 12 mins.



Malls

R City Mall - 15 mins.
Viviana Mall - 25 mins.



Hospitals

Sushrut Hospital - 10 mins.
Godrej Memorial Hospital - 5 mins.
Modi General Hospital - 5 mins.



Railway Station

Vikhroli Railway station - 5 mins.

Proposed Vikhroli - Koparkhairane Bridge



Kannamwar Nagar

**Kannamwar Nagar, A Dreamy Locality At Vikhroli East, Is One Of The Highest Housing Colonies In India.
It Is Well-known For Its Easy Road Access To Most Bustling Areas Of Mumbai.**

The Legacy Continues..



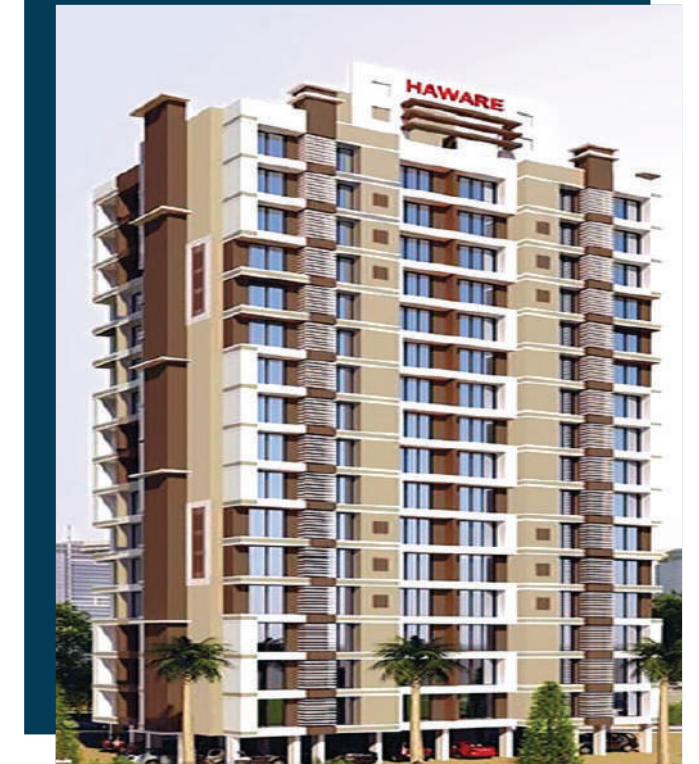
**Haware
Infotech Park**



**Haware
Grand Edifice**



**Haware
Fantasia Business Park**



Haware Dahlia



**Haware
Centurion Mall**



Haware Grace



**Haware
Grand Heritage**



**Haware
Green Square**

The Legacy Continues..



**Haware
Tilak Nagar CHS**



Haware Tulip



**Haware
Silicon Tower**



**Haware
Indraprastha Regency**



Haware Nilambari



Haware Parekh



Haware Splendor



Haware Tiara

