



GAURS
your own world

✓ UP RERA REGN. NO.: UPRERAPRJ283531 | Website of UP RERA: www.up-rera.in



*‘Art is not what you see
but what you make others see’*

- EDGAR DEGAS



"To be an artist is to believe in life."

- Henry Moore

AN EXQUISITELY
ARISTOCRATIC
ART FORM
INSPIRED BY
ITALIAN
ARCHITECTURE



THE TRECENTO ERA ART

INSPIRED BY THE MAGNIFICENT TRECENTO ERA



What is living, if without art? What is lifestyle, without inspiration? For a life worthy of artistry, our inspiration was the 14th century Italian Renaissance period. It was a time of great artistic and cultural development with a seamless fusion of light & shadow, nature and modernity.

From Francesco Landini, the great Italian composer & poet, who recreated nature and emotion, sweetness and harmony through his music, to Giotto Di Bondone, who pioneered the new age of painters during this Renaissance, many great artists flourished in this golden period of art & culture.

Even today *the TRECENTO era art* continues to fire the imagination of artists and designers around the world.


*"Every artist dips his brush in his own soul,
and paints his own nature into his pictures."*

- Henry Ward Beecher



EXQUISITE
BEAUTY,
BROUGHT
TO LIFE!

OUR VISION



From Trecento's era of artistic glory,
We draw inspiration for a modern story.

A masterpiece of architecture, fine and new,
Crafted with beauty, and artistry true.

With every detail, a timeless charm,
Each design element, adding to its calm.

A place for fine living, a space to thrive,
Where beauty and luxury, forever come alive.

So, now a modern masterpiece,
inspired by Trecento's past.

A place to call home, that will forever last.

A testament to our passion for beauty and design,
And a reflection of how Trecento's art still shines.

*"Art is the most intense mode of individualism
that the world has known."*

- Oscar Wilde

HOMES INSPIRED BY ART



UNVEILING THIS MASTERPIECE!

The ultimate culmination of dedicated endeavours
to revive the era where art flourished under the
benevolent patronage of royalty. This magnificence
truly embodies the essence of a regal lifestyle.

Come, take a look at our masterpiece, the pièce de
résistance...



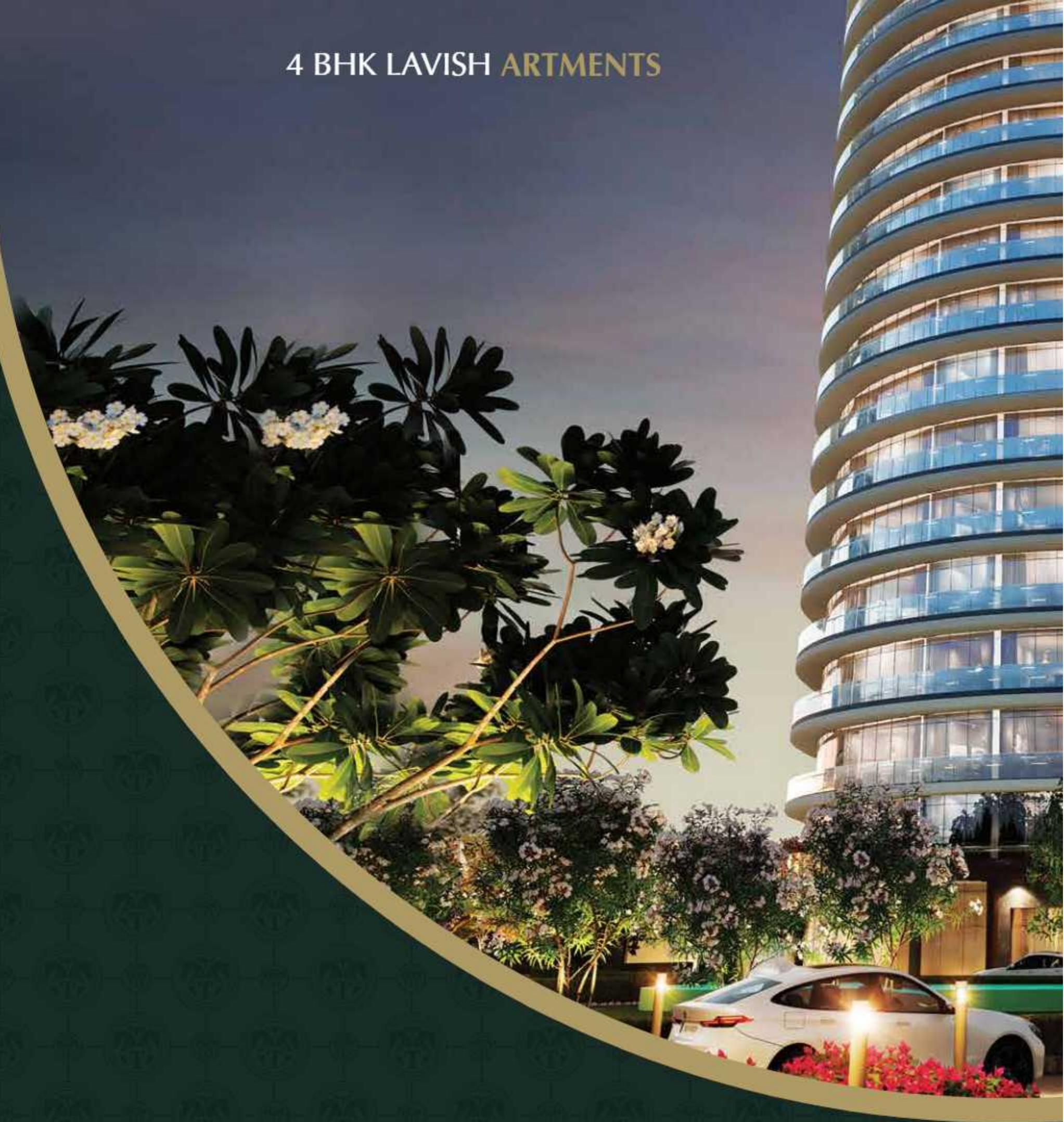
*"Art is the most intense mode of individualism
that the world has known."*

- Oscar Wilde

HOMES INSPIRED BY ART



4 BHK LAVISH ARTMENTS



SAVOUR THE DELIGHT OF WAKING UP TO MESMERISING VIEWS

In the middle of an International 18-hole Golf Course

Nestled within the embrace of 182.92 Hectares (452 Acres) of the verdant vistas of Jaypee Greens is this towering beauty. The entire lush landscape is like a blank canvas yearning for a masterpiece to be painted upon it. The Trecento Residences - A by Gaurs gracefully ascends towards the heavens with an air of timeless elegance. Its unique cylindrical shape and appearance crafts a visual symphony seamlessly blending man-made luxury with nature's grandeur.

This captivating scene stands as unmistakable as a beacon, visible and enchanting from miles afar.

- 🏢 Exclusive Tower rising upto 30 Storeys
- 🏡 Only 60 Artments [4BHK Condominiums] for 60 Select Families

Future Development



Future Development

CRADLED WITHIN A SEA OF GREENERY,
OUR PREMIUM TOWER IS A TESTAMENT
TO REFINED ELEGANCE.

The image is a wide-angle photograph of a modern, high-end apartment interior. On the left, a living area features a large wall-mounted television above a built-in fireplace with a warm fire. To the right of the fireplace is a curved, marble-clad bar or side table with a built-in shelving unit displaying various decorative items. In the foreground, a round wooden coffee table sits on a patterned rug, with a green armchair partially visible. On the right side of the image, a woman in a blue and white patterned dress is seated on a white cushioned armchair on a balcony. She is looking out over a vast, green landscape that appears to be a golf course, with a small pond and sand traps visible. The balcony has a glass railing and a curved design. The sky is clear and blue. The overall atmosphere is one of luxury and tranquility.

GAZE BENEVOLENTLY FROM YOUR PERCH

A breathtaking scene of a gorgeous landscape is your everyday view from the hemi-vu spaces.

With only two condominiums on each floor, surrounded by complete 180 degree balcony deck to enjoy the feel of privacy and exclusivity, a top of the world feeling envelops you here and you step out into the world to conquer more frontiers.

- Uninterrupted Panoramic View with Seamless Balcony Deck
- Witness the most Mesmerizing View everyday



DELHI

LOCATION
MAP

MAP NOT TO SCALE

DND Expressway

Sector 16
Film City

Mahamaya
Flyover

MetLife

Adobe Systems

Advant Navis
Business Park

NOIDA

Yamuna
Expressway
Entry point

NOIDA

Towards
GAUR CITY

GREATER
NOIDA

Alpha 1
Metro Station

Alpha Circle

PariChowk
Metro Station

Pari Chowk

Galgotias
College

Yatharth
Hospital

Commercial
Park

Shaheed Vijay Singh
Pathik Sports Complex

The Islands
by Gaur's

Jaypee
Greens

TRECENTO
RESIDENCES

ART OF ROYAL LIVING | by Gaur's

Radisson Blu
Hotel

Upcoming
Noida
International
Airport

Yamuna River

Yamuna Expressway



**TRECENTO
RESIDENCES**

ART OF ROYAL LIVING | *by Gaur*


LAYOUT PLAN



LEGENDS

1	MAIN ENTRY / MAIN EXIT TO TOWER A
2	MAIN ENTRY / EXIT TO FUTURE TOWER
3	DROP OFF AT TOWER A
4	DROP OFF FOR FUTURE TOWER
5	LANDSCAPE AREA
6	POOL
7	OUTDOOR OPEN GYM
8	PRE-TEEN AREA
9	SENIOR CITIZEN AREA
10	STEPPED POOL
11	AMPHITHEATRE
12	TEEN AREA
13	SKY WALK
14	PATHWAY
15	PLANTING BED
16	WATERFALL AREA
17	EXTERNAL ROAD
18	WOODEN DECK WITH PLANTING
19	PRAY AREA (DEITY PLACE)





GREATER NOIDA, A CITY POISED TO BECOME THE EPITOME OF EXCELLENT PLANNING & CONNECTIVITY

The setting of Trecento Residences - A by Gaur's is in the perfectly planned industrial city, Greater Noida. Proximity to the upcoming Noida International Airport and the Delhi Mumbai Industrial Corridor makes it the epicentre of commercial activities. It also has an intense ongoing drive to maintain its green cover which involves nurturing millions of trees and creation of several parks and green spaces. This makes it the perfect backdrop for architectural creativity and one of the best places to live.

Actual Image

Picture Courtesy - Jaiprakash Associates Ltd.

ROYALTY DESERVES EXCLUSIVITY!

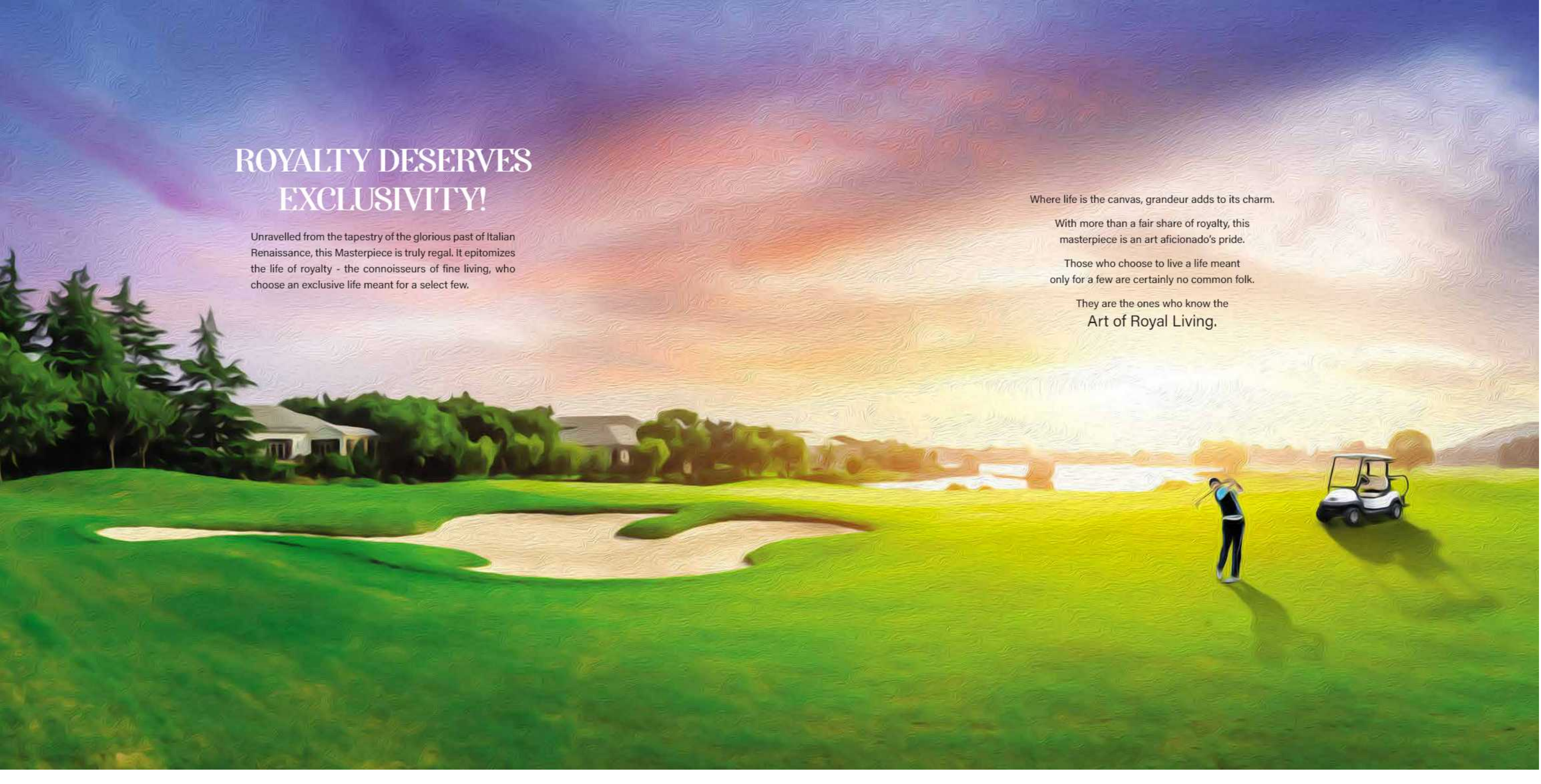
Unravelling from the tapestry of the glorious past of Italian Renaissance, this Masterpiece is truly regal. It epitomizes the life of royalty - the connoisseurs of fine living, who choose an exclusive life meant for a select few.

Where life is the canvas, grandeur adds to its charm.

With more than a fair share of royalty, this masterpiece is an art aficionado's pride.

Those who choose to live a life meant only for a few are certainly no common folk.

They are the ones who know the
Art of Royal Living.



An aerial photograph of the Jaypee Greens residential complex during sunset. The image shows a large, lush green golf course in the foreground, surrounded by numerous high-rise apartment buildings. The sky is a mix of deep blue and warm orange from the setting sun. Several birds are seen flying in the sky. The overall scene conveys a sense of luxury and tranquility.

JAYPEE GREENS PERFECT CANVAS PERFECT LOCATION

Jaypee Greens is a dream come true for the connoisseurs of elegant luxury, with its expansive green spaces and world-class amenities. Exclusively for a select few, the Trecento Residences - A by Gaur's offers a perfect blend of natural beauty and modern conveniences.

Jaypee Greens is an enclave of exclusivity graced by these connoisseurs of elegance, a place that exudes sophistication & is a testament to their impeccable taste. These exclusive individuals with a penchant for the finer things in life come together to create a world of unparalleled refinement & make it one of the most prestigious residential addresses in the NCR.



Boomerang Club



Temple



Atlantic Sports Complex

Pristine Garden

Jaypee Greens is surrounded by lush green and landscaped gardens, providing a sense of peace and tranquility amidst the hustle and bustle of city life.

A large area is dedicated to numerous well-maintained amenities that cater to the needs of its residents, including an 18-hole Golf Course, Swimming Pools, a Sports Complex, a Spa and Fitness Centre, Member Clubs, Temple and other Entertainment options. Here people are few but the wonders are many. With its high-end homes, world-class amenities and serene environment - symbols of sheer luxury and exclusivity; Jaypee Greens offers a lifestyle that is truly one of a kind.

All Actual Images, Courtesy - Jaiprakash Associates Ltd.

*Actual Site Photograph of Jaypee Greens Township. This facility is maintained and governed by the Rules and Regulations of Jaiprakash Associates Limited (JAL), this facility can be utilized as per the prevailing policies of JAL.

THE GATEWAY TO THE MOST LUXURIOUS LIFE

Jaypee Greens offers an exclusive, ready to move-in lifestyle accessible only to a select few. Ample green spaces and numerous water bodies make the environment calm & serene and the air unpolluted and pure that energises your whole being. This carefully crafted community is the place where one can truly appreciate the nuances of living and the delicate balance of natural beauty & modern lifestyle. A perfect place for the affluent who savor grand living.

Amidst this integrated township, you will find one of the world's longest 18 hole golf-course, designed by none other than Greg Norman, the biggest name in the world, for Golf Course Designs. This unique course is one of the world's most exclusive in the world. Playing at the fairway, are the whos-who and stalwarts of business, entertainment and expats, who call this place home. When you choose this locale, you are choosing to be part of the choicest few, who elevate living into one that is exclusive and luxurious.

18 HOLE GOLF COURSE
TEMPLE
BOOMERANG CLUB
GOLF PRACTICE RANGE
GATED SECURITY

SCHOOL
TOWN CENTRE
GOLF &
SPA RESORT
FIRE STATION

SPORTS COMPLEX - THE ATLANTIC
-OLYMPIC SIZE SWIMMING POOL
-INDOOR BASKETBALL COURT
-SYNTHETIC BADMINTON COURT
-SQUASH COURTS
-LAWN TENNIS COURTS

All the above amenities are a part of Jaypee Greens township, which is developed and managed by Jaiprakash Associates Ltd.
Certain township facilities are for members only and/or are available on a paid basis.

Actual Image, Courtesy - Jaiprakash Associates Ltd

*Actual Site Photograph of Jaypee Greens Township. This facility is maintained and governed by the Rules and Regulations of Jaiprakash Associates Limited (JAL), this facility can be utilized as per the prevailing policies of JAL.

Renaissance will be an exquisitely designed & picturesque landscape, a sanctuary of natural beauty & design marvels. A stunning tapestry of emerald green and bright floral hues will stretch to the horizon, inviting everyone to pause and relax. Time will stand still in this oasis of serenity and a sense of peace and well-being will surely pervade your heart.

Skywalk

Open Gym

Decks

Pathway

Pre-teen Area

Teen Area

Swimming Pool

Waterfall Area

Senior Citizen Area

Stepped Pool

Amphitheatre

Pray Area

GRACEFULLY TROTTING TOWARDS



THE LANDSCAPE

"To be an artist is to believe in life."

- Henry Moore



Future Development

A SOPHISTICATED & SOOTHING LANDSCAPE

With meticulously manicured lawns framing beautiful aquatic centerpieces. A symphony of colors and textures converge in this artistically curated panorama transporting you to a world of serenity and refinement.



TOWERING SKYWALK



A gracefully arched skywalk high above the ground meanders through the panorama, inviting you to explore the wonders ahead.



Artistic Impression

SWIMMING POOL



Azure waters sparkle welcomingly to caress you with their soft embrace.

A realm of sophistication and leisure, the Bloomsbury clubhouse is a sanctuary of refined indulgence, created to cater to your desires for recreation and rejuvenation. Offering both a sanctuary of peace for serious discussion as also luxurious amenities and personalized services when entertaining distinguished company, it offers a refined escape from the ordinary.

More than a physical space, the Clubhouse is a destination for moments of respite and cherished memories and a distinguished retreat tailored to your discerning taste.

Gymnasium

Indoor Gaming
Zone

Audio Visual Room

Chess Table
Snooker Table

Lounge

Table Tennis
Cards Table

Meeting Room

Carrom



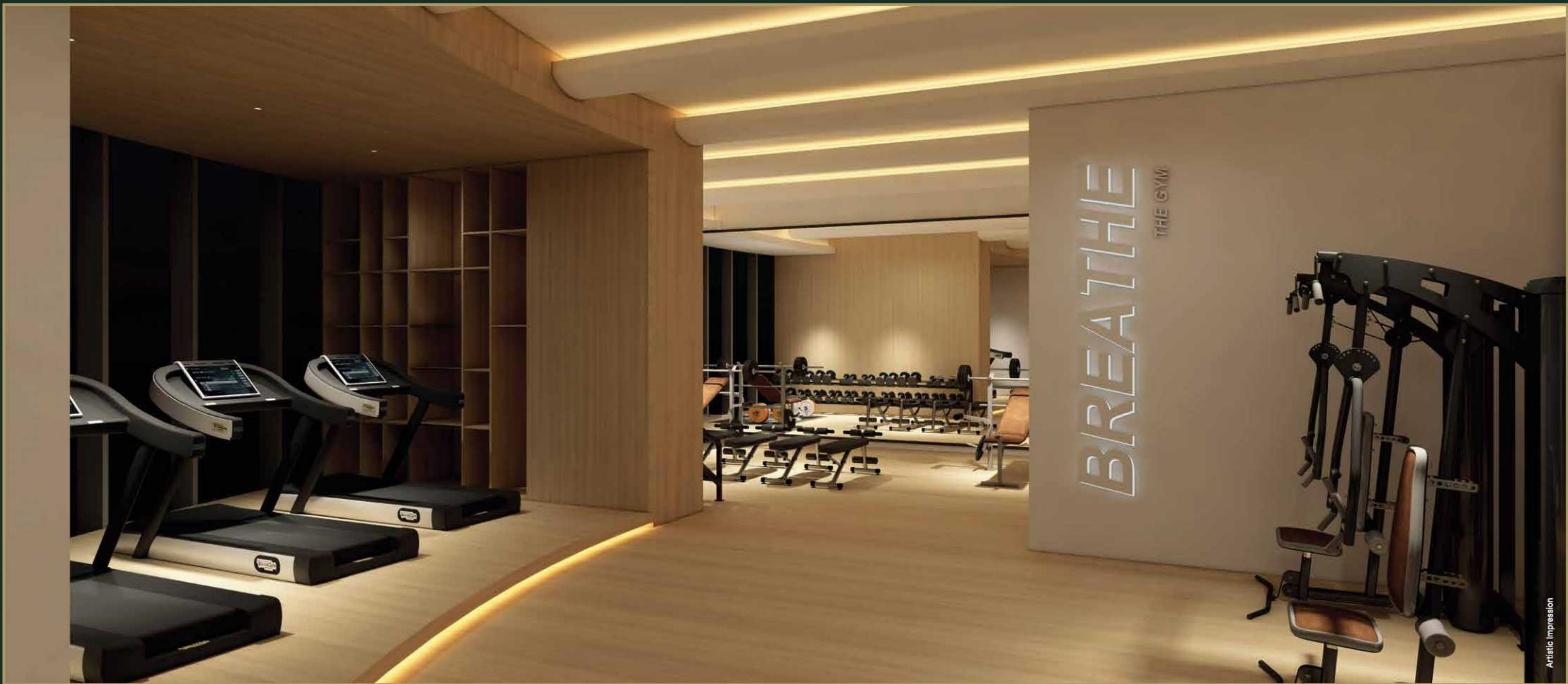
"Art enables us to find ourselves and lose ourselves at the same time."

- Thomas Merton

MARCHING GRACEFULLY TOWARDS



THE CLUBHOUSE



Artistic Impression

GYMNASIUM



A haven for wellness enthusiasts ready to challenge their limits.



Artistic Impression

AUDIO VISUAL ROOM



A realm of cinematic magic where entertainment takes the front seat.



Artistic Impression

LOUNGE



Exuding an air of conviviality for a quiet evening or a lively gathering.



Artistic Impression

Part of Future Development Tower

MULTI-PURPOSE HALL

Where minds meet and business blooms.



Artistic Impression

INDOOR GAMING ZONE

Experience the exhilaration of an elite lifestyle.

Enter the citadel of this enticing masterpiece with a harmonious symphony of architectural design and natural landscapes. The façade rises like a noble sentinel, majestically imposing and mystically attractive.



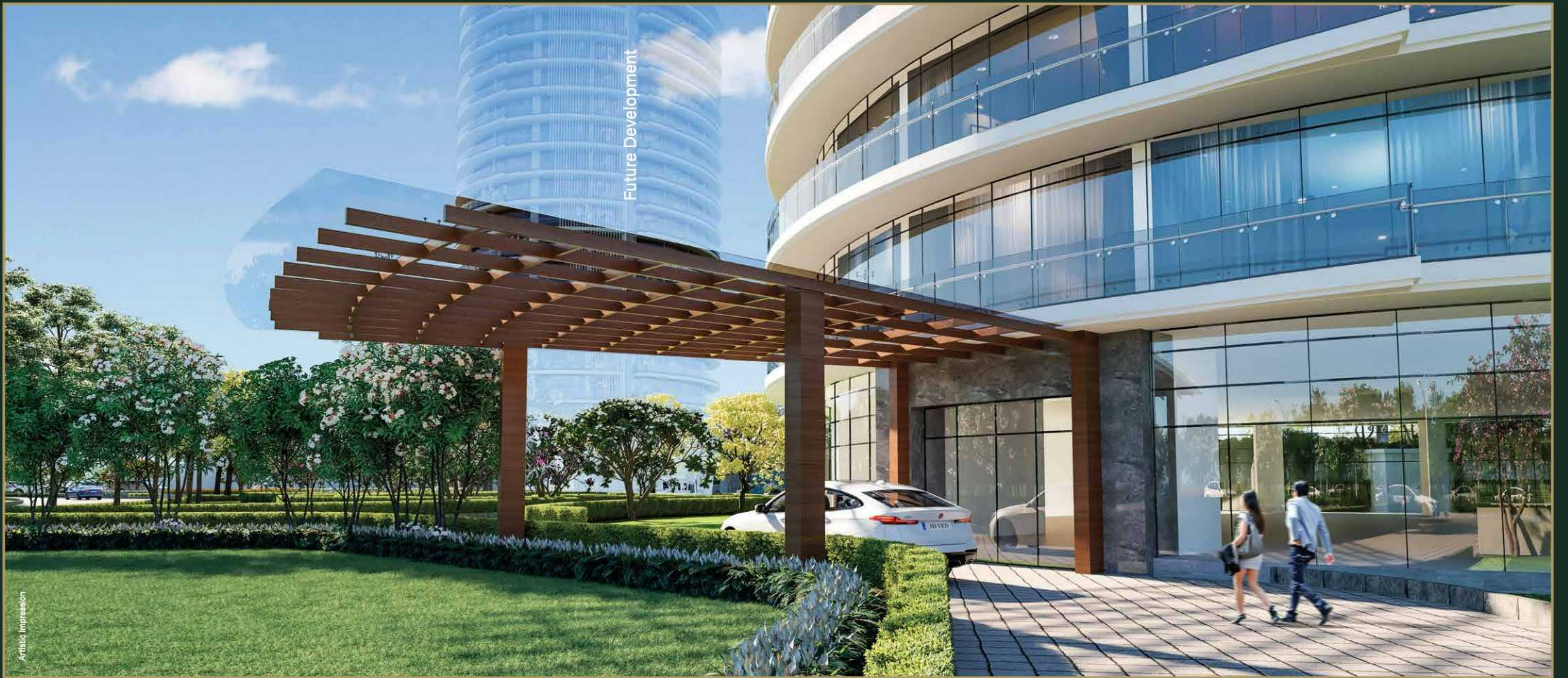
"Art is not freedom from discipline, but disciplined freedom."

- John F. Kennedy

MARCH TOWARDS AN EXTERIOR THAT SPELLS GRANDEUR



THE ARRIVAL



Future Development

Artistic Impression

THE GRAND PATIO



An invitation to savor life's grandest moments.



Artistic Impression

THE GRAND ENTRANCE



For an awe inspiring welcome befitting royalty.



Artistic Impression

ARTISTIC LIFT LOBBY



Where architecture and modern technology entwine
& weave a tapestry of creativity and sophistication.

Step into the exalted confines of this regal abode, where every corner whispers tales of opulence and elegance. The walls engage in a dance of colors casting a spell of timeless charm, shedding a soft, ethereal glow that paints every room in a celestial light. Where the furniture will stand as sculpted poetry, each piece telling its own story through the curves and carvings and the draperies will flow like cascades of dreams, pooling delicately upon the floors that mirror the heavens above.



"Art is the only way to run away without leaving home."

- Twyla Tharp

BEHOLD THE BEAUTY OF OUR ENCHANTINGLY ELEGANT HOMES



THE INTERIORS



Artistic Impression

WELCOME LOUNGE



Soak in the grace & grandeur of this exclusive space.



Artistic Impression

DINING ROOM



A special place for some personal moments of leisure.



Artistic Impression

LIVING ROOM



A symphony of design and emotion, in the very heart of your home - an exclusive space to enjoy cherished moments and the echoes of shared stories.



Artistic Impression

MASTER BEDROOM



Enveloped in a cocoon of tranquillity, the crowning jewel of the abode, a haven where dreams and reality seamlessly merge.



A WELL-DESIGNED
FLOOR PLAN FOR THIS
ICONIC LANDMARK



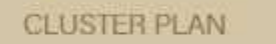
**TRECENTO
RESIDENCES**

ART OF ROYAL LIVING | *by Gaur*



This is a detailed floor plan of a 3BHK apartment. The layout includes the following rooms and dimensions:

- Master Bedroom:** 8400 X 3535, featuring a large bed, wardrobe, and attached toilet.
- Bedroom-2:** 3300 X 5485, with a bed and wardrobe.
- Bedroom-1:** 5010 X 6015, with a bed and wardrobe.
- Living Room:** 5165 X 6190, featuring a sofa and TV unit.
- Dining:** 4565 X 5900, with a dining table and chairs.
- Kitchen:** 6775 X 2740 / 3040, with a kitchenette and storage.
- Family Seating / Foyer:** 5000 X 4140, a central open area.
- Staircase:** Multiple staircases for UP and DN movement.
- Lift Lobby:** 2100MM WIDE, with three lift shafts (each 2500 X 2150).
- Other Rooms:** Includes a Store (2835 X 1710), PUJA room, Serv. Room (1860 X 2690), Utility (2010 X 1550), and several Toilets (e.g., 3340 X 1710, 4335 X 1900, 2885 X 2600).
- Balconies:** 1.5M Wide Balcony on the left and right sides.



AREA DETAILS

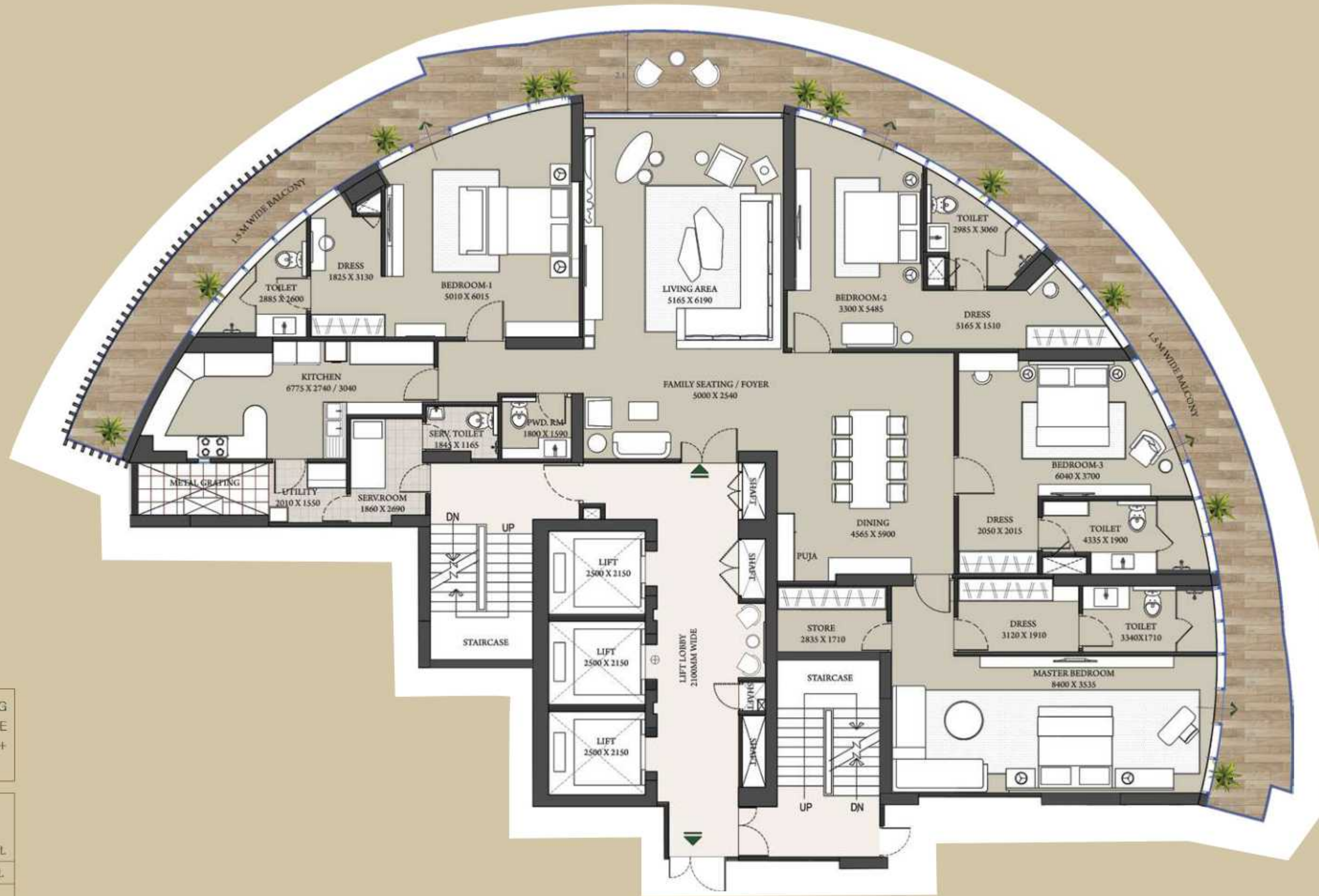
CARPET AREA (As per the RERA act)	=	289.17 Sq. Mt. / 3112.63 Sq. Ft.
COVERED AREA	=	294.86 Sq. Mt. / 3173.87 Sq. Ft.
BALCONY AREA	=	74.94 Sq. Mt. / 806.65 Sq. Ft.
COMMON AREA (FLOOR)	=	42.23 Sq. Mt. / 454.56 Sq. Ft.
SALEABLE AREA	=	469.16 Sq. Mt. / 5050 Sq. Ft.

Disclaimer: Total Area: The total area, including other constructed areas including the constructed common areas over the carpet area which is duly mentioned in the layout plan of the respective condominium. Carpet Area: The carpet area means the net lease floor area of a condominium, excluding the area covered by the external walls, areas under balconies, exclusive balcony or verandah area and exclusive open terrace area, but includes the area covered by the internal partition walls of the apartment. Scales for conversions, Area 1000 Sq.ft. = 10.764 Sq.ft. Dimension 304.8 mm=12 Foot.



UNIT PLAN CONDOMINIUM TYPE 2

TYPICAL FLOOR PLAN
G+30



CLUSTER PLAN

FOYER/LOUNGE + LIVING ROOM + 4 BEDROOMS + DINING AREA + PUJA + KITCHEN + 5 TOILETS + 4 DRESS + STORE + SERVANT ROOM WITH TOILET + UTILITY BALCONY + CONTINUOUS ALL ROUND BALCONY

AREA DETAILS

CARPET AREA (As per the RERA act)	=	284.28 Sq. Mt. / 3059.99 Sq. Ft.
COVERED AREA	=	289.86 Sq. Mt. / 3120.05 Sq. Ft.
BALCONY AREA	=	74.94 Sq. Mt. / 806.65 Sq. Ft.
COMMON AREA (FLOOR)	=	42.23 Sq. Mt. / 454.56 Sq. Ft.
SALEABLE AREA	=	464.51 Sq. Mt. / 5000 Sq. Ft.

Disclaimer: Total Area: The total area including of other constructed areas including the constructed common areas over the carpet area which is duly mentioned in the layout plan of the respective condominium. Carpet Area: The carpet area means the net usable floor area of a condominium, excluding the area covered by the external walls, areas under service shafts, exclusive balcony or verandah area and exclusive open terrace area, but includes the area covered by the internal partition walls of the apartment. Scale for conversion: Area 1000 Sq. Mt. = 10764 Sq. Ft. Dimension 3046 mm=10 Feet

DETAILS OF CONDOMINIUM APARTMENTS



Total Number of Units	-	60
Total Number of Blocks	-	01
Floor to Floor Height	-	3.25 Metre

Community Facility: Club with Gymnasium, Party Hall, Swimming Pool, Elegantly designed Landscaped Garden, Audio Visual Room, Lounge, Meeting Room, Indoor Games etc.

Note: All the above said Community Facilities will be shared between Tower A and Future Development Tower as these facilities are common for both the projects.

Specifications - Condominium

FLOORING

Drawing	-	Imported Marble
Dining	-	Imported Marble
Kitchen	-	Granite Stone
All Bedrooms	-	Imported Marble
Master Toilets	-	Imported Marble
Powder Toilets	-	Imported Marble
Toilets	-	Designer Tiles
Dresser	-	Laminated Wooden Floor
Balconies	-	Anti-skid Ceramic Tiles
Utility Areas	-	Anti-skid Ceramic Tiles

WALL FINISH

External	-	Texture Paint
Internal	-	Gypsum plaster finished wall with Plastic emulsion Paint

WIRING & SWITCHES

Wiring	-	Fire resistant copper wiring in concealed PVC conduits
Switches	-	Modular switches & sockets in adequate number
TV Points	-	In all rooms
Accessories	-	Provision for Wi-Fi connectivity

ELECTRICAL FITTINGS

Exhaust Fan	-	In Kitchen & Toilets
Light Fixtures	-	Concealed false ceiling light in Drawing Room, all bedrooms, Kitchen and Toilets.

DOORS & WINDOWS

External	-	Aluminium/uPVC sliding/ openable Doors & Windows with DGU glass
Internal	-	Pre-laminated elegant doors fixed in Hardwood door frame

KITCHEN

Counter	-	Kitchen counter with SS sink fitted with branded RO, Hob/ Chimney with exhaust pipe
Wood Work	-	Modular Cabinet in pre-laminated board
Wall Tile	-	Ceramic tiles 2 ft. above working counter

WOODWORK

Wardrobe	-	In all Dressing Room.
----------	---	-----------------------

AC & GEYSERS

VRV/ Split Acs	-	In Bedrooms, Drawing / Dining and Kitchen
Hot Water Supply	-	In Toilets and Kitchen through Heat Pump

RAILING

Balcony	-	Glass railing with SS fittings
Staircase	-	Mild Steel

CEILINGS

Internal	-	Good quality POP false ceiling in all rooms and Living/Dining room and Toilets.
----------	---	---

SANITARY WORK

Internal Piping	-	Corrosion Free CPVC Pipes & Fittings
Fitting	-	All Taps and fitting of Reputed Brands in C.P. fittings, wash basins, wall mounted W/C of reputed brands in appropriate shades.

SECURITY

Internal	-	Video Intercom Phone
----------	---	----------------------

Specifications - Common Area

ELEVATORS

High-speed elevators for access to all floors with service elevator.

EXTERIOR FINISH

Appropriate finish of exterior grade

FIRE FIGHTING SYSYTEM

Firefighting system with fire sprinklers, hydrant, hose reel, smoke detectors as per approved plans.

ELECTRICAL SUPPLY

Electrical Supply along with power backup will be supplied by the township.

STAIRCASE & LANDING

Floor- Combination of stone and tile.
Railing- MS (Mild Steel) as per design.

SECURITY AND FTTH

Entrance lobby, CCTV system and video door phone will be provided.



AN EVER
EVOLVING
LEGACY OF
ROYAL STYLE
AND
SPLENDOR

"Art is the proper task of life."

- Friedrich Nietzsche



THE GROUP



THE LIFE ARTISTS

We are one of India's premier real estate developers. Our commitment to quality, innovation, and customer satisfaction is well known.

Our motto is "The Life Artists" which reflects our philosophy of creating living spaces that are not just buildings but works of art.

Our luxury projects are known for their exquisite designs, state-of-the-art amenities, and unparalleled comfort. Gaurs Luxury Projects offers a wide range of Apartments, Villas, and Penthouses that cater to the needs of discerning buyers. We are the proud recipients of prestigious awards and recognition for our contribution to the development of the real estate sector in India and are committed towards continuing our sustained efforts.



OUR ROYAL LEGACY

28+

YEARS OF UNWAVERING
COMMITMENT

65+

SUCCESSFULLY
DELIVERED PROJECTS

40000+

POSSESSIONS GIVEN
(2014-2022)

65000+

DELIVERED
UNITS

1 Lakh+

HAPPY
CUSTOMERS

6 Million+

SQUARE METER
AREA DEVELOPED



OUR MAJESTIC PORTFOLIO



ONGOING RERA REGISTERED PROJECTS

Gaur Mulberry Mansions, Gr. Noida (West)
UPRERAPRJ7057, UPRERAPRJ4897
Gaurs Siddhartham, Siddharth Vihar,
Ghaziabad **UPRERAPRJ3935**
7th Avenue, Phase-II, Gaur City,
Gr Noida (West) **UPRERAPRJ6695**
14th Avenue Phase-II, Gaur City-2,
Gr Noida (West) **UPRERAPRJ6742**

Gaur Runway Suites,
Gaur Yamuna City **UPRERAPRJ351477**
Gaur City Center Ph-II,
Gr Noida (West) **UPRERAPRJ4780**
Aerocity Yamuna,
Gaur Yamuna City **UPRERAPRJ342117**
Gaur World SmartStreet,
Gr Noida (West) **UPRERAPRJ674297**

WEBSITE OF UP RERA: WWW.UP-RERA.IN

The Islands by Gaurs,
Greater Noida **UPRERAPRJ734569**
Gaur Aero Mall & Passport Studios by
Gaurs, Ghaziabad **UPRERAPRJ663149**
Gaur Aero Heights,
Ghaziabad **UPRERAPRJ941355**
Trecento Residences - A by Gaurs,
Greater Noida **UPRERAPRJ283531**



DELIVERED RESIDENTIAL PROJECTS

Gaur Residency, Chander Nagar
Gaur Galaxy, Vaishali
Gaur Heights, Vaishali
Gaur Ganga, Vaishali
Gaur Ganga 1, Vaishali
Gaur Ganga 2, Vaishali
Gaur Green City, Indirapuram
Gaur Green Avenue, Indirapuram
Gaur Green Vista, Indirapuram
Gaur Valerio, Indirapuram
Gaur Homes, Govindpuram
Gaur Homes Elegante, Govindpuram
Gaur Grandeur, Noida

Gaur Global Village, Crossings Republik
Gaur Gracious, Moradabad
Gaur Cascades, Raj Nagar Extn. Ghaziabad
Gaur Saundaryam, Gr. Noida (West)
1st Avenue, Gaur City
4th Avenue, Gaur City
5th Avenue, Gaur City
6th Avenue, Gaur City
10th Avenue, Gaur City-2
11th Avenue, Gaur City-2
12th Avenue, Gaur City-2
16th Avenue, Gaur City-2
Gaur Sportswood, Sector-79, Noida

Gaur Atulyam, Gr. Noida
14th Avenue, Ph-1, Gaur City-2
7th Avenue, Ph-1, Gaur City
2nd Parkview, Gaur Yamuna City
16th Parkview, Gaur Yamuna City
32nd Parkview, Gaur Yamuna City
Gaurs Platinum Towers, Sector-79, Noida
KrishnVilas (3rd Parkview) Gaur Yamuna City
Victorian Villas (6th Parkview), GYC
7th Parkview, Gaur Yamuna City
Gaur Lakeshore Villas (1st-A Parkview), GYC
Gaur Waterfront Plots, (1st-B Parkview), GYC



DELIVERED COMMERCIAL PROJECTS

Gaur Plaza, Shalimar Garden, Ghaziabad
Gaur Residency-Gravity, Chander Nagar, Ghaziabad
Gaur Galaxy-Vaishali, Vaishali, Ghaziabad
Gaur Square Govindpuram, Ghaziabad
Gaur Green City-Gravity, Indirapuram, Ghaziabad
Gaur Homes-Gravity, Govindpuram, Ghaziabad
Gaur Heights-Gravity, Vaishali, Ghaziabad
Gaur Ganga-Gravity, Vaishali, Ghaziabad
Gaur Ganga-I-Gravity, Vaishali, Ghaziabad

Gaur Ganga-II-Gravity, Vaishali, Ghaziabad
Gaur Green Vista-Gravity, Indirapuram, Ghaziabad
Gaur Gracious-Gravity, Moradabad
Gaur Global Village-Gravity, NH-24, Ghaziabad
Gaur Grandeur-Gravity, Sector-119, Noida
Gaur Valerio-Gravity, Indirapuram, Ghaziabad
Gaur Cascades-Hi-Street, NH-58, Raj Nagar Extn.
Gaur Biz Park, Indirapuram, Ghaziabad
Gaur Gravity, Indirapuram, Ghaziabad

Gaur City Plaza, Gaur City, Gr Noida West
Gaur City Galleria, Gaur City, Gr Noida West
Gaur City Arcade, Gaur City, Gr Noida West
GYC Galleria, Gaur Yamuna City
Gaur Atulyam-Gravity, Gr. Noida
Gaur Saundaryam High-Street, Gr Noida West
Gaurs Sportswood Arcade, Sec-79, Noida
Gaur City Center Phase-I, Gr Noida West
14th Avenue High Street, Gr Noida West



EDUCATION

Gaurs International School
Gaur City-2, Greater Noida (West)
Junior Wing, Gaur City - 2, Greater Noida (West)
Gaur Yamuna City, Yamuna Expressway
Gaurs Siddhartham, Siddharth Vihar, Ghaziabad



DELIVERED RETAIL PROJECTS

Gaur City Mall, Greater Noida (W)
Gaur Central Mall, RDC, Raj Nagar, Ghaziabad



HOTELS

The Gaurs Sarovar Premiere, Gaur City,
Gr Noida West
Radisson, Gr Noida West (Under Development)



Ever since we started our business journey in the year 1995, Gaurs' has been revered as an icon of excellence in the world of real estate. With a burgeoning list of residential projects that encompass high end apartments to highly affordable accommodations and now stepping into the luxury residential space, Our stress on customer's trust has been the winning mantra. The pointed, unnerving focus on creating a better tomorrow has been the driving force at Gaurs. It is our foresight, eye for perfect locations and excellence in execution that has earned us a much-deserved success throughout our long journey. And armed with the confidence and verve to enrich lives, one can safely say that the future belongs to us.



**REALTY+ EXCELLENCE
AWARDS 2022**
LUXURY PROJECT OF THE YEAR
- THE ISLANDS BY GAURS



MAPIC INDIA SHOPPING CENTER AWARDS 2022
BEST MALL FOR LEISURE AND
ENTERTAINMENT - DELHI NCR
- GAUR CITY MALL



SMART CITY EMPOWERING INDIA AWARDS 2020
BEST SMART CITY
DEVELOPER OF THE YEAR
- GAURSONS INDIA



CNBC AWAAZ REAL ESTATE AWARDS 2018-19
BEST RESIDENTIAL PROJECT
AFFORDABLE SEGMENT - NORTH ZONE
- GAUR CITY-2



PMAY EMPOWERING INDIA AWARDS 2019
THE MOST WELL PLANNED UPCOMING
PROJECT IN EWS CATEGORY
- GAURS SIDDHARTHAM



TIMES BUSINESS AWARDS 2019
BEST REAL ESTATE
DEVELOPER OF THE YEAR
- GAURSONS INDIA



CNBC AWAAZ REAL ESTATE AWARDS 2017-18
BEST RESIDENTIAL PROJECT
AFFORDABLE SEGMENT - NATIONAL
- GAUR CASCADES



CNBC AWAAZ REAL ESTATE AWARDS 2017-18
BEST RESIDENTIAL PROJECT
AFFORDABLE SEGMENT - NORTH INDIA
- GAUR CASCADES



NDTV PROPERTY AWARDS 2016-17
BUDGET APARTMENT PROJECT
OF THE YEAR (2017) TIER 1 CITIES
- GAUR CASCADES



NDTV PROPERTY AWARDS 2016-17
BEST TOWNSHIP PROJECT
- GAUR CITY



CNBC AWAAZ REAL ESTATE AWARDS 2016-17
BEST TOWNSHIP PROJECT
- GAUR CITY

28+

YEARS OF UNFALTERING
COMMITMENT

65+

SUCCESSFULLY
DELIVERED PROJECTS

40000+

POSSESSIONS
GIVEN (2014-2022)

65000+

DELIVERED
UNITS

100000+

HAPPY
CUSTOMERS

6000000+

SQUARE METER
AREA DEVELOPED





TRECENTO RESIDENCES

ART OF ROYAL LIVING

by *Gaurs*

✓ UP RERA REGN. NO.: UPRERAPRJ283531 | Website of UP RERA: www.up-rera.in

SCAN FOR



WEBSITE

SCAN TO FOLLOW US



INSTAGRAM



FACEBOOK

GOLF LAKE LLP

Project Address: TRECENTO RESIDENCES - A by Gaurs, Suncourt Tower-A, Plot No.- Condominium Apartments, Type-IV, B6a (CT-4/Tower-A), Golf Course, Land-1, Surajpur Kasna Road, Sector-19 & 25, Greater Noida - 201310 (U.P.) INDIA
GOLF LAKE LLP Identification No.: AAO-5496 | www.trecentoresidencesbygaurs.com | care@trecentobygaurs.com

GAURS
your own world

Corporate Office: Gaur Biz Park, Plot No.-1,
Abhay Khand II, Indirapuram, Ghaziabad - 201014 (U.P.) INDIA
www.gaursonsindia.com

Construction Finance Partner

