



Gateway of India - Established 1911



Rashtrapati Bhawan - Established 1912



India Gate - Established 1921



Sunworld Arista - The next landmark

SUNWORLD
ARISTA

3/4/5 BHK HIGH-END
AIR-CONDITIONED APARTMENTS

*THE FINEST BRITISH ARCHITECTURE
COMES ALIVE AGAIN*



*A CLASSICAL
RESIDENTIAL
MASTERPIECE
BY MASTER ARCHITECT
"HAFEEZ CONTRACTOR".*



Sunworld Arista is your gateway to a beatific life close to everything that your heart wishes. Discover an intensely serviced residential complex where the best in contemporary living blends harmoniously with serenading natural surroundings. Live close to MNC offices, schools, colleges and retreats of leisure and pleasure. Bask in the freedom of an urban sanctuary that houses spacious apartments in a space meant for twice as many. Live refreshed, at Sunworld Arista.



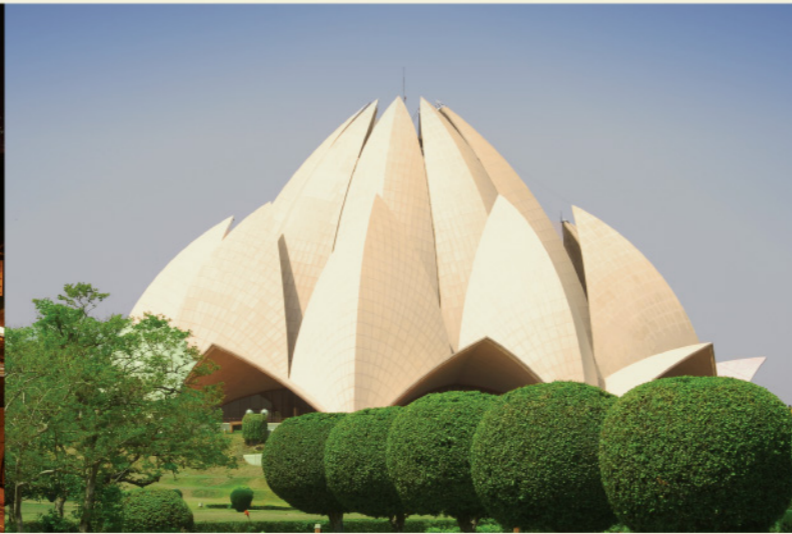
1 minute from FNG



30 minutes from India Gate



20 minutes from South Extension



20 minutes from Nehru Place



15 minutes from Apollo Hospital



Next to MNC Offices

*CLOSE TO THE EXPRESSWAY,
SCHOOLS, COLLEGES, MNC OFFICES.
AND CLOSER STILL TO NATURE.*



Achieve the perfect balance with the fast paced city life on one hand and tranquility of nature on the other. Strategically located on the Noida Expressway in Sector 168. Sunworld Arista offers prime accessibility to civic amenities and crucial facilities. Now find every destination, far and near, welcome you with open arms.

- Next to MNC Offices • 1 minute from FNG
- 5 minutes from Sec -18 • 10 minutes from DND Flyover
- 15 minutes from Apollo Hospital • 20 minutes from South Extension
- 20 minutes from Nehru Place • 30 minutes from India Gate



*DISCOVER SOMETHING
NEW EVERYDAY.*



Let your life sail ever so smoothly, in an intensely serviced residential complex that sets new benchmarks in town planning and accessibility management. Secure your peace of mind with state of the art electronic surveillance. Find every whim and fancy delivered to you on a platter. Live refreshed, in the glorious trinity of serenity, luxury and convenience.

AMENITIES

- Ample covered parking space • Beautifully designed landscaped areas
- Flower garden and lily pond • Commercial areas • Tennis court
- Joggers track • Elegantly designed central promenade with an amphitheatre • Separate drop-off areas for each tower
- Squash facilities • Swimming pool & kids' splash pool • Sit-out for senior citizens • Meditation hut • Party lawn • Kids' play area
- Cricket pitch • Ultra modern club • Exclusive club lounge for studio apartments • Exclusive club for super premium apartments
- Rooftop restaurant

SUNWORLD ARISTA

3/4/5 BHK HIGH-END
AIR-CONDITIONED APARTMENTS








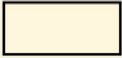



*ENDLESS ROOM FOR
PEACE AND BEAUTY -
UNENDING APARTMENTS
IN AN UNENDING SPACE.*

Cherish a life close to the nature, and closer to your every need. Make your inner child revel in the joy of freedom, with a beautiful green expanse open on two sides. Mix work and play with great élan, as you set your sight upon a developed commercial area right next door.

LEGEND

- A Entrance Gate B Entrance Water Body*
- C Entrance Water Fountain*
- D Car Parking E Ramp F Drop-off Areas*
- G Garden Side Lobby*
- H Club House J Swimming Pool*
- K Kids' Swimming Pool L Sit-out for Senior Citizens*
- M Amphitheatre N Cricket Pitch*
- P Lawn Tennis Court Q Flower Garden*
- R Zen Garden S Jogging Track*
- T Badminton Court U Lawn V Kids' Play Area*
- W Commercial Area Y Luxury Service Apartments*
- Z Party Lawn AI Yoga & Meditation Area*

 TYPE A (4750)	 TYPE B (3500)	 TYPE C (2700)	 TYPE D (2100)	 TYPE E (2100)
 TYPE F (2100)	 TYPE G (1750)	 TYPE H (615)		



STUDIO APARTMENT UNIT PLAN 1 BEDROOM + 1 TOILET

TYPE H

Super Area: 615 sq.ft.

- 1 Bedroom
- 1 Toilet
- 1 Living
- 1 Entrance Lobby
- 1 Kitchenette
- 2 Balconies



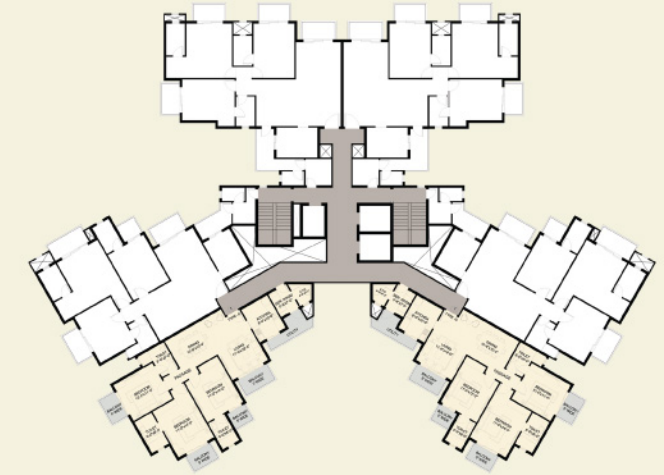
615 Sq. ft.

UNIT PLAN 3 BEDROOM + 3 TOILET

TYPE G

Super Area: 1750 sq.ft.

- 3 Bedroom
- 3 Toilet
- 1 Living + Dining Room
- 1 Servant Room
- 1 Kitchen
- 4 Balconies
- 1 Utility Deck



1750 Sq. ft.

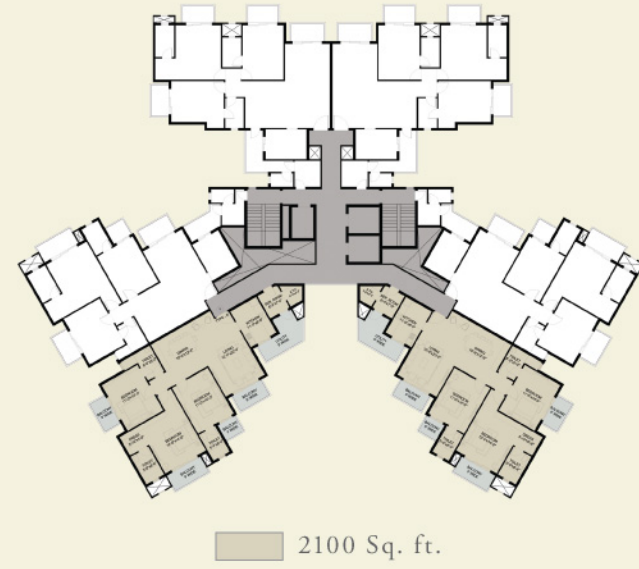


UNIT PLAN 3 BEDROOM + 3 TOILET

TYPE D

Super Area: 2100 Sq.ft.

- 3 Bedroom
- 3 Toilet
- 1 Living
- 1 Dining Room
- 1 Servant Room
- 1 Dressing Room
- 1 Kitchen
- 4 Balconies
- 1 Utility Deck



UNIT PLAN 3 BEDROOM + 3 TOILET

TYPE E

Super Area: 2100 Sq.ft.

- 3 Bedroom
- 3 Toilet
- 1 Living
- 1 Dining Room
- 1 Servant Room
- 1 Dressing Room
- 1 Kitchen
- 4 Balconies
- 1 Utility Deck

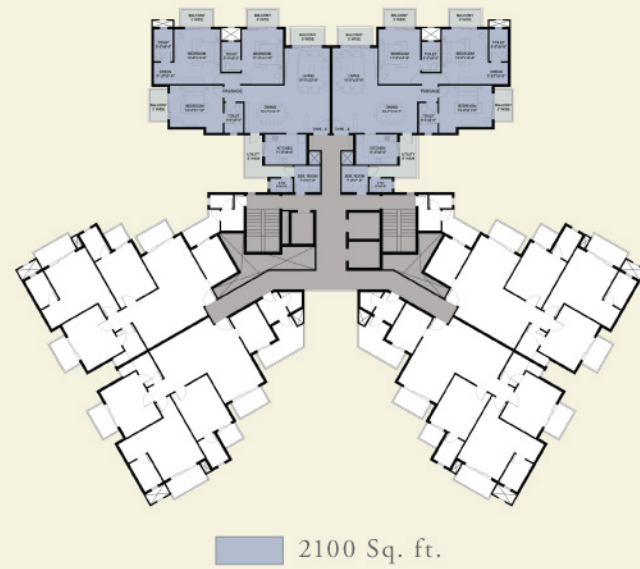


UNIT PLAN 3 BEDROOM + 3 TOILET

TYPE F

Super Area: 2100 Sq.ft.

- 3 Bedroom
- 3 Toilet
- 1 Living
- 1 Dining Room
- 1 Servant Room
- 1 Dressing Room
- 1 Kitchen
- 4 Balconies
- 1 Utility Deck

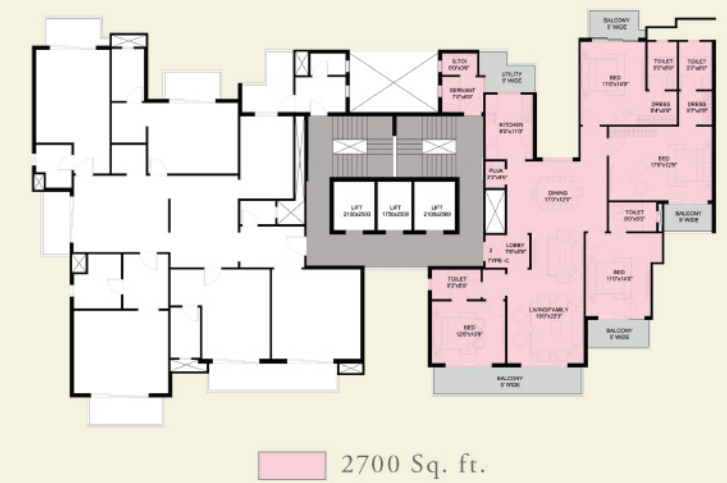


UNIT PLAN 4 BEDROOM + 4 TOILET

TYPE C

Super Area: 2700 Sq.ft.

- 4 Bedroom
- 4 Toilet
- 1 Living
- 1 Dining Room
- 1 Entrance Lobby
- 1 Servant Room
- 1 Puja Room
- 1 Dressing Room
- 1 Kitchen
- 4 Balconies
- 1 Utility Deck



UNIT PLAN 4 BEDROOM + 4 TOILET

TYPE B

Super Area: 3500 Sq.ft.

- 4 Bedroom
- 4 Toilet
- 1 Living
- 1 Dining Room
- 1 Family Lounge
- 1 Entrance Lobby
- 1 Powder Room
- 1 Servant Room
- 1 Puja Room
- 1 Dressing Room
- 1 Kitchen
- 5 Balconies
- 1 Utility Deck



SUNWORLD
ARISTA
 3/4/5 BHK HIGH-END
 AIR-CONDITIONED APARTMENTS

SUNWORLD'S PROJECT



Nestled among acres of greenery, Vanalika High-End Apartments herald a new concept in luxurious, green living with large residential apartments located in GH-1B, Sector -107(opp Sector-47), Noida.



An eco-friendly project, Sunworld City offers you the ultimate in luxury through a unique way of life; right in the lap of nature. Spread over 104 acres, this gated community offers you every possible amenity for a lifestyle that's truly world class. TS-7, Sector-22 D, Yamuna Expressway, Gautam Budh Nagar, (UP).



Vandita is the ideal gift for your family. Tomorrow when you look back on the days gone by, it should be with a sense of pride and satisfaction. Pride at your Vandita Home - the ultimate abode of happiness and tranquility. It provides you with a fast paced modern apartment lifestyle for those desirous of a rich and satisfying life. This strategically located yet affordable housing complex is developed on 10 acres of land within Sunworld City situated on Yamuna Expressway near the F1 tracks.



Spiretec, a joint venture with Sunworld spread across 21 acres, provides a new edge to the Greater Noida Tech Zone and an optimal environment for business growth and networking opportunities for both leading and emerging IT/ITES companies. Plot no. TZ-13A, Sector Tech Zone, Greater Noida Industrial Development Area, District Gautam Budh Nagar (UP).



SITE OFFICE: GH-1C, Corner Plot, Sector - 168, Noida Expressway, Noida | CALL: 9910557774/5
CORPORATE OFFICE: A4 Ground Floor, Sector - 4, Noida-201301, U.P. | TEL.: 0120 4780100 | www.sunworld.in