

**FUTURE WILL BE  
BEAUTIFUL,  
WHEN THE PAST  
INSPIRES  
THE PRESENT.**

**IT'S TIME TO THINK.**





ONCE UPON A TIME...  
THERE WERE  
STORIES  
ABOUT TREES  
& BIRDS



IT'S TIME TO BRING BACK THOSE STORIES...



ONCE UPON A TIME...

THERE WAS  
A CHILD WHO  
DREAMT OF  
WINNING  
A CYCLE RACE



IT'S TIME TO BRING BACK THOSE VICTORIES...



ONCE UPON A TIME...  
THERE WAS  
THE GRANDMA  
WHO PLUCKED  
FRESH  
TOMATOES



IT'S TIME TO BRING BACK THAT FRESHNESS...



ONCE UPON A TIME...

THERE WAS  
A BOY WHO  
CHASED  
BUTTERFLIES



IT'S TIME TO BRING BACK THAT EXCITEMENT...



ONCE UPON A TIME...  
THERE WERE  
GARDENS  
THAT WERE  
THE GYM



IT'S TIME TO BRING BACK THAT JOY...



ONCE UPON A TIME...  
THERE WERE  
MISCHIEVOUS  
MANGO EATING  
ADVENTURES



IT'S TIME TO BRING BACK THOSE ADVENTURES...







PRESENTING

 **arkade earth**  
return to roots  
Kanjurmarg (E)

1, 2 & 3 BHK NATURE-RESIDENCES

Artid & PropArtists



RUN



JOG



CHASE



HIDE N' SEEK

4 ACRES OF HAVEN BUILT ON EARTH, LIKE EARTH.



BREATHE



RELAX



RELIVE



REJOICE



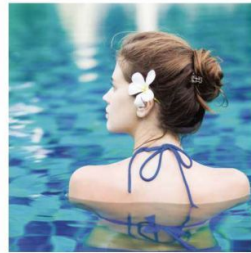
### CHILDREN & INNOCENCE

- Skating Rink
- Tennis Court
- Basketball Court
- Kid's Pool
- Children's Play Area.



### SIGHT & SOUND THERAPY

- Fruit Bearing Trees
- Hammock Garden
- Meditation Deck



### BODY, MIND & SOUL

- Swimming Pool
- Jacuzzi
- Gazebo
- Squash Court
- Gymnasium.



### PEOPLE & MOMENTS

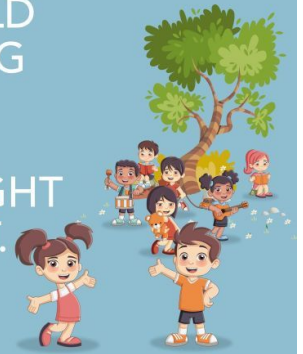
- Amphitheatre
- Indoor Games Room
- Multipurpose Hall



RAISING A CHILD  
IS LIKE TENDING  
A GARDEN.  
YOU HAVE TO  
GIVE IT THE RIGHT  
ENVIRONMENT.

**CHILDREN & INNOCENCE**  
ACTIVE ZONES FOR HEALTHY GROWTH YEARS

- Skating Rink
- Tennis Court
- Basketball Court
- Kid's Pool
- Children's Play Area



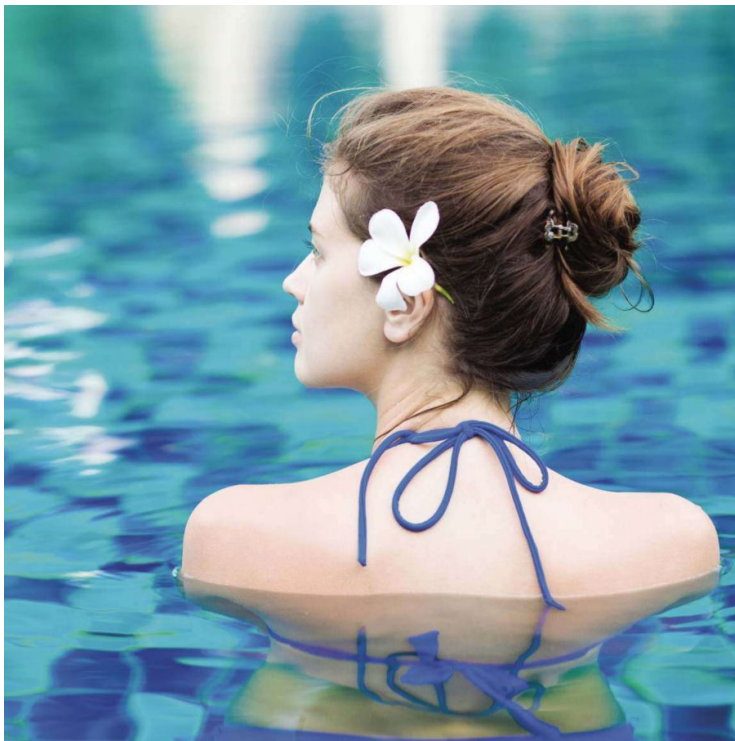


NATURE IS A PAINTER,  
SINGER, FARMER  
AND A  
PHILOSOPHER,  
ALL AT THE  
SAME TIME.



**SIGHT & SOUND THERAPY**  
LEISURE ZONES FOR THE MUCH NEEDED RELAXATION

- Fruit Bearing Trees
- Meditation Deck
- Hammock Garden



ROUTINE FOR  
YOUR BODY,  
RETREAT FOR  
THE MIND, A NEW  
WEALTH OF JOY  
FOR THE SOUL.



**BODY. MIND & SOUL**  
INDULGENCE ZONES THAT REDEFINE FRESHNESS

- Swimming Pool
- Jacuzzi
- Gazebo
- Squash Court
- Gymnasium.



WHEN YOU MEET,  
GREET AND  
INTERACT,  
YOU EXPRESS,  
OPEN-UP &  
RECLAIM LIFE.

**PEOPLE & MOMENTS**  
SOCIALISING ZONES FOR ENGAGING CONVERSATIONS

- Amphitheatre
- Multipurpose Hall
- Indoor Games Room

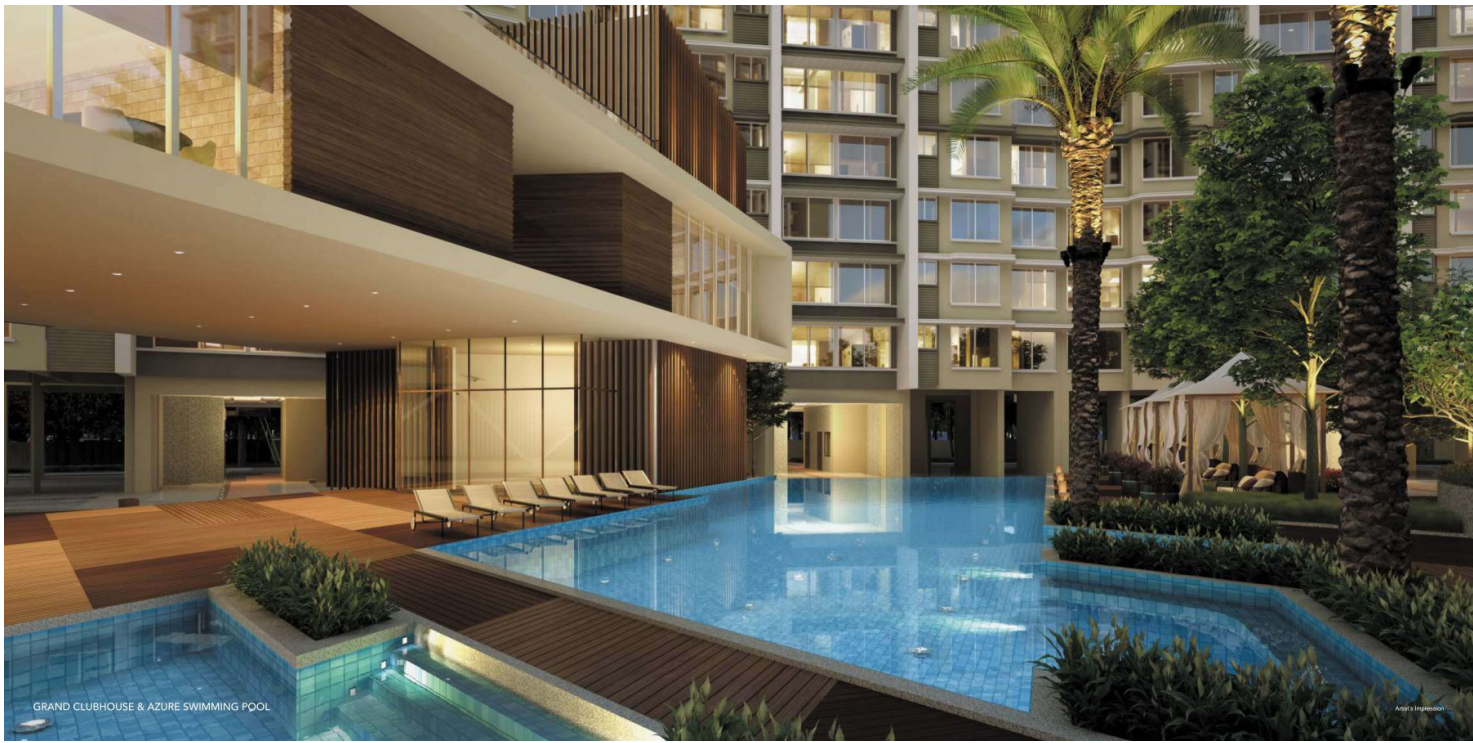




CABANAS AMIDST DESIGNER LANDSCAPE

Albert's Impression





GRAND CLUBHOUSE & AZURE SWIMMING POOL

Andri & Impression



PLAY COURTS & OPEN-AIR AMPHITHEATRE

© 2023 [unreadable]



BLISSFUL GREEN SPACES FOR SOLACE

Archi | Impression



LIFESTYLE THAT TOWERS ABOVE LUSH GREENERY

PHOTO: IMPRESSION



AERIAL NIGHT VIEW

Artistic Impression



## KANJURMARG EAST - THE DESTINATION OF NEW DEVELOPMENTS

Kanjurmarg - A destination that is one of the fastest growing suburbs in Mumbai. With serene ambience comes along connectivity of major landmarks & places within 10 mins drive. Overall, it is an ideal address to live at with enormous scope of growth and new standard of living.

### Education

- Podar International School
- Hiranandani International School
- Bombay Scottish School
- IIT Powai
- K. J. Somaiya Campus

### Hospitals

- Fortis Healthcare
- Dr. LH Hiranandani Hospital

### Conveniences

- R City Mall
- Powai Galleria
- D Mart
- Haiko Mall

## SITE LAYOUT PLAN & AMENITIES



### TOWERS

- A - Aspen
- B - Blue Bell
- C - Carnation
- D - Daffodil
- E - Ebony
- F - Fern
- G - Gardenia
- H - Hazel

### LEGENDS

#### Landscape Amenities

- 01) Urban Plaza
- 02) Drop off Plaza to Towers
- 03) Flag Hoisting Pole
- 04) Lawn
- 05) Adult Swimming Pool
- 06) Kid's Swimming Pool
- 07) Amphitheatre
- 08) Infinity Pool Edge
- 09) Pool Deck
- 10) Garden Lounges
- 11) Open Shower
- 12) Meditation Deck

- 13) Children's Play Area
- 14) Agriculture Field
- 15) Basketball Court
- 16) Tennis Court
- 17) Sparrow Housing Colonies
- 18) Amenity Space
- 19) Clubhouse

#### Club Building Amenities

- Gymnasium
- Squash Court
- Multipurpose Hall
- Indoor Games Room
- Skating Rink on Club Terrace



\*TO BE DEVELOPED IN PHASE WISE MANNER AS REGISTERED WITH MAHARERA.  
 \*FOR MORE DETAILS, PLEASE VISIT "maharera.mahaonline.gov.in"





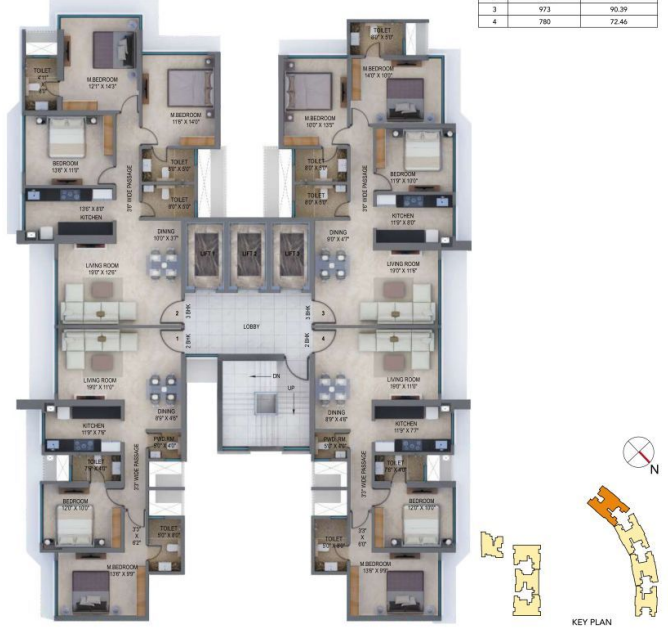
TYPICAL FLOOR PLAN - CARNATION  
MahaRERA No.: P51800014422

Sr. No.	RERA Carpet in Sq. Ft.	RERA Carpet in Sq. Mt.
1	466	43.29
2	482	43.36
3	678	62.99
4	723	67.17



TYPICAL FLOOR PLAN - DAFFODIL  
MahaRERA No.: P51800004440

Sr. No.	RERA Carpet in Sq. Ft.	RERA Carpet in Sq. Mt.
1	780	72.46
2	1099	102.10
3	973	90.39
4	780	72.46



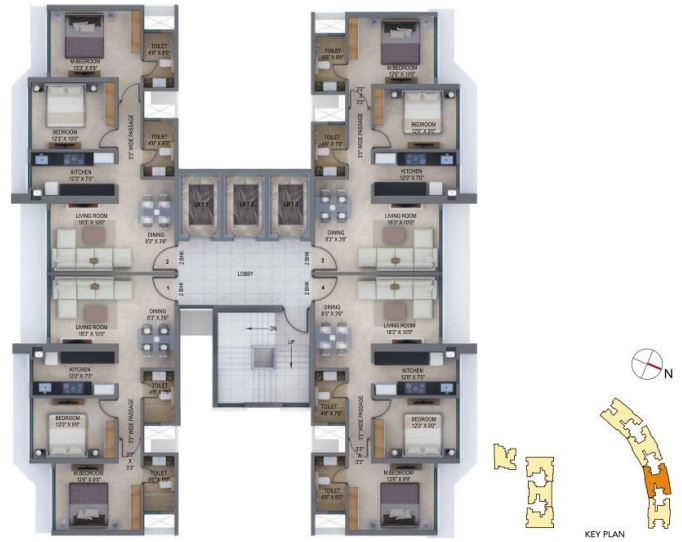
TYPICAL FLOOR PLAN - EBONY  
MahaRERA No.: P51800008953

Sr. No.	RERA Carpet in Sq. Ft.	RERA Carpet in Sq. Mt.
1	707	65.68
2	707	65.68
3	780	72.46
4	784	72.84



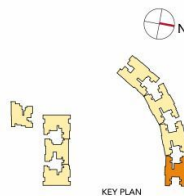
TYPICAL FLOOR PLAN - FERN  
MahaRERA No.: P51800004750

Sr. No.	RERA Carpet in Sq. Ft.	RERA Carpet in Sq. Mt.
1	677	62.89
2	707	65.68
3	681	63.27
4	677	62.89



TYPICAL FLOOR PLAN - GARDENIA  
 MahaRERA No.: P51800010074

Sr. No.	RERA Carpet in Sq. Ft.	RERA Carpet in Sq. Mt.
1	562	52.21
2	562	52.21
3	562	52.21
4	562	52.21



## SHAPING THE PRESENT. WELCOMING THE FUTURE, THAT IS NOW.

When vision goes beyond what we see, it reaches a new world that is yet to take shape. At Arkade, looking at future, we reinvent the present. We build symbols of desires, shapes of dreams that epitomise living. As a progressive enterprise, our each effort goes in finding a value that we are able to transfer to our customers, and transform lives while we are at it. For us, future is not tomorrow, it is now, taking shape in front of us.

### MILESTONES & BENCHMARKS

- 3000+ HAPPY FAMILIES
- 2.5 MILLION SQ. FT. DEVELOPED TILL DATE
- 1.5 MILLION SQ. FT. DEVELOPMENT IN PROGRESS

### FLAGSHIP COMPLETED PROJECTS

WALLACE FORTUNA,  
MAZGAON

JEEVAN SARITA,  
VILE PARLE (E)

ARKADE ADORNIA,  
GOREGAON (E)

### ICONIC ONGOING PROJECTS

ARKADE RISE,  
CARMICHAEL ROAD

ARKADE ART,  
MIRA ROAD (E)

ACROPOLIS,  
VIRAR (E)





Site: Junction of Seth Govind Ram Jolly Marg & Kanjur Village Road, Off JVLR, Kanjurmarg (E), Mumbai - 400 042  
Tel.: **92228 92229**, Website: [www.arkadegroup.com](http://www.arkadegroup.com)  
Corporate Office: Arkade House, Next to Children's Academy, Ashok Nagar, Kandivali (E), Mumbai - 400 101

<b>MahaRERA</b>	Aspen	Bluebell	Carnation	Daffodil	Ebony	Fern	Gardenia	For more details visit:
<b>Registration No.</b>	P51800006579	P51800011586	P51800014422	P51800004440	P51800008953	P51800004750	P51800010074	<a href="http://maharera.mahaonline.gov.in">maharera.mahaonline.gov.in</a>

Disclaimer: The information/details contained in this Brochure are purely indicative and may/may not form part of the final Project. The information representation made shown in this Brochure is only designer's/architect's conception with the intention to depict tentative concept of the Project and is only indicative of the envisaged developments and the same is subject to approvals from local authorities. We reserve our rights to make additions, deletions, alterations or amendments as and when it deem fit and proper and in accordance with applicable laws. No representation or warranty is made or intended and no commitments are being given under this Brochure as to the accuracy or totality of the "Arkade Earth" Project as represented under this Brochure.

The Planning as shown in this Brochure may vary/differ due to construction contingencies and site conditions, etc., consequently actual development and any other aspect may differ from what is portrayed herein. All layouts, plans, specifications, dimensions, designs, measurements and locations are indicative and not to scale and are subject to variation as may be required. All dimensions are approximate and subject to construction variances. Interior designing shown in the flat/unit is only for representation purpose.

The picture of the proposed Residential Flat/Unit and all furniture's, fixtures, items, electronic goods, amenities, landscaping, accessories etc. specified therein are only for the purpose of show casing the Residential Flat/Unit and we are not liable / required to provide any furniture, items, electronic goods, amenities, accessories etc. as displayed in the Brochure. The views shown in the Brochure may vary over period of time. All intending purchasers are bound to inspect all plans and approvals and acquaint with the relevant information in this Project.

You are therefore required to verify all the details, including area, amenities, services, terms of sales and payments and other relevant terms independently with the sales team/ company prior to concluding any decision for buying any unit(s) in the above Project. In any event, we shall not be liable for any expense, claim, loss or damage of whatsoever nature, caused due to reliance placed upon the depiction made in this Brochure of Project.