

VVCMC
APPROVED
PROJECT

A Project by :



Sai Shivansh Developers

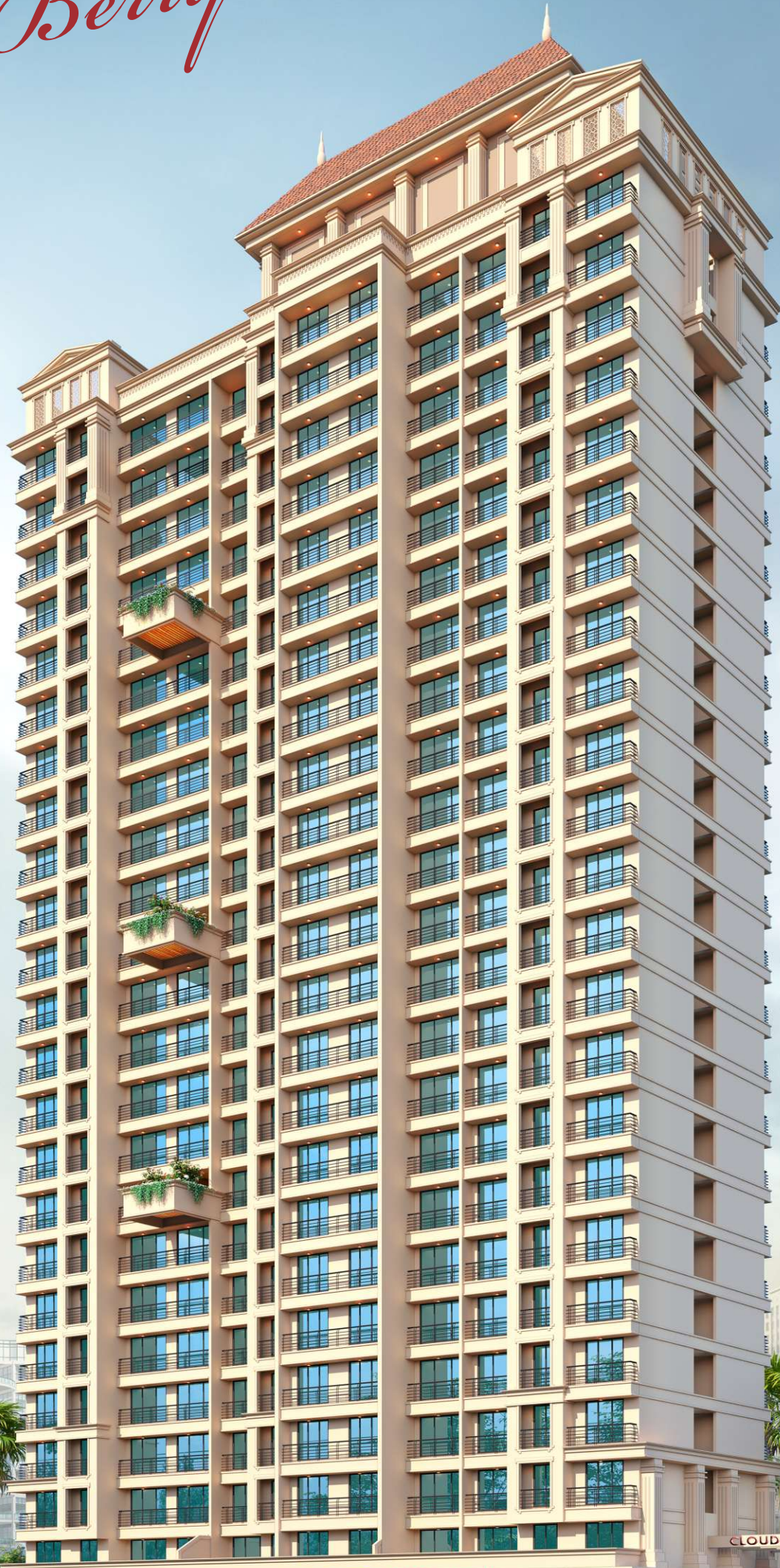
Cloud Berry

NEXT TO FUNFIESTA, NALLASOPARA (WEST).



Maharera No. P99000050955

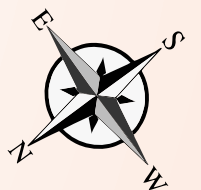
Cloud Berry



Cloud Berry



GROUND FLOOR PLAN

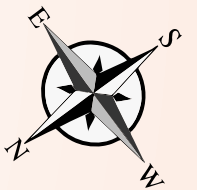


Cloud Berry



REFUGE FLOOR PLAN

8th, 13th & 19th Floor Plan



Cloud Berry

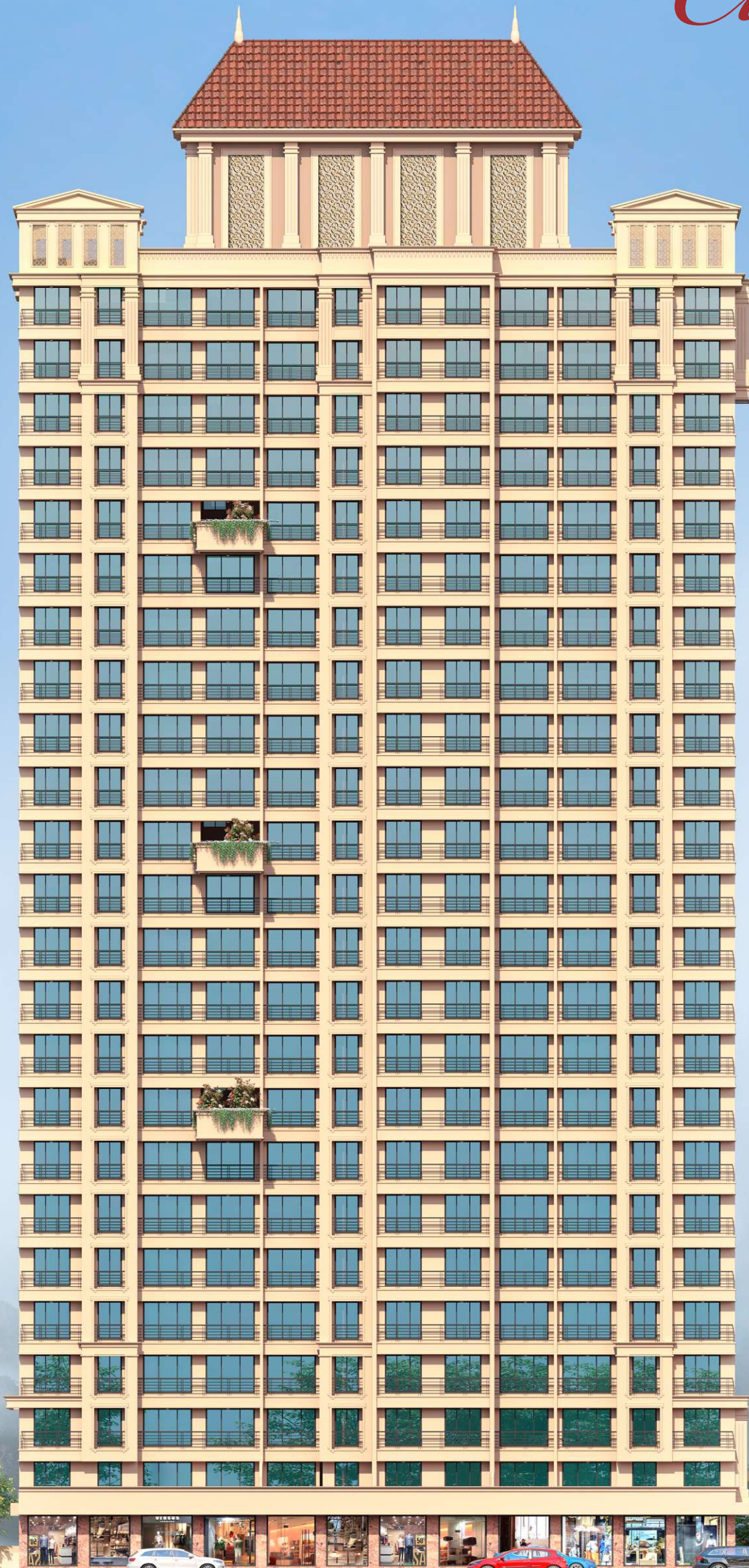


1 BHK 3D VIEW



2 BHK 3D VIEW

Cloud Berry



CLOUD BERRY



FLAT AMENITIES

Internal Amenities

- 32" x 32" Vitrified Flooring.
- POP false ceiling in Living room & Bed rooms.
- Concealed electricals & modular switches.
- Decorative main Doors, with fancy door fixtures.
- Water proof doors for Bath & WC.
- Cable / Dish TV & Telephone Points
- French window frame in Granite/Marble.
- Powder coated Sliding Window & tinted glass.
- Modular Kitchen.
- Granite Kitchen Platform with S.S. Sink and with designer cabinets with full height wall Tiles.
- Loft tank of reputed make in each flat
- POP wall in all rooms with Branded quality paint on internal walls.
- Tube Lights for sufficient light.
- Project designed as per 'Vastu Shastra'

*Cloud
Berry*

Transportation :

Railway Station 2.5 kms
Bus Stop Nearby
Auto Stand Nearby

School and Colleges :

CBSE, ICSE & Stateboard
School and Junior College
within range of 500 mtrs

Shopping and Entertainment :

D Mart & McDonald's within in the
range of 500 mtrs.
Fun Fiesta Theatre & Mall
within in the range of 500 mtrs.

Hospital :

Shree Riddhivinayak Multispeciality
Hospital, Vasai-Virar's Biggest Hospital
in 2 min walking.

Conveniences :

Sopara Police Station within 1 km range
VVCMC House Tax Office within range
of 500 mtrs.

Parks and Gardens :

VVCMC Municipal Park

SPECIFICATION AND PROJECT AMENITIES

*Cloud
Berry*

Specification and Project Amenities

- G+ 23 Storeyed Grand Tower
- 1BHK and 2BHK flats for your own space
- Spacious shops on ground level
- Children's play area
- Parking area.
- Close to nature pure environment with ample sunlight, aeration, nature view
- Total privacy arranged in all flats
- Excellent planning to avoid wastage of space in any room
- Good lighting & ventilation for all flats.
- RCC structure and magnificent architectural elevation
- Functionally and tastefully designed flats with ultra modern amenities
Power backup for common lighting & lifts
- Rain water harvesting
- Automatic and high-speed lifts of reputed brand
- CCTV Surveillance
- Decorative Main Door
- Well connected by all means of transport
- School College and Hospital in close vicinity

PROJECT AMENITIES



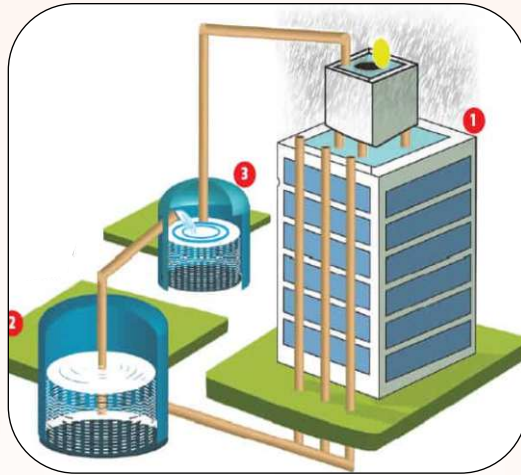
ENTRANCE LOBBY



HIGH SPEED LIFT



CCTV CAMERA



RAIN WATER HARVESTING

NEARBY PROJECT



D MART



SCHOOL

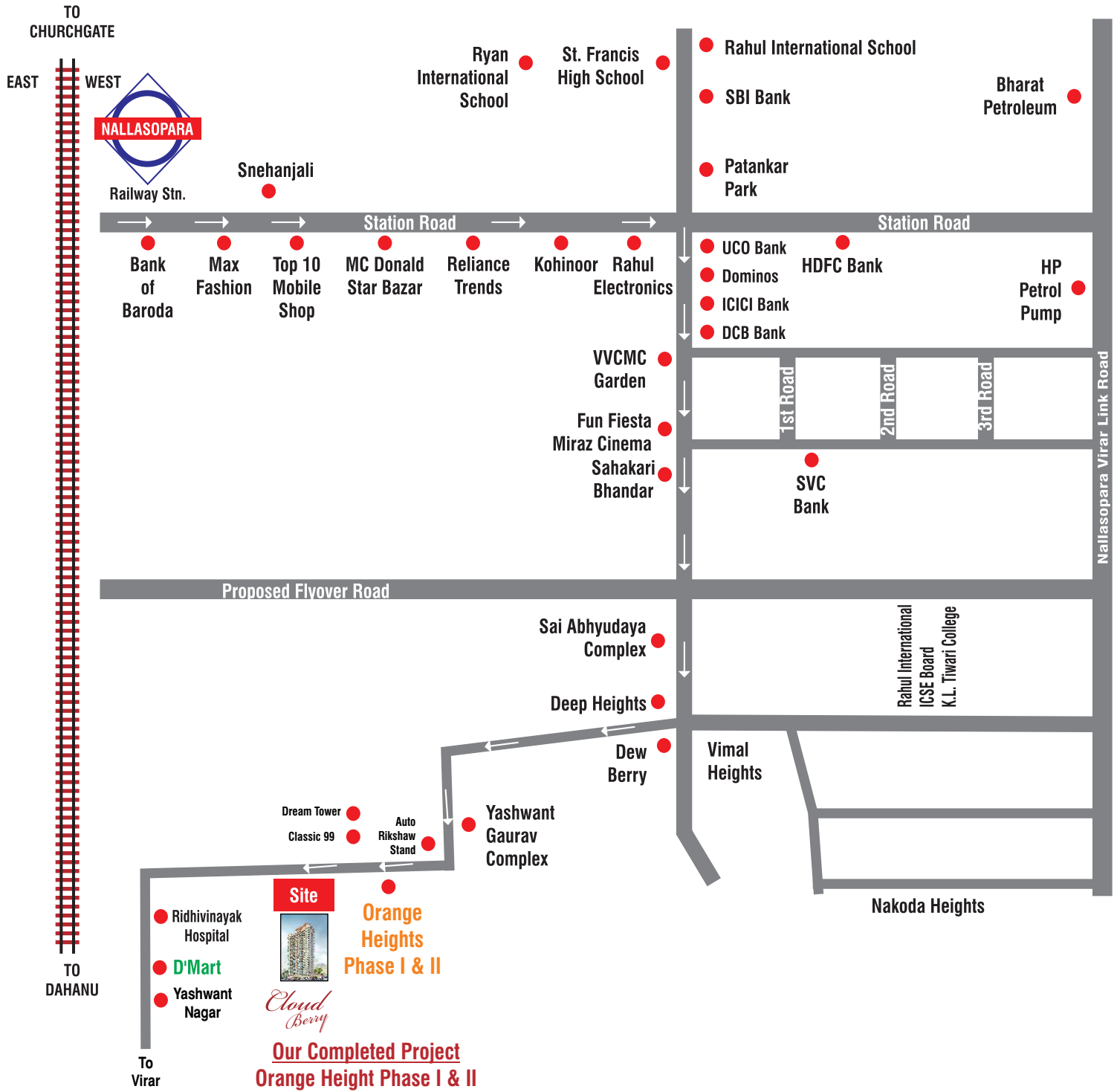


HOSPITAL



FUN FIESTA

Location Plan



A Project by :

Project Details as per Maharera



Sai Shivansh Developers



Office No. 105, 1st Floor, Zainabiya Manzil,
Near City Point Hall, Off Achole Road, Nallasopara (East)
401 209, Dist. Palghar.
Email : sshivanshdevelopers@gmail.com

Architect & Engineers
SANAT MEHTA & ASSOCIATES
Mumbai

Site Address :
CLOUD BERRY, Near Orange Heights, Phase II,
Fun Fiesta Road, Nallasopara (West)
401209, Dist. Palghar

ADVOCATE
SUNIL D. PAL
Advocate, High Court
S/5, Jivdani Plaza, Near Sunshine Garden,
Nallasopara (East), Dist. Palghar

The information contained in this brochure is indicative of the kind of development that is proposed. It is prepared in good faith and is for guidance only. It does not constitute part of an offer or contract. Subject to the approval of the authorities or in the interest of the continuing improvement, the developers reserve the right to alter the layout, plans, specification or features without prior notice or obligation.