

— AMBIT —
VISTA
A WORTH-IT LIFE
—
SANTACRUZ (E)

WORTH; AN UNDERLYING LUXURY,
MASTERED BY A 'WORTH-IT' FEW

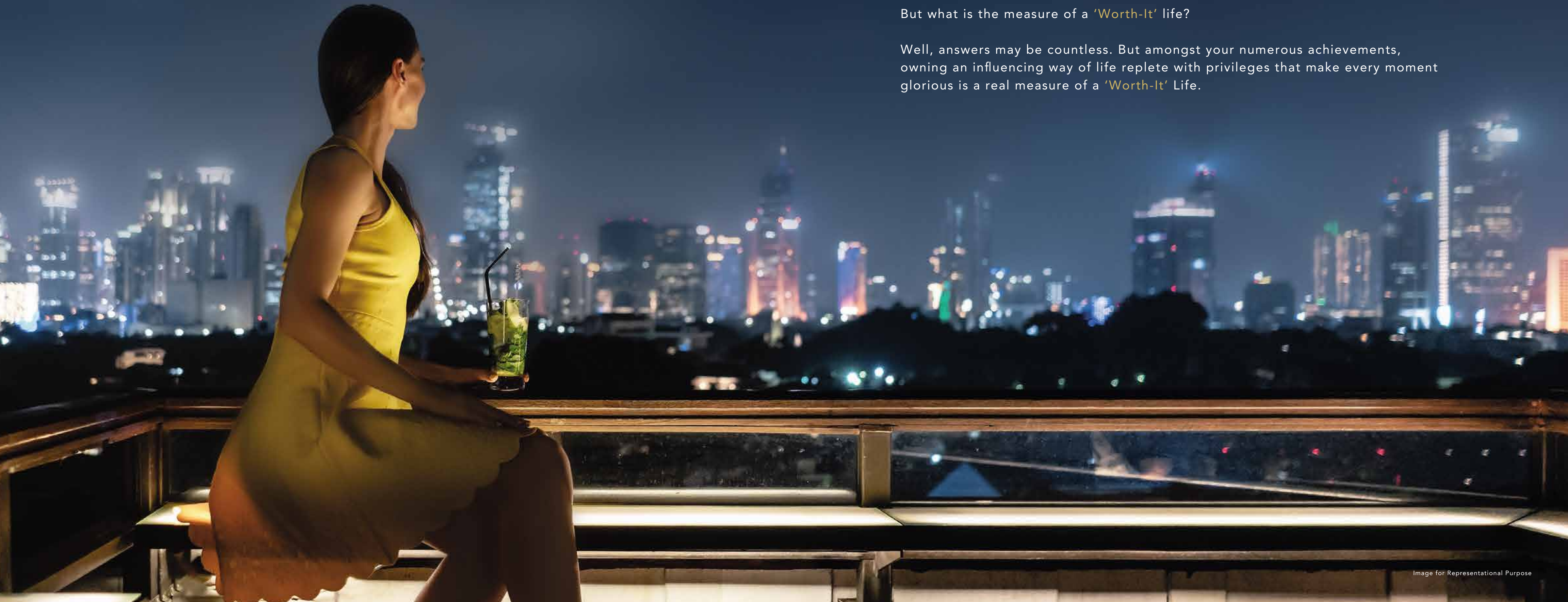
Worth of a Diamond is measured by its carats

Worth of Gold is measured by its purity

Worth of Success is measured by its Milestones & Recognitions

But what is the measure of a 'Worth-It' life?

Well, answers may be countless. But amongst your numerous achievements, owning an influencing way of life replete with privileges that make every moment glorious is a real measure of a 'Worth-It' Life.



— AMBIT —
VISTA
A WORTH-IT LIFE

A '**WORTH-IT**' FEELING
OF SELF-ACTUALIZATION

Worth-it is more than just a phrase. It evokes a sense of self-realization.

AMBIT VISTA is a living example of this belief and serves a host of rare privileges.

It is about rediscovering a unique luxury; it is the privilege of time, space and sense-pleasing experiences.

A LANDMARK
A CULTURE OF ACCOMPLISHMENT
A 'WORTH-IT' MASTERPIECE

Life is inviting and fulfilling at **AMBIT VISTA**
A soul-pleasing and pride-empowering landmark towering
above Santacruz's most-preferred locality.



WELCOME TO

—AMBIT—

VISTA

A WORTH-IT LIFE

AFFLUENTIAL
AUTHORITATIVE
& A **'WORTH-IT'** ADDRESS OF PRIDE

A constellation of premium abodes with sundecks, spread across an extravagant space, the landmark offers unparalleled conveniences, luxuries, and a rare sense of achievement.



EARNING THE RECOGNITION WRAPPED AS AN EVNY IS TRULY 'WORTH IT'

Of many features, the project's magnificence, the preferred locality of Santacruz, exceptional carpet size and sundecks are the game changers.

PROJECT HIGHLIGHTS

- Premium 2, 3 & 4.5 Bed Residences with Sundecks
- Grand Entrance Lobby
- Lavish Carpet Size & Sundecks
- Automated Robotic Car Parking
- Valet Parking Service
- Energizing Club Life
- Glamorous Skylife Indulgences
- 4 Tier Security Systems
- 24x7 CCTV Surveillance & Security

A TRANSCENDING FEELING;
WORTH CHERISHING EACH TIME YOU ARRIVE

A Grand Entrance Lobby



LUXURY OF SPACE,
A TREASURY OF CONVENIENCES,
A 'WORTH-IT' LEGACY

Premium Residences





SPACE, SUNLIGHT & AN EXPANSIVE
CARPET AREA OF WORTHIER COMFORTS

LUXEPACIOUS RESIDENCES WITH SUNDECKS

At the heart of Santacruz East's emerald cove, Prabhat Colony hosts 84 unique residences. Towering above the greenery, these luxurious abodes will provide residents with exclusive spaces, conveniences and timeless experiences.



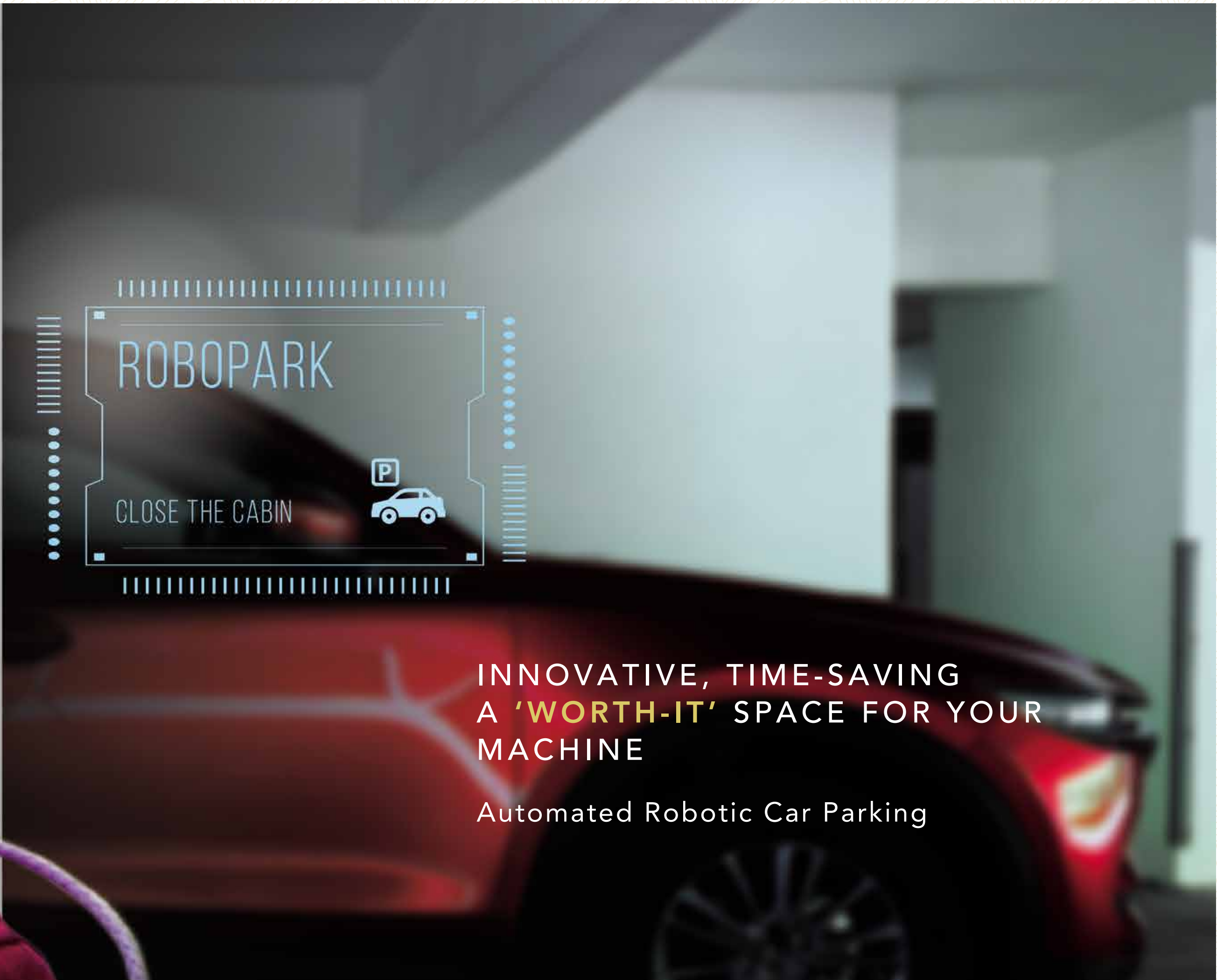
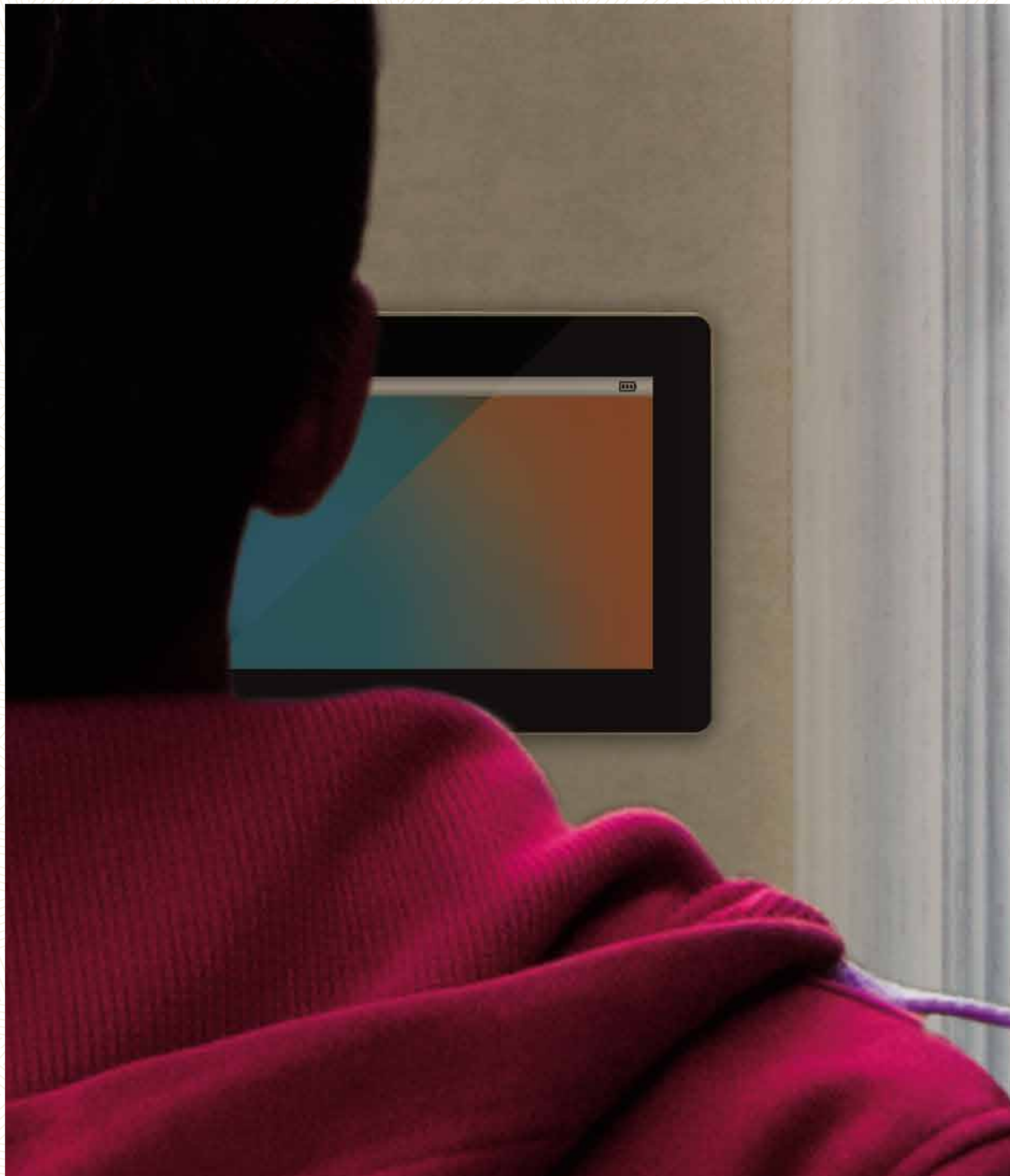
A 'WORTH-IT' ALCHEMY THROUGH ARTISTRY

Planning brilliance and the vision of
magnificence resonate through every square
foot of the uniquely designed apartments.

SUNDECK; A 'WORTH-IT' SALUTATION TO THE RISING SUN AND LIFESTYLE

Redesigned as Sundecks, this space was once treasured, and now making its presence with AMBIT. Homes complemented with sundecks to light up the ambience.





INNOVATIVE, TIME-SAVING
A '**WORTH-IT**' SPACE FOR YOUR
MACHINE

Automated Robotic Car Parking

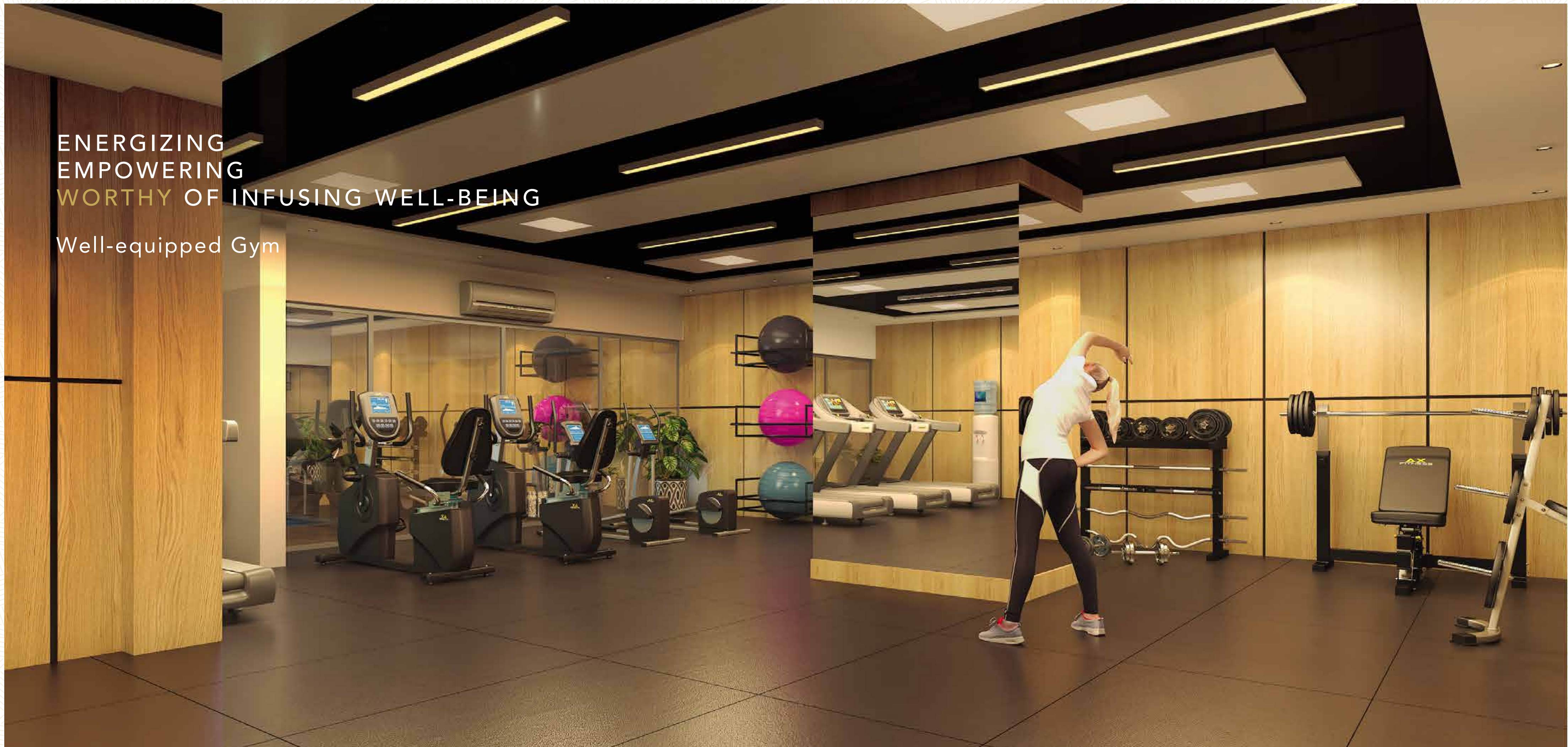
A 'WORTH-IT' REALM OF
PLEASURES FOR AN INDULGENT
REGIME

Lifestyle Indulgences



ENERGIZING
EMPOWERING
WORTHY OF INFUSING WELL-BEING

Well-equipped Gym



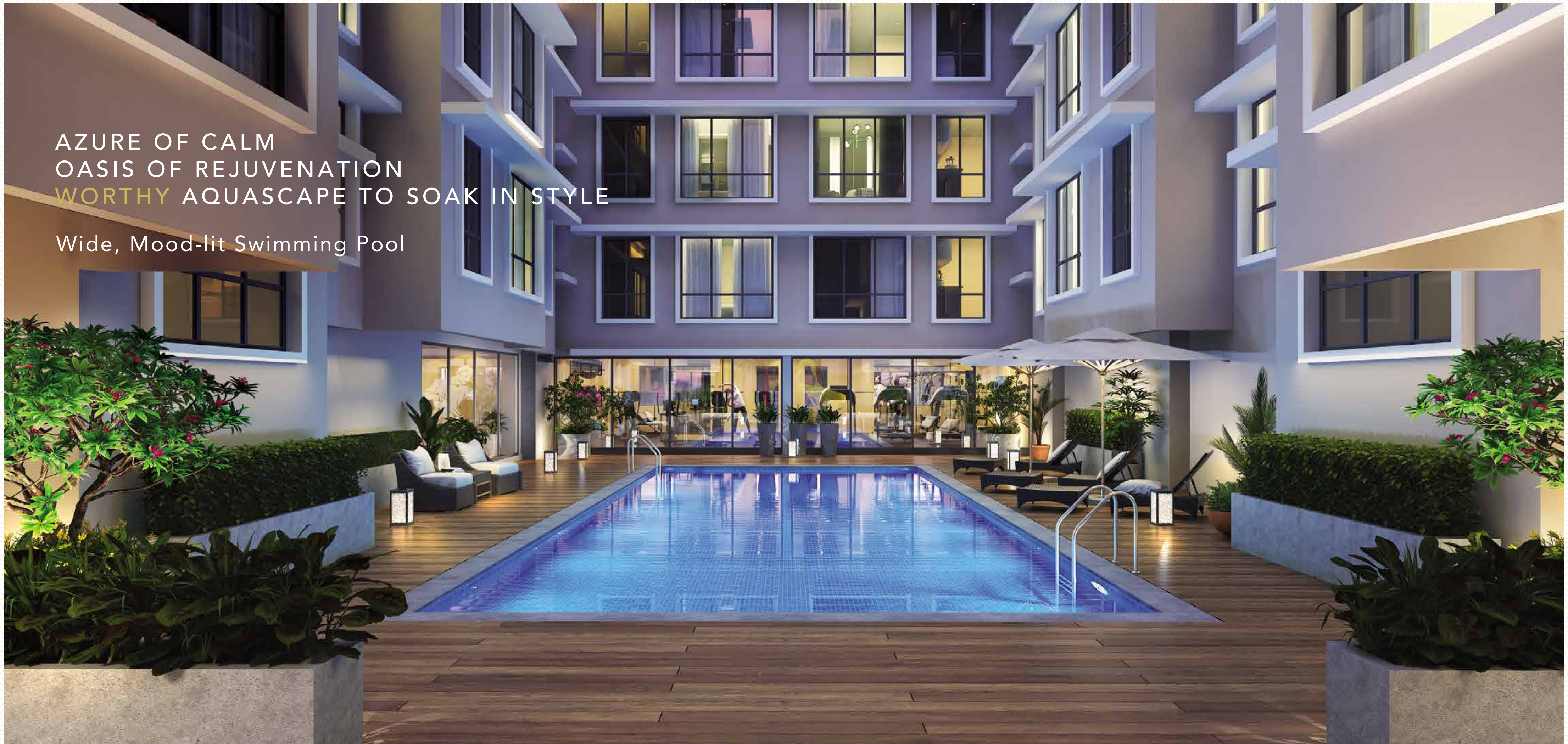
PLAYFUL
PULSATING
WORTHY OF INSPIRING SPORTSMANSHIP

Indoor Games



AZURE OF CALM
OASIS OF REJUVENATION
WORTHY AQUASCAPE TO SOAK IN STYLE

Wide, Mood-lit Swimming Pool





UTOPIAN
SOUL-PLEASING
WORTHY OF WORLD
& HEAVEN'S ENVY

Skylife Leisure Avenues

LEGENDS

- 01. Kids Play Area
- 02. Senior Citizen Zone
- 03. Amphitheatre
- 04. Open Gym
- 05. Wi-Fi enabled Work Zone with Cafeteria
- 06. Cricket Turf
- 07. Star Gazing Deck
- 08. Terrace Garden Walking Area
- 09. Life-size Chess
- 10. Yoga & Meditation Zone
- 11. Sky Bar & Party Deck
- 12. Barbeque Zone



BARBEQUE ZONE



OPEN GYM



SEATING AREA



YOGA

MUMBAI'S PRINCESS
SUBURB'S EMPRESS
YOUR 'WORTH-IT' ADDRESS

Prime Location - Santacruz



FROM SALCETTE TO SANTACRUZ: A 'WORTH-IT' VISTA OF TRANSFORMATIONAL JOURNEY

Santacruz's history dates back to 1600, and it is pretty inspiring. But its potential to own the future is unimaginably inviting and influencing.



SANTACRUZ 2.0

MAKING TOMORROW 'WORTH-IT'
THROUGH ITS TIMELESS ENDEAVOURS

The glory of Santacruz's past never led the space into complacency. The Princess of Suburbs continues to enhance its influencing aura every decade. From being a preferred choice of the Defence and Aviation Ministry to hosting the Aqua 3 Metro line and more, the Princess commands makeover.



THE NUCLEUS OF MAKEOVERS WHERE THE WORLD GETS DRAWN TO YOU

Santacruz is an axis where the celebrated worlds of pleasure, business and power surround. Consider this space as a center of rare combinations waiting to deliver you a vista of 'worth-it' lifestyle.





SEAMLESS CONNECTIVITY

- Western Express Highway - 2 Mins
- Santacruz Rly. Stn. - 3 Mins
- Domestic Airport - 5 Mins
- SCLR - 5 Mins
- International Airport - 10 Mins
- Bandra-Worli Sealink - 20 Mins
- JVLR - 20 Mins

EDUCATIONAL & BUSINESS DISTRICT

- Panbai International School - 2 Mins
- Yes Bank HQ - 2 Mins
- Mumbai University - 5 Mins
- CST Kalina Road - 5 Mins
- Bandra-Kurla Complex - 7 Mins
- Podar International School - 10 Mins
- Corporate Parks at Andheri-Kurla Rd. - 12 Mins

LIFESTYLE & PLEASURES

- The Yoga Institute - 2 Mins
- PVR Cinemas - 2 Mins
- Grand Hyatt - 3 Mins
- Taj Santacruz - 5 Mins
- Link Square Mall - 7 Mins
- MIG Cricket Club Bandra (E) - 7 Mins
- Parle Square Mall - 10 Mins
- Juhu Seaface - 15 Mins
- Phoenix Marketcity - 20 Mins

— AMBIT —
VISTA
A WORTH-IT LIFE
—
SANTACRUZ (E)

VALUED BY THE PRESENT,
AWAITED BY THE FUTURE

What we do today will resonate in eternity. Creations built on ethics shall have a far more empowering influence on its creators and the world alike. The projects in progress are built on values that cement ties between lives and holistic lifestyles.



Artist's Impression

AT A GLANCE

PROJECT HIGHLIGHTS

- Premium 2, 3 & 4.5 Bed Residences With Sundecks
- Grand Entrance Lobby
- Lavish Carpet Size & Sundecks
- Automated Robotic Car Parking
- Valet Parking Services
- Energizing Club Life
- Glamorous Skylife Indulgences
- 4 Tier Security Systems
- 24x7 CCTV Surveillance & Security

APARTMENT FEATURES

- Marble Flooring in Living & Dining Area
- Air-con Living Rooms
- Imported Sanitary & Electrical Fittings
- Gas Leakage Detector
- Video Door Phone

GROUND FLOOR AMENITIES

- Gym & Fitness Center
- Indoor Games
- Swimming Pool
- Kids Play Area & Garden

ROOFTOP AMENITIES

- Kids Play Area
- Senior Citizen Zone
- Amphitheatre
- Open Gym
- Wi-Fi enabled Work Zone with Cafeteria
- Cricket Turf
- Star Gazing Deck
- Terrace Garden Walking Area
- Life-size Chess
- Yoga & Meditation Zone
- Sky Bar & Party Deck
- Barbeque Zone

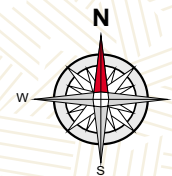
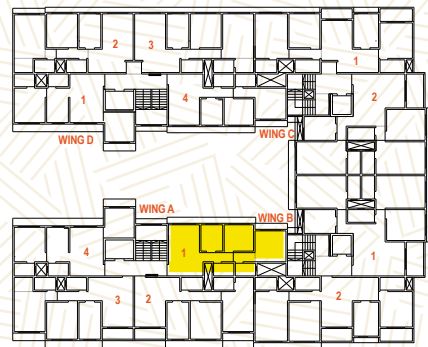
PLANS

— AMBIT — VISTA SANTACRUZ (E)

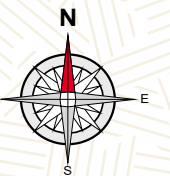
GROUND FLOOR PLAN



WING A - 2 BHK
RERA CARPET AREA - 702



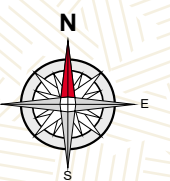
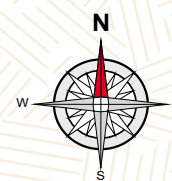
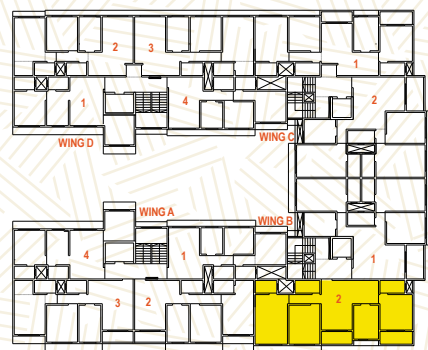
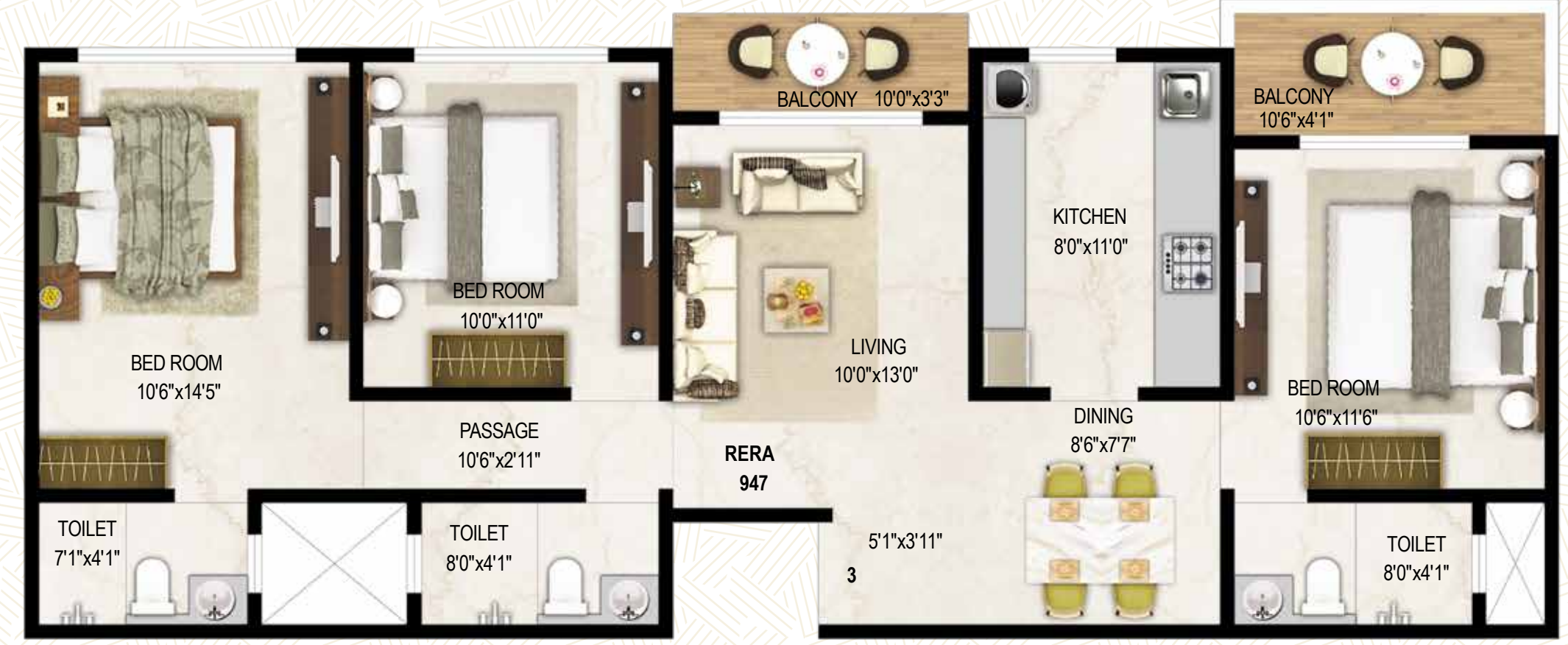
WING A - 2 BHK
RERA CARPET AREA - 733



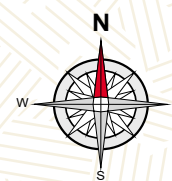
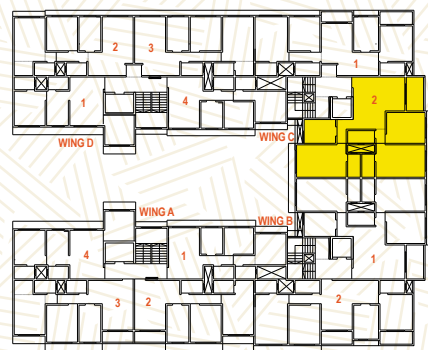
WING B - 3 BHK
RERA CARPET AREA - 1003



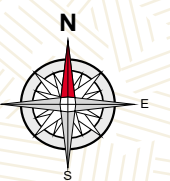
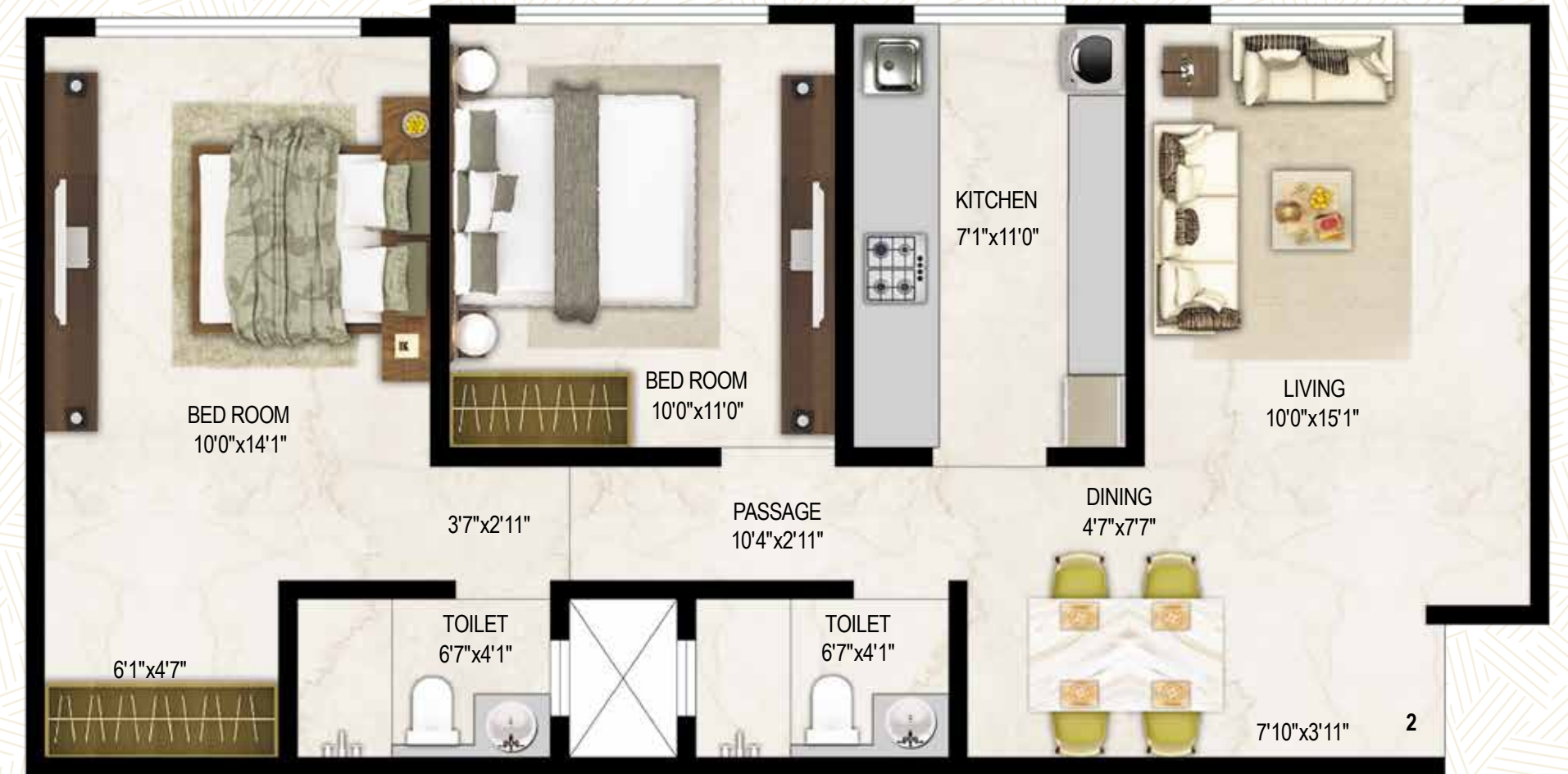
WING C - 3 BHK
RERA CARPET AREA - 947



WING C - 3 BHK
RERA CARPET AREA - 1043

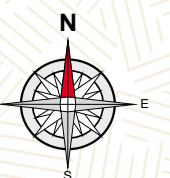
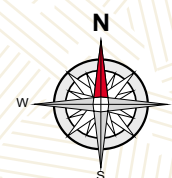
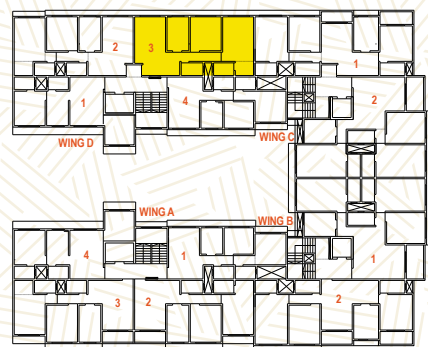
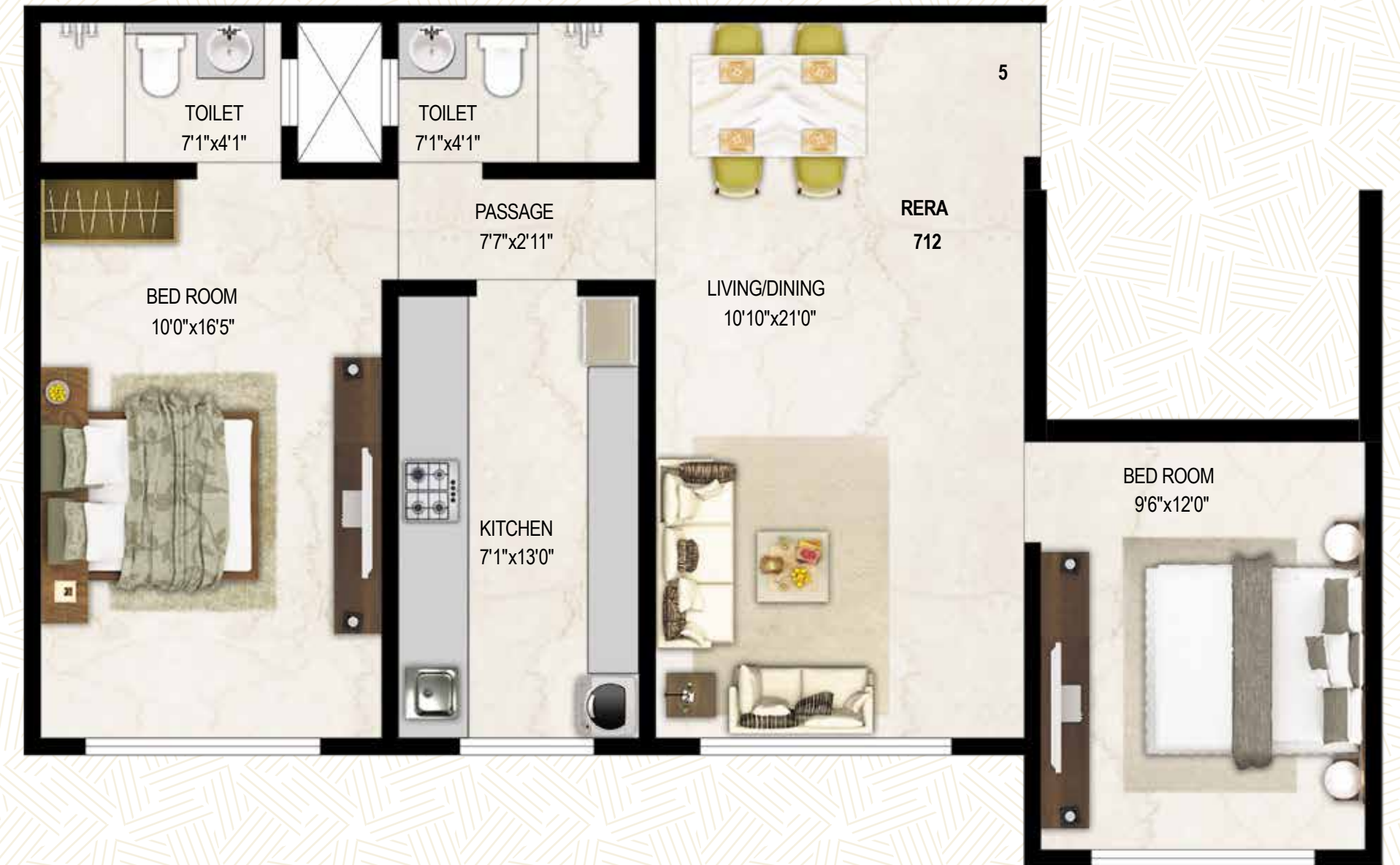
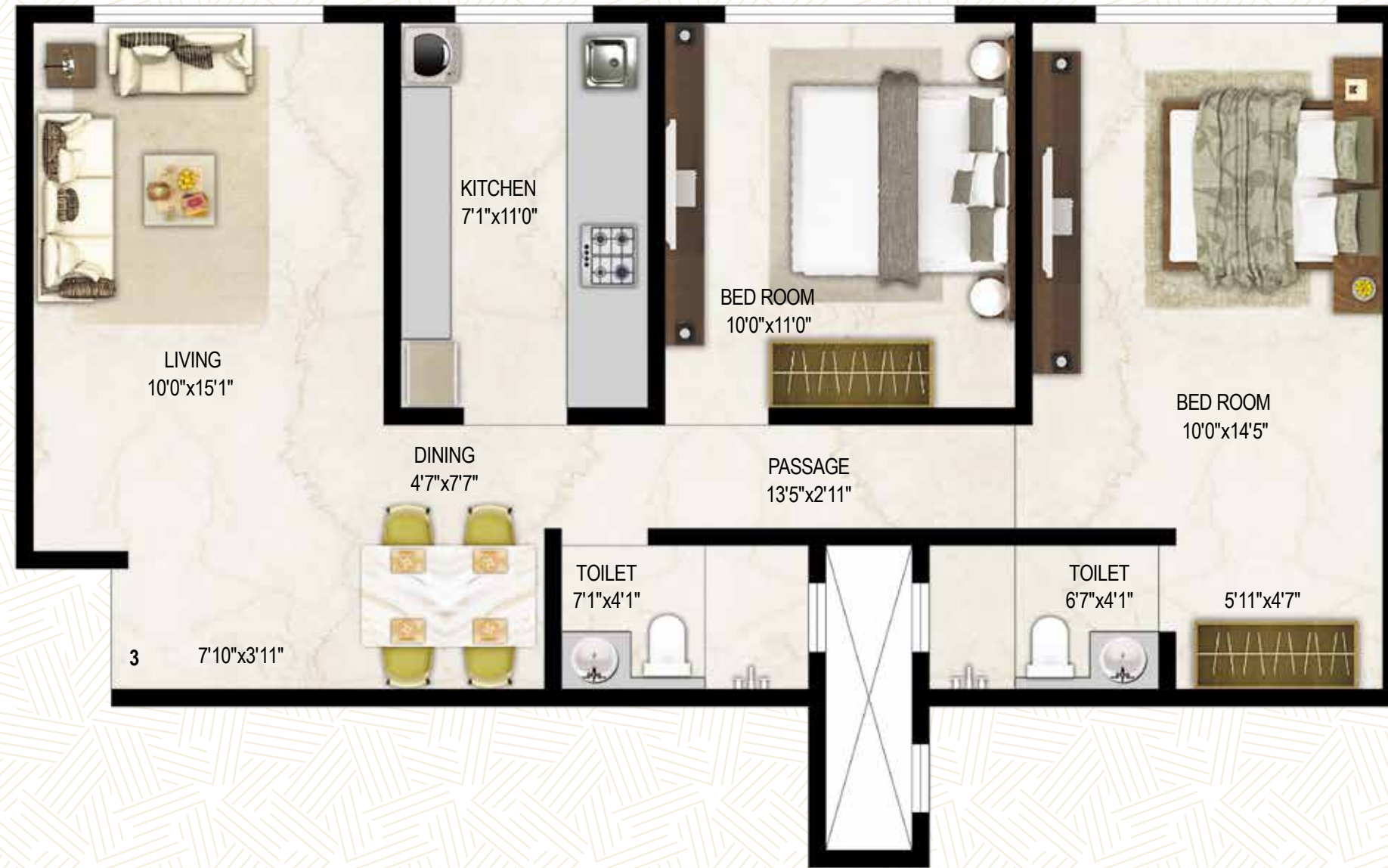


WING D - 2 BHK
RERA CARPET AREA - 704

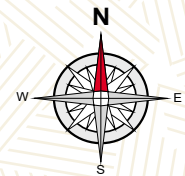


WING D - 2 BHK
RERA CARPET AREA - 709

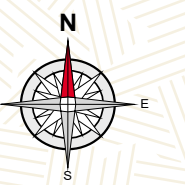
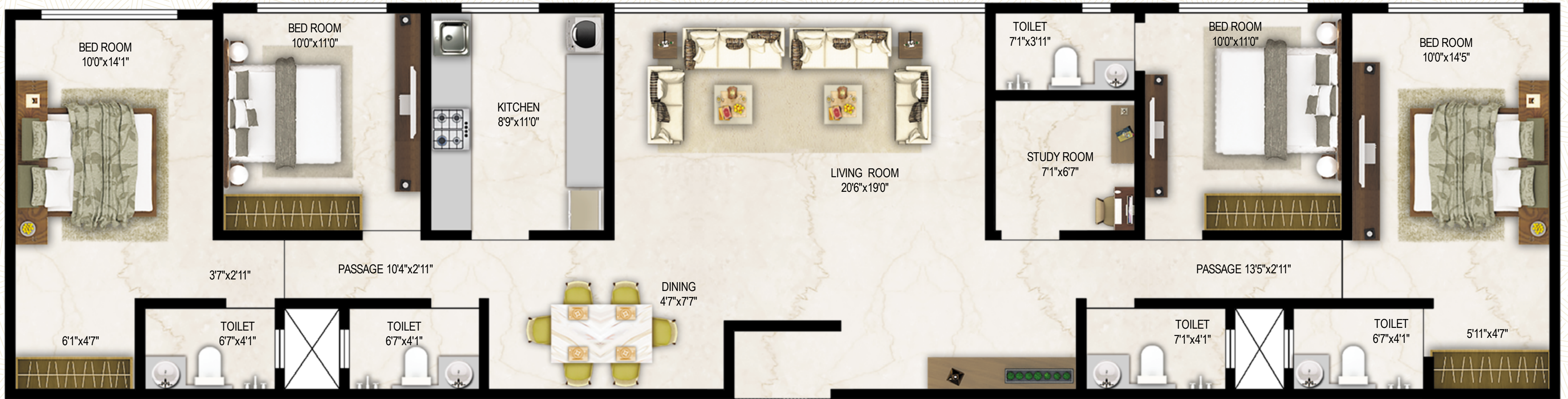
WING D - 2 BHK
RERA CARPET AREA - 712



WING A - JODI FLAT
RERA CARPET AREA - 1466



WING D - JODI FLAT
RERA CARPET AREA - 1413





FOUNDED ON THE BEDROCK OF VALUES

The projects undertaken and handed over are a living testimony to our intent of bringing excellence to life. Our commitment to upgrade the lifestyle continually inspires in creating exceptional residential spaces.



BLUMEN
VIKROLI (W)



ANANDA
BORIVALI (W)



THE PALAZZO
SANTACRUZ (E)



ABIDING BY VALUES. NURTURING THE LEGACY OF EXCELLENCE

Values are the worthy torchbearers powered by humane principles that guide our every intent and action. Advancement or progress through values has far more lasting impact than trends or technologies. At **AMBIT**, values empower us to add value to lives, creations and the future.

13+

YEARS OF EXPERIENCE

1500+

HAPPY FAMILIES

1125k+

DELIVERED AREA

ARRIVE HERE,
MAKE YOUR LIFE A TIMELESS
TREND, AND WITNESS DESTINY
STATING,

"TAKE A BOW, YOUR LIFESTYLE
IS TRULY WORTH-IT"



www.ambitrealtors.com

CALL US TO KNOW MORE: **915 8001 915**

Site Address: CODENAME WORTH- IT, Prabhat Colony. 4th Road, Near H/E Ward Office. Santacruz East, Mumbai - 400 055.

www.ambitvista.com



Maha RERA No. P51800052265
www.maharera.mahaonline.gov.in

Disclaimer: The Plans, Specification, Images and other details herein are only indicative. The Developer/Promoter reserves the rights to change any or all of these in the interest of the development. Architect's impressions are used to illustrate the amenities, specifications, images and other details.