

A project of SALARPURIA SATTVA GROUP

Live with **Pride.** In the heart of the city.

Necklace Pride
Live. Work. Play. In the heart of the twin cities

Off Tank Bund Road, Hyderabad.





Necklace Pride
Live. Work. Play. In the heart of the twin cities

Live in **Pride** in Hyderabad

The twin cities of Hyderabad and Secunderabad are renowned for their glorious history, pearls and bangles, delicious biryani and leisure lifestyle. Very Soon, Hyderabad will have a new pride. Salarpuria Sattva's Necklace Pride.

Necklace Pride is an 8.5 acre magical community which is being built on the less explored side of Tank Bund. It offers 2, 3 and 4 BHK stylish apartments spread across 5 imposing towers of 14 floors each, and surrounded by life-changing amenities that you truly deserve.

Welcome to Necklace Pride.

Welcome to the new Pride of Hyderabad.





Pride of Hyderabad: Hussain Sagar.



LOCATION MAP



Marriott Hotel
0.5 Km.



Secunderabad
Railway Station
2 Kms.



Hussain Sagar Lake
Less than a Km.

A young man and woman are shown in profile, looking out of a window. The man is on the left, wearing a light-colored striped shirt, and the woman is on the right, wearing a white top. They are both smiling and looking towards the right. The window is white and has a view of a bright blue sky with scattered white clouds. The lighting is bright and natural, suggesting daytime. The overall mood is positive and hopeful.

Life is a promise, fulfill it with **Pride.**



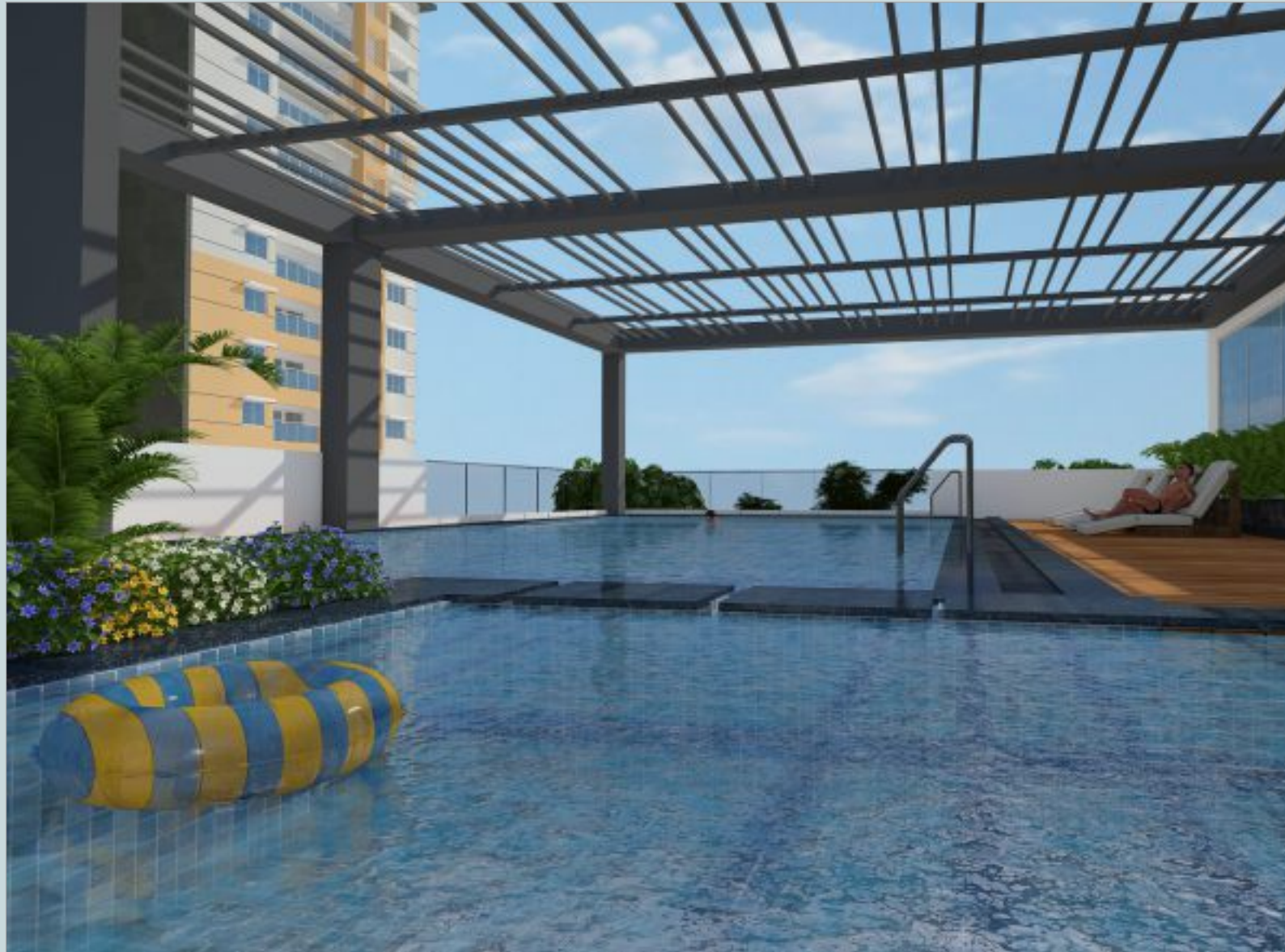
A design that can impress THE SKIES.

Necklace Pride is the perfect balance of style and substance, a convergence of reality and dreams, a meeting place of perfection, purpose and a fusion of beauty and intelligence.

The exterior landscaping offers ample open and green spaces. The 100% Vaastu compliant apartments are designed to store the good energy, circulate the fresh air and reflect natural light. And the magnificent towers can make even the sky gaze in amazement and wish that it met the Earth right here. All in all, Necklace Pride design is sure to impress the skies.

Life is a dream, wake up with **Pride.**





No dream too big at NECKLACE PRIDE.

Necklace Pride is big enough to accommodate dreams of any nature and size. You want peace, its there. You want amusement, its there. You name it and you have it. Live. Work. Play.

All the amenities here have been carefully planned and the sole inspiration behind them is you. Necklace Pride is ahead of its time, and promises a life that will not just elevate your lifestyle, but also delight you.

Life is beautiful, celebrate with **Pride.**





Facilities that can make the
NEIGHBORHOOD ENVIOUS.

Indoor

- An Ultra-modern 20,000 Sft. Clubhouse
- Terrace Swimming Pool
- Kids Pool
- Multi-purpose Hall
- Well-equipped Gym
- Indoor Badminton Court
- Billiards
- Table Tennis
- Sauna & Jacuzzi



Life is a game, play it with **Pride.**





AT NECKLACE PRIDE, its the best or nothing.

The Salarpuria Sattva Group has left no stone unturned to make Necklace Pride the magical place that adds life to the canvas of your dreams.

Outdoor

- Park
- Sitting area
- Sand pit for toddlers
- Water feature
- Tennis Court
- Basket Ball Court



Life is beautiful, live it in **Pride.**

THE STYLISH 2, 3 & 4 BHK Apartments.

The stylish 2, 3 and 4 BHK apartments are designed to breathe life into you and everything you do. The colors are mild to relax your mind and body as soon as you step in. Every corner in your home at Necklace Pride is designed around your personality and is sure to accolade your lifestyle in every way. It's a perfect home that redefines perfection.



SPECIFICATIONS

STRUCTURE

RCC framed structure

FLOORING

COMMON AREA:

- i Lift lobby: Granite flooring/Vitrified flooring
- ii Staircase kota stone flooring
- iii Corridors: Vitrified tiles flooring

APARTMENT

- i Foyer-vitrified tiles flooring
- ii Living & dining-vitrified tiles flooring
- iii Bedrooms & kitchen-vitrified tiles flooring
- iv Balcony & utility-antiskid tiles flooring

TOILETS

- i Ceramic tile flooring
- ii Glazed/ceramic tile dado up to 7' height

KITCHEN

- i Black granite kitchen counter
- ii Stainless steel sink with single bowl & single drain board
- iii Hot & cold wall mixer - 1 no.
- iv Provisions for water heater & purifier fixing
- v Inlet & outlet for washing machine

TOILETS

- i Chromium plated fittings
- ii Hot & cold wall mixer for all the toilets
- iii Health faucet for all the toilets
- iv Granite counter top washbasin in master bedroom
- v European water closet (EWC)

DOORS

- i Wooden door frame for all doors
- ii Main door one side teak veneer shutter with melamine polish
- iii All other doors made of flush shutters with enamel painting

WINDOWS

- i Anodized aluminum windows with mosquito mesh
- ii Ventilators for toilets

PAINTING

- i Exterior walls with texture finish
- ii Internal walls with plastic emulsion & ceiling with all bound distemper

ELECTRICALS

- i TV point in the living room & master bedroom
- ii Fire resistance electrical wire of reputed make
- iii One earth leakage circuit breaker for each apartment
- iv Electrical modular switches of reputed make
- v One miniature circuit breaker for each room provided at the main distribution box in every apartment
- vi Split AC power in master bedroom
- vii Conduit provisions for AC in all other bedrooms
- viii Lighting arrester for the building

CABLE TV

- i An exclusive network of cable TV will be provided with a centrally controlled room at a convenient location (users to pay the operator on the monthly basis)

TELEPHONE & INTERCOM FACILITY

- i Telephone points in the living areas
- ii Intercom facility from each apartment to the security room, clubhouse & other apartments

LIFT

Automatic passenger lifts

POWER BACK UP

Stand by generator for lights in common area, lifts & pumps.
Individual apartments to have a back up of 1.25 KVA, 1.5 KVA & 2 KVA for 2, 3 & 4 BHK respectively

SECURITY SYSTEM

Round the clock security. Trained security personnel

MASTER PLAN



LEGEND

1. Residential entry/exit
2. Residents drop off area
3. Amenity Block / Clubhouse
4. Theme Garden
5. Senior citizen relaxation zone
6. Kids play area
7. Water Bodies
8. Roof-Top Swimming Pool
9. Lawn Tennis Court
10. Basket Ball Court
11. Residential exit
12. Ramp



- Type: 3 BHK + 3 T
Super Builtup Area 1884 Sq. Ft.

- Type: 3 BHK + 2 T
Super Builtup Area 1293 Sq. Ft.



- Type: 2 BHK + 2 T
Super Builtup Area 1342 Sq. Ft.



- Type: 2 BHK + 2 T
Super Builtup Area 1280 Sq. Ft.



TRUST. IT'S WHAT WE BUILD

Reputation.

That which is built by propaganda.
Or by a decent body of work.

What makes Salarpuria Sattva Group different from other property developers? Simple, we've initiated more verticals in real estate domain than any other player.

But then, that's not publicity overkill.

The group, today, has presence in fields like urban development, hospitality, retail, interiors, facilities management and a strong foothold in commercial and residential development domain.

The group has accomplished over 15 million sft. property development so far, with around 30 million sft. of future development spread across various cities in India.

The Group's corporate office.



LUXURIA

8th Main, Malleshwaram, Bangalore



MAGNIFICIA

Old Madras Road, Bangalore



EAST CREST

Near Budigere Cross, OMR Road, Bangalore



LAUREL HEIGHTS

Hesarghatta Main Road, Bangalore



ASPIRE

Hennur Main Road, Bangalore



SEJORITA

Sarjapur Main Road, Bangalore



CELESTA

Adjacent to KR Puram Lake, Bangalore



CADENZA

Kudlu Gate Junction, Bangalore



NORTHLAND

Hennur Main Road, Bangalore



KINGS DOMAIN

Near Indiranagar, Bangalore



CASA IRENE

Bannerghatta Main Road, Bangalore



CASA CRESCENT

Nandidurga Road, Bangalore



PIPAL TREE

Off Magadi Main Road, Bangalore



GOLD SUMMIT

Hennur Main Road, Bangalore



GREENAGE

Hosur Main Road, Bangalore



Divinity

On Mysore Road, Bangalore



WATER'S EDGE

Sancoale, Goa



H & M ROYAL

Kondhwa, Pune



NAVARATNA RESIDENCY

Avinashi Road, Coimbatore



OUR PROJECTS



TRUST. IT'S WHAT WE BUILD

ISO 9001, 14001 & 18001
Certified Organisation

Corporate Office: Salarpuria Windsor, #3, Ulsoor Road, Bangalore - 560 042, Karnataka, India.

Ph: +91 80 4269 9000 | Fax: +91 80 4269 9011

www.sattvagroup.in

Bangalore, Kolkata, Hyderabad, Pune, Jaipur, & Vizag

Toll free: 1800 121 3344 Sales: hyd@sattvagroup.in

Site Office: Kavadiguda Main Road, (formerly Praga Tools), Secunderabad - 500 003.