



DAMJI SHAMJI
SHAH GROUP

SINCE 1962

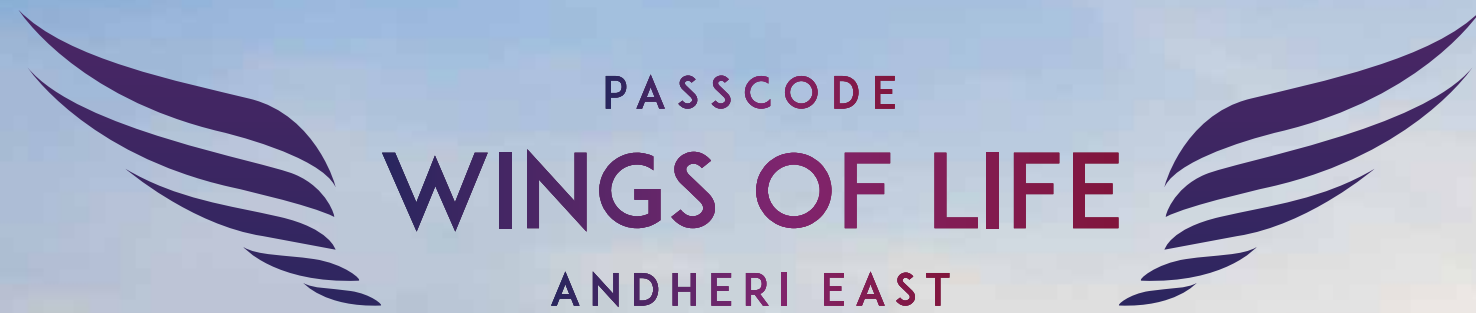
ADD WINGS TO YOUR LIFE,
LET YOUR ASPIRATIONS FLY HIGH!

PASSCODE
WINGS OF LIFE
ANDHERI EAST



Artist's Impression





PASSCODE
WINGS OF LIFE
ANDHERI EAST

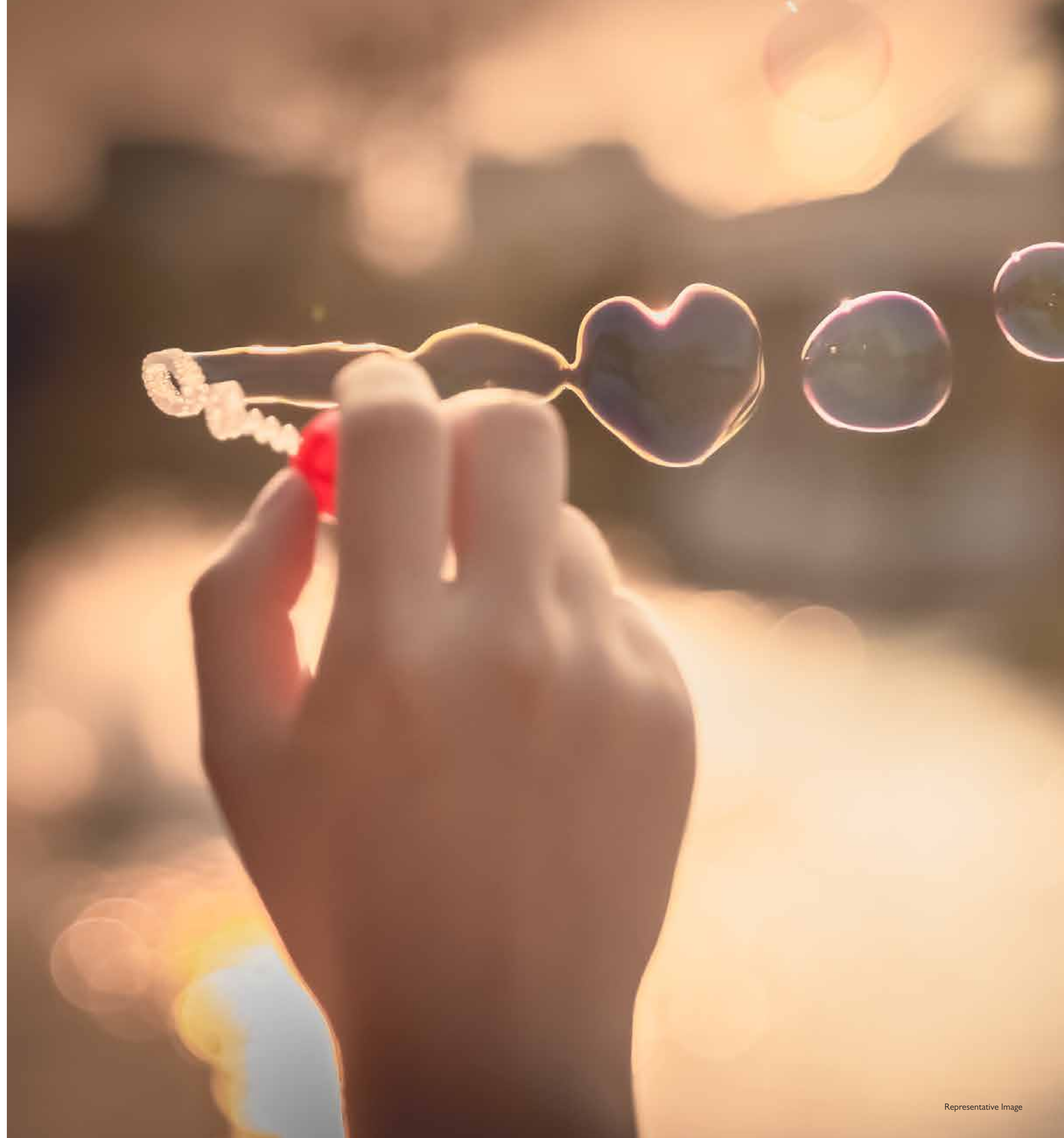
A perfect choice to explore new horizons,
encounter freedom and add happiness to your life.
Get ready to rise with an exuberant development
set to grace in the micro market of Andheri East.

A notch above, a different league for you to explore
the breath-taking airport views and that truly
adds wings to your flight of imagination.

WHAT DOES ADDING WINGS TO YOUR LIFE MEAN?

While you have been living a content life,
we bring to you something more that takes
you to a higher life.

A beautifully woven journey to experience
new things for the first time. A lifestyle
that soars above your expectation.





WHY WALK A NORMAL LIFE WHEN YOU CAN FLY?

To fly higher, all you must do is add wings to your routine life.

Every single thing here is a bit extraordinary. Everything that you ever wished for; we have added a feather touch that enhances the beauty of every moment you spend here.

A NOTEWORTHY ADDRESS FOR A NOTEWORTHY LOCATION.

Passcode Wings of Life keeps you close to the pulse of the city. With easy access to corporate hubs of Andheri (E), Powai, BKC, and close proximity to international airport, metro stations, and railway stations, it makes for an ideal residential complex for corporate professionals and successful entrepreneurs. Clearly, it is one of the most central and coveted destinations in the city.



SITUATED NEXT DOOR TO ALL YOUR NEEDS!

CONNECTIVITY



| | |
|---|--------------|
| Sakinaka Metro Station |650 mtr |
| Marol Metro Station |1.6 km |
| Chhatrapati Shivaji Maharaj International Airport |2.0 km |
| JB Nagar Metro Station |3.1 km |
| Western Express Highway |4.3 km |
| Domestic Airport |5.0 km |
| JVLR |5.5 km |
| Andheri Station |6.2 km |

EDUCATION INSTITUTIONS



| | |
|--|-------------|
| Nahar International School |2.3 km |
| St. Lawrence High School |2.5 km |
| St. John The Evangelist High School |2.5 km |
| Narayana E-techno School |2.6 km |
| Bombay Scottish School |2.7 km |
| Divine Child High School |3.0 km |
| Marol Education Academy's High School & Junior College |3.0 km |
| Shriniwas Bagarka College & S. P. D. T College |3.3 km |
| IIT Mumbai |5.5 km |

SOCIAL LIFE



| | |
|---------------------------------|--------------|
| Domino's Pizza |800 mtr |
| McDonald's |1 km |
| The Bigg Small Café |1.2 km |
| Tap Resto Bar |1.3 km |
| British Brewing Company |1.3 km |
| Rodeo Drive |2.1 km |
| Citrus - Fine Dining Restaurant |2.4 km |

LUXURY LEISURE



| | |
|-------------------|--------------|
| JW Marriott |750 mtr |
| ITC Maratha Hotel |1.8 km |
| The Lalit |1.8 km |
| Hilton Mumbai |2 km |
| The Leela |2.2 km |

COMMERCIAL HUBS



| | |
|-----------------------------|-------------|
| Times Square |1.1 km |
| WeWork |1.5 km |
| The Empire Business Centre |2.3 km |
| Divine Hub Co-working Space |3.4 km |
| Kanakia Wall Street |3.7 km |

MALLS & ENTERTAINMENT



| | |
|--------------------|--------------|
| Maxus Cinema |750 mtr |
| Phoenix Marketcity |2.7 km |
| PVR |2.9 km |
| R-City Mall |5.0 km |

SUPERMARKET



| | |
|--------------------|--------------|
| Orchid Supermarket |270 mtr |
| Grofer's Hub |700 mtr |
| DMart |3.5 km |

HEALTHCARE



| | |
|--------------------------------------|--------------|
| Central Hospital & Child Care Centre |100 mtr |
| New JP Hospital |260 mtr |
| Paramount General Hospital & ICCU |550 mtr |
| Metro Hospital |1.6 km |
| Seven Hills Hospital |3 km |

FUTURE AND EXISTING INFRA PROJECTS



- Metro Line 1 (Functional)
- Metro Line 3 (Under Construction)



DS

MAN'S

DRAGON

ZEGNA

PAUL

CALVIN

B & D

CARDIN

ORANGE

OUTLOOK



PROJECT HALLMARKS

2 Basements + Stilt + 12 Floors

Thoughtfully Planned 1 & 2 Bed Residences

Gated Community Living

Rooftop Amenities

Abundant Open Spaces

Ample Car Parking

20+ Lifestyle Amenities

A PLACE TO PLAY, LEARN AND GROW.

Ground Floor (Outdoor Activities)

- Skating Rink
- Senior Citizen Area
- Kids' Play Area



Skating Rink



Kids' Play Area

Representative Images



Senior Citizen Area

TRULY ICONIC SPACES DESIGNED FOR THE SELECT FEW JUST LIKE YOU!

Ground Floor (Indoor Activities)

- Board Games Zone
- Arcade Zone
- Toddlers' Zone
- Medical Day Care Center
- Spa Room
- Snooker Table
- Air Hockey
- Foosball Table
- Guest Room



Spa Room



Yoga Room



Gym



Snooker Table

Artist impressions



Toddlers' Zone

EXPANSIVE ROOFTOP LIFESTYLE LIKE NO OTHER.

Terrace Floor

- Reflexology Path
- Games Zone
- Banquet Area
- Gazebo
- Play Zone
- Sit-out Corner
- Open Gym
- Jogging Track

And Many More...



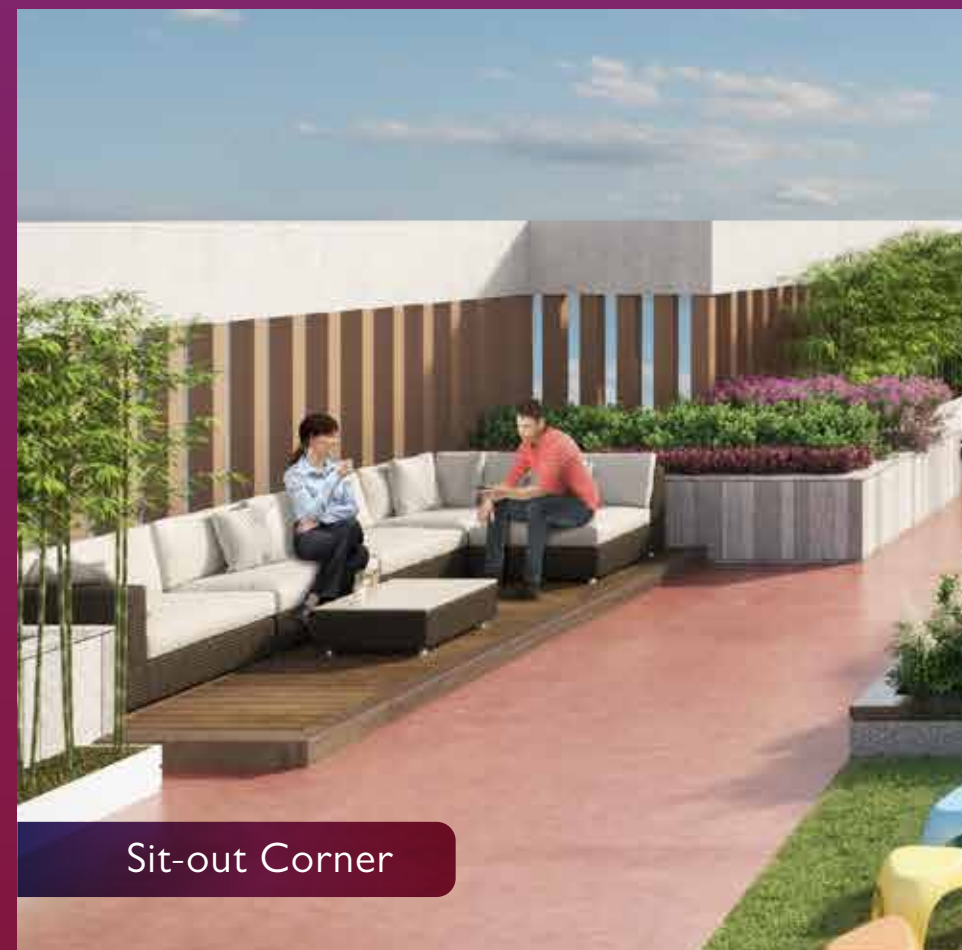
Jogging Track



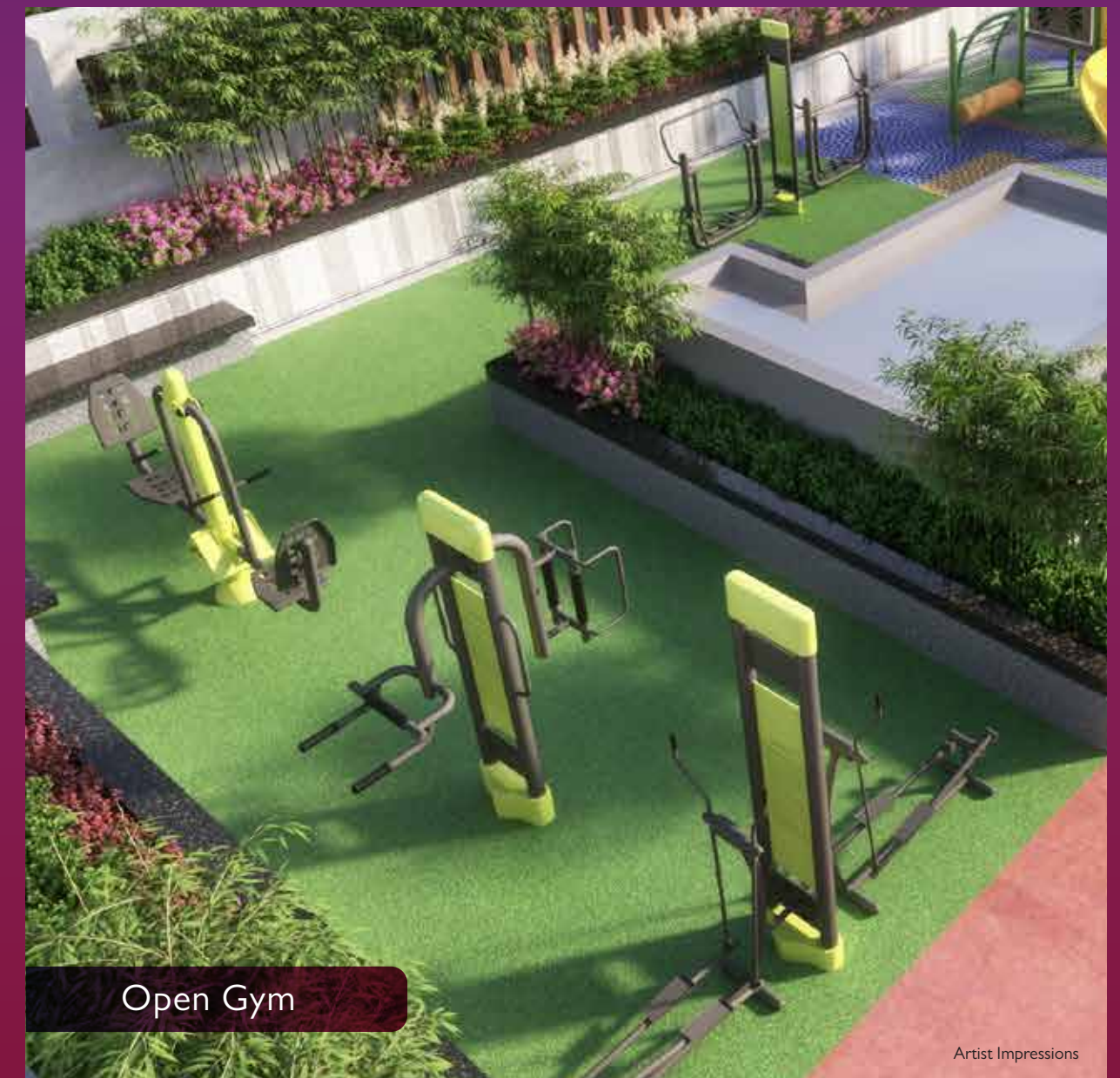
Games Zone



Play Zone



Sit-out Corner



Open Gym



LIVING ROOM

Artist's Impression

ENDLESS OPPORTUNITIES THAT SOARS HIGH EVERYDAY!

Never miss an opportunity to celebrate your moments and turn them into memory in thoughtfully-designed spaces. Make the most of family time and even enjoy 'me-time' at your new home. With our well-ventilated design philosophy, we assure homes that utilise light, height and air to redefine life.

RESIDENCE AMENITIES

- Vaastu-compliant Homes
- Vitrified Flooring
- Parallel Kitchen Platform
- Premium Bathroom Fittings

Representative Image



BEDROOM

Artist's Impression



DAMJI SHAMJI SHAH GROUP
SINCE 1962

Damji Shamji Shah Group is an ISO 9001:2015 certified company. We have established ourselves as one of the most distinguished and highly trusted real estate developers across Central and Eastern Suburbs of Mumbai and Thane. We always set a new benchmark for our every creation, be it residential, commercial or recreational construction. Our commitment towards our customers is evident in our projects, which represent quality, comfort and splendor.

Over the course of 60 years in construction and developing projects, we have understood every need of our customer and thereby have created an environment that is best suited for them. We have introduced innovative concepts in construction to set new lifestyle standards. For this reason, we bring out the best of design plans, amenities, locations, which will go a long way in securing a better environment to live or work in.

We at Damji Shamji Shah Group help create memories by making world-class homes and offices. A place that serves generations. They are not just enclosed walls comprising of bricks but laughter and togetherness. We are a Group that is steadfast in efficiency and meticulous in approach. You can count on us.

LEGACY AT ITS FINEST

60 YEARS
OF LEGACY

8 MILLION SQ.FT.
DELIVERED

6200 HAPPY
FAMILIES


20 MILLION SQ.FT.
UNDER DEVELOPMENT

**DESIGN &
PROJECT ARCHITECT**



DAMJI SHAMJI SHAH GROUP
SINCE 1962

 www.passcodewingsoflife.com

 This project has been registered under MahaRERA Registration No.: P51800032960 & is available on the website <https://maharera.mahaonline.gov.in> under registered projects.

Site Address: Sales Lounge - Passcode Wings of Life, Near MTNL Exchange, Andheri - Kurla Rd, Andheri (E) - 400072

Disclaimer: This Advertisement/printed material does not constitute an offer or contract of any nature whatsoever between the promoters and the recipient. All transactions in this development shall be subject to and governed by the terms & conditions of the agreement for sale to be entered into between the parties. All internal dimensions for carpet area are from unfinished wall surfaces. Minor variations up to (+/-) 3% in actual carpet areas may occur on account of site conditions/ columns / finishes etc. In toilets, the carpet areas are inclusive of ledge walls (if any). Conversion: 1 sq. Mtr. = 10.764 sq. ft. 1 meter = 3.28 feet. Plans and amenities mentioned in here are as per the proposed sanctioned plans. This project registered under the name 72 Marina - Phase I - Tierra and Torres & as marketed as Passcode Wings of Life. Project Funded by HDFC Limited. *T&C Apply.