

*Luxury Homes* FROM DLF



  
THE  
BELAIRE



Great location - DLF Golf Links, Gurgaon

In the heart of the impressive & fully inhabited DLF City, Phase V

Superb connectivity, which will have a signal free approach in the near future

Surrounded by super luxury estates, shopping malls, multiplexes, etc.

- Gated community
- Exclusive clubbing facilities
- Healthcare Centre
- School & shopping facilities
- Adequate & dedicated parking
- Multi-tier security system
- 24X7 power back-up through DG sets
- Water Conservation & Sewage Treatment Plant (STP)
- Sound-proof Double Glazed windows that save energy consumption
  - Air-conditioned apartments with VRV system
  - Modular kitchen with appliances
- Jacuzzi in master bath of 4 bedroom apartments

STRUCTURE COMPLETE. POSSESSION IN 18 MONTHS

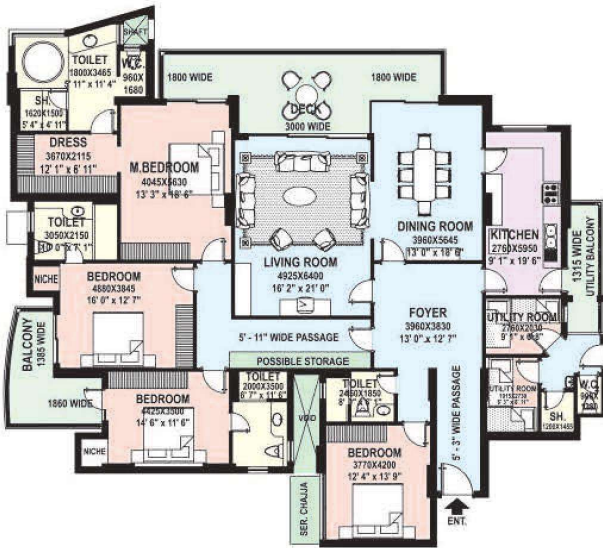
**Actual photograph of The Belaire**



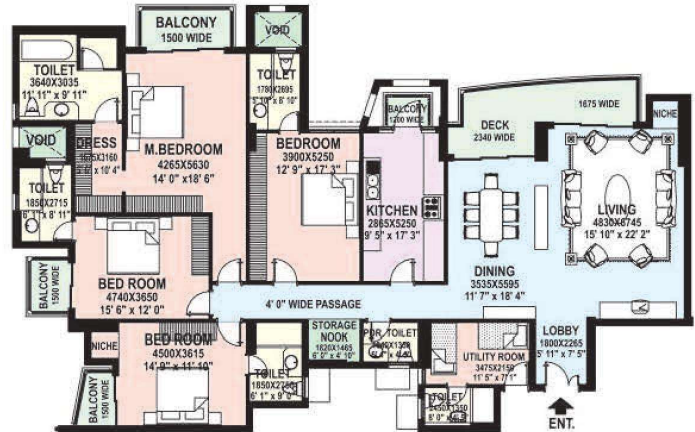
**Perspective view of The Belaire**



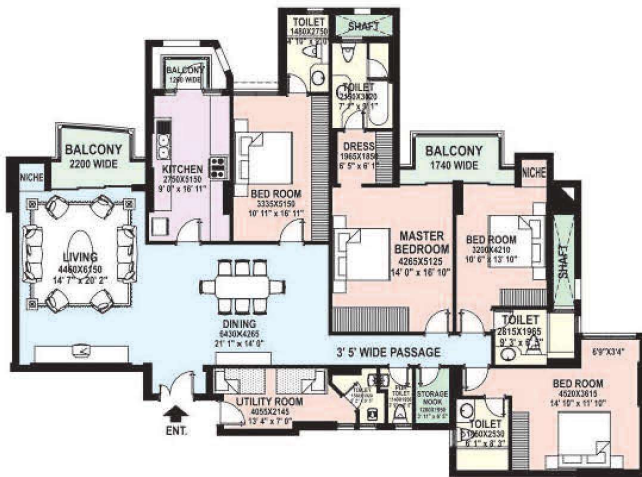
**THE BELAIRE**  
*Luxury Homes FROM DLF*



(4098 Sq. Ft.)



(3430 Sq. Ft.)



(3000 Sq. Ft.)



(2858 Sq. Ft.)

# Specifications

Structure designed for the highest seismic considerations of Zone-V, against Zone-IV as stipulated by the BIS codes , for enhanced safety.

Air Conditioned Apartments with energy efficient VRV / VRF system.

Air Conditioned Lift Lobbies and Entrance Halls.

High Speed Passenger Elevators.

Eco friendly environment with Rain Water Harvesting system, and use of treated water from Central STP for flushing.

Hot Water Supply through geysers in Toilets, Kitchens, and additionally through Solar Water Heaters in the kitchens.

## LIVING/ DINING/ LOBBY/ PASSAGE

Floor	Imported Marble.
Walls	Acrylic Emulsion paint on POP punning.
Ceiling	Acrylic Emulsion paint with limited false ceiling and cornices.

## BEDROOMS

Floor	Imported Laminated wooden flooring.
Walls	Acrylic Emulsion paint on POP punning.
Ceiling	Acrylic Emulsion paint with limited false ceiling and cornices.
Modular Wardrobes	Modular wardrobes of standard make in all the Bedrooms , except in the Utility/Servant's Room.

## KITCHEN

Walls	Tiles up to 2'-0" above counter and Acrylic Emulsion paint in the balance area.
Floor	Anti-skid Tiles.
Ceiling	Acrylic Emulsion paint.
Counter	Granite.
Fittings/ Fixtures	CP fittings, Double bowl SS Sink, Exhaust fan.
Kitchen Appliances	Fully Equipped Modular Kitchen with Hob, Chimney, Oven, Microwave, Dishwasher, Refrigerator and Washing Machine of a standard make and a reputed manufacturer.

## BALCONY

Floor	Terrazzo Tiles.
Ceiling	Exterior paint.

## TOILETS

Walls	Combination of Tiles, Acrylic Emulsion paint and Mirror.
Floors	Anti-skid Tiles.
Ceiling	Acrylic Emulsion paint (with False Ceiling and Cornices in limited areas).
Counters	Marble/ Granite.
Fixtures / Accessories	Glass Shower - partition in toilets, and Under Counter Cabinets, Exhaust fan, Tower rail, Toilet paper holder, Soapdish, of standard make.
Sanitary ware/ CP fittings	Single Lever CP fittings, Wash Basin & Wall-Hung WC, Health Faucet of Kohler/ Roca/ Parryware or equivalent brands. The Belaire/DLF Park Place(Park Towers) - In addition to the above, Jacuzzi provided in Master Bath.

## PLUMBING

Copper piping for water supply inside the toilet and kitchen & UPVC pipes for stacks.

## FIRE FIGHTING SYSTEM

Fire Fighting System with sprinklers, smoke detection systems, etc. as per NBC norms.

## UTILITY / SERVANT'S ROOM

Floor	Terrazzo.
Toilets	Ceramic Tile Flooring and Cladding, with conventional CP Fittings and Chinaware.

## DOORS

Internal doors	Painted Hardwood frame with Painted flush door/ moulded skin Shutters.
Entrance doors	Polished Hardwood Frame with veneered and Polished flush door shutter.

## EXTERNAL GLAZINGS

Windows / External glazings	Energy Efficient, Sound insulating Double glass units with - tinted / reflective and/or clear glass with powder coated Aluminum / UPVC Frames in habitable rooms and Aluminium / UPVC Glazing with Single Pinhead/ Tinted/ Clear glass in all toilets.
-----------------------------	--

## ELECTRICAL

Fixtures/Fittings	Modular switches of Northwest/ Crabtree or equivalent make and copper wiring, ceiling fans in all Rooms and ceiling light fitting in Toilets (except for Utility / Servants' Toilets), Balconies and Passages only.
Power Back-up	100 % DG Power back-up for all the Apartments and Common areas. The Belaire - Blocks A, B, C - Not exceeding 13KVA per apartment. The Belaire - Blocks D, E - Not exceeding 16KVA per apartment. DLF Park Place - Park Tower - Not exceeding 12 KVA per apartment. DLF Park Place - Park Heights - Not exceeding 10 KVA per apartment.

## SECURITY SYSTEM

Secured Gated Community with access Control at Entrances and CCTV for Parking Area and Entrance Lobby at Ground Floor.

## LIFT / LIFT LOBBY

Lift	High Speed Passenger Elevators.
Lift Lobby Floor	Granite.
Lift Lobby Walls	Suitable combination of Granite and Acrylic Emulsion, Textured paint, Embellished with mirror .

## STAIRCASES

Floor	Terrazzo / Mosaic Tiles.
Walls	Flat Oil Paint.

## CLUB FACILITY

Multi Purpose Hall • Dining Facility • Library & Cards Room • Aerobics / Yoga Centre, Gymnasium with all modern equipments like Multi Gym , Treadmills of Technogym / Free motion Fitness or Equivalent make • Health facility like Steam, Spa & Sauna • Indoor sports facility like Billiards Room, Squash Court • Mini Home Theatre • Swimming Pool with Change Rooms, Separate Kids' Pool • Tennis Courts.

Additional facilities for DLF Park Place - Guest Rooms, Business Centre and Mini Super Mart, Shop also provided in the Club facility.

The Multipurpose Hall shall be with Banqueting Facility.



**DLF**   
**BUILDING INDIA**

For further enquiries, contact: DLF Marketing, DLF Centre, Sansad Marg, New Delhi-110001  
Tel: +91 11 23719300, 42102030 Fax: +91 11 23719212 E-mail: homes@dlf.in Website: www.dlf.in  
Marketing Site Office: DLF Park Place, DLF Golf Links, DLF City - Phase V, Gurgaon Tel.: +91 124 6520710

Disclaimer: Furniture shown is indicative of how the unit can be used. No furniture, landscaped gardens or accessories shown in the visuals are provided with the apartment. All floor plans, layout plans and specifications are indicative and are subject to change as decided by the company or Competent Authority. Marginal revision may be necessary during construction. Subject to terms & conditions.