



**New Home.**  
**A Fresh Start.**





WINGFIELD

---

HOME TO NEW BEGINNINGS

Wingfield



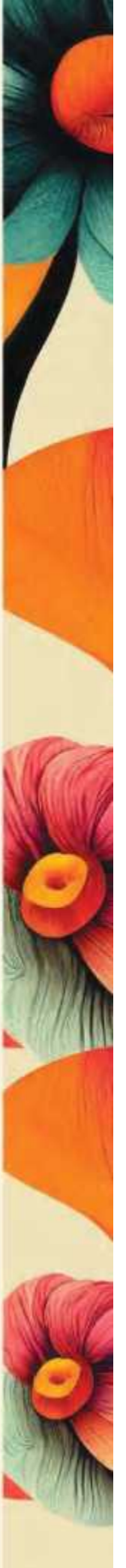


Artist's Impression

## New Home. A Fresh Start.

Starting afresh is a great feeling. Beginning anew at Wingfield makes it truly special. Planned exquisitely to the minutest of details (a cycle dock in the carpark, for example) and executed to exacting standards, Wingfield gives you a home that is stylish and sufficient. Easy location, convenient connection (Proposed Metro Station, and very near to Adyar) make Wingfield a wise choice.

Wingfield Your home to new beginnings.





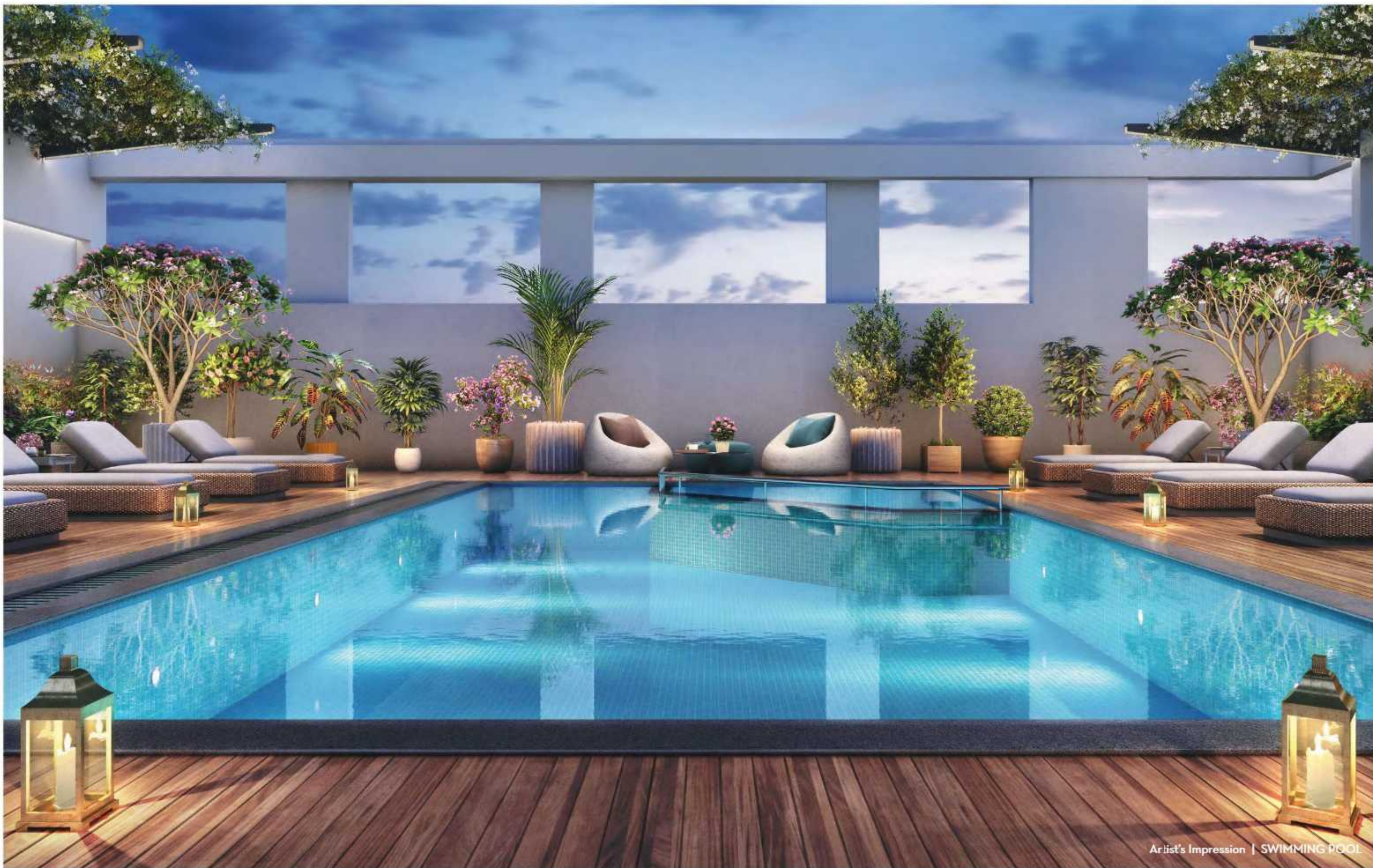
Artist's Impression | LIVING AND DINING | FLAT E



Artist's Impression | BEDROOM | FLAT E







# wings

## The Clubhouse

Above all, Wingfield spreads its Wings. The inspiring and energising communal space where great things happen organically. Think of it as your own Private Members Club. The ideal place to socialise whenever it feels right. A link made at the Fitness Centre, an idea sparked in the swimming pool, and a business proposal started on the jogging track. Your kid has more friends at the Play area than at their school. It's how things go here. Whenever you fancy a relaxing you-time, take the elevator to the top floor, and fly away without stepping out.



# Specification

## FLOORING

Living, Dining & Kitchen: High-end vitrified tiles

Bedrooms: High end vitrified tiles

Balcony & Bathrooms: Anti-skid tiles

## WALL FINISH

Exterior: Weather proof emulsion (Textured finish)

Interior: Premium / Royal emulsion

## CP FITTINGS & SANITARYWARE

Kohler / Jaquar or equivalent

Hand shower with mixer and shower cradle  
in master bathroom

Hand railing in master bathroom

Rain shower in master bathroom

Wall mounted closet in all bathrooms

WINDOWS: Aluminium

## DOORS

Main Door: Teakwood door frame with veneer  
door finish (Termite treated)

All Bedroom Doors: Hardcore flush door with  
veneer door finish  
(Termite treated)

Bathroom Doors: Anti-rotting door

Door Fittings & Locks: Dorma / Häfele

## NETWORKING

DTH & network plug-in socket provision  
in living / dining and all bedrooms

## ELECTRICAL

A/c provision in living, dining  
and all bedrooms with  
required cables / switches

3-phase with individual meters

Panasonic / Legrand or  
equivalent modular switches

Bedrooms: 2-way switches for light and  
fan in all bedrooms

SIEMENS or equivalent

ELCB tripper in each flat



## Common Features & Amenities

### CLUBHOUSE

Swimming pool  
Kids pool  
Kids play area  
Fitness centre  
Private theatre  
Indoor games  
Banquet hall  
Guest rooms

CCTV camera  
Association office  
Video security phone & intercom  
Access controlled doors  
Solar lighting as per norms  
Boom barrier with RFID access for car park entry  
Security office with visitors lobby

### LIFTS

Lifts with ARD & V-3F drive

### POWER BACKUP

1000 watts supply for each apartment  
100% power backup for common area / lifts / pumps

## Other Features

STP with dual plumbing as per norms  
Garbage management system  
Water points for car wash in parking area  
Common electric vehicle charging points in parking area. Individual charging point in allotted parking lot at additional cost

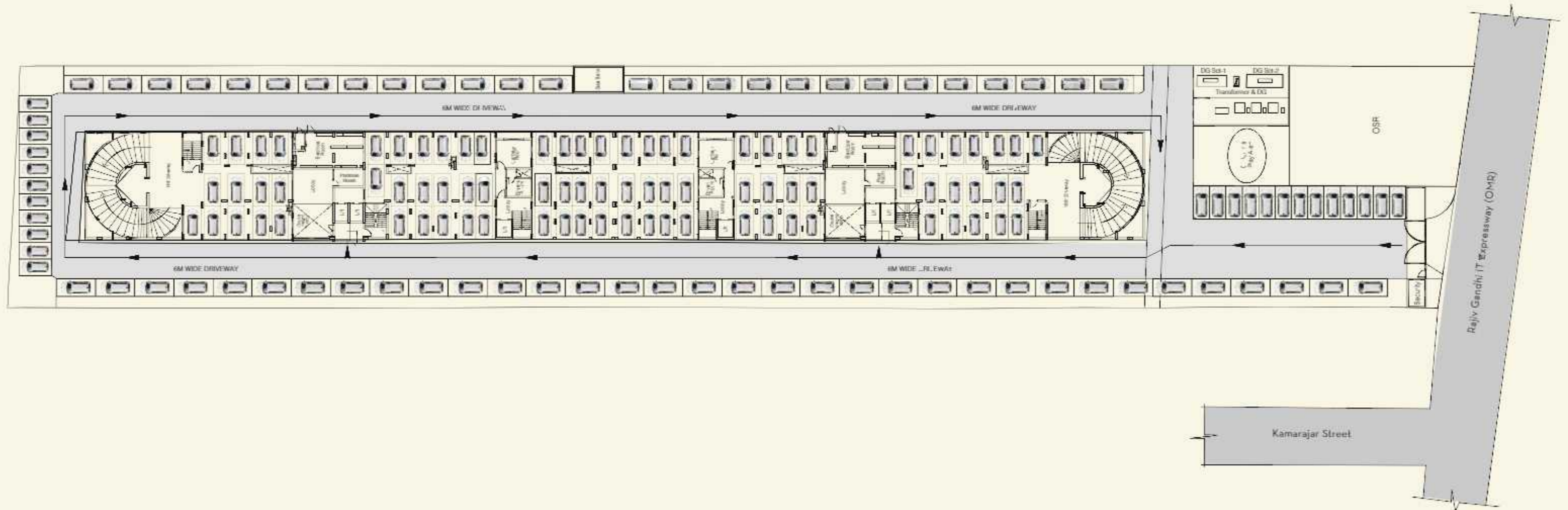
### PHNS

Rainwater harvesting  
Landscaped garden  
Water softening plant  
Toilets for drivers & domestic help  
Digital water meters for all apartments  
Drivers waiting room with fittings  
Reticulated gas  
Fire fighting sprinkler system  
Fire alarm & wet riser system  
Motion sensor lighting system in clubhouse & car parking area



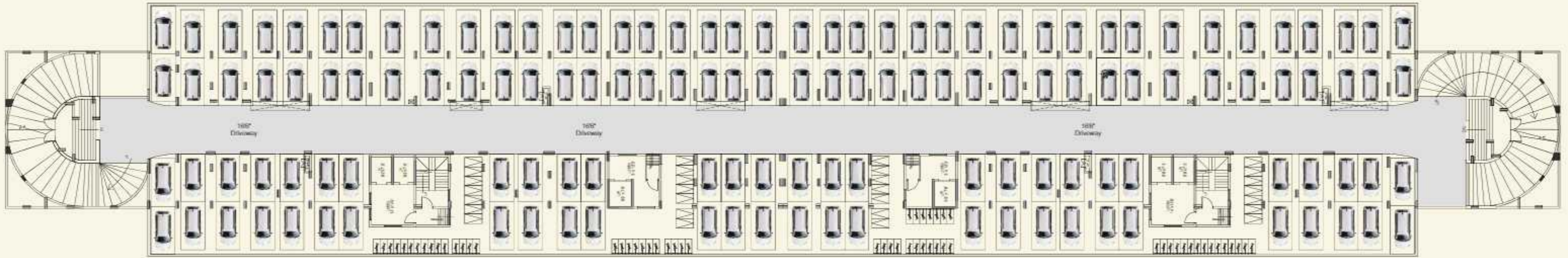


# Site / Stilt Floor



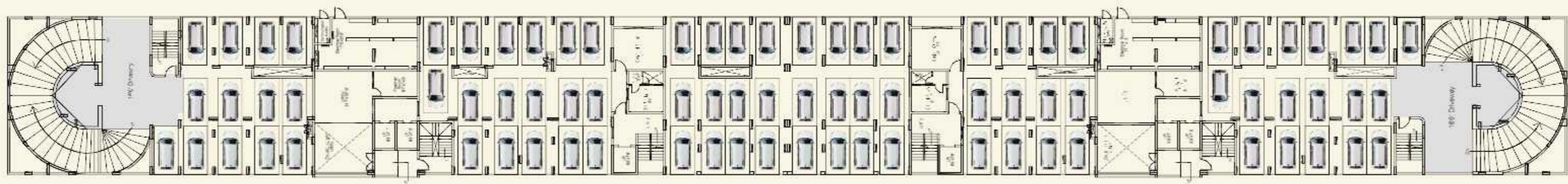


# Basement Floor





Stilt Floor





First Floor







# Second Floor West Wing



**Flat B (2273 sq.ft.)  
4 BHK**

**Flat C (1834 sq.ft.)  
3 BHK**

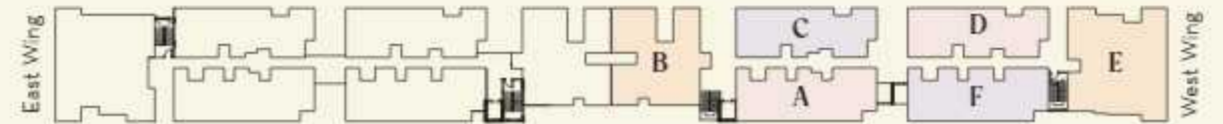
**Flat D (1850 sq.ft.)  
3 BHK**

**Flat E (2921 sq.ft.)  
4 BHK**



**Flat A (1988 sq.ft.)  
3 BHK**

**Flat F (2003 sq.ft.)  
3 BHK**





# Typical Floor

West Wing (3rd to 13th Floor)

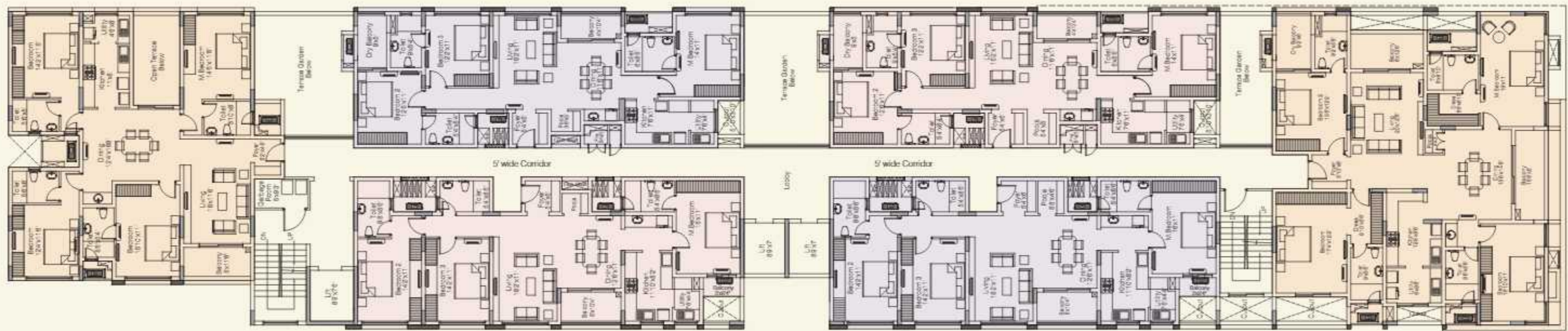


**Flat B (2273 sq.ft.)**  
4 BHK

**Flat C (1834 sq.ft.)**  
3 BHK

**Flat D (1850 sq.ft.)**  
3 BHK

**Flat E (2921 sq.ft.)**  
4 BHK



**Flat A (1988 sq.ft.)**  
3 BHK

**Flat F (2003 sq.ft.)**  
3 BHK





# 14th Floor West Wing



**Flat C (1834 sq.ft.)  
3 BHK**

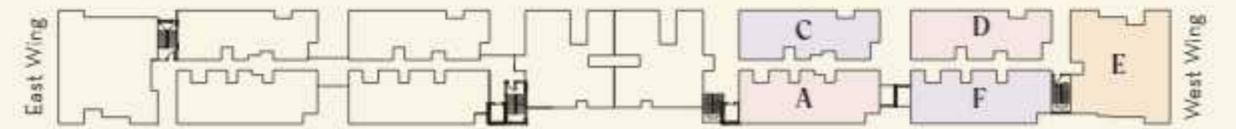
**Flat D (1850 sq.ft.)  
3 BHK**

**Flat E (2921 sq.ft.)  
4 BHK**



**Flat A (1988 sq.ft.)  
3 BHK**

**Flat F (2003 sq.ft.)  
3 BHK**







# Typical Floor

East Wing (3rd to 13th Floor)



**Flat H (2928 sq.ft.)**  
4 BHK

**Flat J (1834 sq.ft.)**  
3 BHK

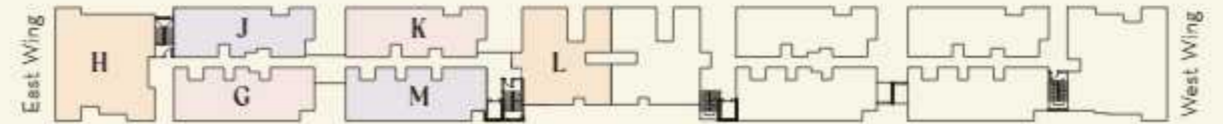
**Flat K (1850 sq.ft.)**  
3 BHK

**Flat L (2273 sq.ft.)**  
4 BHK



**Flat G (1988 sq.ft.)**  
3 BHK

**Flat M (2003 sq.ft.)**  
3 BHK

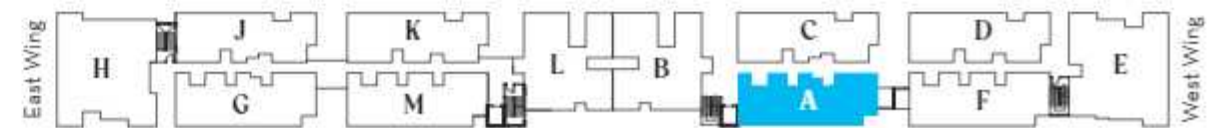






**Flat A (1988 sq.ft.)**  
**3 BHK**

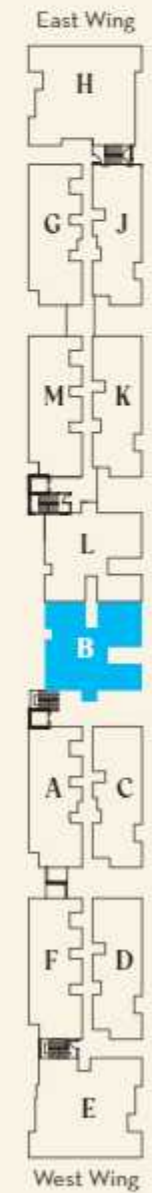
RERA carpet area 1303.99 sq.ft.  
Balcony area 10.61 sq.ft.  
Utility area 29.39 sq.ft.





**Flat B (2273 sq.ft.)**  
**4 BHK**

RERA carpet area 1519.18 sq.ft.  
Balcony area 57.91 sq.ft.  
Utility area 33.26 sq.ft.

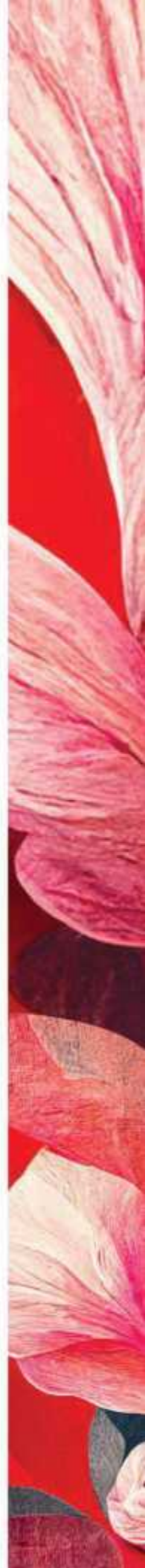
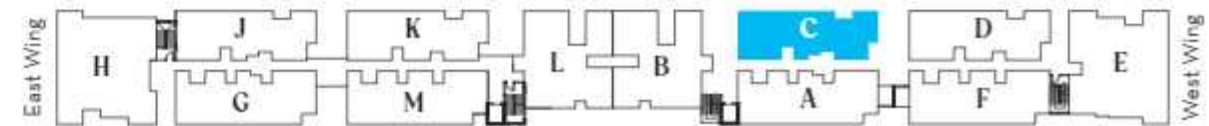
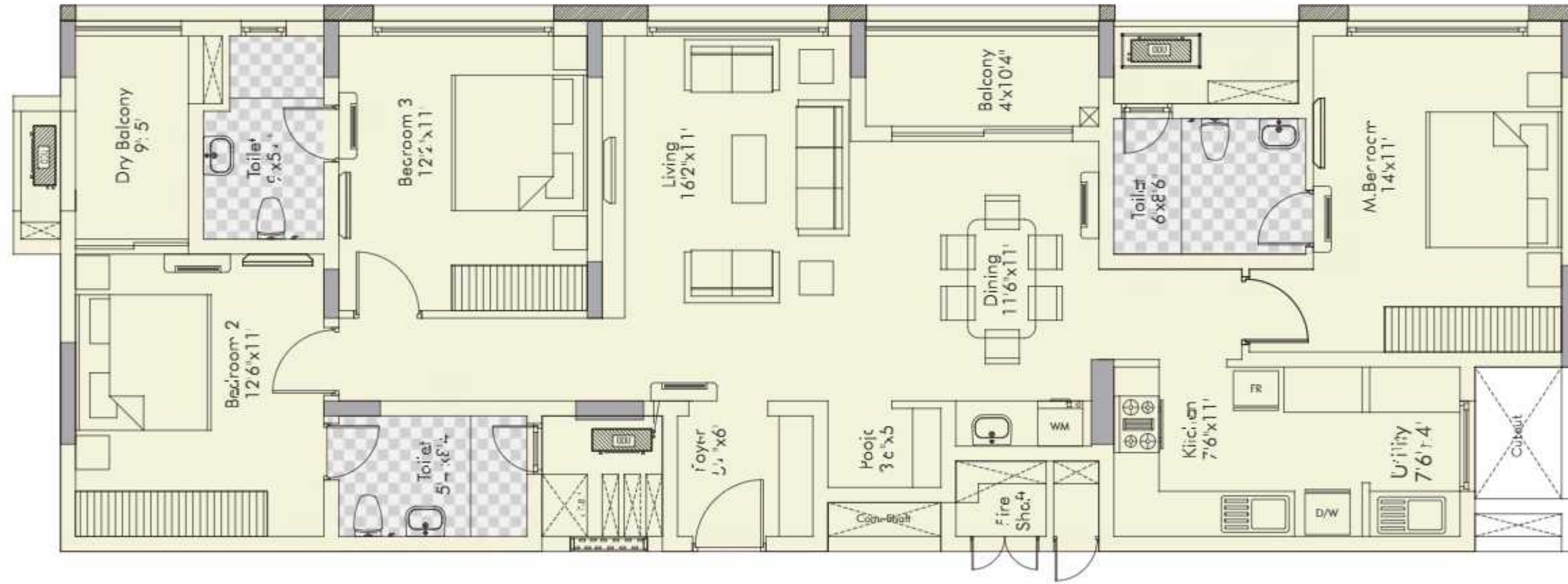






**Flat C (1834 sq.ft.)**  
**3 BHK**

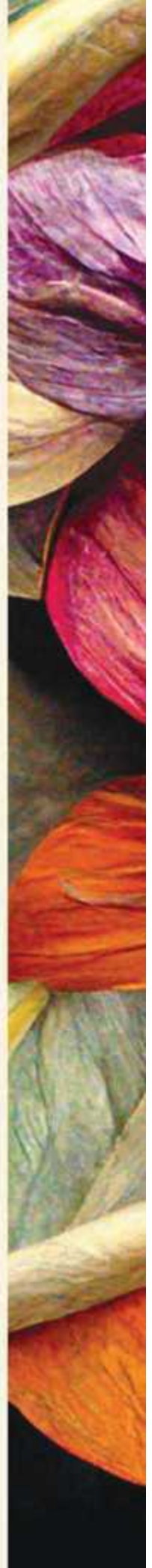
RERA carpet area 1171.02 sq.ft.  
Balcony area 86.22 sq.ft.  
Utility area 30.03 sq.ft.





**Flat D (1850 sq.ft.)  
3 BHK**

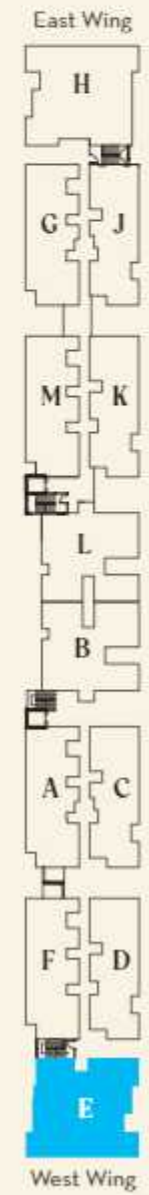
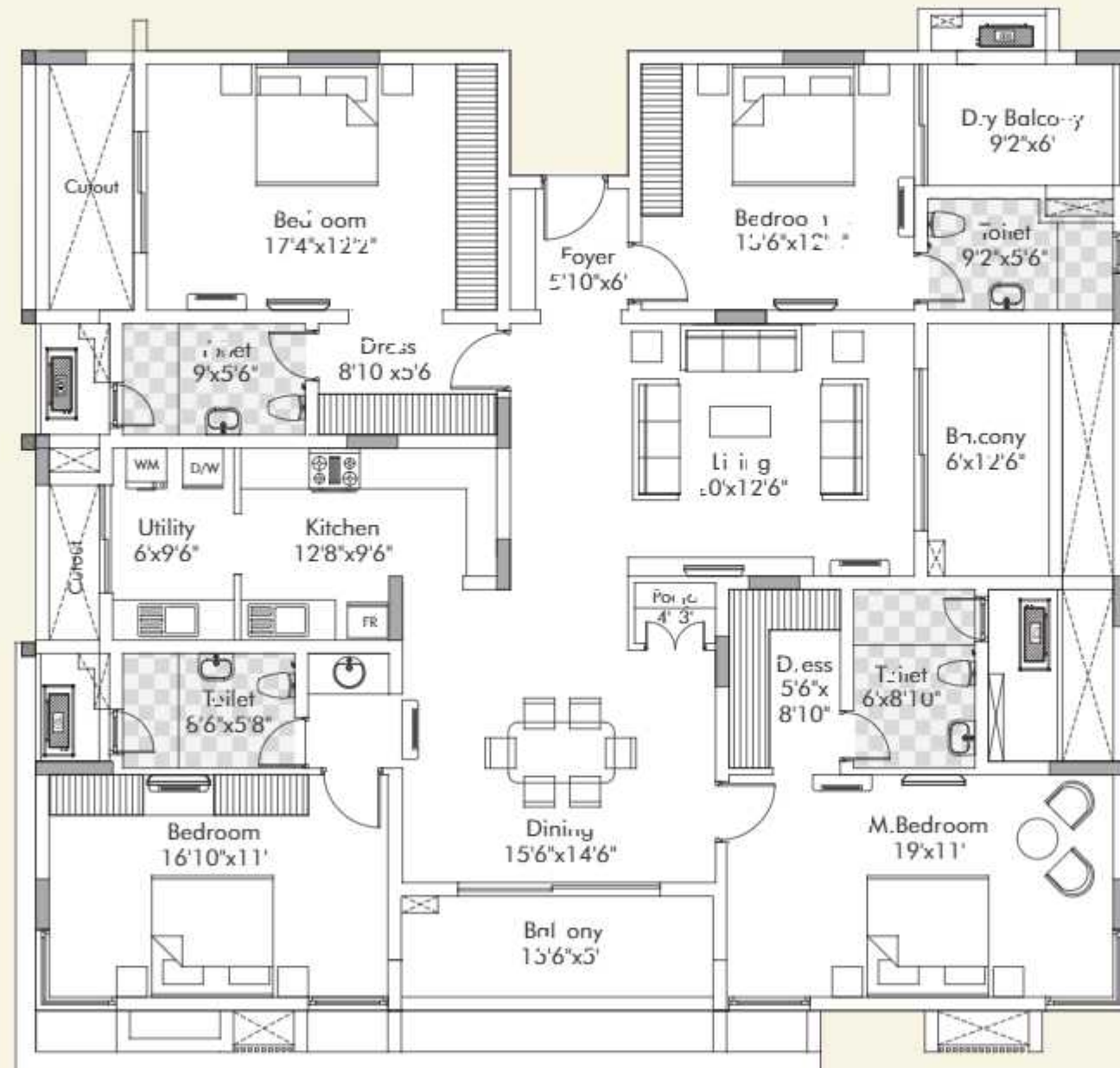
RERA carpet area 1183.30 sq.ft.  
Balcony area 86.33 sq.ft.  
Utility area 30.03 sq.ft.





**Flat E (2921 sq.ft.)**  
**4 BHK**

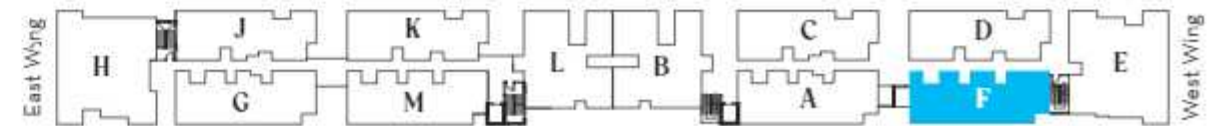
RERA carpet area 1835.66 sq.ft.  
Balcony area 207.50 sq.ft.  
Utility area 57.05 sq.ft.





**Flat F (2003 sq.ft.)**  
**3 BHK**

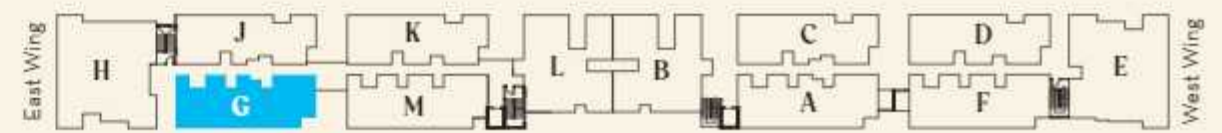
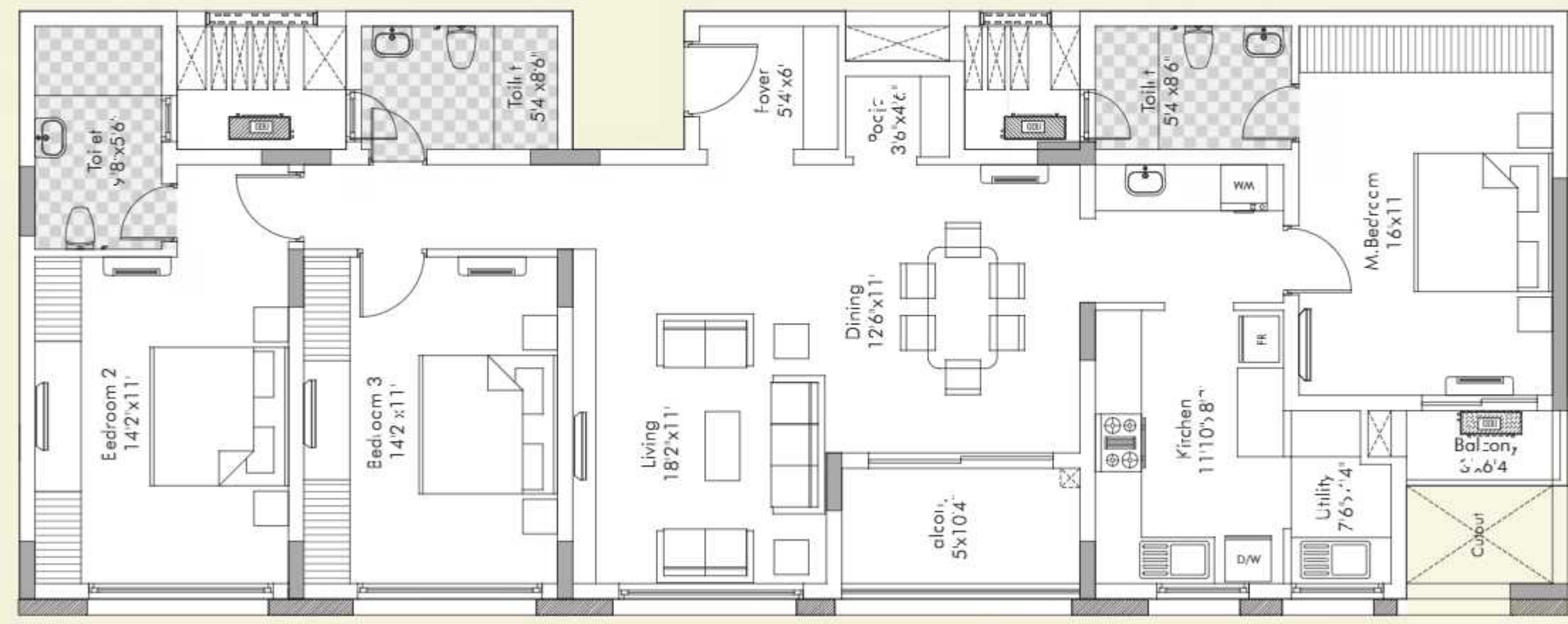
RERA carpet area 1314.44 sq.ft.  
Balcony area 70.61 sq.ft.  
Utility area 29.39 sq.ft.





# Flat G (1988 sq.ft.) 3 BHK

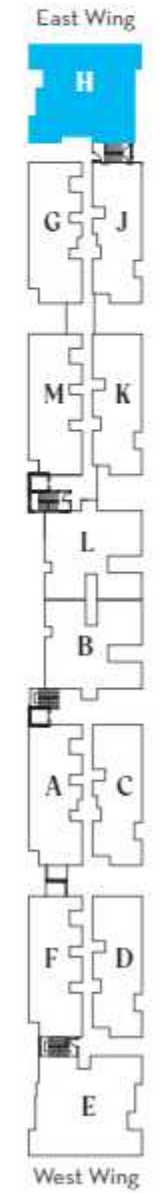
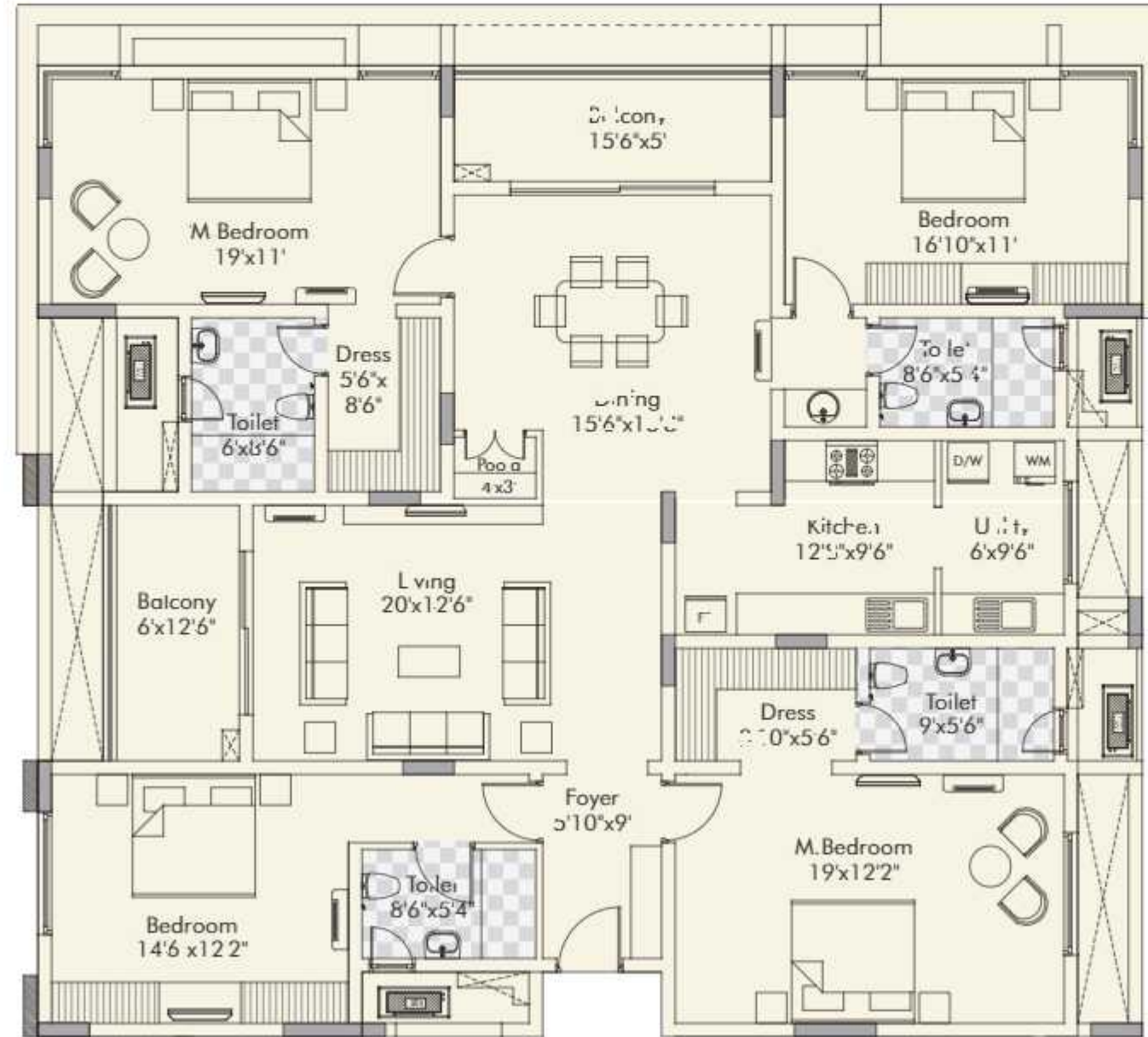
RERA carpet area 1303.93 sq.ft.  
Balcony area 70.61 sq.ft.  
Utility area 29.39 sq ft





**Flat H (2928 sq.ft.)**  
**4 BHK**

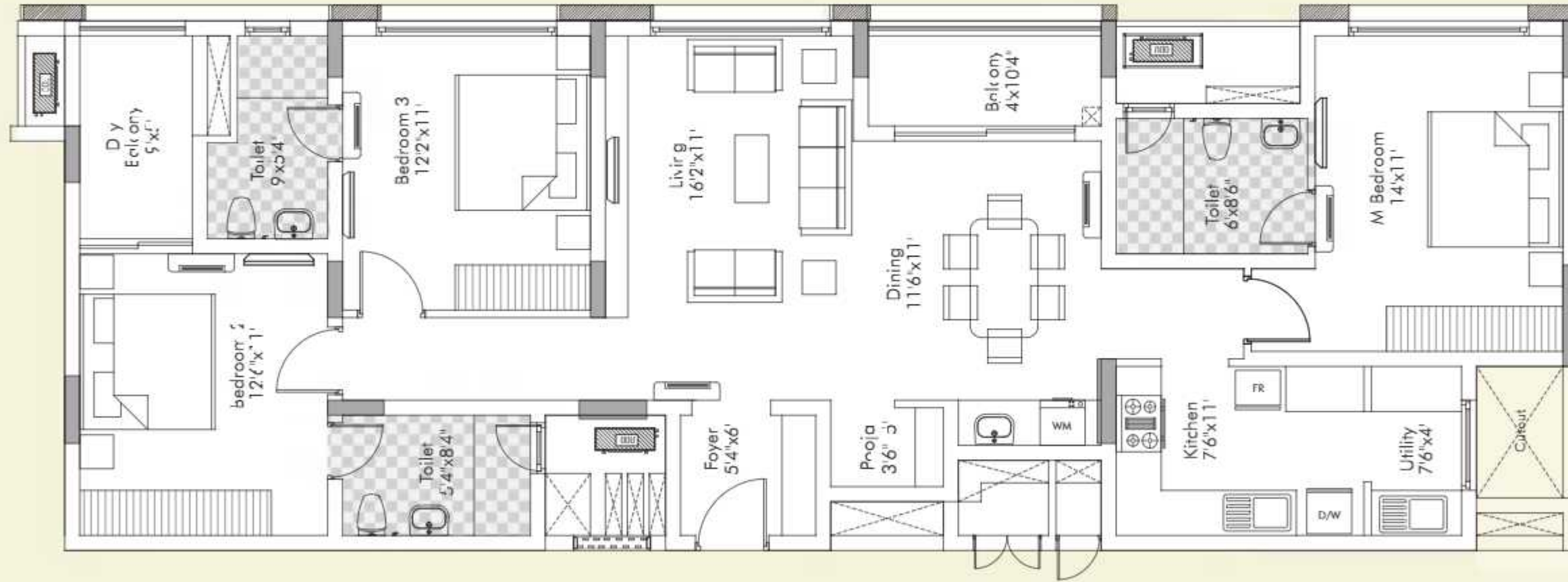
RERA carpet area 1920.03 sq.ft.  
Balcony area 152.53 sq.ft.  
Utility area 57.05 sq.ft.





**Flat J (1834 sq.ft.)**  
**3 BHK**

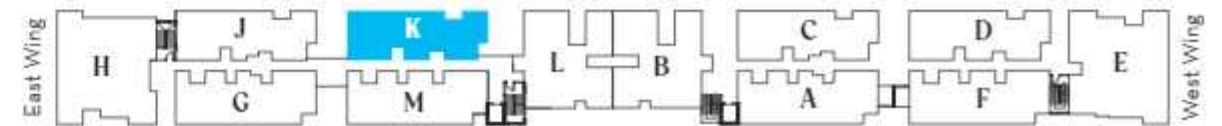
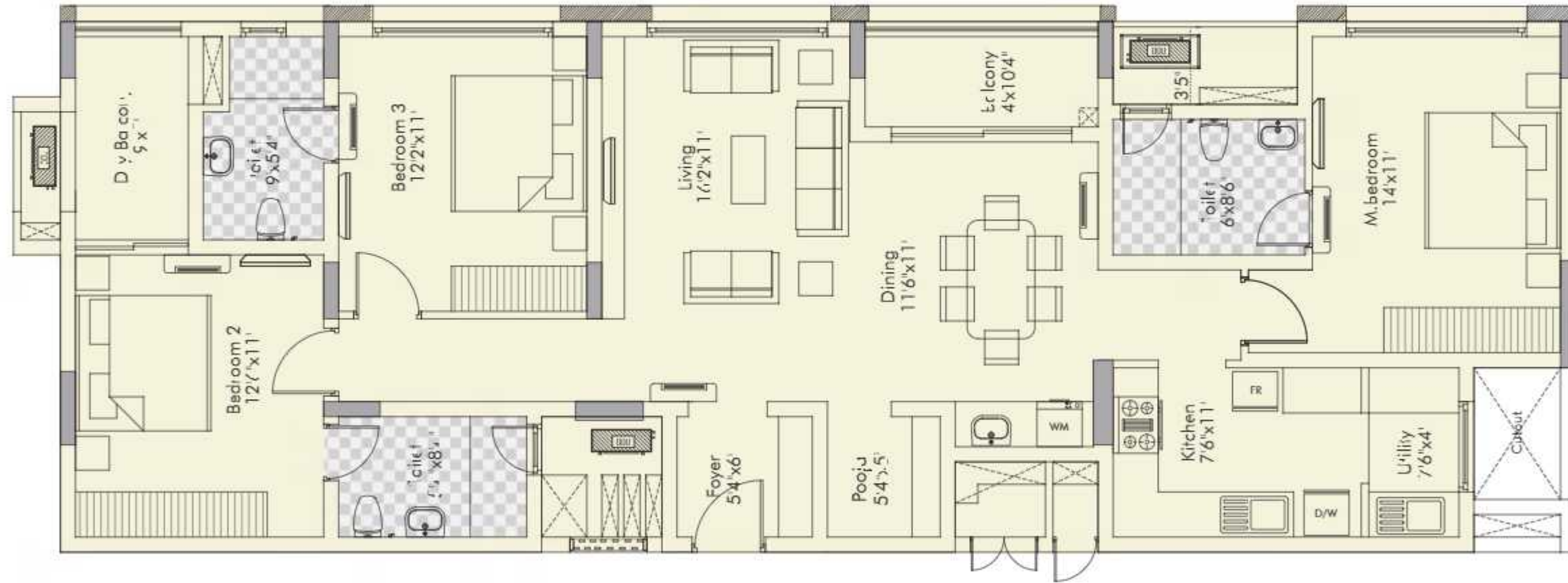
RERA carpet area 1167.70 sq.ft.  
Balcony area 86.33 sq.ft.  
Utility area 30.03 sq.ft.





**Flat K (1850 sq.ft.)**  
**3 BHK**

RERA carpet area 1186.19 sq.ft.  
Balcony area 86.33 sq.ft.  
Utility area 30.03 sq.ft.

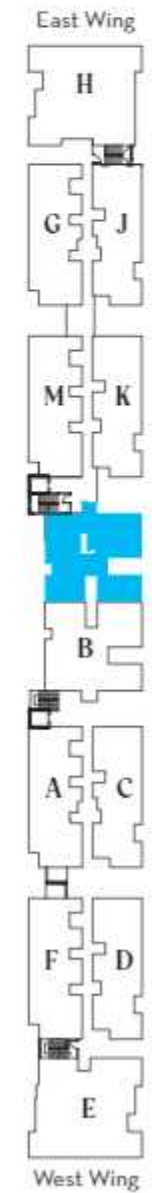
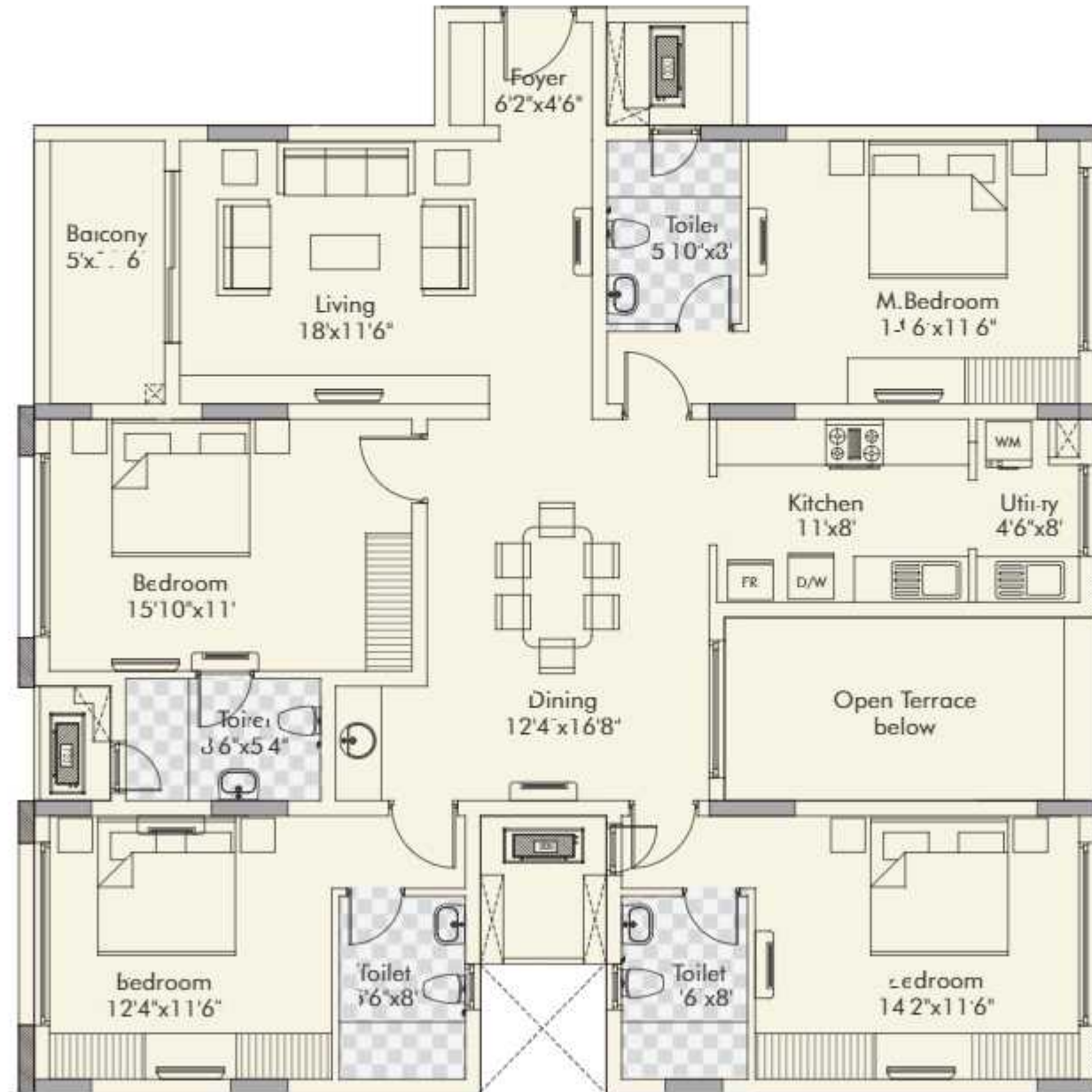






**Flat L (2273 sq.ft.)**  
**4 BHK**

RERA carpet area 1518.89 sq.ft.  
Balcony area 57.91 sq.ft.  
Utility area 35.95 sq.ft.





**Flat M (2003 sq.ft.)**  
**3 BHK**

RERA carpet area 1315.11 sq.ft.  
Balcony area 70.61 sq.ft.  
Utility area 29.39 sq.ft.

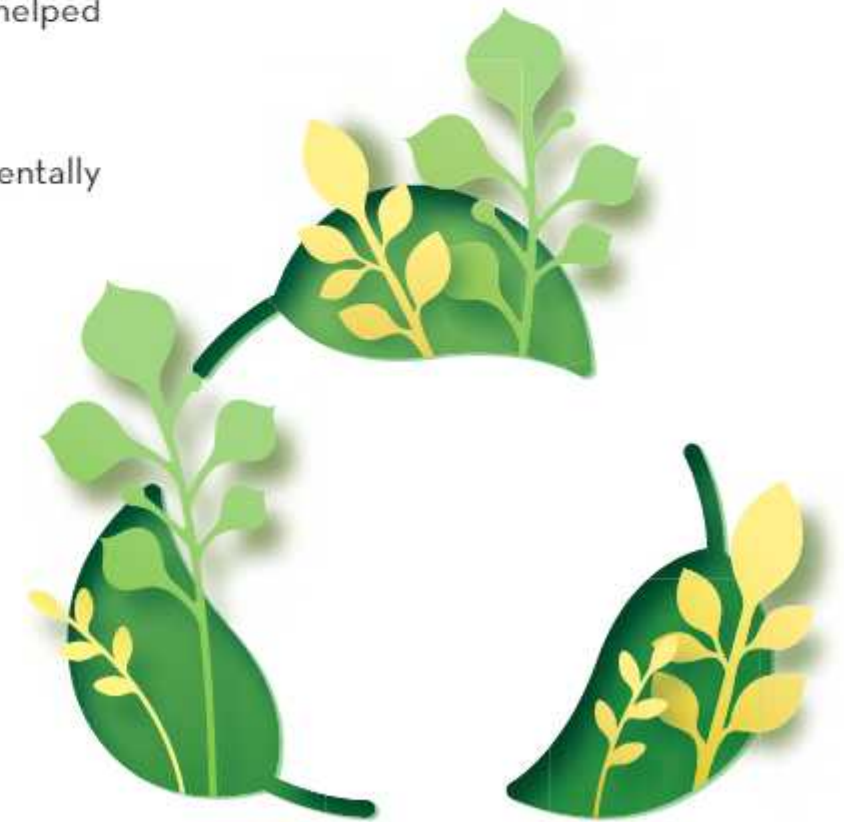


## ENVIRONMENT- SENSIBLE BUILDING

Wingfield is built with a host of sensible features that makes it a sustainable living space. Water, power and waste management are deeply embedded in the building.

For instance, the water you use daily is treated and reused for gardening. There are also several wells within the premise to harvest the rain water. And the lighting in the car park is motion sensor controlled, preventing unwanted usage. We have taken sustainable measures in our construction process as well. Replacing traditional clay bricks with AAC block for partition walls and cement plastering with Gypsum plastering has helped conserve water significantly.

With every project we are constantly taking one step forward in building environmentally sensible living spaces.



## ABOUT APPASWAMY

Wingfield has been brought to you by Appaswamy Real Estates, the most trusted developer in Chennai, for over six decades. Founded in 1959 the company, with a rapidly expanding loyal customer base of over 10,000 happy families, personifies trust, transparency, quality, and commitment.

The company's foray into hospitality with the Residency Group of hotels established new standards for business hotels in South India. In 2016, the hospitality division made its debut in the Maldives with an uber luxury resort boasting avant-garde designs managed by Marriott Hotels under the prestigious St. Regis brand.



# On OMR. Near ADYAR.



KERA No TN/29/Building/0013/2023 dated 4 01.2023

Office: 4, Rajiv Gandhi Salai (OMR), K. Sivakkam, Chennai 600 096

The information contained herein is subject to change and cannot form part of an offer or contract. While reasonable care has been taken in providing this information, the Developer and their appointed Marketing Agents cannot be held responsible for any inaccuracies or changes and any loss or damage (whether direct, special or consequential) arising herefrom. This diagram is used for creative representation only. The interior design, selections and the furnishings shown here are not part of this standard offering.



Artist's Impression



Corporate Office: 3, Mangesh Street, T. Nagar, Chennai 600 017.

P +91 44 2434 6333 | M + 91 76673 0000

E [info@appaswamy.com](mailto:info@appaswamy.com) | [www.v.appaswamy.com](http://www.v.appaswamy.com) | Follow us on 