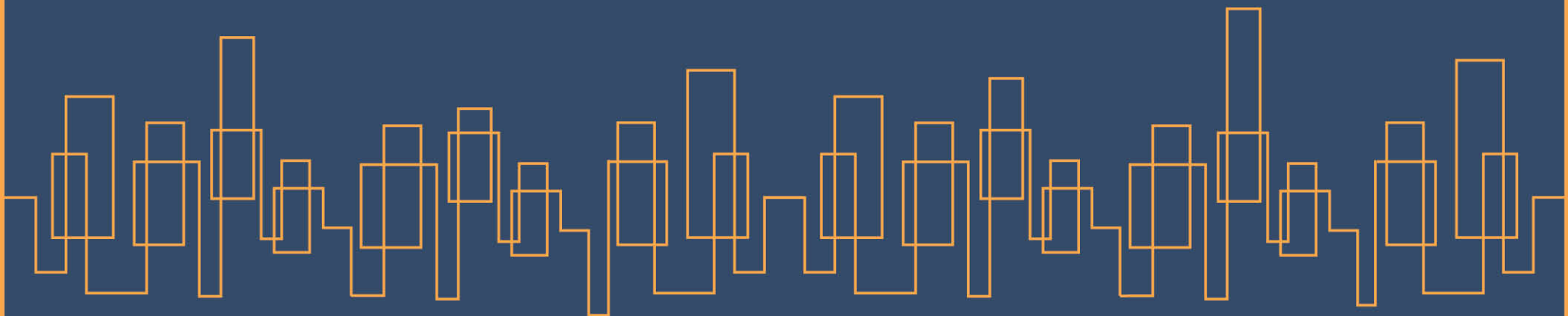




1, 2 & 2.5 BHK COMFORT HOMES  
HANDEWADI ROAD, HADAPSAR





Conceptual Image

## THINK BIG LIVE *Simplicity!*

**18 Buildings Delivered | 400+ Happy Families Residing**

**Jhala Group** has delivered 18 buildings in their flagship project **Simplicity**, the first phase of which was launched in 2012. A strong gated community, **Simplicity** is ready to welcome the latest building in this series with the launch of the 4<sup>th</sup> phase. Enjoy a hearty welcome from the community of 400+ happy families residing in the premises. Live a life of elegance and comfort, where you can bond with your neighbours and experience the joys of life.





## *Simple* PLEASURES, SMART LIVING!

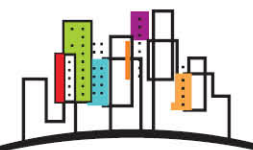
**Simplicity** is home to classic and peaceful living. The efficiently planned 1, 2 and 2.5 BHK apartments have all the features of a comfortable home. Nestled in the well-established location of Handewadi, on the Hadapsar-Handewadi Road, which is now within PMC limits, **Simplicity** makes for a wise choice, without the need to stretch your budget.

The homes here are thoughtfully designed with your convenience in mind. With well-ventilated kitchens, family-sized living rooms and comfortable bedrooms, **Simplicity** promises a seamless lifestyle. Enjoy quality living and high thinking here!





Artistic Impression



*Simpli-City*  
A WING



# THE *Simple* JOYS OF LIFE!

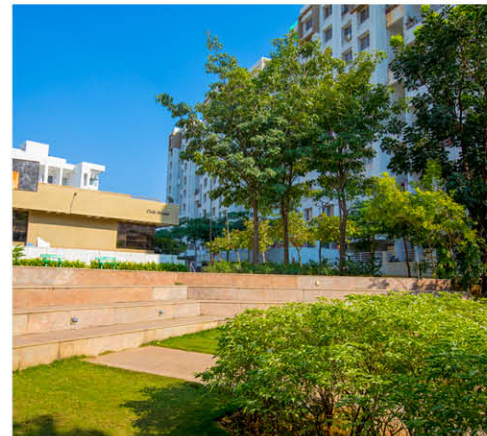
BASKETBALL COURT



CHILDREN'S PLAY AREA



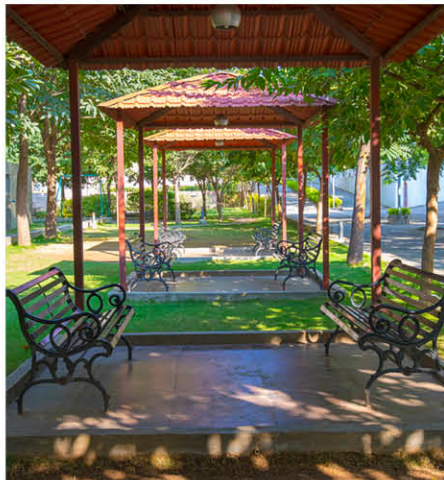
LANDSCAPED GARDEN



CONVENIENCE SHOPPING  
IN CAMPUS



GYMNASIUM



SENIOR CITIZEN'S AREA



CLUB HOUSE

## READY-TO-USE AMENITIES

**Simplicity** boasts of all the essential amenities just for you. Planned with all the necessary and special amenities, **Simplicity** guarantees a life lived to the fullest.

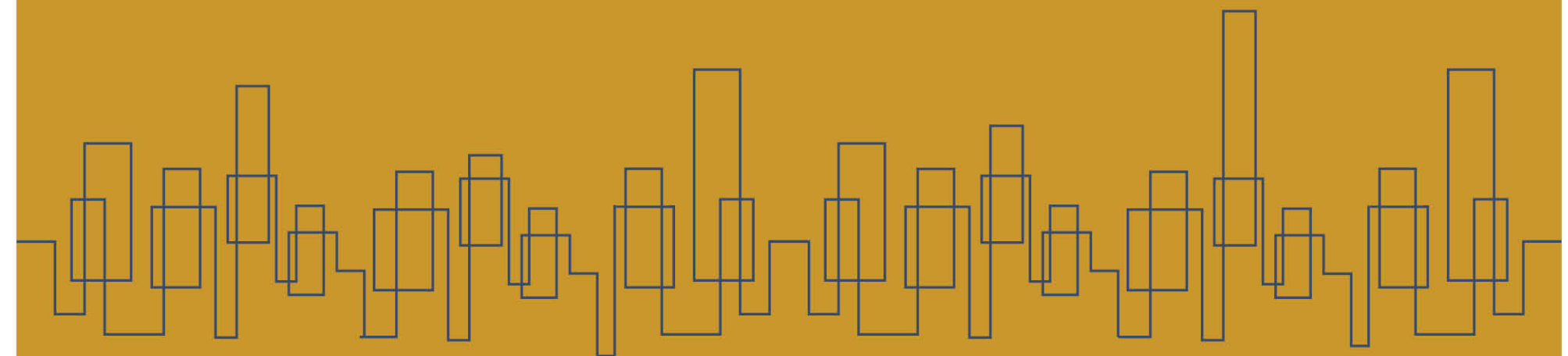
- Convenience shopping within the campus
- Developed/Landscaped gardens
- Club House
- Generator back-up for lifts & common areas
- Compound wall for the entire project
- Internal roads within the project in either Tremix Concrete/Paving Blocks/Asphalt
- Street lights on internal roads
- STP Plant
- RO Plant for drinking water



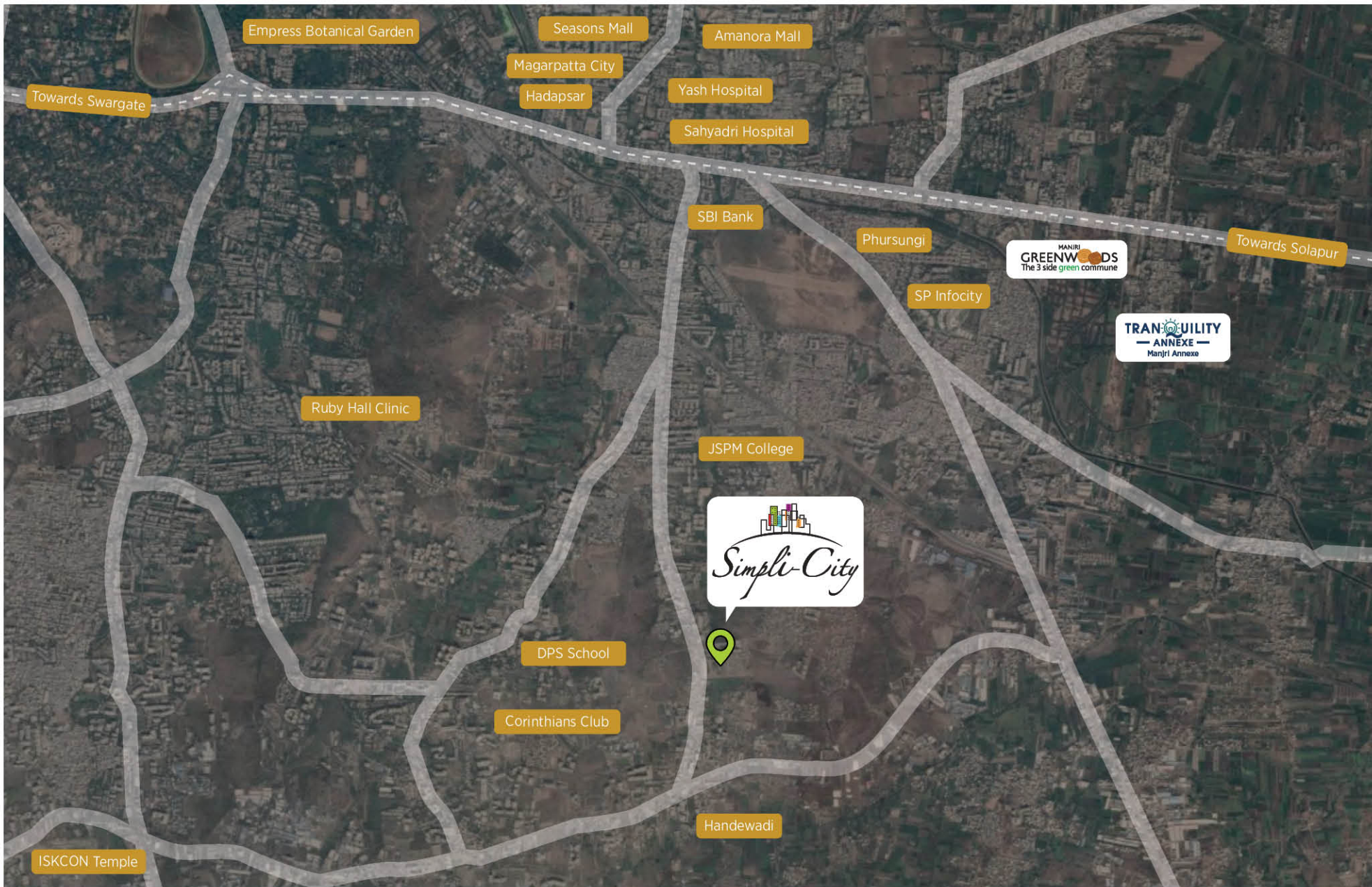


## SPECIFICATIONS

- RCC framed structure
- AAC Blocks for external/internal walls of required thickness
- External Sand Faced plaster/Internal Gypsum plaster
- Concealed plumbing with good quality pipes of standard make
- Plumbing provision for Water Purifier in the kitchen
- Good quality C.P. fittings in bathrooms
- Door frames: Wooden for main doors and bedroom doors, GI for toilet doors
- Laminated main entrance doors
- Internal doors: Wooden flush doors
- Powder coated Aluminum sliding windows with mosquito net and M.S. safety grills
- Vitrified flooring tiles with skirting in entire unit, size 600mmX600mm
- Dado tiles up to 7' 0" height in toilets
- Single Granite platform with SS sink for 1 bedroom flats and "L" shaped Granite kitchen platform with S.S. sink for 2 & 2.5 bedroom flats
- Provision for exhaust fan in kitchens and toilets
- Provision for telephone in living rooms and TV point in living rooms and master bedrooms
- Electrical works: Concealed FRP sheathed multi-strand Copper wires (ISI marked), modular switches
- Provision for fixing an inverter in each flat
- MCBs & ELCBs of good quality
- Good quality cylindrical locks for all doors and night latch on main doors
- Provision for fitting AC in master bedrooms
- Electric Meter: As per norms of MSEDCL
- Paving blocks/Checkered tiles in parking
- Paint: Emulsion for internal walls, superior grade acrylic emulsion for external walls
- Two passenger lifts and one stretcher lift in the building, of standard make
- Provision for solar hot water in master bedroom toilets of each flat [100 litres per day]
- Generator backup for lifts and common areas

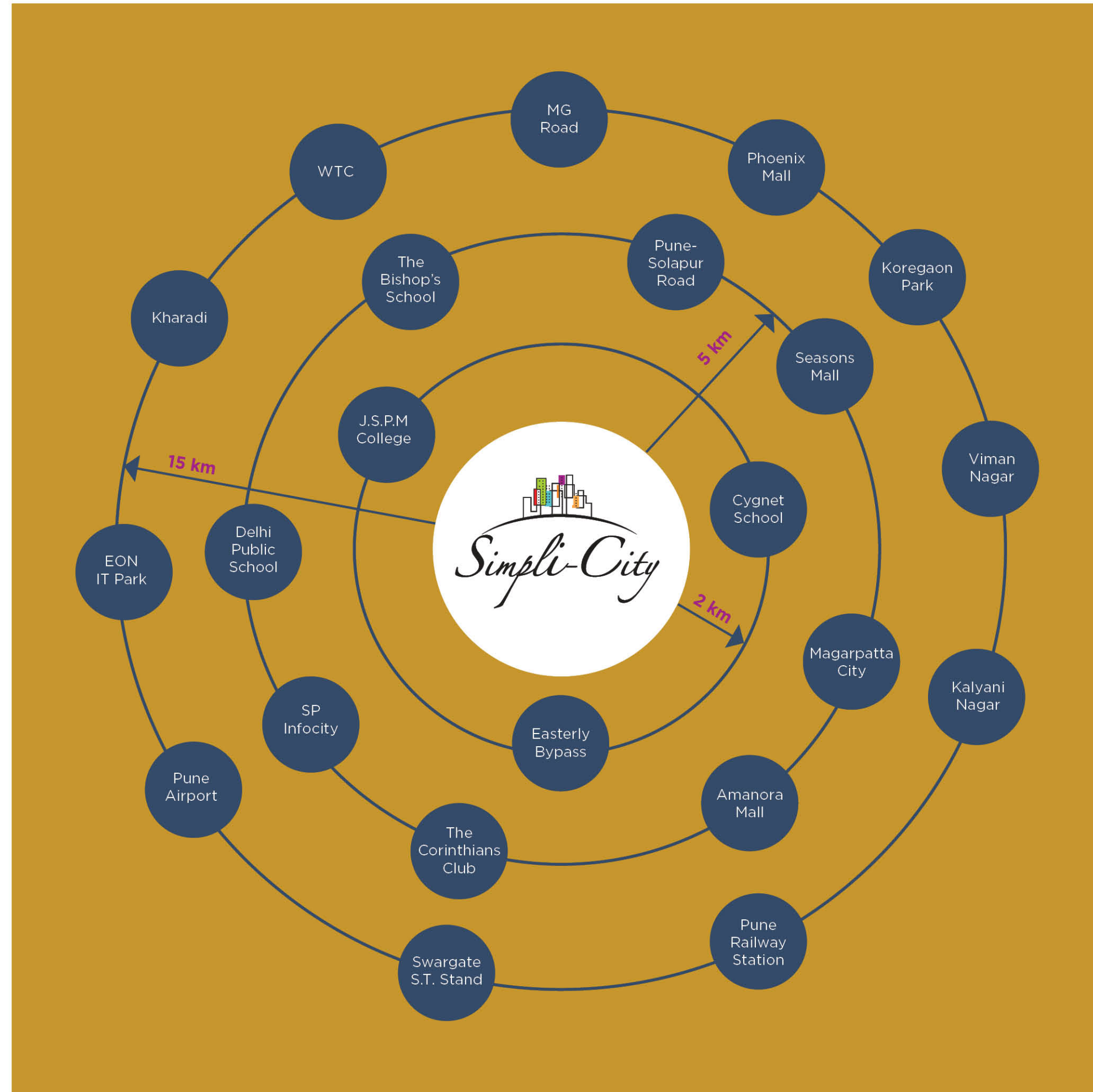






## *Simply* THE BEST PLACE TO BE!

Handewadi is a fast developing residential area. In close proximity to Pune-Solapur Road, Kondhwa, NIBM and Undri, it is well connected to different parts of the city. The developed infrastructure and civic amenities of Handewadi promise hassle-free living. Located in Handewadi, **Simplicity** enjoys quick access to the renowned Magarpatta City & Phursungi Information Technology Hubs. Simply put, **Simplicity** is the right project in which to buy your home, within your budget.







**JHALA**  
GROUP

*Simply* TRUST

Building landmarks across the city, **Jhala Group** has been setting benchmarks for decades. With a legacy of more than **52 years**, we strive to make each creation a notch above the last one.

We hold transparency, commitment and customer satisfaction at the core of our business. We move forward with innovation and state-of-the-art construction practices while staying rooted to a foundation built on trust.

## LEGACY


**52**  
YEARS  
EXPERIENCE

**8000+**  
HAPPY  
CUSTOMERS

**40+**  
PROJECTS  
COMPLETED


## ONGOING PROJECTS

Mahalunge  
**Riviera**  
Best Living Lifestyle  
Near Baner-Hinjewadi Phase 1 Bridge




Actual Photo

MANJRI  
**GREENWOODS**  
The 3 side green commune  
Pune-Solapur Road, Manjri



Actual Photo

**TRANQUILITY**  
— ANNEXE —  
Manjri Annexe, Pune-Solapur Road



Artistic Impression



TYPICAL 2.5 BHK



TYPICAL 2 BHK





TYPICAL 1 BHK



HANDED OVER WITH *Simplicity!*





Project by:



**JHALA**  
GROUP

Promoters: **J.K.P. Developers, Unit 2**  
J.V. Partners: **Maloji Bhosale and Family**

**SITE ADDRESS:**

Simplicity Phase 4, A Wing, Plot Bearing / CTS / Survey / Final Plot No.: S No. 10-11  
Plot No. 1 at Ouatade Handewadi, Haveli, Pune - 412308

**Call: +91 70580 28264 | [simplicity.pune@gmail.com](mailto:simplicity.pune@gmail.com)**

**Call: +020-25587000/1 | [jhalamktg@gmail.com](mailto:jhalamktg@gmail.com)**

**[www.jhalagroup.com](http://www.jhalagroup.com)**



MAHARERA NO.: P52100028340 | <https://maharera.mahaonline.gov.in>

**Disclaimer** - This brochure is purely conceptual and not a legal offering. The pictures/images/elevations are for representational purposes only and are subject to change.