

emami * **BUSINESS**
B.B.Y

The Business Address Of Kolkata

Salt Lake, Sector V, Kolkata

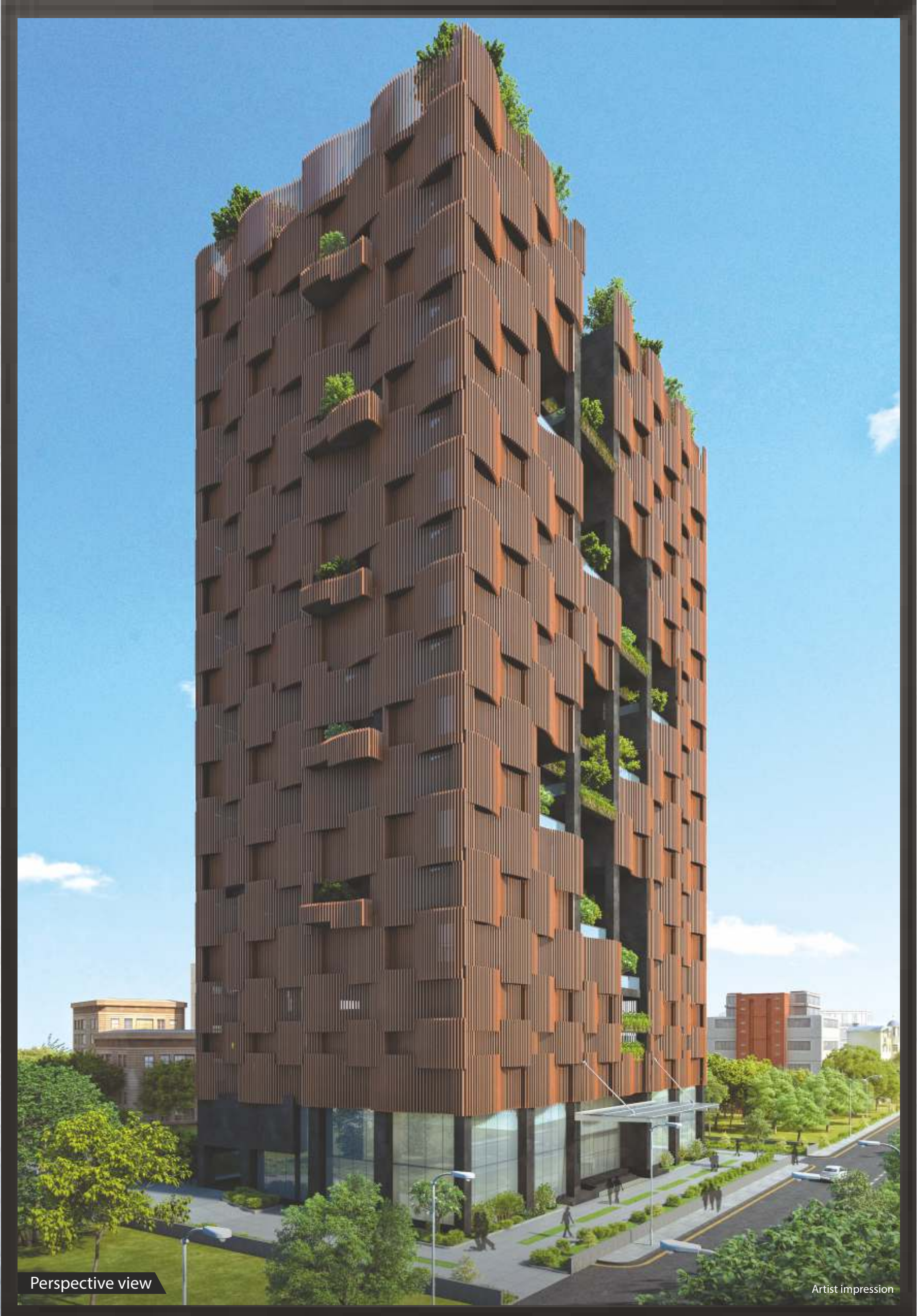
Location Map



Location Proximity

Location	Distance (approx.)
Webel Crossing	400 m
Ring Road	1.1 km
Metro	0.75 km
Airport	15 km
Bengal Intelligent Park	182 m
AMRI Hospital	5.5 km
Nicco Park	1.6 km
Swasthya Bhavan	1.3 km
ICICI Bank	280 m
Infinity Business Centre	295 m
RDB Cinemas	460 m
Chingrihata Crossing	4.2 km
Science City Crossing	5.8 km

Areas are approx. (Source: Google Map)



The Business Address Of Kolkata



Way to entrance porch

Artist impression



Business Lobby - Finesse and posh

Artist impression



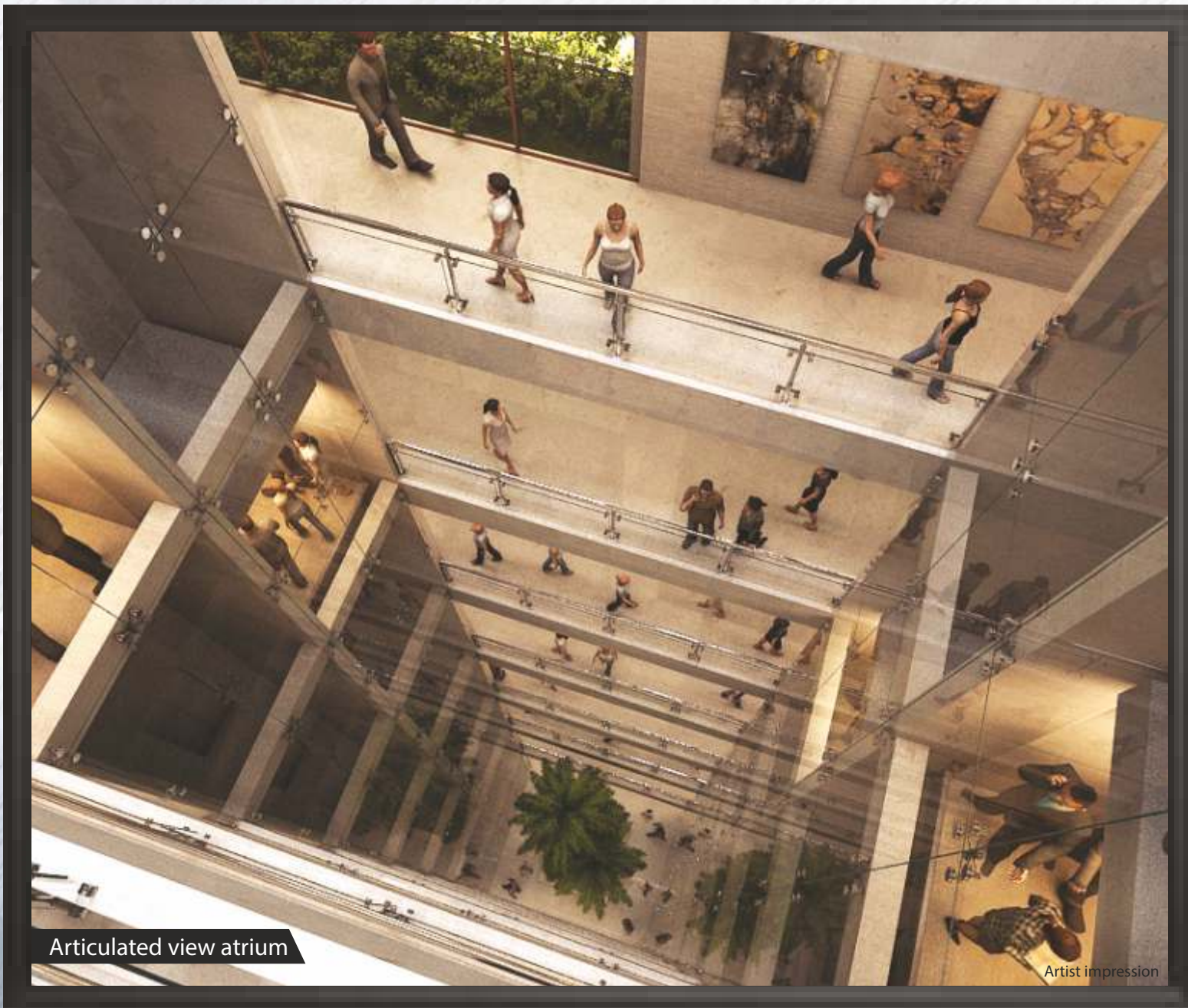
Offices amongst Landscaped Terrace

Artist impression



Business Corridors

Artist impression



emami * **BUSINESS**
B.I.I.Y *The Business Address Of Kolkata*

• **FROM THE HOUSE OF EMAMI** •

One of the most trusted conglomerate business house of India

• **DESIGNED BY THE BEST** •

SPA - Sanjay Puri Architects is one of the best leading architectural firm of India. The firm has won over 225 awards including 150 international awards and 80 national awards

• **LOCATED** •

Located right in the heart of Sector V, the IT Business District of Kolkata

• **OVERVIEW** •

Boasts of a towering structure with 15 floors of modular office spaces to suit small office requirements along with scalable options. Built over 1 acre land, the Building with 5 levels of parking in the 3 podiums and 2 basements and retail area in the Ground and Mezzanine floors, creates the unique combination of Office space complemented with retail zones to cater to the occupants and the vicinity. The Terrace has been designed to provide the required break from rigorous office work, in the form of Open air Gym, Jogging track, Soccer and Cricket Turfs, Café with seating area and beautifully landscaped seating areas along with water features to give one the feeling of being close to nature.

• **CONSTRUCTION** •

Emami Realty is committed to excellence in design and construction, by partnering with internationally acclaimed names like Moshe Safdie, L&T, Meinhardt Singapore, SRSS Singapore, Green Architects Thailand, Kapadia Associates, MODARCH etc.

- *Built over 1 acre land*
- *Located right in the heart of Sector V, the IT Business District of Kolkata,*
- *2 Basements + 3 Podiums + Ground Floor + Mezzanine Floor + 15 office floors*
- *180 Office units, 6 Retail units, 2 Restaurants, 2 Conferences, 1 Coffee Shop and 205 Parkings*
- *Premium Office address, strategically located in the heart of Sector V*
- *Best in class Small offices with provision for built in toilets for convenience*
- *Scalable options to suit larger requirements*
- *Both retail/commercial space options to cater to investor requirements*
- *Modern architectural elevation*
- *Optimised common area*
- *Grand entrance and Double height lobby*
- *Office overlooking onto green terrace below*
- *Adequate car parking options*
- *Built as per NBC norms*
- *100% power back up and seamless connectivity*
- *Exclusive terrace with most offices*
- *Terrace with Cricket Turf, Soccer Turf, Open Gym, Jogging Track, Café with seating area and beautifully landscaped seating areas along with Water Features to give one the feeling of being close to nature.*



Basement 2



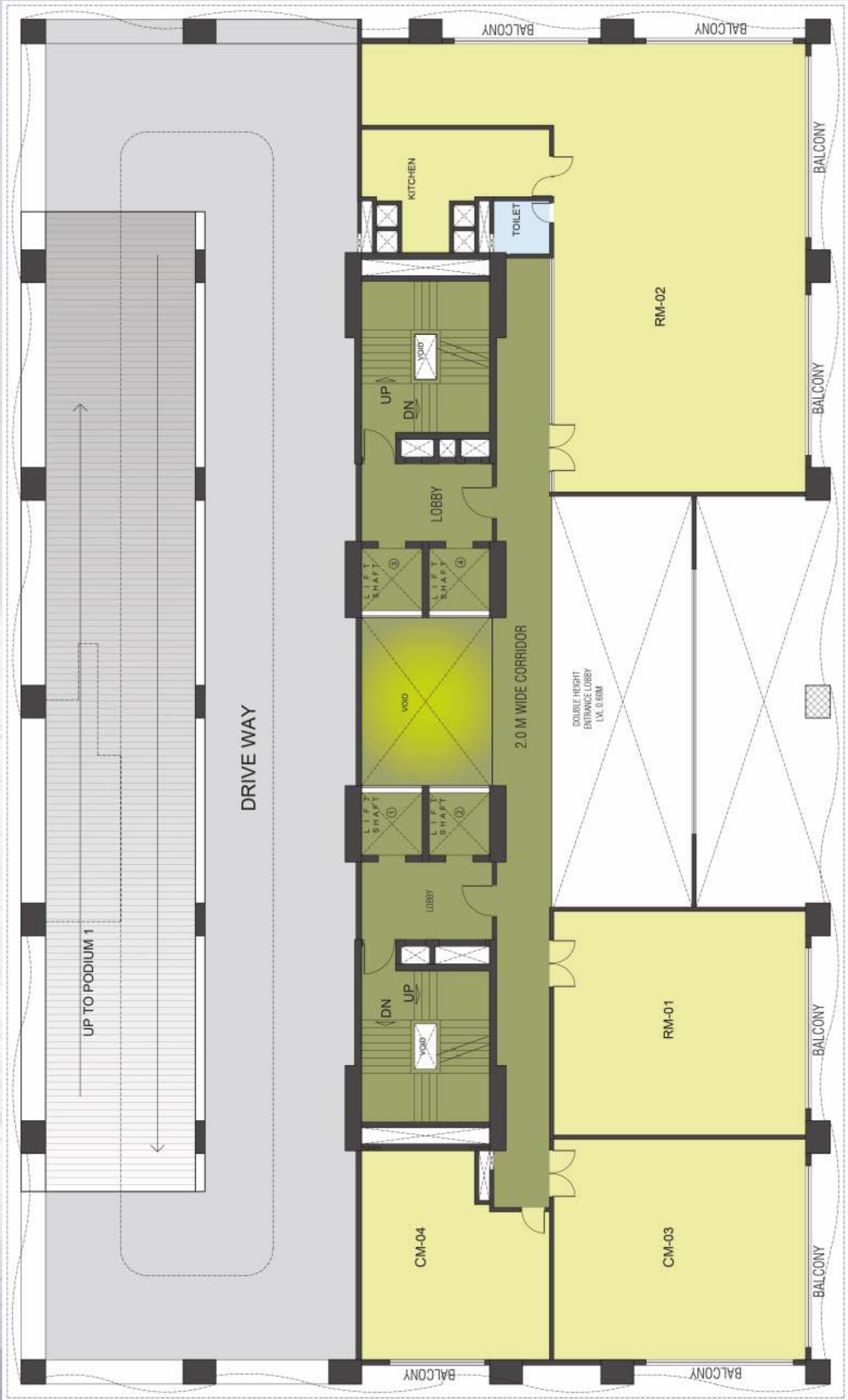
Basement 1



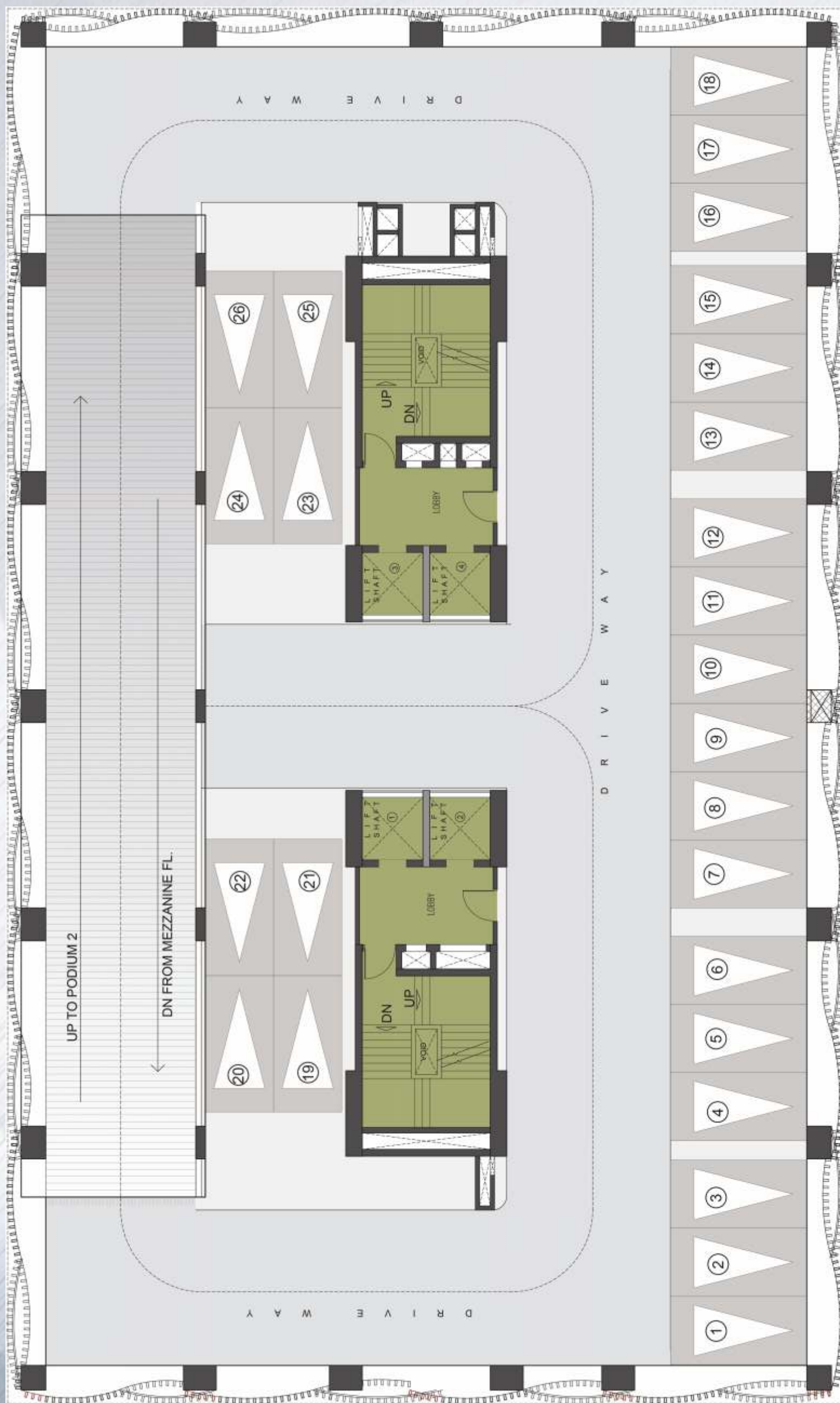
Stilt Floor



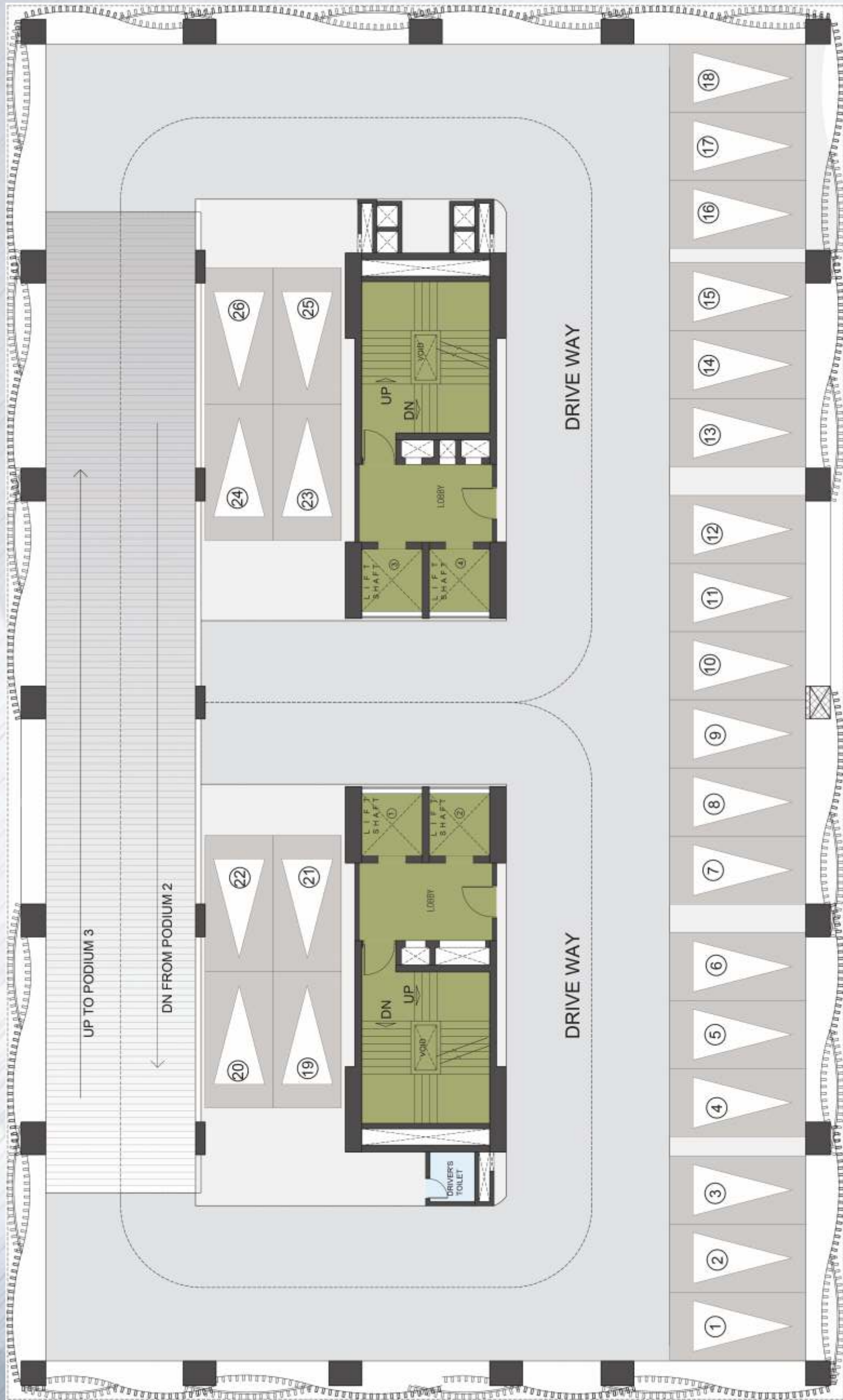
Mezzanine Floor



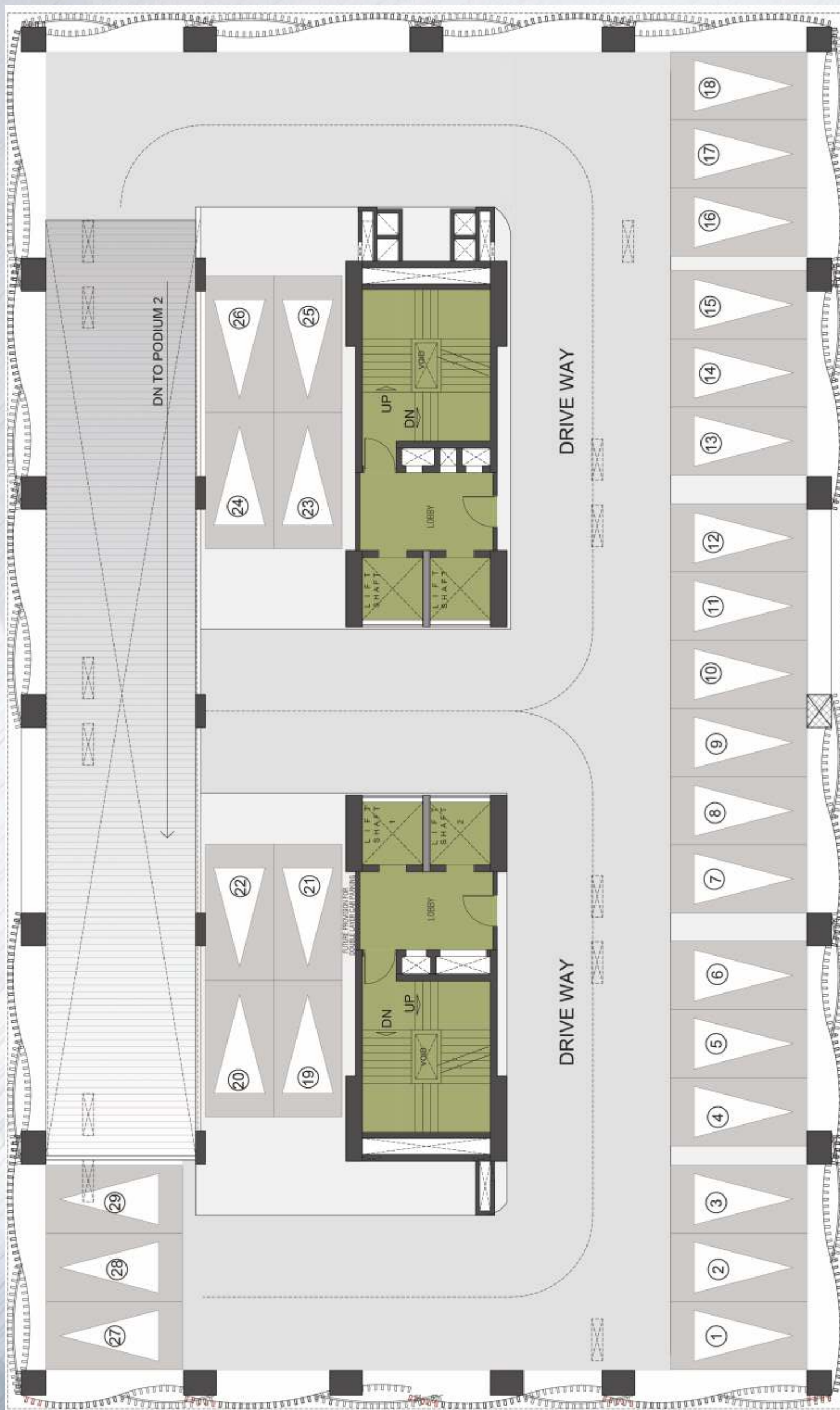
Podium 1



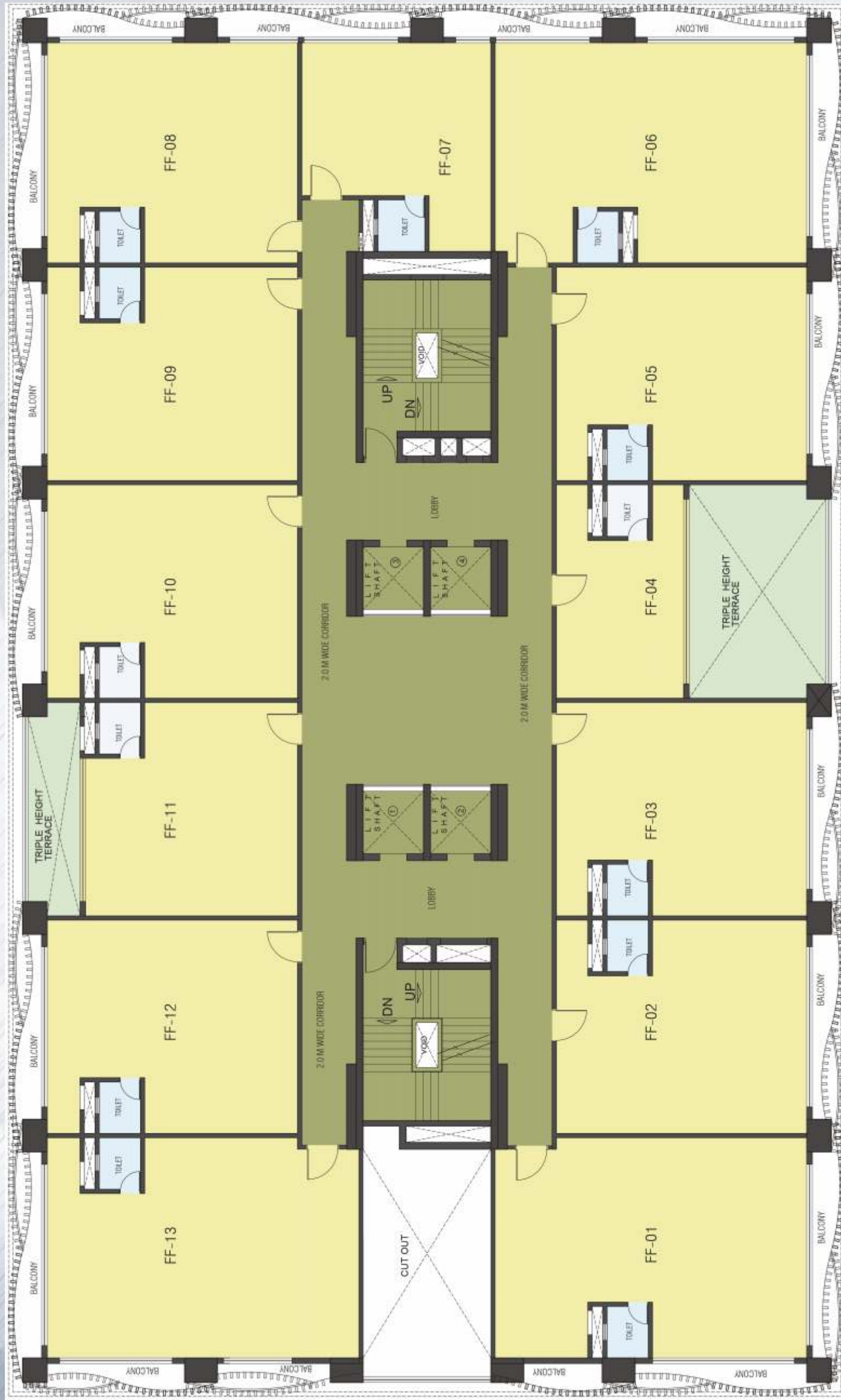
Podium 2



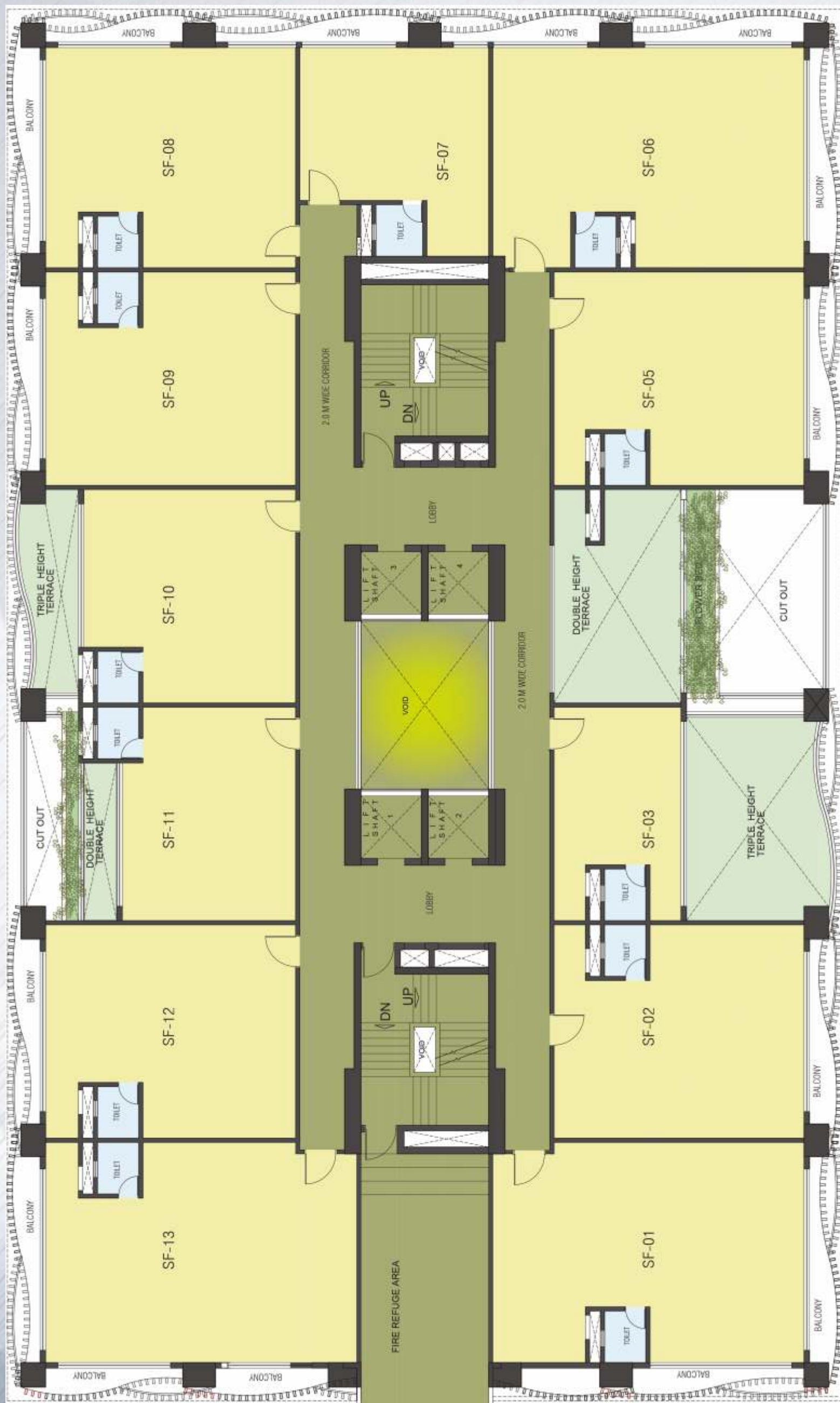
Podium 3



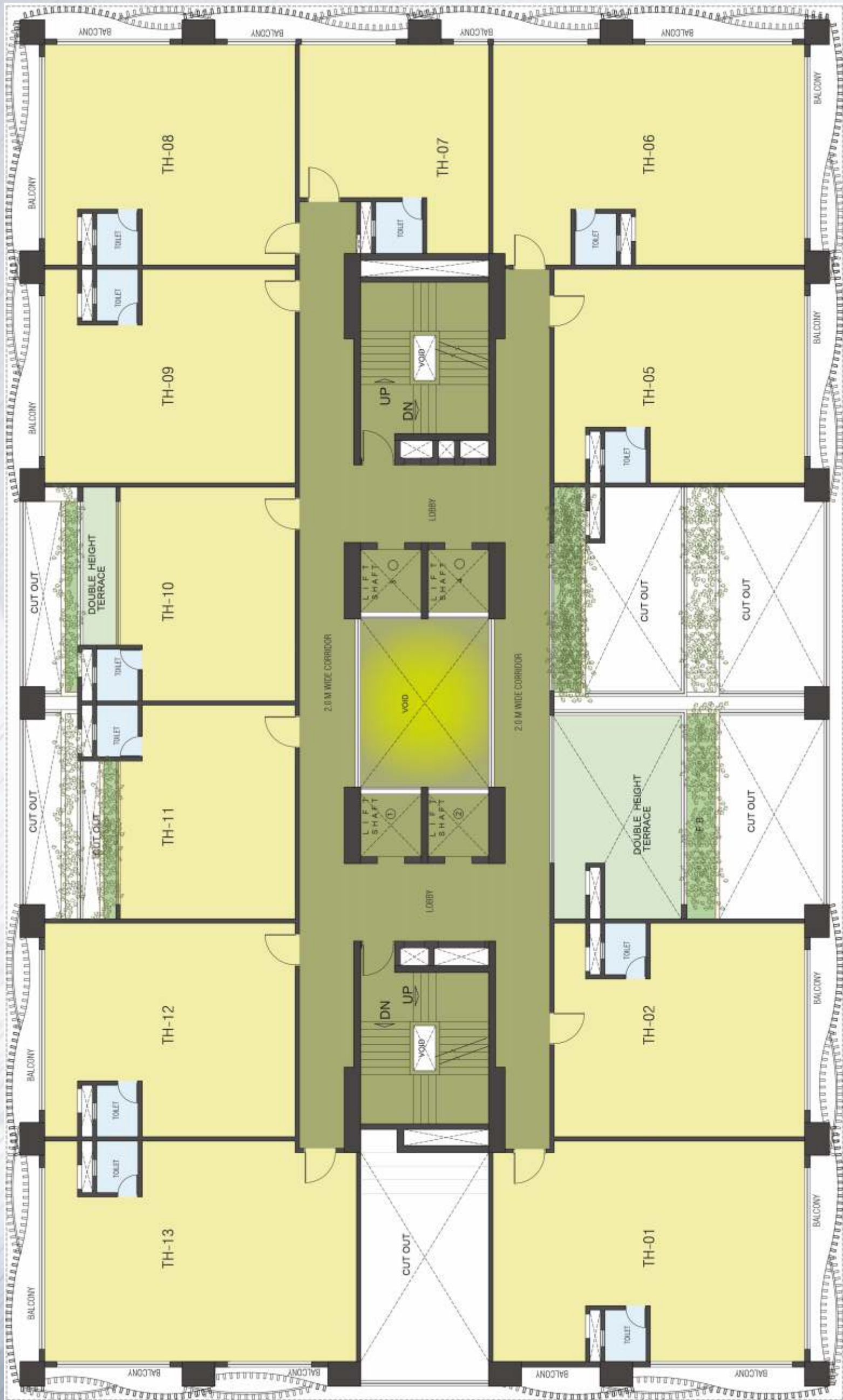
1st Floor



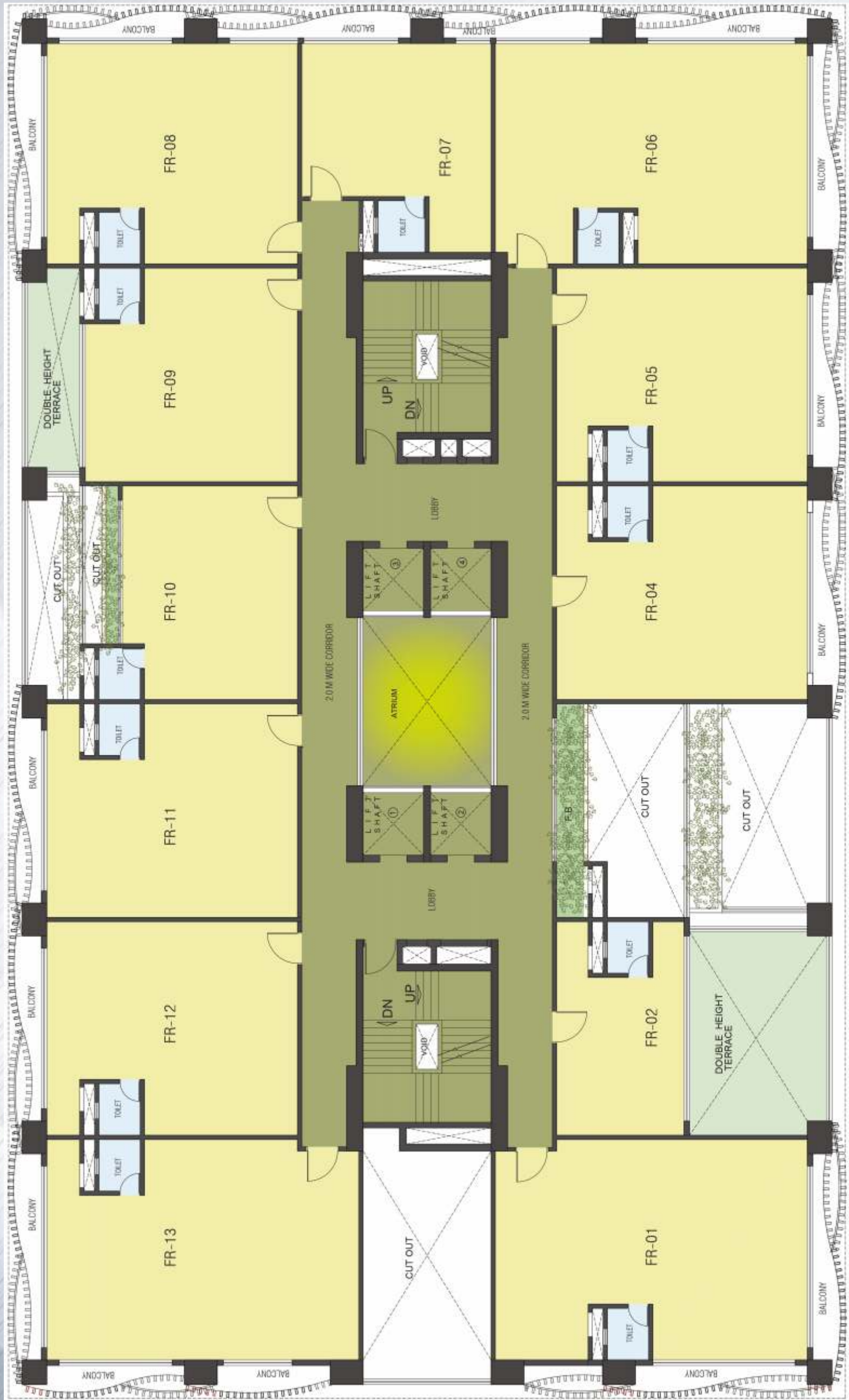
2nd Floor



3rd Floor



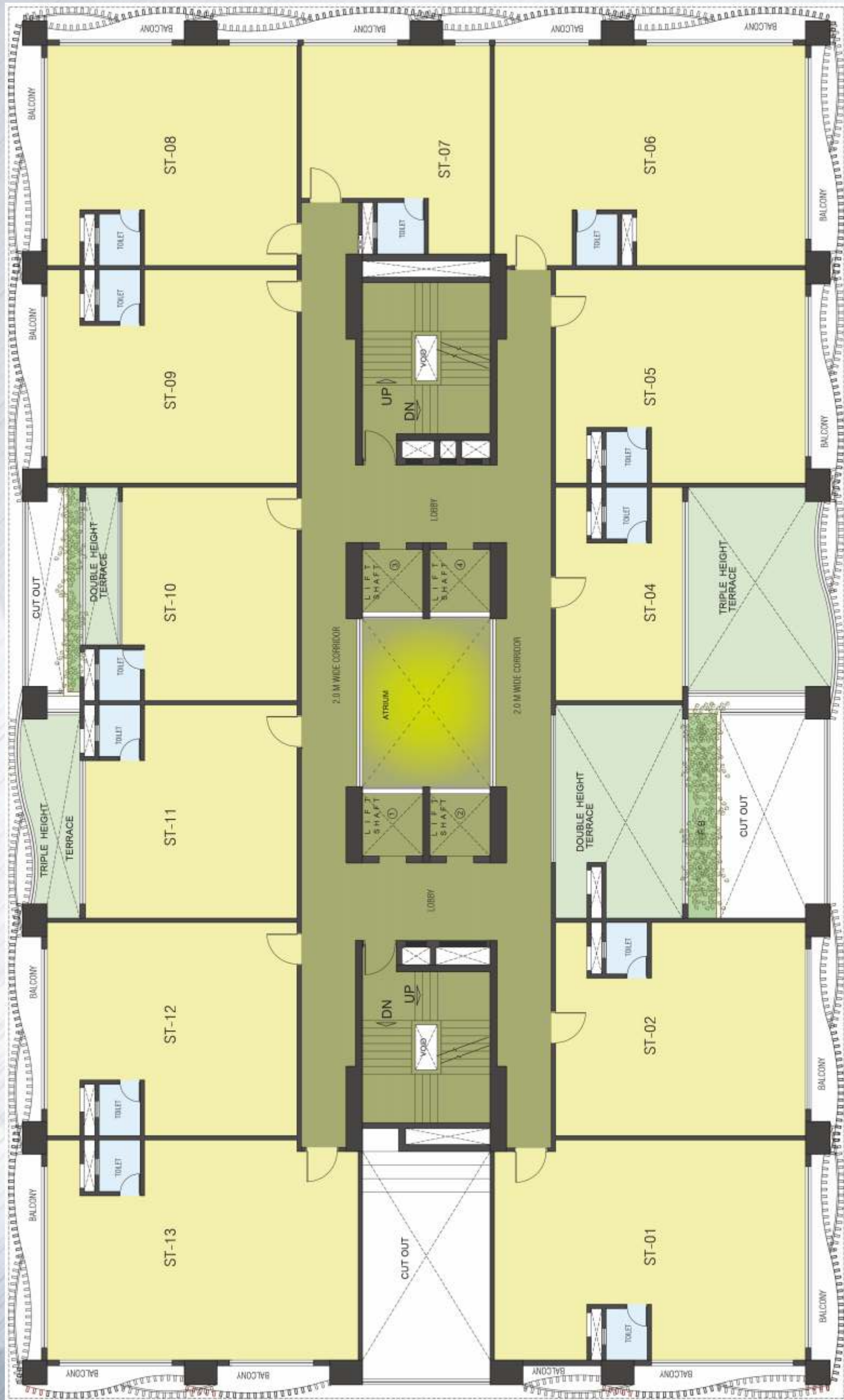
4th Floor



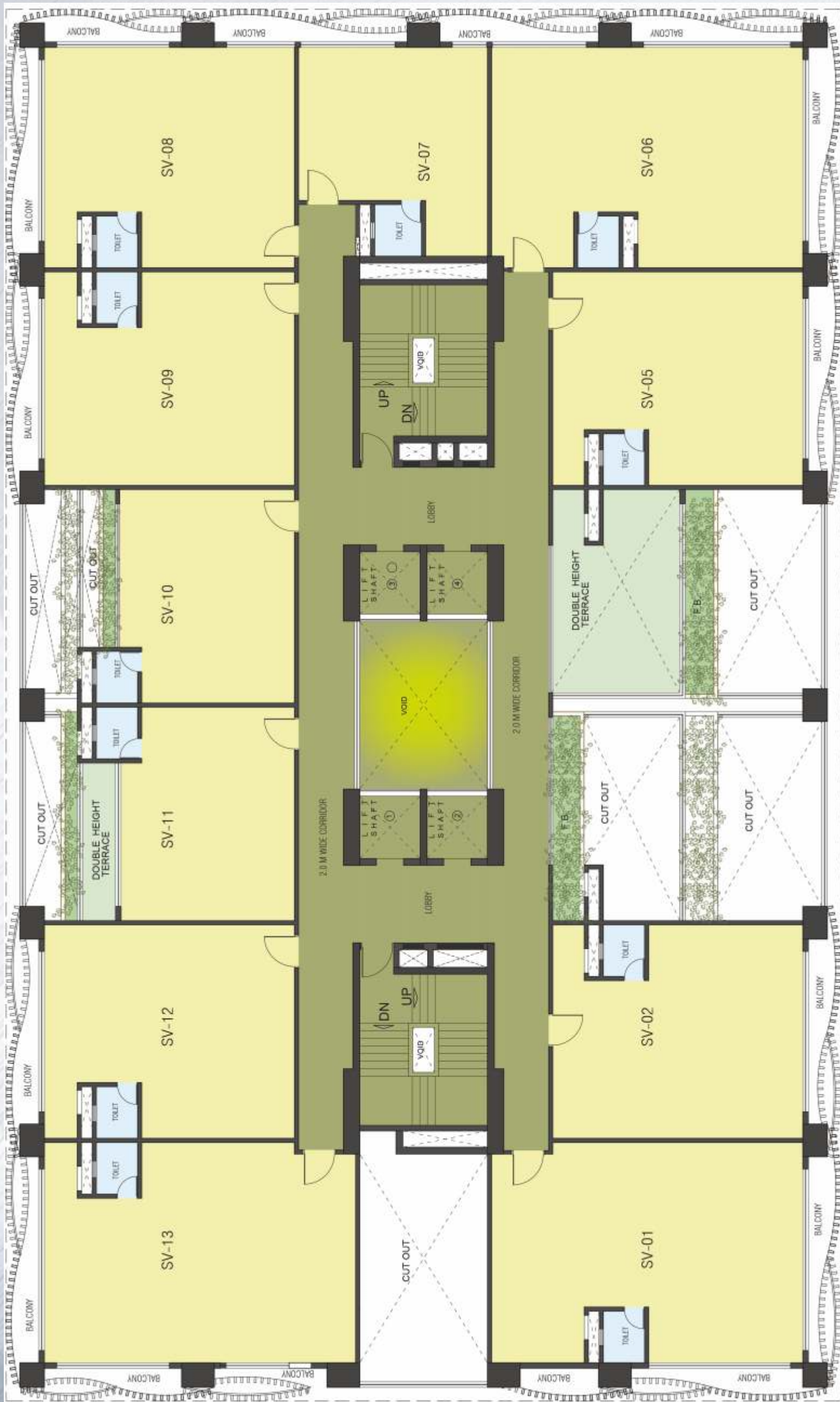
5th Floor



6th Floor



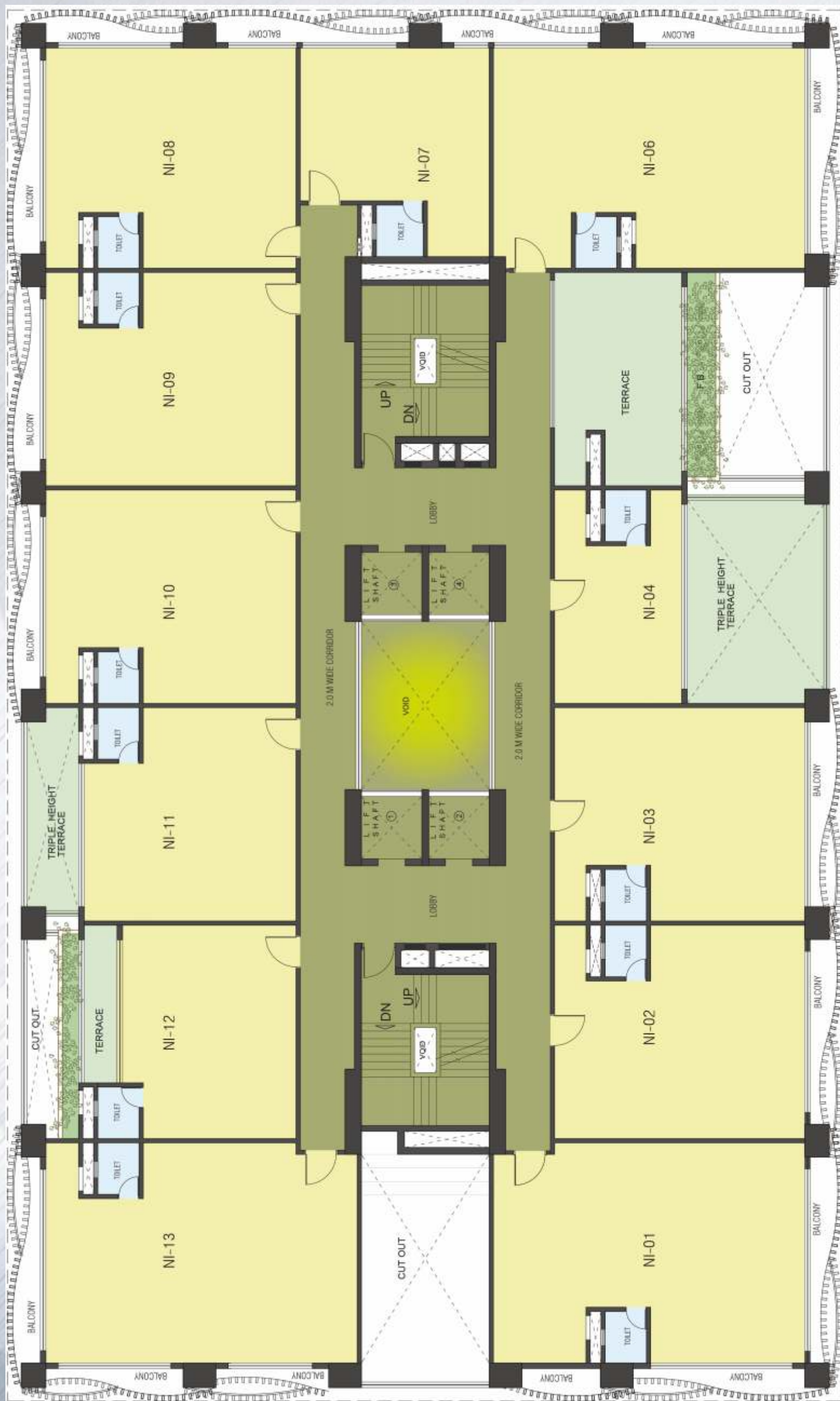
7th Floor



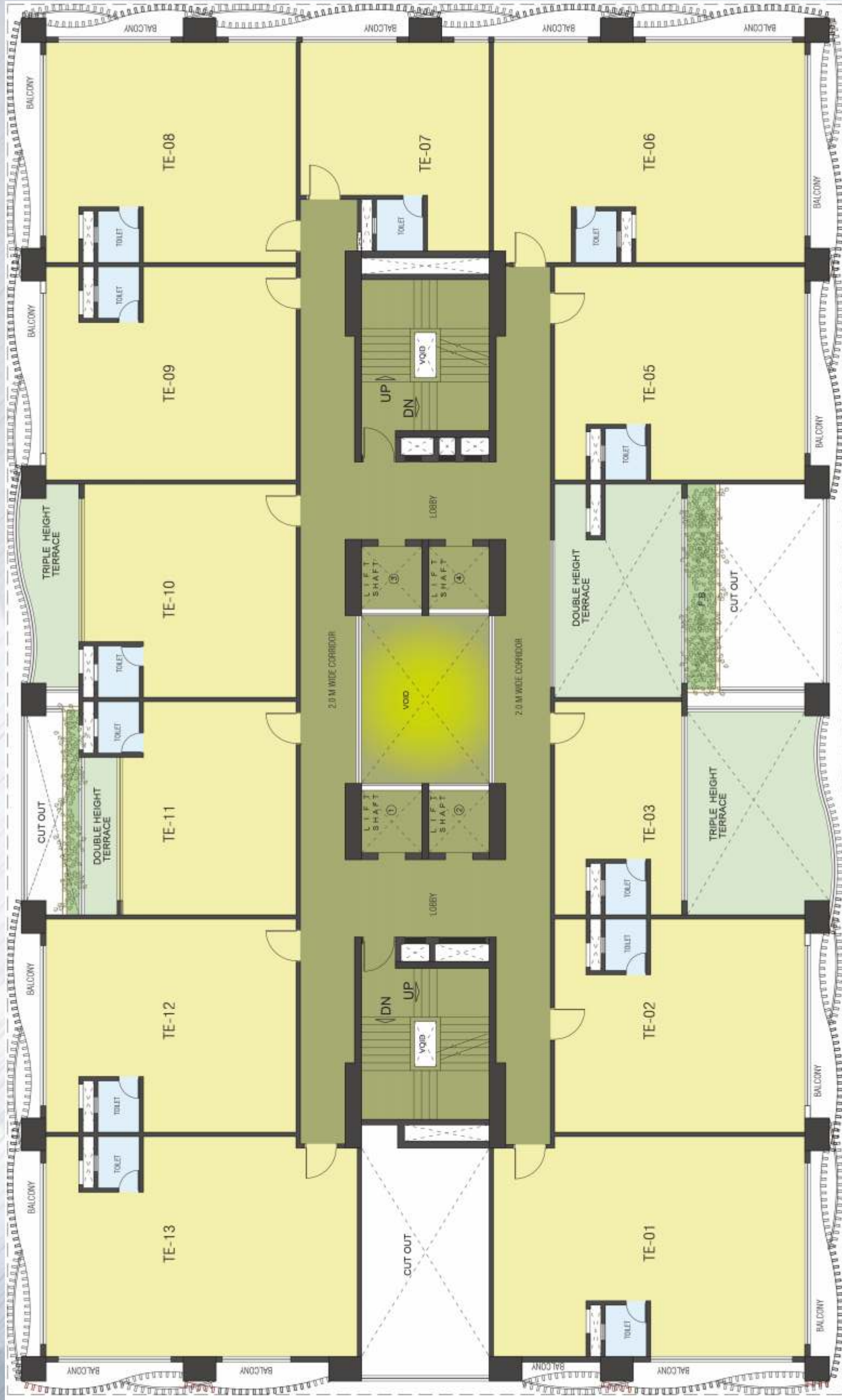
8th Floor



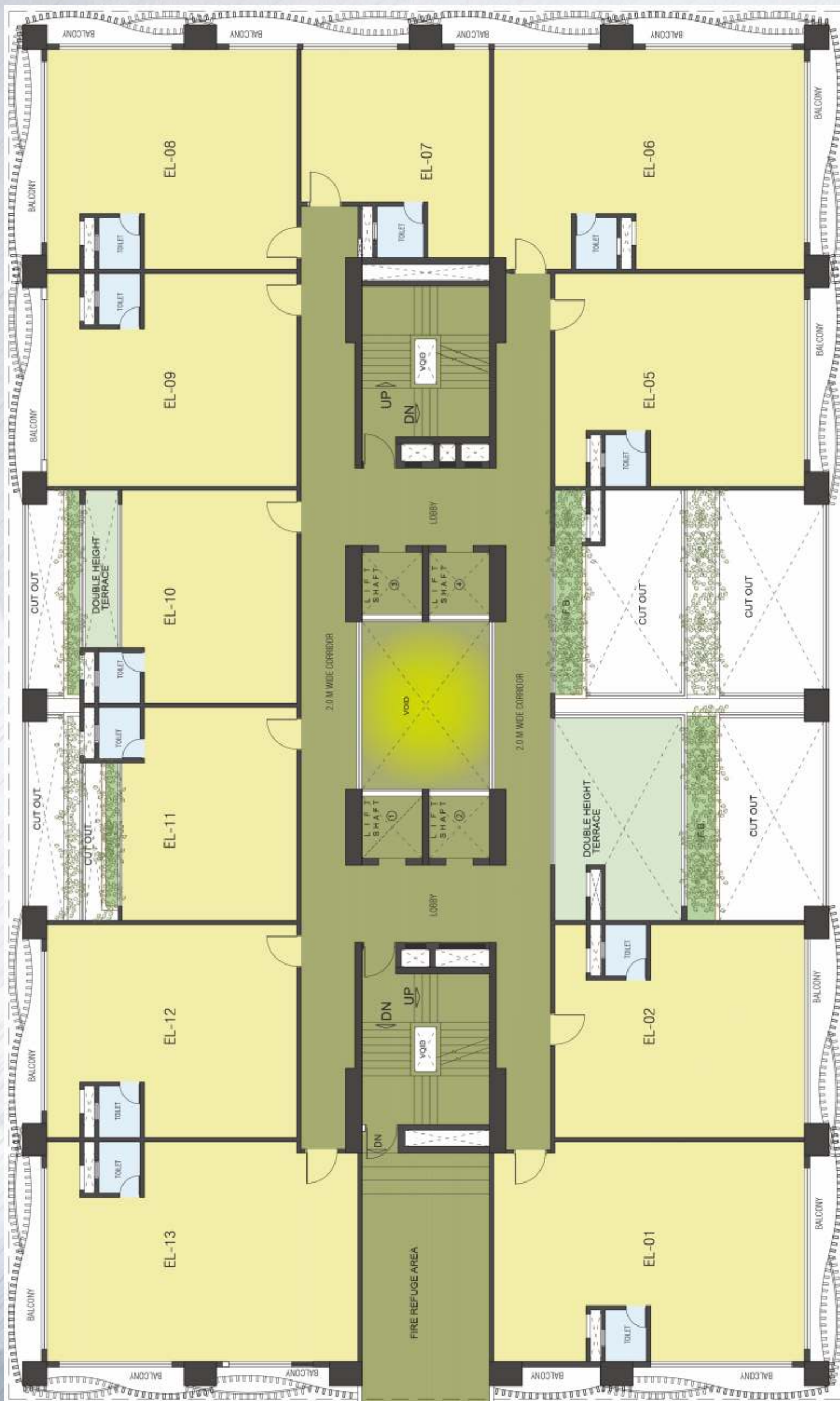
9th Floor



10th Floor



11th Floor



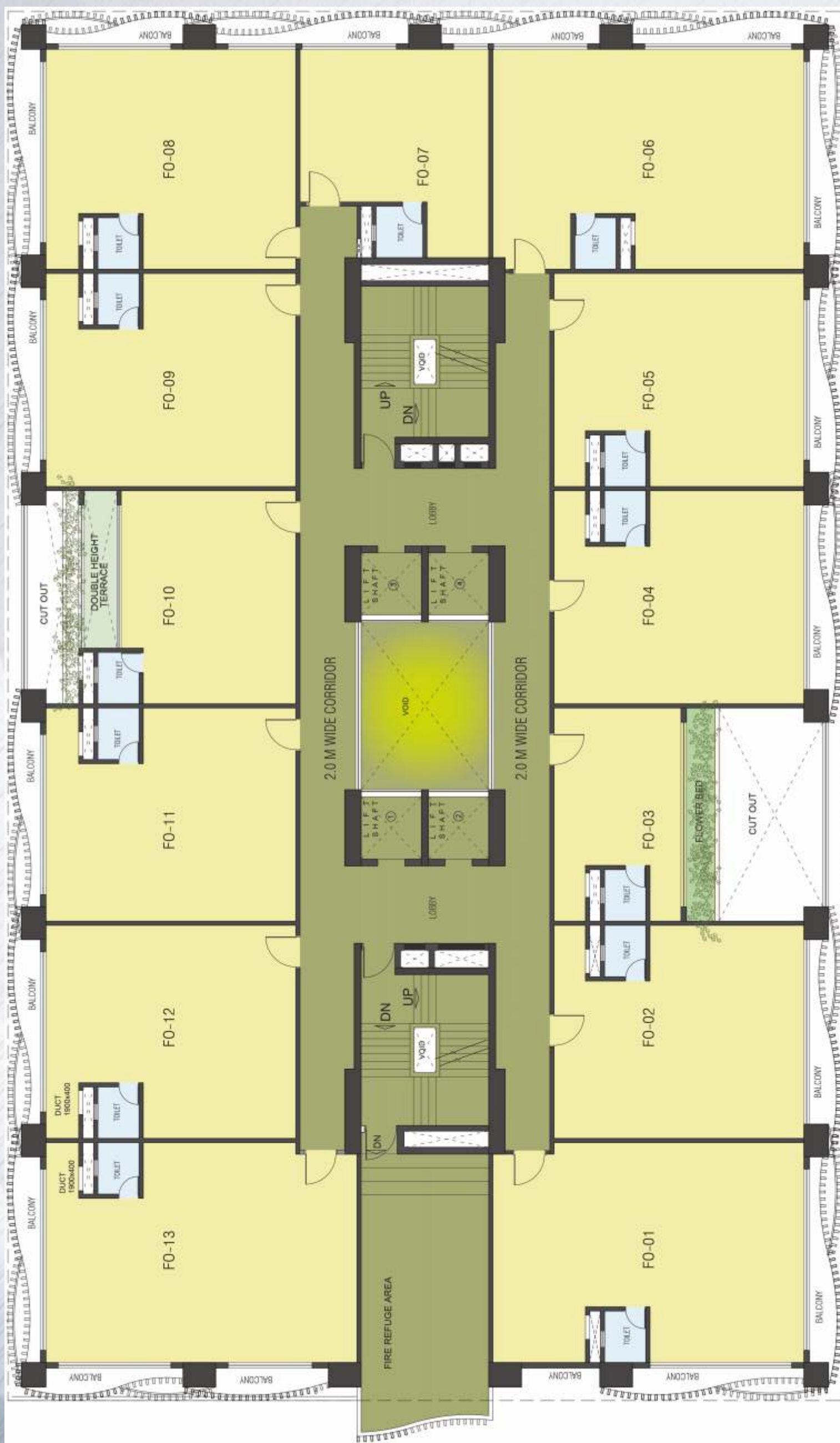
12th Floor



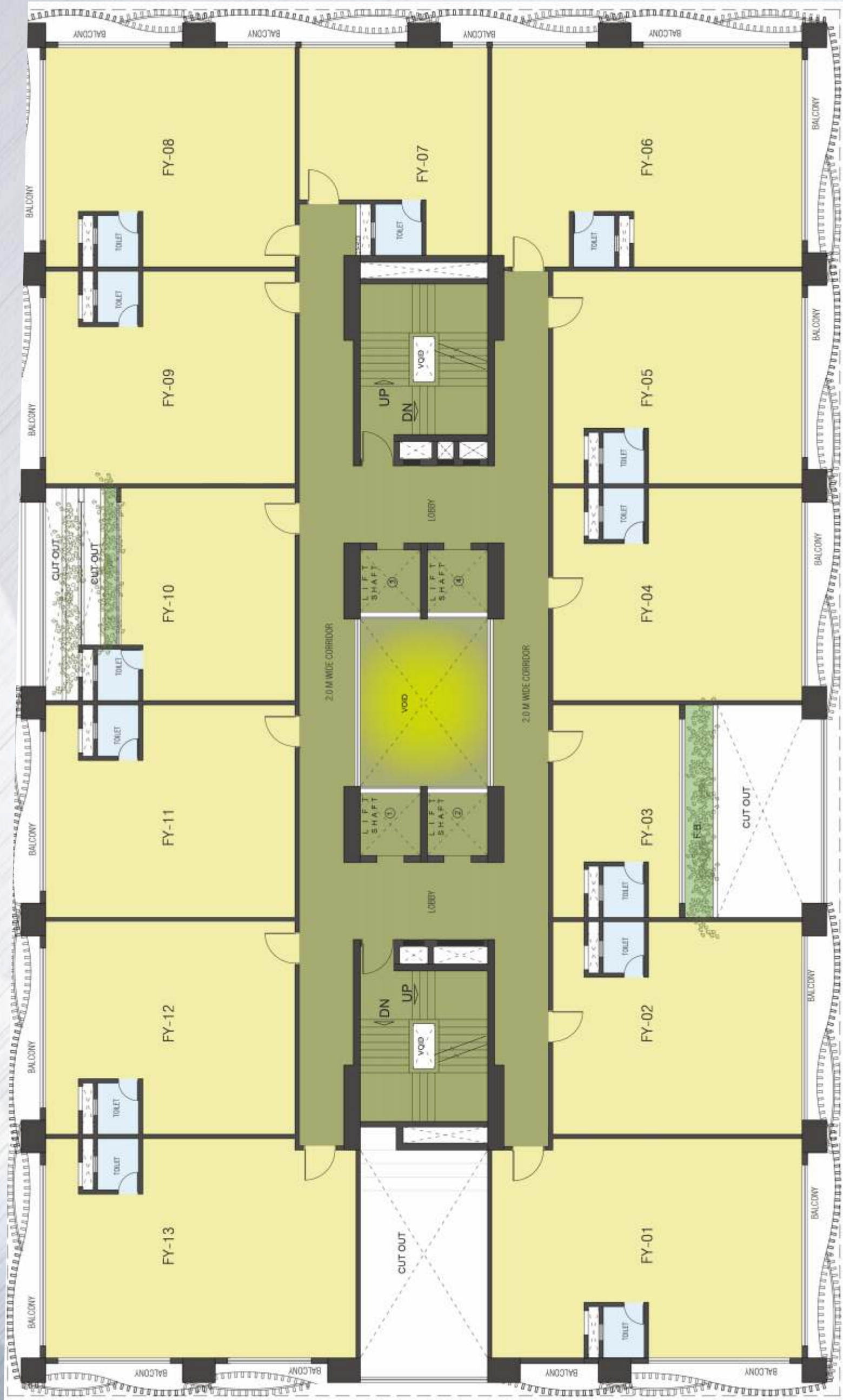
13th Floor



14th Floor



15th Floor



Terrace





Registered Office:

Acropolis, 13th Floor, , 1858/1 Rajdanga Main Road
Kasba, Kolkata 700107, West Bengal

www.emamirealty.com

The content published in this brochure is purely conceptual and not a legal offer/advice/representation/inducement. The plans shown in the brochure are indicative only. Nothing other than the amenities and specification enshrined in standard brochure is committed to be provided to the purchaser by Emami Realty Limited unless otherwise specifically mentioned in the agreement for sale. All images are an artistic impression and used for illustrative purposes only. Emami Realty Limited will not be responsible for any omissions or incorrect understanding of any of the terms. Draft for internal circulation only.