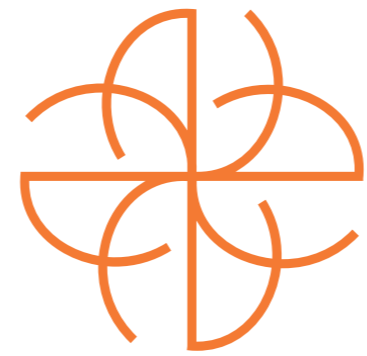




Rare...EVEN FOR *Juhu*



aaradhya
EVOQ

Enjoy the fascinating grandiose, exhilarating luxury and quality lifestyle all under one roof at **Aaradhya EVOQ**. To add to this, a pristine and picturesque city view with an elite neighbourhood makes it an awe-inspiring experience.



MICL Group roots date back to the year 1964, epitomised on a lineage spanning 5 decades of experience, trust and holistic growth. Over the years we have built some of the most challenging and exceptional projects across India. A meticulously planned diversification across industry verticals like Ports infrastructure, Residential townships, Commercial projects, Institutions - Hospitals, Industrial - IT projects & Futuristic Lifestyle houses. What sets us apart is our before time delivery of projects, which reinforces our customers trust & faith in MICL Group.



50+ YEARS
OF QUALITY EXECUTION &
TIMELY DELIVERY OF PROJECTS

1000+
HAPPY FAMILIES

9 COMPLETED
PROJECTS

2 MILLION+
SQ.FT.
OF RESIDENTIAL DEVELOPMENT

8 PRESTIGIOUS AWARDS



COMPLETED PROJECTS

Delivered ahead of time.

aaradhya | tower
GHATKOPAR-EAST



1 MONTH
BEFORE TIME POSSESSION
MAY 2013 TO MAY 2015

atmosphere
live it
MULUND (WEST)



MahaRERA Registration No. P5180001243
07 MONTHS
BEFORE TIME POSSESSION
JAN 2015 TO FEB 2019

aaradhya | saphalya
GHATKOPAR-EAST



10 MONTHS
BEFORE TIME POSSESSION
FEB 2015 TO MAY 2016

aaradhya | nalanda
GHATKOPAR-EAST



09 MONTHS
BEFORE TIME POSSESSION
AUG 2015 TO OCT 2016

aaradhya | swastik
CHEMBUR EAST



04 MONTHS
BEFORE TIME POSSESSION
SEP 2015 TO JULY 2017

aaradhya | residency
GHATKOPAR-WEST



MahaRERA Registration No. P5180000362
6 MONTHS
BEFORE TIME POSSESSION
OCT 2015 TO MAY 2017

aaradhya | signature
SION-WEST



MahaRERA Registration No. P5190000049
09 MONTHS
BEFORE TIME POSSESSION
OCT 2015 TO APR 2018

aaradhya | one
CHEMBUR (WEST)



MahaRERA Registration No. P5180000333
07 MONTHS
BEFORE TIME POSSESSION
NOV 2015 TO MAY 2018

aaradhya | nine
GHATKOPAR-EAST



MahaRERA Registration No. P5180000229
10 MONTHS
BEFORE TIME POSSESSION
MARCH 2017 TO DEC 2019

ONGOING PROJECTS



MahaRERA Registration No. P51700018244, P51700017865 & P51700030611

aaradhya
HIGHPARK
BEYOND THE EXPECTED
(Near Dahisar Check Naka)



MahaRERA Registration No. P51800020183

aaradhya
EASTWIND
Vikhroli (East)



MahaRERA Registration Nos. P51800024676, P51800027588, P51800027826, P51800027922 & P51800029288

aaradhya
ne earth
Where life begins
Ghatkopar (East)



MahaRERA Registration No. P51800028166

insignia
Vile Parle (West)



MahaRERA Registration No. P51800019950

atmosphere
2
Mulund (West)

ONGOING COMMERCIAL PROJECTS



MahaRERA Registration No. P51700023844

aaradhya
PRIMUS
(Near Dahisar Check Naka)



MahaRERA Registration No. P51800024845

THE
GAT=WAY
GMLR, Mulund (West)



MahaRERA Registration No. P51800027659

aaradhya
SQUARE
Ghatkopar (East)

UPCOMING PROJECTS

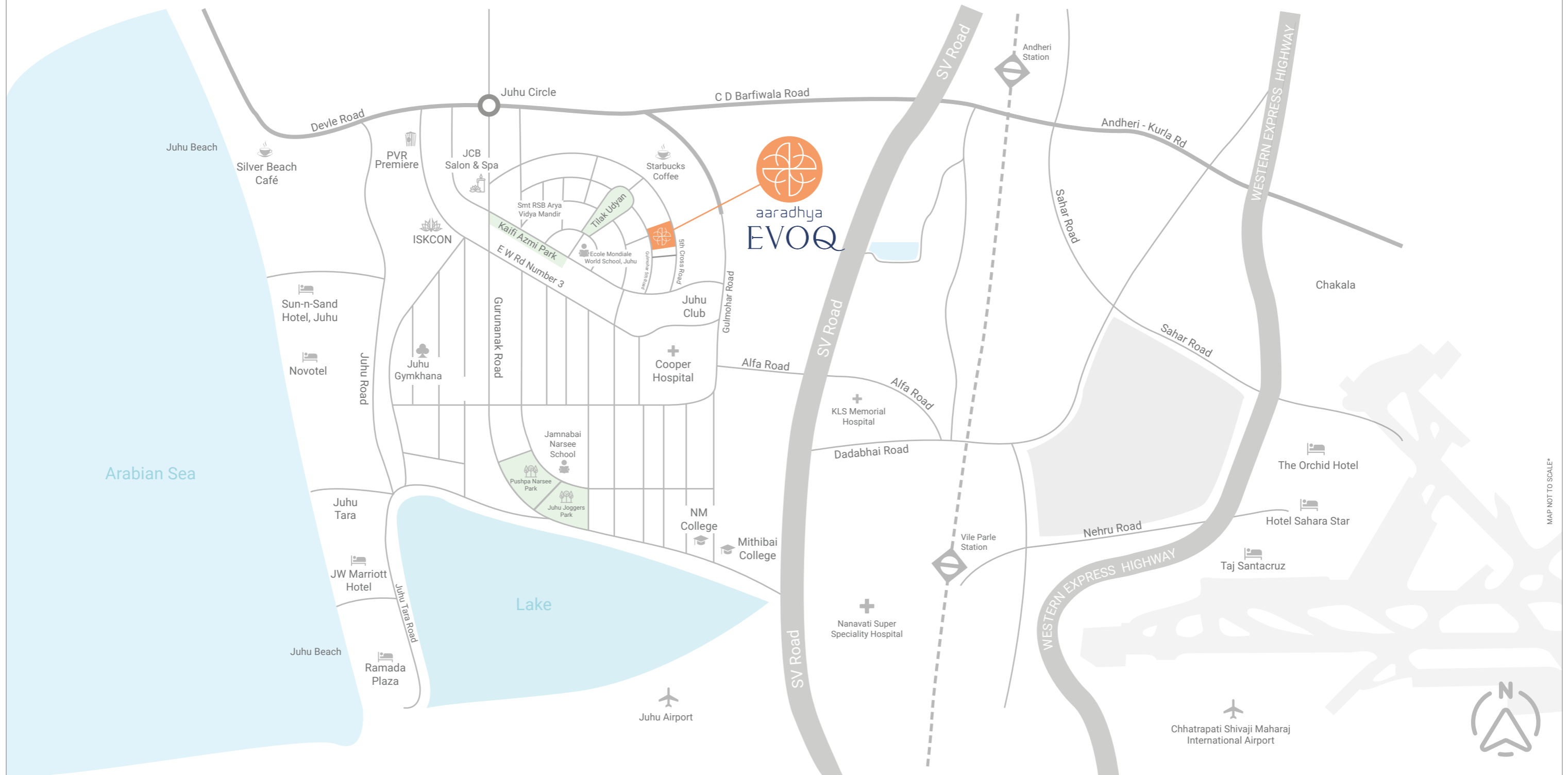
📍 Tardeo

📍 Chembur

📍 Vile Parle

JUHU

A PRIVILEGED ADDRESS OF THE RICH & FAMOUS...
FOR AN ELITE FEW LIKE YOU



Pleasurable TASTE BUDS

Satisfy your palate on those majestic dinner outings with a gamut of impeccable food options to choose from – Haute cuisine, Romanian, flavourful Thai to earthy Indian food...name it and you have it. Top it up with a sweet tinge of crème Brulee!



*Stock Image



*Stock Image



*Stock Image



*Stock Image



*Stock Image

FINE DINE & CAFÉ'S

- Saffron JW Marriott
- Gada da Vida
- Cecconi's
- Bayroute
- Fable
- Haaochi
- Melting Point
- Prithvi Café
- Bora Bora
- Estella
- Starbucks
- Silver Beach Café
- Tanatan - Kichen & bar
- Facing East
- Dakshinayan
- Little Italy
- Poetry by Love & Cheesecake

A close-up photograph of a young man and woman sitting in the front seats of a car. The woman, on the left, has long blonde hair and is wearing dark sunglasses and a white top. She is smiling broadly, showing her teeth. The man, on the right, has a beard and is wearing dark sunglasses and a white shirt. He is also smiling. The background is blurred, suggesting they are driving through a city or a scenic area. The overall mood is bright and happy.

Unexplored
GRANDEUR

Creating a community of aristocrats, Aaradhya EVOQ bestows grandiose and affluence to its residents. Your awe-inspiring Condominium resonates a well-equipped suite that is carved in the charms of this beautiful city.



*Stock Image



*Stock Image



*Stock Image



*Stock Image

MODISH *Pathway*

Don't make those stilettos wait because the lap of luxuriousness is here to acknowledge your red-carpet look. You can walk in your classy sheath dress with your Dreamy in the lanes of swanky Juhu culture. Enjoy your dinner dates the classic way at those majestic bistros around you.

RETAIL

- Ritu Kumar
- Anita Dongre
- Masaba
- Archana Kochhar
- Nivedita Saboo Couture
- Falguni Shane Peacock
- Shaze
- Aza Fashions
- Pernias Pop Up
- Jesal Vora
- The Bombay Store
- Fab India
- Oceana Clutches
- Birkenstock

ROYAL STAY ENCIRCLED WITH THE GLAMOROUS NEIGHBOURHOOD

5 STAR HOTELS

- Novotel
- Sun - N - Sand
- JW Marriott
- Ramada Plaza
- Sahara Star
- Taj Santacruz

RECREATIONAL HUBS

- Juhu Gymkhana
- Juhu Club
- Soho House
- The Club
- PVR Premiere

CONNECTIVITY

- D N Nagar Metro Station
- Domestic Airport
- International Airport

PARKS

- Kaifi Azmi Park
- Kishore Kumar Park
- Juhu Garden
- Juhu Joggers Park

ART GALLERIES

- Museum HD
- Gallery Zinc

COLLEGES

- NM College
- Mithibai College
- NMIMS

PLACES OF WORSHIP

- Iscon Temple
- Sai Baba Temple
- Shree Ganesh Temple
- Jain Derasar

HOSPITALS

- Cooper Hospital
- Nanavati Hospital
- Sujay Hospital
- Kokilaben Dhirubhai Ambani Hospital

SALONS

- Jcb Salon & Spa
- Kromakay - Amber Branch





UNCHARTERED

Serenity

Aaradhya EVOQ is a haven of opulence with a delightful view to reminisce forever. You will experience privilege in its entirety, with our avant-garde and spacious apartments. The affixed magnificent rooftops would ensure your get-togethers are an experience like never before. Your bespoke residences offer a tinge of sheek, packed with unmatched amenities and serene street views.

MESMERIZING *Cityscape*

Wake up to a spectacular view of our grandeur and futuristic marvel encompassed within a pristine and picturesque neighbourhood. An abode where your bustling days would be more vibrant and your heart will gleam happiness. An architectural elevation that would make you feel paradisiacal. You cannot resist splurging on a once in a lifetime experience.



REFRESHING *Rooftops*

An Enthralling experience like never before at Aaradhya EVOQ's stunning Rooftop. Encompassed with luxury and soaked in multitude of amenities, the enchanting sky garden is a place to rejuvenate your Mind, Body and Soul. Cabana sit-outs, peaceful star gazing on our magnificent patio is a rare blissful experience.





AMENITIES

Much more than just a comfortable stay!

An awe-inspiring Royal premise, elegant interiors and inexhaustible amenities all at your fingertips at **Aaradhya EVOQ**.
It's fun, fitness, pleasure and entertainment all encapsulated under one roof.

Clubhouse Amenities

- Fully Equipped Fitness Centre
 - Yoga & Meditation Zone
 - Zumba
- Indoor Game Land
 - Pool Table
 - Table Tennis
 - Carrom Board
 - Foosball Table
 - Poker Table
- Souped-up Banquet Hall
- Riveting Spa With Jacuzzi & Steam

Sky Amenities

- Reflection Pool With Aquatic Fitness Zone
- Silver Screen Theatre
- Calming Garden Sit-out
- Elegant Deck Seating
- Refreshing Café Zone
- Comfy Cabanas
- Ever-flowing Juice Bar
- Bonfire Style Sitout Area
- Thematic Plantation*
- Peaceful Zen Garden
- Incredible Viewing Deck

ROOFTOP AMENITY FLOOR PLAN





ABSOLUTE
Rejuvenation

Our lavish activity zone has lots in-store to keep you engaged and in good kilter. Our fully-equipped gymnasium provides solace to the fitness freak. The Steam and Jacuzzi enclosure ensures your mind and body is blissfully rejuvenated. Continue to explore your game zone with table tennis, board game, pool table, poker table and foosball table etc.



AWE-INSPIRING
Median

Indulge in sheer calmness with our sky-garden, Cabana sit-outs & Yoga pavilion. Lazing in our decked seating amidst the greenery chiselled enclave with our top notch Reflection Pool & a Treadmill will further enchant you. In between, you are also spoilt for choice to be enthralled with Aqua life.



YOUR
Comfort Zone!

Break-away from the shackles of mental and physical stress by soaking in a plethora of amenities at our awe-inspiring relaxation enclosure. Experience a quality family time or take solace at our top-notch gym. Embrace yourself at the pool side or enjoy a dinner feast with your guest. All this and much more.....**just at Aaradhya EVOQ**



Fitness RELOADED

Are you a fitness enthusiast? Take a long sigh of relief as our fitness centre amplifies your health goals. Aaradhya EVOQ's gymnasium is an ode to Juhu's fitness culture. It is well-furnished and fully-equipped with niche training gear to help you attain those desired results.



Replenishing JOY

Relaxation is an incumbent to a healthy mind. Aaradhya EVOQ promotes holistic well-being by facilitating families to spend quality time together and thus promote bonding to rekindle togetherness. Exhilarate your free time with an entertainment packed indoor activities like Carrom board, Foosball Table, Chess, Table Tennis and Pool Table etc.



Rejuvenating

ARDOUR

Cease your day with our rejuvenation centre. Our mesmerizing spa with jacuzzi & steam guarantees a spectacular experience. The focus is to relieve you of your physical and mental stress & to treat you with luxury and solace.

A photograph of a circular dining room. The room features a large, curved window with a dark frame and gold-colored accents. Inside, a round wooden table is set with glassware and plates, surrounded by wooden chairs with green seats. A chandelier hangs from the ceiling. The floor is made of wood. The overall atmosphere is elegant and sophisticated.

Elegant

BASH

Our scintillating and exquisite Banquet resonates with luxury and ensures you have the best of your coveted celebrations. The Banquet's décor adds the right bling of glitz and glamour to your jamboree. We have topped this up with accommodating spaces, exalted fittings, dry pantry and elegant cloakrooms to ensure the guests are at ease.

COMMON AREA *Amenities*

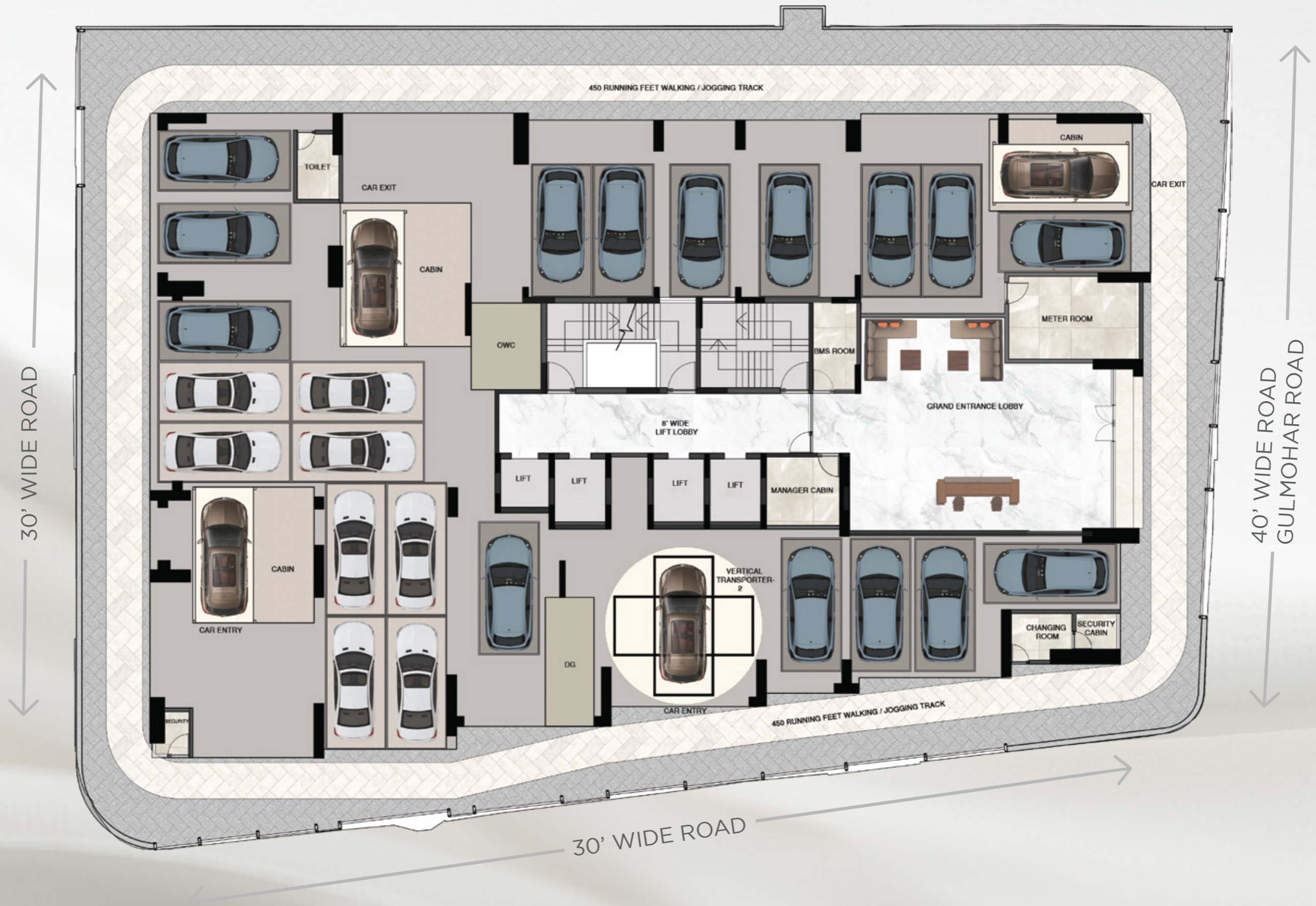
- Classy And Swift Elevators From Leading Brands Like Schindler, Otis And Equivalent
- Futuristic Fully Mechanized Robotic Parking
- Enhanced Security With All-around CCTV In Common Areas
- Air Conditioned Grand Entrance Lobby
- Power Backup Supply For Zero Power Shortages
- CFO Compliant And State-of-the-art Fire Protection System
- Texture paint on external walls
- Efficacious Organic Waste Converter
- Sophisticated Ip-based Intercom System
- Reliable Earthquake Resistant Structure
- Vastu Compliant apartments
- ***Stylish UPVC windows with a sassy look***
- ***High-end Security Through Modern Video Door Phones At Every Apartment***
- ***Glamorous Deck With Aesthetic Glass Railing***

Note: *All Apartments would be bare shell



FLOOR PLANS

GROUND FLOOR LAYOUT



The above schematic Drawing / Plan/ Layout is subject to approval from concerned government. Authority from time to time & may change as per their approval*



TYPICAL FLOOR PLAN



SUITE NO	FLAT TYPE	CATEGORY	RERA CARPET AREA	RERA BALCONY AREA	TOTAL AREA
1	3 BHK	LUXE	1356 SQ. FT	74 SQ. FT	1430 SQ. FT
2	4 BHK	LUXE	1998 SQ. FT	272 SQ. FT	2270 SQ. FT
3	3 BHK	SUPREME	1275 SQ. FT	-	1275 SQ. FT
4	4 BHK	ELITE	2344 SQ. FT	431 SQ. FT	2775 SQ. FT
5	4 BHK	SUPREME	1713 SQ. FT	117 SQ. FT	1830 SQ. FT

The above schematic Drawing / Plan/ Layout is subject to approval from concerned government. Authority from time to time & may change as per their approval*



3 BHK LUXE

SUITE NO - 1

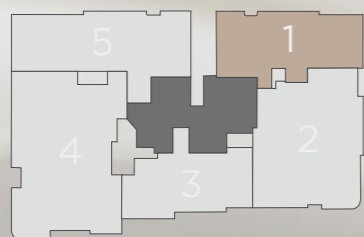
RERA C.A. - 1356 sq.ft. / 126.01 sq.mtr.

BALCONY - 74 sq.ft. / 6.87 sq.mtr.



ENT. FOYER	5'-0" X 8'-1"
LIVING & DINING	19'-0" X 22'-3"
POOJA ROOM	5'-6" X 6'-10"
KITCHEN	16'-0" X 9'-0"
M. BEDROOM-1	14'-0" X 10'-3"
	5'-6" X 3'-3"
BALCONY	3'-4" X 11'-3"
EN-SUITE WASHROOM	5'-0" X 8'-0"
M. BEDROOM-2	10'-6" X 16'-2"
	5'-0" X 5'-0"
EN-SUITE WASHROOM	5'-0" X 9'-0"
GUEST BEDROOM	14'-0" X 10'-0"
COMMON WASHROOM	8'-0" X 5'-1"
BALCONY	3'-4" X 10'-3"

TOTAL AREA - 1430 SQ.FT.



4 BHK SUPREME

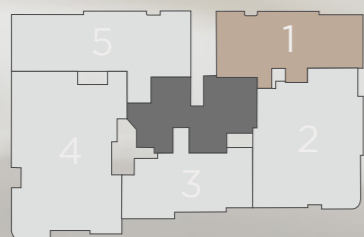
SUITE NO - 1 (8th FLOOR)

RERA C.A. - 1656 sq.ft. / 153.85 sq.mtr.
BALCONY C.A. - 74 sq.ft. / 6.87 sq.mtr.



ENT. FOYER	5'-0" X 8'-1"
LIVING & DINING	19'-0" X 22'-3"
KITCHEN	16'-0" X 9'-0"
M. BEDROOM-1	14'-0" X 10'-3"
	5'-6" X 3'-3"
BALCONY	3'-4" X 11'-3"
EN-SUITE WASHROOM	5'-0" X 8'-0"
M. BEDROOM-2	10'-6" X 16'-2"
	5'-0" X 5'-0"
EN-SUITE WASHROOM	5'-0" X 9'-0"
M. BEDROOM-3	19'-6" X 11'-3"
WALK-IN WARDROBE	6'-5" X 6'-6"
EN-SUITE WASHROOM	10'-6" X 5'-8"
GUEST BEDROOM	12'-9" X 10'-0"
COMMON WASHROOM	8'-6" X 5'-1"
BALCONY	3'-4" X 10'-3"

TOTAL AREA - 1730 SQ.FT.



4 BHK LUXE



SUITE NO - 2

RERA C.A. - 1998 sq.ft. / 185.59 sq.mtr.
BALCONY C.A. - 272 sq.ft. / 25.27 sq.mtr.

ENT. FOYER	10'-8" X 5'-6"
LIVING	27'-0" X 13'-3"
BALCONY	4'-6" X 13'-3"
DINING	12'-0" X 13'-6"
HELPERS ROOM	6'-0" X 10'-1"
HELPERS TOILET	4'-0" X 6'-5"
KITCHEN	14'-6" X 9'-3"
UTILITY	4'-6" X 9'-3"
M.BEDROOM-1	20'-0" X 11'-3"
	3'-11" X 5'-8"
EN-SUITE WASHROOM	8'-0" X 5'-8"
M. BEDROOM-2	11'-0" X 16'-9"
	5'-0" X 2'-8"
BALCONY	10'-9" X 4'-0"
EN-SUITE WASHROOM	6'-3" X 10'-3"
M. BEDROOM-3	11'-7" X 16'-7"
DRESSER	5'-6" X 6'-3"
BALCONY	3'-6" X 17'-3"
	15'-6" X 4'-6"
EN-SUITE WASHROOM	5'-6" X 9'-0"
GUEST BEDROOM	10'-0" X 17'-0"
COMMON WASHROOM	5'-0" X 7'-1"

TOTAL AREA - 2270 SQ.FT.



3 BHK SUPREME

③ ENTRANCE

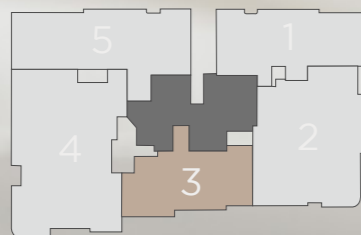


SUITE NO - 3

RERA C.A. - 1275 sq.ft. / 18.45 sq.mtr.

ENT. FOYER	5-0" X 9'-9"
LIVING	12'-0" X 23'-7"
DINING	8'-6" X 10'-0"
KITCHEN	8'-0" X 13'-1"
M. BEDROOM-1	10'-6" X 17'-0"
EN-SUITE WASHROOM	10'-6" X 6'-0"
M. BEDROOM-2	10'-6" X 17'-0"
EN-SUITE WASHROOM	9'-0" X 6'-0"
GUEST BEDROOM	10'-0" X 13'-2"
COMMON WASHROOM	6'-0" X 8'-9"

TOTAL AREA - 1275 SQ.FT.



4 BHK ELITE

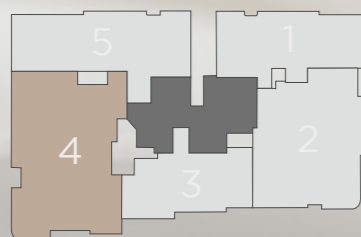
SUITE NO - 4

RERA C.A. - 2344 sq.ft. / 217.76 sq.mtr.
BALCONY C.A. - 431 sq.ft. / 40.04 sq.mtr.



ENT. FOYER	4'-2" X 6'-0"
LIVING & DINING	35'-0" X 15'-4"
TERRACE	7'-0" X 15'-7"
KITCHEN	20'-8" X 10'-0"
UTILITY	5'-0" X 10'-0"
COMMON WASHROOM	8'-0" X 5'-6"
HELPER ROOM	7'-0" X 12'-0"
HELPER TOILET	4'-0" X 6'-6"
M. BEDROOM-1	19'-0" X 12'-0"
TERRACE	7'-0" X 12'-3"
EN-SUITE WASHROOM	7'-8" X 6'-6"
M. BEDROOM-2	12'-0" X 18'-3"
BALCONY	12'-6" X 4'-9"
EN-SUITE WASHROOM	8'-0" X 7'-3"
M. BEDROOM-3	10'-3" X 15'-0"
	5'-6" X 5'-0"
EN-SUITE WASHROOM	5'-0" X 9'-6"
M. BEDROOM-4	11'-0" X 18'-6"
WALK-IN WARDROBE	11'-6" X 9'-6"
BALCONY	4'-0" X 20'-11"
	11'-6" X 4'-0"
EN-SUITE WASHROOM	10'-0" X 6'-0"

TOTAL AREA - 2775 SQ.FT.



4 BHK SUPREME

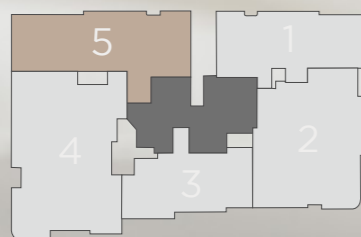
SUITE NO - 5

RERA C.A. - 1713 sq.ft. / 159.16 sq.mtr.
BALCONY C.A. - 117 sq.ft./ 10.87 sq.mtr.



ENTRANCE FOYER	9'6" X 9'4"
	7'0" X 2'8"
	4'3" X 4'6"
	5'8" X 4'6"
LIVING & DINING	13'-0" X 23'-9"
	5'-8" X 11'-3"
KITCHEN	17'-6" X 9'-0"
M. BEDROOM-1	15'-0" X 10'-10"
	8'-10" X 3'-3"
BALCONY	5'-0" X 11'-6"
EN-SUITE WASHROOM	8'-4" X 7'-0"
M. BEDROOM-2	15'-0" X 11'-3"
	5'-4" X 3'-3"
BALCONY	5'-0" X 11'-6"
EN-SUITE WASHROOM	8'-4" X 7'-6"
M. BEDROOM-3	11'-6" X 16'-2"
	5'-6" X 5'-0"
EN-SUITE WASHROOM	5'6" X 9'3"
GUEST BEDROOM	11'-4" X 12'-0"
COMMON WASHROOM	5'-3" X 7'-6"

TOTAL AREA - 1830 SQ.FT.



4.5 BHK LUXE

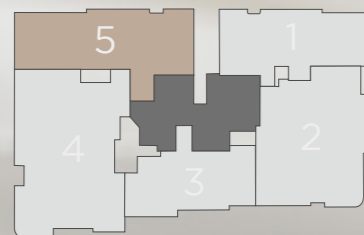
SUITE NO - 5 (11th FLOOR)

RERA C.A. - 2136 sq.ft. / 198.41 sq.mtr.
BALCONY C.A. - 199 sq.ft. / 18.49 sq.mtr.



ENTRANCE FOYER	9'-6" X 5'-4"
	7'-0" X 2'-8"
	4'-3" X 4'-6"
	5'-8" X 4'-6"
LIVING & DINING	13'-0" X 23'-9"
	5'-8" X 11'-3"
KITCHEN	17'-6" X 9'-0"
STUDY/HOME OFFICE	7'-0" X 12'-3"
M. BEDROOM-1	19'-0" X 12'-0"
	8'-4" X 7'-6"
TERRACE	7'-0" X 12'-0"
EN-SUITE WASHROOM	12'-2" X 6'-6"
M. BEDROOM-2	15'-0" X 22'-6"
BALCONY	5'-0" X 23'-0"
EN-SUITE WASHROOM	8'-4" X 10'-9"
M. BEDROOM-3	11'-6" X 16'-2"
	5'-6" X 5'-0"
EN-SUITE WASHROOM	5'-6" X 9'-3"
GUEST BEDROOM	11'-0" X 12'-0"
COMMON WASHROOM	5'-3" X 7'-6"

TOTAL AREA - 2335 SQ.FT.



The above schematic Drawing / Plan/ Layout is subject to approval from concerned government. Authority from time to time & may change as per their approval*

4 BHK LUXE

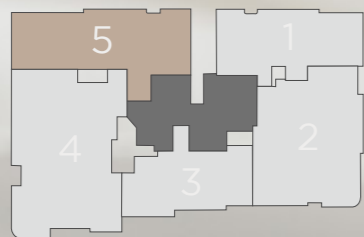
SUITE NO - 5 (12th FLOOR)

RERA C.A. - 2011 sq.ft. / 186.83 sq.mtr.
BALCONY C.A. - 199 sq.ft. / 18.49 sq.mtr.



ENTRANCE FOYER	9'6" X 5'4"
	7'0" X 2'8"
	4'3" X 4'6"
	5'8" X 4'6"
LIVING & DINING	13'-0" X 23'-9"
	5'-8" X 11'-3"
KITCHEN	17'-6" X 9'-0"
M. BEDROOM-1	19'-0" X 12'-0"
	8'4" X 7'6"
TERRACE	7'-0" X 12'-0"
EN-SUITE WASHROOM	7'8" X 6'6"
M. BEDROOM-2	15'0" X 22'6"
BALCONY	5'-0" X 23'-0"
EN-SUITE WASHROOM	8'4" X 10'9"
M. BEDROOM-3	11'-6" X 16'-2"
	5'-6" X 5'-0"
EN-SUITE WASHROOM	5'6" X 9'3"
GUEST BEDROOM	11'-3" X 12'-0"
COMMON WASHROOM	5'-3" X 7'-6"

TOTAL AREA - 2210 SQ.FT.



A COLLABORATION IN *Expertise*



**MAN
INFRACONSTRUCTION
LIMITED**

Man Infraconstruction Limited

Construction | Expertise & Execution

With a legacy of over **50 years** in delivering successful projects to esteemed clients, Man Infraconstruction Limited brings with it promises of **trust, quality and transparency**. We have successfully executed construction work for some of the most significant port projects in the country, including the **Jawaharlal Nehru Port Trust, Mundra Port, Chennai Port, Vallarpadam Port and the Pipavav Port**. It has also completed several commercial, institutional and industrial projects, besides having constructed 3 high rise Residential Towers of 55 storeys, which are **tallest towers in the western suburbs of Mumbai**.

Architect Hafeez Contractor

Hafeez Contractor

Elevation Architect

The Conceptualisation of Aaradhya EVOQ Elevation & Interior Designing of Grand Entrance Lobby and Clubhouse is carried out by Hafeez Contractor. This Indian architectural design consultancy firm was presented with the prestigious Padma Bhushan Award in 2016 and is internationally renowned for its unique design concepts and bold executions, backed by an unshakeable adherence to the highest standards of quality.



Design Architect

Architecture Plus

Architecture Plus specialises in efficient planning and construction friendly detailing along with the unique creativity.



MEP

MAK MEP Consultants

MAK MEP Consultants specialises in providing, energy efficient, sustainable, and innovative engineering design and building solutions.



Structural consultant

Mahimtura Consultants Pvt Ltd.

Mahimtura Consultants Pvt. Ltd. is one of the most respectable companies in the Civil Engineering and Construction Industries.

SUNIL

Ambre & Associates

Liasoning Architect

Sunil Ambre & Associates

Liasoning architect with over 50 years of experience in the industry.



MAN INFRA CONTRACTS LLP

12th Floor, Krushal Commercial Complex, G.M. Road, Chembur (West), Mumbai - 400089

SITE ADDRESS:

Aaradhya EVOQ, Gulmohar Road Number 5, Juhu, Mumbai - 400049



"Aaradhya EVOQ" has been registered by "Man Infra Contracts LLP" ("the Promoter") via MahaRERA registration no. P518XXXXXXXXX the details of which are available on the website <https://maharera.mahaonline.gov.in> under registered projects."

Disclaimer - The amenities, specifications, facilities, surrounding infrastructure, images and features shown and/or mentioned and the image renders used are purely indicative of the envisaged development and for representational purposes only. Photographs of interiors, surroundings or location are digitally enhanced unless otherwise mentioned. Products, features, light fittings, pictures, images, etc. shown as illustrations are for reference only. The colours, shades of walls, tiles etc. shown in the images are for the purpose of representation only and may vary upon actual construction. All dimensions mentioned in the drawings may vary/differ due to construction contingencies and site conditions.