

BOUGAINVILLEA  
KALINA



**RICHA REALTORS**  
1st floor J. V. House, D. B. Babrekar Marg, Dadar (W), Mumbai - 400028. T: 022 24334079.  
[www.richaindia.com/bougainvillea](http://www.richaindia.com/bougainvillea)



The heart  
of the city.  
The soul of the  
woods.





“Your home is invaluable, for its value lies beyond the physical.

Its value lies in the security you feel within its four walls. In the spontaneity of your children’s laughter. In the relaxed state-of-mind that you slip into every time you step into it.

It is with the intent of enabling these, that we build homes. The strength of our construction is balanced by the delicacy of aesthetics, for in the balance lies the making of every day fabulous. We believe that your life at home, should be a collection of extraordinary days. And we strive to add that extraordinariness, into everything that is normally considered ordinary.”

Fabulous Everyday





Bougainvillea is a study in pleasant contradictions.

Located in the heart of the city, minutes away from Bandra, it can be found peering through a mass of trees at the end of a quiet lane. Its unassuming belies its contemporary design. And its interiors are designed in a manner that at once feel spacious and cozy.

Why not visit what could be your future home? Let the sight lift your spirits.

BOUGAINVILLEA

KALINA



**RICHA**

REALTORS

INDIA





## Tranquility

Returning home should be an experience to look forward to.

Quiet moments spent with your family, or even with yourself, after a busy day at work, can be uplifting for the soul.

These silent moments speak volumes. The good news is, that they are not impossible to find. Visit Bougainvillea by Richa and discover the art of living easily and quietly in the heart of the city.

## Greenery

Some of the most precious inhabitants of Mumbai really, are trees. However, they are not a rare breed at Bougainvillea.

Partially hidden by a mass of greenery, the exquisite building is a haven of oxygen and ventillation. Why not pay a visit, and like the poet W.H. Davies said, take your time to “stop and stare”.







## Luxury

It may be a nest amidst nature. But it's one that comes with the most luxurious amenities that any apartment could offer.

Every corner of the apartment, from the switchboards to the sanitary ware is flawlessly designed. With sound-proof and weather-proof windows, motion sensors in the passages and multi-jet showers, your home comes equipped with the best of conveniences.

The meticulous care with which the apartment has been designed, is for you to see and feel.





















BOUGAINVILLEA  
KALINA



### Features & Amenities

Exquisitely designed entrance lobby

Landscaped garden

Multi-level car parking

Motion sensors in the bathrooms and passages

Fire fighting system as per CFO norms

Panic button

Electrical switches with concealed wiring as per ISI norms

Protective toughened glass railing outside window, on external face

CCTV monitoring of common areas

Video door phone with recording to all flats

Gymnasium

Duravit / Kohler sanitary ware

Multi-glazed weather and sound proof windows

Multi-jet shower panel in all master toilets

Toilets in synthetic marble and glazed anti-skid tiles or equivalent

All doors finished with veneer, melamine polish and quality locks

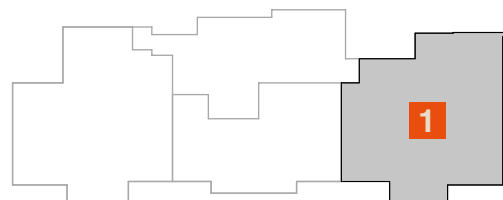
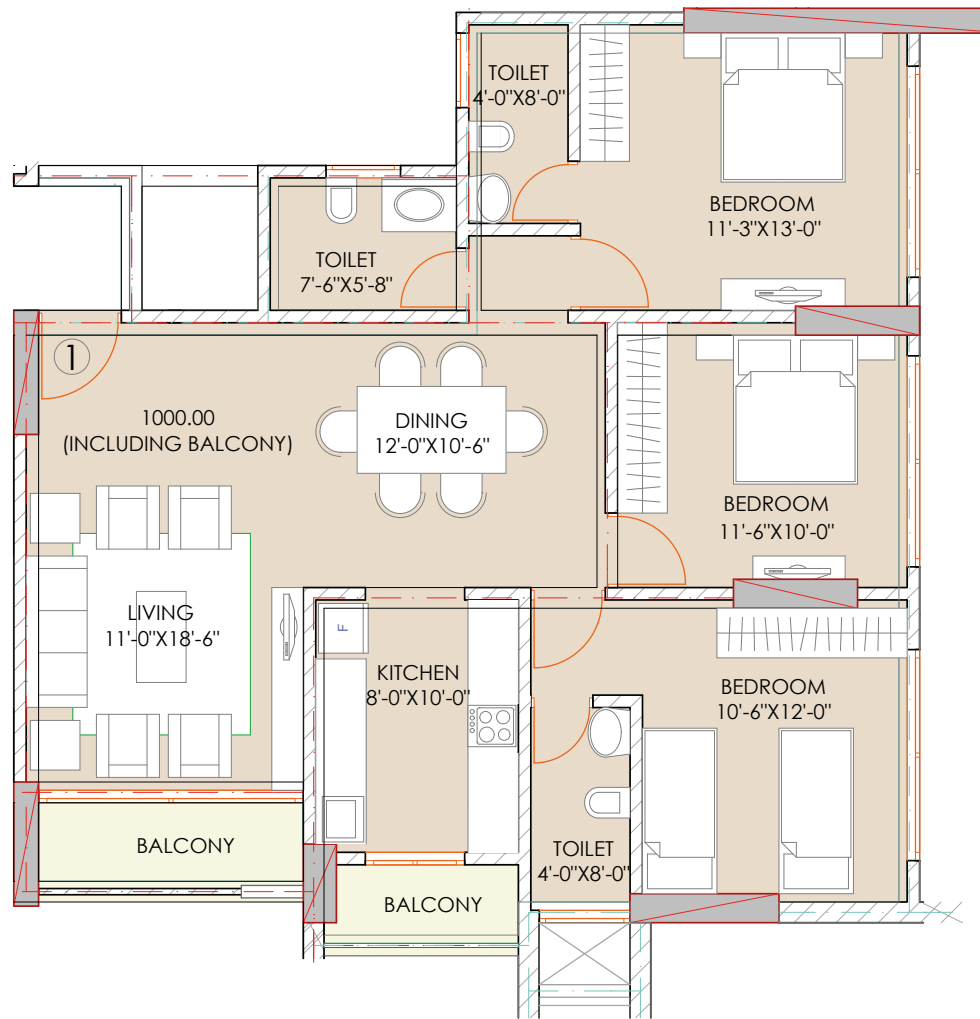
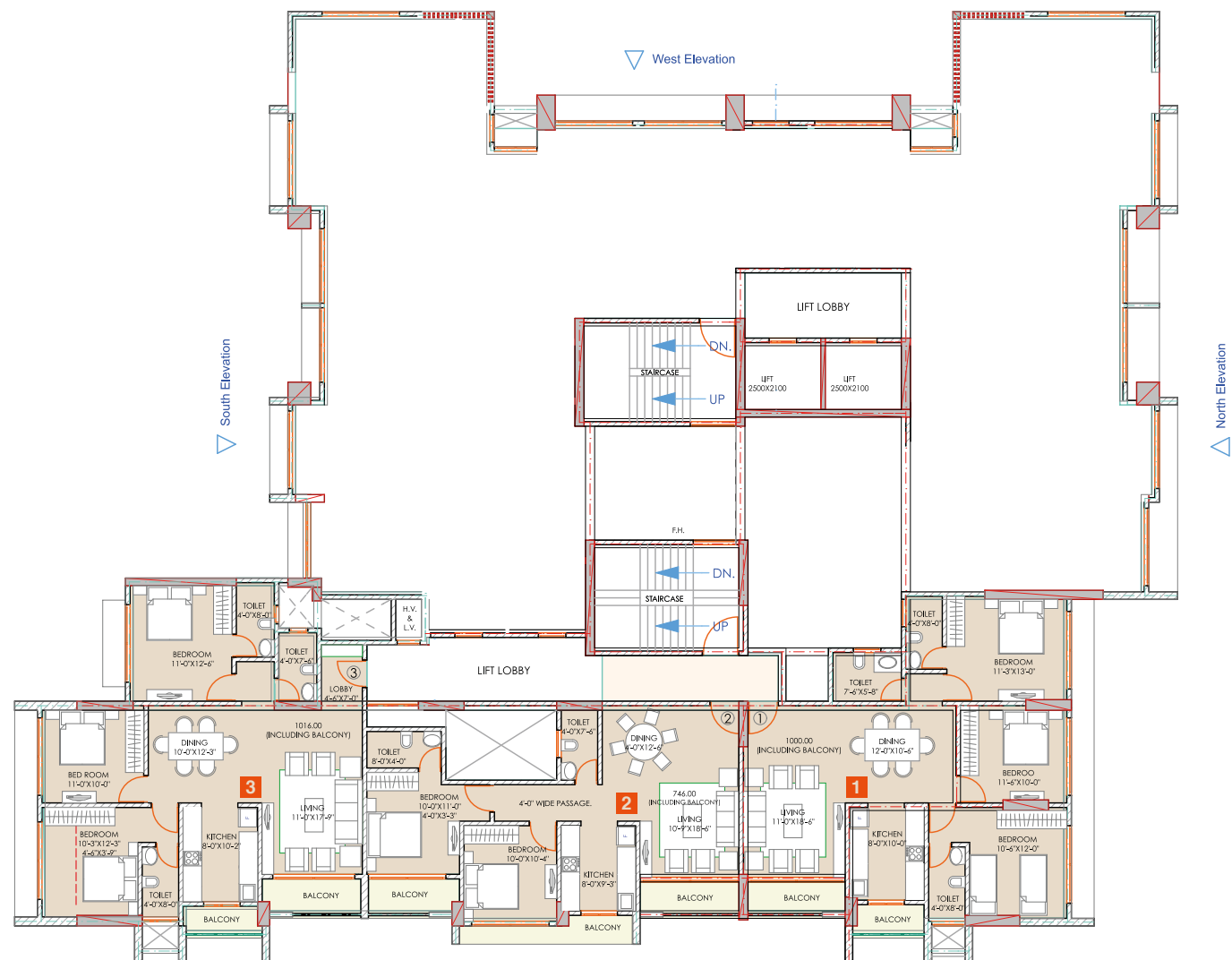
Gessi / Hansgrohe CP fittings in toilets

Synthetic marble or equivalent vitrified flooring in all flats

Plastic paint (Velvet touch) finished internal walls

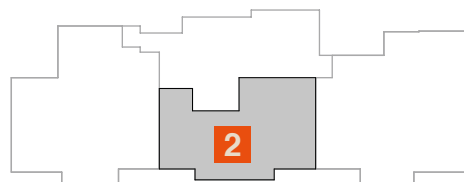
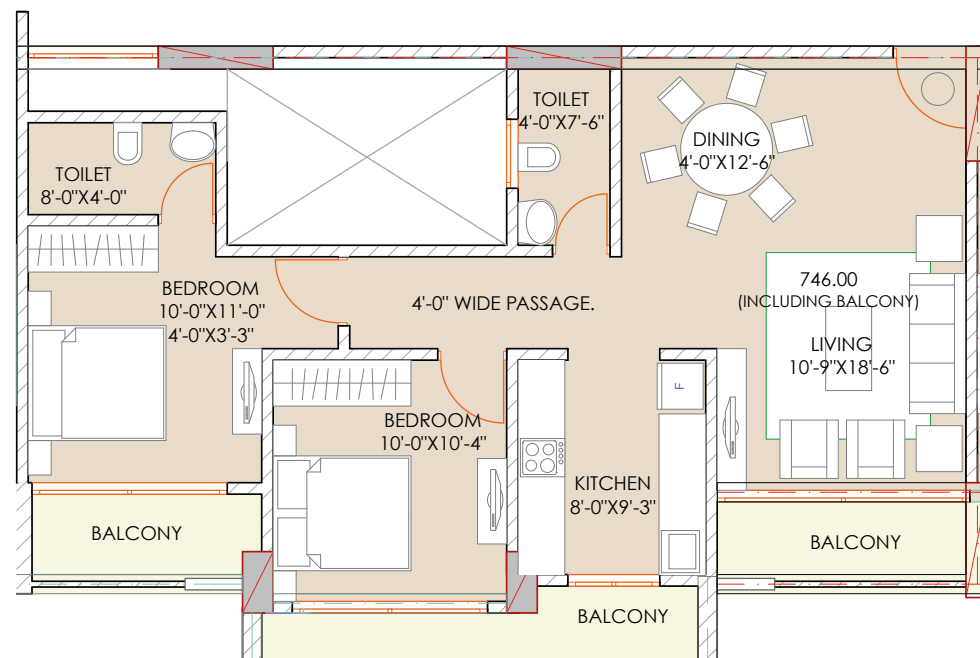
Concealed copper plumbing in all toilets



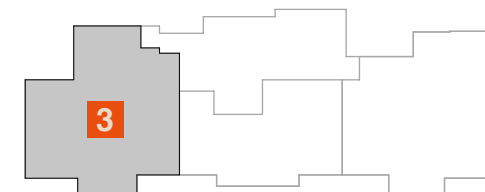
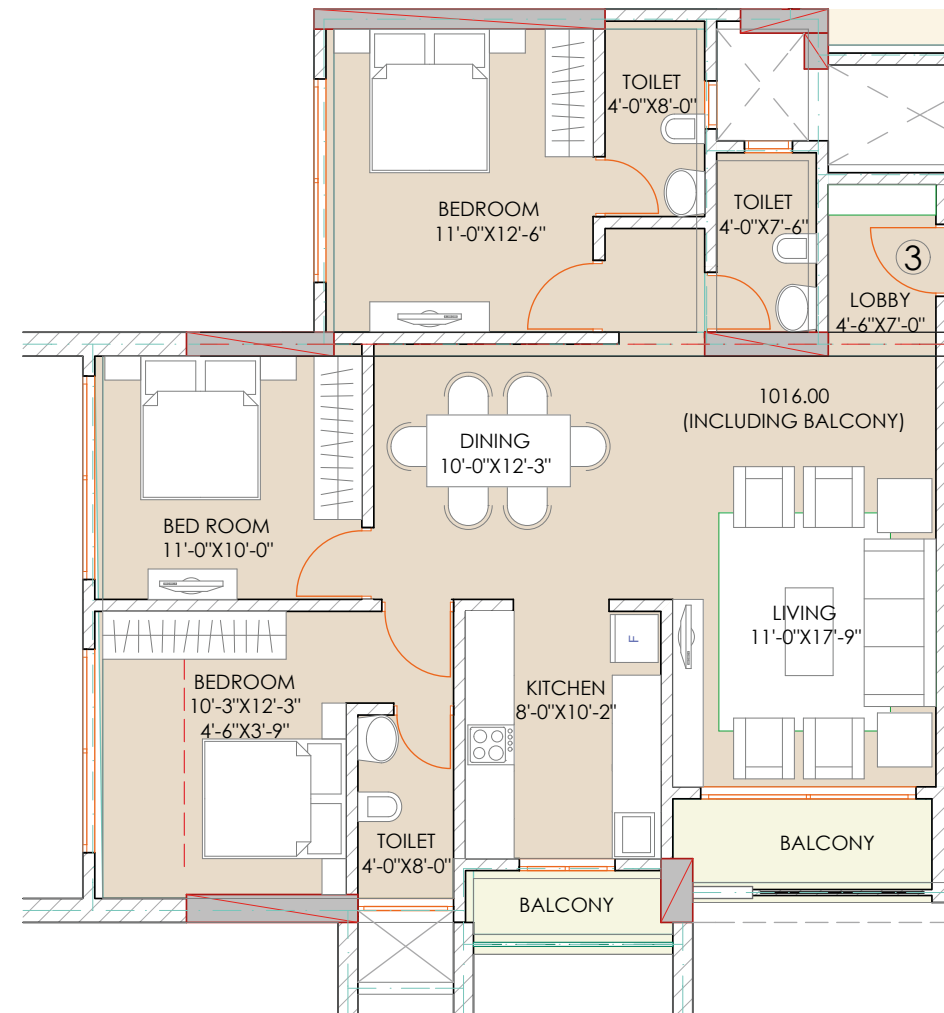


FLAT NO 1 - 1000 Sq.ft





FLAT NO 2 - 746 Sq.ft



FLAT NO 3 - 1016 Sq.ft





BOUGAINVILLEA  
KALINA



Site address: Sunder Nagar, Kalina, Santacruz (E), Village Kolkalyan, Mumbai-400 098.



Nature Maximum

Culture Connect

Three Generations Lens

Total Transparency

Building with Joy



### The Richa difference

A belief is only as good as the expressions that carry it.

At Richa we have a few principles that carry our belief about this business.

These principles define the Richa way of building houses.

They are important because they are the very reasons why people see value in what we do.





“A house is built of walls and beams;

a home is built with love and dreams.”



### **Nature Maximum**

A house is not about creating a place that shuts nature out, but one that lets it in. Our philosophy of ‘Nature Maximum’ helps ensure that every house we build is bright and airy, carefully designed to maximize the entry of sunlight and encourage natural ventilation.

In a world getting increasingly crowded, we recognize the importance of space. We consider every additional square inch to be precious, and go that extra mile to ensure that you get it.

### **Culture Connect**

As cities develop and spread in all directions, what they gain in terms of living space, they lose in terms of character. As buildings get taller, they also get insular.

We build residences that respect and reflect the socio-cultural milieu they take shape in. They add to the inherent charm of the place, amplifying it rather than shying away from it.

We don’t build isolated structures that stand apart, but well-integrated residences that blend in.

### **Three Generations Lens**

It takes more than technical experience and expertise to build the perfect home. With three generations of a family often living under the same roof, it takes understanding and sensitivity.

For the busy working couple, we build comfortable homes they can retreat to, at the end of a tiring day at work.

For the elderly grandparents, our homes are warm, secure havens where they can enjoy the golden years of their lives.

For children, we create a canvas big enough to accommodate the vibrant colours of childhood.

We build residences where families are nurtured, yet individuals find the space to grow

### **Total Transparency**

As anyone who has been through it will vouch for, building a home can be an emotional rollercoaster ride.

Often, the excitement of realizing a cherished dream is outweighed by the uncertainty that has become an inevitable and integral part of the process.

We understand. And we do everything in our capacity to make the process as easy and stress-free as possible.

We give you complete details of the plan and the process to be followed, provide you with timely updates and regularly keep in touch with you during the development phase. Recognizing the importance of honoring time commitments, we strive to stick to the possession schedule.

Building a home, we believe, should be an exhilarating journey. It’s our prerogative to make it a smooth one.

### **Building with Joy**

We know you pictured your home long before we even thought of building it.

We know nobody can feel the anticipation and excitement that you do. Which is why we try to make the whole home buying process a more personal one, by involving you from the very beginning.

We encourage you to visit the site, to be part of the development even before it actually takes shape.

In the process, we ensure that you not only get the home we promised you, but the one you have always promised yourself.





BOUGAINVILLEA  
KALINA



**RICHA**  
REALTORS  
INDIA

For enquiries, further details on the project contact at the toll free number 18003136626  
or email [sales@richaindia.com](mailto:sales@richaindia.com)

The plans are subject to changes / modifications / amendments (without notice) for better layout, as per the suggestions of the Architect and /or as per requirement of the concerned authorities. All the amenities, facilities etc., are subject to the approval of the concerned authorities and subject to the changes, if required. Developer does not warrant or assume any legal liability or responsibility for the accuracy or completeness of any information disclosed.