

SRI BALAJI ENCLAVE

MINDSPACE, MALAD (W)

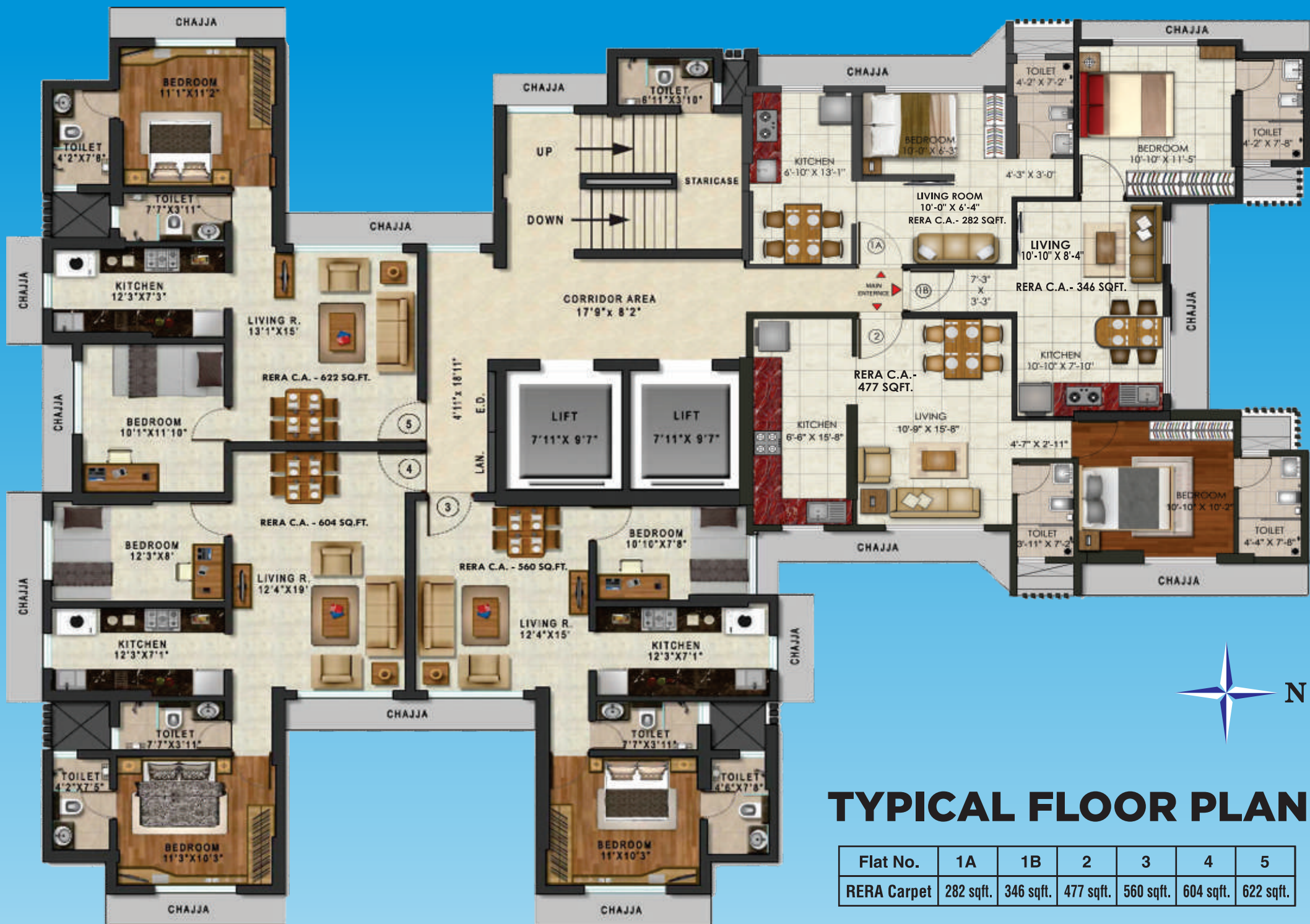
A PROJECT BY ANI ANU DEVELOPERS



RERA NO.: P51800006089

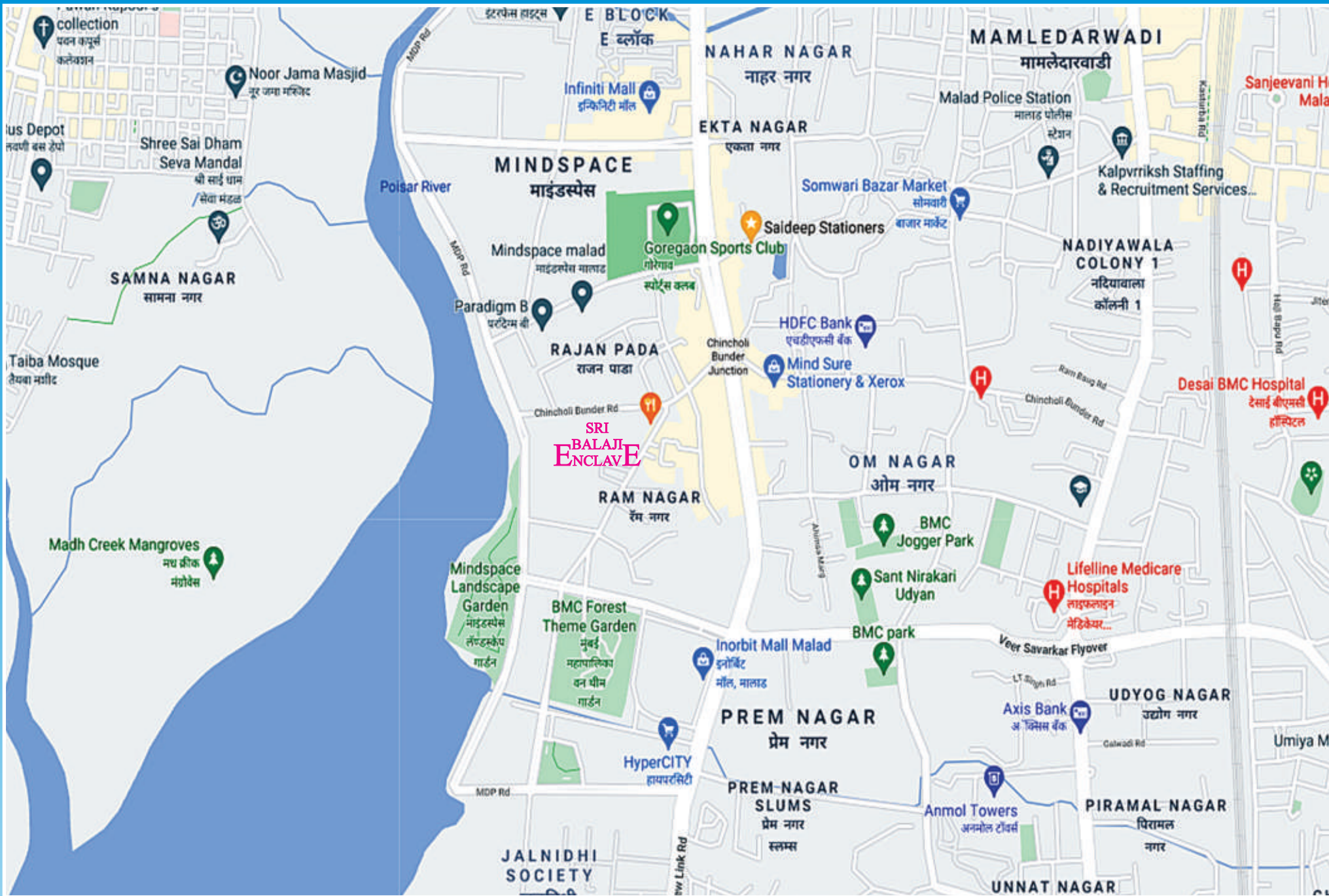
<https://maharera.t.mahaonline.gov.in/searchlist/search?MenuID=1069>





TYPICAL FLOOR PLAN

Flat No.	1A	1B	2	3	4	5
RERA Carpet	282 sqft.	346 sqft.	477 sqft.	560 sqft.	604 sqft.	622 sqft.





A PROJECT BY



ANI ANU DEVELOPERS PVT LTD

A LANDMARK FOR LANDMARKS


Mind Space
Evershine Mall

 12 Minutes
 6 Minutes

Inorbit Mall, Lifestyle,
Shoppers Stop, Hyper City

 10 Minutes
 5 Minutes

Infinity Mall,
D-Mart, Croma

 20 Minutes
 12 Minutes

Malad Station

 20 Minutes
 8 Minutes

Office Add.: 702, Concord CHS, N.S. Road No.10, JVPD, Mumbai - 400049

Site Add.: 1067 A/2, Chincholi Bunder Road Mindspace, Behind Evershine Mall, Malad (West), Mumbai - 400064.

www.shribalajienclave.com | Call : +91-9892268302 / 7021257572 | Email : balajienclavemalad@gmail.com