

# "JYOTSNA HERITAGE"

A  
PROJECT BY



SHREE SAINAMAH HOMES LLP

BUILDER & DEVELOPER

"CRAFTING SPACES TO INSPIRE CREATIVE LIVING"



SHREE SAINAMAH HOMES LLP  
BUILDER & DEVELOPER

## Jyotsna Heritage

"JYOTSNA HERITAGE" is a residential building having splendid beauty, which boasts a unique blend of heritage inspired from the Maratha and Rajasthani art and architecture together. An effort to rejuvenate our traditional roots, this project is an attempt made by re-exploring the indigenous patrimony. Standing firm as an example of ethnicity for the generations to come.

All residential units are designed on the basis of climatic design principle. This induces more admission of daylight and air as the units face East, West and North direction only. Utilisation of natural resources helps in reduction of building energy usage, felicitating more comfort and ease of living.

"JYOTSNA HERITAGE" offers you, 1, 2 & 3 BHK apartment at Maratha colony road at Dahisar (East), Mumbai; which is one of the good locality. The unobstructed designs would greet you blissfully right from the movement you enter in a building, you will enjoy the perks of living.

The premises is equipped with a stunning outdoor garden in its backyard. The greenery is surely a feast for an eye, while it can also be used as an internal community space. Acting as a haven of tranquillity, this is an escape from the busy fast pace life of the residents.

The location of the building has an advantage as it provides unmatched availability of all vital areas of basic necessities such as schools, hospital, theatre, hotels etc. There's also easy access for transportation to other parts of the city due to the presence of wide roads, railway and metro rail.

Come forth! Experience the heritage manifold.





SHREE SAINAMAH HOMES LLP  
BUILDER & DEVELOPER

## Jyotsna Heritage

The City night makes JYOTSNA HERITAGE beautiful & alive. The shimmering lights shine, enhancing the arched features of the building as the starry sky sweeps over the city that never sleeps.







SHREE SAINAMAH HOMES LLP  
BUILDER & DEVELOPER

**1 BHK (Crafty)  
RERA C.A. - 353 Sq.ft.**



**2 BHK (Apparent)  
RERA C.A. - 504 Sq.ft.**





SHREE SAINAMAH HOMES LLP  
BUILDER & DEVELOPER



2 BHK (Splender)  
RERA C.A. - 574 Sq.ft.





SHREE SAINAMAH HOMES LLP  
BUILDER & DEVELOPER



## Living room

Where family moments  
to Love and Chat

## Master Bedroom

Your favorite relax zone  
after day's hectic





SHREE SAINAMAH HOMES LLP  
BUILDER & DEVELOPER

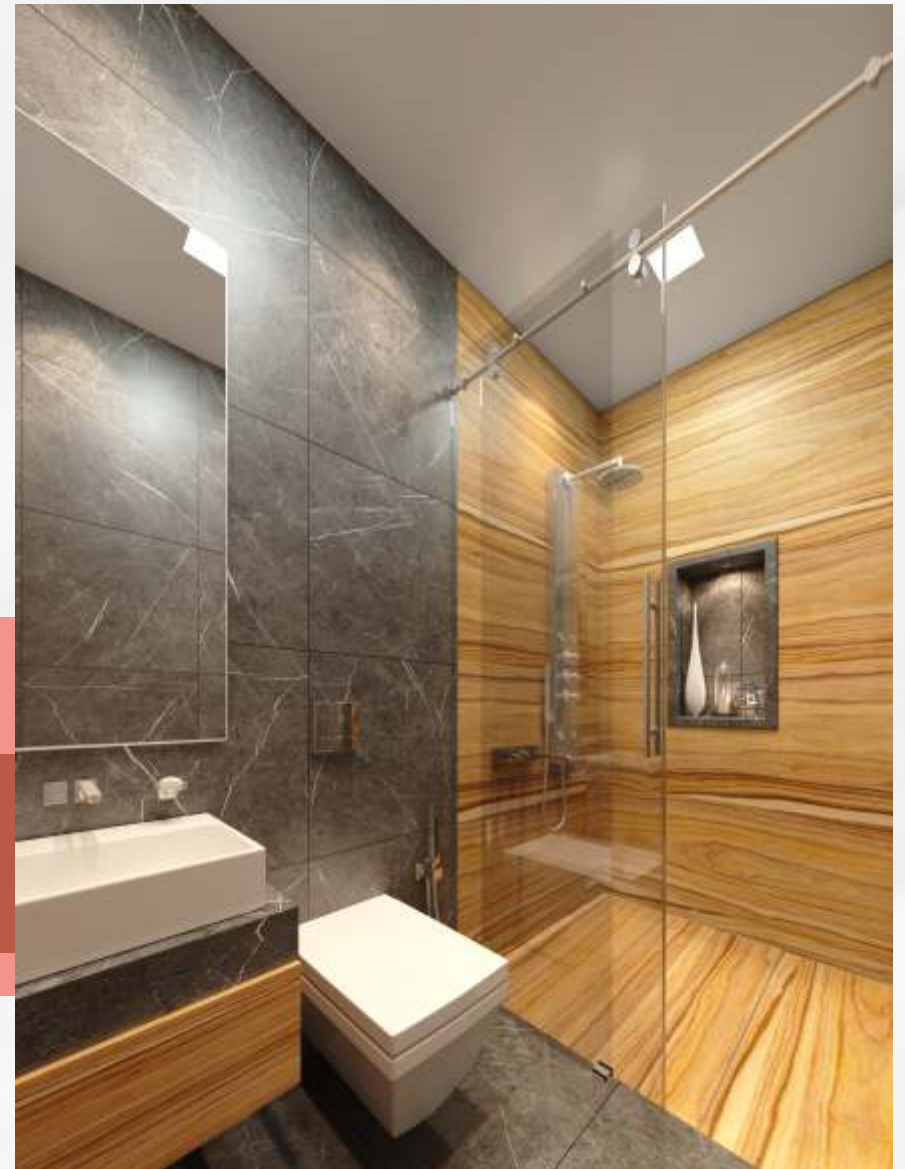
## Kitchen

Designed for Home  
made Happiness



## Bathroom

Wash your body for  
purification and Rejuvenation







## Designer Entrance Lobby with High Ceiling

The Designer entrance lobby gives first impressions a whole new meaning.



SHREE SAINAMAH HOMES LLP  
BUILDER & DEVELOPER

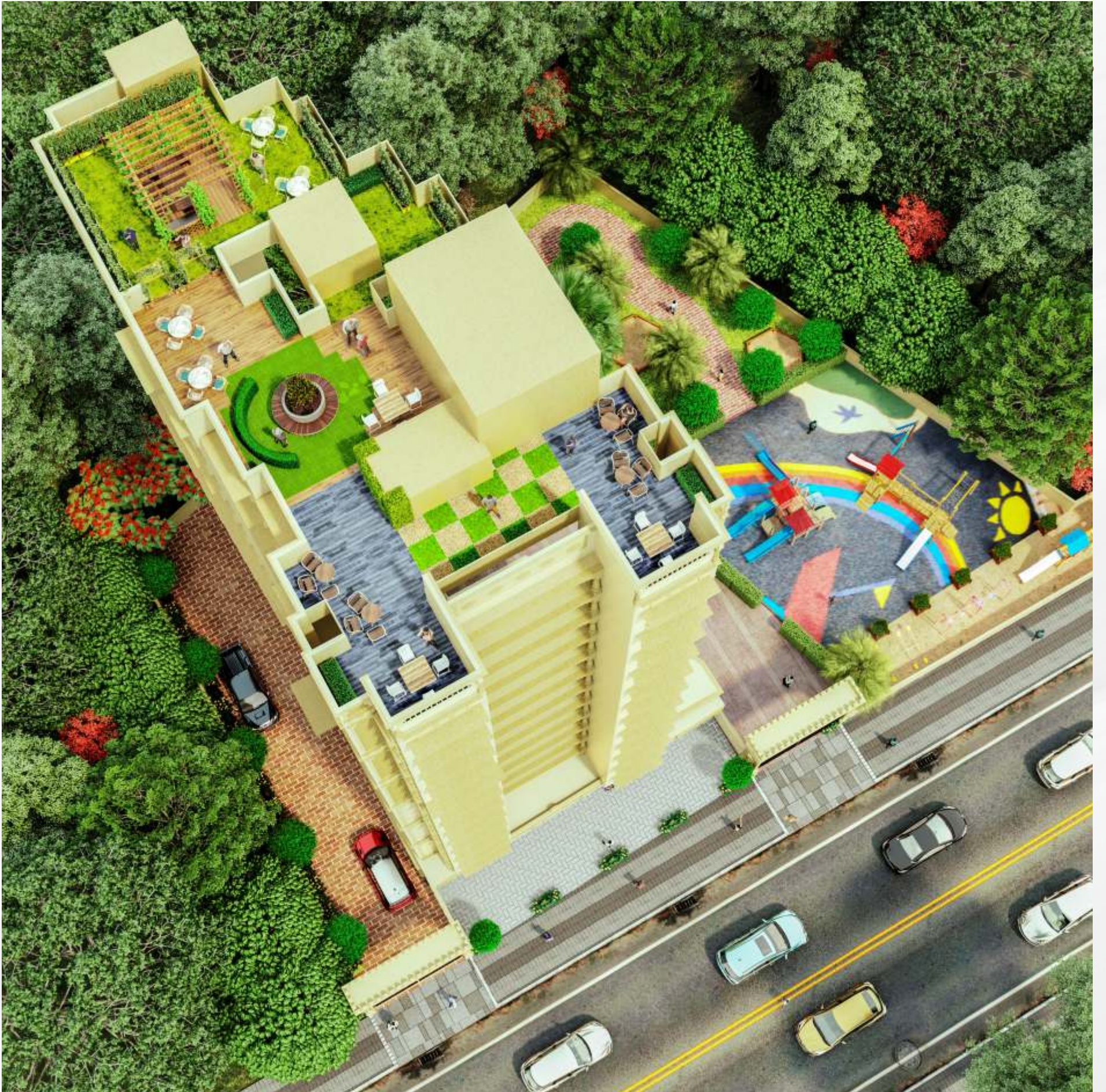
## Mini Landscaping Garden in Backyard

The greenery is surely a  
feast for an eye.



## Gym / Fitness Centre (Optional)







SHREE SAINAMAH HOMES LLP  
BUILDER & DEVELOPER

## Automated Multilevel Mechanized Car Parking System.





SHREE SAINAMAH HOMES LLP  
BUILDER & DEVELOPER

# Amenities

## Common Amenities

- Designer Entrance Lobby with High Ceiling
- CCTV in Selected Common Areas
- Children's Play Area
- Fitness Centre (Optional)
- Branded High Speed Elevators
- Firefighting system
- Mini Landscaping- Garden in Backyard
- Automated multilevel mechanized car parking system
- Rain water harvesting system with Bore well for alternate water support
- Society office
- Common Washroom at stilt

## Apartment's Amenities

- Branded Vitrified flooring for living, dining, kitchen and all bedrooms
- Branded ceramic tiles for bathroom flooring and dado
- Branded ceramic tiles dado 4 feet high above kitchen platform
- Kitchen Granite platform with stainless steel sink
- Aluminium Powder coted windows
- Concealed plumbing
- Branded C.P. & Sanitary fittings
- Branded electrical switches & wires
- Laminated flush doors
- Intercom system in every flats

## Almost everything close to JYOTSNA HERITAGE

The location of a building having has an advantage due to close proximity and easy access to rail, Metro Station, Road, and connectivity to religious centre, health care centre and BMC garden-park.

### Education



Swami Vivekanand School	: 600 mt.
St. Mary's High School	: 800 mt.
Poorna Prajna Education Centre	: 400 mt.
Sardar Patel Vidyalaya, Jr. College	: 400 mt.

### Lifestyles



Ravindra Hotel	: Adjacent to building
Hotel Ram-Krishna	: 150 mt.
Movie time	: Opp. to building
Dahisar Sports Foundation	: 850 mt.
Jari mari BMC Park	: 400 mt.
Celebration by Veg treat	: 500 mt.
Domino's Pizza	: 170 mt.

### Healthcare



Life Care Hospital	: 100 mt.
Sanjivani Hospital	: 100 mt.
Navneet Hitech Hospital	: 100 mt.

### Approx. Connectivity



Railway Station	: 5 min. walk
Western Express Highway	: 10 min. walk
S.V. Road	: 2 min. walk
H.P. Petrol Pump	: 5 min. drive
Dahisar Metro Station	: 10 min. walk
Anand Nagar Metro Station	: 5 min. drive

### Religious Places:



Shree Sambhavnath Jain Derasar	: 100 mt.
Bhataladevi Temple	: 350 mt.
Swami Narayan Temple	: 350 mt.
Shree Nathji Haveli	: 600 mt.
Sumatinath Jain Temple	: 700 mt.





# SHREE SAINAMAH HOMES LLP

BUILDER & DEVELOPER

## Reg. Office

Office No. 1, 1st Floor, Sun & Moon CHS Ltd., Bldg. No. 13, Rajendra Nagar, Dattapada Road, Opp. Bank of Maharashtra, Borivali (East), Mumbai - 400 066.

 022-40108260 / 08591522461  shreesainamahhomesllp@gmail.com



## Site Address

Jyotsna Heritage, CTS no. 1069, Maratha Colony Road, Near Ravindra Hotel, Opp. Movie Time, Off S.V. Road, Dahisar (E), Mumbai: 400068.

## Architect

### M/s CREATIVE CONSULTANTS & DESIGNERS


Rajendra Nagar, Borivali (East), Mumbai - 400 066.

 officecreativeconsultant@gmail.com  www.creativeconsultantsdesign.in

## RCC Consultant

### M/s UNISTEPS CONSULTING PVT. LTD.

Row House # 4, Dheeraj Savera, Opp. Siddharth Nagar, Borivali-East, Mumbai-400066

 mail@unistepspl.com