



RIQUEZA  
**SIRI**

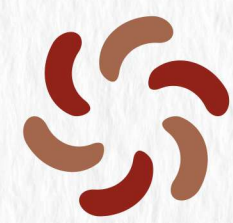
# APARTMENTS FOR ENRICHED LIFE



RERA: PRM/KA/RERA/1250/304/PR/070823/006119

A PREMIUM RESIDENTIAL GATED COMMUNITY  
**LOCATED @ HOSKOTE, BENGALURU**





RIQUEZA  
**SIRI**

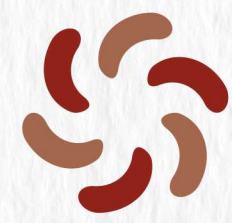
128 Residential 2BHK & 3BHK Units  
RERA Registered  
1-Stilt & 4 Upper floors  
BMRDA Approved  
CC / OC Project

**CONFIGURATION**

Seismic Resistant Design  
Right in the Heart of the City  
Out & Indoor Games  
Lavish Landscape Design







# RIQUEZA SIRI

The *Riqueza Siri* is an opportunity for a rich future of one's life. *Riqueza Siri* is situated in the fastest growing residential hub of Hoskote town and very close proximity to all life needs. It is on the bang of the existing 60 and 80 feet road junction. *Riqueza Siri* offers a harmonious blend of luxury, convenience and contemporary living. Whether you are a young professional seeking a vibrant urban lifestyle or a family looking for a comfortable and stylish home, this apartment complex provides an exceptional living experience in the heart of the city. It is thoughtfully designed and carefully crafted to maximize airy open living space, plenty of natural sunlight and an eco-conscious lifestyle while maintaining functionality and aesthetics.

CITY ON  
YOUR DOOR STEP





RIQUEZA  
**SIRI**

2&3 BHK Ultra Luxury  
Living Apartment

Premium Gated Community Living

Vastu Compliant

Excellent Ventilation

Excellent Location & Connectivity

PROJECT  
HIGHLIGHTS

Utilitarian Design for  
Space Optimization

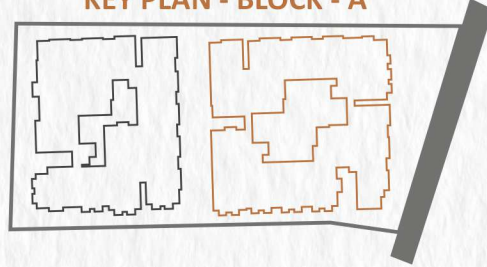
Premium Quality Constructions

Fast Growing Residential Area

Finest Architectural Design

OFFERING A NEW LEVEL OF UNCOMPROMISING INDULGENCE FOR A SELECT FEW LIKE YOU WHO ACCEPT NOTHING LESS THAN PERFECTION. THE PERFECT EXAMPLE OF A WORLD-CLASS GATED COMMUNITY *RIQUEZA SIRI* IS THE FLAGSHIP PROJECT PLUSH WITH AMENITIES AND THE BEST LUXURY POSSIBLE. AN IDEAL COMMUNITY IN THE MIDDLE OF IT ALL.

KEY PLAN - BLOCK - A



F NO: 24 1125 SFT  
EAST 2 BHK

F NO: 27 3 BHK  
1250 SFT EAST

TYPICAL FLOOR PLAN -  
BLOCK - A - AREA STATEMENT IN SFT



F NO	16	17	18	19	20	21	22	23	24	25	26	27	28	29	30	31	32
SBA	1190	1145	1060	1060	1345	1125	1100	1050	1125	1135	1330	1250	1250	1380	1160	1170	1125
TYPE	2BHK	2BHK	2BHK	2BHK	3BHK	2BHK	2BHK	2BHK	2BHK	2BHK	3BHK	3BHK	3BHK	3BHK	2BHK	2BHK	2BHK
FACING	NORTH	NORTH	NORTH	NORTH	NORTH	NORTH	NORTH	NORTH	EAST	NORTH	EAST	EAST	EAST	EAST	WEST	EAST	EAST









# BE FIT - LIVE HEALTHY



## TAKING YOUR OUTDOOR LIFE TO THE NEXT LEVEL

THE OUTDOOR IS FOR EVERYBODY. YOUR PARENTS NEED ACTIVITY IN THEIR GOLDEN YEARS. YOUR CHILDREN NEED TO ENGAGE IN SPORTS FOR PHYSICAL FITNESS AND HOLISTIC GROWTH. YOU AND YOUR SPOUSE NEED TO GET OUT OF THE APARTMENT AND MEET THE WORLD OUTSIDE. SO WELCOME TO SHUTTLE COURTS, JOGGING TRACK AND PLAY AREAS. BEST OF ALL, QUIET SEATING SPACES FOR THE ELDERLY SUCH A BEAUTIFUL WORLD!



Outdoor Party Space



Yoga Lawns



Meditation Zone



Modern Club House



Badminton Court



Decked Out Door Gym



Elder Seating Parks



Walking & Jogging Track

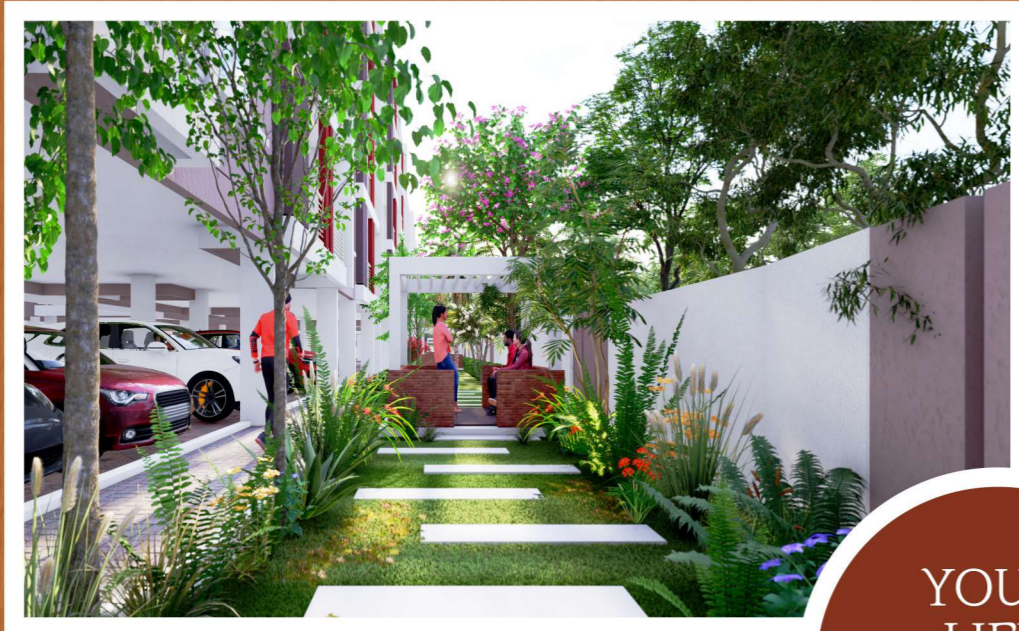


Children's Play Area



**25+**  
PREMIUM AMENITIES





YOUR  
LIFE  
YOUR  
STORY



Half Basketball  
Court



Modern  
Gym



Landscape  
Gardens



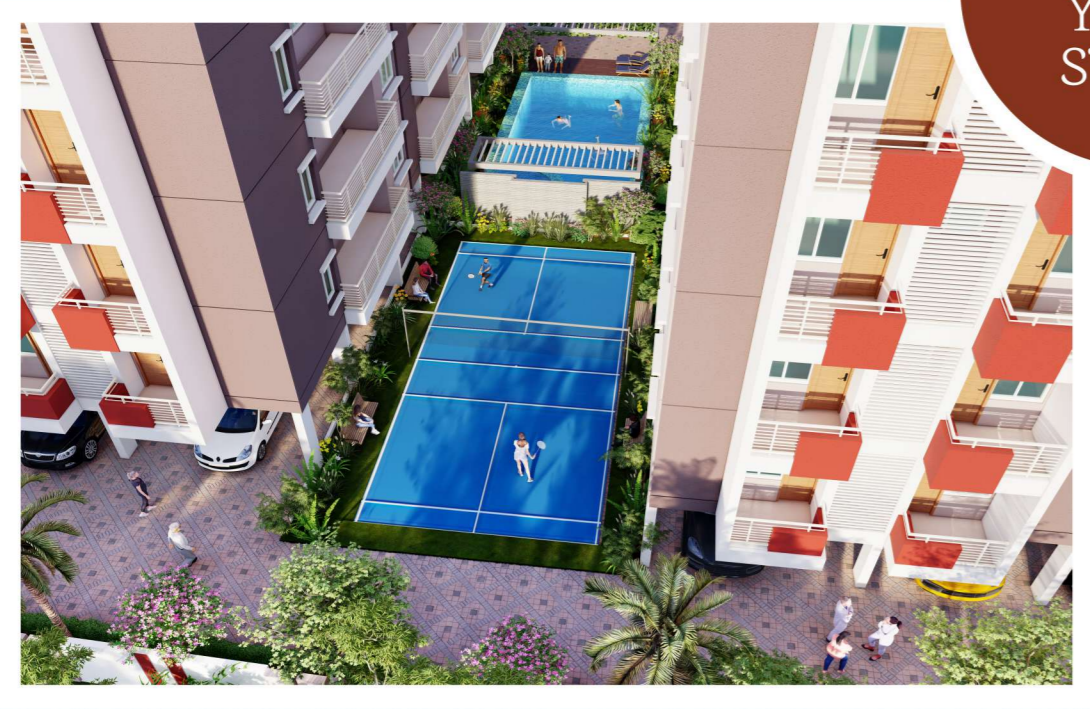
Indoor  
Party Hall



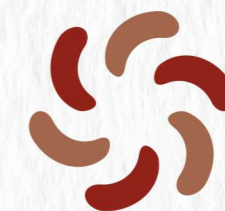
Swimming pool  
& Kids Pool



Multipurpose  
Hall



LIVE AN ENVIABLE  
LIFE BEYOND COMPARISON



RIQUEZA  
SIRI

A trail all set to seek the meaning of rejuvenate and refreshed life, *Riqueza Siri* will recharge your life every day with existing and energetic set of sports amenities like Kids play area, swimming pool, Badminton Court etc. *Riqueza Siri* is a place that will help you to bond with your family like never before.



#### STRUCTURE:

Earthquake protected RCC column framed structure.

#### WINDOWS:

Three track UPVC Window frames and glass shutters along with mosquitoes mesh.

#### WALLS:

6" Solid concrete blocks for external and 4" Solid concrete blocks for internal walls.



#### DOORS:

MAIN DOOR: Teak wood frame and Veneered Flush Door, polish finish with fittings.

OTHER DOORS: Sal wood frames and flush doors with Powder coated aluminum fittings.

#### PLASTERING:

Sponge finish for external walls and lime finish for internal walls.

#### FLOORING:

Vitrified tiles in living hall, dining and other rooms and anti skid tiles in toilets, utilities and balconies.

#### KITCHEN PLATFORM:

Polished granite stone platform with stainless steel sink, glazed tiles dado upto 2 feet height above platform. Provision for aquagaurd.

#### TOILETS:

Glazed tiles dado upto 7 Feet in toilets will be provided. Provision for geyser in all toilets, sanitary ware with well accepted brands will provided

#### PAINTING:

Tractor Emulsion paints for internal walls, and external walls, Ace for ducts and enamel paint for doors

## SPECIFICATIONS



#### WATER SUPPLY:

Adequate borewell water supply.

#### LIFT:

4 Nos of 8 Passenger Automatic lifts with well accepted brands.

#### STAIRCASE AND CORRIDORS:

Granite Flooring.

#### GENERATOR:

Stand by noise less generator for lifts, pumps, common area lighting and power backup to each flat during power failure.

#### ELECTRICAL WORK:

Concealed copper wiring and electrification with adequate light & fan points in all rooms, T.V Points in hall and master bedroom of anchor riders modular switches or well accepted brands will be provided. Switch and socket for fridge, Washing Machine, Microwave Oven, Exhaust Fan, Mixer, Geyser and A.C Point provision in master bedrooms will be provided. MCB for safety.

## REPUTATION AWARDS, BETTER TOGETHER

Affordability and excellence are just some of the factors that we rely on to deliver world class homes. Established and managed by people with decades of experience in designing, developing and delivering homes par excellence. Riqueza Estates has earned the enviable reputation as a quality property developer. We believe a house is not just a place to live in, but an expression for excellence and modernization. Apart from meeting the evolving lifestyle of urban families, all our projects have also demonstrated excellent growth in value, thus giving buyers the twin advantages of proud address and a good investment. Its no surprise then that all of Riqueza Estates projects till date have received overwhelming appreciation, a fact that any of its long list of happy buyers.



Riqueza Laughing Earth



Riqueza Barbie



Elegance



Shobha Meadows



Pearl



Lake View

OUR MILESTONE PROJECTS





## Location Map (Not to Scale)



### SCHOOLS

+ Fatima English High School	: 300 mtrs
+ Eqube International School	: 1 kms
+ Sri Vivekananda Vidya Kendra	: 1 kms
+ New Horizon School	: 1 kms
+ Om Shree Public School	: 1.2 kms
+ Govt PUC, Degree, and PG collage	: 2 kms
+ Citizens' English School	: 2 kms
+ The Polaris International School	: 2.5 kms
+ Bharath Matha School	: 2.5 kms
+ VIBGYOR High School	: 4 kms
+ Capstone High CBSE School	: 4 kms
+ Narayana Olympiad School	: 4.5 kms
+ National Public School	: 5 kms
+ Winmore Academy	: 5 kms
+ New Baldwin INT School	: 5 kms
+ Chrysalis High	: 6.5 kms
+ Delhi Public School	: 7 kms
+ Sharanya Narayani Int. School	: 8 kms

### HEALTH CENTERS

+ MVJ Medical College and Hospital	: 1 km
+ Srinivasa Hospital	: 2 kms
+ Ashwini Hospital	: 2 kms
+ Chaitanya Medical Center	: 2 kms
+ Silicon City Hospital	: 2 kms
+ Mission hospital	: 2.5 kms
+ Ovum Woman & Child Hospital	: 3 kms
+ Kempanna Hospital	: 3 kms
+ Globe Eye Foundation	: 3.5 kms

### OTHER IMPORTANT PLACES

+ M D P Coffee House	: 500 mtrs	+ Sai Baba Ashram	: 9 kms	+ Marathahalli Junction	: 17 kms
+ Hoskote Junction	: 1 kms	+ Whitefield Metro Station	: 9 kms	+ Narasapura	: 19 kms
+ Orion Mall	: 3 kms	+ ITPL	: 12 kms	+ Vemgal Industrial Area	: 19 kms
+ Brigade Orion Mall	: 3 kms	+ Forum Value Mall	: 12 kms	+ Bengaluru International Airport	: 20 kms
+ Safal Market	: 5 kms	+ KR Puram Railway Station	: 12 kms		
+ Hoskote KIADB Insutrial Area	: 6 kms	+ Baiyappanahalli Metro Station	: 15 kms		



#### Office Address

**Riqueza Estates Pvt Ltd**  
3rd floor, H.R.K Complex,  
Above HDFC Bank, K.R. Road,  
Hoskote - 562 114.

#### Site Address

**Riqueza Siri**  
Khata No. 15373/154/3/5/6/7/8/9,  
Kannurahalli Main Road,  
Kasaba Hobli, Hoskote Taluk,  
Bengaluru Rural District - 562 114.

More details  
for booking

+91 8747 8888 11 / 22

sales@riquezaestates.com www.riquezaestates.com



Scan me  
for Location

#### Architect

**Sathishbabu Associates**  
HAL Airport, Bengaluru.  
E: sathishbabuassociates@gmail.com  
M: +91-9986030139

#### Legal Advisor

**Prashanth Vijayalakshmi & Associates**  
Bengaluru - 560 043.