



AMENITIES

HEALTH

- Swimming Pools
- Gymnasium
- Yoga Centre
- Meditation Place
- Jogging Track

ENTERTAINMENT

- Clubhouse
- Card Room
- Amphitheatre
- Library
- Kids' Zone
- Multipurpose Function Lawns

NATURE & LANDSCAPE

- Landscaped Gardens
- Fountains
- Meandering Eco Gardens
- Roadside Trees
- Large Water Bodies
- Sculptures & Statues
- Maze Gardens
- Garden Walkway
- Dense Perimeter Landscape

SPORTS

- Table Tennis
- Snooker
- Cricket Nets
- Basketball
- Tennis

CONVENIENCE

- Community Hall

ECO-FRIENDLY SYSTEMS

- Sewage Treatment
- Water Harvesting
- Water Purification

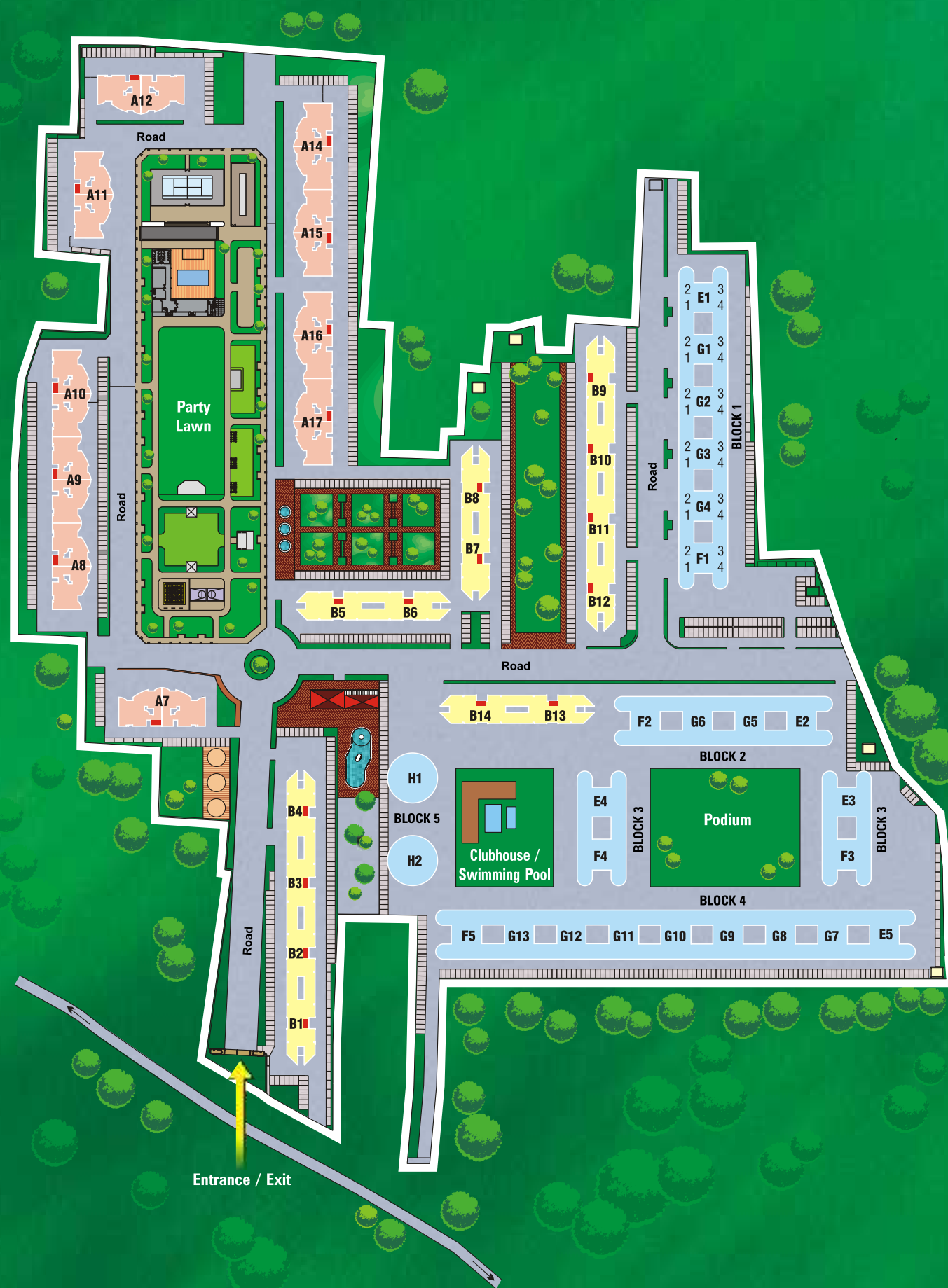
SECURITY & SAFETY

- Intercom Connectivity
- Power Backup for Lifts and Common Areas

ADD-ON VALUE

- Pedestrian Spines
- Wider Roads

PROJECT LAYOUT



Site : S. No. 214, 220, 221, Opp. Shiv Shankar Mangal Karyalaya, Phursungi Village, Tal. Haveli, Dist. Pune.

SPECIFICATIONS



ENTRANCE LOBBY

- Imported tiles flooring and ceiling with decorative lights in main entrance lobby of every building.
- Security point per lobby with intercom connectivity to every apartment, main gate and important common areas.
- Designer name plate directory.
- Letter box for each apartment.



FLOORING

- Designer 600 x 600 granamite flooring for living room, dining room and internal lobby areas.
- Anti-skid flooring for terraces.



KITCHEN

- Kitchen platform with jet black granite top.
- Designer kitchen dado wall tiles up to 1'6" height.
- High quality chrome-plated brass taps.
- Concealed plumbing with premium quality pipes.
- Plumbing point provisions for water purifier, washing machine/dryer.
- Provision for exhaust fan and washing machine.



BATHROOMS

- A combination of designer tiles for bathrooms.
- White/coloured sanitary bathware.
- Single lever diverter with hot and cold mixing unit for bathrooms.
- Provision for exhaust fan in all bathrooms.
- Provision for fitting boiler/geyser in all bathrooms.
- Concealed plumbing with premium quality pipes.
- Water-resistant doors.



DOORS & WINDOWS

- Powder-coated aluminium sliding windows with mosquito net and grill.
- Main door with designer skin panel.



ELECTRICALS

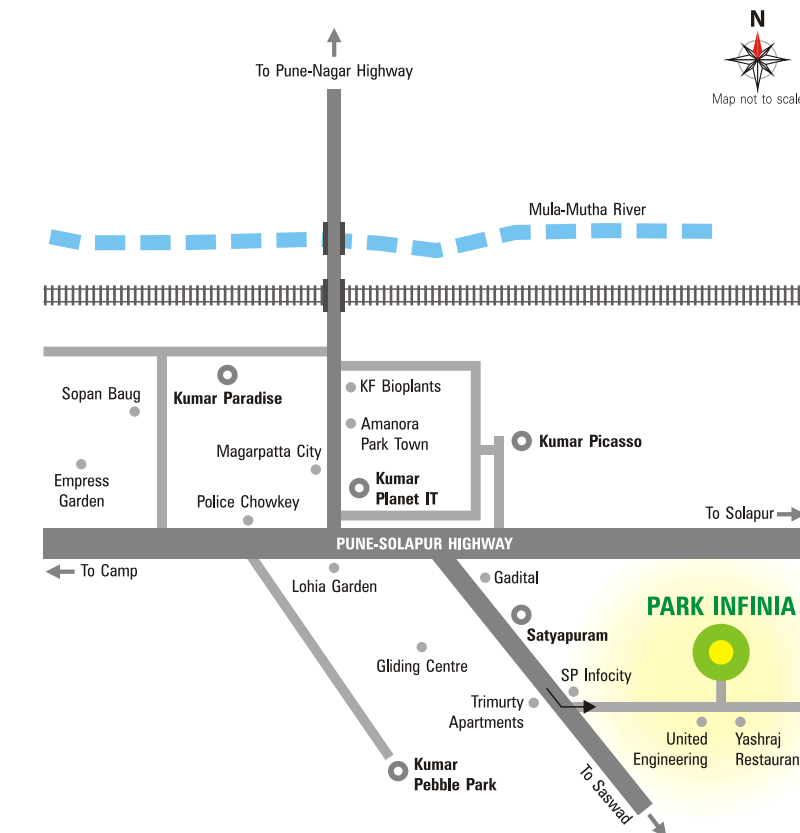
- Concealed electrical copper wiring with circuit breakers.
- Earth leakage circuit breakers in main electrical panel.
- A.C. points in each room.
- Adequate electrical points in each room.
- Premium quality switches in all rooms.
- Provision for cable, telephone, intercom.



VALUE ADDITIONS

- Fire-fighting systems for every building.
- Superior internal OBD wall finish.
- Superior washable cement paint for external walls.
- Automatic passenger elevators.
- Wide stairways.

LOCATION



Architects

Farhad T. Khareghat

RCC Consultants

Sunil Mutalik

Landscape Design

Shobha Bhopatkar

Developers

Kumar Properties & Real Estate Pvt. Ltd.



BUILDING TRUST & RELIABILITY SINCE 1966

Corporate Office - Pune : Kumar Capital, 2413, East Street, Camp, Pune - 411 001, India. Tel : +91-20-3052 8888, 3058 3661/62 Fax : 2635 3365

Mumbai : 21, Hazarimal Somani Marg, Waudby Road, Opp. Bombay Gymkhana, Fort, Mumbai - 400 001, India. Tel : +91-22-2209 4876, 2209 4797 Fax : 2209 4796

Bengaluru : No. 33, Crescent Road, High Grounds, Opp. Taj West End Hotel - Back Gate, Bengaluru - 560 001, India. Tel : +91-80-4128 0992

Sales Enquiry : 9595 110011, 9595 660066, 9595 770077

E-mail : sales@kumarworld.com Website : www.kumarworld.com

www.parkinfinia.co.in

This brochure is purely conceptual and not a legal offering. All images given are only for visual reference. The company reserves the right to add, delete or alter any details/specifications/layout/floor plans/elevations/amenities/facilities in its endeavour to make improvements as and when required.

Where your mind sings
the tune of Nature!



park infinia

A park you'll call home

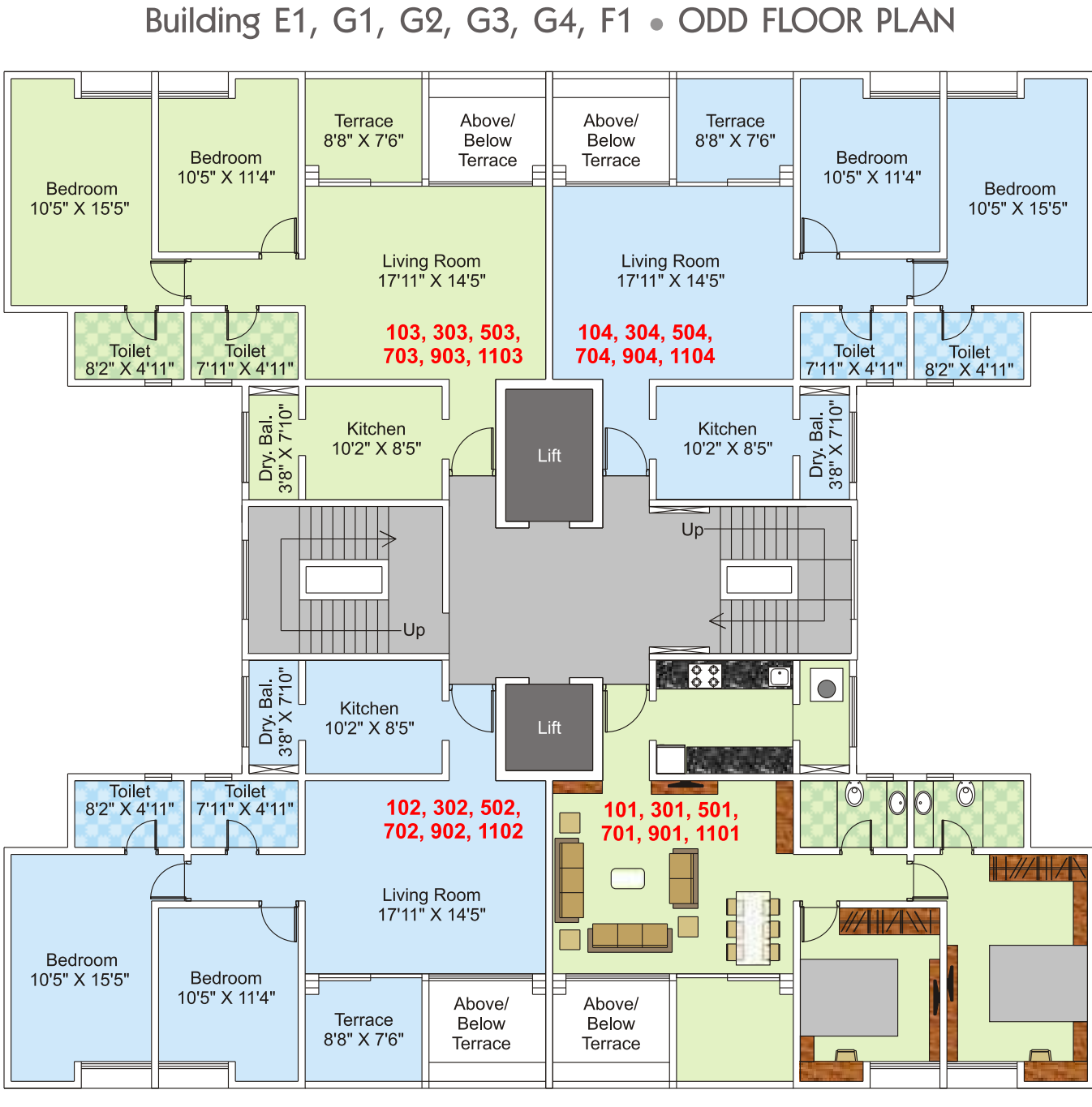


Spread across lush green 41-acres, Park Infinia is a garden township where you will experience the harmonious blend of Nature and modern amenities.

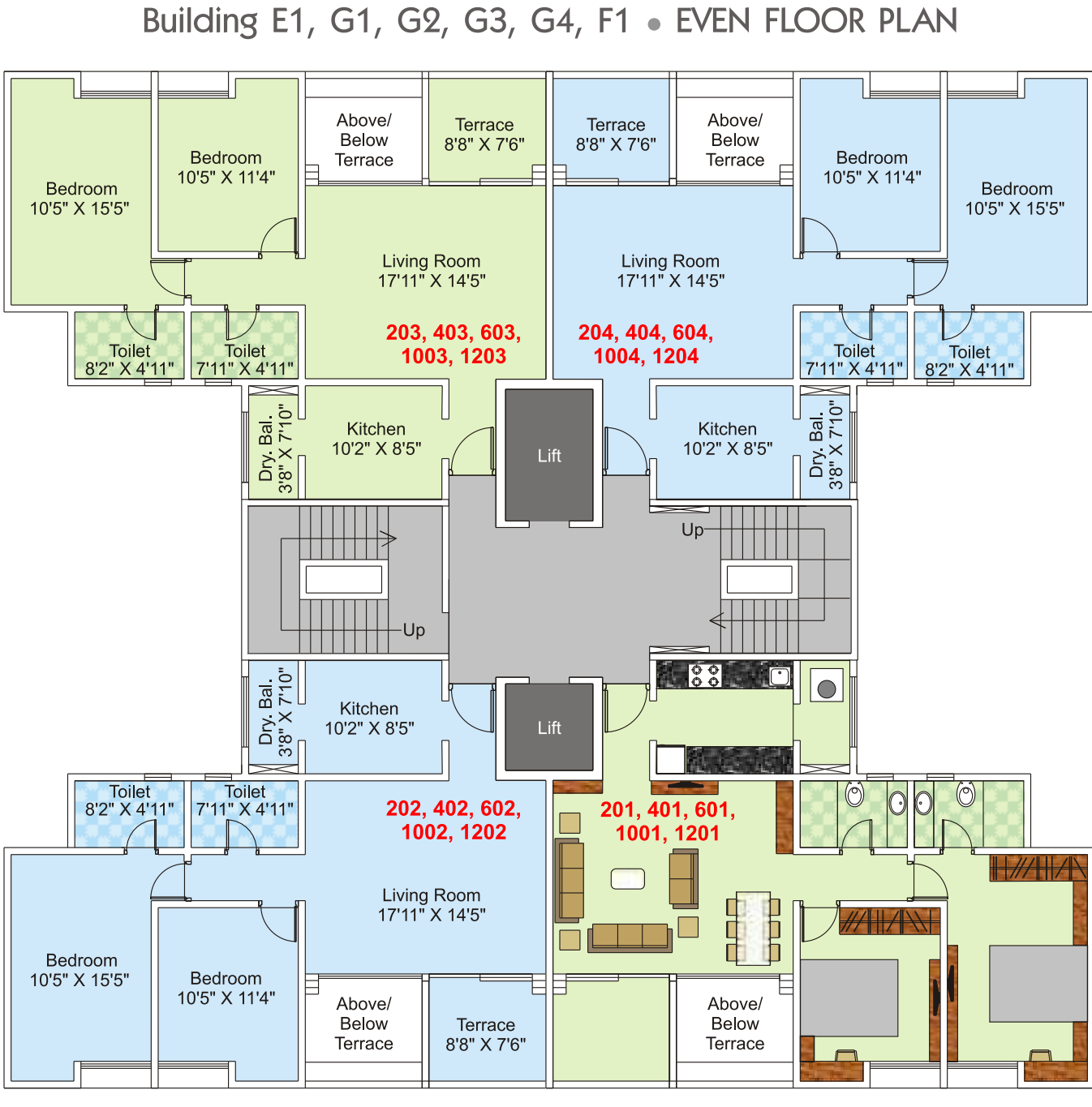
Advantageously located in Phursungi (off Pune-Solapur Highway), Park Infinia is close to SP Infocity (IT SEZ) – the IT hub that's home to many leading IT & software companies. Focused on Nature, the project offers aesthetically planned apartments, world-class amenities, breathtaking landscaping, beautiful parks and streetscapes merging seamlessly. Distinctly ahead of other projects, Park Infinia has close proximity to Pune's fast growing areas like Hadapsar, Mundhwa, Kharadi, Wanowrie and Undri.

One of the flagship projects of Kumar Properties, a brand backed by over 27,000 happy customers for excellence and reliability, Park Infinia is centered on bringing the best of living experience within an affordable budget. While more than 750 families at Park Infinia Phase-I and II enjoy its benefits and pleasures, the Phase-III is a golden opportunity for those who wish to live in a serene, peaceful yet potentially booming locale.

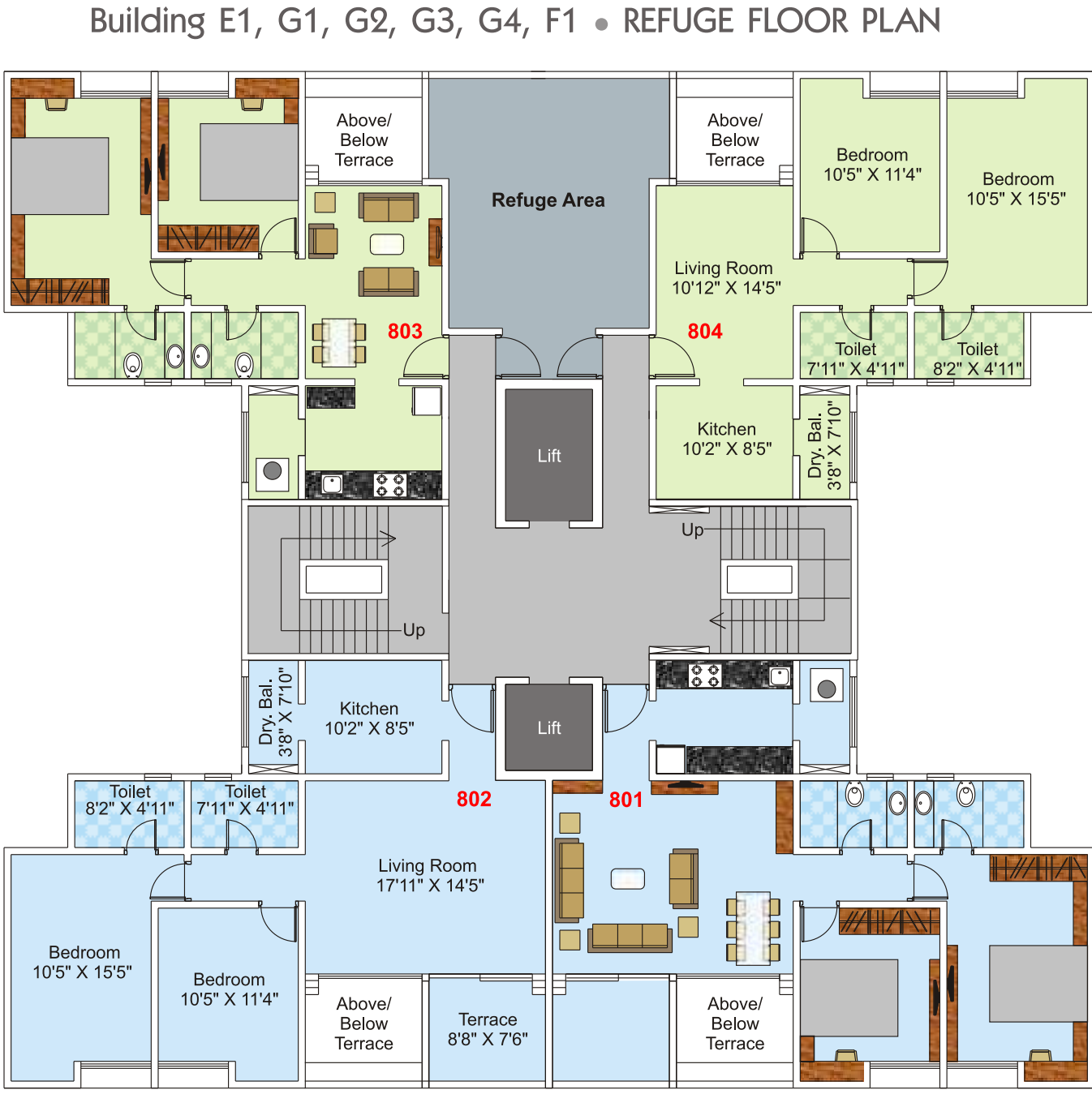
- Pleasant views of outside environment
- Meandering eco gardens
- Pedestrian spines and garden walkway
- Dense perimeter landscape
- Holistic energy-efficient approach
- Conservation of scarce national resources



Apartment Nos.	Type	Carpet (sq.ft.)	Terrace (sq.ft.)	Total Carpet (sq.ft.)	Saleable (sq.ft.)
101, 301, 501, 701, 901, 1101, 102, 302, 502, 702, 902, 1102, 103, 303, 503, 703, 903, 1103, 104, 304, 504, 704, 904, 1104	2 BHK	821	64	885	1,150



Apartment Nos.	Type	Carpet (sq.ft.)	Terrace (sq.ft.)	Total Carpet (sq.ft.)	Saleable (sq.ft.)
201, 401, 601, 1001, 1201, 202, 402, 602, 1002, 1202, 203, 403, 603, 1003, 1203, 204, 404, 604, 1004, 1204	2 BHK	821	64	885	1,150



Apartment Nos.	Type	Carpet (sq.ft.)	Terrace (sq.ft.)	Total Carpet (sq.ft.)	Saleable (sq.ft.)
801, 802	2 BHK	821	64	885	1,150
803, 804	2 BHK	674	—	674	876



On-location Image



On-location Image



On-location Image



On-location Image