



LUXURY IN THE LAP OF NATURE



Silver Mist



Silver Mist





A tradition of trust and excellence

Silver Mist is a project by Nirman Buildcon a name that commands respect in the Construction industry. The company is inspired by the vision of creating residential & business spaces that enliven the lives of customers. Giving the best value for money to clients is our core philosophy. While our business stands foundation of trust, transparency and quality, each of our projects is based on in-depth planning and attention to detail.

Silver mist, is a new generation home based on a concept that house is not just walls and floors and roofs, but, a promise. A promise to be a part of all your dreams, a promise which says I'll still be there standing strong when the wind changes its direction, a promise to protect.

We believe that a house is more or less like your life partner, and hence you don't want to make a mistake and you want to choose with care. Hence, we give you, your life partner who is dependable, trustworthy, classy, elegant, chic, sophisticated – someone who will make you proud

Come..... experience the LUXURY in the lap of NATURE







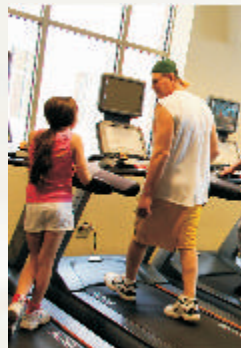
*Silver mist created a lifestyle truly inspired by nature.
A world where your mornings will echo with chirps of happiness,
where the wind soothes your mind & soul and relaxes your
thoughts as you indulge in the luxury of your home.*







*Ideally sized apartments, with wide windows and wonderful ventilation
and a terrace attached to the living room
from where you can enjoy the view of the greens.
Against a backdrop of green hills, these storybook homes
with their Mediterranean styling beckon you to revel in the lyrics of Nature
and the music of the mountain winds.*





A WING

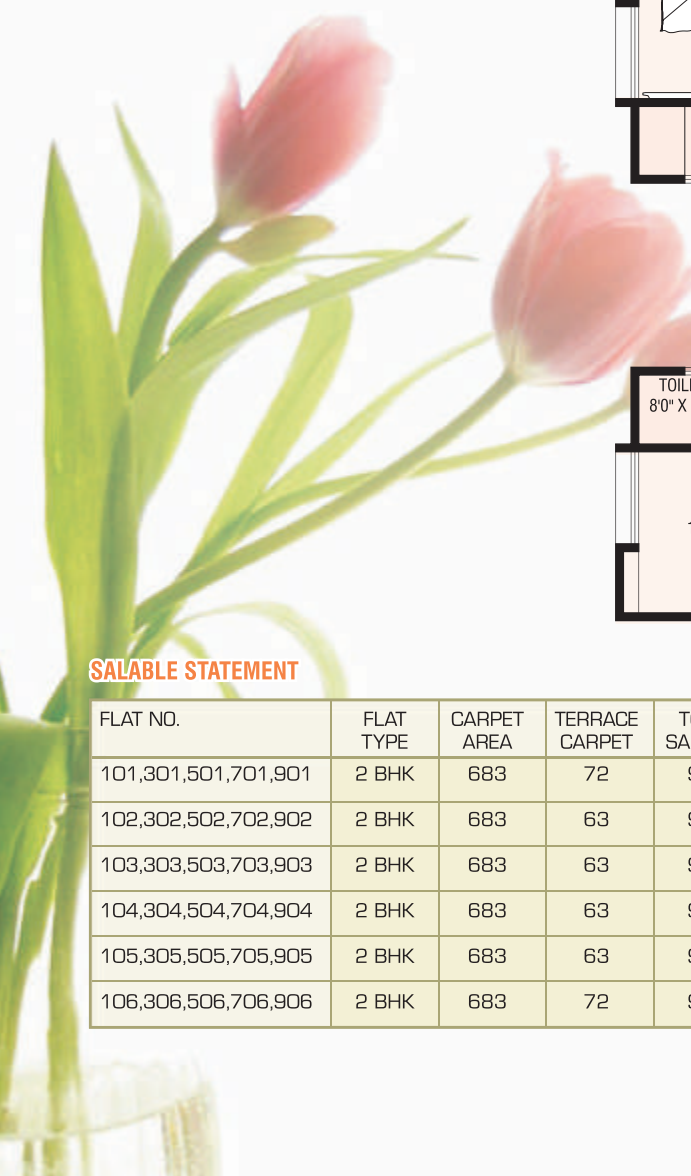
B WING

LAYOUT PLAN



*Silver mist is journey through imagination that culminates with aesthetic homes that spell luxury and offer security for your loved ones.
It's a place where nature & technology co-exist in perfect harmony*





SALABLE STATEMENT

FLAT NO.	FLAT TYPE	CARPET AREA	TERRACE CARPET	TOTAL SALABLE
101,301,501,701,901	2 BHK	683	72	981
102,302,502,702,902	2 BHK	683	63	970
103,303,503,703,903	2 BHK	683	63	970
104,304,504,704,904	2 BHK	683	63	970
105,305,505,705,905	2 BHK	683	63	970
106,306,506,706,906	2 BHK	683	72	981

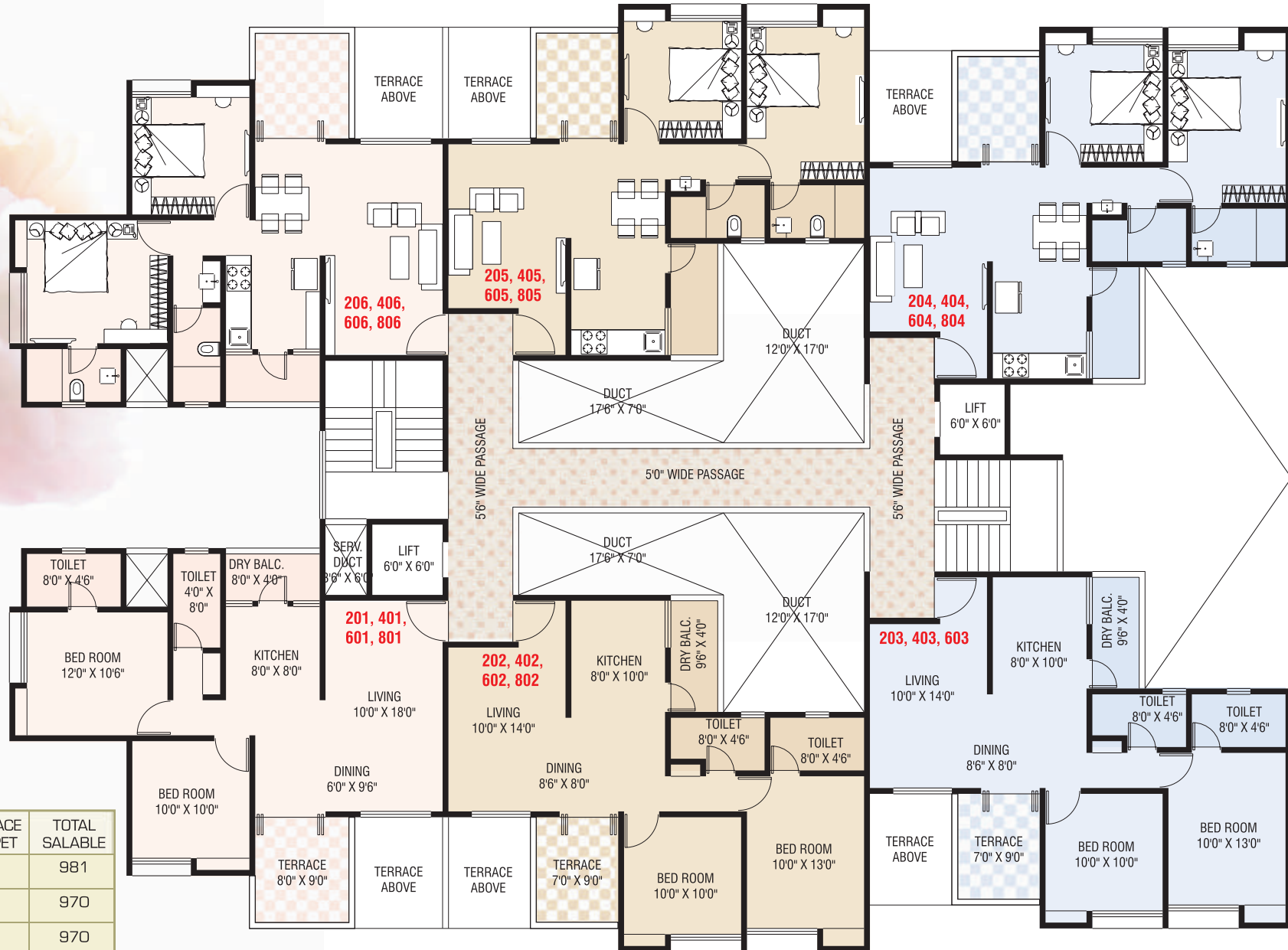
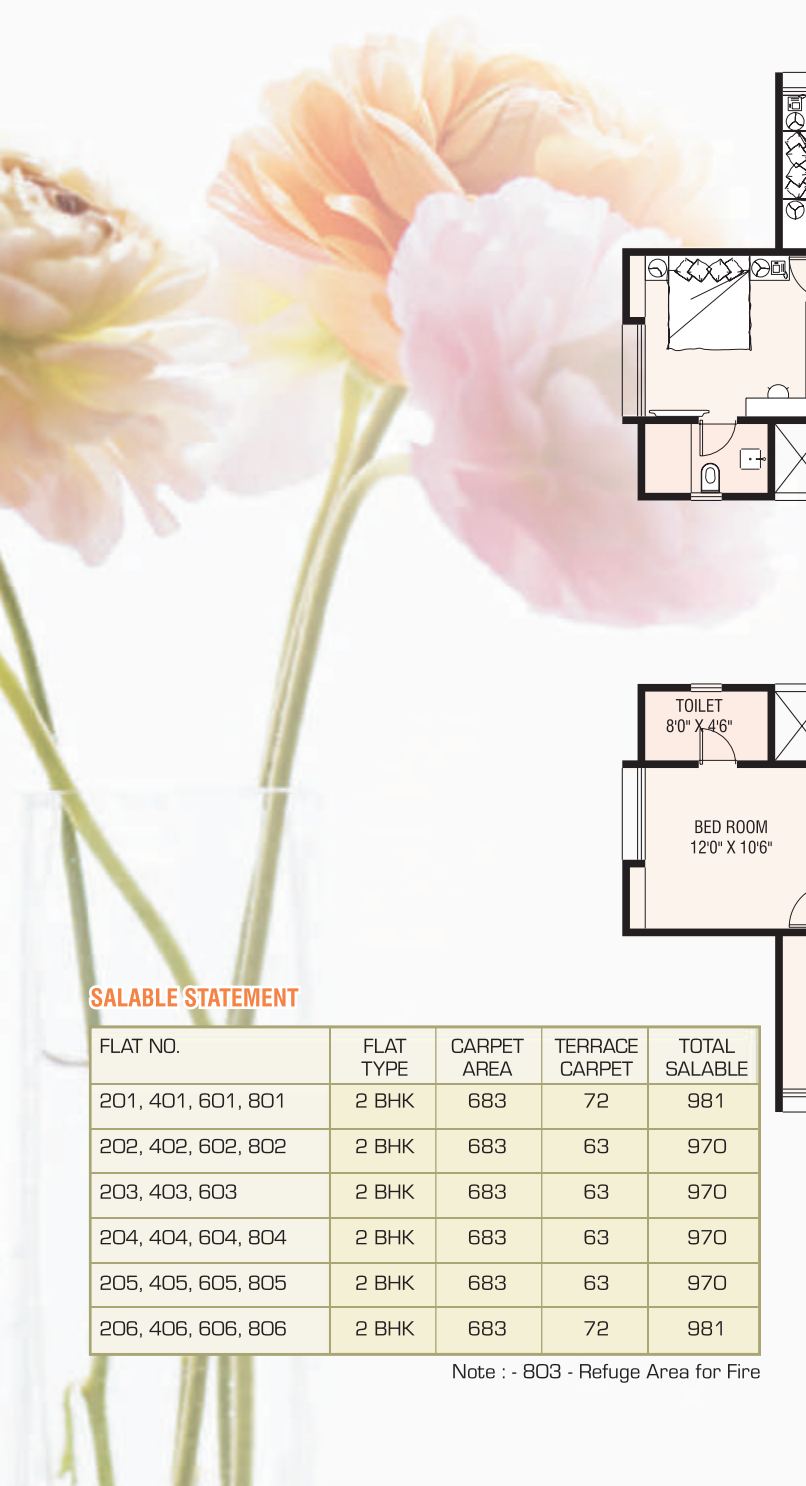
A Wing

TYPICAL FLOOR PLAN
[1st, 3rd, 5th, 7th & 9th floor]



B Wing





SALABLE STATEMENT

FLAT NO.	FLAT TYPE	CARPET AREA	TERRACE CARPET	TOTAL SALABLE
201, 401, 601, 801	2 BHK	683	72	981
202, 402, 602, 802	2 BHK	683	63	970
203, 403, 603	2 BHK	683	63	970
204, 404, 604, 804	2 BHK	683	63	970
205, 405, 605, 805	2 BHK	683	63	970
206, 406, 606, 806	2 BHK	683	72	981

Note : - 803 - Refuge Area for Fire

A Wing

TYPICAL FLOOR PLAN
(2nd, 4th, 6th & 8th floor)



B Wing



Amenities

- Multipurpose Hall
- Gymnasium
- Designer Landscaped Garden
- Children's Play Area
- Senior Citizen Space
- Amphitheater
- Stylish building Elevation
- Jogging Track
- Two Elevator's Per Building of Standard Make with Power Backup
- Trimix Internal Road
- Power Back-Up in Common Area
- Video Door Phone
- Sewage Treatment Plant
- Solar Water Heater for Bathrooms
- Grand Entrance Gate with Security Cabin
- Reticulated Gas Pipeline



Note : Furniture, Toilet Partition, Shower Panel all are indicative only.

Internal Specifications

Structure

- ◆ Earthquake resistant R.C.C. structure.
- ◆ 6" brickwork for internal & external walls.

Plaster

- ◆ Gypsum coat internally
- ◆ Sand face externally.

Kitchen

- ◆ Black Granite kitchen platform with S. S. sink.
- ◆ Dado ceramic tiles upto lintel level above platform.

Flooring

- ◆ 2'x2' vetrified flooring with skirting.
- ◆ 1'x1' antiskid tiles in toilet & terraces.

Doors

- ◆ Decorative laminated flush door's.
- ◆ Marble / Granite door frame in toilets.
- ◆ G.I. French Door in terrace.

Windows

- ◆ 3 track powder coated aluminum sliding windows with mosquito mesh and M.S. safety grill.

Toilet

- ◆ Designer wall tiles upto lintel level
- ◆ Jaquar or equivalent make. C.P. fittings.
- ◆ Hot & cold mixer unit with shower.
- ◆ Cera or equivalent make sanitary fixtures.

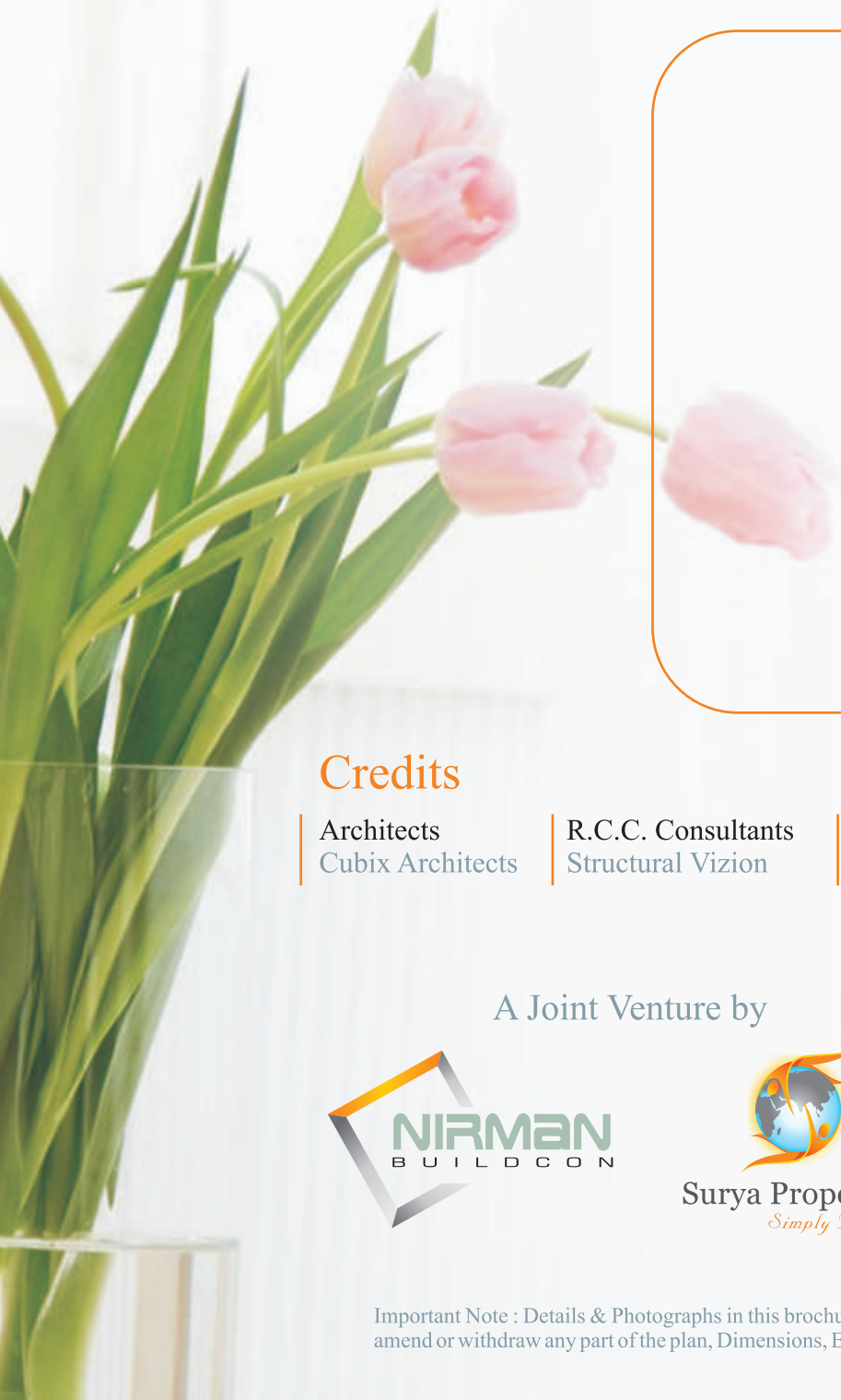
Electrifications

- ◆ Concealed copper wiring.
- ◆ Electrical switches of anchor / equivalent.

Paint

- ◆ Oil Bound Distemper in entire flat.
- ◆ Acrylic paint to external walls.





Credits

Architects
Cubix Architects

R.C.C. Consultants
Structural Vizion

Legal Advisors
Adv. Dadasaheb Nanekar

Plumbing & Electrical Consultants
Focus Engineering Consultancy Services

Landscape Designers
Mahesh Chinchalkar

A Joint Venture by



Site Address : 282 (Part) Porwal Road, Lohegaon, Pune
Office Address : Sunscape Building, Shop No. 2,
S.D.C. Plot No. C, 3/4, Nigdi Pradhikaran,
Pune 44. Ph.: 020 27658260

For Details Contact Mob.: 8007445566/8007665544

Important Note : Details & Photographs in this brochure are only indicative. While every care is taken to give information as precisely the developers reserve all & absolute rights to alter / amend or withdraw any part of the plan, Dimensions, Elevations, Facilities, Amenities, without any notice. Contents of this brochure shall not constitute part of the contract / Agreement.