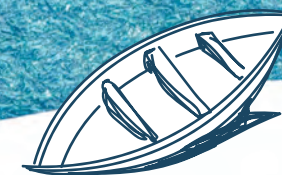


The image features a background of layered, textured blue paper. The layers are horizontal and have a fibrous, organic texture. Overlaid on this are several wavy, hand-drawn lines in white and a muted brown color. The word "positive" is written in a clean, white, lowercase sans-serif font, centered horizontally and slightly below the vertical center. The overall composition is abstract and artistic, with a focus on texture and color.

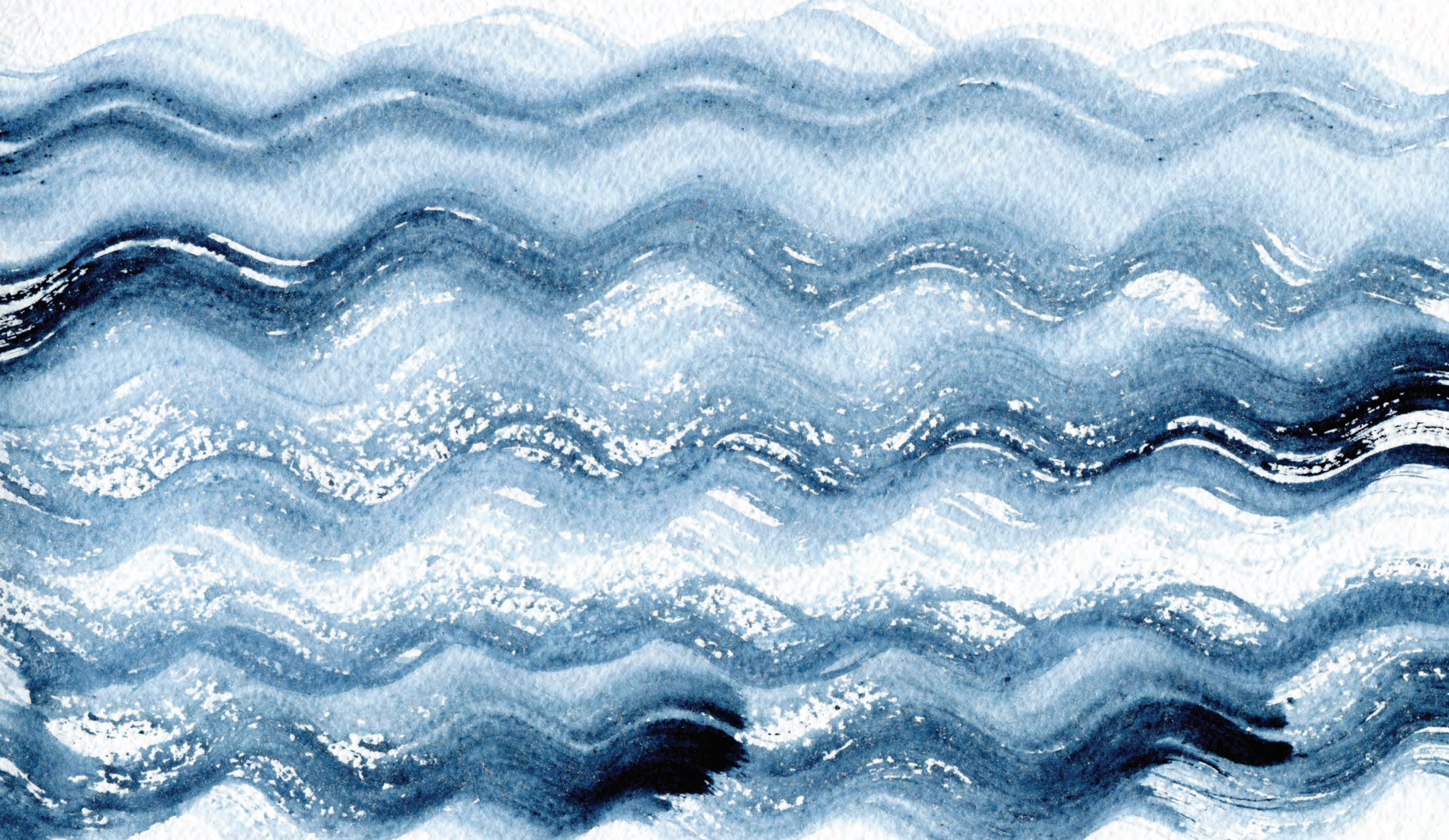
positive

vibes





blissful lives...



PRESENTING

ORBIT
TARANG 

POSITIVE VIBES. BLISSFUL LIVES.

“Within every aspect of existence lies a symphony of vibrations – the essence of Tarang. Our world is a tapestry woven from these vibrational threads, forming the very fabric of our reality.

Orbit Tarang serves as a harmonious convergence, inviting you to immerse yourself in a realm of positive vibrations that pave the way for a seamless flow of life.”



Modern Looks. Playful Nooks.

Influenced by the rhythmic ebb and flow of life's currents, our architectural design creates spaces where cherished memories are born, every nook telling its own story.

Highlights:

Sprawling 79 Cottahs Land

2 Towers | G+12

130 Units

2, 3 & 4 BHK Residences

910 -1920 Sq.Ft. (SBUA)

3 Side Open Apartments

70% Open Space

Vaastu Compliant

Pre-certified IGBC Gold rated Green Building



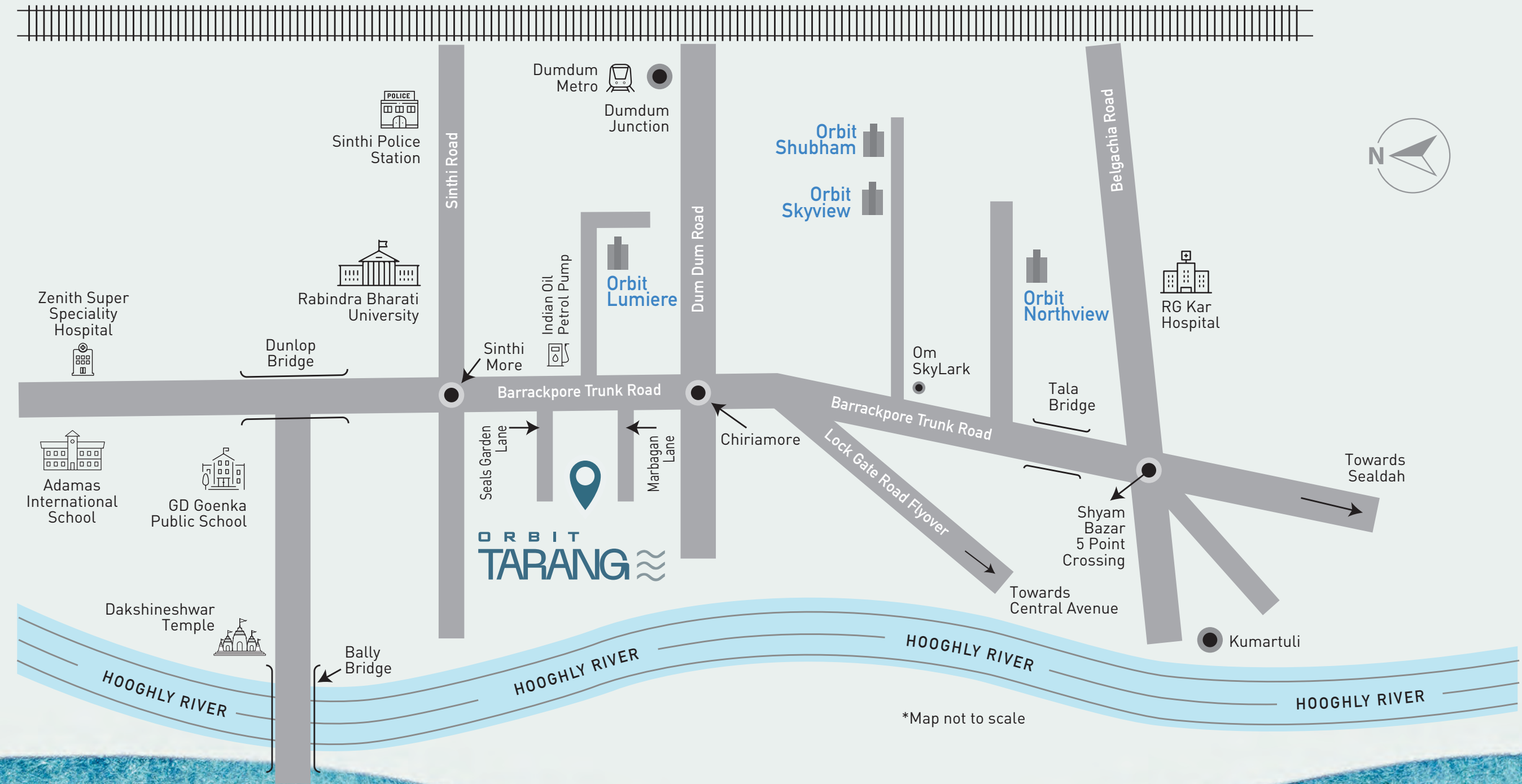


Near, There, Everywhere.

Orbit Tarang, an idyllic haven of peace, cleverly tucked away just off the bustling B T Road, where the allure of a prime location seamlessly blends with the tranquillity you desire. Enveloped near Chiriamore, the project resides in the heart of the city. At Orbit Tarang, convenience becomes a way of life.

Always in close proximity

Chiriamore Crossing	350 Mt
Rabindra Bharati University	1 Km
Paikpara/BT Road Crossing	1 Km
Sinhi More Crossing	1 Km
Hooghly River Ghat	1 Km
Dumdum Metro	1.5 Km
Tala Bridge	1.5 Km
Shyambazar Metro	3 Km
Shyambazar 5 Point Crossing	3.5 Km
Kumartulli	3.5 Km
Kolkata Railway Station	3.5 Km
Dunlop Bridge	3.5 Km
Dakshineswar Temple	5 Km
Dumdum Airport	9 Km



*Map not to scale

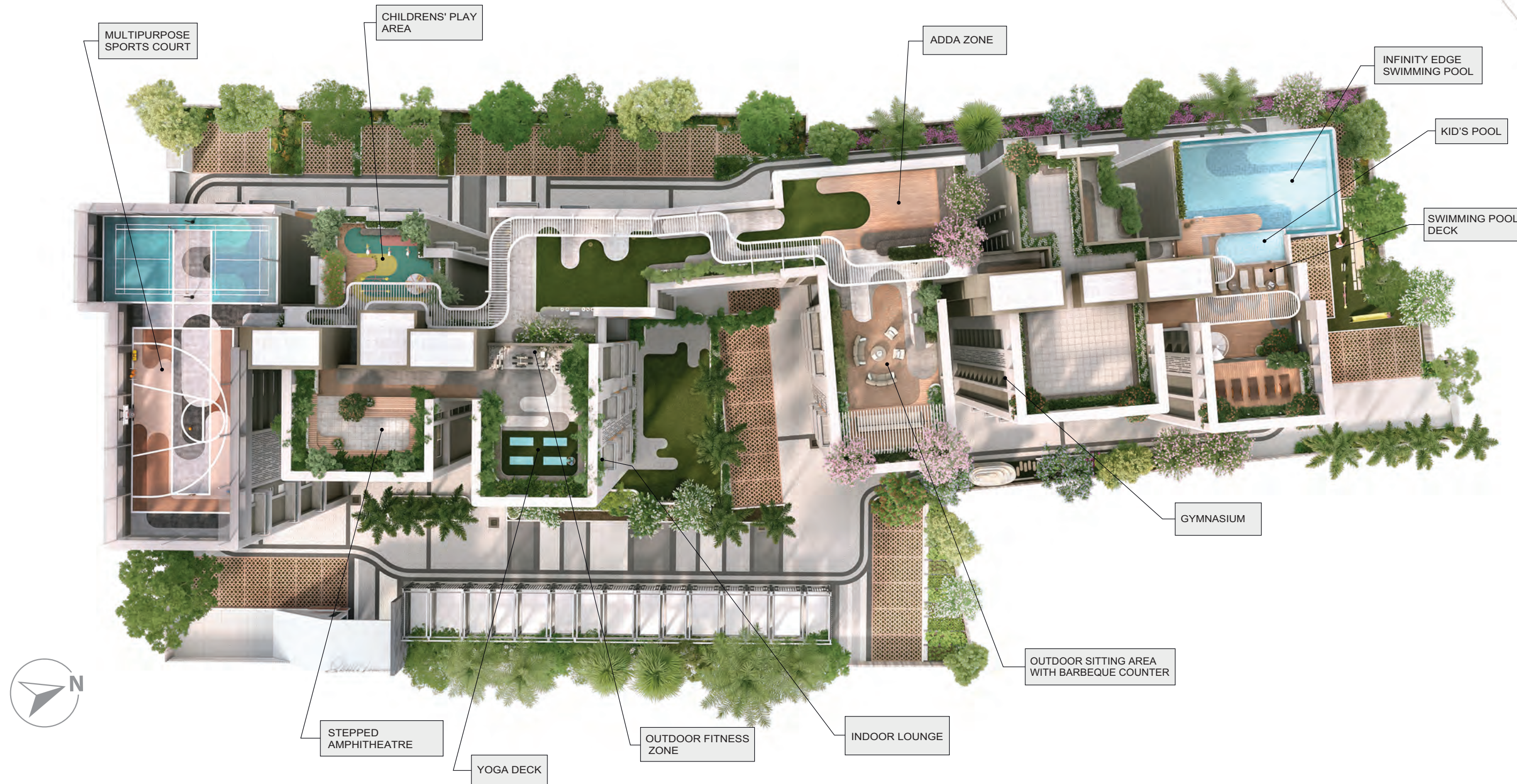


CLUB
RIPPLE



High low. Go with the Flow

Experience the Echo of Life's Vibrant Rhythm at **Club Ripple**.
Feel the reverberating pulse of boundless energy and unbridled spirit at the rooftop club,
where the vibrant rhythm of life intertwines with the very essence of existence, creating a
tapestry of exhilarating vibrations that transcend time and space.



For your holistic well-being

- Infinity Edge Swimming Pool
- Kids' Pool
- Pool Deck
- Multipurpose Court
- Outdoor Fitness Zone
- Kids' Play Area
- Yoga Deck
- Fitness Hub
- Indoor Games Room
- Indoor Lounge with Reading Zone
- Stepped Amphitheatre
- Barbeque Counter with sitting area
- Senior Citizen Seating Area
- Banquet Hall with Party Lawn
- Temple





Relax into tranquillity at the
Infinity Edge Swimming Pool



Artistic Impression



Unleash your sportive energy at the
Multipurpose Sports Court



Artistic Impression



Create magical moments at the
Vibrant Kids' Play Area



Artistic Impression



Free your mind
at the Fitness Zone



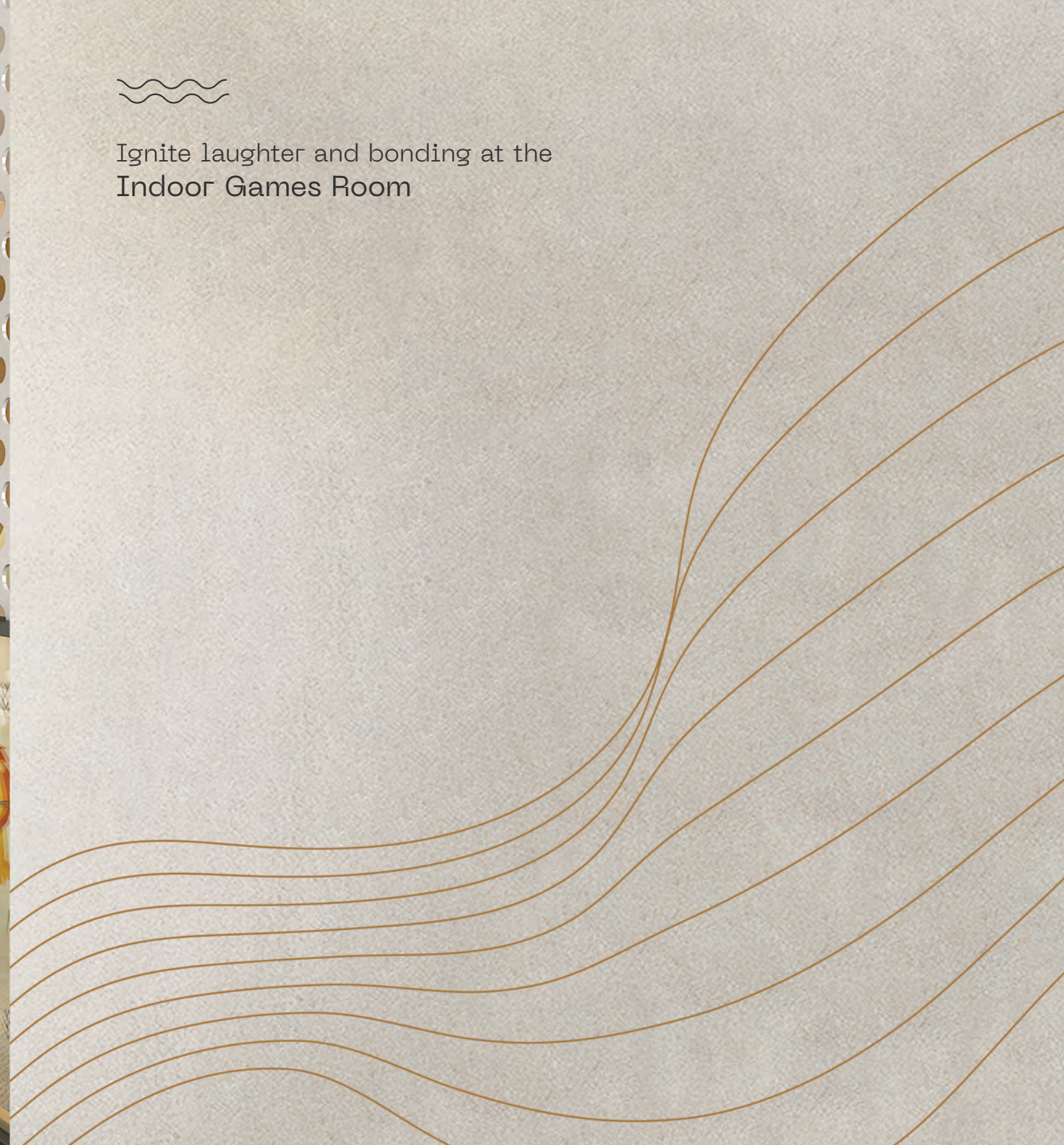
Savour culinary wonders
and friendships at the
Outdoor Lounge &
Barbeque Corner



Share precious moments
with your loved ones at the
Stepped Amphitheatre



Ignite laughter and bonding at the
Indoor Games Room





Artistic Impression



Sculpt your well-being at the
Gymnasium



Escape into serenity at the
Indoor Lounge





Celebrate life in grandeur at the
Banquet Hall



Banquet Hall with
Party Lawn



Artistic Impression



Grand entrance to a new
life of your dreams

Artistic Impression



Details Dainty. Comfort Plenty.

In the essence of Tarang, we shape abodes that transcend expectations,
delivering a realm of unmatched comfort and opulence.

Immerse in the intricacies that define this exceptional living experience,
where every element flows in harmony.

Tailored to your needs

Foundation & Structure

- Structure : RCC framed superstructure with ACC block/fly ash bricks as per design, for the optimum seismic consideration as stipulated by the IS code.
- Foundation : RCC piles and pile caps.
- Elevation : Towers meticulously designed and texture painted as per the architect's design.

Living/dining Room

- Flooring : Vitrified tiles
- Wall & Ceiling : Putty for smooth finish
- Main Door : Wooden/WPC Frame with teak finished flush door
- Hardware & Fittings : Godrej/Yale or equivalent make
- Window : Aluminium powder-coated windows with clear glass
- Electrical : Modular switches of Havells/Panasonic or equivalent make with copper wiring

Kitchen

- Flooring : Vitrified tiles
- Walls : Ceramic tiles for up to 2 ft. height above the counter
- Ceiling : Putty for smooth finish
- Doors : Wooden/WPC frame with teak finished flush door
- Hardware & Fittings : Godrej/Yale or equivalent make
- Window : Aluminium powder-coated windows with clear glass & provision for an exhaust fan
- Counter : Granite/Artificial stone counter-top
- Plumbing : Steel sink with water provision
- Electrical : Modular switches of Havells/Panasonic or equivalent make with copper wiring

Bedrooms

- Flooring : Vitrified tiles
- Walls & Ceiling : Putty for smooth finish
- Doors : Wooden/WPC frame with teak finished flush door

- Hardware & Fittings : Godrej/Yale or equivalent make
- Window : Aluminium powder-coated windows with glass panes
- Electrical : Modular switches of Havells/Panasonic or equivalent make with copper wiring
- Balcony : Flooring - matte finish tiles, MS Railings/glass railings as per architect's design

Toilets

- Flooring : Anti-skid ceramic/vitrified tiles
- Walls : Ceramic tiles for up to 7 ft. height
- Ceiling : Putty for smooth finish
- Doors : Wooden/WPC frame with teak, finished flush door
- Hardware & Fittings : Godrej/Yale or equivalent make
- Window : Aluminium powder-coated windows with clear glass & provision for an exhaust fan
- Electrical : Modular switches of Havells/Panasonic or equivalent make with copper wiring

- Sanitary-ware : Jaquar/Parryware/Essco or equivalent make
- CP Fittings : Jaquar/Parryware/Essco or equivalent make

Ground Floor Lobby

- Flooring : Combination of large size vitrified tiles as per architect's design
- Walls : Premium finish as per architect's design

Typical Floor Lobby

- Flooring : Combination of large size vitrified tiles as per architect's design
- Walls : Premium finish as per architect's design

Elevators

- 2 automatic elevators of Otis/Kone or equivalent make in each tower

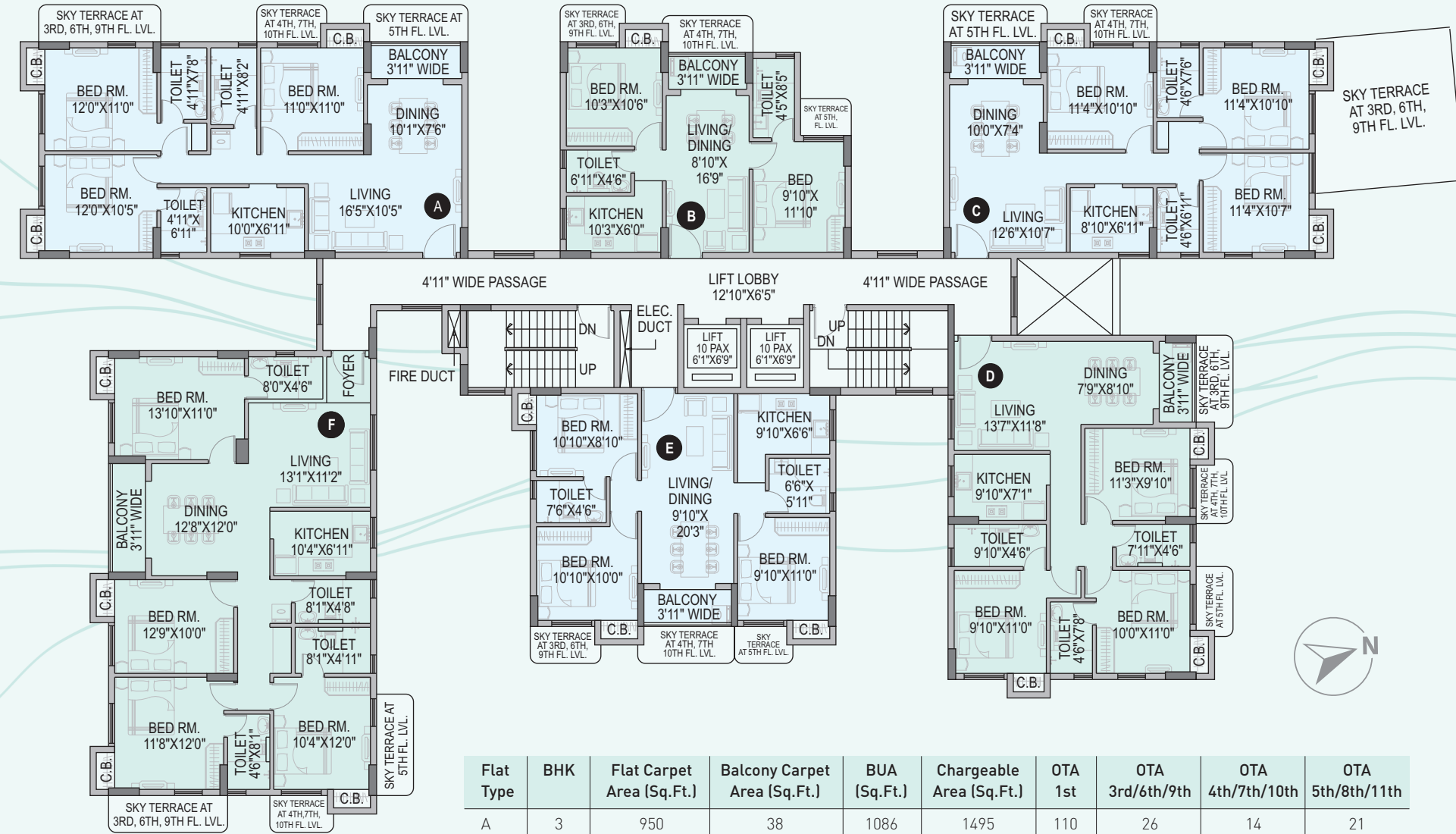
Master Plan



Legend

- 1 Entry / Exit
- 2 Driveway
- 3 Drop Off
- 4 Car Parking
- 5 Mechanical Car Parking
- 6 Temple
- 7 Lawn
- 8 Generator & Service Area
- 9 Entrance Lobby
- 10 Banquet Hall
- 11 Landscaped Zone
- 12 Toddler's Zone

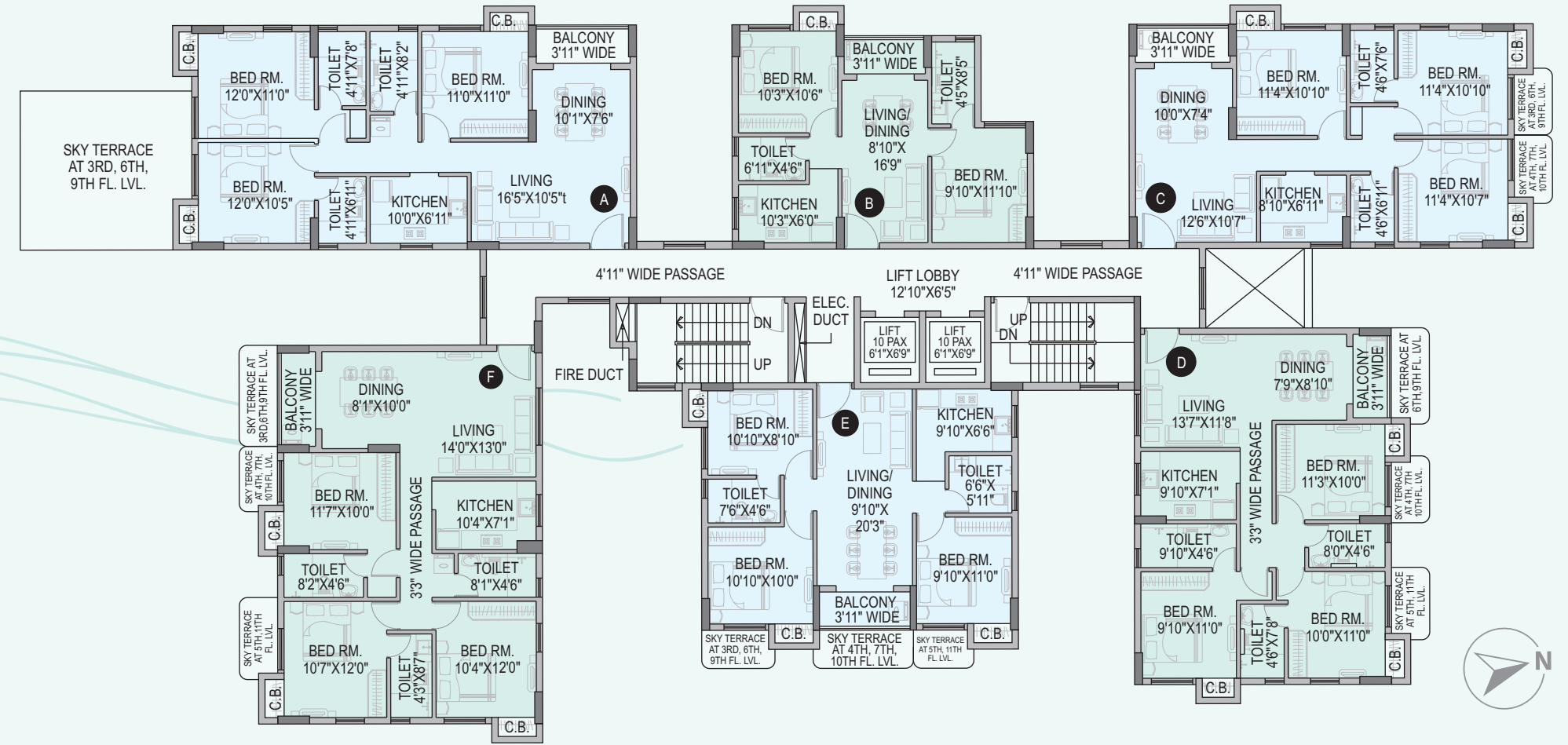
Typical Floor Plan – Tower 1



Flat Type	BHK	Flat Carpet Area (Sq.Ft.)	Balcony Carpet Area (Sq.Ft.)	BUA (Sq.Ft.)	Chargeable Area (Sq.Ft.)	OTA 1st	OTA 3rd/6th/9th	OTA 4th/7th/10th	OTA 5th/8th/11th
A	3	950	38	1086	1495	110	26	14	21
B	2	548	33	657	910	68	13	18	11
C	3	816	38	935	1290	104	127	15	21
D	3	873	34	997	1375	NA	19	13	14
E	3	734	37	857	1185	NA	14	20	12
F	4	1237	45	1394	1920	66	25	13	21

Note: Final Chargeable Area is the Chargeable Area + Open Terrace Area

Typical Floor Plan – Tower 2



Flat Type	BHK	Flat Carpet Area (Sq.Ft.)	Balcony Carpet Area (Sq.Ft.)	BUA (Sq.Ft.)	Chargeable Area (Sq.Ft.)	OTA 1st	OTA 3rd/6th/9th	OTA 4th/7th/10th	OTA 5th/8th/11th
A	3	950	38	1078	1485	107	133	NA	NA
B	2	548	33	657	910	68	NA	NA	NA
C	3	816	38	944	1300	235	13	13	NA
D	3	873	34	997	1375	226	19	13	14
E	3	734	37	857	1185	NA	14	20	12
F	3	959	39	1092	1505	62	21	13	16

Note: Final Chargeable Area is the Chargeable Area + Open Terrace Area

Ek alag soch ~

Where Passion Becomes Architecture

Since 1995, Orbit Group has endeavoured to turn unique wishes into palpable realities in the realm of real estate. We believe in more than just physical structures; every square foot is a cradle to nurture life and elevate emotions. Our commitment to 'Ek Alag Soch' drives us to collaborate with innovative architects and deliver unparalleled spaces. 'Rishton Ki Mithaas' is at the core of our philosophy, fostering strong bonds with customers, shareholders and associates. Through professional and stellar service, we aim to strengthen these connections further. At Orbit, relationships form the deepest foundation and our reputation soars high like our visionary high-rises. Together, let's make dreams a reality, where every moment is filled with sweetness and joy.

Revered Rewards

 <p>Realty+ Conclave & Excellence Awards 2023 - East Mixed Use Project of the Year Orbit Urban Park</p>	 <p>Realty+ Conclave & Excellence Awards 2023 - East Luxury Project of the Year Orbit Ekam</p>	 <p>Credai Realty Awards 2022 Ongoing Mid-Segment Housing Project Orbit Lumiere</p>	 <p>Realty+ Conclave & Excellence Awards 2022 - East Mid-Segment Project of the Year Orbit Lumiere</p>
 <p>Economic Times - Real Estate Conclave Awards 2021 East Residential Project: Developer (Metro) Orbit Group</p>	 <p>Realty+ Conclave & Excellence Awards 2020 - East Mid-Segment Project of the Year Orbit Ashwa</p>	 <p>Realty+ Conclave & Excellence Awards 2019 Ultra-Luxury Lifestyle Project of the Year Orbit Victoria</p>	 <p>Realty+ Conclave & Excellence Awards 2018- East Green Project of the Year Orbit Royale</p>
 <p>Credai Realty Awards 2017 Best Mid-Segment Housing Project Orbit Sky Garden</p>	 <p>Global Real Estate Congress Real Estate Awards Most Trusted Real Estate Developer of the Year Orbit Group</p>	 <p>IGBC Green Champion Award Leading Developer in the Green Building Movement- West Bengal Orbit Group</p>	 <p>13th Annual Awards Estate Awards Most Innovative Project of the Year Residential - East Orbit Lumiere</p>

Partners
in progress



PRINCIPAL ARCHITECT



Raj Agarwal & Associates

An architectural consultancy house initiated by Raj Agarwal and Kaushik Dasgupta in 1996. The firm has a large energetic team of experienced employees and holds several awards and recognitions.

STRUCTURAL ENGINEER

S.P.A. CONSULTANTS

CONSULTING STRUCTURAL ENGINEERS

Conceived by Mr. Sanjiv Parekh, SPA Consultants has today emerged as one of the leading players providing various consultancy services in the field of structural engineering.

PLUMBING CONSULTANT



Unique Engineering

Specialized as PHE consultant, Unique Engineering Firm is headed by Mr. Ratan Kumar Sarkar and specializes in design services. Covering notable developments across India and internationally, the firm has gained considerable recognition in the years.

SOLICITORS & ADVOCATES

r.ginodia & co.
SOLICITORS & ADVOCATES

Established in 1967 and having extensive experience in Real Estate transactional work, like advising on the title, purchase of land, development and sale/lease of residential, commercial and retail projects. The Asia Pacific Legal 500 has classified the firm as a Tier 1 firm in Kolkata.

ELECTRICAL CONSULTANT

Sandipan Bhattacharya

It is a professionally managed company having a team of qualified & highly experienced engineers in the field of Project Engineering & Consultancy. With over 40 years of experience in designing electrical systems having consulted in over 30 Residential & Commercial Projects as well as various hotels, hospitals, educational institutions and industrial parks.

Our pride, standing tall

LUXURY CONDOMINIUMS



Orbit Ekam, Minto Park



Orbit Urban Park, New Town



Orbit Royale, Alipore



Orbit Victoria, Shakespeare Sarani



Orbit Sky Garden, Ballygunge

LIFESTYLE LIVING



Orbit Lumiere, BT Road



Orbit Ashwa, Alipore



Orbit Sky View, BT Road



Orbit North View, BT Road



Orbit Shubham, BT Road



RISHTON KI MITHAAS

CREDAI
BENGAL



Site address:

5A Seals Garden Lane, B.T. Road, Kolkata 700 002

www.orbitgroup.net

Disclaimer - All dimensions mentioned in the drawings may vary due to construction contingencies, construction variances, site conditions and changes required by regulatory authorities. Specifications, amenities, information, images, visuals shown in this promotional document is/are indicative of the envisaged development and are subject to approvals. Images marked as Rendered Image or Artist's Impression are only indicative. The Developer reserves rights to make additions, deletions, alterations or amendments as and when it deems fit and proper. All intending Allottees are bound to inspect and appraise themselves of all plans and approvals and other relevant information prior to making any purchase decisions and nothing in this promotional document or other documents is intended to substitute the actual plans and approvals obtained from time to time. Brochure or Leaflet is a marketing tool and not a legal document.

WBRERA/P/KOL/2023/000513 • www.rera.wb.gov.in