



The book of green homes.

HUBTOWN
SEASONS
state-of-the-earth living





Hubtown Seasons

Far removed from the clutter of urban chaos and concrete jungles, nests a natural abode, right in the heart of Mumbai.

Hubtown Seasons, Chembur. Open spaces for open minds.

It's where you wake up each morning to the sound of whistling woods, chirping birds and every other delight nature has to offer, often forgetting you live in the city that never sleeps. Where the line between the indoors and outdoors fades entirely.

Where nature becomes part of your lifestyle and your living room in the same measure. Come, experience world-class living in an environment that is truly one of its kind.

State of the earth living

Hubtown Seasons is a residential development that has achieved what is normally considered impossible.

When one buys a house, it is hoped that the location to be close to the office and to the office of every working family member. Ideally it should even be close to the domestic and international airports. And close to the children's school or college, including that dream institution they will study in, eventually. Then one wishes that for the senior members of the family, hospitals will be close by. Besides all this, it is normal to wish that the best quality of life that the city has to offer in terms of restaurants, shopping and entertainment, will be easy to access. Finally, this superbly located house must be in a safe and green gated township. Further, the apartment itself should be spacious and the neighbour should be of one's own kind, with the same taste for the good life.

Naturally this simple requirement in the paragraph above, seems impossible and if possible, may well be quite expensive. But no longer. Hubtown Seasons is a gated township filled with a 10 acres old forest with many trees as old as a century. The multi-storeyed towers here are designed to not merely view the forest, but to seamlessly blend with it. The biggest surprise is that this forest lies in the centre of Mumbai, in the heart of the city. As you know, now Chembur is the finest location you can get. It has superb doorstep connectivity through the Eastern



Express Highway, the SCLR, the BKC Connector, the Metro station at Ghatkopar, the Eastern Freeway to South Bombay, and the Monorail which goes till Jacob Circle.

Finally, living in Hubtown Seasons allows you to avail a huge number of stunning amenities which are thoughtfully planned, such that they blend with the natural surroundings. For example, a wooden treetop walk, an airy library, an open gym, a charming treehouse; over and above standard amenities like clubhouse, multipurpose courts, bicycle track, barbeque corner and swimming pool etc.

And the apartments? Well these are spacious and designed for those who are used to living in spacious apartments of quality. So when you buy a 2, 3 or 4 BHK apartment at Hubtown Seasons, remember, a car-free private forest of 10 acres in the centre of the city comes with it. As does, the smile on the faces of your family who will proudly cherish their new state-of-the-earth home, which was impossible to buy anywhere in Mumbai, till now. So head into the woods of Hubtown Seasons, with your family and friends and take back an unforgettable experience. That is our promise.



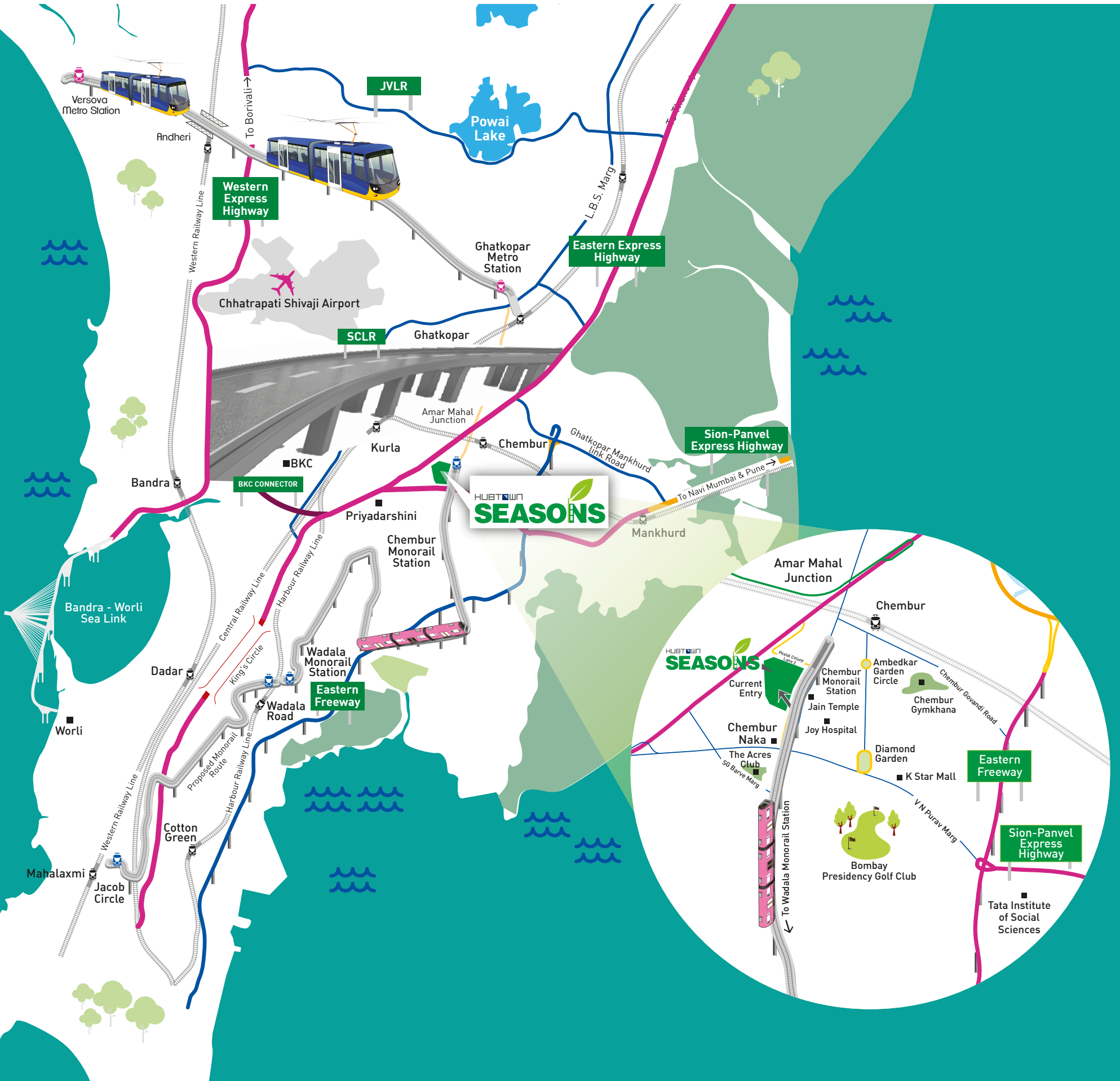


Your home in Chembur makes perfect sense.

- Home to BKC via SCLR – 20 minutes
- Home to BKC via BKC Connector – 15 minutes
- Home to Andheri via Mumbai Metro Rail – 30 minutes
- Home to International Airport via Mumbai Metro Rail – 30 minutes
- Home to Domestic Airport via SCLR – 25 minutes
- Home to Worli via SCLR and the Sea Link – 25 minutes
- Home to Mahalaxmi Race Course via Monorail – 30 minutes
- Home to Lower Parel via Eastern Express Highway – 30 minutes
- Home to Fort via Eastern Freeway – 25 minutes
- Home to Thane via Eastern Express Highway – 35 minutes
- Home to Vashi via Sion Panvel Highway – 25 minutes
- Home to Powai via Eastern Express Highway – 25 minutes


*Approximate time

-  Express Highways
-  Eastern Freeway
-  SCLR
-  Mumbai Metro
-  Monorail
-  Railways
-  Flyovers



NOT TO SCALE


From the heart of the city to anywhere you need to be, in minutes.



Fort
25 mins via
Eastern Freeway



Lower Parel
30 mins via
Eastern Express
Highway




Mahalaxmi
30 mins via
Monorail



Worli
25 mins via
SCLR and Sea Link




BKC
15 mins via
BKC Connector



BKC
20 mins via
SCLR



Domestic Airport
25 mins via
SCLR



Intl. Airport
30 mins via
Mumbai Metro



ACTUAL PANORAMA

Andheri
30 mins via
Mumbai Metro

Powai 25 mins
via Eastern Exp.
Highway

Thane 35 mins
via Eastern Exp.
Highway

Chembur
Railway Station

Navi Mumbai

Eastern Exp.
Highway

SCLR

Chembur
Monorail Station





Disclaimer: Water body images are not to scale. Further they appear larger than actual in this image due to angled distortions

Escape from the concrete jungle and into the enchanting forest.

Keeping in mind the growing need for greenery in a city that keeps rising in concrete, Hubtown Seasons has been planned and created to ensure that this need does not remain unfulfilled. Not only has this been fashioned with world-class architecture and top-of-the-line amenities, but it also dwells in a beautiful location, creating an entirely new standard of comfort and convenience. As if this wasn't enough, Seasons ensures that a lush, authentic forest abounding in trees, birds and flowers of exotic nature surrounds these spacious homes. Now, every stroll within this confine will bring you wonder and every new day promises adventure.



Walk amidst tall trees.

GREENWAY – the Wooden treetop walk

A state of elevation awaits you when you stroll along the wooden treetop walk. This aerial pathway will treat you to a soft breeze cooled by lush branches, and colourful birds flying by gracefully at eye level. Not only will it play host to intimate conversations, but also make your inner child jump with sheer joy, wishing time would stand still.





Look, it's a Birdie.

HOLE-IN-ONE – Mini golf

This serves as a great stress buster, one especially for golf lovers.

And if this is the first time you'll be holding a golf club, what better place than the vicinity of your home to spend hours learning the game, and whiling your time away.



Old games, new heights.

BURROWS – the Treehouse

You'll seek any excuse you can find to sneak into the recreational treehouse. It could become your favoured spot during a game of hide and seek, or your daily den to catch up with friends. A childhood fantasy shared by many, it will be your temporary escape from the ground below. And, if the climb isn't exhilarating enough, the view will surely tickle your fancy in more ways than one.







A stylized illustration of a city skyline. The background is a solid magenta color. In the foreground, there are several black silhouettes of trees of varying heights and shapes. Some trees have white birds perched on their branches. Behind the trees, there are several buildings of different heights and colors, including magenta and light green. The buildings have windows represented by small squares. The overall style is minimalist and modern.

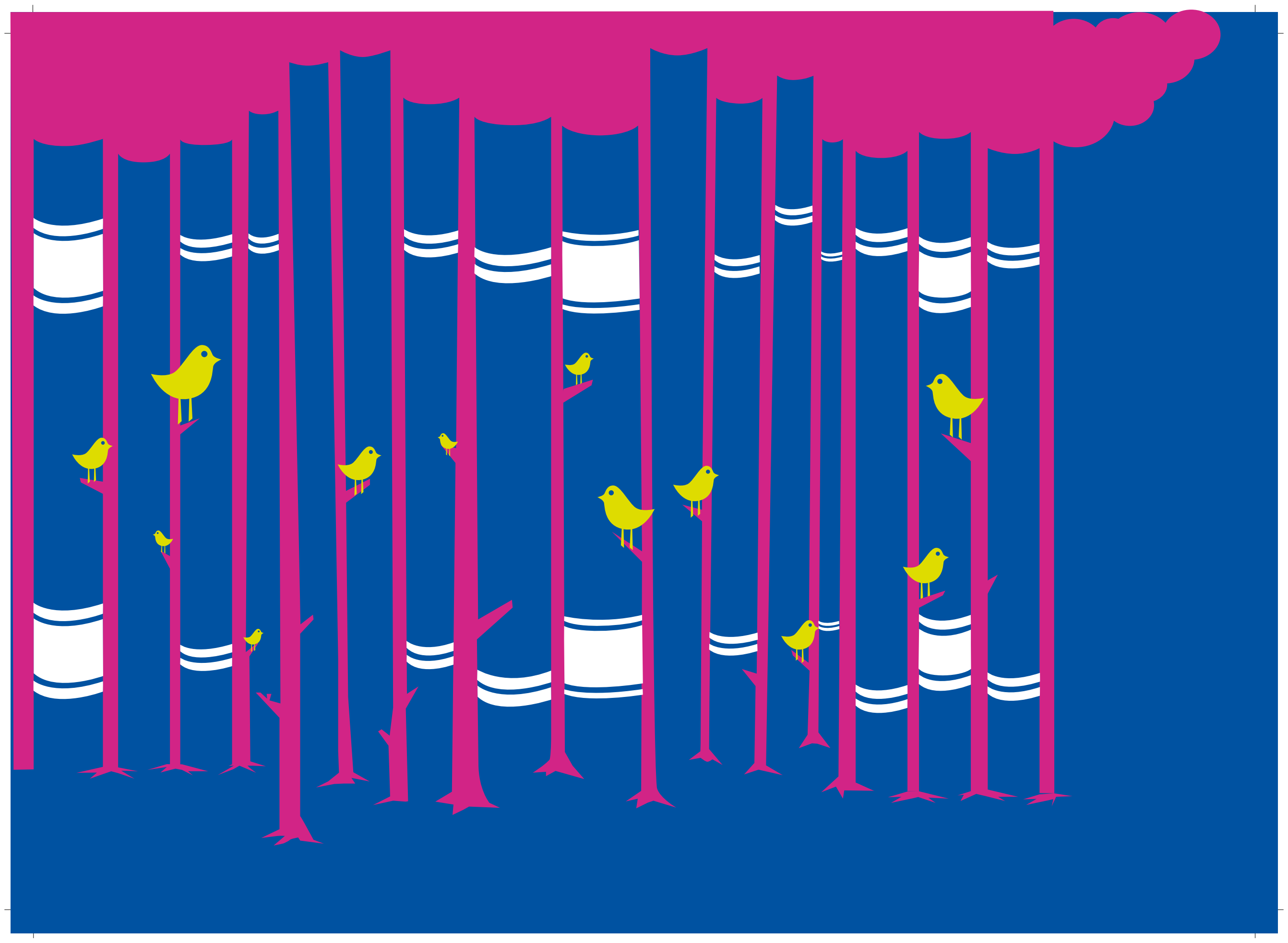
And you live right within this verdant world.

Seamlessly nesting amid these old trees will be the towers, where you will live.

Your abode is named appropriately on the theme of the most interesting forests of the world.

So take your pick.

But the amenities are far from over. So read on...



Read in the company of birds.

NEW LEAF – the Airy library

With countless books to enjoy reading under the tree of your choice, in the light of the Sun, the airy library is the perfect breeding ground for nature enthusiasts and open minds alike. No matter what you read here, your surroundings will always appear to be straight out of a fairy tale. It won't be quiet, but the chirping birds and rustling leaves will always keep you at ease.

Chase colours in the green.

FLUTTERS – the Butterfly garden

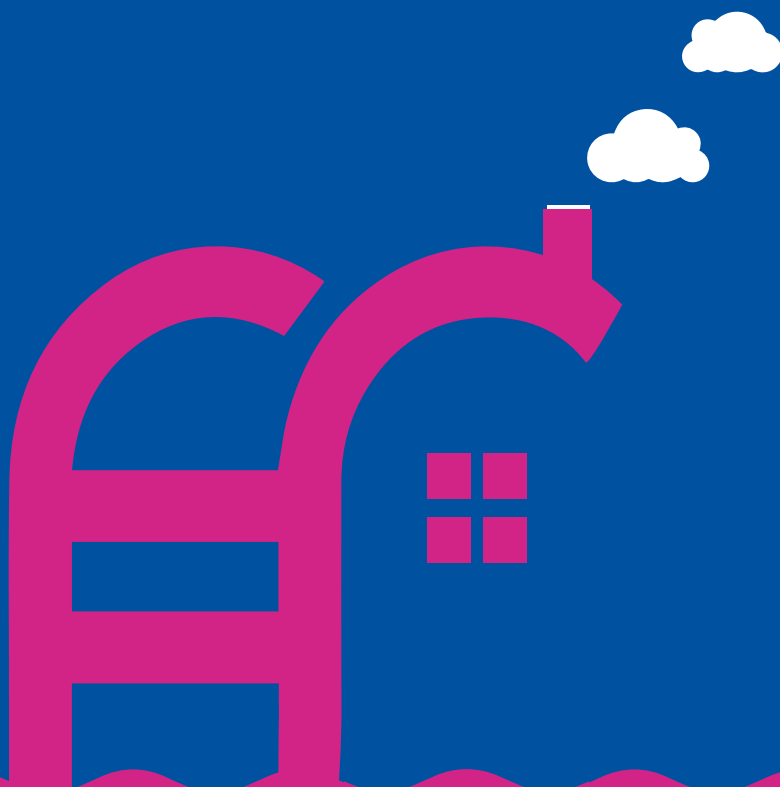
Amidst all the green you'll often find yourself chasing an array of colours and designs that rest perfectly on the wings of countless butterflies. With a garden so vivid and colourful, the verve of your early mornings, evenings and weekends will only multiply.



Dive into the calm.

DIP – the Swimming pool

Dip your feet after a long day at work or spend hours here on weekends, either way you'll find yourself making excuses to visit this beautiful swimming pool. Especially when it's only a stone's throw away from home.





Peace within the wild.

NEST – the Clubhouse

The clubhouse clubs everything you need with everything you have at your doorstep.

It has **GREEN CHI – the Yoga room**, where you can truly experience peace in the wild as you harness your inner positivity, anytime you wish.

It also includes **PAUSE - the Spa**, which is outfitted with outstanding conveniences and trained masseuses, so that you can unwind at leisure.

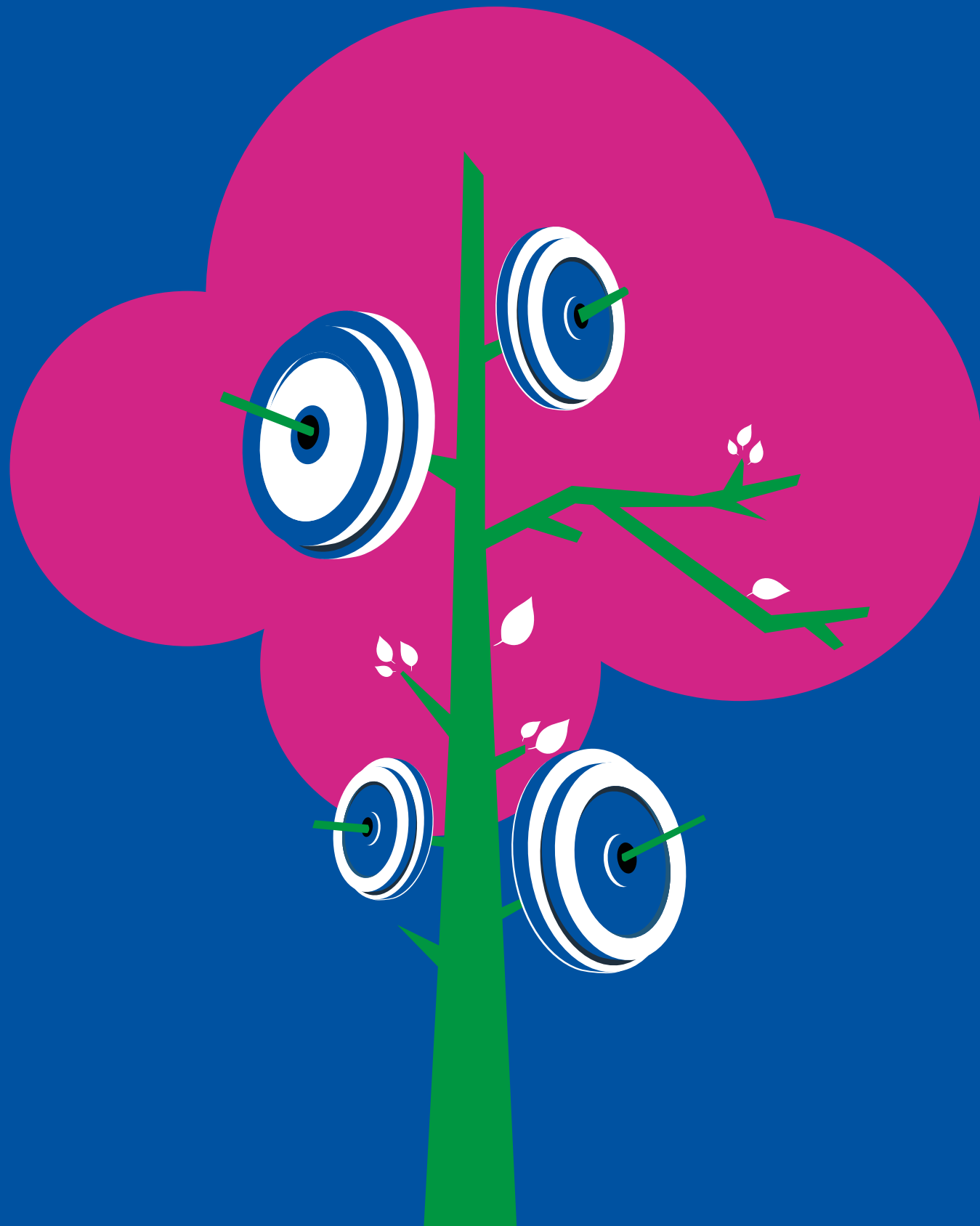


A stylized graphic on the left side of the page. It features a dark blue tree with white leaves against a magenta background. Two white dashed lines curve through the magenta area, suggesting a path or a track. The overall design is modern and clean.

Pedal into the wild.

PEDAL PARK – the Bicycle track

Pedal your way through the greenery and experience freshness in every sense of the word. Whether it is to stay fit, or relax on a Sunday morning, rest assured you'll revel in every bit of your ride, naturally.



Getting fit is a walk in the park.

WORK OUT – the Open gymnasium

The sky around ensures you will have more than one reason to sweat it out. Weight training, circuit training and cardio facilities aside, the open gymnasium will be equipped with the perfect blend of greenery and fitness expertise, to complement your demanding routine. Getting in shape will soon be a walk in the park.

A greenhouse amidst yours.

EARTH QUARTERS – the Herbarium

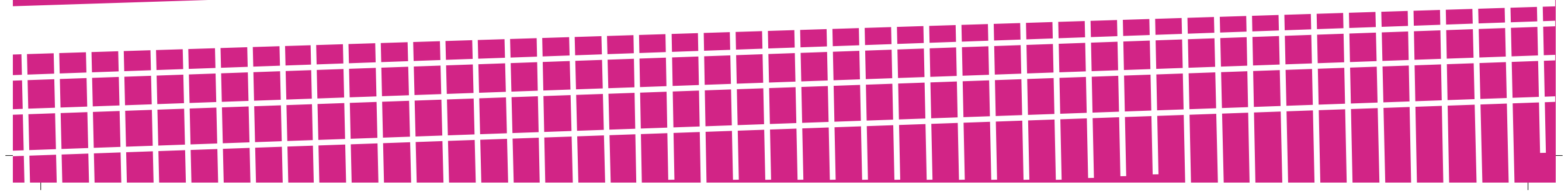
Your interest in botany will peak when you walk into the exotic herbarium. As a proud patron of this fauna collective, you will see a variety of tropical shrubs, herbs and plants under the same roof. And it won't be long before everything you learnt from text books comes to life before your eyes.



The ball is in your court.

GREEN ACES – the Tennis court

Whether it is your daily exercise or a weekend ritual, this thoughtfully designed tennis court is always at your service. Rallies and volleys aside, its sheer vastness and features will ensure mental and physical fitness. So come stretch your limbs and prepare to stun your opponents as you ace your every move.







Starry nights, bright laughs.

PERENNIALS — the Event lawns

Deck up in your fanciest attire and prepare to make an appearance as you step into the beautiful lawns only a few floors below. These lawns make for the perfect hosts so you don't have to worry about a single thing, except perhaps, enjoying yourself too much. Never mind the occasion for celebration, because every day is a party when you're under the stars.





Where trees are parked & cars invisible.

CAMOUFLAGE – the Parking tower

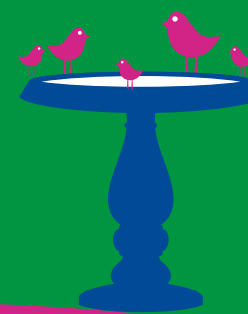
Basement and automated car parking

WISE OAK – the Senior citizens' area

You're never too old to chase butterflies. If you fancy a serene ambience and the sight of beautiful fountains, this is perhaps what you've been looking for all along.

QUENCH – the Bird bath

If the sight of exotic birds enjoying a dip brings you joy, then there's no better place for you to be. This bird bath is sure to awaken your inner child as you follow the rhythmic patterns of fluttering wings.





PERGOLA

At Seasons, we take architecture to great heights and often, beautiful ones. This garden feature acts as a shaded walkway, passageway, or simply a sitting area of pillars. So now your special conversations over tea will only find more warmth and comfort under its shade.



WONDERLAND – the Childrens' play area

Who knew a sandbox could unify your child's imagination with reality? It's where rockets, castles, spaceships and kingdoms will come alive on a different backdrop every single day. Where they'll grow up creating some of their best memories and maybe, even, some best friends for life.



LAIR – the Indoor games room

Sometimes the best way to enjoy the outdoors is by taking a step inside. And what could be better than a warm mug of your favourite beverage and some fantastic indoor games on lazy weekends? With carom, chess and table tennis facilities, you can one-up your skills, and as a bonus, effortlessly unwind.



Enjoy every amenity nature has to offer.

Wooden treetop walk

Treehouse

Open gymnasium

Airy library

Mini golf

Herbarium

Butterfly garden

Swimming pool

Bicycle track

Box cricket

Senior citizens' area

Childrens' play area

Tennis court

Indoor games room

Clubhouse

Spa

Yoga room

Barbeque area

Bird bath

Event lawns

Pergola

Multipurpose courts

Zen garden

Amphitheatre

Basketball court

Jogging track

And many more



Meet the makers.

- Formerly known as Akruti City Ltd, Hubtown Ltd is one of the leading real estate development companies in India with a primary focus on the Mumbai Metropolitan region and implements projects directly, through subsidiaries, associates and Joint Ventures
- Hubtown is a pioneer in the field of Slum Rehabilitation and has constructed and handed over more than 13,000 homes free of cost to slum families
- Hubtown is also a pioneer in the field of Public-Private-Partnership (PPP) projects, and has stake in 3 major ongoing PPP projects with the Government of Maharashtra and 4 major ongoing PPP projects with the Government of Gujarat
- In the Commercial Real Estate Segment, Hubtown group builds, leases and / or sells spaces including office towers and IT Parks
- In the Residential Segment, Hubtown group develops projects ranging from one-bedroom flats to high-end residences
- Hubtown group has developed approx. 14 million sq. ft. area till date and robust pipeline of ongoing and upcoming projects with a saleable area of more than 45 million square feet over the next 5-6 years



Hubtown Solaris, Andheri East



Hubtown Premiere Residences, Andheri West



Hubtown Sunstone, Bandra Annexe



25 South, Prabhadevi



Site: Hubtown Seasons, Near Fine Arts Cultural Society, Chembur Monorail Station
Opposite Jain Temple, Chembur (East) Mumbai – 400071.

www.hubtown.co.in



MahaRERA Registration No: Black Forest: P51800008552 | Czarnowoo: P51800003012 | Daintree: P51800002373 | Ecadour Cloud: P51800004432
Wing I: P51800002350. Available at website <https://maharera.mahaonline.gov.in>

Disclaimer: The entire Common facilities, Amenities and Clubhouse facilities displayed in this brochure and otherwise in any communication shall be ready only at the time of completion of the entire development of the project/completion of the last building to be developed in the project. The likely date of completion of the Amenities / Common facilities / Clubhouse is as per what is registered as per the date of completion registered with MahaRERA Authority. The Allottee, if opts to Purchase a unit, is aware that the amenities will not necessarily be handed over with the apartment and he/she/they will not raise any claim/compensation in respect of non-availability / delivery of such Common facilities, Amenities, Clubhouse as shown in the brochure. The pictorial depiction of the amenities are indicative in nature and do not represent the final look, feel and size of the amenities which shall be provided.