



SITE: CTS 194(A) part, Savitribai Phule Nagar, Near Ghatkopar Bus Depot, Pantnagar, Ghatkopar (E), Mumbai - 400075

Coming up at a strategic destination in Ghatkopar, Sofrance is centrally located, bearing close connectivity to Central, Western and Navi Mumbai. Ghatkopar station, metro station, bus depot are nearby with the airport at a distance of 10 kms. The proposed exit of E.E Freeway on Ghatkopar-Mankhurd Link Road will make connectivity to Fort and Nariman Point easier. Sofrance also enjoys close proximity to academic institutions, medical facilities, shopping and entertainment centres, along with a neighborhood of neo-rich habitation and a happening business environment, in heed of all your business and lifestyle needs.

DEVELOPERS:



A/10, Anand Bhuvan, H. D. Road, Near Bata Showroom, Ghatkopar (W), Mumbai - 400086  
 Tel. : 09920739768 Email : info@dagadev.com website : www.dagadev.com

ARCHITECT Sanjay Joshi & Associates	CONSULTING ARCHITECT Lokhandwalla F. T.	RCC CONSULTANT Vinayak Chapdekar & Associates	LEGAL ADVISOR Law Firm of Khona	DESIGNING ARCHITECT DOT Architects
--	--	--	------------------------------------	---------------------------------------

www.omniscent.in t 9223424354



  
**SOFRANCE**  
It's all right here....

*A lifetime of prosperity...*

Playing along to the call for an identity that's unique, Daga Developers bring to you Sofrance, a transition all set to add tribute to the booming Ghatkopar skyline. Sofrance offers an enterprising new mixture in the indulgence of commerce and retail with luxe living. A well marked architectural diversity, it brings smooth symmetry to the well planned retail shops on the ground level and thoughtfully planned residences and offices on the upper floors, rendering a modern vista to complement an uber lifestyle.



GROUND FLOOR PLAN



Sofrance offer well designed homes along with well planned shops on ground floor. Strategically located these road facing shops are ideally suitable for grocery, medical store, ready made garments etc. which will take care of the needs of the residents of that locality.

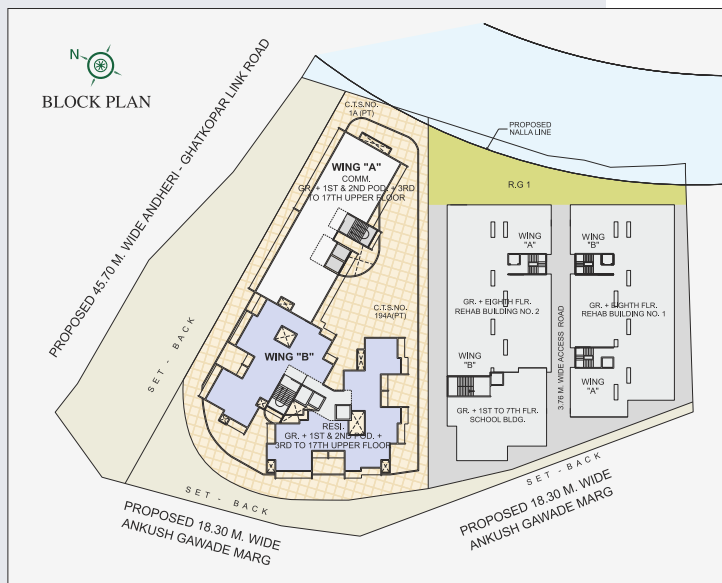


*Love the way you live...*

Give flight to all your happiness and well bestowed promises for the future at Sofrance, a dreamy paradise of exquisite detailed 1 and 2 BHK abodes. The homes with their optimally laid out interiors, modern facilities and striking spaces truly make these abodes premier quality residences. At Sofrance you learn to cherish life with a thriving culture of luxury living coupled with shopping delights and every other whim that brings you closer to your lifestyle aspirations.

  
SOFRANCE  
RESIDENCES

*Spaces that invite you to step in*



**SOFRANCE**  
RESIDENCES



2BHK



1BHK





  
**SOFRANCE**  
RESIDENCES

*Live life extraordinaire....*

**Structure:** RCC framed structure with earthquake resistant design as per relevant I.S. Code.

**Entrance Lobby:** Well designed Entrance lobby.

**Lifts:** Lifts of Reputed make.

**Parking:** Adequate Car Parking

**Security:** Intercom facility

**Flooring:** 2' x 2' Vitrified tiles in Entire Flat.

**Kitchen:** Granite top kitchen platform with S. S. Sink. Dado with colour glazed tiles up to door height level above kitchen platform.

**Toilets:** Flooring with anti-skid ceramic tiles and Dado with glazed tiles up to 7' height. Concealed plumbing with premium quality sanitary ware and CP fittings.

**Walls:** Internal walls and ceiling finished with gypsum plaster and premium quality paint.

External walls of the building finished with double coat sand faced plaster with premium quality water repellent paint.

**Windows:** Heavy section anodized aluminium sliding windows.

**Electrification:** Concealed copper wiring with adequate points.

  
SOFRANCE  
WORKSPACES

*The signature of success.*

Architecturally diversified from its residential counterpart, this façade of Sofrance comes veneered behind exquisitely appointed glass frontage that house retail office spaces. Well appointed, spacious and ultra modern, these spaces are all that commercial centres aspire to be. Intelligently enabled workspaces and strategic location make sure that your business charts its own success story. These office spaces provide the perfect pitch for far sighted businesses and establishing itself as a premium commercial destination for all your business needs.

**Flooring:** Vitrified tiles in Offices.

**W.C.:** Ceramic tile flooring with sanitary ware of reputed make.

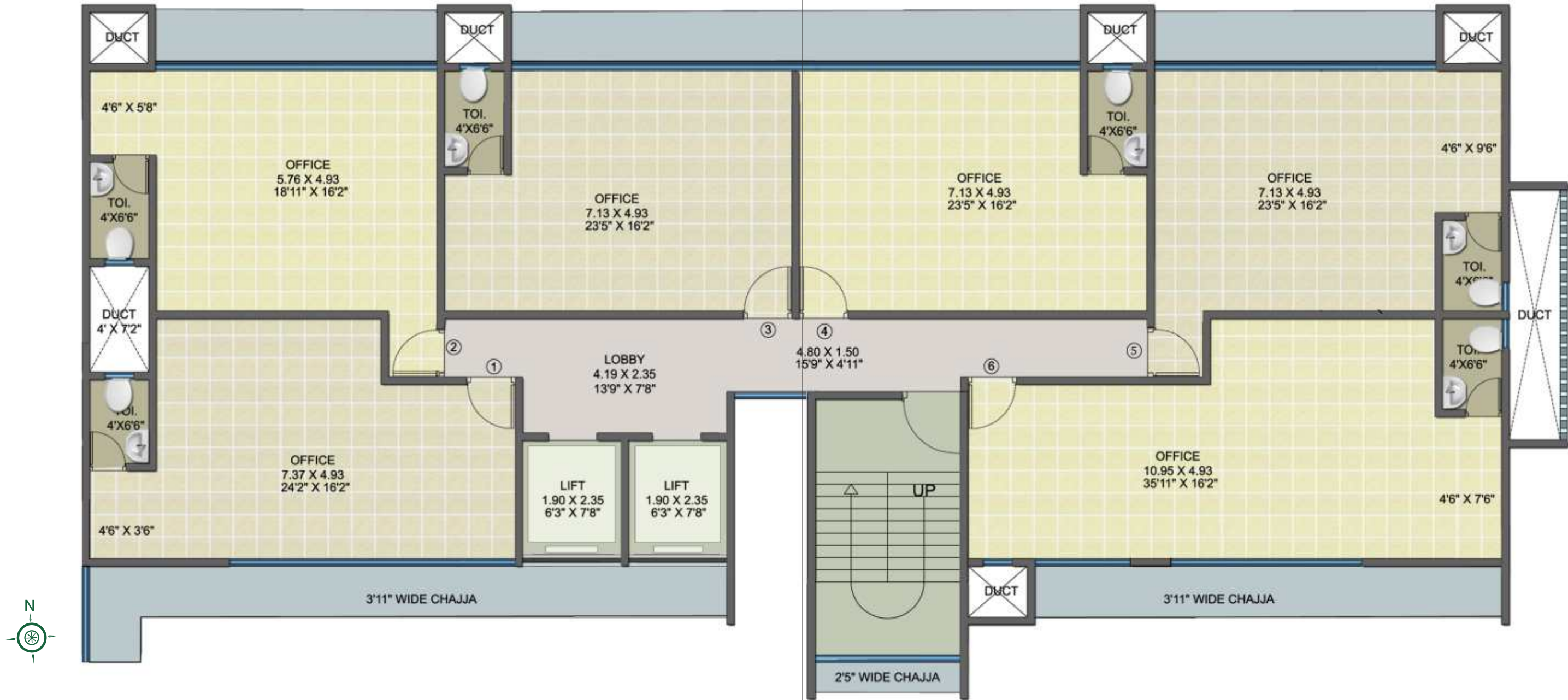
**Lobby:** Decorative Entrance Lobby with Marble / Granite in Lift Lobby on each floor.

**Lift:** Lift of reputed make.

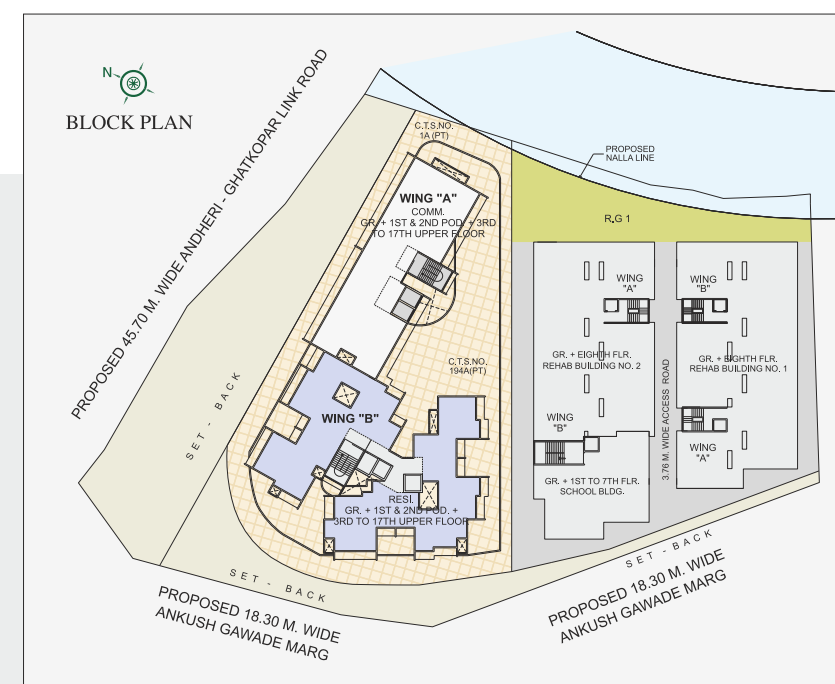
**Security:** Provision for CCTV & Intercom facility.







*Spaces where ideas meet ambitions*



**SOFRANCE**  
WORKSPACES



SOFRANCE

It's all right here....

