

RAVIRAJ HOUSING
BUILDERS & DEVELOPERS

Project Name: Raviraj Spring

Developers: Raviraj Housing

A/ 101, Radharaman Apartments, Bapu Bhagve Road, Kandarpada, Dahisar
(W), Mumbai- 400 068

Architect & R.C.C. Consultant: Anish & Associate


Raviraj
Spring

Experience the colours of Happiness



Happiness
in full Bloom



When convenience whispers, peace sings, comfort harmonizes and life tunes in! Welcome to Raviraj Tarang, a signature project by Raviraj Developers that offers impeccable calmness amidst the center of the city. Unbelievable but true! Situated in bustling suburb of Dahisar, a stone's throw away from Dahisar railway station, Raviraj Tarang offers a lifestyle living where you can relax within the lush green landscapes especially designed to gift you the much coveted serenity. Health & Fitness will become your TOP priority with roof top jogging track and hi tech club house with gymnasium and spa. You can immerse in a book and cappuccino at your open air cafeteria. We believe happiness shouldn't have limitations and hence we have spacious living areas with loft for you. With most international schools, hospitals and malls in near vicinity, life couldn't get better. We call it enhanced living or Raviraj Tarang experience which is unparalleled in its class!

Builder **M/s Raviraj Housing (Prince City)**
Architect **Anish & Associates**
Design Architect **Anish & Associates**
Legal Advisor **S.D. Mishra**
RCC Consultant **Anish & Associates**



Amenities

- Ample car parking space
- CCTV Camera Surveillance
- Intercom Facility in each flat
- High Speed Elevators
- Stylish Lobby & Elegant Elevation
- Piped Gas Connection
- 100% power backup for essentials in common areas



Specifications

- Vitrified tiles flooring
- Intelligent electrical layout with adequate points
- TV & Telephone points in living room & bedrooms
- Sliding windows of color anodized section with tinted glass
- Laminated finish doors & main door with quality brass fittings & locks
- Plaster of Paris on walls with premium quality paint in all rooms
- Granite kitchen platform with separate cooking & service platform with stainless steel sink
- Full tiles dada kitchen
- Piped gas connection
- Designer tiles in bathroom & W.C.

*Explore a Lifestyle
of Comfort, Peace and Serenity*





Typical Floor Plan



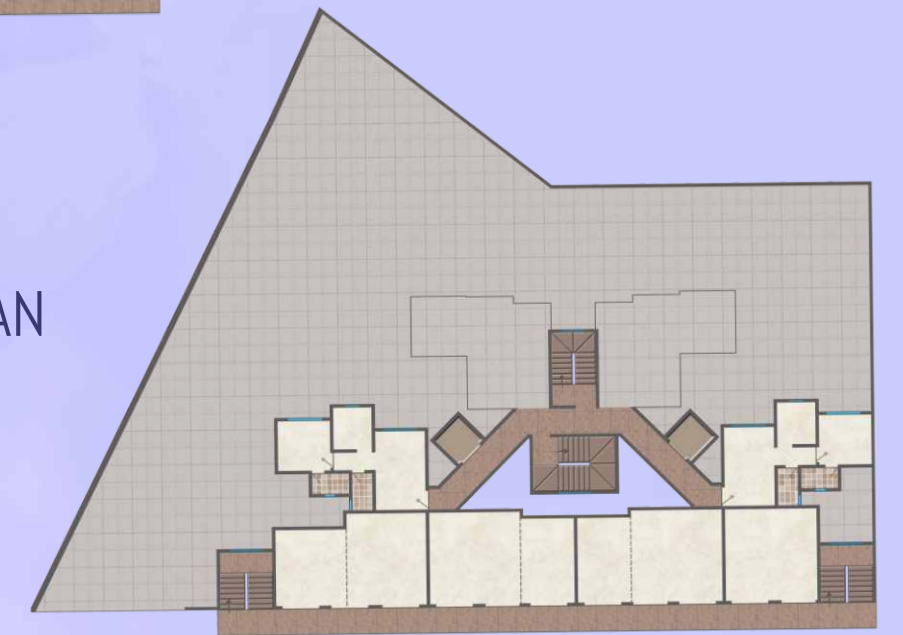
Vicinity

-  Easy Connectivity to National Highway
-  Easy Connectivity to Malls & Mutliplexes
-  International Schools
-  Banks
-  Temples



1 FLOOR PLAN

GROUND FLOOR PLAN



TYPICAL FLOOR PLAN