



CASA SUPREMO

LIFE AT ITS FINEST.

THE WORLD'S
FINEST DEVELOPMENTS.
BROUGHT TO YOU BY
INDIA'S LARGEST
REAL ESTATE DEVELOPER.

From India's most iconic addresses to London's most coveted residences. From offices for the cream of the corporate world, to the homes of society's elite. From adding glittering icons to Mumbai's skyline to conceiving India's smartest and most livable city.^ One name has been transforming the way we live with landmarks on par with the world's best – Lodha.

Our passion is to create landmarks that are benchmarked against the highest global standards, epitomise the values of our family, and are built on a legacy of trust spanning 4 decades. In keeping with our belief that 'Every Indian deserves a high-quality home,' and our vision to build a better India, every one of our developments delivers the highest level of design and craftsmanship, uncompromising quality, and unparalleled service – putting Lodha developments in the same league as the world's finest.

Today, Lodha is India's No. 1 real estate developer.* The company has clocked sales of over ₹50,000 crore in last 7 years. We have delivered an area of 8 crore sq. ft.** and have 40 ongoing projects and 23 planned projects.^ Our team of 3,000 associates works relentlessly to create developments of exceptional quality, and is committed to delivering the world's finest homes, offices, and retail spaces.

Our vision of 'Building a Better Life' extends across geographies, markets, price points and consumer segments. By forging the finest global partnerships, deploying the best people and processes, being nimble in delivering our customers' needs, and benchmarking against the highest global standards, Lodha has been able to create some of the world's finest developments – with self-contained eco-systems, great outdoor spaces, and robust infrastructure, offering every facility and convenience at one's doorstep.

Our ability to deliver scale, our innovative design, superior execution, differentiated branding and marketing, coupled with our efficient and enthusiastic on-ground sales staff, all come together to create the best value for our customers across residential, retail and office spaces – winning their trust and appreciation, time after time.

More importantly, we have the scale, capability, and resolve to create a lasting and positive impact on our planet, and our society. We are committed to being a net zero carbon emission company by 2035. Through the Lodha Foundation, we actively contribute to our communities and nation building. With our commitment to act in the larger interest of the environment and society, we are 'building a better life' in more ways than one.

*By sales FY14-21.

**80 million or ~8 crore square feet completed till Oct 2021.

^Based on livability quotient ranking by JLL in its 'Livability Quotient – A Paradigm Shift in India's Emerging Cities' Report

^^As of 31st December, 2021



Lodha Altamount

The finest residences on Mumbai's Billionaire Row



The World Towers

One of India's most iconic addresses



No.1 Grosvenor Square

The world's most desirable address ncp, trump, park, palava



NET POSITIVE.
BECAUSE TOMORROW
SHOULD BE BETTER
THAN TODAY.

Buildings and infrastructure can leave an imprint on the planet that can last for decades – much longer than cars or electronic devices. This is why, building smartly and sustainably is the key to ensuring a better world for us and future generations. As India's No.1 developer, we have taken the lead to ensure that our impact on our environment and society is net positive.



ADVANCED TECHNOLOGIES

At Lodha, we deliver the world's finest developments by working with the best and brightest across the globe and implementing cutting-edge technology. We follow the renowned Total Quality Management (TQM) system, and use 3D computer generated models (BIM) which allows a smarter and faster design process, and intricate planning and visualisation. We use AI to glean new findings from our data, and use aluminium formwork technology to make our structures highly durable and resistant to seismic activities. We also use pre-fab units like doors and windows to reduce manual intervention and improve quality. Everything, from conception to construction, is supported by a series of intelligent and innovative processes.

NET ZERO CARBON BY 2035

Lodha is committed to reducing its scope 1 and 2 carbon emissions significantly, and intends to be a net zero carbon emissions company by 2035. We are also committed to 100% waste water recycling across our developments, relying more on green power, and increasing the tree cover of every site we acquire. We are working closely with global experts, including the Rocky Mountain Institute (Colorado, USA) to achieve these goals and set a global benchmark for sustainable development.

SOCIAL HOUSING

We are building hundreds of homes, which will be given to families in need at a nominal cost. The desire for home ownership is universal and by offering good quality housing to the weakest economic strata, we aim to create a more equal society.

HIGHEST STANDARDS OF HEALTH AND SAFETY

The world's finest developments are built by individuals who stop at nothing to ensure that every detail is perfect. To us, our highest priority is our customers' health and well-being. Our efforts to surpass standards have resulted in Lodha being recognised for best-in-industry practices by bodies like BSI for Occupational Health & Safety Management System (OSHAS).

THE JOYOUS
LODHA LIFE



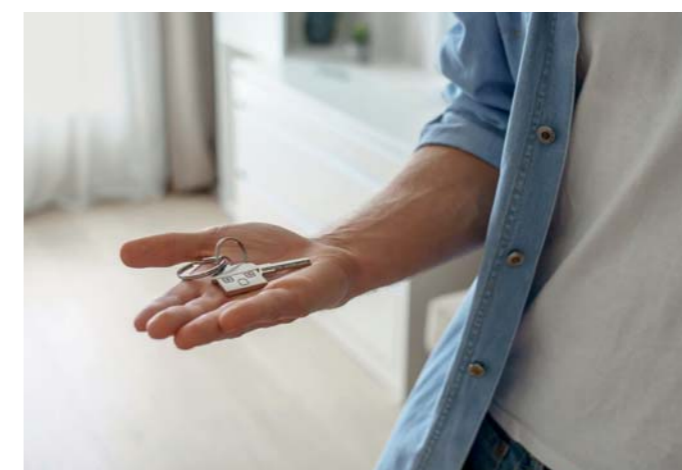
DESIGNED TO ORCHESTRATE A SEAMLESS LIFE.

Our passion is to understand where design meets well-being, and to deliver the highest level of features, amenities, and open green spaces, to ensure your holistic happiness and productivity. Every aspect – from excellently connected locations to carefully designed residences – is thought of so you can spend your time meaningfully, and create joyful memories in the company of your loved ones.



SERVICES THAT REVOLVE AROUND YOU.

Lodha homes provide a rich and joyous experience at every level, and residents enjoy our world-class service standards right from the very beginning. Right from easing your transition into your new residence and fixing every issue to curating events and experiences to delight your family. Everything is thought through in a manner that ensures you lead an enriched and empowered lifestyle.



A BADGE OF PRESTIGE.

When you live in a home delivered by India's No.1 real estate developer, you can be certain of world-class design, the highest standards of quality and service, and a space that is thoughtfully designed to ensure your holistic well-being. In a Lodha residence, you can live joyfully and with a sense of pride, knowing you live in a home that meets international standards.

THE FINEST LIFESTYLE. FOR THE FINEST FAMILIES.

Presenting Casa Supremo – a rare development offering its residents a lifestyle at par with excellence. Comprising 2 exclusive towers of 2 and 3-bed homes. Strategically located near GCC club, Mira Road, it gives access to large open spaces, along with stunning views of Vasai Creek, designed only for select families, in search of a supreme lifestyle. Spacious homes, airy decks, and abundant joy. All backed by the pride and prestige of living in a landmark development created by Lodha – India's No.1 real estate developer.





Lavish living room of the show residence. Shot on location.

SPACIOUS HOMES. FOR NEVER-ENDING MEMORIES.

Casa Supremo presents well-designed homes with lavish sundecks; a rare privilege for a select few, at Mira Road. Panoramic vistas* of the glittering Vasai Creek* greet you as you step onto your sundeck with your morning cuppa. While a gorgeous stream of sunlight and fresh air pour in to your home through your French windows.

Designed to minimise wastage and give you the luxury of extra space, these fully air-conditioned^^ 2 & 3-bedroom apartments are thoughtfully planned and exquisitely crafted. Each bedroom is perfectly complemented with ample wardrobe space, so your home stays well-organised and uncluttered.

- Sundeck* attached to living room with French windows
- Views of Vasai creek*
- L-shaped living and dining with marbital® flooring
- Optimal space planning with minimum passage
- Full-height windows for maximum light
- Fully air conditioned^^ homes
- Separate utility area* finished in antiskid ceramic flooring
- Separate wardrobe space in bedroom for better space utilization
- Provision for cable, telephone and internet connectivity**
- Provision for fibre optic (FTTH) and direct to home (DTH)**

SAVOUR THE BREEZE. DEVOUR THE VIEWS#.

Your apartment comes with full-height windows and grand decks, offering you stunning views of the shimmering Vasai Creek*, stretching right up to the horizon. Grand windows invite a gentle breeze that tingle the senses, while ample sunlight bathes you in Vitamin D – now, isn't that a great way to start the day?





Grand sundecks. Artist's impression.

LIVE, WORK, PLAY - FROM DECK.

Wide decks serve as the sweetest spot in your abode. Delivering gorgeous views, and acting as an office space, yoga corner, chatty nook or space of solace – whatever you please. Gifting you a priceless corner, reserved for the finest families – a privilege craved by most.



FINISHED WITH FINESSE.

Your grand apartment is embellished with the finest fittings, from branded flooring to designer finishes in every corner of your home. Everything, bearing in mind the finer details.

- Kitchen finished with vitrified tiles
- Granite platform and Futura/ Nirali® SS sink
- Marbital® flooring in bedrooms and passage
- Gas leak detector in kitchen
- Toilets finished in designer tiles
- Duravit®/Kohler®/ Roca® sanitary ware in all bathrooms
- Kohler®/ Isenberg®/ Roca®/ Jaguar® CP fittings in all bathrooms



Lavish living room. Artist's impression.

TOWERING ABOVE ALL ELSE.

The twin towers at Lodha Supremo greet you with luxury from the moment you step in. Designer tiles welcome you into the grand lobby. High-speed elevators wait patiently to whisk you away from the ground floor foyer to your residence lobby. Not to mention, there's a state-of-the-art fire-fighting system, power back-ups, and parking slots - every system designed and developed to ensure you live the finest life. Afterall, the finest families would expect nothing less.

- Grand entrance lobby on ground floor with designer finishes
- Typical floor lobby with designer tiles
- Power back-up for common area lighting, elevators and water supply system
- 2 high-speed elevators including one stretcher elevator from Thyssenkrupp®/ Otis®/ Kone®/ Schindler®
- 1 separate service/ fire elevator at mid-landing from Thyssenkrupp®/ Otis®/ Kone®/ Schindler®
- State-of-the-art fire firefighting system
- Ample parking in MLCP
- EV charging points for electric vehicles**





JOIN THE CLUB. (NOT EVERYBODY CAN.)

Your clubhouse at Casa Supremo plays host to all your whims and desires. Enjoy a boy's night out over a few rounds of pool or a candlelit dinner with the missus. Pump iron at the world-class gym to stay in top shape. De-stress with a game of carrom or chess with the kids, or throw a big bash on your anniversary for your friends and family at the banquet hall. Spread across ~3500 sq.ft., it serves as the perfect place to elevate your lifestyle, among a like-minded community that you can relate to and bond with.

- Gymnasium
- Indoor games area with table tennis, carrom and chess, pool table
- Banquet/ multipurpose hall

LARGE SPORTS GROUND. (WE TAKE PLAY TIME VERY SERIOUSLY.)

Casa Supremo offers an assortment of activities for you to indulge in, rejuvenate, and stay in top shape. A meadow trail for a jog, with background scores written by nature. An exclusive pool to recharge your muscles. A cricket practise net for every little Kohli, and a sports lawn for every budding Ronaldo. Unless, you'd rather indulge in a lazy brunch with family and friends on the open lawns. And for the end of the day, a meditation hall to contemplate your new life, with a Ganesha temple to count your blessings.

- Swimming pool with deck
- Outdoor kid's play area
- Sports ground/ lawn
- Meditation garden
- Ganesh temple
- Seating pavilion
- Jogging/Walking track



Multipurpose sports ground. Artist's impression



Ganesha temple. Artist's impression.



Designer wing lobby. Artist's impression.



THE FINEST HOMES. THE STRICTEST SECURITY.

Casa Supremo is a gated development, restricting access to the reserved few. Designed with the best-in-class security, so each nook is monitored with utmost vigilance. Prodding you on to enjoy a carefree life, knowing someone has your back at all times.

Advanced best-in-class multi-tier security:

- Access control at entrance lobby on the ground floor
- CCTV monitoring for key common areas
- Intercom for each residence

COMMUTE THE COMMUTE.

Casa Supremo is strategically located, at the centre of everything and keeping your world within your reach. Drop off your kids at the international school right in your neighbourhood. Access the Western Express Highway that instantly patches you into corporate business hubs in MMR. And in the evening, swing by a plush mall around the corner, or drop by a gourmet store, to pick up your essentials or indulge your taste. With the railway station and upcoming metro just a few minutes away, you'll have easy access to any part of the city.



Connectivity

- Mira Road Station
- Western Express Highway
- Upcoming Metro



Schools:

- Podar International School
- Vedant International School
- Singapore International School
- N.L. Dalmia Inst. of Management
- GCC International School



Business Hubs:

- Nesco and Mindspace Malad
- G.Corp Tech Park, Thane



Malls:

- Star Bazaar
- D-Mart
- Reliance Trends
- Thakur Mall



Hospitals:

- Wockhardt Hospital
- Thunga Hospital

MASTER PLAN

- 01. Entrance plaza
- 02. Drop-off
- 03. Jogging/ walking track
- 04. Swimming pool
- 05. Pool deck
- 06. Pavilion
- 07. Sports ground/ lawn
- 08. Club House
- 09. Ganesha temple
- 10. MLCP
- 11. Meditation garden
- 12. Kid's play area
- 13. Wing A
- 14. Wing B
- 15. Retail

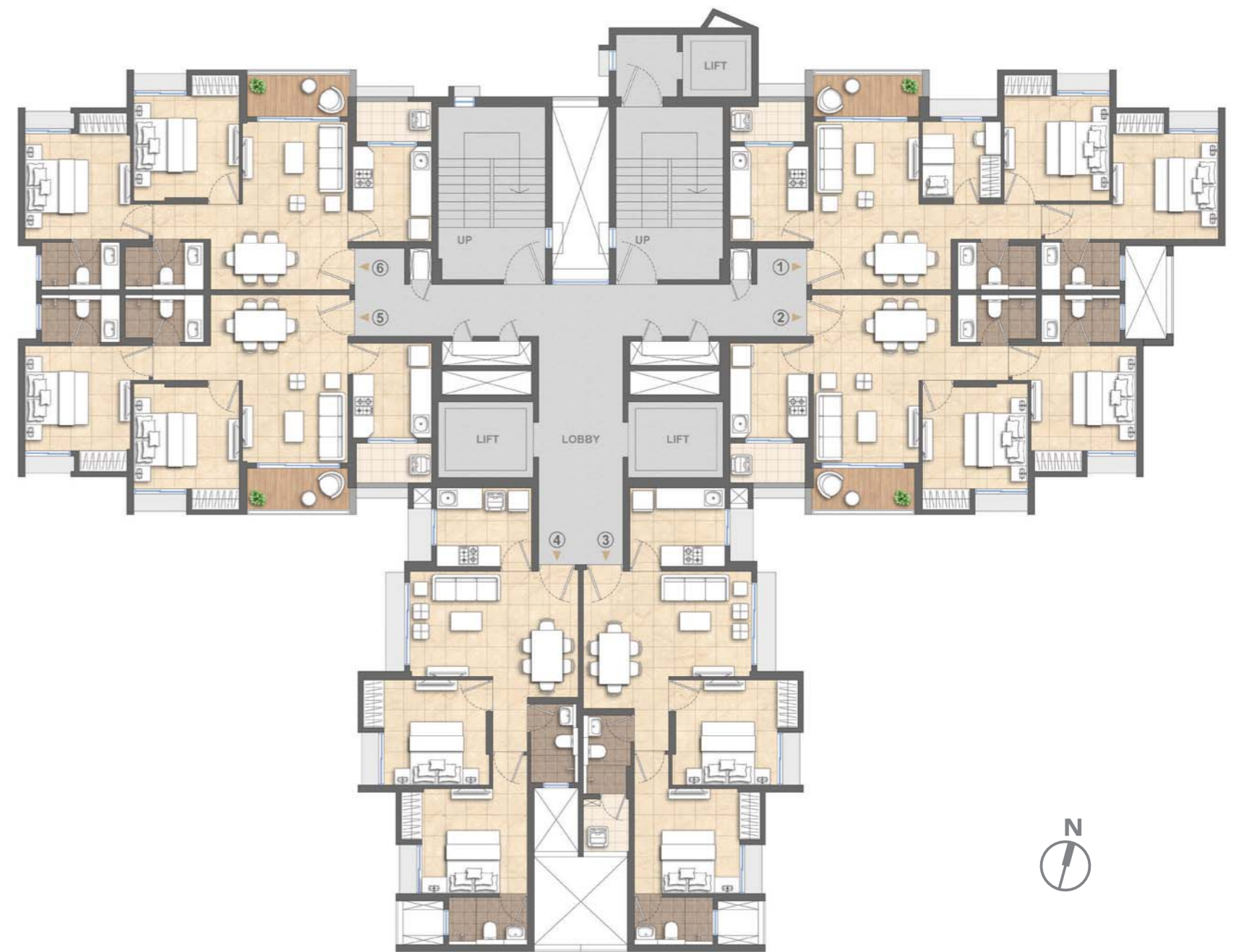


FLOOR PLANS

TYPICAL FLOOR PLAN - WING A



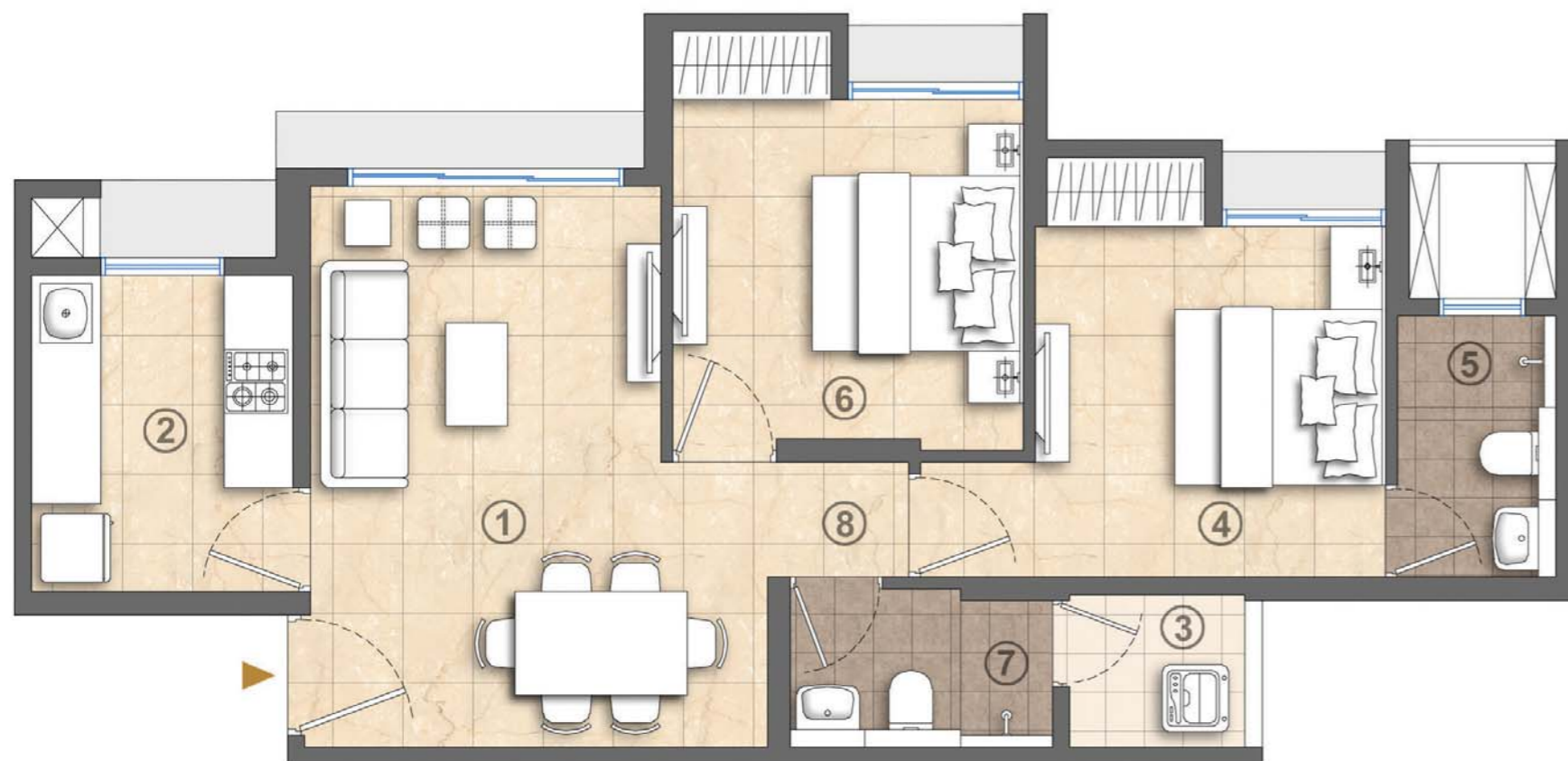
TYPICAL FLOOR PLAN - WING B



2 BHK ULTIMA

Legend

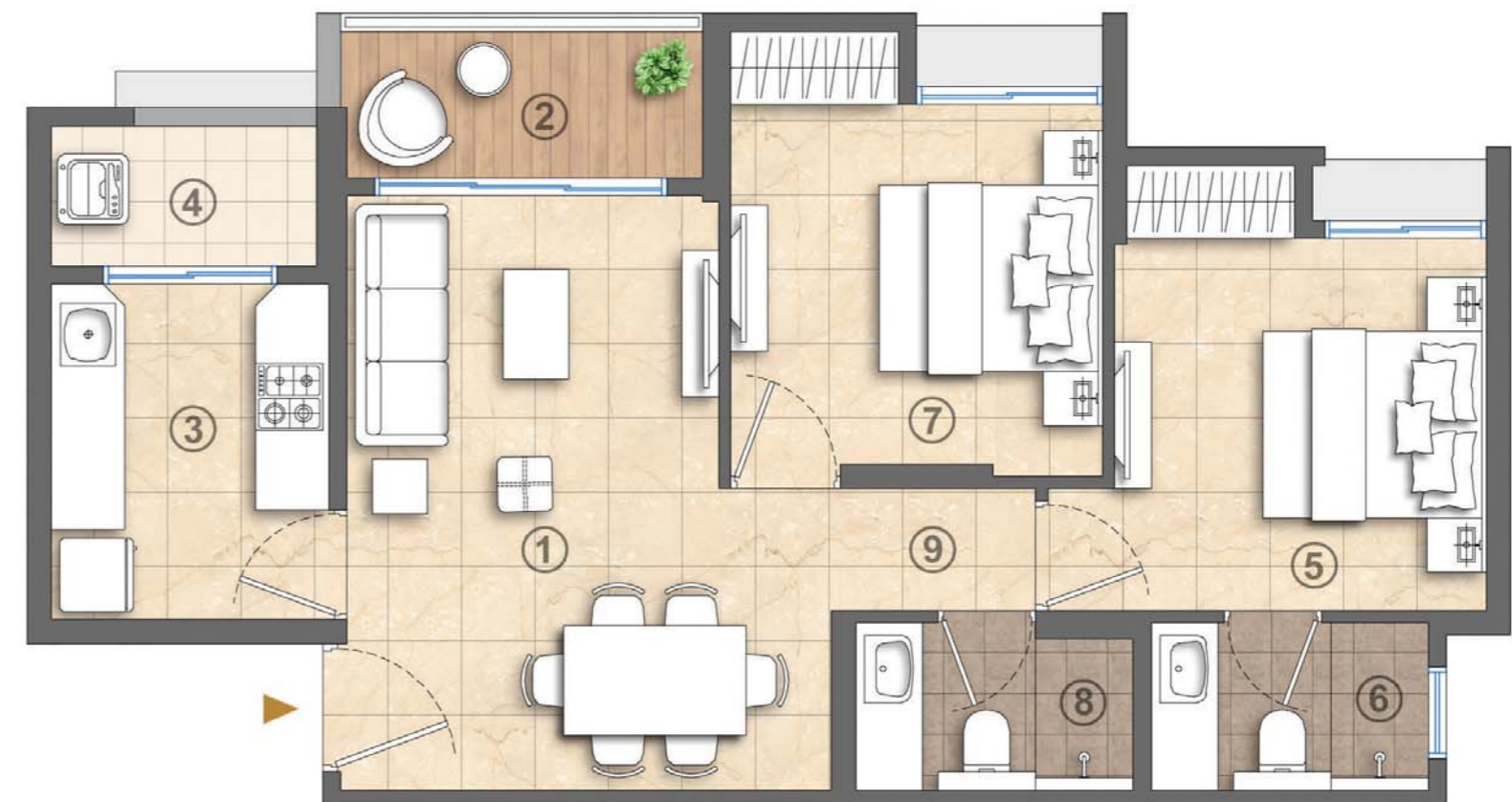
- 1 Living / Dining : 10' X 16' + 3' X 8'
- 2 Kitchen : 7' 6" X 9'
- 3 Utility : 5' X 4'4"
- 4 Master Bedroom : 10' X 10' + 4'6" X 2'
- 5 Master Toilet : 4' 6" X 7'6"
- 6 Bedroom 2 : 10' X 10' + 4'6" X 2'
- 7 Toilet 2 : 7' 6" X 4'6"
- 8 Passage : 3' 3" Wide



2 BHK ULTIMA WITH DECK

Legend

- 1 Living / Dining : 10' X 16' + 3' X 8'
- 2 Deck : 9' 9" X 4'
- 3 Kitchen : 7' 6" X 9'
- 4 Utility : 7' 2" X 3'9"
- 5 Master Bedroom : 10' X 10' + 4'6" X 2'
- 6 Master Toilet : 7' 6" X 4'6"
- 7 Bedroom 2 : 10' X 10' + 4'6" X 2'
- 8 Toilet 2 : 7' 6" X 4'6"
- 9 Passage : 3' 3" Wide

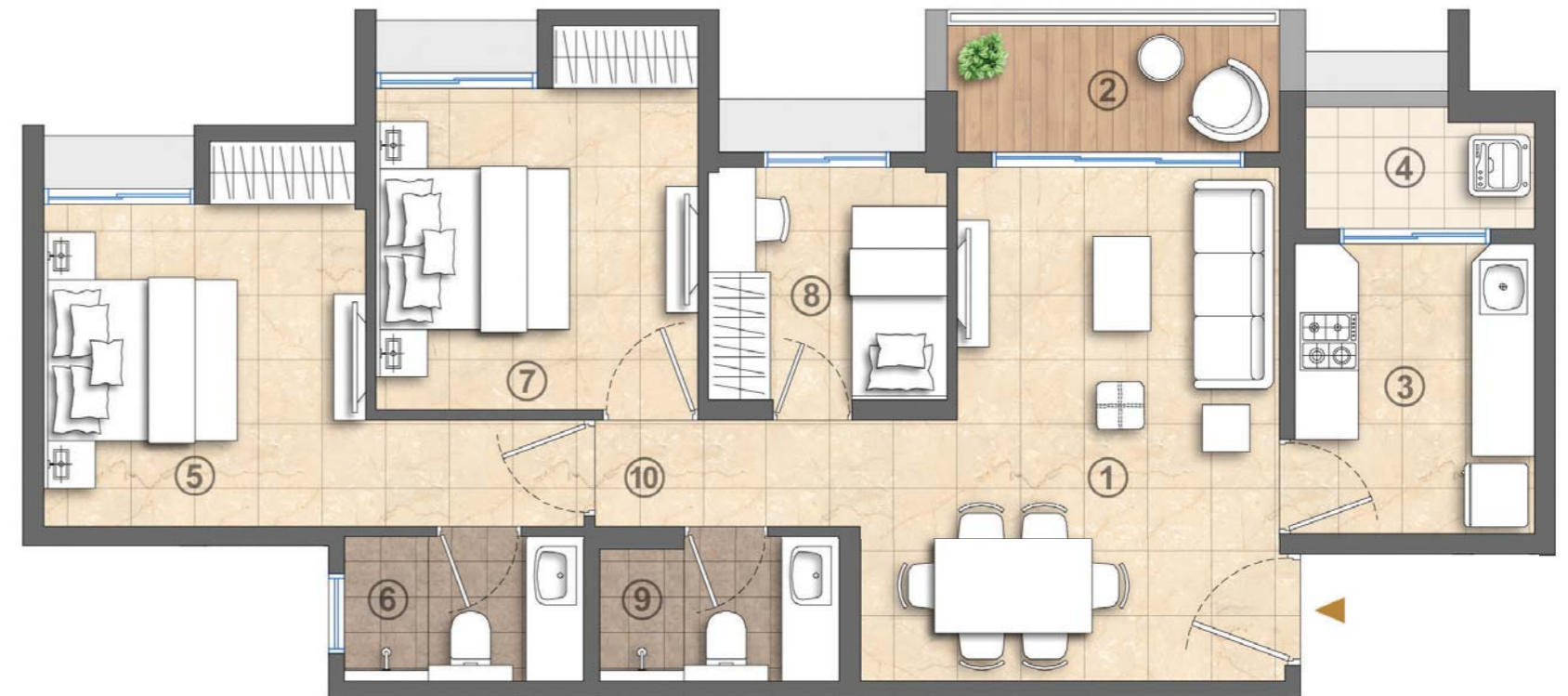


UNIT PLANS

3 BHK OPTIMA

Legend

- 1 Living / Dining : 10' X 16' + 3' X 8'
- 2 Deck : 10'4" X 4'
- 3 Kitchen : 7' 6" X 9'
- 4 Utility : 7' 2" X 3'9"
- 5 Master Bedroom : 10' X 10' + 4'6" X 2'
- 6 Master Toilet : 7' 6" X 4'6"
- 7 Bedroom 2 : 10' X 10' + 4'6" X 2'
- 8 Bedroom 3 : 7' 6" X 7'3"
- 9 Toilet 2 : 7' 6" X 4'6"
- 10 Passage : 3' 3" Wide



PROJECT PARTNERS

ARCHITECTURE

KAPADIA ASSOCIATES:

Since its inception in 1991, Kapadia Associates has constantly looked beyond the conventional, continuously exploring the uncharted terrain between architecture and design. As a professional architectural firm, it combines a deep design involvement for all projects with optimized managerial processes, to ensure the smooth running of projects from design to execution. The firm has won a number of prestigious awards.

LANDSCAPE DESIGN

PRABHAKAR BHAGWAT ASSOCIATES:

Arguably the most influential landscape design firm in India, the firm has been designing some of the nation's most remarkable landscapes for over 8 decades. It has defined and established several design typologies. The firm's work has been showcased in several national and international publications; it has also been the recipient of several international awards.

@ All brands stated above are subject to change with equivalent or better brands, at sole discretion of the Project Designers. | **Operated by third party; applicable charges apply.
*select units only | % Vitrified tiles with marble effect | ^^ Excluding kitchen, store, toilets, staff room and service areas | #Views vary based on unit floor and orientation.

The plans, layouts, specifications, images and other details herein are indicative and the developer/ owner reserves the right to change any or all of these in the interest of the development. Select fittings/ options may be available in limited units only or available at additional price and are not part of the standard unit. All brands mentioned herein may be replaced by equivalent or better brand(s) as decided by the project architect. The printed material does not constitute an offer and/ or contract of any type between the developer/ owner and the recipient; any sales/ lease of any unit in this development shall be solely governed by the terms of the agreement for sale/ lease entered into between the parties and no details mentioned in this printed material shall in any way govern such transaction. The dimensions and/ or areas stated in the plans are measured on basis of unfinished surfaces using polyline method and do not reflect the reduction in dimensions on account of the finishes being installed. Further, variance of +/-3% in the unit carpet area and/or unfinished dimensions is possible due to design and construction variances. The plans contained herein are typical unit/ floor plans – please verify exact plan and orientation of your unit before purchase. The garden units are entitled to exclusively use the area earmarked for private garden but ownership of the same shall be with the Ultimate Organization. The project has been registered via Maha RERA Registration No. P51700034071 available at website <http://maharera.mahaonline.gov.in>. Date of Printing: Mar'22



Life at its finest

SALES OFFICE: Lodha Sales Gallery, Opp, GCC Club Rd, Hatkesh Rd, Hatkesh Udhog Nagar, Mira Road, Mira Bhayandar, Maharashtra – 401107

CORPORATE OFFICE: Lodha Excelus Apollo Mills Compound, NM Joshi Marg, Mahalakshmi, Mumbai, Maharashtra – 400011.