



CityWalk

PROUDLY BROUGHT TO YOU BY:



WE COLLABORATE | WE INNOVATE | WE EXCEL

Karyan Infratech is backed by over 15 years of experience and expertise of the Karyan Group along with select promoters of the Saviour Group - premier real estate developers of Delhi/NCR, offering residential, commercial, retail projects and warehousing in PAN India.



*Happiness*  
ALL AROUND

Artistic Impression



## STUDIO LOTUS

NEW DELHI

# AWARD WINNING DESIGN FIRM

## DEVELOPED ULTRA MODERN FACADE FOR THE PROJECT

Studio Lotus is an international award-winning design firm. They master in planning, architecture and interiors of large-scale development and commercial spaces, hotels and resorts, government projects. The most significant clientele includes Max Estates, Royal Enfield, Godrej Properties, DLF, RAAS Group of Hotels, Taj Hotels, Radisson Hotels, Aloft Hotels, Oberoi Realty & many more renowned companies.

## A PLUS DESIGN ASSOCIATES

A Plus Design Associates is accomplished in the field of planning, design, and execution of urban projects. They have designed and built around 7 million sq. mtr. built-up area which includes townships, commercial complexes, residential developments, hospitals and entertainment centers.

## CESPL

With over 33 years of experience, in mechanical, electrical, plumbing, engineering design and consultancy, CESPL has handled more than 500 projects which include group housing, commercial, institutional and township planning projects.

Artistic Impression





# EXCELLING EXPECTATIONS



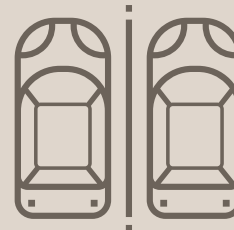
# LOCATED AT WAVE CITY WITH MODERN AMENITIES & STATE OF THE ART INFRASTRUCTURE



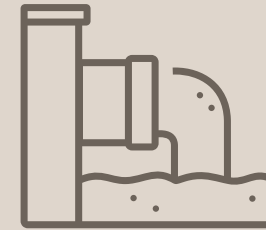
PRIME LOCATION  
AT NH-24  
14 LANE EXPRESSWAY



PREMIUM  
LIFESTYLE  
BRANDS



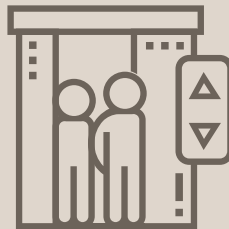
AMPLE CAR  
PARKING SPACE



RAIN WATER  
HARVESTING



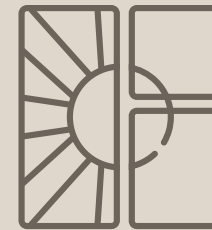
WIDE CORRIDORS



DEDICATED LIFTS  
& ESCALATORS



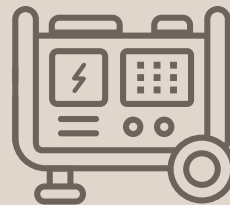
SURROUNDED BY  
DEVELOPED SECTORS



BEAUTIFULLY DESIGNED  
GLASS FACADE BY  
LOTUS DESIGN



LUSH GREEN  
LANDSCAPING

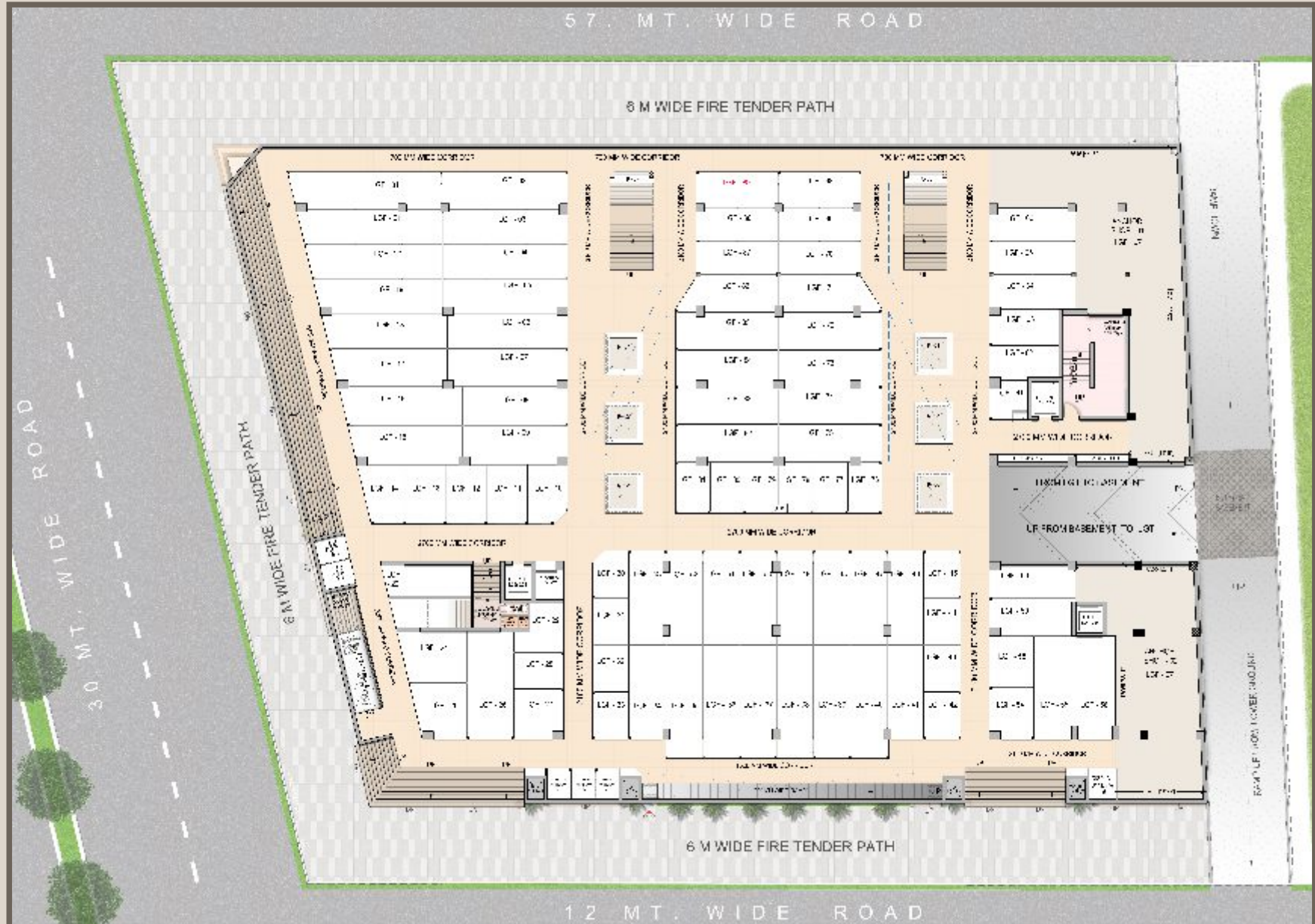


24X7  
POWER BACKUP



24X7 ADVANCED  
SECURITY

LOWER GROUND FLOOR PLAN

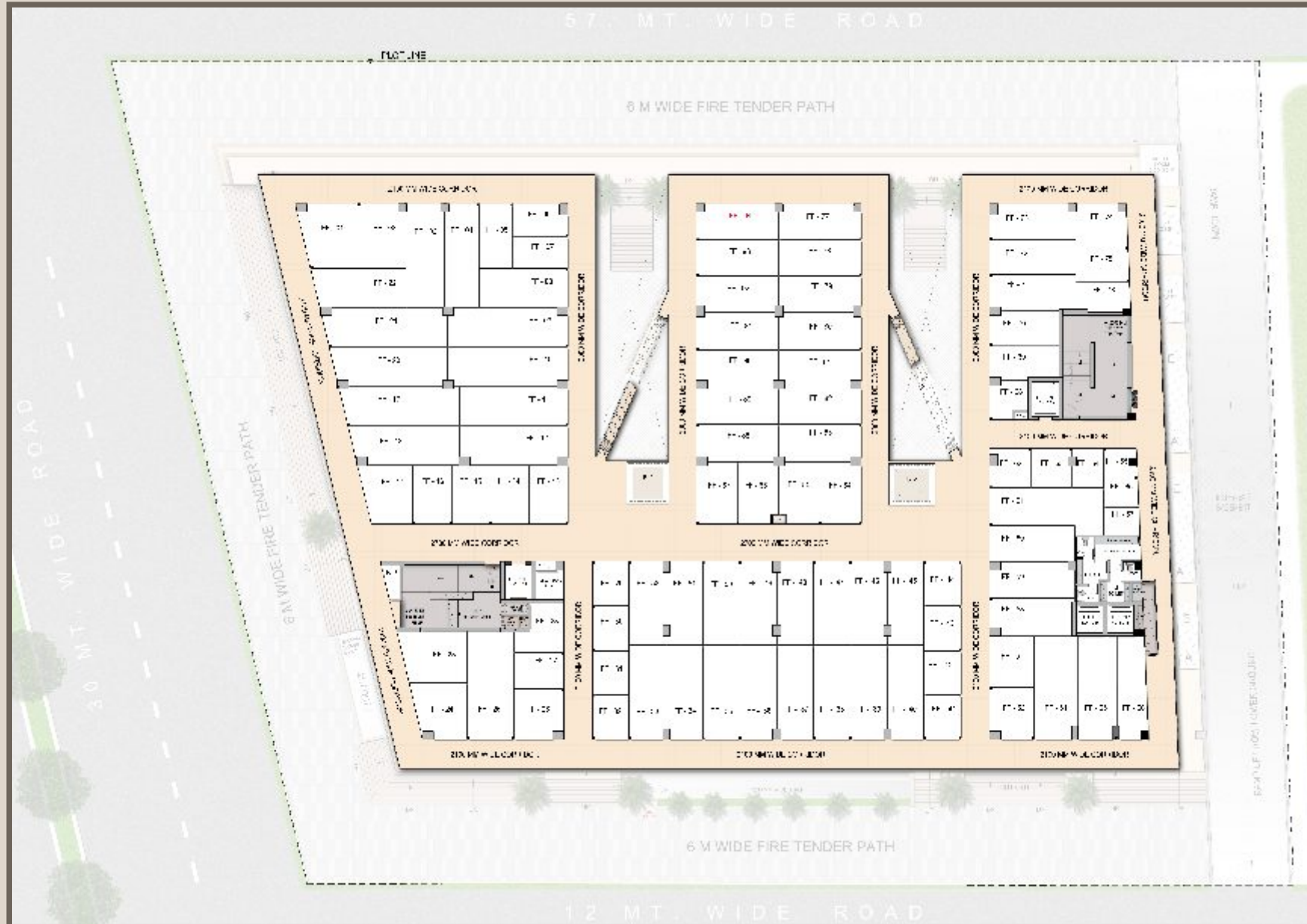




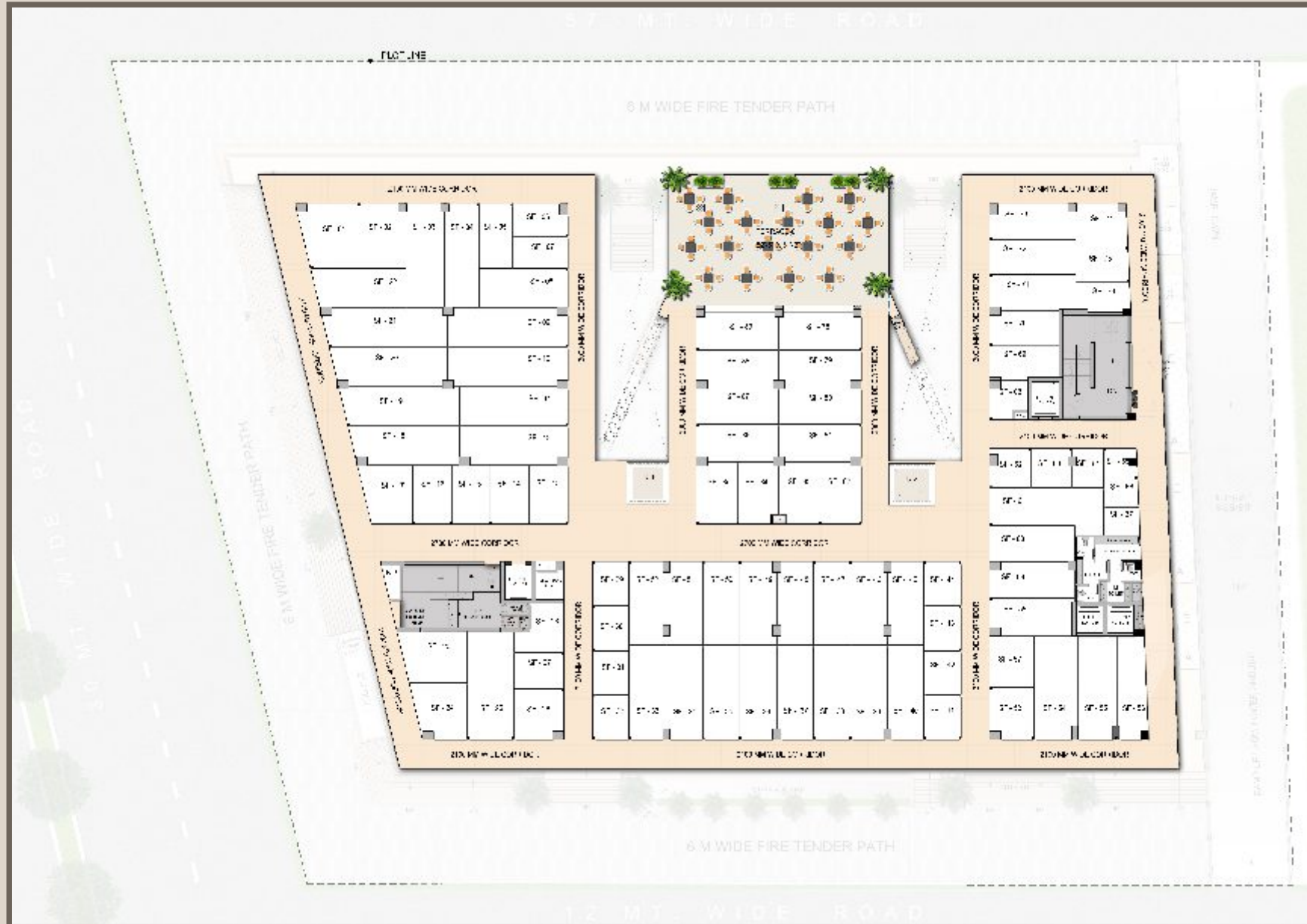
UPPER GROUND FLOOR PLAN



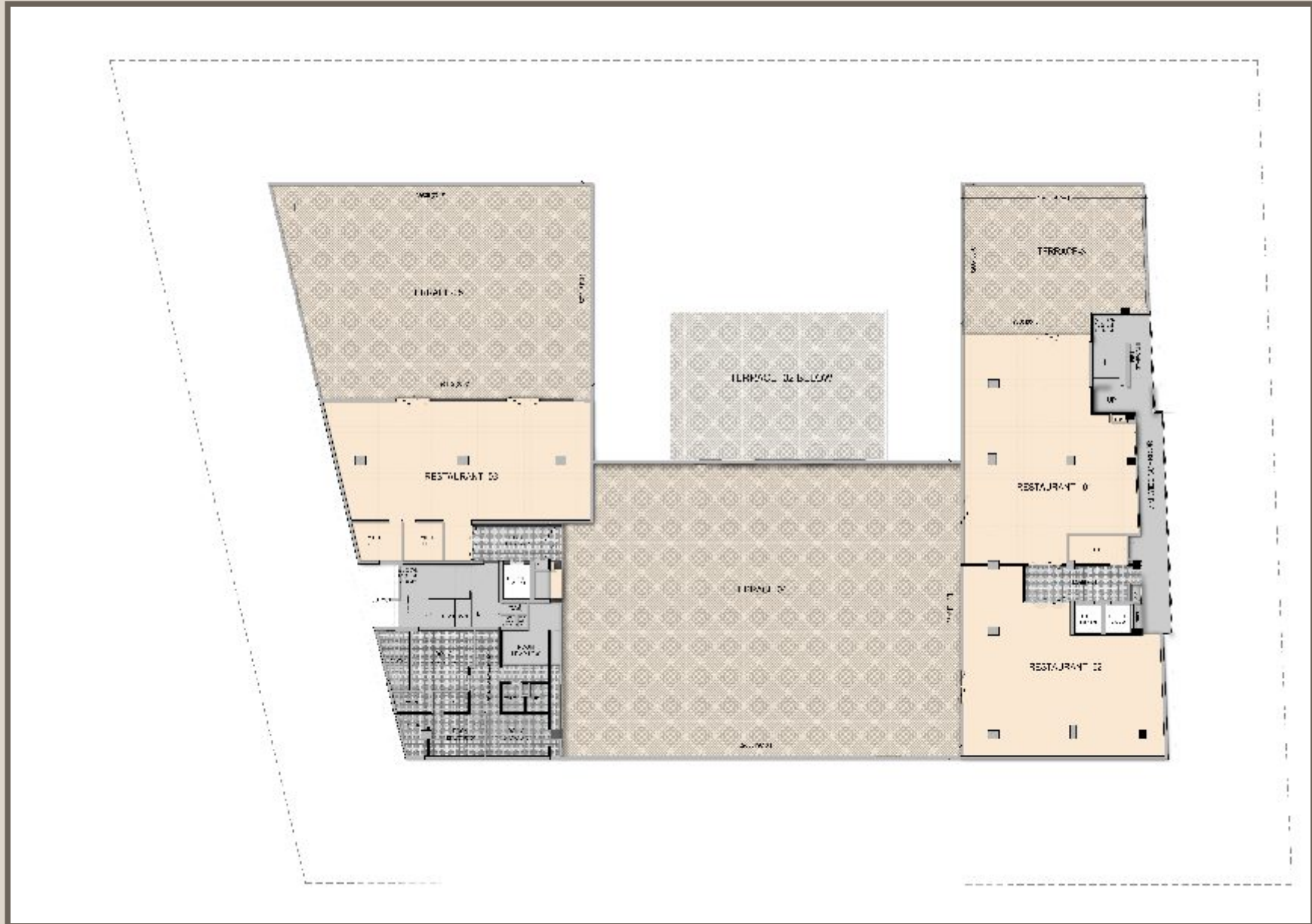
FIRST FLOOR PLAN



SECOND FLOOR PLAN



FOURTH FLOOR PLAN



STRATEGICALLY POSITIONED  
**AT NH 24**  
 PIVOTAL  
**TO WAVE CITY**  
 A 4500 ACRE TOWNSHIP, LARGEST IN NORTH INDIA.



5 min from  
Eastern Peripheral  
Expressway



20 min  
drive from  
Delhi



15 min from  
Ghaziabad  
Railway Station



5 min from  
Manipal Hospital  
(Columbia Asia)



KARYAN

M/s KARYAN INFRA TECH LLP (Promoter of the Project) | RERA Regn. No.: UPRERAPRJ848589 | [www.up-rera.in](http://www.up-rera.in)  
Corp. Office: A-27, Third Floor, Sector-67, Noida, UP-201301. | Site Office: 1A, Sector-02 (Pinewood Enclave) Wave City, NH-24, Ghaziabad  
Contact: +91 7887 85 85 85 | Email: [info@karyaninftratech.com](mailto:info@karyaninftratech.com) | Web: [www.karyaninftratech.com](http://www.karyaninftratech.com)

Disclaimer: Images in the brochure used for artistic impression to give the conceptual sense of possible lifestyle. It can be changed at the discretion of the developer and is not a legal commitment on design or specifications. | 1sq. mtr. = 10.764 sq. ft. and 1 acre = 4047 sq. mtr. (approx.). \* Terms & Conditions apply.