

SIDDHA eden  
*LakeVille*

Experience bliss by the tranquil

LAKE

Embrace the sky from your

SKYWALK



Up above the world so high  
Your life awaits in the sky



**Basketball court and Shooting range on the Rooftop Skywalk**

### **Enjoy life to the core**

Boasting a bouquet of amenities that gift you the life you deserve, the Rooftop Skywalk at Siddha Eden LakeVille elevates your life, and how.

### **Skywalk Features**

Element gardens, Children's play area, Shooting range, Half basketball court, Chess, Lawn, Table tennis, Sit-out spaces, Party lawn, Water-sports area, Jogging track, Observatory deck with telescope, Putting greens, Amphitheatre, Skyplex, Badminton court and more...



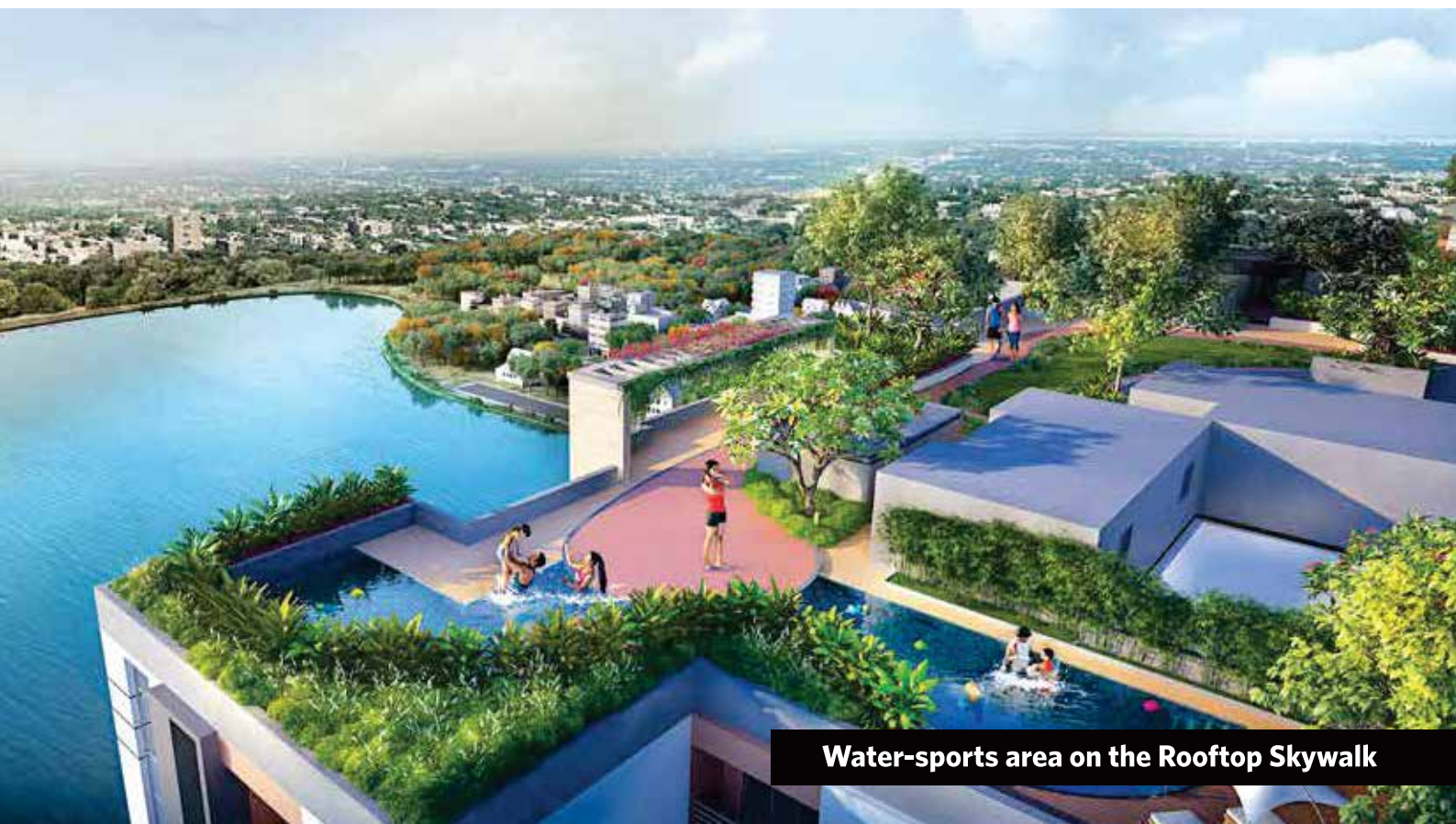
**Children's play area on the Rooftop Skywalk**

### **North Kolkata's Tallest Rooftop Skywalk**

with all modern amenities and facilities, for those who want to live the easy life in a secure gated community.

### **Beautifully landscaped sky garden**

adds a touch of natural serenity. A pristine promenade by the tranquil waters.



**Water-sports area on the Rooftop Skywalk**

# Club on Floors 23 and 24

Come home to a happening club



**Situated on the top two floors,**  
the club gives you a chance to scale the heights of entertainment  
with your family and friends.

**On Floor 24** — Library • Spa • Swimming pool with deck  
Yoga room • Gymnasium • Washroom

**On Floor 23** — Hobby room • Multi-purpose hall • Miniplex • Table tennis room  
Games room • Admin room • Coffee shop with pantry • Toddlers' room  
Crèche • Squash court • Washroom

**On the Ground Floor** — Swimming pool with deck • Party hall with washroom



**Swimming pool on Floor 24**



**Coffee shop on Floor 23**



**Multi-purpose hall on Floor 23**



**Games room on Floor 23**



**Gymnasium on Floor 24**

# The address of happiness

## The rooms of smiles

### **SPECIFICATIONS**

#### *Structure*

Earthquake-resistant RCC-framed structure with monolithic concreting

#### *Internal Walls*

RCC/ACC wall overlaid with white cement putty

#### *Doors*

Doors with tough timber frames and solid-core flush shutters

#### *Windows*

Aluminium frames with fully glazed shutters and quality fittings

#### *Flooring*

Vitrified-tile flooring in all bedrooms, living/dining rooms

#### *Kitchen*

**Floor** Ceramic tiles | **Countertops** Granite with steel sink  
**Dados** Ceramic tiles up to a height of 2 feet from the countertop

#### *Toilet*

**Floor** Anti-skid ceramic tiles  
**Dados** Ceramic tiles up to 7 feet/up to soffit of lintel level

#### *Sanitaryware*

Chromium-plated fittings, white high-quality porcelain fixtures

#### *Electricals*

Superior-quality concealed copper wiring with the latest modular switches

#### *Telephone Wiring*

Central distribution console networked with all apartments

#### *Exterior*

Weatherproof exterior texture finish

#### *Lift Facia*

Combination of granite and laminate above wooden panel

#### *Interior*

**Internal walls** Smooth, impervious plaster of paris or wall putty  
**Common area** Obd/plastic emulsion paints over putty

*\*Fittings as per actual materials used. Accessories shown are for illustration purpose only.*



**Living room**



**Pollution-free life overlooking 18 acre lake**



**Master bedroom**

# SERENITY

will be your neighbour

# HAPPY

will be your middle name



Jogging track

**A charming lakeside** just for you. Take a breath of fresh air in the mornings on the jogging track. Visit the play area in the afternoon with your little one. The 18-acre Bonhooghly lake makes life bright and sunny at Siddha Eden LakeVille. The lake is being beautified by Siddha Group and Eden Realty.







**Beautified lakeside view**



**Children's play area**



**Seating zone**

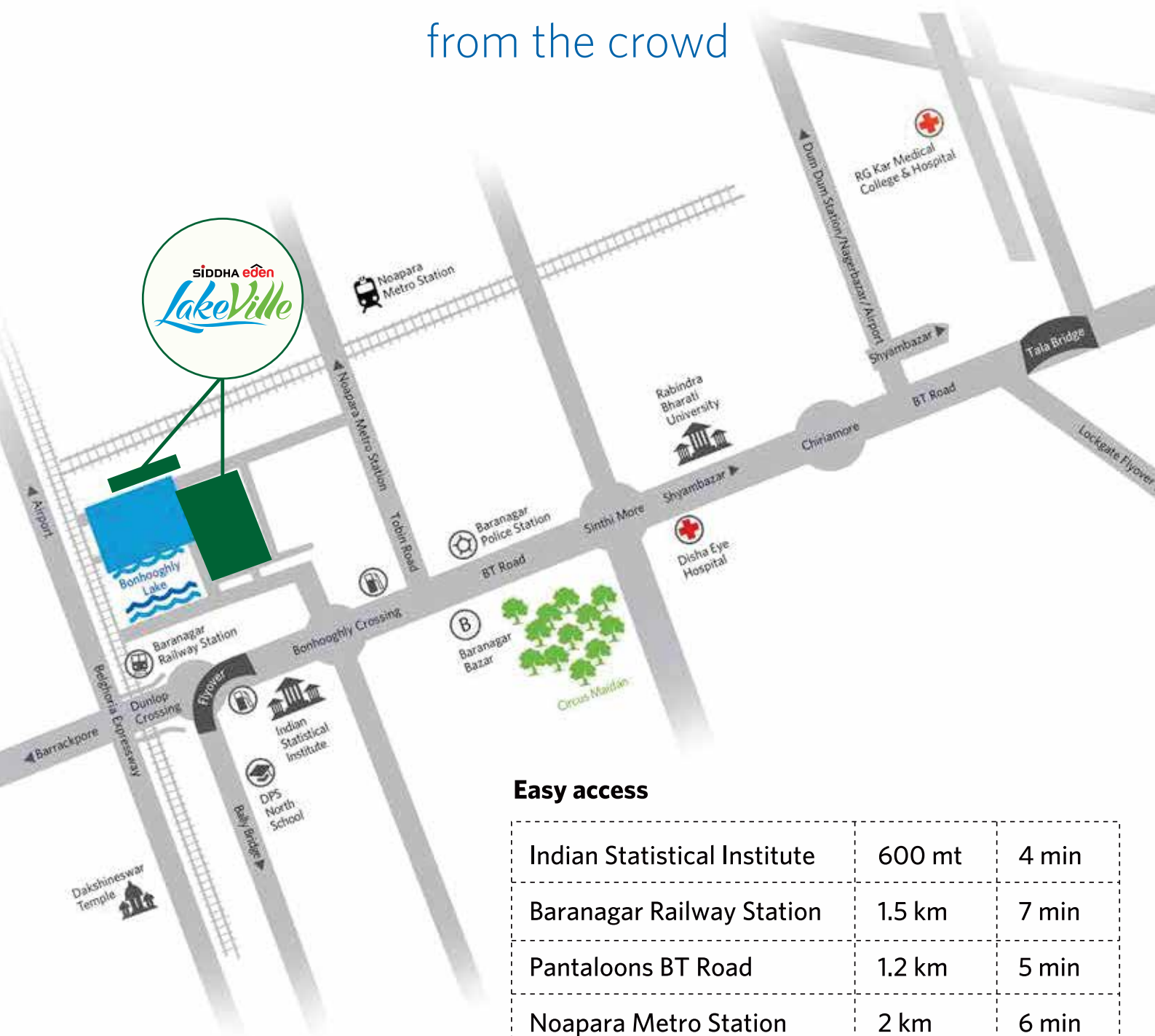
# Facilities & Conveniences



Visitors' car parking area  
Intercom network  
Rainwater harvesting system  
Water-treatment plant  
Firefighting system  
Sewage treatment plant  
Solar lighting in certain areas  
Power backup for common areas  
24/7 water supply  
Elevators  
Facility management system  
Security with 24/7 surveillance  
CCTV  
Terrace garden  
Residents' cycle stand  
Guest house  
Pet-friendly zone  
Sidewalk, pergola, seating zone  
Ramp for people with special needs in suitable areas  
and more...

CLOSER  
to schools, offices, malls

FAR  
from the crowd



**Easy access**

Indian Statistical Institute	600 mt	4 min
Baranagar Railway Station	1.5 km	7 min
Pantaloons BT Road	1.2 km	5 min
Noapara Metro Station	2 km	6 min
DPS North School	2.3 km	8 min
Shyambazar 5 Point	5 km	16 min
Airport	7.2 km	18 min



Map not to scale

Estimated distance and time

# SIDDHA

Home is where you discover the real you. Siddha's aim is to develop high quality homes within your budget and add to your pleasant discoveries. Since its inception in 1986, Siddha has been crafting residential and commercial spaces with a difference, to make good living affordable in Kolkata, Jaipur, Mumbai and Bengaluru.

Siddha's perseverance and passion for quality homes drive it forward with every new project. Led by Group Chairman Chandra Prakash Jain and Group Managing Director Sanjay Jain, Siddha creates and sells high-quality housing in India.

Siddha believes that the magic of craftsmanship lies beyond the reality of construction. It is the ability to sculpt better lives by designing and crafting living spaces that sets Siddha apart.



Established in Kolkata in February 2003, the Eden Realty Group aims to develop quality infrastructure and real estate projects. The Group constantly innovates for quality and design excellence and works towards making living spaces affordable and delivering true value for money and solutions for every strata of the society.

Eden Realty has the distinction of having delivered Kolkata's first real estate FDI project: Eden City Maheshtala Phase I, comprising 27 towers. Bonorini - the first-of-its-kind refugee rehabilitation project benefitting 800 refugee families has also been delivered in PPP mode with Siddha Group and the Government of West Bengal.

Under efficient leadership of Shri Sachchidanand Rai - Chairman, Eden Realty Group brings innovation, efficiency and professionalism to its team.

## Green homes for you and the environment

Silver rated certified project under IGBC's 'Green Homes' norms.

Siddha Eden LakeVille is registered as a 'Green Homes' project by the Indian Green Building Council (IGBC). 'Green Homes' is the first rating programme developed in India, exclusively for the residential sector.



## Architect



Agrawal & Agrawal, led by Jay Prakash Agrawal, the renowned architect, ranks amongst Eastern India's leading architectural practitioners. It is known for its residential apartments, commercial complexes, townships, IT infrastructure, complexes, malls, hotels, institutional and leisure projects.

## Legal Adviser



Saha & Ray, Advocates, Kolkata, is a premier law firm specialising in real estate and property laws. Armed with international affiliations and global terms of reference, the firm is headed by Avik Saha and Jayati Ray.

# MASTER SITE PLAN

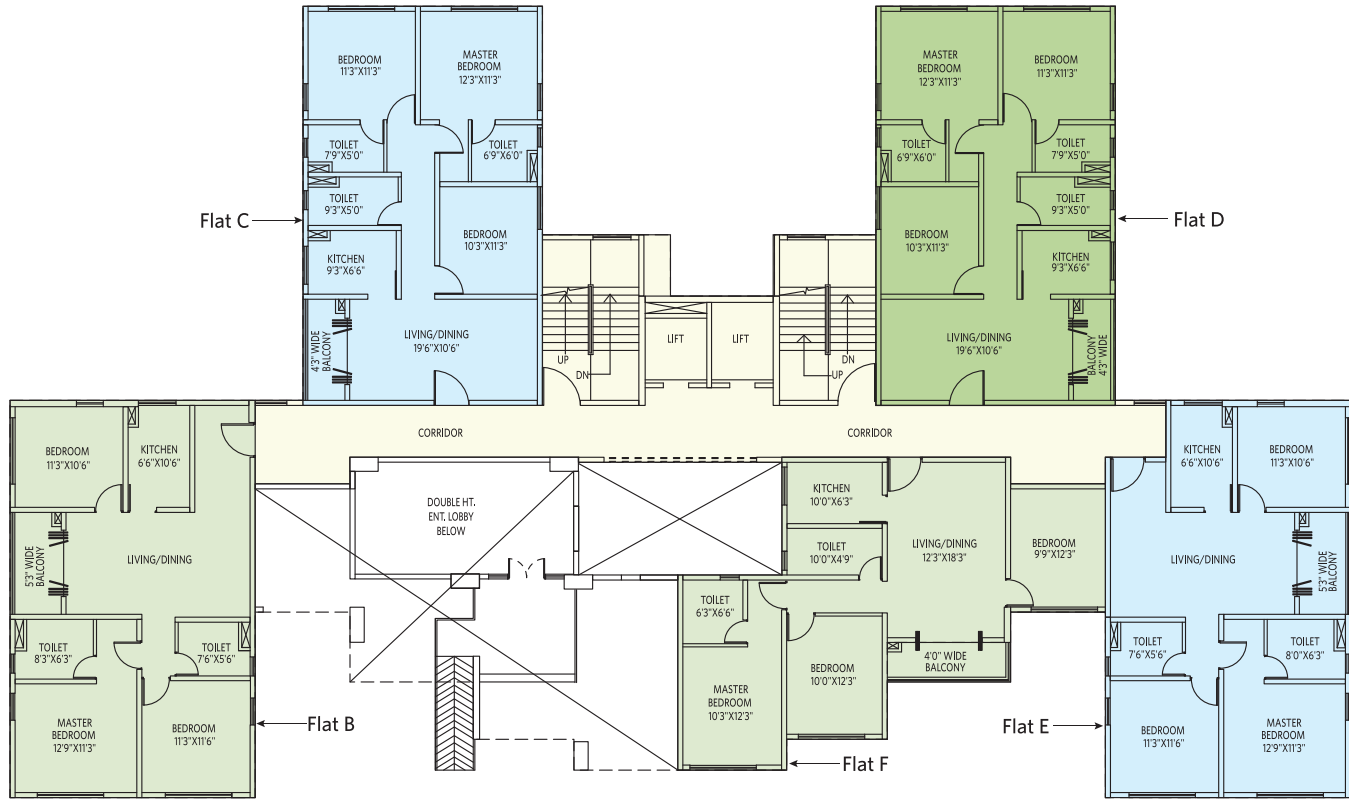


Phase I - HIRA/P/NOR/2018/000183  
Phase II - HIRA/P/NOR/2019/000385



# Ripple (Block-1Q)

## First Floor Plan



Flat	Type	CA	BA	BUA
A	NA	NA	NA	NA
B	3BHK + 2T	911	50	1049
C	3BHK + 3T	906	39	1030
D	3BHK + 3T	906	39	1030
E	3BHK + 2T	875	50	1008
F	3BHK + 2T	845	44	977

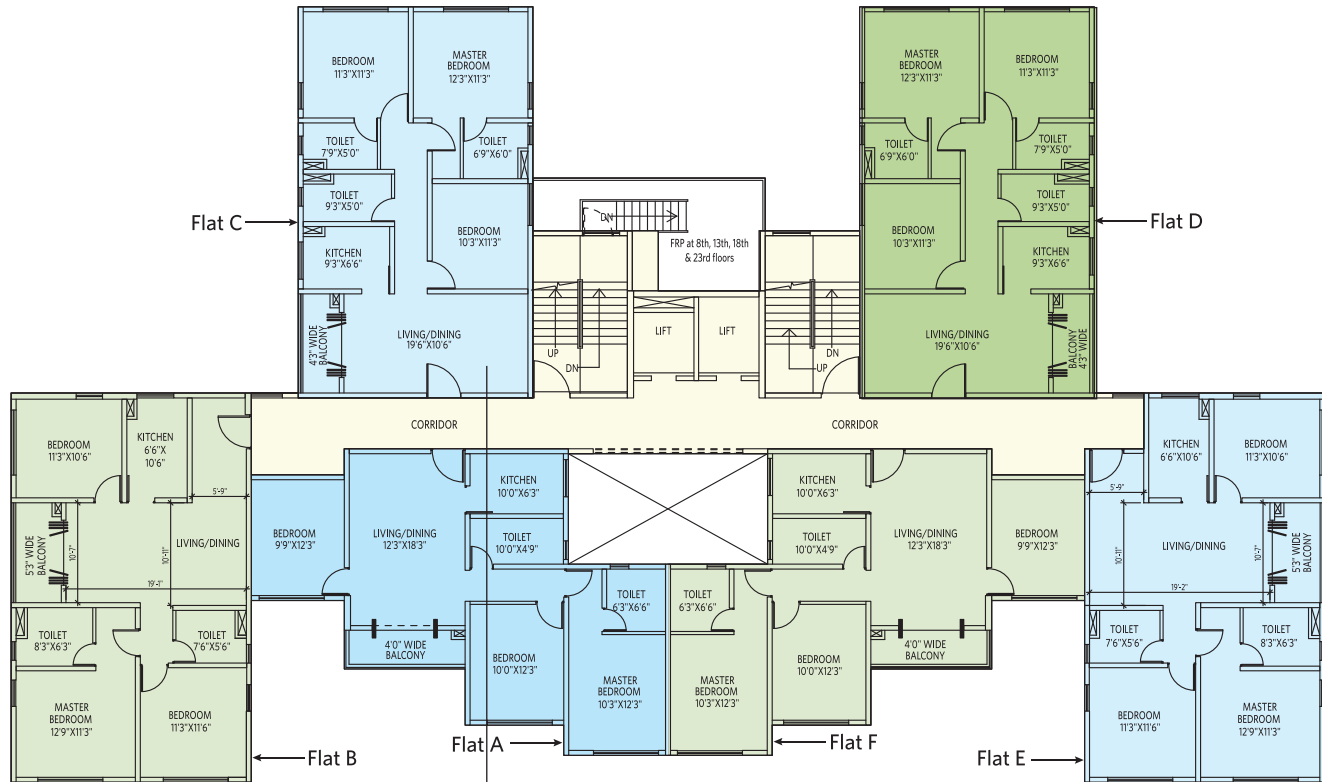
Unit in sq ft

BHK = Bedroom/Hall/Kitchen, T = Toilet, CA = Carpet Area, BA = Balcony Area, BUA= Built Up Area



# Ripple (Block-1Q)

## Typical Floor Plan (2nd-25th)



**Flat C- 3BHK + 3T**



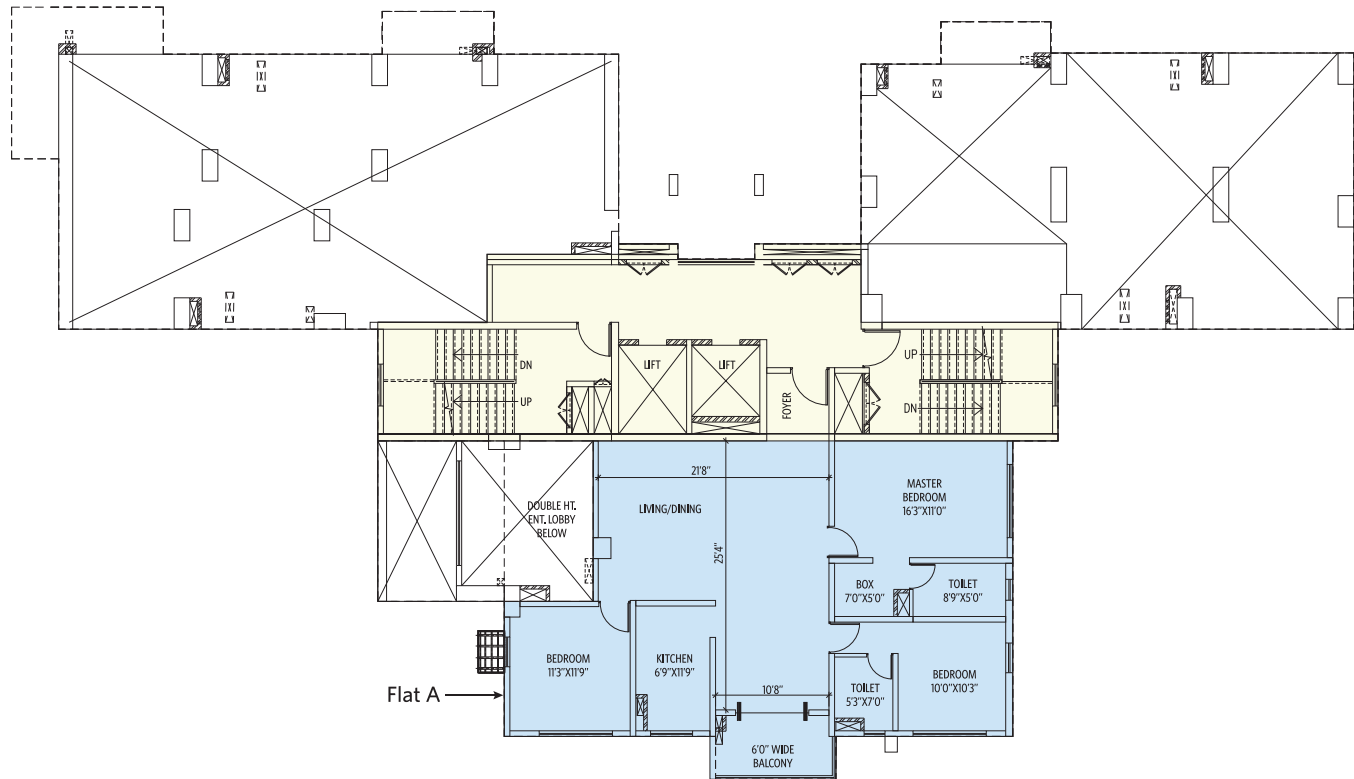
Flat	Type	CA	BA	BUA
A	3BHK + 2T	845	44	969
B	3BHK + 2T	911	50	1046
C	3BHK + 3T	906	39	1030
D	3BHK + 3T	906	39	1030
E	3BHK + 2T	875	50	1008
F	3BHK + 2T	845	44	969

Unit in sq ft

BHK = Bedroom/Hall/Kitchen, T = Toilet, FRP= Fire Refuge Platform, CA = Carpet Area, BA = Balcony Area, BUA= Built Up Area

# Stream (Block-1R)

## First Floor Plan



Flat	Type	CA	BA	BUA
A	3BHK + 2T	1148	58	1321
B	NA	NA	NA	NA
C	NA	NA	NA	NA

Unit in sq ft

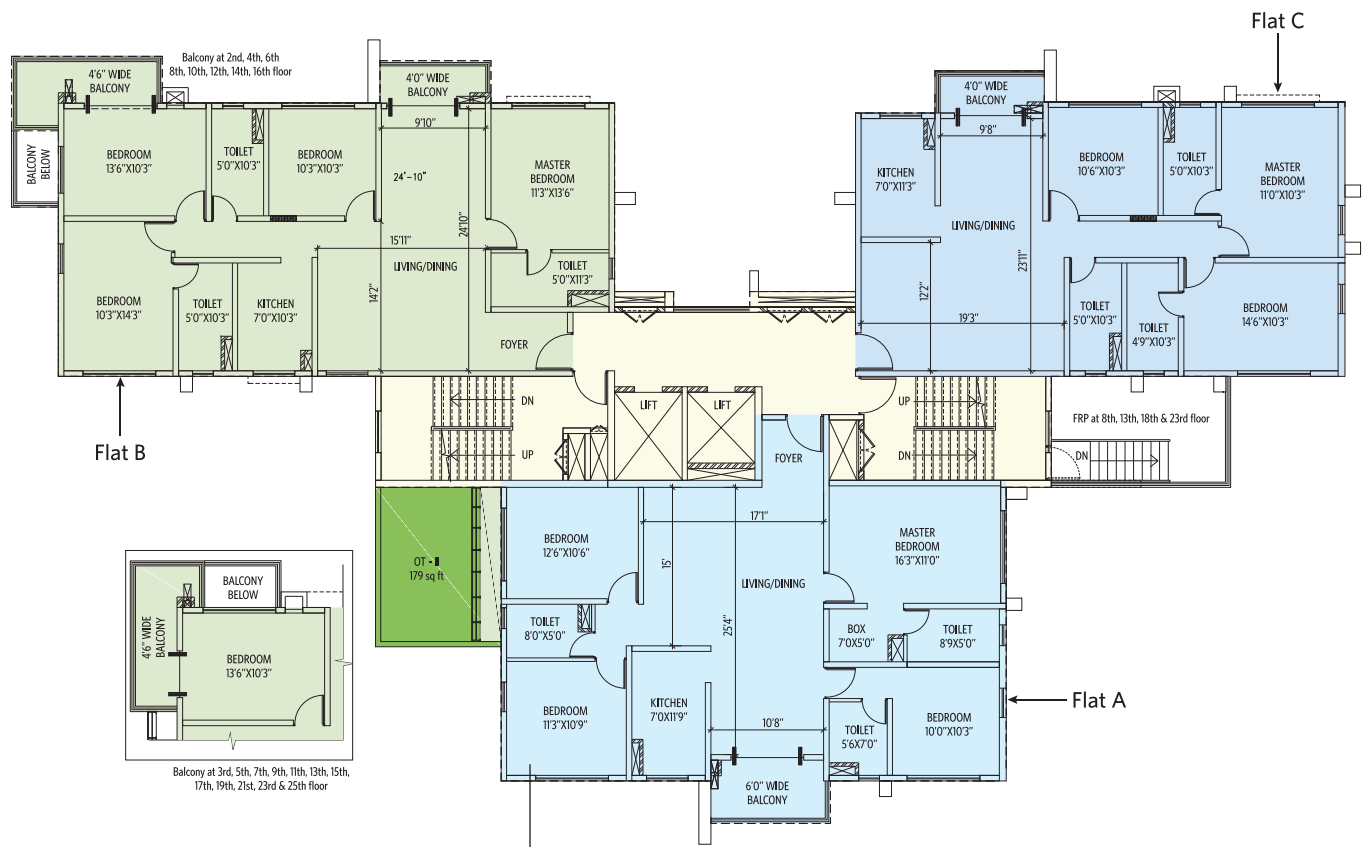
BHK = Bedroom/Hall/Kitchen, T = Toilet, CA = Carpet Area, BA = Balcony Area, BUA= Built up Area





# Stream (Block-1R)

## Typical Floor Plan (2nd-25th)



**Flat A- 4BHK + 3T**



Flat	Type	CA	BA	OT	BUA
A	4BHK + 3T	1281	58	179	1450
B	4BHK + 3T	1246	60	NA	1455
C	3BHK + 3T	1100	33	NA	1226

Unit in sq ft

BHK = Bedroom/Hall/Kitchen, T = Toilet, FRP= Fire Refuge Platform, CA = Carpet Area, BA = Balcony Area, OT= Open Terrace, BUA= Built Up Area



# Promenade (Block-1N)

## First Floor Plan



Flat	Type	CA	BA	OT	BUA
D	2BHK + 2T	518	17	61	611
E	3BHK + 2T	754	30	256	862
F	3BHK + 2T	754	30	NA	865

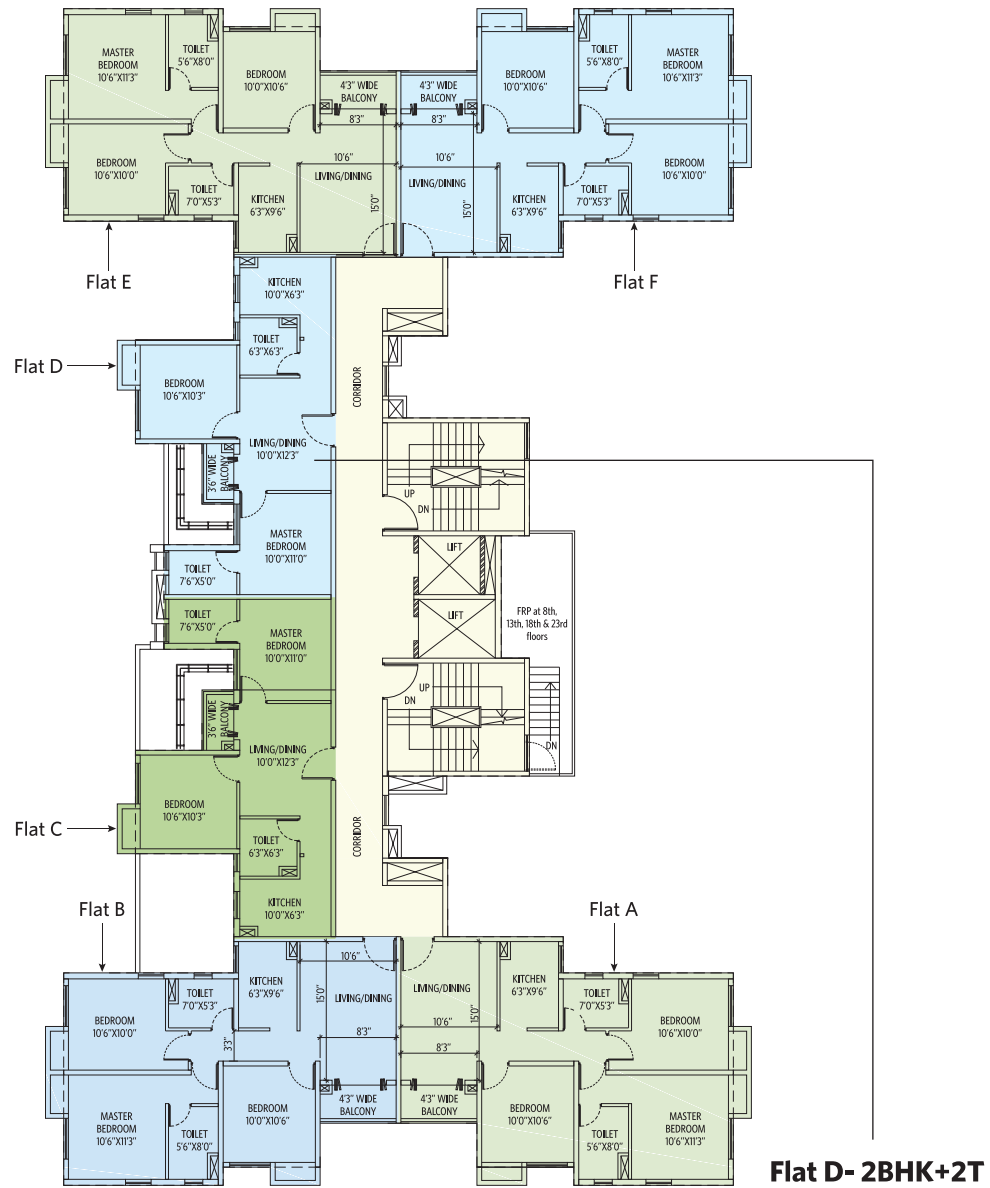
Unit in sq ft

BHK = Bedroom/Hall/Kitchen, T = Toilet, CA = Carpet Area, BA = Balcony Area, OT= Open Terrace, BUA= Built Up Area



# Promenade (Block-1N)

## Typical Floor Plan (2nd-25th)



Flat D- 2BHK+2T

Flat	Type	CA	BA	BUA
A	3BHK + 2T	754	30	865
B	3BHK + 2T	754	30	862
C	2BHK + 2T	518	17	611
D	2BHK + 2T	518	17	611
E	3BHK + 2T	754	30	862
F	3BHK + 2T	754	30	865

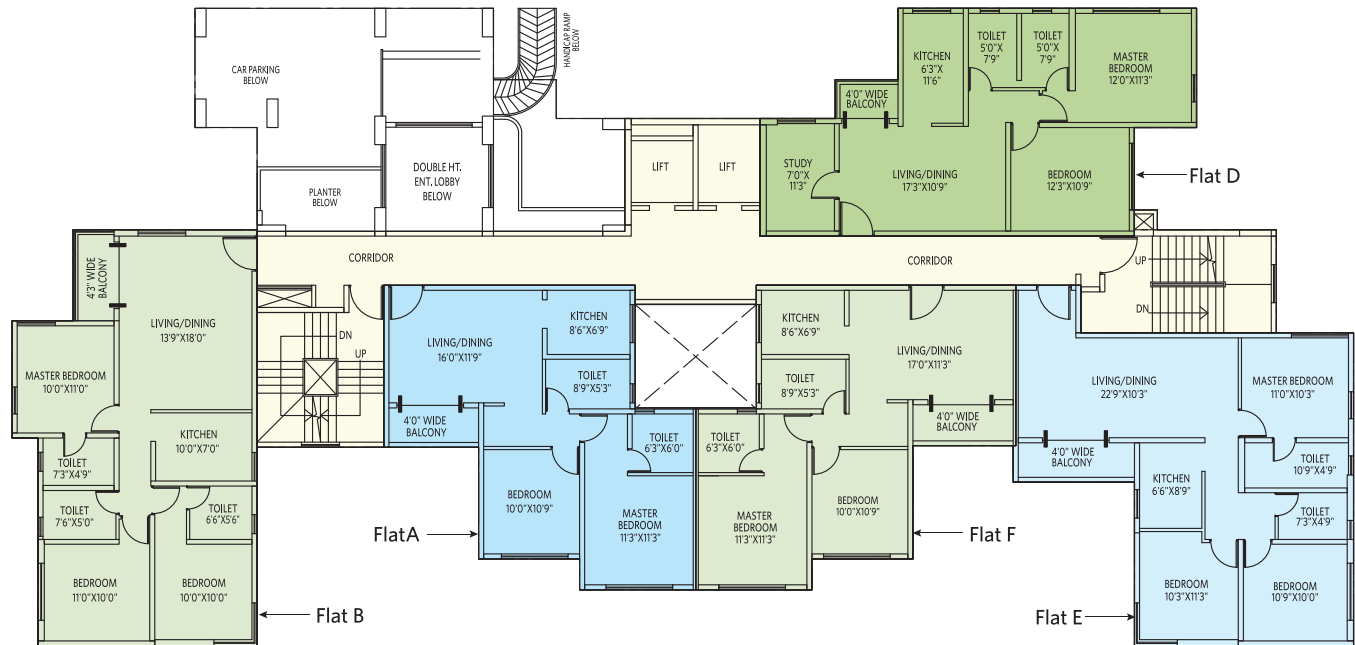
Unit in sq ft

BHK = Bedroom/Hall/Kitchen, T = Toilet, FRP= Fire Refuge Platform, CA = Carpet Area, BA = Balcony Area, BUA= Built Up Area



# Oceania (Block-1M)

## First Floor Plan



Flat	Type	CA	BA	BUA
A	2BHK + 2T	658	32	760
B	3BHK + 3T	856	33	975
C	NA	NA	NA	NA
D	2BHK + 2T + ST	751	20	856
E	3BHK + 2T	833	42	959
F	2BHK + 2T	667	38	772

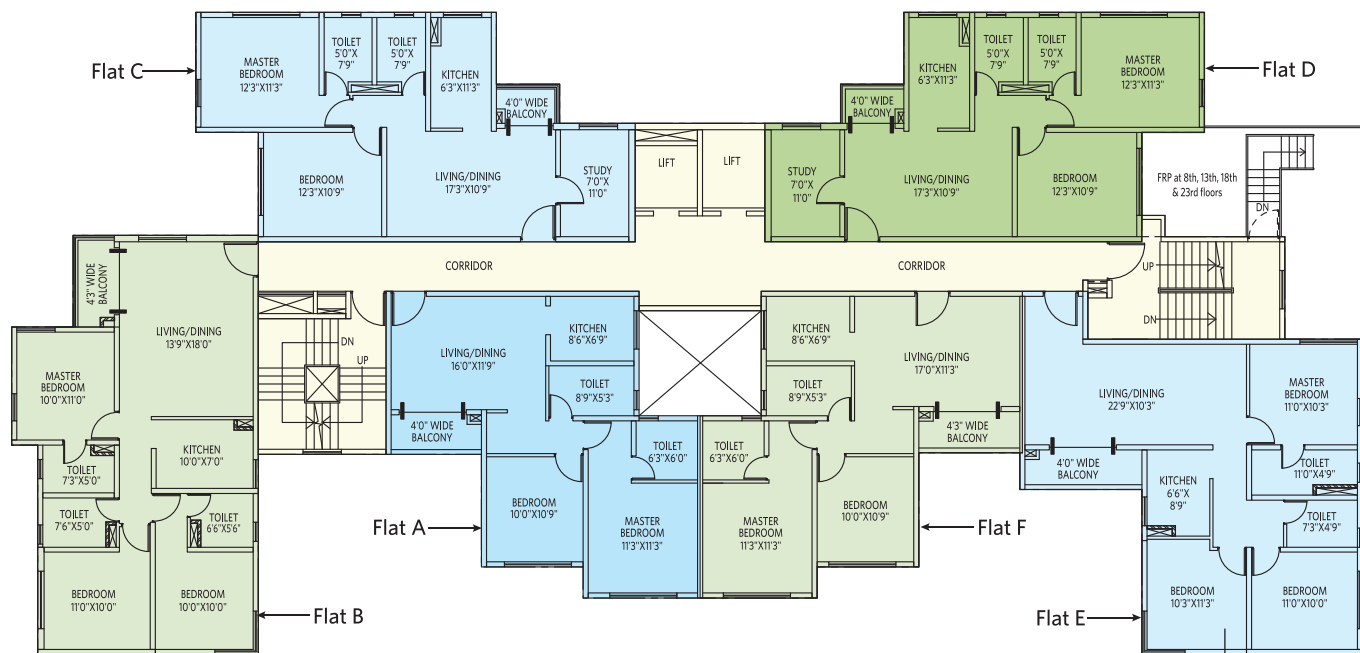
Unit in sq ft

BHK = Bedroom/Hall/Kitchen, T = Toilet, ST = Study, CA = Carpet Area, BA = Balcony Area, BUA = Built Up Area



# Oceania (Block-1M)

## Typical Floor Plan (2nd-25th)



**Flat E- 3BHK+2T**



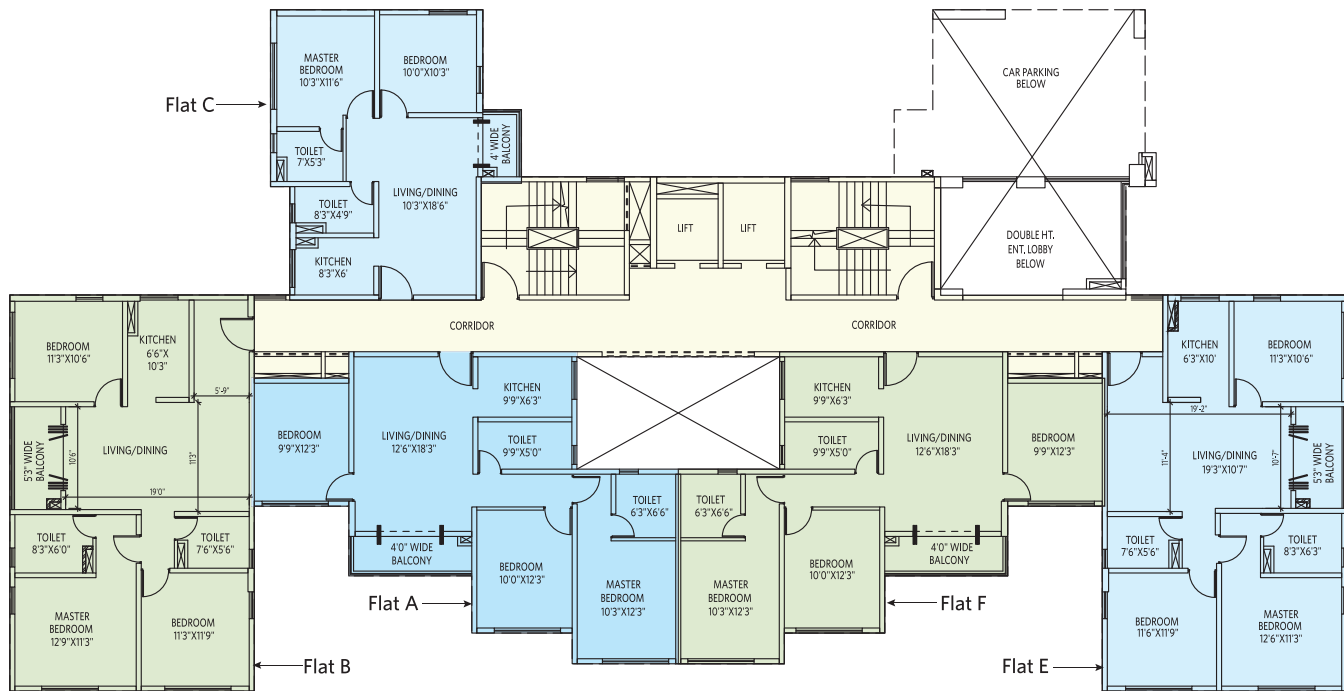
Flat	Type	CA	BA	BUA
A	2BHK + 2T	658	32	760
B	3BHK + 3T	856	33	975
C	2BHK + 2T + ST	750	20	855
D	2BHK + 2T + ST	751	20	856
E	3BHK + 2T	833	42	959
F	2BHK + 2T	667	38	772

Unit in sq ft

BHK = Bedroom/Hall/Kitchen, T = Toilet, ST = Study, FRP= Fire Refuge Platform, CA = Carpet Area, BA = Balcony Area, BUA= Built Up Area

# Marina (Block-1L)

## First Floor Plan



Flat	Type	CA	BA	BUA
A	3BHK + 2T	845	44	969
B	3BHK + 2T	910	50	1046
C	2BHK + 2T	578	22	672
D	NA	NA	NA	NA
E	3BHK + 2T	873	50	1009
F	3BHK + 2T	845	44	969

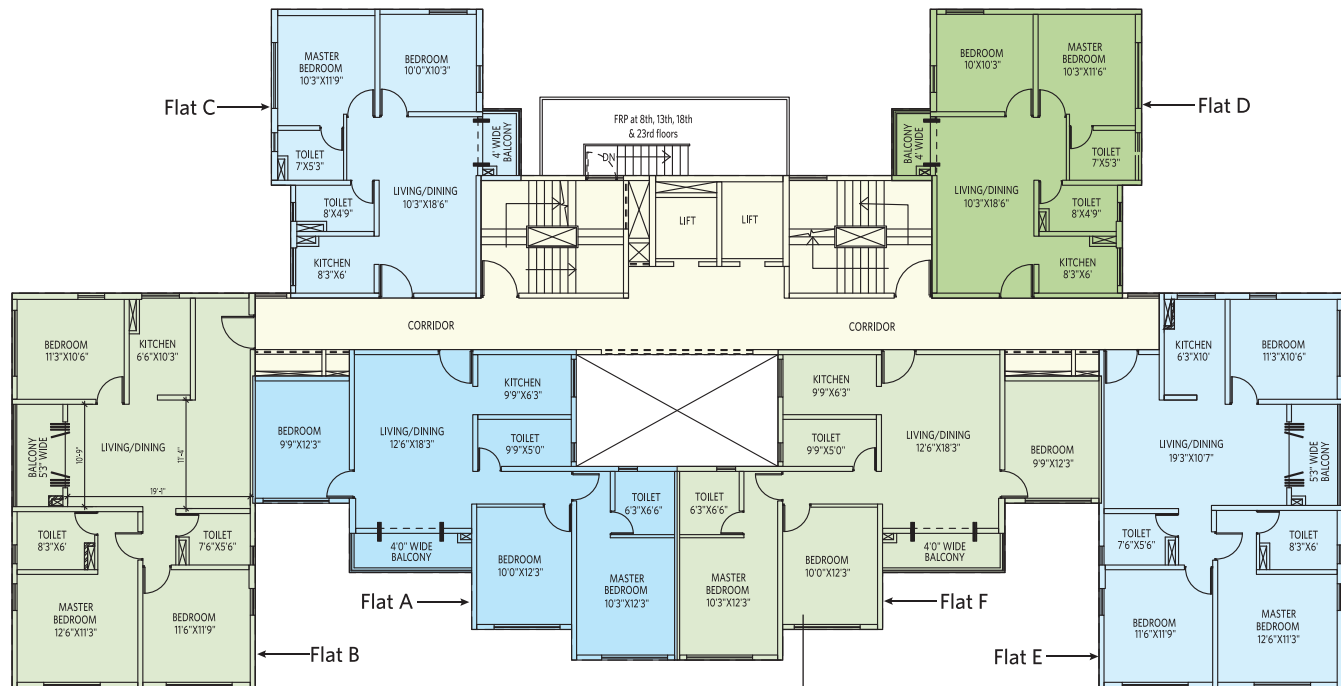
Unit in sq ft

BHK = Bedroom/Hall/Kitchen, T = Toilet, CA = Carpet Area, BA = Balcony Area, BUA= Built Up Area



# Marina (Block-1L)

## Typical Floor Plan (2nd-25th)



**Flat F- 3BHK+2T**



Flat	Type	CA	BA	BUA
A	3BHK + 2T	845	44	969
B	3BHK + 2T	910	50	1046
C	2BHK + 2T	578	22	672
D	2BHK + 2T	581	22	672
E	3BHK + 2T	873	50	1009
F	3BHK + 2T	845	44	969

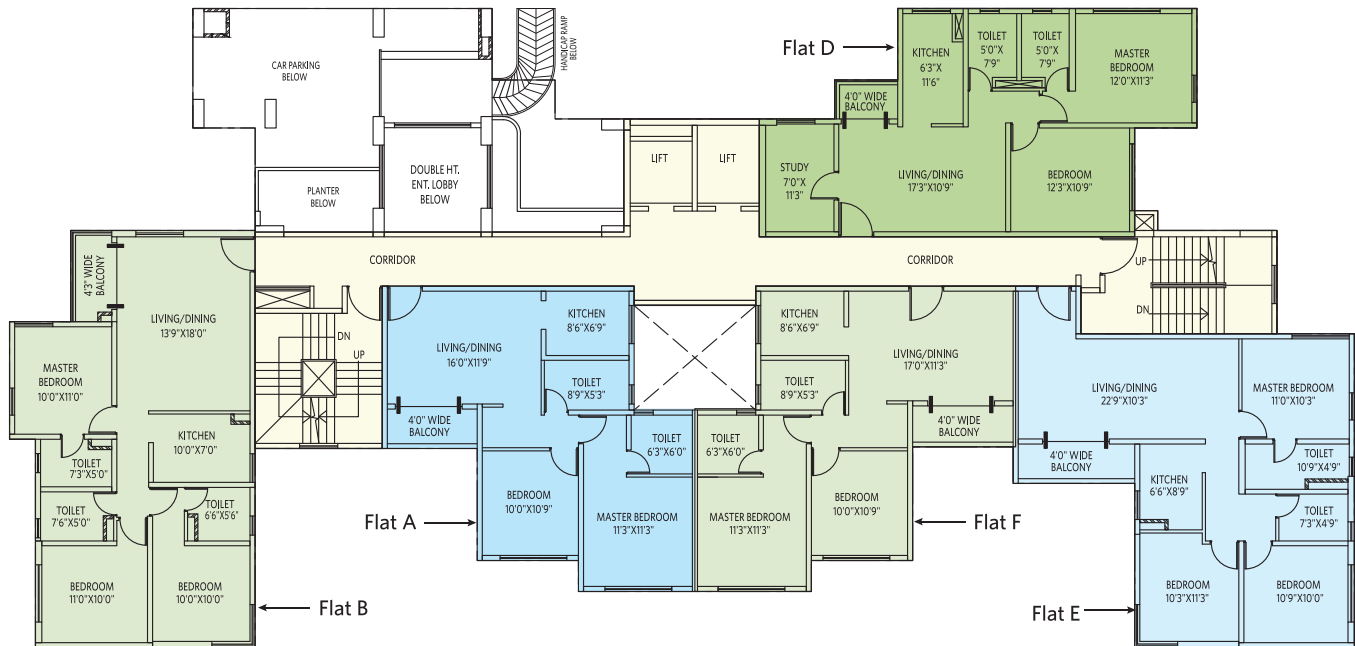
Unit in sq ft

BHK = Bedroom/Hall/Kitchen, T = Toilet, FRP= Fire Refuge Platform, CA = Carpet Area, BA = Balcony Area, BUA= Built Up Area



# Lagoon (Block-1K)

## First Floor Plan



Flat	Type	CA	BA	BUA
A	2BHK + 2T	658	32	760
B	3BHK + 3T	856	32	975
C	NA	NA	NA	NA
D	2BHK + 2T + ST	751	20	856
E	3BHK + 2T	832	42	959
F	2BHK + 2T	667	38	772

Unit in sq ft

BHK = Bedroom/Hall/Kitchen, T = Toilet, ST = Study, CA = Carpet Area, BA = Balcony Area, BUA = Built Up Area





# Lagoon (Block-1K)

## Typical Floor Plan (2nd-25th)



**Flat D- 2BHK + 2T + ST**

Flat	Type	CA	BA	BUA
A	2BHK + 2T	658	32	760
B	3BHK + 3T	856	32	975
C	2BHK + 2T + ST	750	20	855
D	2BHK + 2T + ST	751	20	856
E	3BHK + 2T	832	42	959
F	2BHK + 2T	667	38	772

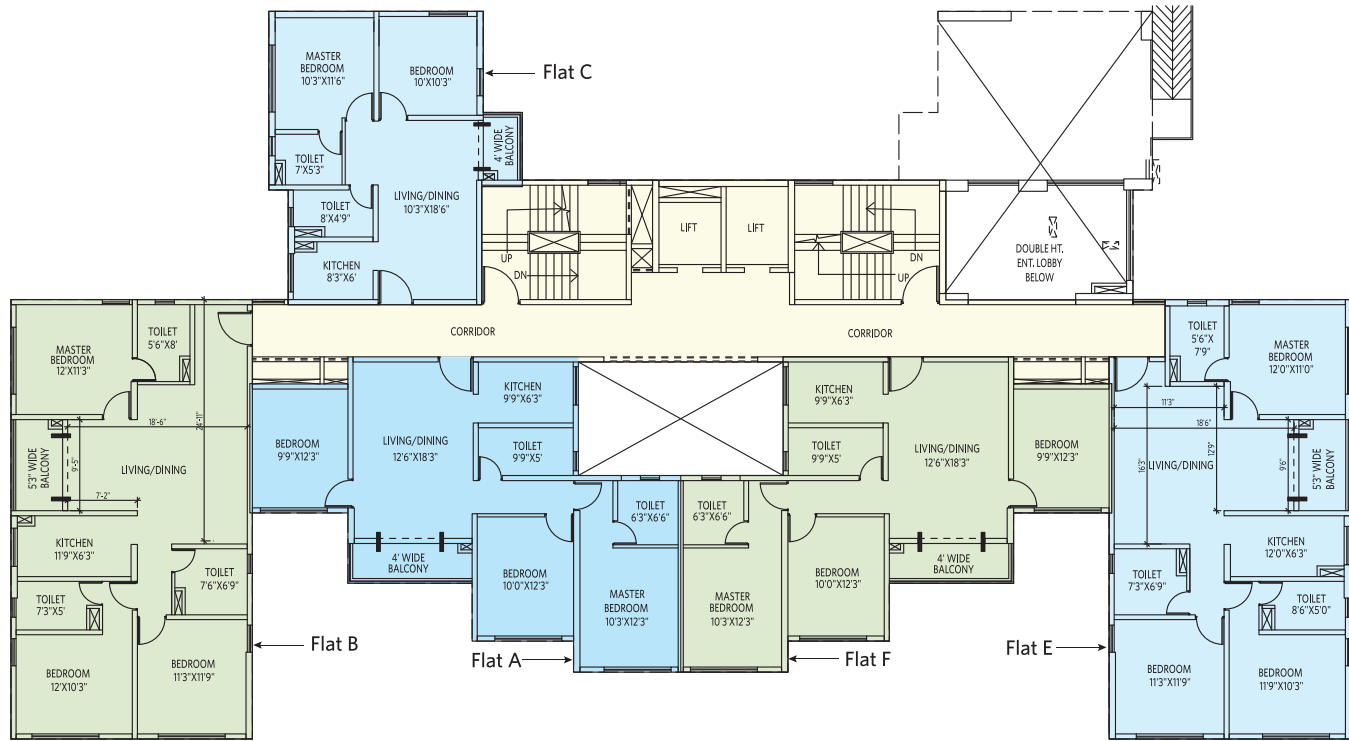
Unit in sq ft



BHK = Bedroom/Hall/Kitchen, T = Toilet, ST = Study, FRP= Fire Refuge Platform, CA = Carpet Area, BA = Balcony Area, BUA= Built Up Area

# Islet (Block-1J)

## First Floor Plan



Flat	Type	CA	BA	BUA
A	3BHK + 2T	844	44	968
B	3BHK + 3T	989	44	1122
C	2BHK + 2T	578	22	672
D	NA	NA	NA	NA
E	3BHK + 3T	954	44	1088
F	3BHK + 2T	844	44	968

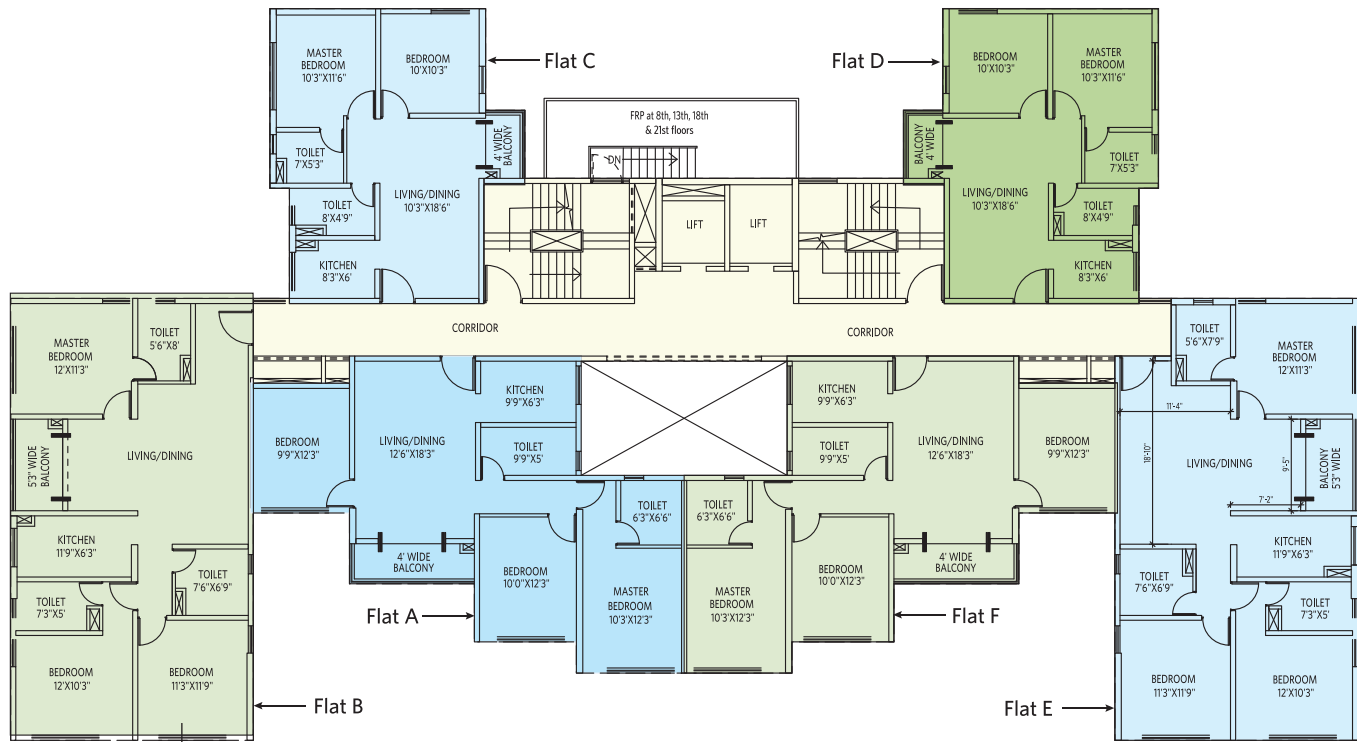
Unit in sq ft

BHK = Bedroom/Hall/Kitchen, T = Toilet, CA = Carpet Area, BA = Balcony Area, BUA= Built Up Area



# Islet (Block-1J)

## Typical Floor Plan (2nd-22nd)



**Flat B- 3BHK+3T**



Flat	Type	CA	BA	BUA
A	3BHK + 2T	844	44	968
B	3BHK + 3T	989	44	1122
C	2BHK + 2T	578	22	672
D	2BHK + 2T	581	22	672
E	3BHK + 3T	954	44	1088
F	3BHK + 2T	844	44	968

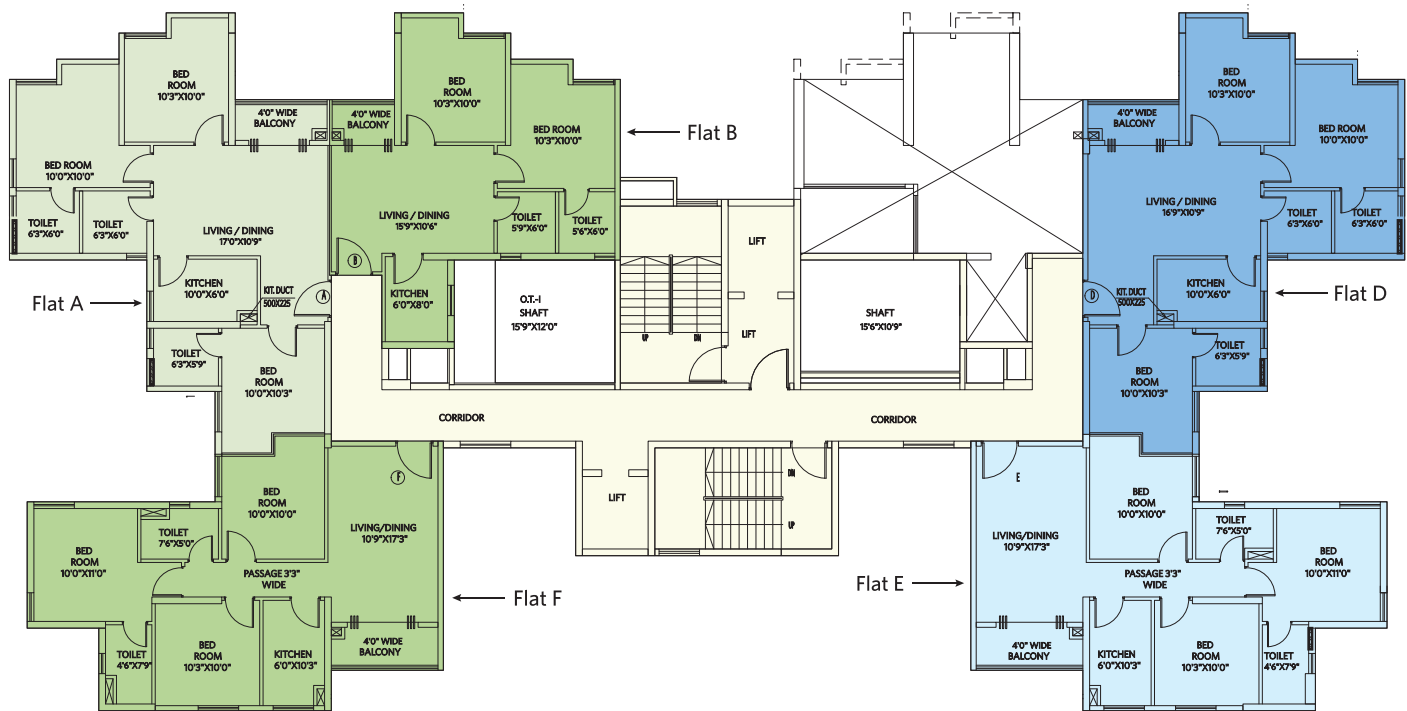
Unit in sq ft

BHK = Bedroom/Hall/Kitchen, T = Toilet, FRP= Fire Refuge Platform, CA = Carpet Area, BA = Balcony Area, BUA= Built Up Area

# Harbour (Block-1H)

## First Floor Plan

Proposed Future Block



Flat	Type	CA	BA	BUA
A	3BHK + 3T	781	30	894
B	2BHK + 2T	544	20	630
C	NA	NA	NA	NA
D	3BHK + 3T	779	30	897
E	3BHK + 2T	731	38	853
F	3BHK + 2T	730	38	853

Unit in sq ft

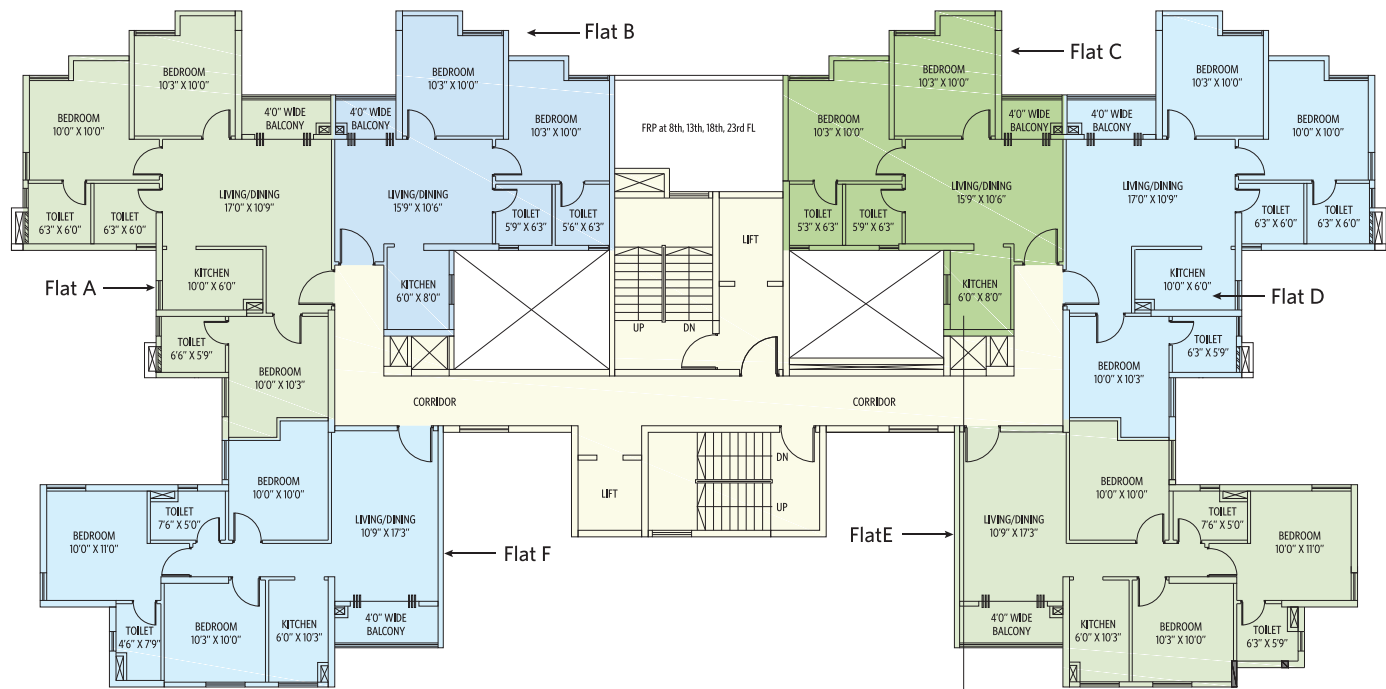
BHK = Bedroom/Hall/Kitchen, T = Toilet, CA = Carpet Area, BA = Balcony Area, BUA= Built Up Area



# Harbour (Block-1H)

## Typical Floor Plan (21st-25th)

Proposed Future Block



**Flat C- 2BHK+2T**



Flat	Type	CA	BA	BUA
A	3BHK + 3T	781	30	894
B	2BHK + 2T	544	20	630
C	2BHK + 2T	543	20	630
D	3BHK + 3T	781	30	894
E	3BHK + 2T	731	38	853
F	3BHK + 2T	730	38	853

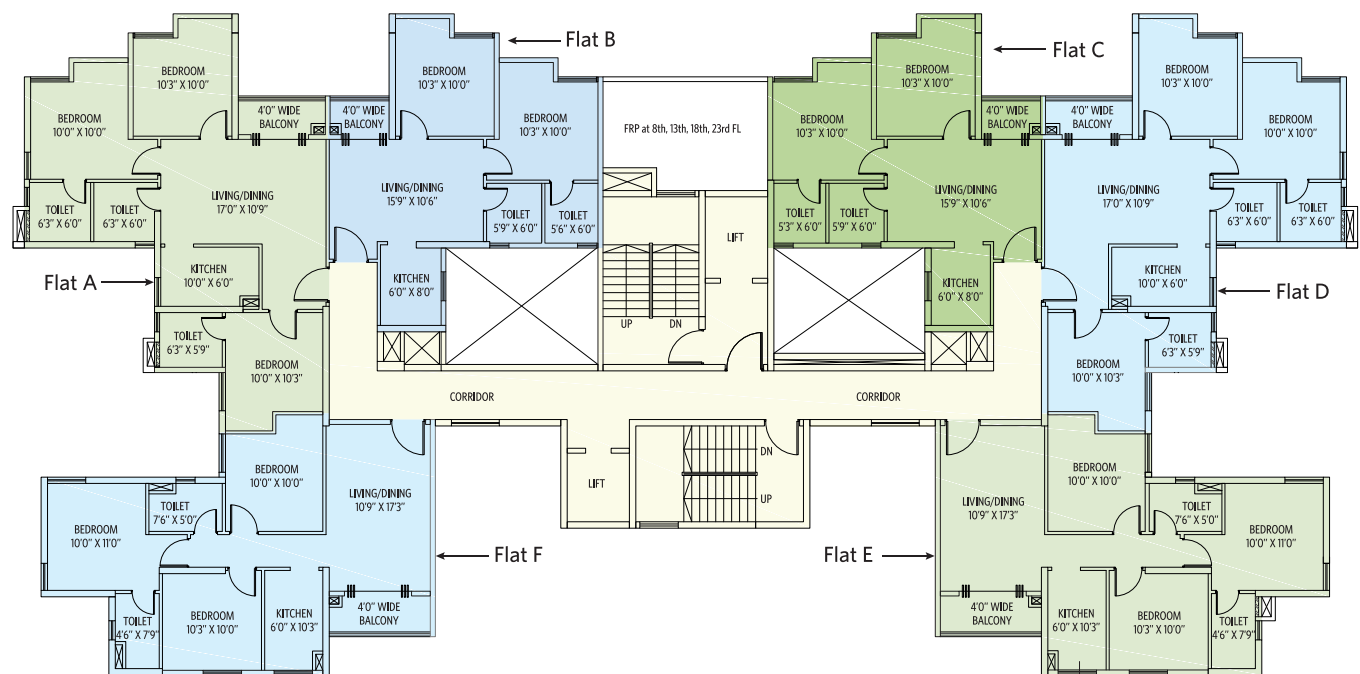
Unit in sq ft

BHK = Bedroom/Hall/Kitchen, T = Toilet, FRP= Fire Refuge Platform, CA = Carpet Area, BA = Balcony Area, BUA= Built Up Area

# Harbour (Block-1H)

## Typical Floor Plan (2nd-20th)

Proposed Future Block



**Flat E- 3BHK+2T**



Flat	Type	CA	BA	BUA
A	3BHK + 3T	781	30	894
B	2BHK + 2T	544	20	630
C	2BHK + 2T	543	20	630
D	3BHK + 3T	781	30	894
E	3BHK + 2T	731	38	853
F	3BHK + 2T	730	38	853

Unit in sq ft

BHK = Bedroom/Hall/Kitchen, T = Toilet, FRP= Fire Refuge Platform, CA = Carpet Area, BA = Balcony Area, BUA= Built Up Area



**SIDDHA**

**CORPORATE OFFICE**

Siddha Park 99A Park Street Kolkata 700016 India

**P** +91 80 4876 7767

**E** info@siddhagroup.com **W** siddhagroup.com

**edenREALTY**  
Building Dreams. Designing Lifestyle

**CORPORATE OFFICE**

Metropolitan Building 7 Jawaharlal Nehru Road Kolkata 700013 India

**P** +91 33 6626 4100 **E** info@ervpl.com **W** ervpl.com

**SITE OFFICE**

561 Lakeview Park Road Bonhooghly Opposite Indian Statistical Institute on BT Road Kolkata 700108 India

**E** lakeville@siddhagroup.com **W** siddhaedenlakeville.com

**SKYWALKS**  
AT SIDDHA

Follow Us



Download Free Siddha Group App



Project Financial  
Assistance



This document is not a legal offering and all features, specifications, dimensions, amenities, layout images and other aspects of the apartments/building(s)/complex mentioned in this document are only representational, informative and not in scale, which may be subject to change/revision/alteration in terms of approvals, orders, directions and/or regulations of the concerned/relevant authorities and/or compliance with laws/regulations in force from time to time.

Phase I - HIRA/P/NOR/2018/000183

Phase II - HIRA/P/NOR/2019/000385

**hira.wb.gov.in**