



yoovillas







The Panchshil Club and Villas. Architectural rendition.

LUXURY REAL ESTATE

Raised to reinvent unique experiences, YOO Villas are distinctively curated to foster quintessential living. It offers exquisite residences at a picturesque riverside location in Wagholi, and is styled by internationally renowned designer Kelly Hoppen for YOO.

Built to coexist in harmony with nature, it offers a vantage point to capture the murmur of nature, through all its seasons.

Well-appointed homes at YOO Villas Pune, are conceived with modern comfort in a space that permeates through every detail, avant-garde flawless luxury.

—

“NOT MANY TIMES DOES A PROJECT COME LONG THAT HAS A PICTURE PERFECT SITE AND A VISIONARY DEVELOPER. YOO VILLAS IS ONE SUCH PROJECT IN WHICH THE YIN AND THE YANG ARE IN PERFECT HARMONY.”

SHEKAR GANTI, ARCHITECT AND MASTER PLANNER

MASTERPLAN

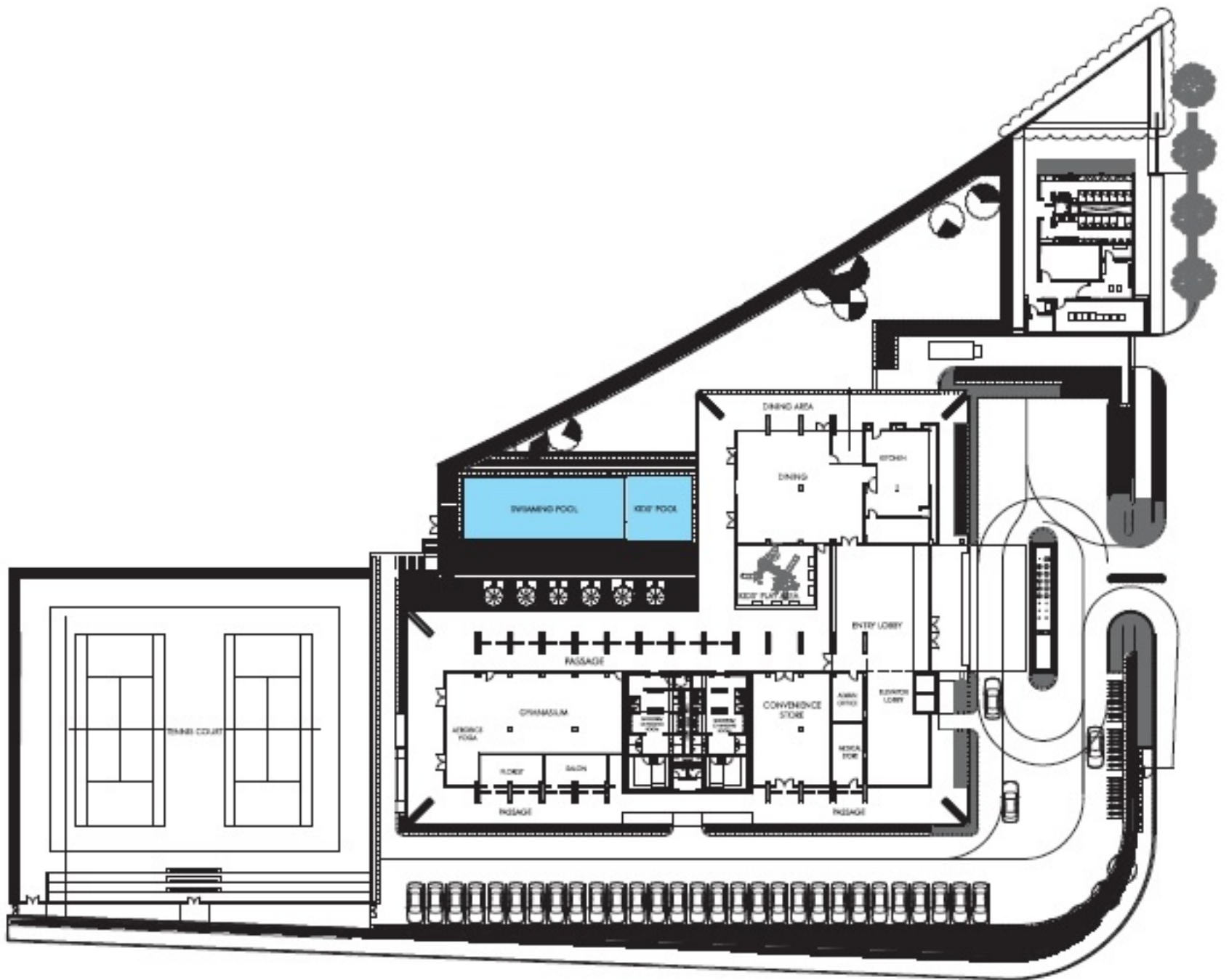
- RERA No.P52100010632
- Completed
 - Proposed

Villa Type V3 (Nos. 109 to 117 & 122 to 151) & Type V2 (Nos. 285 to 290) have been completed before 1st May, 2017. Balance villas are proposed.





The Panchshil Club. Architectural rendition.



LIFESTYLE CHOICES

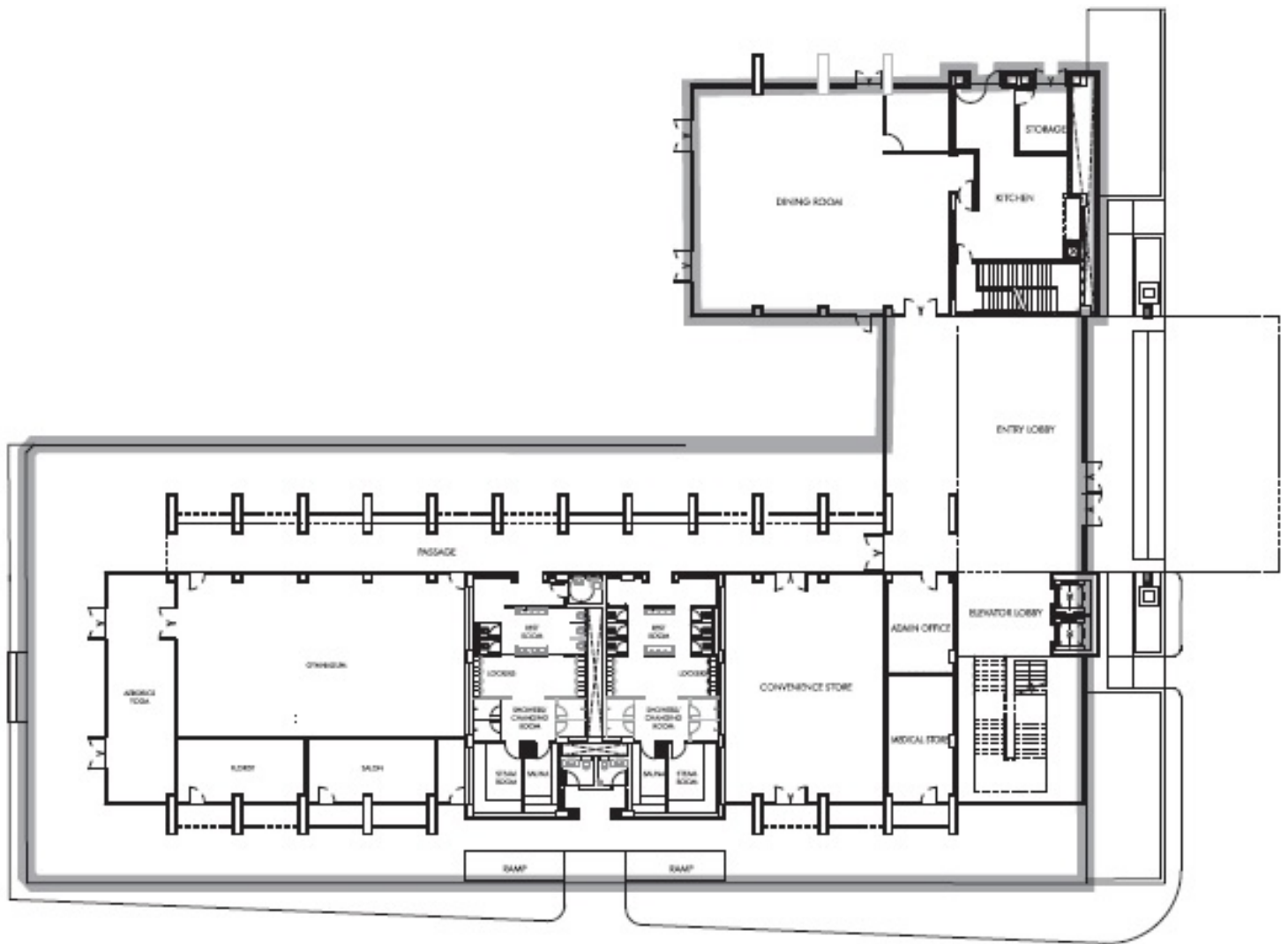
Residents have access to the private, Kelly Huppen designed The Panchshil Club that is located in the centre of YOO Villas.

The Panchshil Club is a reflection of urban sophistication, carefully melded with choicest of luxury lifestyle experience.

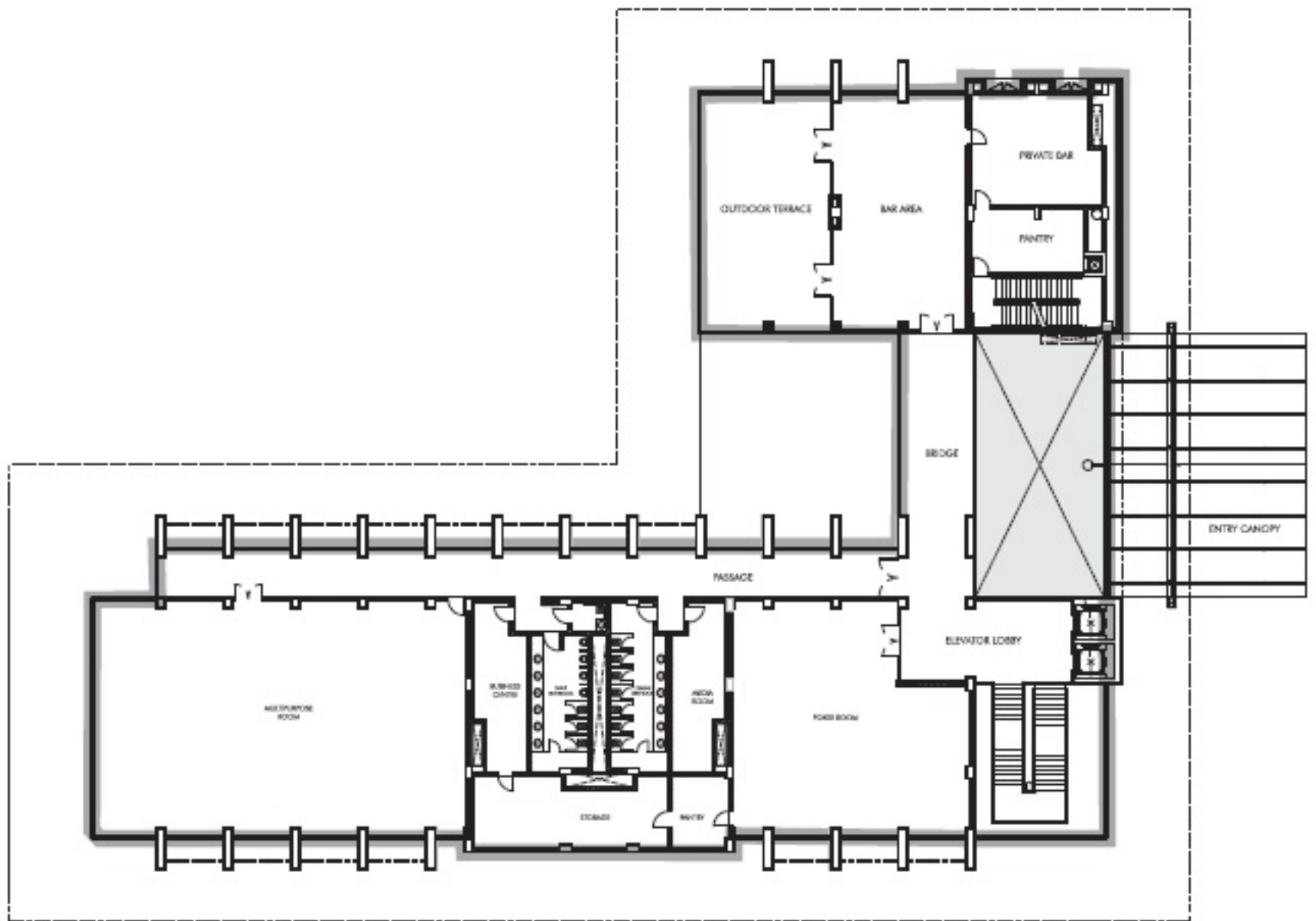
The Panchshil Club is equipped with:

SWIMMING POOL
KIDS' POOL
KIDS' PLAY AREA
LOUNGE
RESTAURANT
MULTI-PURPOSE ROOM
FITNESS CENTRE
TENNIS COURT
AEROBICS/YOGA ROOM
FLORIST
CONCIERGE SERVICE
CONVENIENCE STORE
SAUNA/STEAM ROOM
ATM
SAION
POKER ROOM
BUSINESS CENTER
MEDICAL STORE
MEDIA ROOM

—



THE PANCHSHIL CLUB GROUND FLOOR PLAN



THE PANCHSHIL CLUB FIRST FLOOR PLAN



SEA BREEZE

The Sea Breeze style lends the interior a fresh stroke of liveliness, instantly making the residents feel at ease. The palette makes for a light and snug interior by combining bleached woods, crisp linen textures with white lacquered oak and taupe coloured glass. Textured mirror and ironmongery using clear cut glass and polished nickel adds to the finesse and elegance with freshness at its core. The Sea Breeze Palette is synonymous with simplicity and induces unfaded freshness throughout the day.



VINTAGE

Vintage Palette is the modern-day blend of luxury and timelessness. It uses reclaimed timber alongside black granite stone creating floor runners. Rich marble and silk exudes the true essence of a life curated with sheer luxury. Patterned and textured stone against taupe coloured glass and bronze finishes, reflects quintessence accorded with élan. The cozy and picturesque character suggests of an interior doused in history – something you can call your very own.



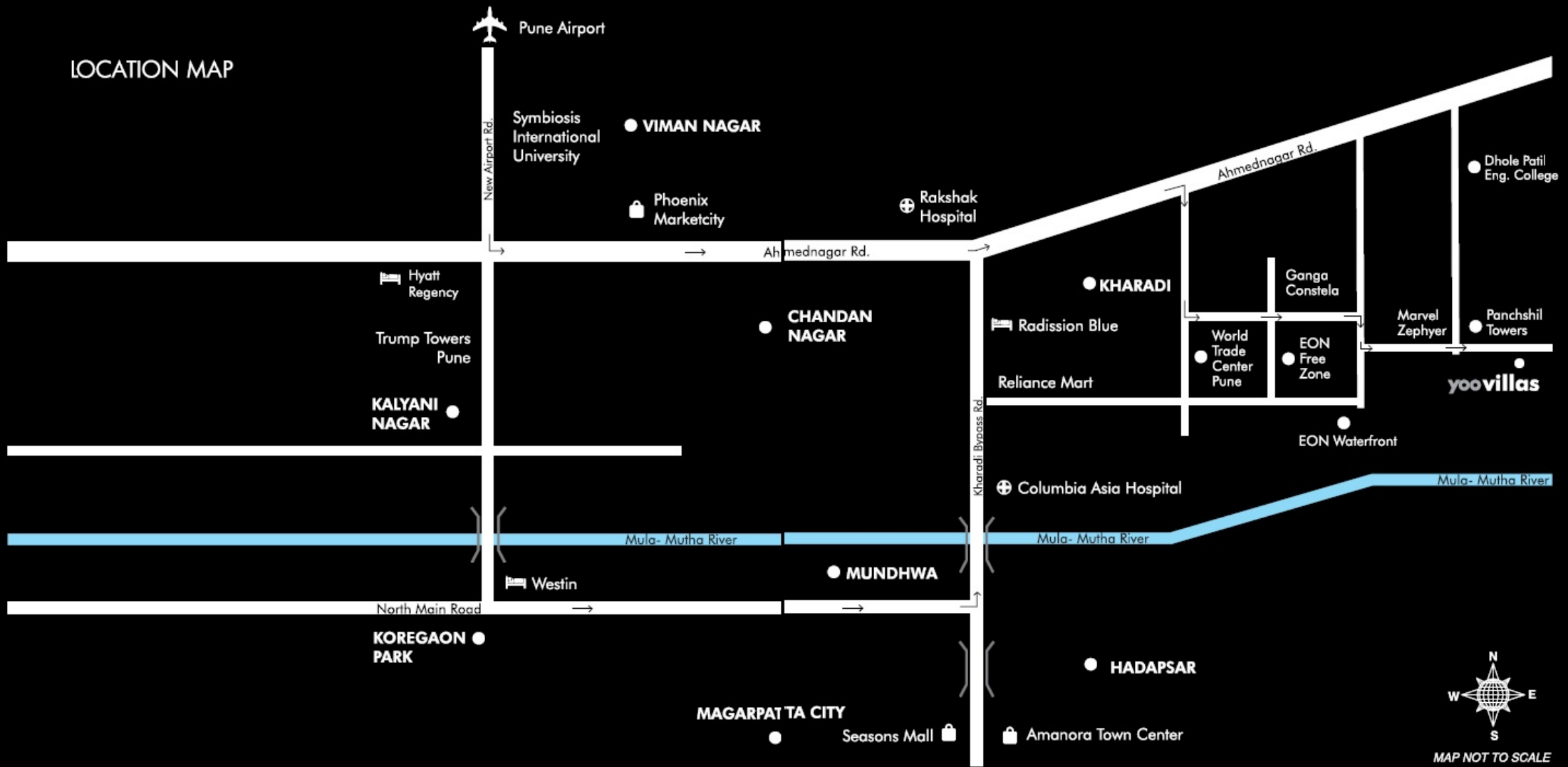


Villa 2 Front View, Shot on location.



Villa 2 Rear View. Shot on location.

LOCATION MAP





Panchshil Realty is one of India's finest luxury real-estate developers that believe in creating timeless luxury. Having successfully delivered 21 million sq. ft. of prime real estate along with 20 million sq. ft. under development across multi-asset classes, Panchshil's portfolio spans across high-end residential developments, IT parks, built-to-suit office spaces, special economic zones (SEZs), hotels, convention centers, and luxury retail malls.

Panchshil's key developments comprise of Trump Towers Pune, yoopune by Philippe Starck, International Convention Centre, World Trade Center Pune, and an award-winning built-to-suit office campus for Cummins India amongst others. With global partners like YOO, The Trump Organization, JW Marriott, The Ritz-Carlton, Hilton, Oakwood and World Trade Centers Association, Panchshil has played a significant role in putting Pune on the world map and has added to its growing global identity.

Recipient of multiple awards in property development, Panchshil's 360° approach covers everything from planning, construction, architectural and design services to infrastructure development, automation and facility management services.

Project key team members

Principal Architect – Shekar Ganti
Designer – Kelly Hoppen