

PRESENTING  
FULLY-FURNISHED AIR-CONDITIONED  
1 BHK OPTIMUM-SPACE RESIDENCES



thoughttrains

Artist's Impression



RUPAREL  
REALTY  
LIVE ICONIC

www.ruparel-optima.in

☎ 022 2439 0000 | SMS RUPAREL to 58888

Site Add.: CTS No.471 A, Village Kandivali, Opp Pooja Enclave,  
Near Oscar Hospital, Old Link Road, Kandivali West, Mumbai - 400 067

Corporate Office: Ruparel Iris, L1 & L2, Senapati Bapat Marg,  
Next to Magnet Mall, Opp. Matunga West Station, Matunga West,  
Mumbai - 400 013.

Email: info@ruparel.in, sales@ruparel.in

Disclaimer: This printed material does not constitute any form of an agreement and all purchases/lease shall solely be governed by the terms of the agreement for sale/lease.  
All finishes are subject to change at the discretion of the Interior Designers, in the interest of continual improvement of the project. Conditions apply.



WELCOME TO YOUR OWN  
EXCLUSIVE RESIDENCE  
IN THE HEART OF KANDIVALI (W),  
SURROUNDED BY 25 ACRES OF  
WORLD-CLASS FACILITIES



A UNIQUE OFFERING  
OF FULLY-FURNISHED  
AIR-CONDITIONED RESIDENCES  
IN A PRIME LOCATION





## EXPERIENCE THE NEXT LEVEL OF LIVING IN SKY-HIGH TOWERS OF GRANDEUR

### PROJECT HIGHLIGHTS

- 2 MAGNIFICENT 22 STOREYED TOWERS
- FULLY-FURNISHED AIR-CONDITIONED  
1 BHK OPTIMUM-SPACE RESIDENCES
- GRAND CLUBHOUSE WITH POOL & GYM
- LUSH DESIGNER LANDSCAPED GARDENS
- SELECT HIGH STREET RETAIL AVENUES
- LOCATED WITH EASY ACCESS TO  
UPCOMING METRO & COASTAL ROAD

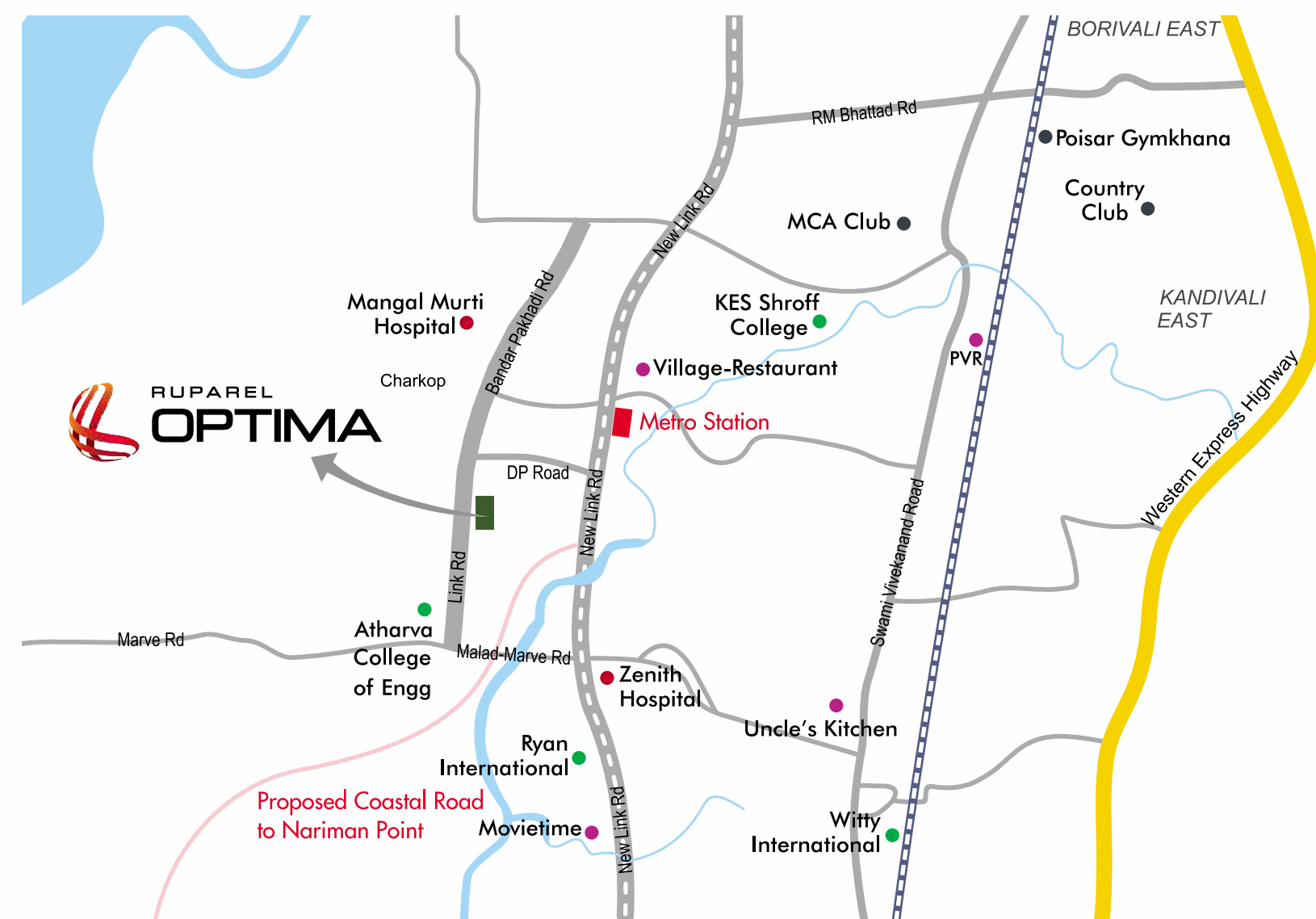


Artist's Impression

LIVE IN THE ADDRESS  
OF THE FUTURE WITH  
UNMATCHED CONNECTIVITY  
& CONVENIENCES

PROPOSED KANDIVALI-NARIMAN POINT COASTAL ROAD

LOCATION MAP



- Landmarks
- Healthcare
  - School & Colleges
  - Club
  - Entertainment
  - Kandivali Metro



FUTURE INFRASTRUCTURE LANDMARKS  
PROMISING SUPREME CONNECTIVITY ACROSS MUMBAI

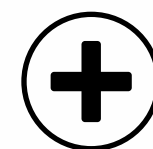


PROPOSED KANDIVALI - NARIMAN  
POINT COASTAL ROAD - 5 MINS



UPCOMING METRO STATION  
2 MINS

OTHER PROMINENT LANDMARKS WITHIN EASY REACH



ZENITH HOSPITAL  
13 MINS



RYAN INTERNATIONAL  
SCHOOL 10 MINS



KANDIVALI RAILWAY  
STATION 9 MINS



INFINITY MALL,  
MALAD 13 MINS

ICONIC TOWERS  
THAT ELEVATE YOU TO  
AN UPSCALE LIFESTYLE



Artist's Impression



PLAY, ENJOY & CELEBRATE  
WITH THE BEST OF HEALTH  
& ENTERTAINMENT OPTIONS

LIFESTYLE FACILITIES

# EXPERIENCE THE JOY OF LUXURIOUS COMMUNITY LIVING

## LIFESTYLE FACILITIES

- GRAND CLUBHOUSE FOR HEALTH & ENTERTAINMENT
- DESIGNER LANDSCAPED GARDENS
- SWIMMING POOL
- HI-TECH GYMNASIUM WITH MODERN EQUIPMENT
- INDOOR GAMES ARENA
- JOGGING TRACK
- SENIOR CITIZEN SITTING LOUNGES







THOUGHTFULLY DESIGNED,  
FULLY FURNISHED  
AIR-CONDITIONED RESIDENCES

APARTMENT FEATURES

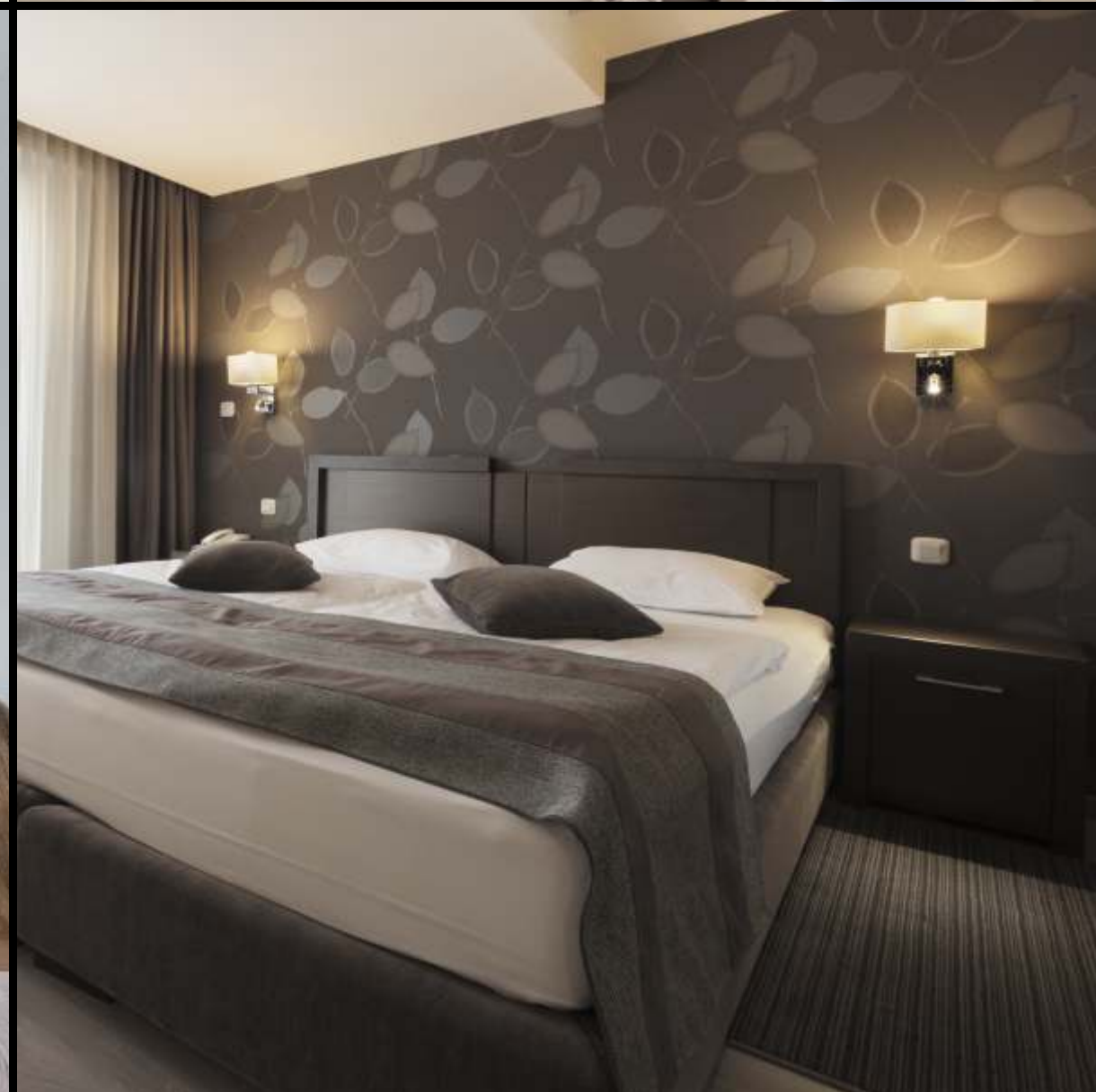
A UNIQUE CONCEPT  
OF FULLY-FURNISHED RESIDENCES  
READY FOR YOUR ARRIVAL




LIVE THE LIFE YOU ALWAYS DREAMED OF  
IN YOUR OWN WORLD  
OF COMFORT & CONVENIENCE

#### APARTMENT FEATURES

- FULLY-FURNISHED AIR-CONDITIONED 1 BHK OPTIMUM-SPACE RESIDENCES
- ELEGANT LIVING SPACES WITH VITRIFIED FLOORING
- ALUMINIUM SLIDING FRENCH WINDOWS
- SPACIOUS BEDROOMS WITH SLIDING WINDOWS
- MODULAR KITCHEN IN EACH APARTMENT
- BATHROOMS WITH BRANDED SANITARY WARE
- VIDEO-DOOR PHONE IN EACH APARTMENT





MAGNIFICENT TOWERS THAT  
STAND APART AND BRING  
GRANDEUR TO YOUR HOME

TOWER FEATURES

## HIGH-END SERVICES & UTILITIES TO ENSURE THE BEST FOR YOU

## TOWER FEATURES & FACILITIES

- ELEGANT LIFT LOBBIES WITH HIGH-SPEED ELEVATORS
- STILT PARKING ON GROUND LEVEL
- ADVANCED INTEGRATED FIRE SAFETY
- TECHNOLOGICALLY ADVANCED APP BASED TOWER
- SECURITY SYSTEM BY DIGITAL GORKHA



### Digital Gorkha -

Technologically advanced mobile app based security features exclusively available for projects by Ruparel Realty. In case of theft, burglary or fire, under the supervision of Digital Gorkha, an amount of Rs.10 lacs will be insured.



LIVE A PRIVILEGED LIFE  
IN AN EXCLUSIVE  
RESIDENTIAL COMMUNITY



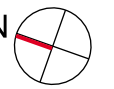
Artist's Impression

# MASTER LAYOUT



## LEGEND

1. Club House
2. Indoor Games Arena
3. HI-TECH GYMNASIUM
4. Swimming Pool with Pool deck
5. Cafe with Juice bar
6. Lawn
7. Senior Citizen Area
8. Yoga and Meditation Lawn



# TYPICAL FLOOR PLAN

## TOWER 1

(1<sup>st</sup> to 7<sup>th</sup>, 9<sup>th</sup> to 14<sup>th</sup>, 16<sup>th</sup> to 22<sup>nd</sup>)

NOTE : FLAT NO. 2 IS REFUGE AREA ON 8th & 15th FLOOR

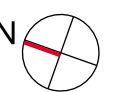
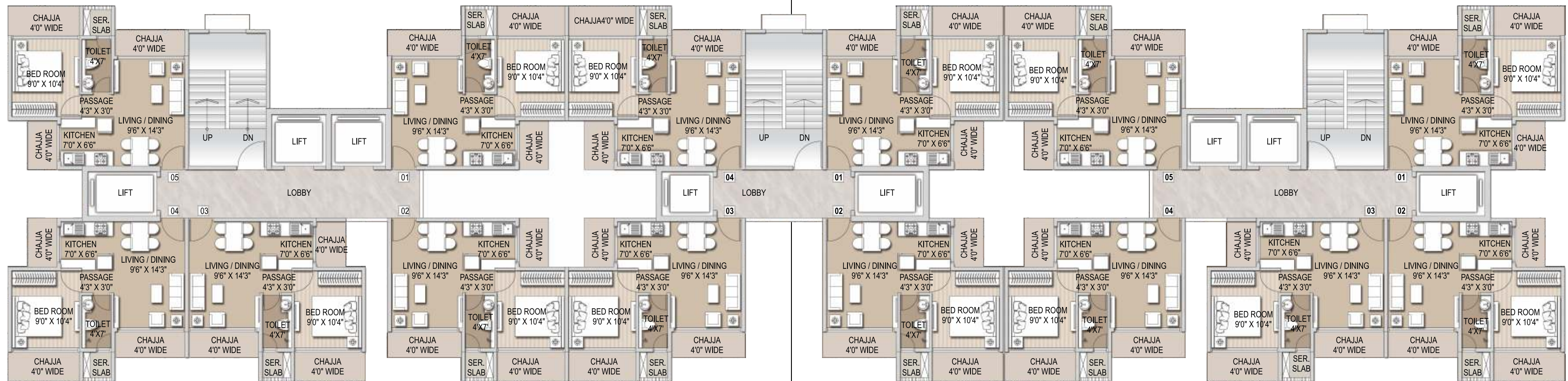
WING 'C'

NOTE : FLAT NO. 2 IS REFUGE AREA ON 8th & 15th FLOOR

WING 'B'

NOTE : FLAT NO. 4 IS REFUGE AREA ON 8th & 15th FLOOR

WING 'A'





# TYPICAL FLOOR PLAN

## TOWER 2

(1<sup>st</sup> to 7<sup>th</sup>, 9<sup>th</sup> to 14<sup>th</sup>, 16<sup>th</sup> to 22<sup>nd</sup>)

NOTE : FLAT NO. 2 IS REFUGE AREA ON 8th & 15th FLOOR

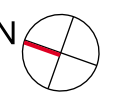
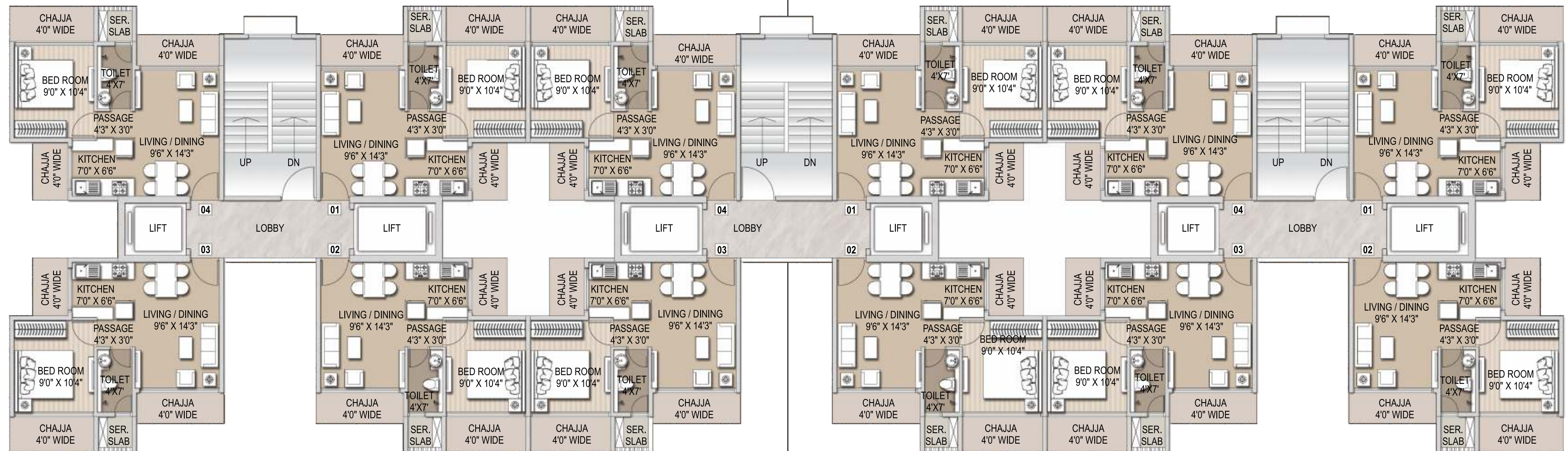
WING 'C'

NOTE : FLAT NO. 2 IS REFUGE AREA ON 8th & 15th FLOOR

WING 'B'

NOTE : FLAT NO. 3 IS REFUGE AREA ON 8th & 15th FLOOR

WING 'A'



# UNIT PLAN

## 1 BHK ISOMETRIC PLAN



## OPTIMALLY DESIGNED RESIDENCES THAT GIVE YOU THE BEST OF LIFESTYLE, COMFORT & CONVENIENCE

### PROJECT HIGHLIGHTS

- 2 MAGNIFICENT 22 STOREYED TOWERS
- FULLY-FURNISHED AIR-CONDITIONED 1 BHK OPTIMUM-SPACE RESIDENCES
- GRAND CLUBHOUSE WITH POOL & GYM
- LUSH DESIGNER LANDSCAPED GARDENS
- SELECT HIGH STREET RETAIL AVENUES
- LOCATED WITH EASY ACCESS TO UPCOMING METRO & COASTAL ROAD

### LIFESTYLE FACILITIES

- GRAND CLUBHOUSE EXCLUSIVELY FOR RESIDENTS
- DESIGNER LANDSCAPED GARDENS
- SWIMMING POOL
- HI-TECH GYMNASIUM WITH MODERN EQUIPMENT
- INDOOR GAMES ARENA
- JOGGING TRACK
- SENIOR CITIZEN SITTING LOUNGES

### APARTMENT FEATURES

- FULLY FURNISHED AIR-CONDITIONED 1 BHK OPTIMUM-SPACE APARTMENTS
- SPLIT AIR-CONDITIONER IN LIVING ROOM & BEDROOM
- ELEGANT LIVING SPACES WITH VITRIFIED FLOORING
- ALUMINIUM SLIDING FRENCH WINDOWS
- SPACIOUS BEDROOMS WITH SLIDING WINDOWS
- MODULAR KITCHEN IN EACH APARTMENT
- BATHROOMS WITH BRANDED SANITARY WARE, EXHAUST FANS & ANTI-SKID TILES
- VIDEO-DOOR PHONE IN EACH APARTMENT
- CONCEALED WIRING WITH ADEQUATE POINTS FOR ALL HOME APPLIANCES

### TOWER FEATURES & FACILITIES

- ELEGANT LIFT LOBBIES WITH HIGH-SPEED ELEVATORS
- 24 HOUR POWER BACKUP FOR PUBLIC AREAS
- STILT PARKING ON GROUND LEVEL
- ADVANCED INTEGRATED FIRE SAFETY
- TECHNOLOGICALLY ADVANCED APP BASED TOWER SECURITY BY DIGITAL GORKHA

Govt. subsidy : Customers may avail a central government subsidy of Rs.2.5 lacs for affordable housing under Pradhan Mantri Awas Yojna for families with household income below Rs.18 lacs



# THE CREATOR OF LANDMARKS AND LIFESTYLE

ONGOING PROJECTS

