

**PROJECT
BY**

**DEEPA
GROUP**



**MAHA RERA REGD :
P51700052606**



DEEPA LANDSCAPE

Your dream our reality

JAI GANESH C.H.S

(REGD)

1BHK & 2BHK FLATS AVAILABLE

We have
Served More Than
5000 Happy Homes To
Happy Families



DEEPALI LANDSCAPE
Your dream our reality

JAI GANESH C.H.S

1BHK & 2BHK FLATS AVAILABLE

ABOUT US

Stronger Service For You !:

We Have Served More Than 5000 Happy Homes To Happy Families .

Our Company Has Been Serving In This Industry For Over 20 Years With A Commitment To Our Customers. Deepali Group Builders And Developers Was Founded With Client Centric Goal . We Research , Analyse And Determine The Best Cost - Effective And Regulatory Design . To Suit Our Customers Needs .We Are Backed With A Team Of Architects And Project Planners Who Create Inimitable Well Planned Neighborhoods. Our Company Has Always Tried To Live Up To The Trust It Have Created Among To Customers .

What We Offer

Affordable Yet Well Planned Home. Quality And Efficient Construction . Project Handed Over In Time. Ensuring Appropriate Care And Expertises While Building To Provide Safe And Sound Homes

Our Vision

We Intend To Be The " Very Best For Our Customers , Happy Making Your Own Happy Homes



A & B WING



DEEPALI LANDSCAPE

Your dream our reality

JAI GANESH C.H.S

1BHK & 2BHK FLATS AVAILABLE



C & D WING

ENTRANCE LOBBY & AMENITIES



PROJECT HIGHLIGHTS

- Rain Water harvesting
- Branded Elevators
- Power Backup for Lifts & Common Areas
- LED Lights in Common Areas
- Entrance Lobby
- CCTV Security System
- Project will be Register under Maha Rera
- Borewell will be provided.

3D CUT VIEW & SPECIFICATION

- **Living**
Decorative Pop Ceiling With Led Light Provision
- **Flooring**
Superior Quality vitrified floor tiles
- **Windows**
*Elegant durable powder coated heavy gauge for noise reduction
*Bottom track sealed with silicon for water resistance.
Windows with mosquito net & granite/ marble.
- **Doors**
Wooden frame for main door
Decorative laminated / skin shutter doors with brass fittings and night latch.
Both side laminated / skin internal doors with lock and key system.
Teak wood door frame.
- **Electrical**
Concealed copper wiring with sufficient number of points in each flats
Provision for wi fi point
TV and telephone socket in drawing Room
Provision of AC point in all bedrooms
Provision for exhaust fan in kitchen
Provision of inverter wiring in the whole flat
- **Kitchen**
Granite Kitchen platform with stainless steel sink .
Exclusive concept tiles in kitchen
Water purifier point in kitchen
- **Bathroom And Toilet**
Good quality Bakelite / skin / water resistant doors for bathroom/ toilets
Marble / granite door frames
Concealed branded plumbing C - pvc / U - pvc
Hot & cold water mixture
Branded CP fitting & sanitary fitting
RCC potmala with water tank provision
- **Paint**
Distemper paint in the whole flat
Enamel paints for M.S. grill
Outer Acrylic Paint



SMART 1 BHK



SMART 2 BHK

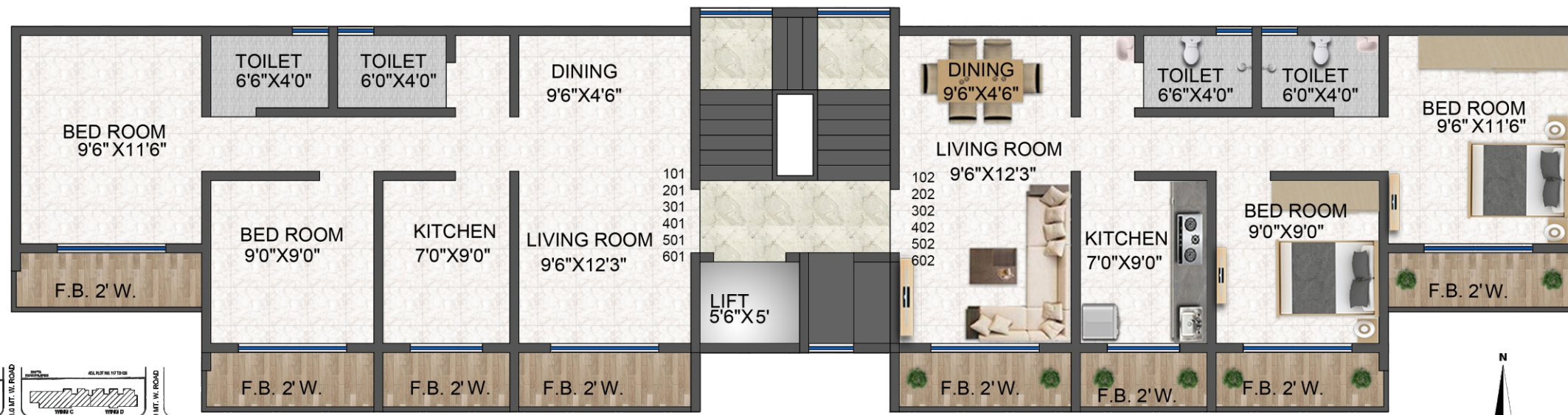
FLOOR PLAN



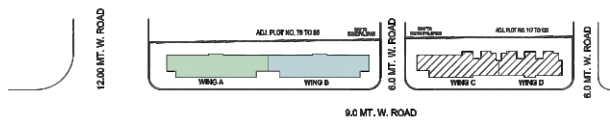
TYPICAL FLOOR PLAN 1ST TO 6TH

A-WING

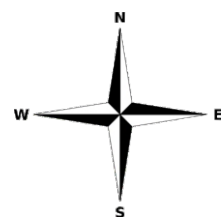
TYPICAL FLOOR PLAN 1ST TO 6TH



B-WING



BLOCK PLAN

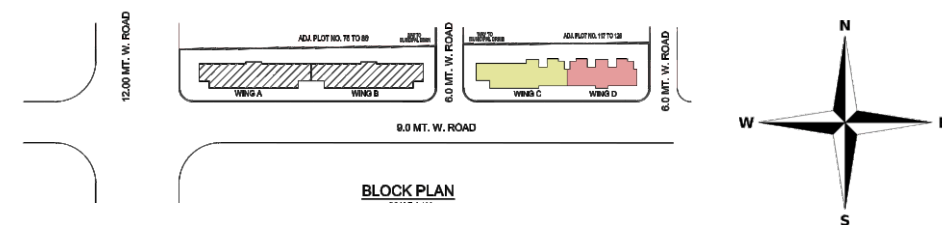


FLOOR PLAN

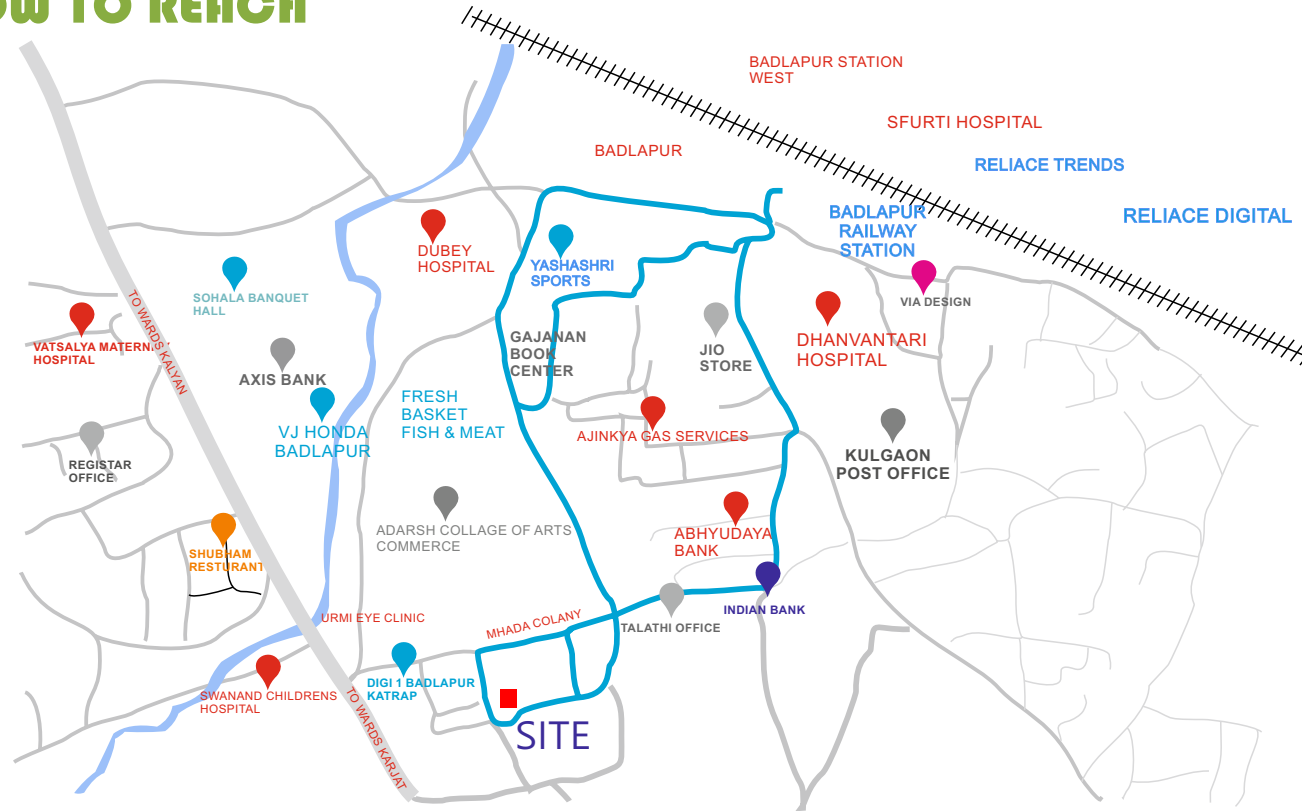
TYPICAL FLOOR PLAN 1ST TO 6TH



TYPICAL FLOOR PLAN 1ST TO 6TH



HOW TO REACH



LOCATION HIGHLIGHTS

RAILWAY STATION	: 5MINS
RELIANCE SMART	: 3MINS
ADARSH SCHOOL & COLLEGE	: 2MINS
NEAR HOSPITALS BANK	
WELL CONNECTED TO	: 1MINS
KARJAT HIGHWAY	

BUILDERS & DEVELOPERS



DEEPALI LANDSCAPE

Your dream our reality

SITE ADDRESS :

JAI GANESH C.H.S, PLOT NO. 17 TO 20, S.NO. 42
(PT) NEAR DIGI-1, KULGAON, BADLAPUR (EAST)

OFFICE ADDRESS :

GEET GOPAL, OFFICE NO 103,
NEAR AATITHI HOTEL, KULGAON BADLAPUR (EAST)



MAHA RERA REGD :
P51700052606

PROJECT CREDITS

STRUCTURAL CONSULTANT

ATUL KUDTARKAR &
ASSOCIETES PVT. LTD

ARCHITECT

ARCHITECTS INC
(BADLAPUR-W)

LEGAL ADVISOR

ADV. FERNANDES
(NEW MUMBAI-11)