



# EVOLVE

Exquisite Homes with Sky Garden  
@ Gundlapochampally

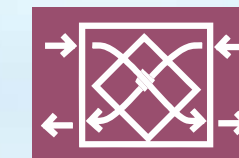
# EVOLVE

Exquisite Homes with Sky Garden

We are living in a fast changing world. Everything around is changing for better. As we continue to evolve, our home should too. Besides understanding our needs, it should offer the comfort, atmosphere, luxury and lifestyle to ensure everlasting joy.

Welcome to Evolve!

## THE FIRST-OF-ITS-KIND FUTURE READY HOMES



Fresh Air System  
for Cleaner Air  
in all Homes



False Ceiling  
with Lighting  
in all Homes



Pre Installed  
Modular Kitchen  
in all Homes



Invisible Grills  
in Balconies  
for extra Safety



Alkaline  
Drinking Water  
in all Homes



Central  
Vaccum System  
Ready Homes








Fresh Air System  
for Cleaner Air  
in all Homes



Pre Installed  
Modular Kitchen  
in all Homes



### A BREATH OF FRESH AIR, LITERALLY.

Delight in safe, clean and healthy homes that come with in-built ERV systems. Pulling out the bad air and replacing it with good air, ERV systems improve the quality of air and quality of life, while saving on energy and reducing costs. Breathe in fresh air, without having to worry about the humidity and the weather outside.

### EVOLVE IN THE TRUEST SENSE

Step inside to find a home design that is centered on the living space. Adding value to the home by saving you cost and time, pre-installed modular kitchen of top-notch quality offers ample space for easy movement and makes cooking pleasant.





Alkaline  
Drinking Water  
in all Homes

### Health Benefits of Alkaline Water

- Improves Digestion
- Improves Intestinal Health
- Improves Hydration Levels
- High Energy & Endurance
- Healthy Organs
- Healthy Skin
- Boosts Metabolism
- Cholesterol Reduction

## THE JOY OF SAFE, PURE WATER

Every apartment of Evolve comes with Alkaline Water System pre-installed in Kitchen. This ensures residents get clean, mineral-rich water in their homes to live a healthy life.



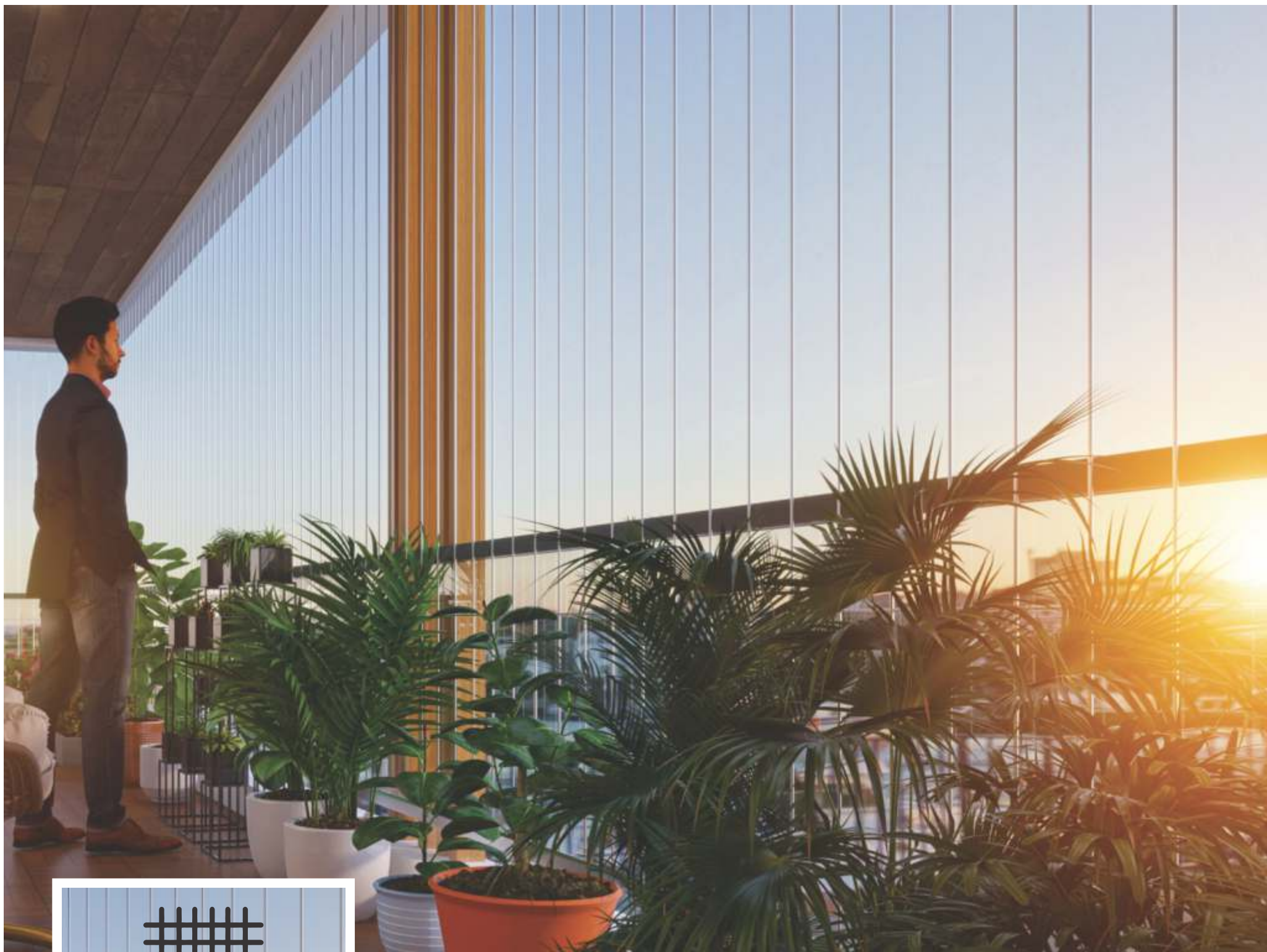
False Ceiling  
with Lighting  
in all Homes



## A BRIGHT & BLISSFUL PLACE TO LIVE

Create your own sunshine at home, choose the mood-boosting false ceiling lights. Making your home look more presentable and elegant, these lights effectively and efficiently add warmth and highlight your space.





**Invisible Grills  
in Balconies  
for extra Safety**

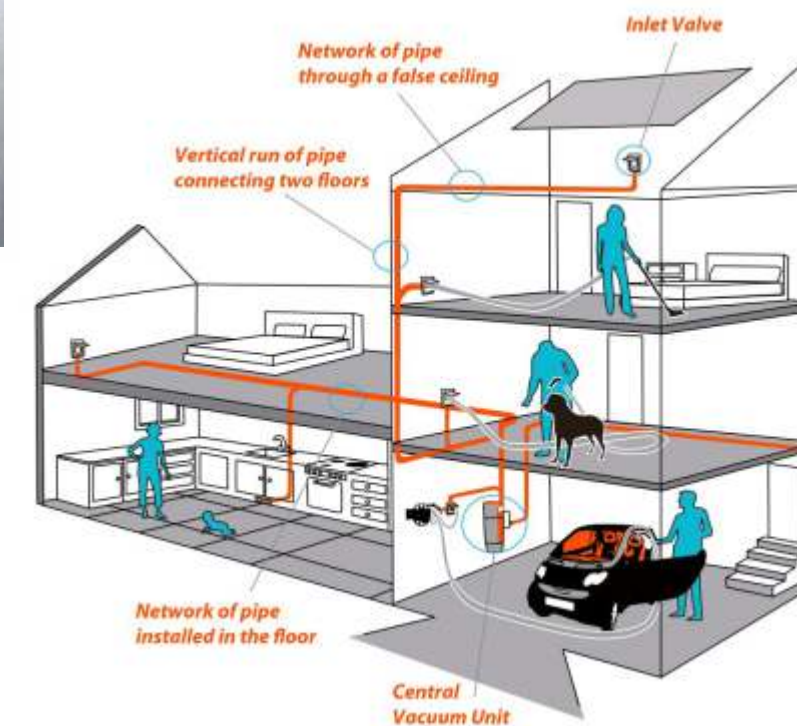


### DISCOVER AESTHETICALLY SAFE HOMES

Experience the most innovative and luxurious homes with safety invisible grills for balconies. Besides unhindered panoramic views, they ensure the safety of your loved ones, specially the kids.



**Central  
Vaccum System  
Ready Homes**



### ENTER A CLEAN, SAFE HOME

Discover thoughtfully designed homes with built-in CVS. Improving the indoor air in your home, CVS systems make cleaning faster, more thorough and much more convenient. Find deep clean floors, wet or dry, free from dirt and allergens in addition to homes that are energy efficient.



## UPLIFTING HOMES @ GUNDLAPOCHAMPALLY

Evolve is a residential development of pristine homes in picturesque settings. It's an oasis that brings together the splendor of nature and the sophistication of luxury. Pushing the limits of luxury in every aspect and delighting residents with experiences to cherish, it lives up to your ambition, to evolve and lead a better life.





## OVERVIEW

Site Area  
4818 Sq. Yds.

Structure  
2C + G + 8 Floors

Number of Units  
86

Type of Apartments  
2, 2.5 & 3 BHK

Apartments Range  
1240 - 2332 Sft.





MASTER PLAN



LEGEND:

- |                      |                          |                      |
|----------------------|--------------------------|----------------------|
| 1. ENTRY/EXIT        | 5. CYCLE TRACK           | 9. GAZEBO            |
| 2. WAITING AREA      | 6. SEATING UNDER PERGOLA | 10. TRANSFORMER YARD |
| 3. PATHWAY           | 7. SWIMMING POOL         | 11. WATER BODY       |
| 4. ENTRY TO BASEMENT | 8. KIDS PLAY AREA        | 12. AMPHI-THEATRE    |

TERRACE PLAN



LEGEND:

- |                          |                |
|--------------------------|----------------|
| 1. FRANGIPANI COURT      | 5. OUTDOOR GYM |
| 2. VIEWING LAWN & LOUNGE | 6. YOGA LAWN   |
| 3. MINI THEATRE          | 7. PAVILION    |
| 4. BARBEQUE LOUNGE       |                |



## THE FIRST WOW IMPRESSION.

Crafted with care and perfected with passion, homes at Evolve are in accordance with the changing needs. The healthy environs create a feeling of zen and the rooftop terrace is a serene escape from the indoors. The natural settings not just refresh mood and breath but also add immense beauty to your surroundings.







**A PLEASANT WELCOME. ALWAYS.**

Embrace a life of peace and serenity as you drive in through an elegant and welcoming entrance. Designed to leave a lasting impression on everyone, it invites you to a richer and wholesome way of life.





## WALK YOUR WAY TO HEALTH

Take sure steps to healthy living, jog your way through the serene environs. Choose between the jogging track and the cycling track in how you would like to stay fit. Experience fresh & healthy life in the lap of nature.







## BRING OUT THE STORYTELLER IN YOU

Hang out with your gang and enjoy the views on the gazebos & deck area. Spend your lazy afternoons swaying to the cool breeze, read a book or spend time with a loved one relaxing in the joyful and soothing outdoors.



Gazebo & Deck Area



## AN INVITING SPACE FOR KIDS OF ALL AGES

Inspire your kids to spend more time outdoors, make new friends and have new experiences. Bond with your neighbours and friends over the play areas and rejoice in the interactive outdoor spaces.



Children Play Area





**FOR THOSE WHO NEED THAT EXTRA-SPACE**

Have that special family time together or entertain guests in a spacious and serene setting. Experience the pretty ambience, chilled air at the rooftop frangipani court that sets a new standard in contemporary living.

Lawn & Seating Area





Deck & Lounge



### GET INSPIRED BY NATURE

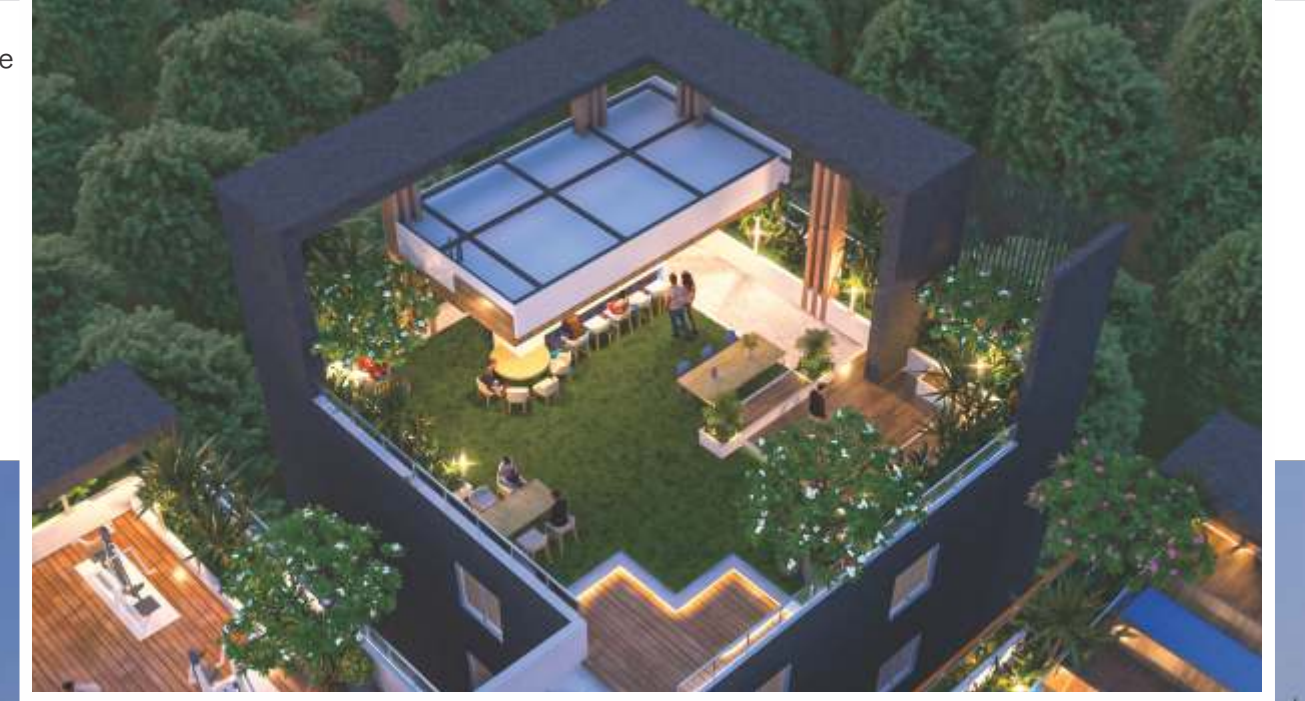
Get together with friends and enjoy the magical views of nature from the rooftop viewing lounge. Feel the tranquility in every direction and relish living in the midst of nature.



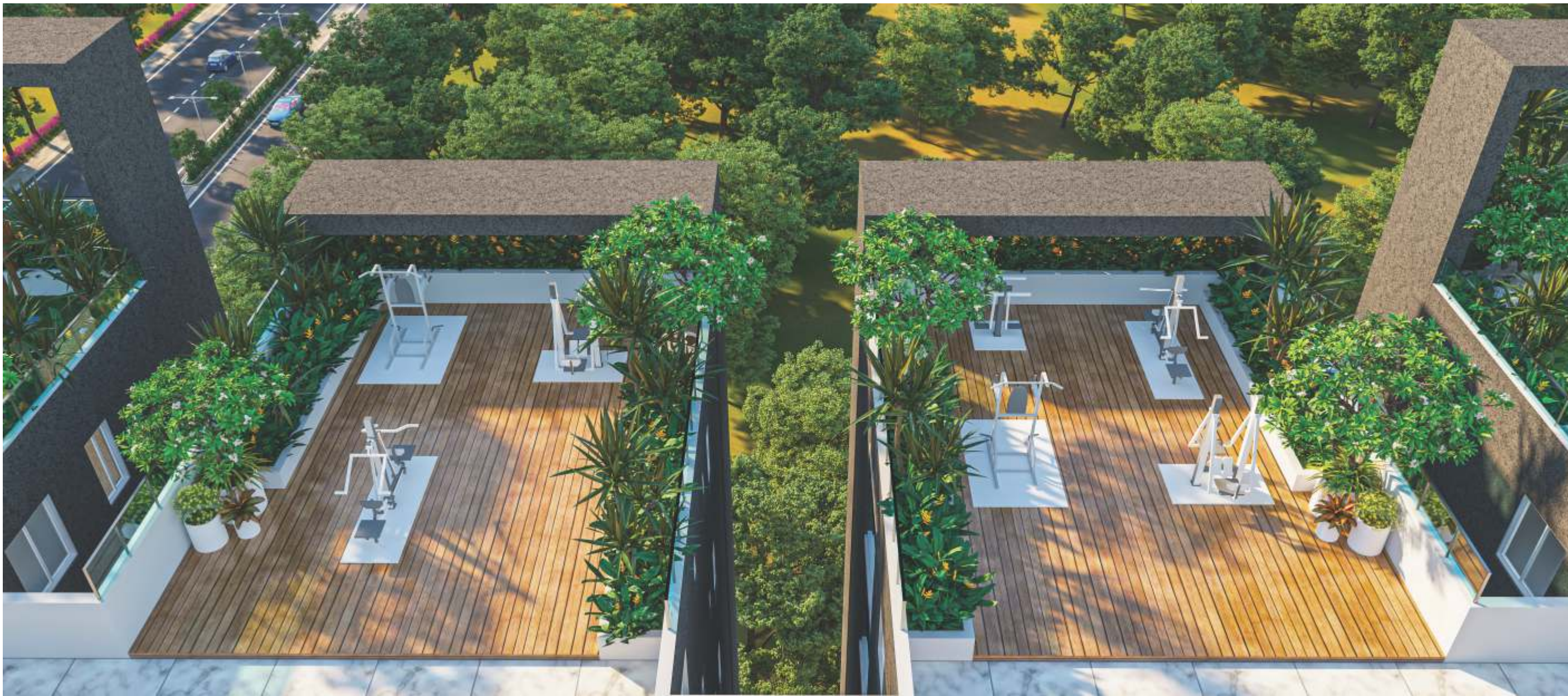
## A SPACE TO FEAST YOUR EYES

Get ready for entertainment-packed nights with your friends and family at the rooftop mini theatre. Enjoy movie night screenings paired with delicious barbecue.

Barbecue Lounge







Gym

### LIVE AN ACTIVE AND HEALTHY LIFESTYLE

Exercise with your friends in the open and make your workout fun and refreshing. Take advantage of fresh and bright outdoors; stay fit, healthy and inspired.



Yoga

### CONNECT WITH YOURSELF AND THE NATURAL WORLD

Experience the power of yoga in the peaceful outdoors, under the unobstructed big, blue sky. Breathe in fresh, clean air; soak in the ethereal surroundings and unify your mind, body and soul enjoying nature.





**LIFE HAS A NEW HUB, THE CLUBHOUSE.**

Experience the luxury and lifestyle welcoming you every moment. Step into a healthy & rejuvenating life with all the amenities you need to relax. Get the most out of life with a clubhouse that is always warm, relaxed and refined.

Reception

**Amenities:** Swimming Pool | Gym | Multipurpose Hall | ATM | Store





## A HEALTH CLUB FOR EVERYONE

Build your fitness and achieve your goals at our gym that boasts up-to-date fitness machines. Unwind after your workout or a day at work, immersing yourself in the calmness of refreshing blue waters.

Swimming Pool



Gym



Indoor Games



### **MANY MEMORIES, SINGLE ROOF.**

Experience your perfect moments, whether it is a wedding, birthday, seminar or any other special event, at the spacious multipurpose hall which can be converted into a place for indulging in indoor games.

Multipurpose Hall







Living Area



Video Door Phone



Drawing Room

### FUTURE-READY, FEATURE-RICH HOMES

Relax after a long workday or enjoy a TV show together, with the ambience and sense of a spacious home. Live in a dust-free, healthy environment with our built-in central vacuum system which makes life at home better. Hang out with family; entertain friends in the comfort of welcoming and well-designed spaces.

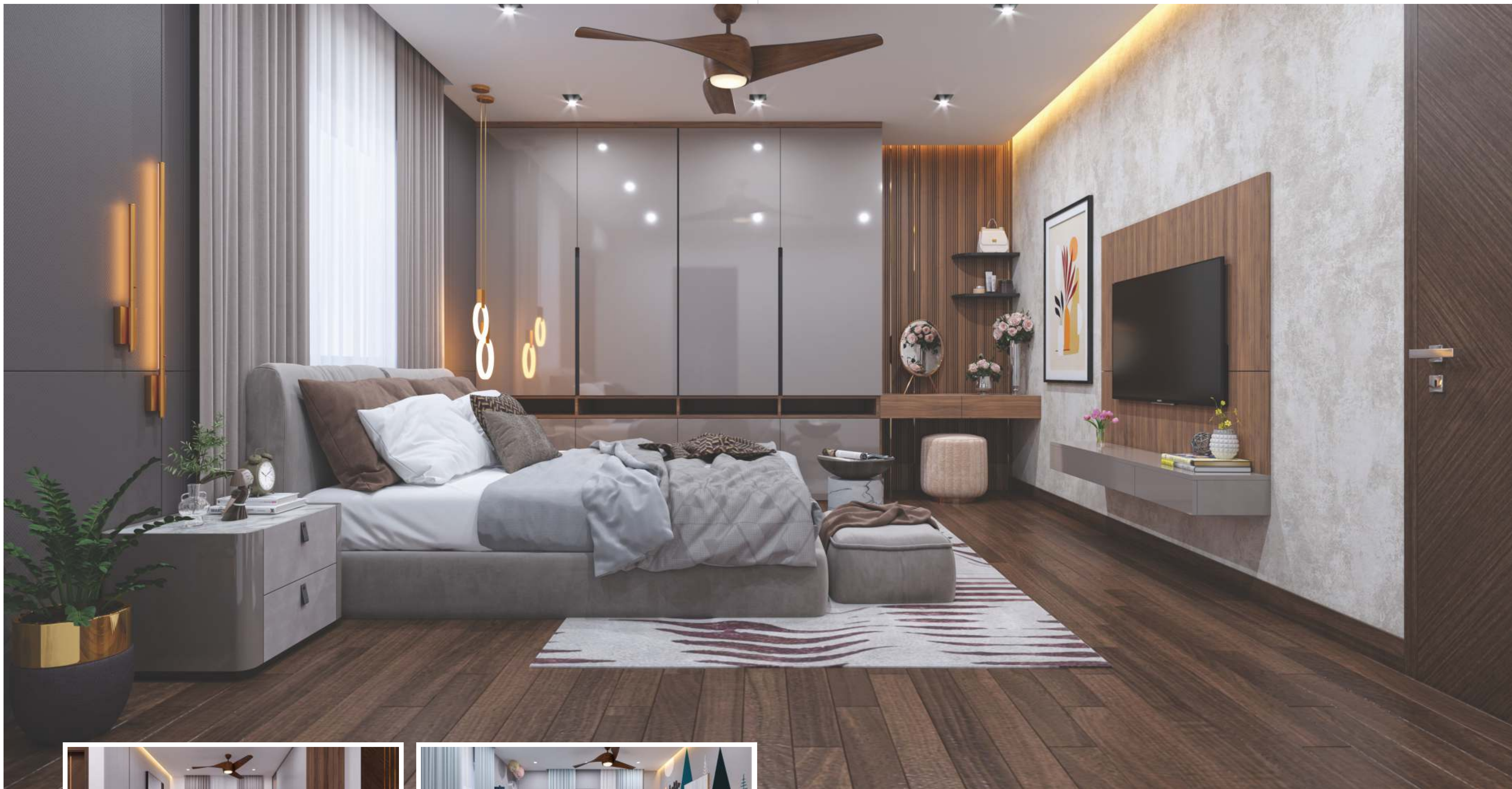




### MEALS WITH MEMORIES

Host dinner parties for guests or casual gatherings with friends at the comfort of your home- every apartment comes with pre-installed modular kitchen and false ceiling to make it a beautiful and functional. Celebrate special occasions and make memories with spaces built for entertaining.





Master Bedroom



Bedroom

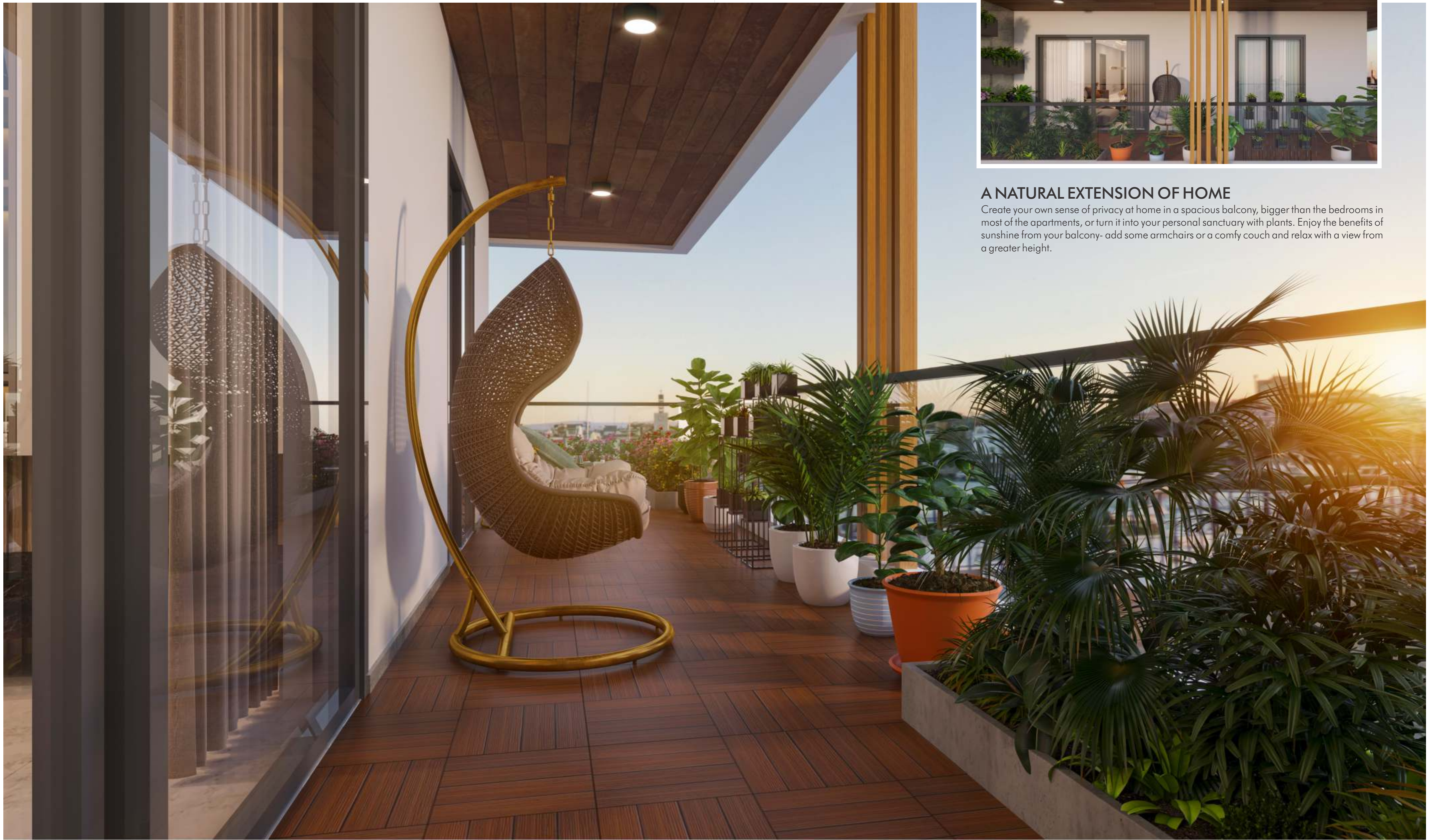


Kids Bedroom

### EVOLVE YOURSELF IN THE AURA OF LUXURY

Wake up to natural songs of birds and feel the freshness all around, everyday. Live a harmonious lifestyle surrounded by motivating ambience and evolve in your everyday living with spacious floor plans, perfect features.





**A NATURAL EXTENSION OF HOME**

Create your own sense of privacy at home in a spacious balcony, bigger than the bedrooms in most of the apartments, or turn it into your personal sanctuary with plants. Enjoy the benefits of sunshine from your balcony- add some armchairs or a comfy couch and relax with a view from a greater height.



GROUND FLOOR PLAN



-100'-OWIDE ROAD-

GROUND FLOOR UNIT PLANS



3 BHK-1695 Sft.



2 BHK-1240 Sft.



2.5 BHK-1470 Sft.



2 BHK-1260 Sft.



3 BHK-1695 Sft.



2 BHK-1260 Sft.



FIRST FLOOR PLAN



FIRST FLOOR UNIT PLANS



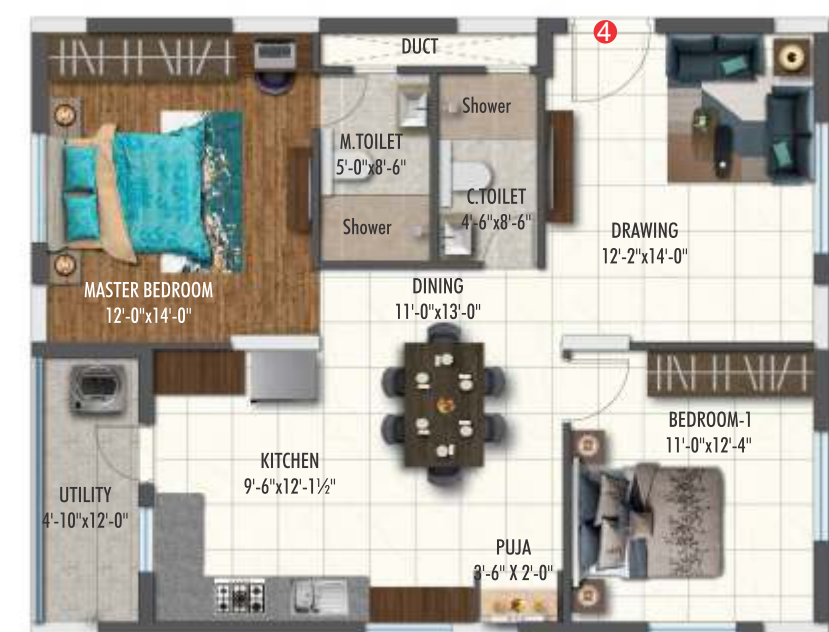
3 BHK-1695 Sq. Ft.



2.5 BHK-1470 Sq. Ft.



3 BHK-1695 Sq. Ft.



2 BHK-1240 Sq. Ft.



2.5 BHK-1550 Sq. Ft.

FIRST FLOOR UNIT PLANS



3 BHK-1685 Sq. Ft.



3 BHK-1685 Sq. Ft.



2.5 BHK-1445 Sq. Ft.



2 BHK-1260 Sq. Ft.



2 BHK-1260 Sq. Ft.



TYPICAL FLOOR PLAN

2<sup>nd</sup> to 8<sup>th</sup> Floor



TYPICAL FLOOR UNIT PLANS



3 BHK-2332 Sft.



2.5 BHK-1745 Sft.



3 BHK-2332 Sft.



2 BHK-1485 Sft.



2.5 BHK-1830 Sft.

TYPICAL FLOOR UNIT PLANS



3 BHK-2332 Sft.



2.5 BHK-1745 Sft.



3 BHK-2332 Sft.



2 BHK-1485 Sft.



2 BHK-1485 Sft.



## SPECIFICATIONS

### STRUCTURE

RCC framed structure with block masonry.

### FLOORING & DADO

Lift lobby– Granite flooring.

Drawing room, Living room, Dining room and Kitchen – 2.6 feet \* 5 feet GVT Tiles.

Master Bedroom – Wooden floor..

Other Bedrooms – 2 feet \* 4 feet GVT Tiles.

Utility – Tandur Stone.

Balconies – Anti skid superior quality vitrified tiles.

Master Toilet / Powder room/ Other Toilets – Vitrified tiles on floor and walls.

### TOILETS

Sanitary ware – Kohler or equivalent counter top wash basin and wall hung EWC with concealed flush tank.

Faucets – Kohler or equivalent in all toilets.

Counter – Granite counter in all toilets.

### DOORS AND WINDOWS

Main door – Engineered Solid Wood frame and Flush shutter with Veneer both sides – 8 feet height.

Internal doors – Solid wood frame and Flush shutter with Veneer – 8 feet height.

Door hardware – Yale or equivalent.

Windows & French doors – UPVC with toughened glass sliding and fixed shutters.

All sliding windows with mosquito mesh shutter.

Magnet/Concealed door stoppers for main door and all bedrooms.

### PAINT

External – Two coats of acrylic exterior emulsion paint with texture finish as per approved design.

Internal – Two coats of acrylic emulsion paint over smooth putty finish.

### AC

Provision for air conditioning drain outlet for living, drawing, and all bedrooms.

Designated space will be provided for outdoor units in every apartment.

### KITCHEN & UTILITY

Power plug for cooking range chimney, refrigerator, microwave ovens, kettle, air fryer, mixer / grinders in kitchen.

Granite counter for utility area with stainless steel sink.

Two feet vitrified tile dado above granite counter.

Power plug for Washing machine, dryer and dishwasher in utility area

### ELECTRICAL

Concealed copper wiring of Polycab or equivalent make.

Legrand modular switches or equivalent make.

### TELEPHONE & NETWORK

DTH provision in Master bedroom and living areas.

Intercom Provision.

Telephone points in living room..

Wired Internet provision in master bedroom, children's bedroom and drawing room.

Provision for video door phone.

Wi-Fi internet in clubhouse.

### LANDSCAPING & WATER BODIES

Landscaping and water bodies in the setback areas wherever feasible, and in Tot-lot areas as per design of landscape consultant.

### WATER SUPPLY & METERING

Pneumatic pumps will be used for supply of treated water to individual flats.

Individual water meters will be provided for each apartment.

### EXTERNAL LIGHTING

Light posts with lamp fittings in setback and landscaping areas and sufficient lights in staircase & corridor areas.

### COMPOUND WALL

Aesthetically designed compound wall shall be constructed all around the plot with solar fencing.

### LIFTS

High speed automatic Schindler (or equivalent) passenger elevators and one service elevator.

### WTP & STP

Fully treated water made available through exclusive water softening and purification plant in case of borewell water.

Sewage treatment plant of adequate capacity as per norms will be provided inside the project.

Treated sewage water will be used for landscaping purpose.

### CAR WASH FACILITY

Provision for car wash facility at basement parking area.

### GENERATOR

100% DG set backup with acoustic enclosure & AMF Panel for all flats and common areas.

### SECURITY

Sophisticated round the clock security system.

Panic button and intercom provided in the lift and connected to security room.

Surveillance cameras at the main security gate, entrance, passenger lifts and children's play area.

Boom barriers at entry for vehicles with mechanical operation.

### LPG

Provision for supply of gas from centralized gas bank to all kitchens with individual gas meters.

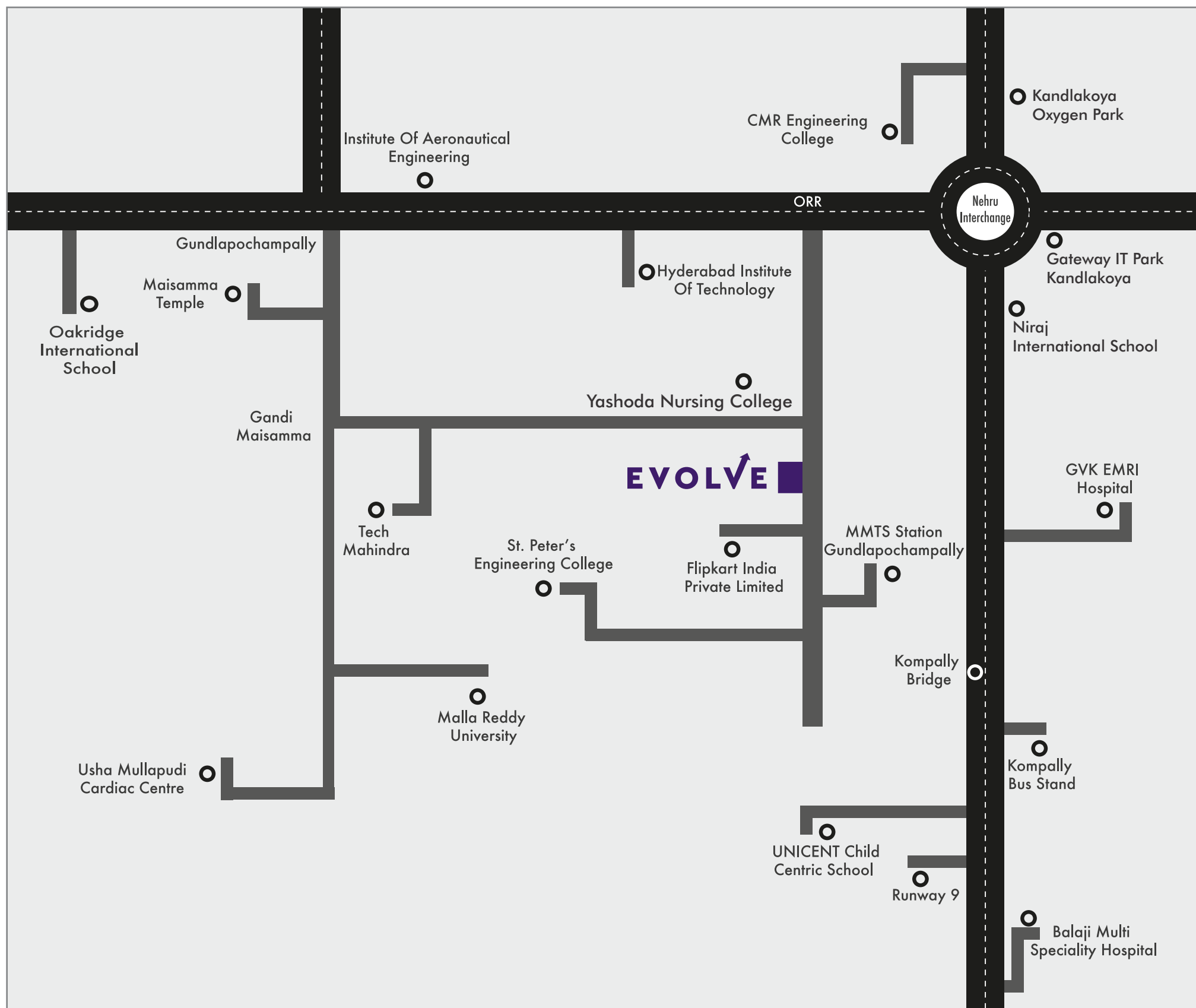
### BMS

Building management software for gas bank, generator power, general power connection and water meters.

### LITTLE EXTRAS:

- Modular Kitchen.
- Fresh Air System.
- Alkaline Drinking water.
- False Ceiling with Light Fixtures.
- Invisible Grills in Balconies.
- Central Vacuum System Ready Homes
- Video Door Phone





## THE RIGHT PLACE TO EVOLVE

Enjoy the benefits of a location that adds a natural touch to life yet connects you to the cosmopolitan city. You will thus be in close proximity to your workplace, entertainment, malls, cinemas and supermarkets.

### PROXIMITY

Flipkart India	< .5 Kms.
MMTS Gundlapochampally	< 1 Kms.
Yashoda Nursing College	< 2 Kms.
Outer Ring Road	< 3 Kms.
Malla Reddy University	< 3 Kms.
Tech Mahindra	< 4 Kms.
Hyderabad Institute of Technology	< 3 Kms.
CMR Engineering College	< 5 Kms.
UNICET Child Centric School	<5 kMS.
Neeraj Intl. School	< 5 Kms.



Flipkart India



Upcoming Gateway IT Park @ Kandlakoya



Tech Mahindra Campus



Malla Reddy University



Outer Ring Road



Hyderabad Inst. of Technology



UNICENT Child Centric School



Neeraj Intl. School



A FEW OF OUR COMPLETED PROJECTS

LUXURY VILLAS  
@ Gundlapochampally



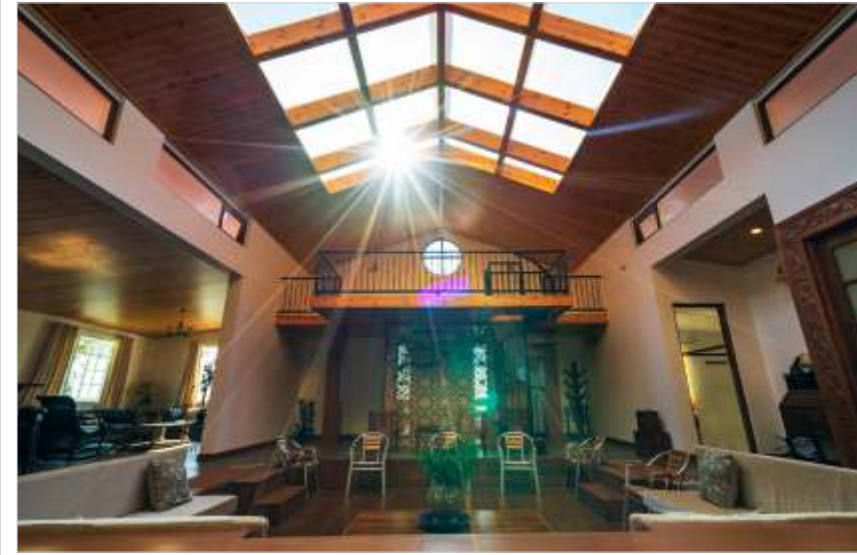
CLARENCE



A PASSION FOR  
QUALITY AND PERFECTION

E11 Homes is reputed for delivering residential projects of top-notch quality. Over the years, we have gained a special place in the heart of our customers by delivering maximum value with little extras that make every project a unique project. Being a proud owner of an E11 Homes, you can be assured to get vibrant, lively spaces of high aesthetic value.

Drive, determination and dedication to deliver value is what sets us apart from other developers. Backed by a reliable, consistent and committed team we have developed many landmark projects and Evolve is our new flag-ship project which is sure to set a new benchmark in Gundlapochampally.



CLOUDGATE



CEDAR



PROJECT CONSULTANTS

ARCHITECTS



STRUCTURAL



MEP



LANDSCAPING



NEW MEDIA



# 302, Sri Nilaya Enclave, Ameerpet, Hyderabad, Telangana - 500 073

[www.e11homes.com/evolve](http://www.e11homes.com/evolve)

TS RERA APPROVED

**P02200003943**