

HOMES BUILT FOR LIFETIME HAPPINESS



**1 & 2 BHK Homes @ Dhanori**

A PROJECT BY BELMONT GROUP









Imagination meets inspiration at Belmont Nexus, your new home that sets the standard in refined living.

Rising splendidly over the lush landscape of Dhanori, Belmont Nexus brings lovingly sculpted 1 & 2 BHK

Homes endowed with lavish internal features and exclusive amenities.

Backed by the trust and goodwill of the Belmont Group, Belmont Nexus truly epitomizes quality, commitment and best value for money.





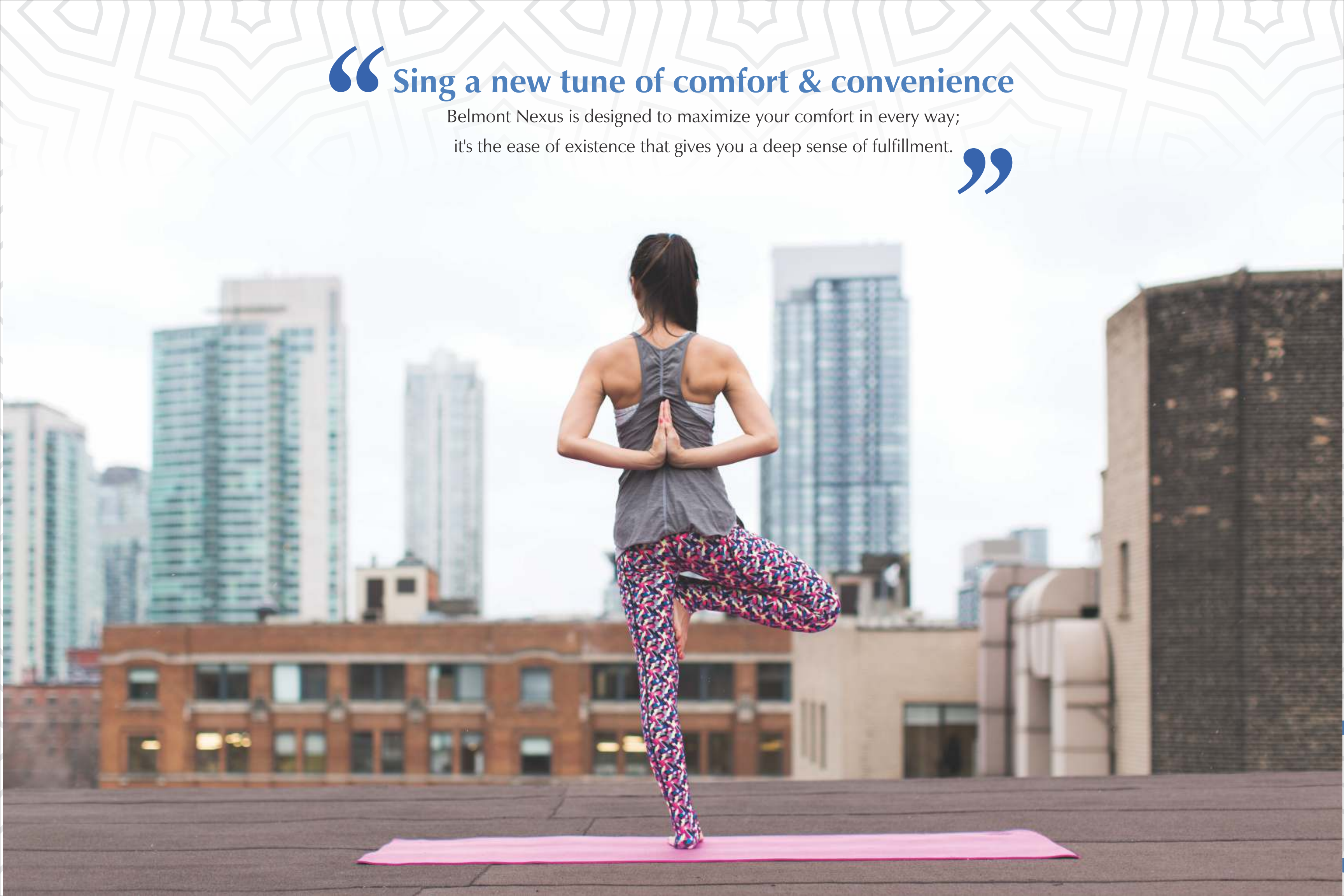




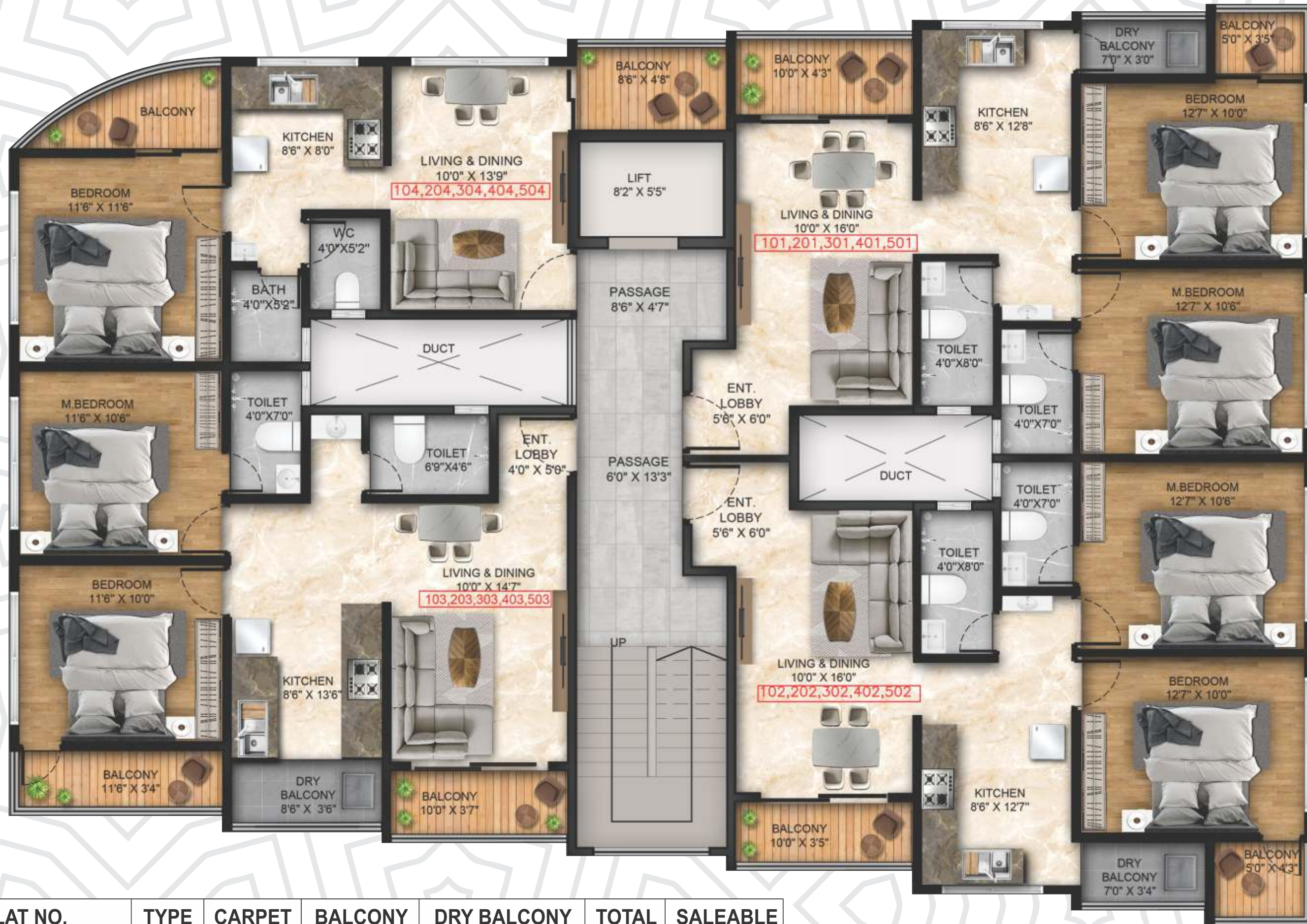
“ **Sing a new tune of comfort & convenience**

Belmont Nexus is designed to maximize your comfort in every way;  
it's the ease of existence that gives you a deep sense of fulfillment.

”







FLAT NO.	TYPE	CARPET	BALCONY	DRY BALCONY	TOTAL	SALEABLE
101,201,301,401,501	2BHK	665.00	59.00	22.00	746.00	1007.00
102,202,302,402,502	2BHK	663.00	55.00	24.00	742.00	1002.00
103,203,303,403,503	2BHK	637.00	72.00	30.00	739.00	998.00
104,204,304,404,504	1BHK	418.00	39.00	36.00	493.00	666.00

**TYPICAL 1ST, 2ND, 3RD,  
4TH & 5TH FLOOR PLAN**



### Senior Citizens' Sit-out

Relaxation and leisure for the elderly.

### Landscaping

Premium quality artificial landscaping; easy to maintain and avoids inconvenience like water stagnation and seepage.

### Open Yoga Space

Work out; stay fit & enjoy good health.

### Party Area

Life is much easier when you just chill out.

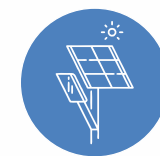
## Additional Features



Video Door Calling



Intercom Connectivity



Solar for common lights



Decorative Entrance lobby



Common area CCTV

## SPECIFICATIONS

### STRUCTURE

- Structure -earthquake resistance RCC framed structure.

### WALLS AND CEILING

- All external and internal wall in 6 inch thick brick.
- External wall finish with double coat sand face plaster.
- Internal wall and ceiling finish with smooth coating of gypsum or pop.

### FLOORING

- Designer standard luxury vitrified elegant flooring in entire homes.
- Wooden luxury vitrified elegant flooring in bedrooms.
- Anti skid tiles in toilets , balcony and terrace.

### KITCHEN

- Black granite kitchen platform with stainless steel sink.
- Glazed tiles dado up to 2 feet above kitchen platform.
- Provision of water pure purifier & dish washer.
- Provision for exhaust fan in kitchen & toilets .

### TOILETS

- Glazed tile up to lintel level.
- Concealed plumbing with Jaguar/ equivalent CP and sanitary fittings.
- Hot and cold mixing unit for shower area.

### DOOR & DOOR FRAME

- Elegant flush door shutter with laminate finish for main door & frame.
- Internal door laminated flush door & frame.
- Toilet door - Waterproof door & granite frame.

### WINDOWS

- Powder coated three track mosquito net aluminium sliding windows in all rooms.
- Four side granite window sill.
- MS grill for windows .

### ELECTRICAL

- Concealed wiring in polycab, wire modular switches Roma /equivalent.
- AC & TV point in all bedrooms.

### PLUMBING & SANITARY

- Use of low-flow plumbing fixtures for water use reduction, concealed plumbing with ISI mark (Jaguar / equivalent) standard chrome plated fittings.

### PAINTING

- Oil bound distemper (Low-VOC paints) with 2 coats in each flat.
- Weather coat (Apex / equivalent) paint for entire walls.



















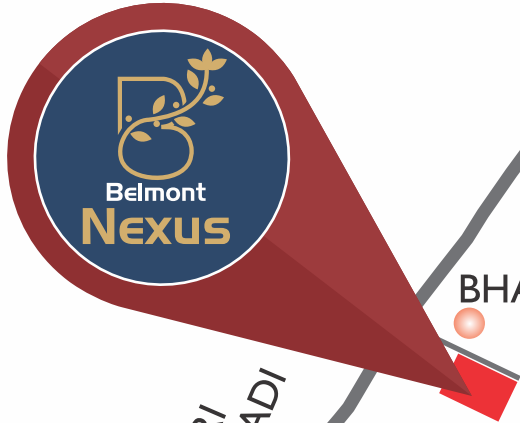








**Site :** Sr. No : 51, Plot No. 102,  
Maharana Pratap Chowk, Bhairavnagar,  
Dhanori Pune 411032







MAHARERA REGD. NO.  
**P52100049024**  
<https://maharera.mahaonline.gov.in>

**CREDAI**  
PUNE METRO



## Belmont Properties

201, A-Wing, Dream Max Building, Porwal Road,  
Near Aagtay Hotel, Dhanori, Pune : 411015

Website : [belmontgroup.in](http://belmontgroup.in) Email : [sales@belmontgroup.in](mailto:sales@belmontgroup.in)

☎ **7769005050**

NOTE : All the Plans, Layout ,Drawings, Amenities, Specifications, Facilities etc. are subject to approval of the respective authorities and may be subject to change at the sole discretion of the developers.