

# TEAM ARISTA

• LIAISONING ARCHITECTS

M/s B.S.Barot,  
Architects & Engineers



• DESIGN ARCHITECT



• STRUCTURAL DESIGN CONSULTANT



• FINANCIAL PARTNER



• MARKETING PARTNER



**PROJECT BY : SAHAJANAND DEVELOPERS**

**Site Add:** S.V. Road, Opp. Spectra Motors, Siddharth Nagar, Goregaon (West), Mumbai - 400 104.

**Corporate Off:** 1401, DLH Corporate Park, Opp. MTNL Telephone Exchange, S.V. Road, Goregaon (West), Mumbai : 400 104, India.

**T:** +91-22-28719800 **W:** www.sjnd.in

Disclosure: All specifications, images, plan, designs, amenities, dimensions, elevations, any other information captured herein are indicative in respect of the whole project: Athena, and is registered with MAHARERA for details please refer: <https://maharera.mahaonline.gov.in>. The project may be subject to revision/s and/or alteration/s in accordance with approvals, orders, and/or in compliance with laws/regulation in force from time to time. Unless otherwise stated all the images, visuals, materials and information contained herein are purely creative/artistic concepts and may not be actual representation of the product and/or any amenities. None of the above may be construed to form any basis of, and/or serve as an inducement for invitation for payment of any advance and/or deposit, to be made by a prospective customer under the relevant provisions of law or otherwise. The project is secured with Indiabulls Finance and no objection letter would be obtained at the relevant time, if required. Maharera Registration Number - P51800003375.

\*Conditions apply.

*Floor Plans*

ARISTA  
SKYSCRAPER

Maharera Registration Number - P51800003375

**WING C**

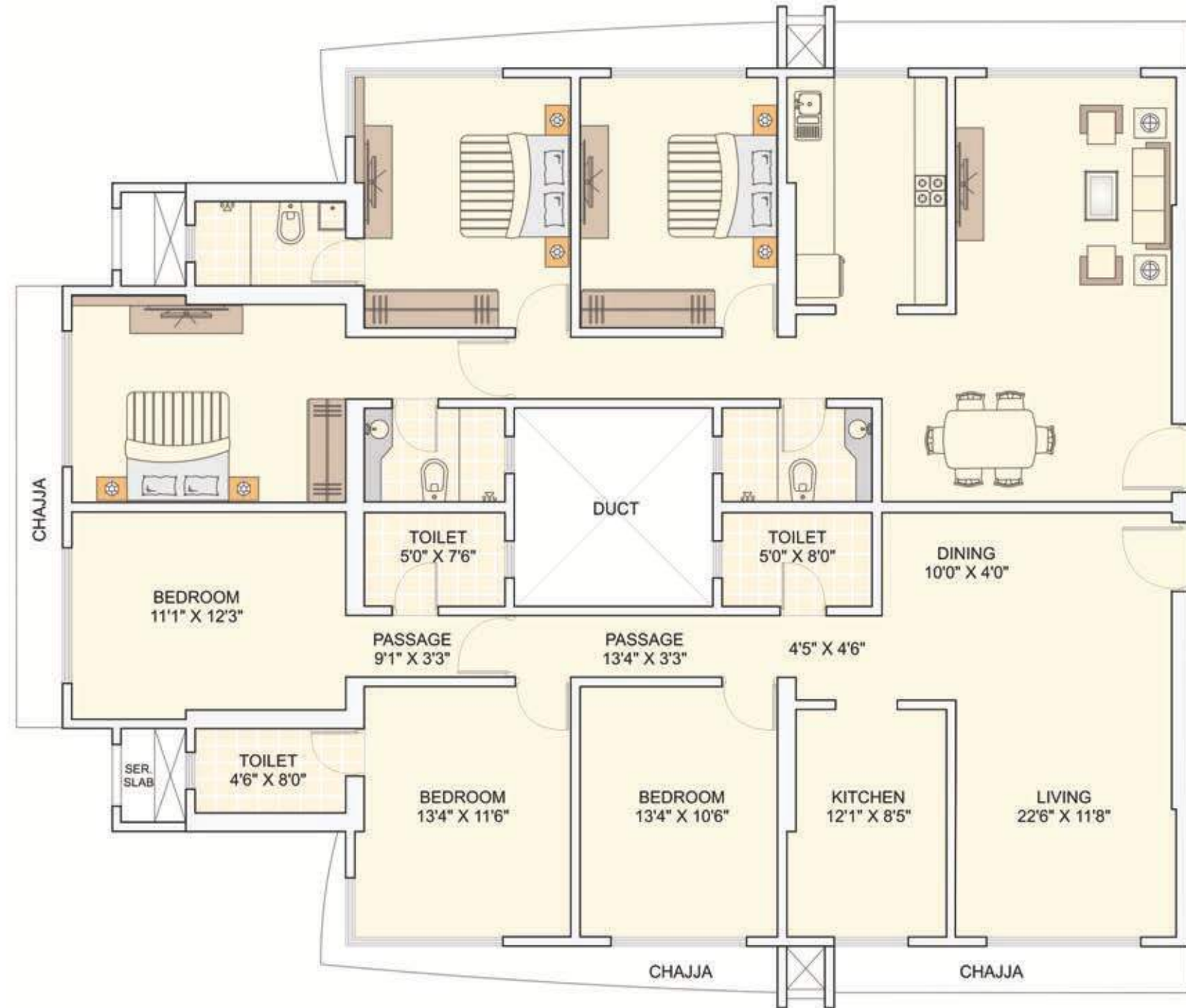
## Full Floor Plan



Flat No.	Configuration	Carpet Area
1	3 BHK	1128 Sq. Ft.
2	3 BHK	1128 Sq. Ft.
3	2 BHK	862 Sq. Ft.
4	2 BHK	820 Sq. Ft.
5	2 BHK	820 Sq. Ft.
6	3 BHK	1128 Sq. Ft.
7	3 BHK	1128 Sq. Ft.

WING C

Flat No.1, 2, 6 & 7 3 BHK





WING C

Flat No.3 2 BHK



WING C

Flat No. 4 & 5 2 BHK





## LAVISH LIFE IN A WORLD OF HAPPINESS

### Luxurious Internal Amenities

- Video door phones / Intercom
- Feather touch switches with dimmer
- Air conditioned apartments
- Italian marble flooring
- Modular kitchen with vitrified flooring
- Glass partition with rain shower

### Premium Recreational Amenities

- Swimming Pool & Kids Pool
- Clubhouse with gymnasium with state of art equipment
- Indoor gaming zone
- Energy efficient motion sensor Solar / LED lighting in landscaped garden & common area

### Lavish External Amenities

- Double height entrance lobby (Grand entrance lobby)
- High speed elevators
- Multi-level car parking space
- Rain water harvesting & Sewage Water Recycling Plant (SWRP)
- Power back up for fire elevator & key common areas
- Garbage Chute

### Superior Safety Features

- 24X7 Surveillance by CCTV covering designated common areas including children's play area
- Public address system
- Sprinkler system & mechanical ventilation to the basement

## LOCATION MAP

