



PARAMOUNT
GUIDED BY TOMORROW



PARAMOUNT
emotions



2,3 BHK HOMES • GH-05 (A), SEC-1, GREATER NOIDA WEST

PARAMOUNT emotions

2,3 BHK HOMES • GH-05 (A), SEC-1, GREATER NOIDA WEST

LAYOUT PLAN



LEGEND

AMENITIES

1. Club
2. Main Pool
3. Kid's Pool
4. Party Lawn
5. Children's Play Area
6. Badminton Court
7. Basket Ball Court
8. Podium Parking

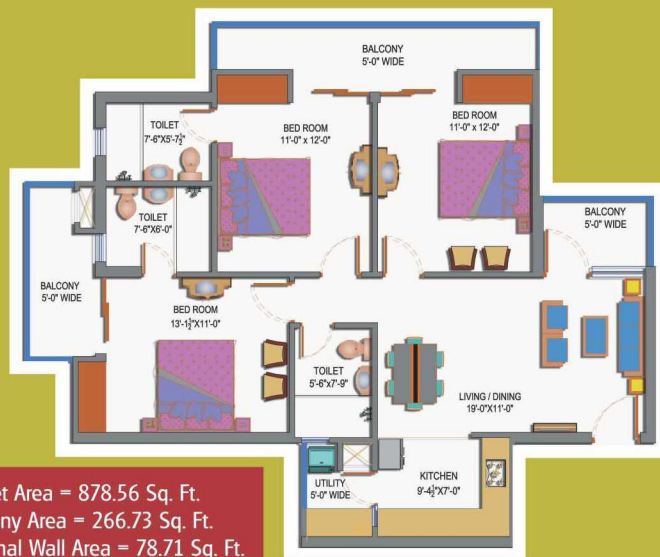
2 BED + 2 TOL + 2 BAL + UTILITY/STORAGE	(950 SQ.FT.)
2 BED + 2 TOL + 2 BAL + UTILITY/STORAGE	(1075 SQ.FT.)
3 BED + 2 TOL + 3 BAL + UTILITY/STORAGE	(1160 SQ.FT.)
3 BED + 2 TOL + 4 BAL + UTILITY/STORAGE	(1380 SQ.FT.)
3 BED + 3 TOL + 3 BAL + UTILITY/STORAGE	(1520 SQ.FT.)
3 BED + 4 TOL + DRESS + SER. + 4 BAL + UTILITY/STORAGE	(1710 SQ.FT.)
COMMERCIAL	
PARKING	

- ★ Luxurious Club
- ★ Theme Based Landscaping
- ★ Podium Parking
- ★ Grand Entrance Lobby



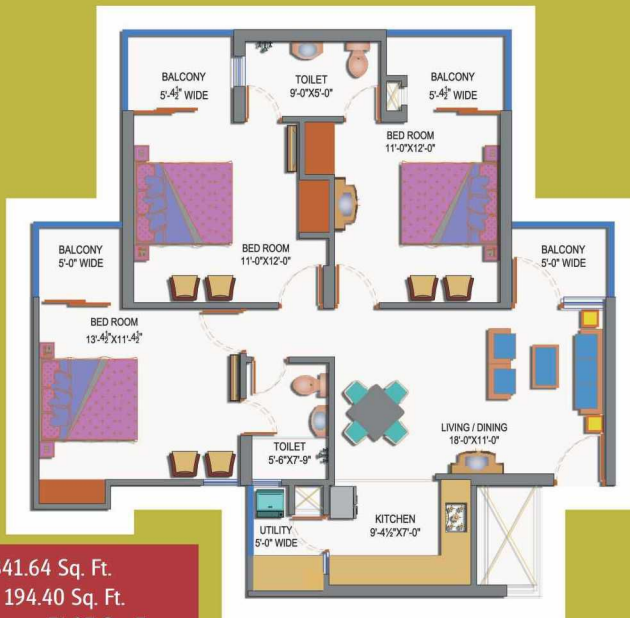
Carpet Area = 1026.02 Sq. Ft.
Balcony Area = 256.51 Sq. Ft.
External Wall Area = 98.47 Sq. Ft.
Total Area = 1710 Sq. Ft.

- 3 Bedrooms
- 4 Toilets
- 4 Balconies+Dress+Servant
- Utility/Storage



Carpet Area = 878.56 Sq. Ft.
Balcony Area = 266.73 Sq. Ft.
External Wall Area = 78.71 Sq. Ft.
Total Area = 1520 Sq. Ft.

- 3 Bedrooms
- 3 Toilets
- 3 Balconies
- Utility/Storage



Carpet Area = 841.64 Sq. Ft.
Balcony Area = 194.40 Sq. Ft.
External Wall Area = 74.97 Sq. Ft.
Total Area = 1380 Sq. Ft.

- 3 Bedrooms
- 2 Toilets
- 4 Balconies
- Utility/Storage

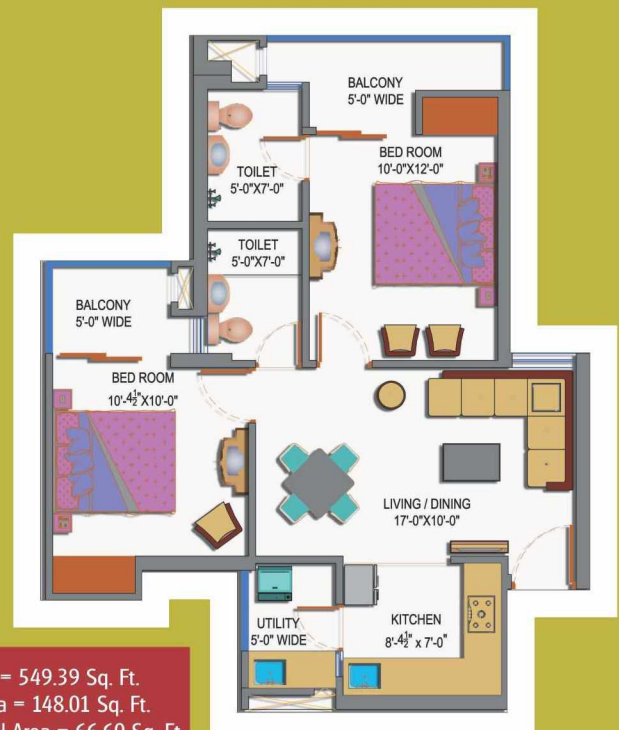
Carpet Area = 700.41 Sq. Ft.
Balcony Area = 150.05 Sq. Ft.
External Wall Area = 82.54 Sq. Ft.
Total Area = 1160 Sq. Ft.

- 3 Bedrooms
- 2 Toilets
- 3 Balconies
- Utility/Storage



Carpet Area = 640.03 Sq. Ft.
Balcony Area = 160.38 Sq. Ft.
External Wall Area = 66.59 Sq. Ft.
Total Area = 1075 Sq. Ft.

- 2 Bedrooms
- 2 Toilets
- 2 Balconies
- Utility/Storage



Carpet Area = 549.39 Sq. Ft.
Balcony Area = 148.01 Sq. Ft.
External Wall Area = 66.60 Sq. Ft.
Total Area = 950 Sq. Ft.

- 2 Bedrooms
- 2 Toilets
- 2 Balconies
- Utility/Storage

ROAD MAP



PARAMOUNT

GUIDED BY TOMORROW

PARAMOUNT GROUP OF COMPANIES

Corporate Office: H-123, Sector-63, Noida-201305 (U.P.) • Ph.: 0120-4613000 Fax: 0120-4274246

Site Address: Plot No. GH-05A, Sec-1, Greater Noida. U.P.

www.paramountgroup.co.in

(Toll free): 1800 103 9282
Mon to Sat, (Timing: 10am-5pm)

TOWNSHIPS • COMMERCIAL COMPLEXES • RESIDENTIAL COMPLEXES • VILLAS • IT PARKS • MALLS • HOTELS

All Specifications, designs, layout, conditions are only indicative not to scale & some of these can be changed at the discretion of Builder/Architect/Authority. These are purely conceptual and constitute no legal offerings. 1Sq. Mtr. = 10.764 Sq. Fts.