

# SIGNET

by omkar 

A project by ERA Realtors Pvt. Ltd. an Omkar Group Company.

***#NothingLikelt***



Artist impression

# SIGNET

by **omkar**

Welcome to a place where you get everything the way you want.

Signet is a well-appointed 1 & 2 Bedroom boutique residences located in Malad East. Situated next to the W.E.H and upcoming metro station, replete with modern amenities, convenient shopping & much more. Along with uninterrupted views\* of the magnificent city skyline, the Gorai Pagoda and the glorious sea line.

An array of international partners ensure a lifestyle beyond expectations. With which you are bound to say 'Nothing Like It'.

\*Presently from selected apartments

PROJECT LAYOUT



MAJESTIC 33 Storey Tower  
COMPREHENSIVE Infrastructure  
MASTER Planning & Design  
BEST OF Amenities as defined  
And we haven't begun describing the apartments yet!

\*For representation purpose only

# AT THE PLACE YOU WANT!

Signet is surrounded by excellent schools and colleges such as Oberoi international, Ryan international, Vibgyor High school, Yashodham High school, Whistling woods. With PVR, Movietime Multiplex, Fun City and amongst the largest malls in suburbs such as Oberoi Mall, Hub Mall, Inorbit and Hypercity

## #NothingLikelt





Artist impression

**DIRECT ACCESS FROM THE WESTERN EXPRESS HIGHWAY**

- 2 mins\* drive to entertainment and recreation hot spots
- 3 mins walk to the upcoming metro station
- 10 mins\* to surrounding business hubs
- 20 mins\* to the Domestic and International airport

\*Under normal traffic conditions (except peak hours)



- Ovaripada
- National Park
- Devipada
- Magathane
- Mahindra & Mahindra
- Bandongri
- **Pushpa Park**
- **Pathan Wadi**
- Aarey
- Mahanand
- JVLR Jn.
- Shankarwadi
- Andheri Metro (E)



In less than three years from now, the city will have its second metro route\*. Work on Mumbai Metro 7, connecting Dahisar East to Andheri East, has started on September 2016\*.

\*As per media reports

INTERIORS

OPULENT LOBBY



Artist impression



1 BHK - WELL-APPOINTED LIVING ROOM



2 BHK - WELL-DESIGNED LIVING ROOM



Artist impression

2 BHK - POWEDER ROOM



Artist impression

2 BHK - USER-FRIENDLY KITCHEN



Artist impression

2 BHK - MASTER BATHROOM



Artist impression

MESMERIZING VIEWS



Actual photo taken from 75 Mts.

\*Partial views from select apartments

AMENITIES

WHERE  
YOU GET THE

LIFESTYLE



YOU WANT!

\*The Pictorial/other representations herein including layout, facilities, amenities are merely creative imagination and an Architects impression. Actual product may differ from what is indicated herein. The photograph contained herein may be stock /standard photographs used for indicative purpose only to indicate the conceptual lifestyle. For detailed disclaimers please refer to disclaimer clause on the last page of the brochure, all of which will be deemed to be incorporated herein.

Artist impression



**FUN AREA FOR KIDS**



**CHILL BY THE POOL**



ACUPRESSURE THERAPY WALKWAY



CALLS FOR A CELEBRATION



DESIGNATED AREA FOR SENIOR CITIZEN'S



WELL EQUIPPED GYMNASIUM





FUN INDOORS



JOGGING TRACK



SHOPS RIGHT AROUND THE CORNER



\*Shop names and type depicted here are artistic impressions and are subject to change.

## APARTMENT SPECIFICATIONS

- Efficient Design with no wastage and maximum utilization of Floor plate area.
- Airconditioning in bedroom.
- All toilets & kitchen with Exhaust fan
- Full- Glazed Aluminium sliding windows in living room
- Anodised sliding windows for all other rooms.
- TV points in living and bedroom
- Intercom facility from apartment to reception desk.

---

FLOORING Imported Marble in Living Room  
Vitrified Tiles 2'0"X 2'0" in all rooms  
Antiskid Vitrified Tiles 2'0"X 2'0" in toilets flooring  
Designer ceramics tiles to toilet walls/ Dado

---

CP SANITARY FITTINGS Jaquar, Essco or equivalent

---

DOORS Both side Laminated flush Doors

---

ELECTRICAL Concealed Electrical Wiring & with branded modular switches (Panasonic/ Anchor ROMA) Or Equivalent

---

PAINT Plastic Emulsion Paint

---

KITCHEN Modular Kitchen with Granite Platform & S.S Sink

## OTHER BUILDING SPECIFICATIONS

- High-Speed Elevators - 2.5 mtrs. per second
- Well designed Main Entrance lobbies with Imported Marble flooring at Ground floor
- Vitrified Tiles in common Corridor lobbies
- OBD in all common passage and staircase area.
- High Quality external acrylic paint
- Aluminium shuttering construction technique.
- CCTV at entry & exit points and Main Entrance lobbies
- Adequate Multilevel parking facility
- Earthquake resistant structure.

WORKING WITH THE BEST

OUR  
**Part**NERS  
HAVE THE STATURE  
YOU'D WANT!

*#NothingLikelt*

**CALLISON|RTKL**  
A DESIGN CONSULTANCY OF ARCADIS

Master Layout  
(USA)



Design Consultant



Landscape  
(Singapore)



Structure



MEP



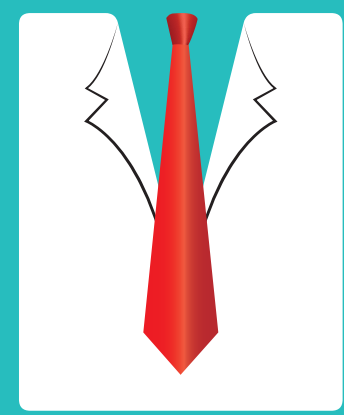
Fitness & Wellness

This project is financed by

**Indiabulls**  
HOUSING FINANCE

REPUTED DEVELOPER

FROM A  
**NAME**  
YOU WANT IT FROM!



*#NothingLikelt*

omkar 

Since its inception in 2003, Omkar Realtors & Developers has created opulent spaces that have epitomized the pinnacle of luxury. Omkar is managed by second generation entrepreneurs who have carved a niche for themselves in the world of real estate. The management combines a seasoned team of professionals with expertise in real estate, infrastructure, steel manufacturing, oil exploration, shipping, and construction.

## BRIEF FACTS ABOUT OMKAR REALTORS & DEVELOPERS AND ITS OTHER FLAGSHIP PROJECTS

Over **13** projects delivered across Mumbai

Over **20** Mn. Sq. Ft. Under Development

Additional **60** Mn. Sq. Ft. Upcoming Projects



Our footprint from Worli to Malad

### Flagship Projects of Omkar



Omkar 1973 Worli



Omkar Alta Monte, Malad



Crescent Bay, Parel

### Dream Team

- Lead by second generation entrepreneurs
- A strong legacy of over 5 decades
- A pool of talented Professionals from leading Business Schools
- 10000+ workers engaged across projects

### Industry Leaders

- **Times Realty Icons Awards 2016**  
Best Super Luxury Residential Development - Omkar 1973
- **Construction Times Builders Award 2015**  
Best upcoming Residential Project 2015 - Alta Monte
- **SKOCH Renaissance Gold Award**  
Redevelopment Project of the Year
- **Realty Plus Excellence Awards 2014**  
Developer of the Year - Residential

### Working with the Best

#### DESIGN



#### ESPA



#### MEDIA



#### FINANCE



# SIGNET

by omkar 

A project by ERA Realtors Pvt. Ltd. an Omkar Group Company.

Project registered with MahaRERA. Registration No. P51800010463

This project is financed by Indiabulls Housing Finance Limited

---

**Site:** Signet by Omkar, On Western Express Highway, Malad (E), Mumbai

---

**Head office:** Omkar Realtors & Developers Pvt. Ltd., Omkar House, Off Eastern Express Highway, Sion (E), Mumbai

---

**Disclaimer:** All the plans, designs, images, specifications, dimensions, facilities and other details herein are purely indicative in nature and the intended recipient should note that these are to be treated as purely provisional and informative and as such only tentative subject to the approval from respective Authorities. We reserve the right to modify / change / amend / alter any of the aforesaid in the best interest of the development without prior intimation / notice and without any obligation. The contents herein should not be construed as an offer / invitation to offer / contract. Any party desirous / interested in the project need to enter in to Agreement for Sale and its development/transaction shall be governed by the terms and conditions of the Agreement for Sale. This printed material inter alia images, contents therein is for representative purpose only. For internal circulation purpose only. Government Fees & Taxes are Extra (As Applicable), Stamp Duty, Service Tax, VAT & Registration Charges as applicable, Other Charges Payable at the time of Possession, Conditions apply.