



Elegance That Stays Forever!

2&3 BHK Lifestyle Apartments



RAMKY ONE
KRYSTAL

YOUR SHINING ABODE

SHEELANAGAR, VISAKHAPATNAM

RAMKY ESTATES & FARMS LIMITED

Hyderabad | Bengaluru | Chennai | Visakhapatnam | Warangal

ISO 9001:2015 Certified | sales.krystal@ramky.com

Member
CREDAI

FACT SHEET

Ramky Jawaharlal Nehru Pharma City (India) Limited, Visakhapatnam, India: First of its kind pharmaceutical SEZ spreading across 2500 acres of land, fully integrated and developed for production and manufacturing facilities with operations and maintenance of these facilities since 2008. This project provides hassle free environment for Bulk Drug, Chemicals and Allied Manufacturing facilities at Parawada, Visakhapatnam, AP.

Ramky One Krystal enables you to live a life that's a cut above. Located at **Sheela Nagar**; the city's upcoming luxury locality, it's an address that will leave you impressed from the moment you walk-in.

Contemporary design greets the eye with a striking facade, and equally well planned lobbies and corridors. Each block comes with its own swanky entrance lounge, and the complex ensures a unique, pedestrian friendly podium in a space that comes alive through little details.

The apartments are no less, and have been created to cater to every whim of a modern lifestyle, and are masterfully crafted to give your life an air of exclusivity.

Total Land Area	6.109 Acres
Total Units	459
Total saleable Area	6.32 Lakh Sq.ft
Total Blocks	7
No. of Floors	1B+G+5 Floors
Club House	38300 Sq.ft
Unit Sizes	3 BHK : 1600 Sq.ft & 1495 Sq.ft 2 BHK : 1165 Sq.ft



UNIQUE SELLING POINTS

- Pedestrian Friendly Podium Gated Community with car parking's limited to basements levels
- Smartly designed 3-side open flats, Vastu compliant
- Spacious 2 & 3 BHK Apartments
- World Class amenities like fully loaded clubhouse, Swimming pool & Land scaped gardens
- Indoor & Outdoor games, Garden, jogging track & much more
- 24*7 High security Complex- CCTV surveillance
- Well connected to National highway and Airport

Krystal Club House



LOCATION ADVANTAGES

- Ramky One Krystal is situated at Sheelanagar, Vishakhapatnam. The location is between NAD junction and Gajuwaka . Very close to Airport
- Situated very close to NH5
- In close proximity to **PSUs like ONGC,HPCL,VSP, BHEL, Port etc.**
- Direct Connectivity to nearly all the major points in and around Vizag.
- Minutes drive from Airport, Gajuwaka Minutes drive from many reputed Schools, Hospitals, Recreational areas and Public Gardens.
- Well connected with different modes of Transportation
- Well Planned Gated Community situated in fast growing Vizag industrial corridor



SPECIFICATIONS

Structure	R.C.C. framed structure to withstand Wind & Seismic Loads.
Super Structure	CC Block masonry/ RCC Internal & External Walls
Entrance Lobby	Well planned lobbies and corridors
Doors/Windows & Ventilators	MAIN DOOR : Hardwood/Engineered Wood frame & veneer finished shutter with polish & fitted with dorset/godrej/Hafele/equivalent make hardware.
	INTERNAL DOORS : Hardwood/ Engineered wood frame & laminated/ Painted shutter fitted with dorset/godrej/Hafele/equivalent make hardware.
	FRENCH DOORS : UPVC sliding doors of NCL/Fenetre/Frame craft/Ambiance/magnus/Equivalent make
	WINDOWS : UPVC windows of NCL/Fenetre/Frame craft/Ambiance/magnus/Equivalent
Painting	Internal : Smooth finish with two coats of premium acrylic emulsion paint of Asian/Berger or Equivalent, over a coat of primer.
	External : Combination of texture and exterior emulsion paint of Asian/Berger or Equivalent.
Flooring & Dadoing	2'X2' Vitrified Tiles of RAK/Nitco/Varmora/Equivalent make for Bedrooms, Dining & Drawing Rooms, Kitchen.
	Anti skid Ceramic Tiles (1'X1') in Toilets of RAK/Nitco/Varmora/Kajaria/Equivalent
	Ceramic Tile Dado upto 7 Feet Height in all toilets RAK/Nitco/Varmora/Equivalent make
	Kitchen counter : Granite Platform with 2 Feet Height Ceramic Tile dado (RAK/Nitco/Varmora/Kajaria/Equivalent) and Sink with drain board (Nirali/Cera/Franke/Equivalent)
	Balconies : 1'x1' Anti-skid ceramic tiles (RAK/Nitco/Varmora/Kajaria/Equivalent)
Utility Area : Ceramic tile dado upto 3' height of RAK/NITCO/QUTONE/Equivalent make.	
Bathrooms	Wash basins of CERA/Kohler/Hindware/Parryware/Equivalent make
	Wall mounted EWC of CERA/Kohler/Hindware/Parryware/Equivalent make
	Provision for Geysers, light point and exhaust fan points in all Bathrooms.
Electrical	Power outlets for Air Conditioners in Living/Drawing and Bedrooms.
	Power plug for cooking range chimney, refrigerator, microwave ovens, mixer/grinders, Washing machine in Utility Area
	Fan, Light & 5 amps sockets in all rooms 2 no.s of 5 amps, provision for cable point in living area, Master and 2nd Bedroom
	3 phase supply for each unit and individual Prepaid Energy meters All electrical items of Legrand/Crabtree/Anchor/Panasonic/MK/Honeywell Equivalent
Telecom	Telephone/Intercom Point in each Flat
Internet	Provision for internet connection in each Flat
Lifts	Lifts of Johnson/Kone/Otis/Equivalent
STP	Sewage Treatment Plant - Recycled water shall be used for flushing and landscaping works
WTP	Water treatment plant
Water Supply	Hydropneumatic & Gravity supply with water meters for each unit.
Car Wash Facility	Provision for Car Wash facility
Generator	100 % Power backup for common areas & 500W for each unit
Security / BMS	Solar fencing over the boundary Wall
	Surveillance cameras at the Main Security Entry/Exit Points

AMENITIES

Entrance Lounge for each block

Landscaped gardens

Party Lawns

Pedestrian Friendly Podium

Senior Citizen lawn

Fully loaded Club House

Air-conditioned Gymnasium

Guest Rooms

Aerobics & Meditation room / Yoga room

Swimming Pool with toddler's pool

Indoor Games Room

Banquet Hall

Provision for spa/saloon

Provision for Convenience Store

Provision for Creche

Provision for ATM

Provision for Library

Provision for Association Office

Amphitheatre

Tennis Court

Children's Play area with play equipment

Provision for Health Lounge/Pharmacy

Provision for Cafeteria

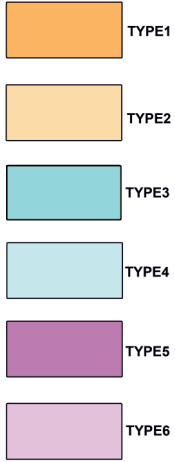
Indoor Badminton Court





MASTER PLAN

Master Plan



PHASE-II
FUTURE EXPANSION

CLUB HOUSE

	No. of Bed Rooms	Facing	Carpet Area	Balcony	Utility	Saleable Area
	EF - 3 BHK	East	1075	66	42	
	WF - 3 BHK	West	1075	66	42	
	EF - 3 BHK	East	996	62	46	
	WF - 3 BHK	West	998	62	42	
	EF - 2 BHK	East	767	52	34	
	WF - 2 BHK	West	767	52	34	

Project Amenities & Features

- Grand Entrance Plaza with Security Cabins
- Entrance Lobby for Each Block
- Landscaped Gardens
- Amphitheatre
- Tennis Court
- Skating Rink
- Basketball Court
- Cricket Practice Nets
- Pedestrian Friendly Podium
- Senior Citizen Lawn
- Kids Zone with Sand Pit & Play Equipment

- Jogging Track
- Service Yard
- Sewage Treatment Plant
- Water Treatment Plant
- Rain Water Harvesting Pits
- Common Toilets For Maids / Drivers

Club House Features

- Reception with Waiting Lounge
- Swimming Pool with Toddler's Pool
- Multipurpose Hall
- Air-conditioned Gym
- Aerobics & Meditation Room / Yoga Room
- Business Lounge

- Indoor Games Room
- Indoor Badminton Court
- Guest Rooms
- Provision for Cafeteria
- Provision for Convenience Store
- Provision for ATM
- Provision for Health Lounge / Pharmacy
- Provision for Association Office
- Provision for Spa / Salon
- Provision for Crèche
- Provision for Library



AREA STATEMENT

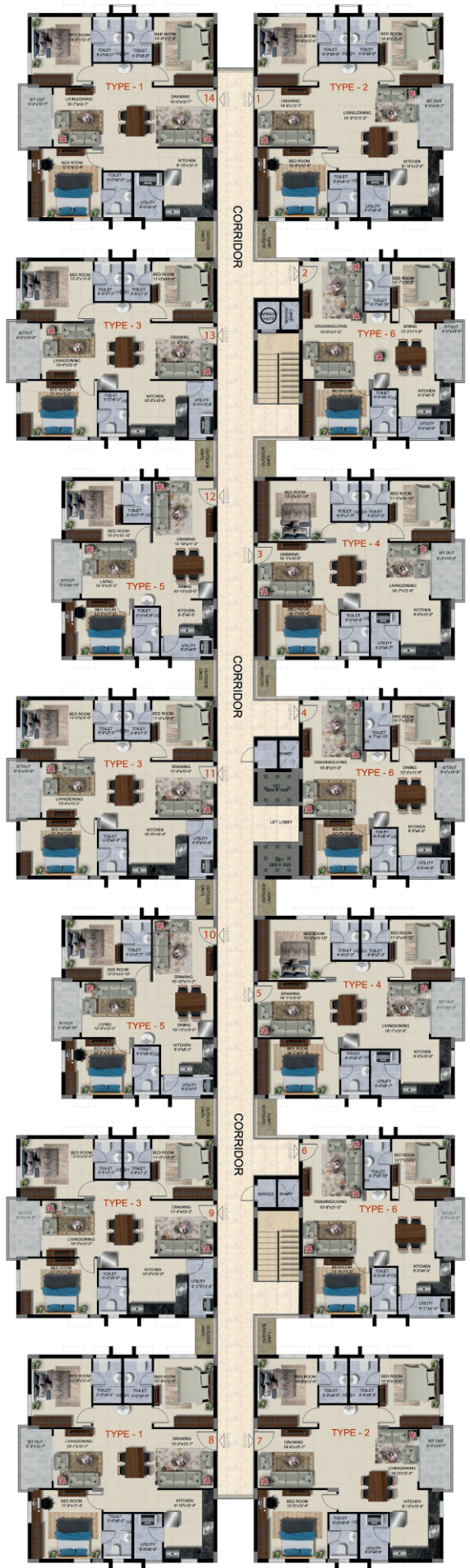
	No. of Bed Rooms	Facing	Carpet Area	Balcony	Utility	Saleable Area
	EF - 3 BHK	East	1075	66	42	
	WF - 3 BHK	West	1075	66	42	
	EF - 3 BHK	East	996	62	46	
	WF - 3 BHK	West	998	62	42	
	EF - 2 BHK	East	767	52	34	
	WF - 2 BHK	West	767	52	34	





TOWER:1





TOWER:2&3 



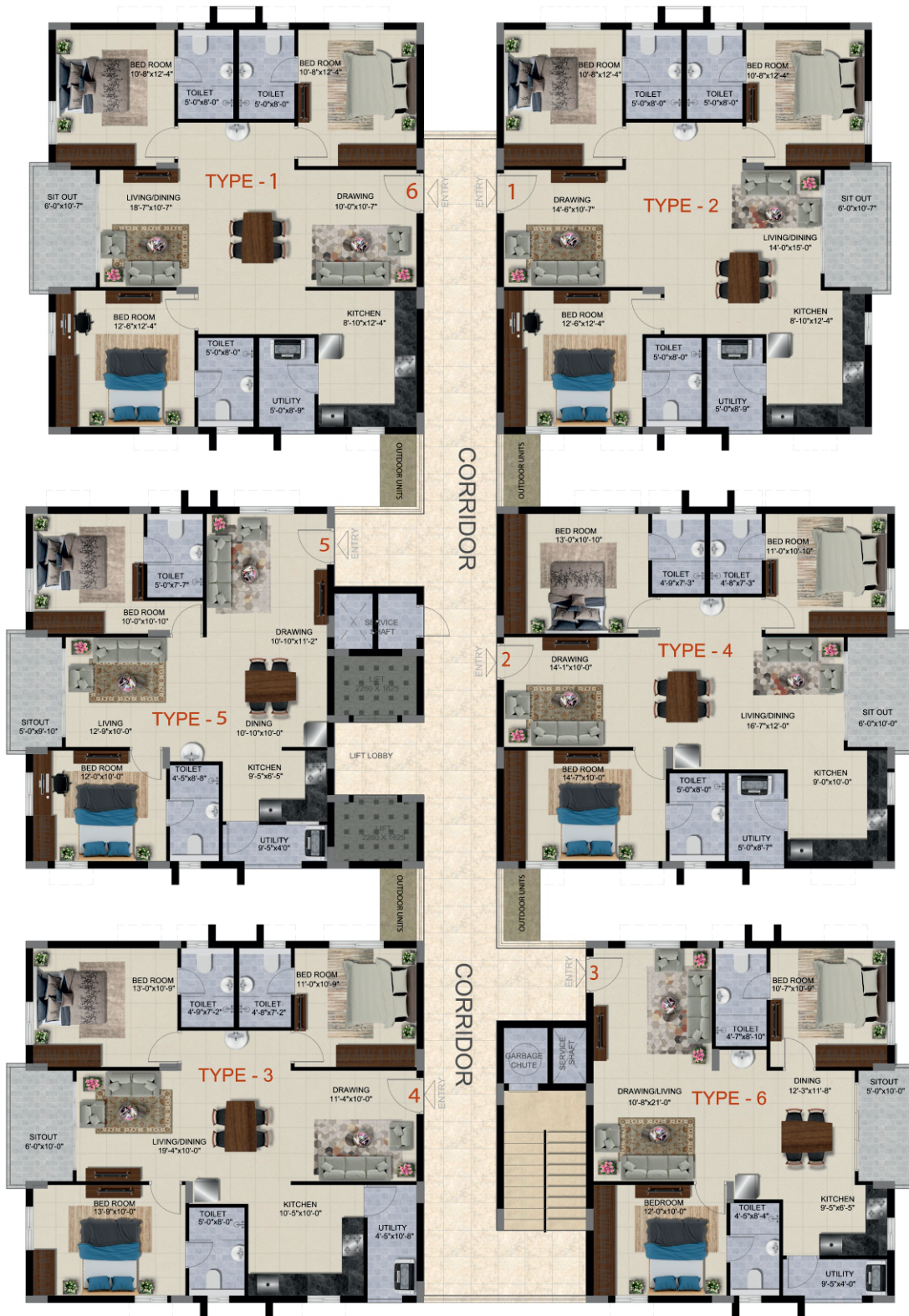
TOWER:4





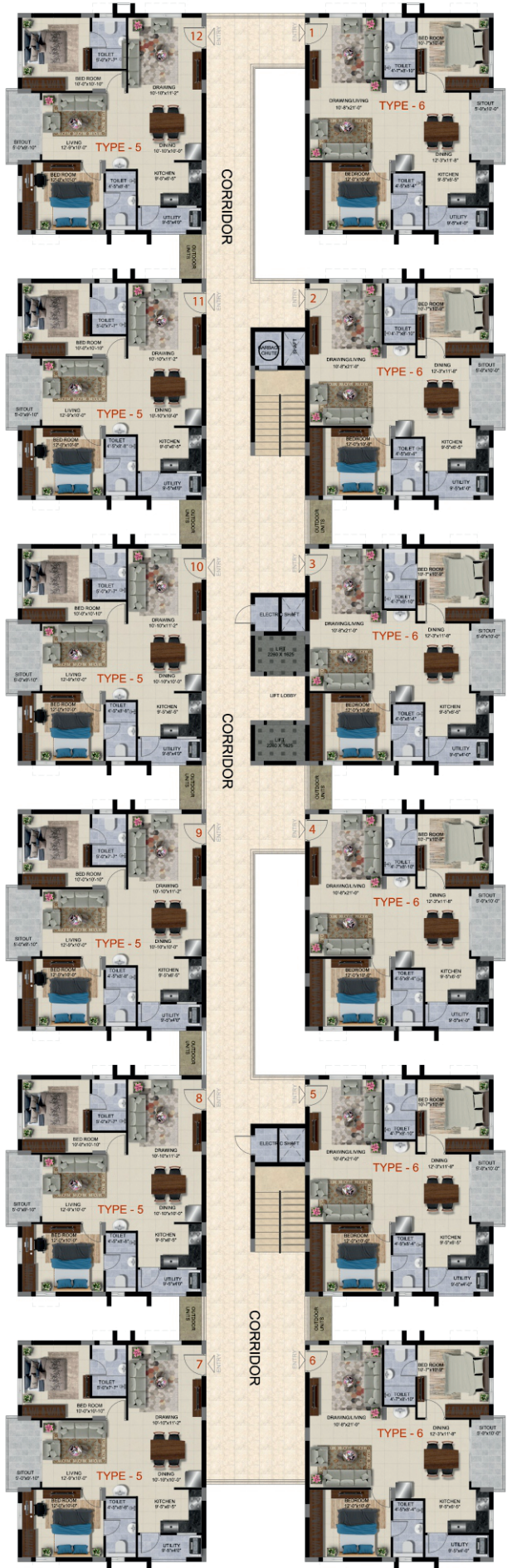
CORRIDOR

TOWER:5 



TOWER:6





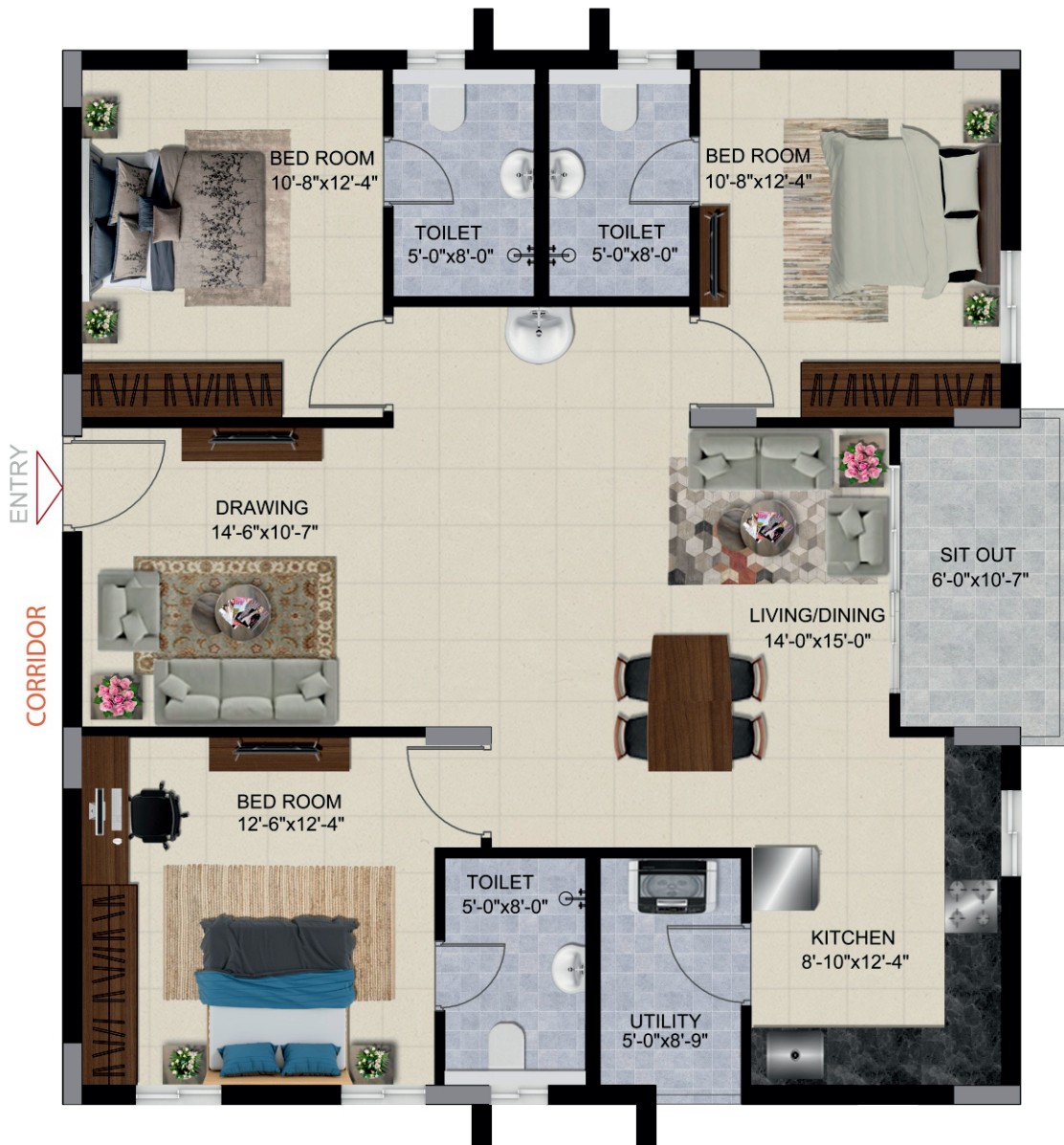
TOWER:7





TYPE-1 | 3BHK | 1600 SQ.FT | EAST FACE





TYPE-2 | 3BHK | 1600 SQ.FT | WEST FACING





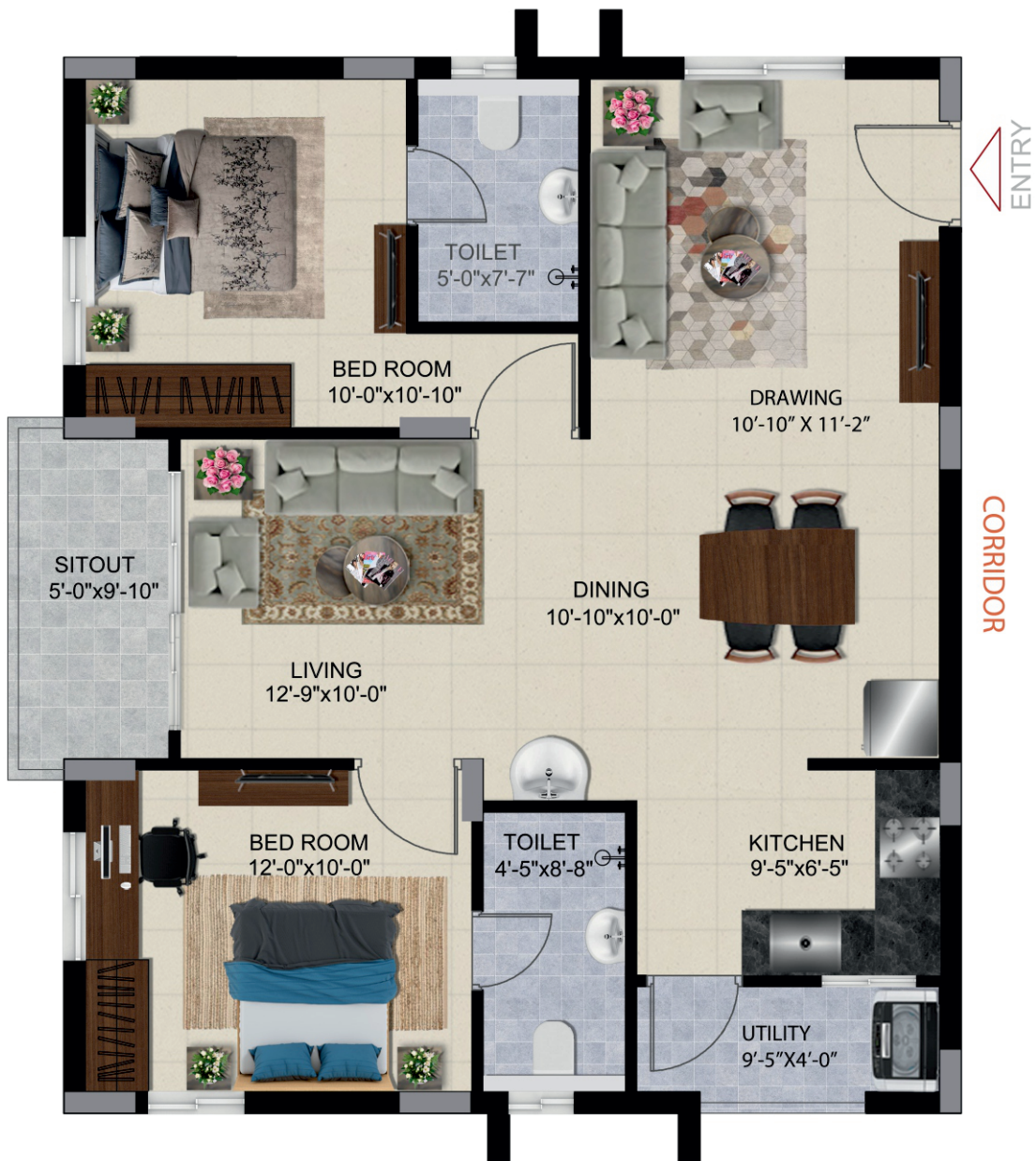
TYPE-3 | 3 BHK | 1495 SQ.FT | EAST FACING





TYPE-4 | 3 BHK | 1495 SQ.FT | WEST FACING





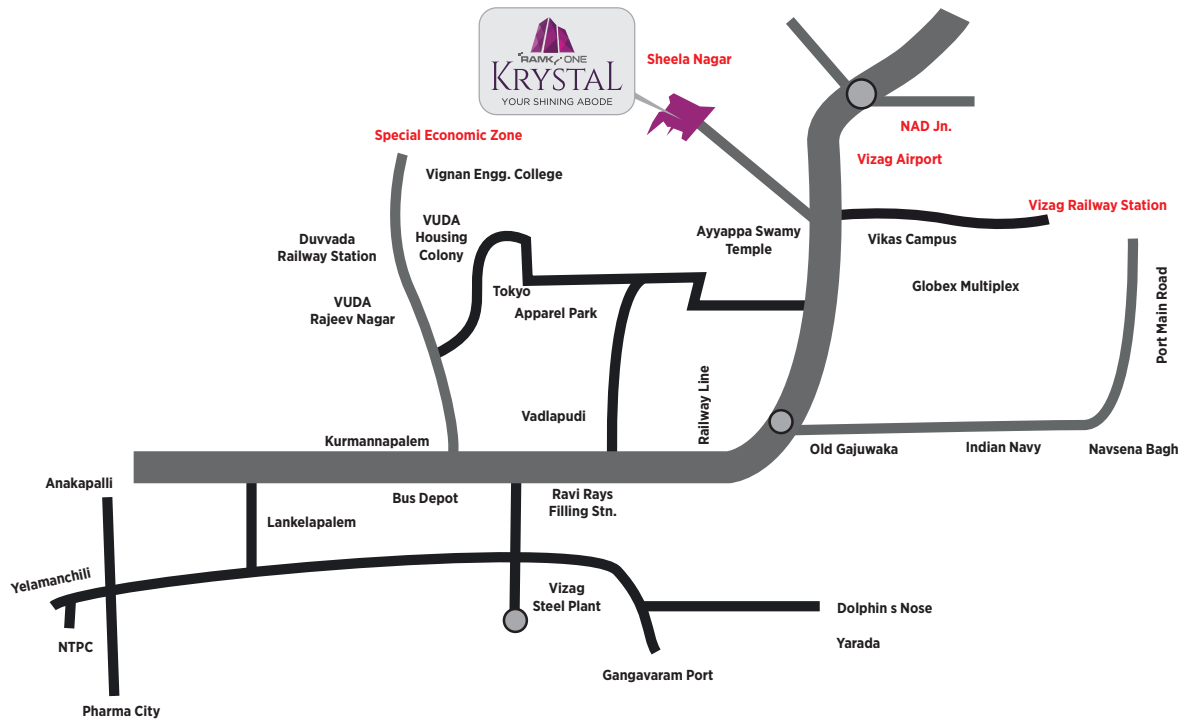
TYPE-5 | 2 BHK | 1165 SQ.FT | EAST FACING 



TYPE-6 | 2 BHK | 1165 SQ.FT | WEST FACING



LOCATION MAP



Not to scale

For details contact:



90000 19971

sales.krystal@ramky.com

RAMKY ESTATES & FARMS LIMITED

Hyderabad | Bengaluru | Chennai | Visakhapatnam | Warangal

ISO 9001:2015 Certified | www.ramkyonekrystal.com

