



atmosphere  2  
RESIDENCES

**GMLR, MULUND (W)**



MUMBAI COMES HOME



TO MULUND

Today, the megapolis of Mumbai is exploding as it is the centre of business, art and media. With an exponential growth in the city, constantly striving for space. Mulund known as the prince of the suburbs, serves as the perfect solution.

Nestled among hills and greenery, it provides the serenity of nature, with the perks of city life; the comfort of privacy and the ease of connectivity. The lifestyle you dream of, without making any compromises.

HERE,  
YOU TRULY ARE  
THE CENTRE OF  
YOUR UNIVERSE

## LOCATION MAP



\*approximate distances from google maps



### Connectivity

- Atmosphere O2 is located right at the start of Goregaon - Mulund Link Road, on the Mulund side which connects it seamlessly to the Western Suburbs
- Nahur Railway Station is approx. 350 metres and Mulund Railway Station is approx. 2 kms
- LBS Marg is just 1.1 km away and seamlessly connects to the Eastern Suburbs
- The upcoming Metro Station is just 1.1 kms away which will connect Wadala and Thane
- Eastern Express Highway which is just 1.4 km away, enables seamless connectivity to Powai, BKC and Thane



### Entertainment

D-Mart & R-Mall are in extremely close proximity. The boulevard right across the street houses some of the best cafes and restaurants



### Educational Institutes

There are several reputed schooling options in the vicinity. Some of them are Bright School, St. Mary's School and St. Pius High School



### Hospitals

There are various medical help options around. Amongst the well-known ones there is Fortis Hospital and Sanjeevani Hospital



### Zone for Ultimate Bliss

Shree Markandeshwar Mahadev Mandir, Sarvodaya Nagar Jain Derasar, Radhakrishna Mandir and Shivshakti Mahadev Mandir within 10 mins walk

## A PROVEN LEGACY

Atmosphere stands tall as a testament to our legacy of excellence, innovation and commitment.

This visionary project is now home to 680+ families who trust us and are a part of one big happy family. It is a place where lifestyle and conveniences converge.

We are now set to add another glittering chapter to this legacy with Atmosphere O2.



# HERE'S A LIFE THAT TRULY CHECKS ALL THE BOXES

After delivering the most iconic landmark of Mulund - Atmosphere in record time, The Wadhwa Group in association with Man Infra and The Chandak Group, is all set to launch their second landmark project in the buzzing suburb of Mulund.

The upcoming iconic landmark Atmosphere O2 is aimed at offering the 'best of both worlds' with meticulous planning, unmatched lifestyle amenities, ample spaces and seamless connectivity with all necessary conveniences in the vicinity.

atmosphere  2  
RESIDENCES

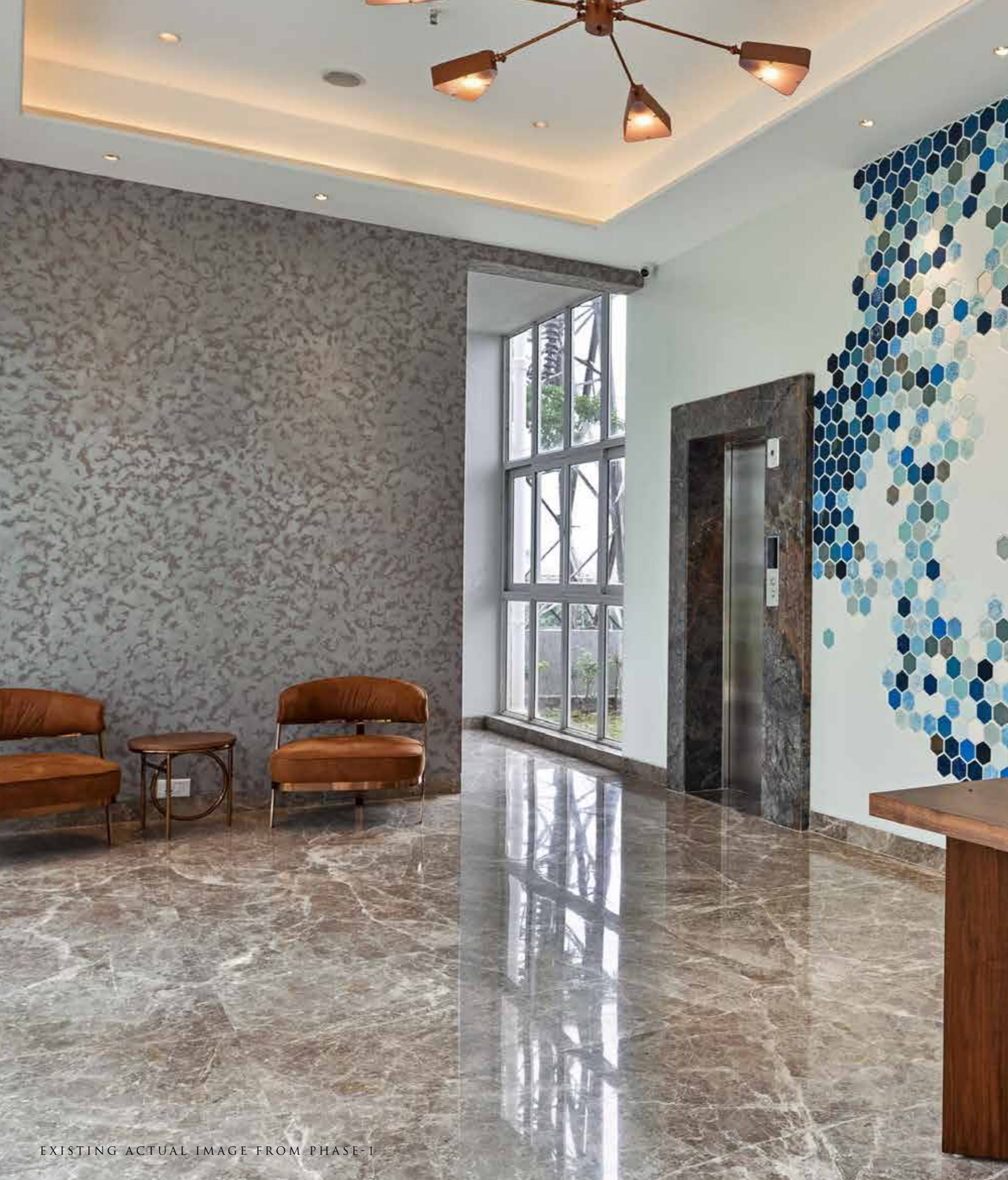
GMLR, MULUND (W)



## FORM-LINERS ON FAÇADE

What makes Atmosphere O2 unique is its stunning façade cast in concrete, unlike most of the conventional buildings which have an external cladding. The external cladding needs high maintenance whereas these concrete form liners have several advantages such as enhanced aesthetics, high durability, low maintenance and are fire resistant.





## A GRAND WELCOME INTO A BRAND NEW LIFE

When you step into Atmosphere O2, you step into a world that has been created with the utmost care, craft and precision; a home that ensures you a warm welcome.

The grand lobby has a welcoming charm, ample space and 8 elevators at your service, you will never have to wait long enough, but you might just want to.

# A LIFE OF LIMITLESS LEISURE

There's a space for the young ones to flourish in. There's a place for the elderly to find peace in. There's something for the active souls and something for those who seek a new experience. At Atmosphere O2, you will find leisure at every step of your way.



Club with Gym and Spa Room



Swimming Pool with Jacuzzi



Meditation Zone



Multipurpose Court



Kids' Activity Zone



Multipurpose Hall with Kitchen



Mini-theatre



Indoor Games Room



Squash Court



Landscaped Garden



Amphitheatre



Jogging Track



Open-Air Lawn



Outdoor Children's Play Area



Senior Citizen's Area with Reflexology Path



Yoga Lawn



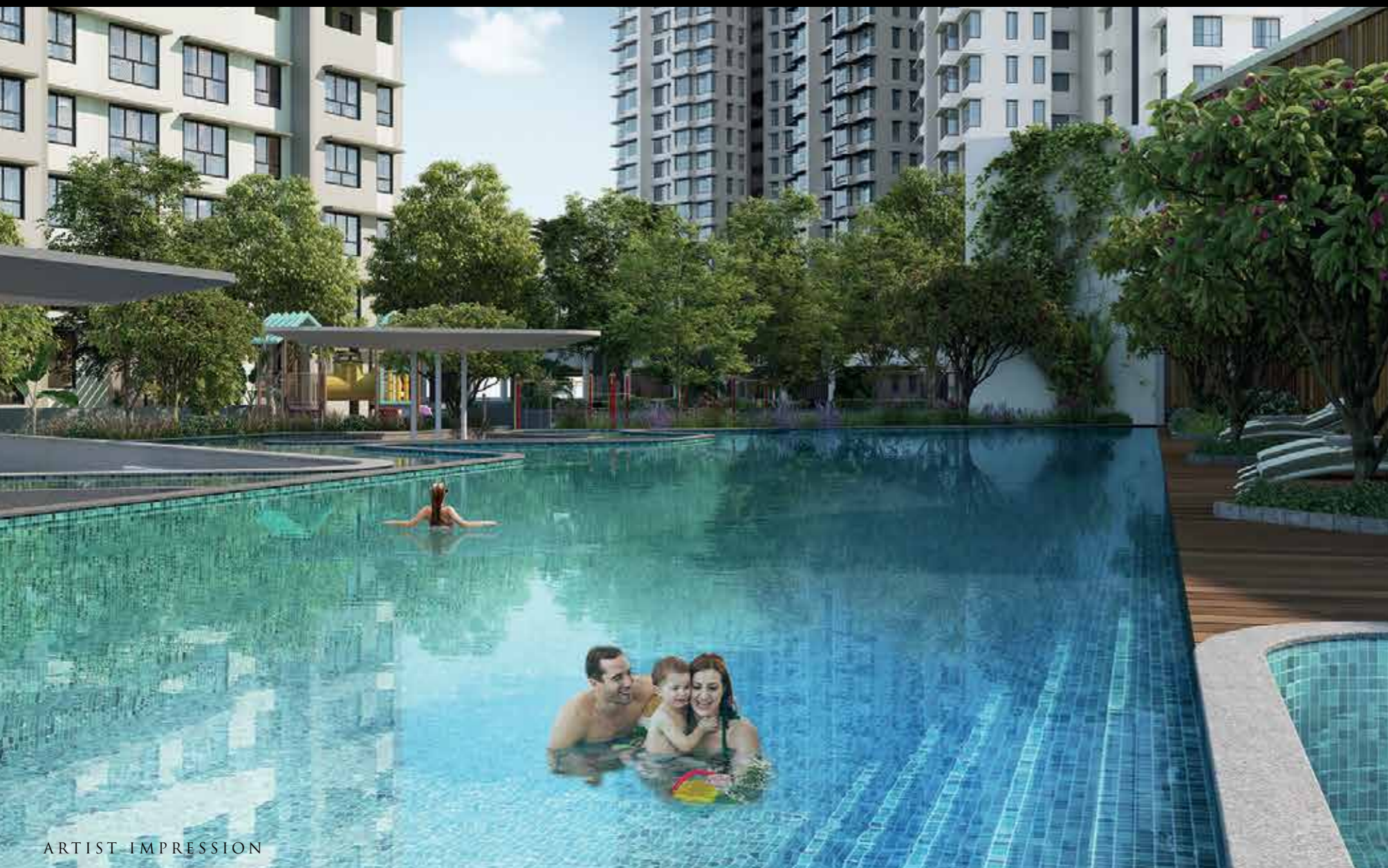
Library Room



Cycling Track







ARTIST IMPRESSION

## LIFE THRIVES, AMIDST A SPLASH OF FUN

Freedom and fun intricately bind together to give you a discernible life that pampers you to the fullest.

Our luxurious swimming pool with Jacuzzi is an embodiment of this vision. There's also a separate, shallow area for kids to safely frolic in.



ARTIST IMPRESSION

## LIVE LIFE ON A ROLL

Here the feeling of comfort is made even better by our premium amenities that cater to all your needs, dreams and wishes.

Our cycling track lets you energize your life with fitness and freedom. The kids' play area is the perfect space that keeps the little ones busy and entertained.



ARTIST IMPRESSION

## FIND YOUR CENTRE OF PEACE

Good health is at the heart of happiness. That is why we provide you with ample amenities to lead a healthy life and live happily. Our yoga lawn is specially designed to give you the perfect surroundings to refresh your mind and heal your body.



REPRESENTATIVE IMAGE

## WHERE EVEN OLD HEARTS FEEL YOUNG AGAIN

All around we have carefully crafted a world where all your loved ones can have a place to express themselves and enjoy the wonderful life around them.

At our senior citizens' area, the elderly have a place to relax, unwind and rejuvenate, in a calm and comfortable environment.



EXISTING ACTUAL IMAGE FROM PHASE-1

## AN OPEN-AIR PARADISE AND A MINI-THEATRE ASSURES AN ALL-ENTERTAINER AFFAIR

The freedom of space is a luxury that few of us can own. Our amphitheatre is an open-air paradise that provides you with a place to relax in and get entertained.

It comes with a raised seating arrangement to ensure that you are always comfortable.

The mini theatre is ideal for you to watch your favourite blockbuster movies with your loved ones.



## YOUR FITNESS DREAMS FIND A DESTINATION

Staying fit is not just a matter of motivation, but also of convenience and comfort.

We have kept this in mind and built a state-of-the-art gymnasium that gives you both, the freedom as well as the reason to stay fit.



REPRESENTATIVE IMAGE

## GET READY FOR SOME ACTIVE PURSUITS

With convenient access to sports facilities, it's easy to lead a healthy and active life.

The squash court gives you a platform where you can bring out your competitive spirit and unwind with your friends, over a game or two.

# EMBRACE NATURE

FROM THE BEST SEATS  
— IN THE HOUSE —

ACTUAL PANORAMIC VIEW FROM SITE AND  
NOT INDIVIDUAL RESIDENCES



# AIR LIGHT HEIGHT

## OUR VENTILIT DESIGN PHILOSOPHY

Your needs and your dreams are what inspire us. We design to celebrate space, comfort and safety, with no compromise whatsoever. Our philosophy of VENTILIT™ borrows from nature's choicest elements of air, height and light and is exclusive to our group.

We believe that meticulous planning is more important than a striking elevation. That's why we lay heavy emphasis on building homes that are in harmony with the sun's path and the wind's direction. Not just that, the greater floor to ceiling height makes the apartments more spacious.

Our uncompromising investment on raw materials, coupled with practical design philosophy, promises a world of maximum safety and minimum maintenance. A world where thoughtful designs elevate life's experiences and homes celebrate life itself.

**VENTILIT™** – The Wadhwa Group's proprietary design concept that maximizes air; height and light in every apartment.



ARTIST IMPRESSION

## WHAT PERFECTION REALLY LOOKS LIKE

Your living room is the heart of your home. A place where the family gets together, making memories that transcend its four walls.

We have created living spaces that make these memories even better. With cross ventilation for fresh air, double-glazed large glass windows for ample natural light, high ceilings and mesmerizing views all around you, these Vaastu compliant spaces will fill you up with positivity and a feeling of lasting comfort.



ARTIST IMPRESSION

## SWEET DREAMS AND SWEETER WAKING MOMENTS

Out here, the bedroom gives you your much needed privacy yet keeps you in awe with the beautiful surroundings all around you, with picturesque views of the hills, mangroves and the cityscape.



ACTUAL IMAGE FROM PHASE-I

## SUNRISE ON ONE SIDE SUNSET ON THE OTHER

East and west side facing large windows in the living rooms of 3 Bed residences, with ample fresh air and natural light for cross ventilation.



EXISTING SHOW FLAT IMAGE FROM PHASE-1

## UNFOLD THE RECIPE FOR A PERFECT LIFE

Discover the joys and conveniences of cooking, with ample ventilation in a semi-modular kitchen with wide parallel platforms.

Here, you can truly set your mind free, and indulge in gourmet cuisine.

## ABOUT US



**The Wadhwa Group**  
Landmarks planned with passion

We are one of Mumbai's leading real estate companies and are currently developing residential, commercial and township projects spread across approximately 4.21 million sq.m. Timely completion of projects coupled with strong planning and design innovation gives us that competitive edge. Today, our clientele comprises over 20,000 satisfied customers and over 100 MNC corporates.

All properties of The Wadhwa Group incorporate their proprietary design philosophy of 'Ventilit' which emphasizes on the elements of height, light and air. Every space is built to maximize cross ventilation, natural light, and higher floor to floor heights further add to the expanse of the apartment.

Over the years, the group has received many awards for both its commercial as well as residential projects. Among them are accolades at the CREDAI MCHI - Young Turk of Real Estate in MMR for Navin Makhija, Digital Industry Awards for Digital Excellence in Real Estate - The Wadhwa Group, CNBC-AWAAZ Real Estate Award for W54 and Economic Times best realty brands for being a Symbol of Excellence, CNBC-AWAAZ Real Estate Award 2018-2019, Economics Times Best Brand Award, Gold Rating from Indian Green Building Council (IGBC), Performance Challenge 2019 For Green Buildings and the International Property Awards Asia Pacific.

The Capital and Platina at BKC are among our noted commercial projects and The Address-Ghatkopar West, Anmol Fortune -Goregaon West, W54-Matunga West, Solitaire-Powai and Aquaria Grande-Borivali West are some of our well-known residential projects.



Man Infraconstruction is a leading construction company in India, that has executed construction work for some of the most significant port projects in the country. We continue to alter the structural landscape through several other prestigious projects in the residential, commercial, institutional and industrial spaces as well. Our commitment to excellence in quality was personified through India's first premier private port project for Nhava Sheva International Container Terminal at Jawaharlal Nehru Port Terminal, Navi Mumbai, in 1997.

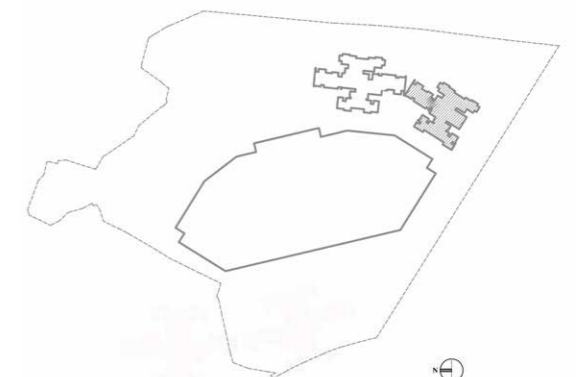
Subsequently, we have successfully worked on five ports viz., Jawaharlal Nehru Port Trust, Mundra Port, Chennai Port, Vallarpadam Port and the Pipavav Port. Man Infraconstruction has successfully executed the construction of high-rise buildings, with 3 Residential Towers of 55 storey each, which is one of the tallest towers in western suburbs of Mumbai. We have relentlessly explored and seized construction opportunities across various business verticals.



Two decades have seen the Chandak Group steadily grow in size and stature. Building resources, disbursing technologies, implementing processes. To deliver residential as well as commercial projects that speak of quality and excellence within the promised timelines. This has helped Chandak win the customer's trust and emerge as a developer of repute.

Today, Chandak Group has developed over 2 million sq.ft, with another 2.5 million sq.ft. under development, across the length and breadth of Mumbai.

# Typical Floor Plan - CIANA



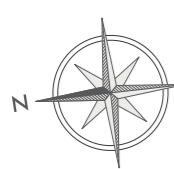
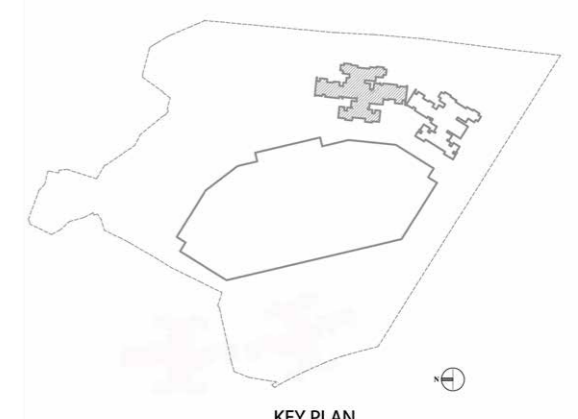
4th to 7th, 9th to 14th, 16th to 21st, 24th to 28th & 30th & 35th

**MahaRERA Registration No. P51800019950 available at website: <http://maharera.mahaonline.gov.in>**



Disclaimer: The information provided in this advertisement including all pictures, images, plans, drawings, amenities, dimensions, elevations, illustrations, facilities, features, specifications, other information, etc. mentioned are indicative of the kind of development that is proposed and are subject to the approval from the competent authorities. Pictures, visuals, perspective views of building, model, furniture and maps are artist's conceptions and not the actuals. Furniture, Fixtures, Accessories and furnishings shown in the show flat are only for representation and shall not be provided in the actual flat. The mentioned project is mortgaged to ICICI Bank Ltd. No Objection Certificate (NOC)/ permission of the mortgagee Bank would be provided for sale of flats/units/property, if required. Version 1.1 Jan 2020.

# Typical Floor Plan - AURIS



4th to 7th, 9th to 14th, 16th to 21st, 24th to 28th & 30th & 35th



**MahaRERA Registration No. P51800019950 available at website: <http://maharera.mahaonline.gov.in>**

Disclaimer: The information provided in this advertisement including all pictures, images, plans, drawings, amenities, dimensions, elevations, illustrations, facilities, features, specifications, other information, etc. mentioned are indicative of the kind of development that is proposed and are subject to the approval from the competent authorities. Pictures, visuals, perspective views of building, model, furniture and maps are artist's conceptions and not the actuals. Furniture, Fixtures, Accessories and furnishings shown in the show flat are only for representation and shall not be provided in the actual flat. The mentioned project is mortgaged to ICICI Bank Ltd. No Objection Certificate (NOC)/ permission of the mortgagee Bank would be provided for sale of flats/units/property, if required. Version 1.1 Jan 2020.



atmosphere 2  
RESIDENCES  
GMLR, MULUND (W)



Master Layout



Legend:

- |                             |                      |  |
|-----------------------------|----------------------|--|
| 01. Lap Pool                | 06. Games Lawn       | 11. Walking/Jogging Track                                    |
| 02. Kids' Pool              | 07. Party Deck       | 12. Jacuzzi  |
| 03. Pool Deck               | 08. Party/Games Lawn | 13. Magic Fountain   |
| 04. Kids' Play Area         | 09. Amphi-theatre    | 14. Connection to Landscaped Podium at 3 <sup>rd</sup> Floor |
| 05. Senior Citizen's Corner | 10. Clubhouse        |  |

Legend: Ground Floor

- |                          |                   |
|--------------------------|-------------------|
| A. Kids' Activity Zone   | F. Entrance Plaza |
| B. Cycle Track           | G. Pet's Corner   |
| C. Walking/Jogging Track | H. Drop-off       |
| D. Multipurpose Court    | J. Green Zone     |
| E. Lawn                  |                   |



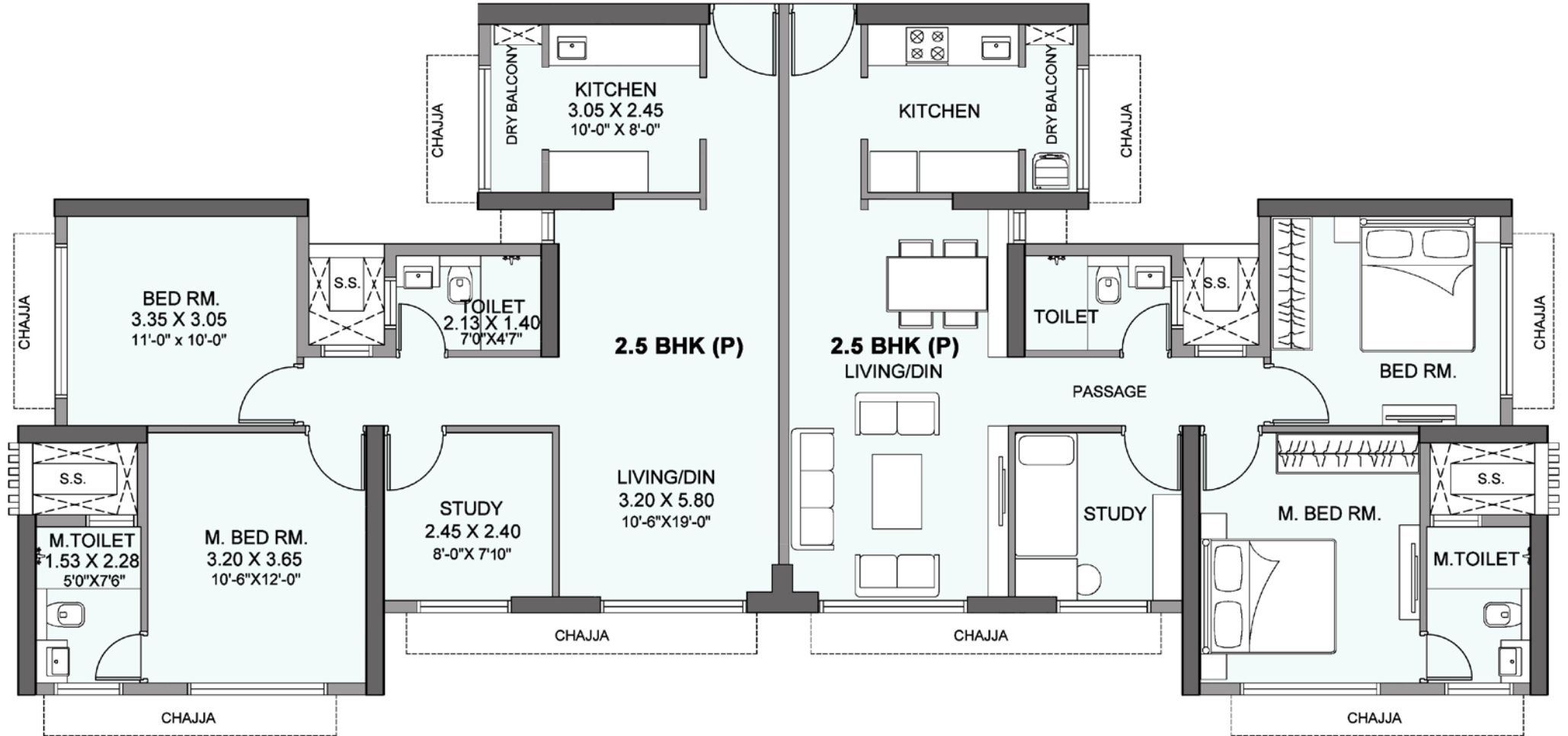
MahaRERA Registration No. P51800019950 available at website: <http://maharera.mahaonline.gov.in>

Disclaimer: The information provided in this advertisement including all pictures, images, plans, drawings, amenities, dimensions, elevations, illustrations, facilities, features, specifications, other information, etc. mentioned are indicative of the kind of development that is proposed and are subject to the approval from the competent authorities. Pictures, visuals, perspective views of building, model, furniture and maps are artist's conceptions and not the actuals. Furniture, Fixtures, Accessories and furnishings shown in the show flat are only for representation and shall not be provided in the actual flat. The mentioned project is mortgaged to ICICI Bank Ltd. No Objection Certificate (NOC)/ permission of the mortgagee Bank would be provided for sale of flats/units/property, if required. Version 1.1 Jan 2020.

# Unit Plan - CIANA

4th to 7th, 9th to 14th, 16th to 21st, 24th to 28th & 30th & 35th

GMLR, MULUND (W)



RERA Carpet Area - 69.97 Sq.M. (753 Sq.ft)

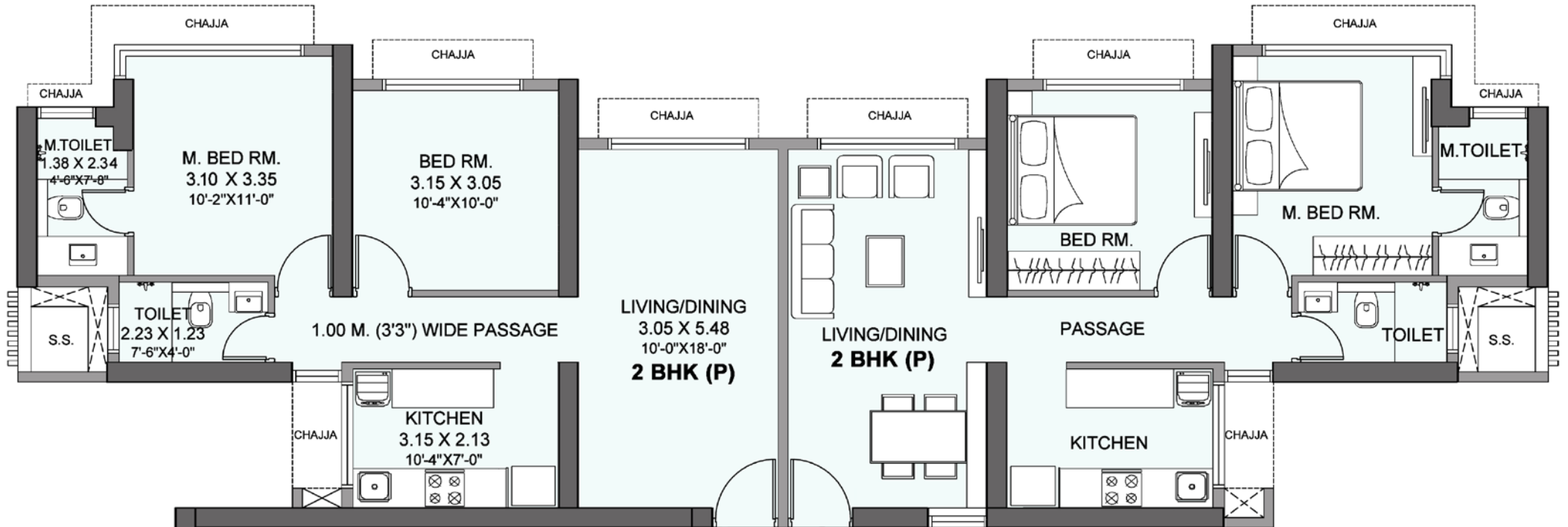


**MahaRERA Registration No. P51800019950 available at website: <http://maharera.mahaonline.gov.in>**

Disclaimer: CIANA registered as Tower D in RERA. The information provided in this advertisement including all pictures, images, plans, drawings, amenities, dimensions, elevations, illustrations, facilities, features, specifications, other information, etc. mentioned are indicative of the kind of development that is proposed and are subject to the approval from the competent authorities. Pictures, visuals, perspective views of building, model, furniture and maps are artist's conceptions and not the actuals. Furniture, Fixtures, Accessories and furnishings shown in the show flat are only for representation and shall not be provided in the actual flat. The mentioned project is mortgaged to ICICI Bank Ltd. No Objection Certificate (NOC)/ permission of the mortgagee Bank would be provided for sale of flats/units/property, if required. Version 1.1 Jan 2020

# Unit Plan - CIANA

4th to 7th, 9th to 14th, 16th to 21st, 24th to 28th & 30th & 35th



RERA Carpet Area - 58.32 Sq.M. (628 Sq.ft)

MahaRERA Registration No. P51800019950 available at website: <http://maharera.mahaonline.gov.in>

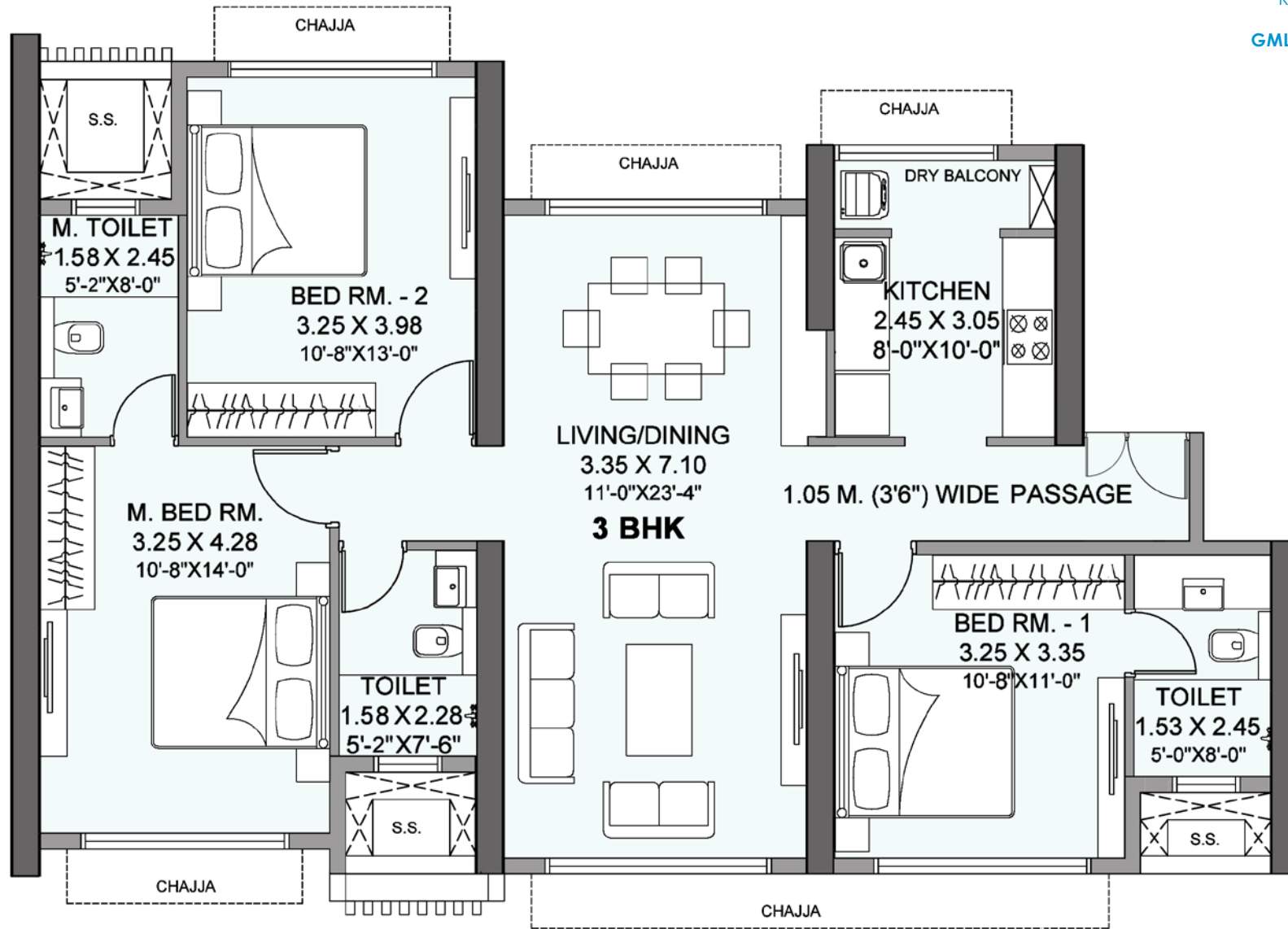
Disclaimer: CIANA registered as Tower D in RERA. The information provided in this advertisement including all pictures, images, plans, drawings, amenities, dimensions, elevations, illustrations, facilities, features, specifications, other information, etc. mentioned are indicative of the kind of development that is proposed and are subject to the approval from the competent authorities. Pictures, visuals, perspective views of building, model, furniture and maps are artist's conceptions and not the actuals. Furniture, Fixtures, Accessories and furnishings shown in the show flat are only for representation and shall not be provided in the actual flat. The mentioned project is mortgaged to ICICI Bank Ltd. No Objection Certificate (NOC)/permission of the mortgagee Bank would be provided for sale of flats/units/property, if required. Version 1.1 Jan 2020



# Unit Plan - CIANA

4th to 7th, 9th to 14th, 16th to 21st, 24th to 28th & 30th & 35th

GMLR, MULUND (W)



RERA Carpet Area - 91.63 Sq.M. (986 Sq.ft)

MahaRERA Registration No. P51800019950 available at website: <http://maharera.mahaonline.gov.in>

Disclaimer: CIANA registered as Tower D in RERA. The information provided in this advertisement including all pictures, images, plans, drawings, amenities, dimensions, elevations, illustrations, facilities, features, specifications, other information, etc. mentioned are indicative of the kind of development that is proposed and are subject to the approval from the competent authorities. Pictures, visuals, perspective views of building, model, furniture and maps are artist's conceptions and not the actuals. Furniture, Fixtures, Accessories and furnishings shown in the show flat are only for representation and shall not be provided in the actual flat. The mentioned project is mortgaged to ICICI Bank Ltd. No Objection Certificate (NOC)/permission of the mortgagee Bank would be provided for sale of flats/units/property, if required. Version 1.1 Jan 2020





# Unit Plan - CIANA

37th to 42nd 44th to 47th

GMLR, MULUND (W)



RERA Carpet Area - 63.19 Sq.M. (680 Sq.ft)



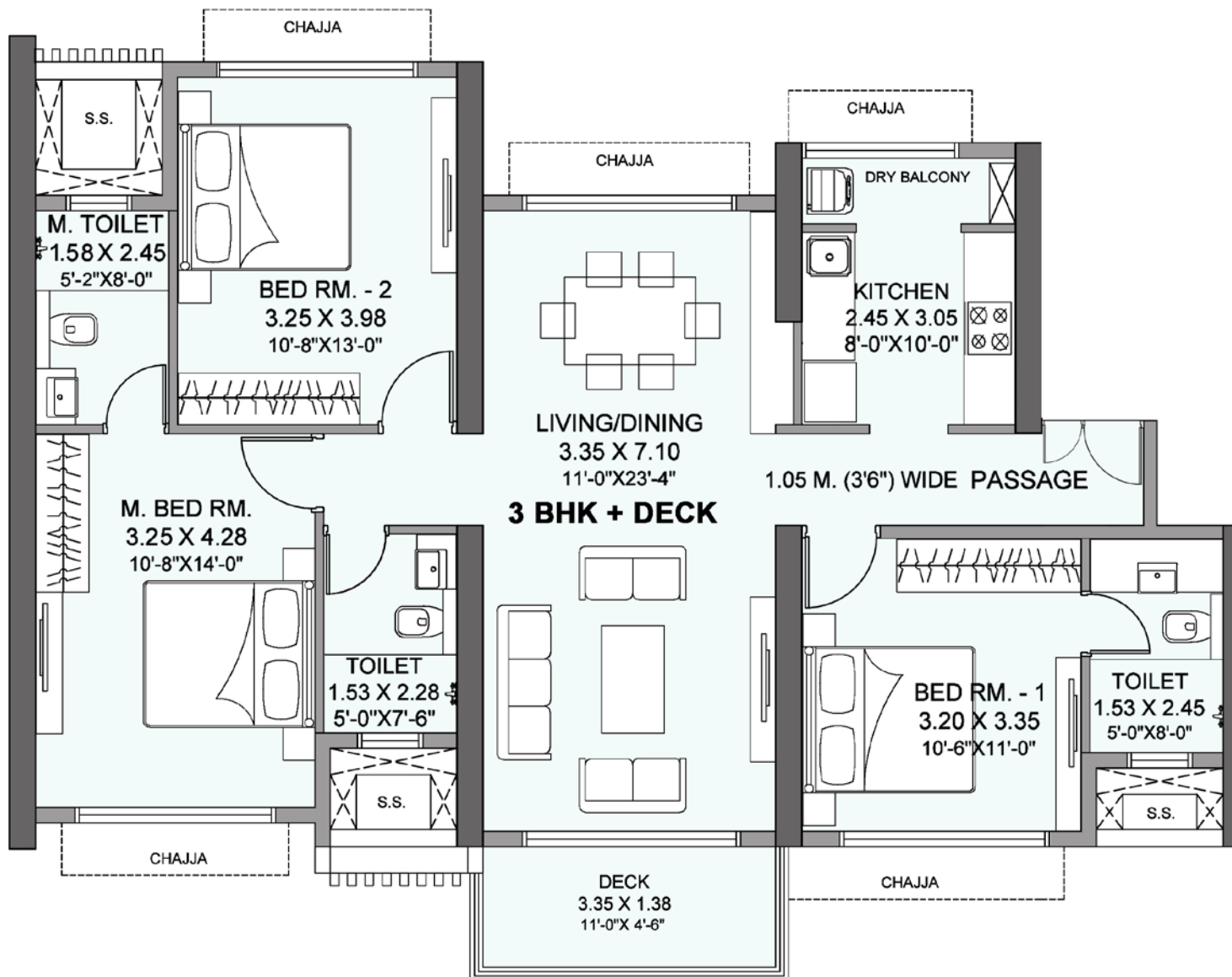
MahaRERA Registration No. P51800019950 available at website: <http://maharera.mahaonline.gov.in>

Disclaimer: CIANA registered as Tower D in RERA. The information provided in this advertisement including all pictures, images, plans, drawings, amenities, dimensions, elevations, illustrations, facilities, features, specifications, other information, etc. mentioned are indicative of the kind of development that is proposed and are subject to the approval from the competent authorities. Pictures, visuals, perspective views of building, model, furniture and maps are artist's conceptions and not the actuals. Furniture, Fixtures, Accessories and furnishings shown in the show flat are only for representation and shall not be provided in the actual flat. The mentioned project is mortgaged to ICICI Bank Ltd. No Objection Certificate (NOC)/permission of the mortgagee Bank would be provided for sale of flats/units/property, if required. Version 1.1 Jan 2020

# Unit Plan - CIANA

37th to 42nd 44th to 47th

GMLR, MULUND (W)



RERA Carpet Area - 92.21 Sq.M. (993 + 4.60 Sq.ft)



**MahaRERA Registration No. P51800019950 available at website: <http://maharera.mahaonline.gov.in>**

Disclaimer: CIANA registered as Tower D in RERA. The information provided in this advertisement including all pictures, images, plans, drawings, amenities, dimensions, elevations, illustrations, facilities, features, specifications, other information, etc. mentioned are indicative of the kind of development that is proposed and are subject to the approval from the competent authorities. Pictures, visuals, perspective views of building, model, furniture and maps are artist's conceptions and not the actuals. Furniture, Fixtures, Accessories and furnishings shown in the show flat are only for representation and shall not be provided in the actual flat. The mentioned project is mortgaged to ICICI Bank Ltd. No Objection Certificate (NOC)/permission of the mortgagee Bank would be provided for sale of flats/units/property, if required. Version 1.1 Jan 2020



**CHANDAK**  
SINCE 1986

PROMISES MADE. PROMISES KEPT.



**The Wadhwa Group**  
Landmarks planned with passion

Site Address: Atmosphere O2, Goregaon Mulund Link Road, Near Fortis Hospital, Mulund (West), Mumbai - 400080.

MahaRERA Registration No. P51800019950 available at website: <http://maharera.mahaonline.gov.in>

Disclaimer - The information provided in this brochure including all pictures, visuals, perspective views of the building and amenities are as per architectural drawings and the same shall be constructed subject to approvals of competent authorities and shall be in compliance of RERA Act and Rules and Regulations. Distances mentioned are as per Google Maps. Furniture, Fixtures, Accessories and furnishings shown in the show flat are only for representation and shall not be provided in the actual flat. The mentioned project is mortgaged to ICICI Bank Ltd. No Objection Certificate (NOC)/ permission of the mortgagee Bank would be provided for sale of flats/units/property, if required. Images used for representation purpose only. Version 0.1 \*T & C Apply.

