



## CREATED TO INSPIRE

Presenting the Jewel in the Crown, in Dhanori. Pride Aashiyana. Your chance to live the high life. With a unique blend of form and function that transforms your dreams into reality, Pride Aashiyana is a place that is perfectly poised between an accessible city life and a luxurious green retreat.

Built over a magnificent 10 acre plot that overlooks the hill, Pride Aashiyana seamlessly integrates space, style, comfort and all the other elements of a luxurious residence, that is so important for modern day living.



**PRIDE**  
*Aashiyana*  
DHANORI LOHEGAON ROAD  
**2 & 3 BHK APARTMENTS**

### OPEN SPACE NO. 1

1. CLUB HOUSE WITH GYM
2. SWIMMING POOL WITH KIDS POOL
3. PATTERNED PLANTATION
4. PARTY LAWN
5. WALKWAY 1.8 MTS WIDE
6. SEATING AREAS

### PODIUM GARDEN 1

1. PARTY LAWN
2. CHILDREN'S PLAY AREA
3. SENIOR CITIZEN'S AREA
4. PATTERNED PLANTING
5. AMPHITHEATRE WITH STAGE
6. SEATING PAVILLION
7. WALKWAY 1.8 MTS WIDE
8. FLOWERING SHRUBS PATTERNED PLANTATION

### PODIUM GARDEN 2

1. MULTIPURPOSE HALL
2. ARRIVAL COURT WITH FOUNTAIN WATER FEATURE
3. STEPPING STONE WALKWAYS
4. SKATING RINK
5. PARTY LAWN
6. SEATING PAVILLION
7. BASKET BALL COURT (15.0X13.7M SIZE)
8. CRICKET PRACTICE PITCH (20.0X3.50M SIZE)
9. SENIOR CITIZENS SEATING COURT
10. 1.65 MTS WIDE WALKWAY



## AS PERSONAL AS IT GETS

Pride Aashiyana takes conceptualizing for dwellings to a spiritual level. We try to make our spaces as personal as possible. Our well thought out designs, amenities and facilities are the gold standard of the immediate surroundings.



## AMAZING GRACE

The incredible beauty of the views that you will enjoy from your living room at Pride Aashiyana are matched only by the luxurious fixtures and fittings that adorn your entire apartment. Choose from our well ventilated magnum opus 3BHK apartments or space optimized 2BHK apartments that set the standard in the area.





## STRONG FOUNDATIONS

Pride Aashiyana is brought to you by Pride Housing, a world class property development conglomerate, that is changing the cityscapes of Pune and Bengaluru with its bold new designs, high engineering, ethical standards and professional outlook. It is no wonder that Pride Housing is a preferred partner for local and international corporates, IT and ITES companies, business owners and home buyers.



## SUPERLATIVE AMENITIES

Infrastructure at Pride Aashiyana is designed to elevate your comfort, recreation and mobility needs to the next level. The complex boasts of a host of club class sports facilities to keep you healthy and fit, ample greens to take care of your leisure quotient, a convenient shopping arcade to cater to your immediate shopping needs, a 'Keep Learning Centre' to contribute to the overall development of your child and a shuttle bus service to keep you mobile.





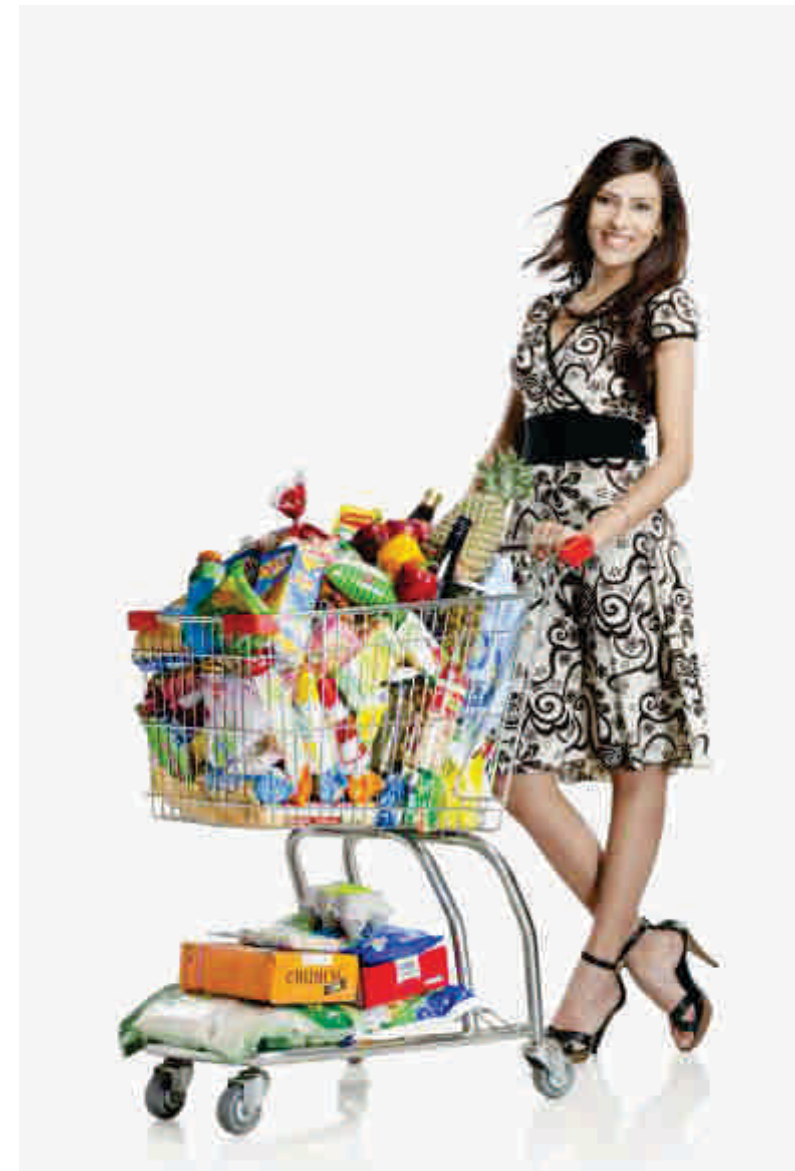
## IT'S ALWAYS A GREAT LEARNING EXPERIENCE

Our unique and patented "Keep Learning Centre" will aid you in creating the right environment for your child's physical, mental, psychological, emotional and intellectual development well within the secure environs of Pride Aashiyana. The KLC offers your child tutoring in sports & games, arts & craft, dance & music, yoga, abacus and reading through a trained faculty, better teaching aids and an ambience that is hard to beat.



## COMMON AMENITIES AND FEATURES

- Decorative large entrance gate with security cabin
- Designer entrance lobby
- Driveways in concrete & pathways in interlocking blocks with landscaping
- Landscaped gardens
- Children's play area with equipment
- Swimming pool & baby pool with deck, changing rooms
- Tennis court
- Basketball court
- Skating rink
- Jogging track
- Piped Gas
- Cricket pitch with net
- Keep Learning Centre
- Club house with multipurpose hall
- Convenient shopping
- Shuttle bus service
- Checkered tile flooring in parking
- Mirror polished kota stone for staircase
- Automatic lift
- Generator backup for lift, pumps, common lights & club house
- Fire fighting system
- Rain water harvesting for entire project
- Sewage treatment plant





## SPECIFICATION

### FLOORING

- 1m X 1m Vitrified flooring
- Matt finish ceramic flooring in toilet & for private terrace

### KITCHEN

- Modular kitchen with hob & chimney
- Black granite kitchen platform, 650 mm width with S. S. Sink
- 2' 6" height glazed tile dado above platform
- Provision of electric power for Fridge, Washing Machine

### TOILET

- Solar heated water (in master bedroom only)
- Concealed plumbing with hot & cold arrangement for shower
- Quality C. P. fittings of Jaquar / equivalent make in all toilets
- Colored glazed tiles dado up to lintel level
- Provision for exhaust fan in all toilets
- All sanitary ware of Cera / Euro / equivalent make

### ELECTRIFICATION & CABLING

- Concealed copper wiring with modular switches in all flats
- Provision of telephone point in living room
- Provision of TV Point into the living & master bedroom
- Provision of A. C. point in master bedroom

### WINDOWS

- Aluminium powder coated windows with mosquito net and oil painted M. S. Grill
- Adjustable aluminium powder coated louvered windows with oil painted M. S. Grill for all toilets
- Aluminium powder coated sliding doors for terrace

### PAINTING

- OBD paint on walls & ceiling for all rooms
- Acrylic external paint



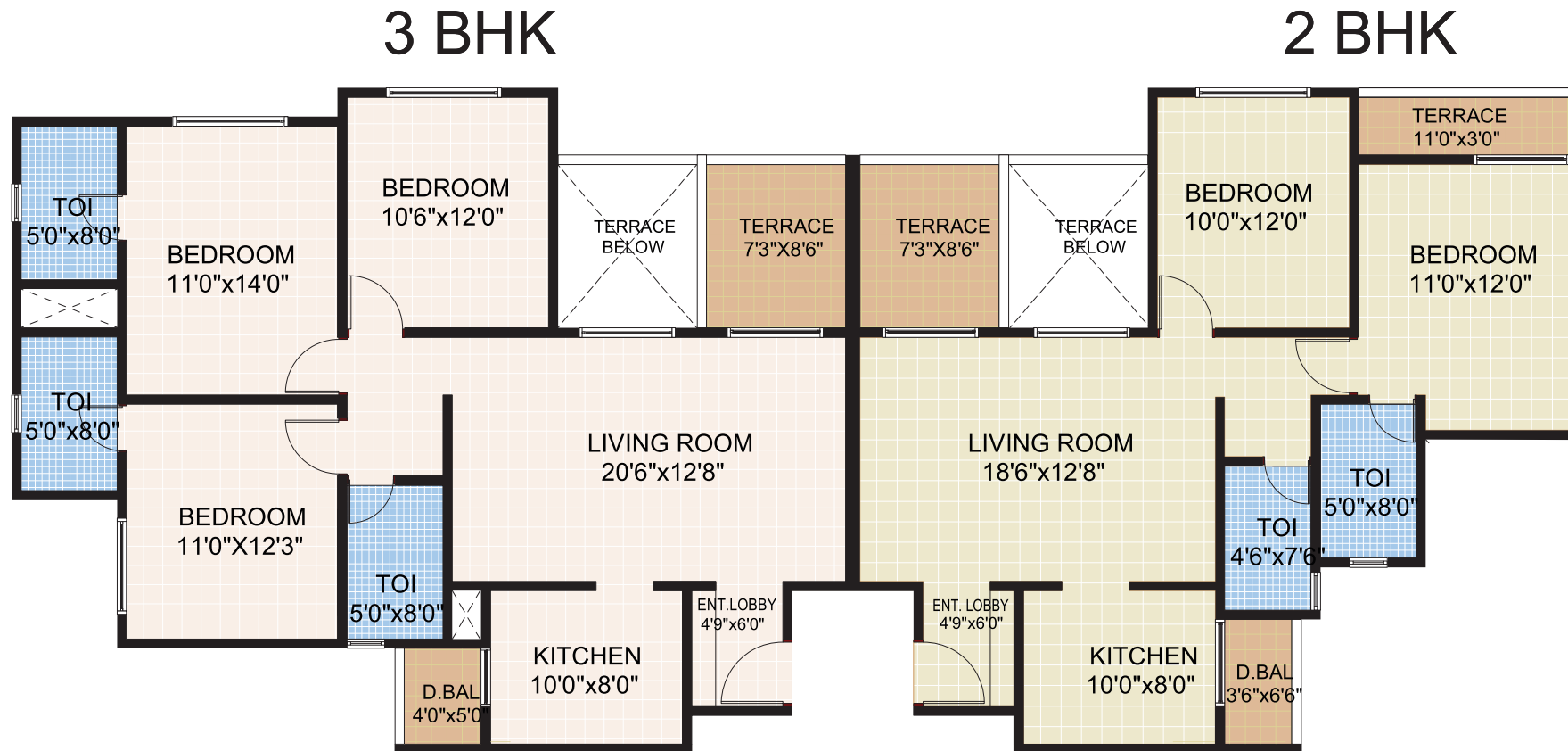
3 BHK

2 BHK

2 BHK

3 BHK





Type	Carpet Area	Terrace	Total Carpet Sq. Ft	Saleable Area sq. ft.
3 BHK	979	62	1041	1400
2 BHK	759	95	854	1150

## LOCATION MAP



## SOME OF OUR ONGOING PROJECTS



ALOMA COUNTY  
Aundh



PRIDE PLATINUM  
Baner



SAPPHIRE PARK  
Park Street, Wakad



PARK ROYAL  
Wakad

### CREDITS:

Architect M/s. Abhikalpan Architects & Planners	Landscape Designer Design Terra	R.C.C. Consultants Sunil Mutalik & Associates	Legal Advisor Amol Patayeet & Associates	Branding & Communication The Brand Fibre
---	------------------------------------	---	--	--

Note : The contents of this brochure are purely conceptual and have no legal binding on us. The developers reserve the right to amend the layout, plans, number of floors, elevation, colour scheme, specifications and amenities etc.



**Pride Housing & Constructions Pvt. Ltd.,**  
5th Floor, Pride House, 108, Ganeshkhind Road,  
Near Pune University, Pune- 411016.  
Call: +91 20 67091000 (8 lines)

**Site Address :**  
Survey No. 284,  
Dhanori Lohegaon Road, Pune - 411 032  
**Call: 97644 80000**

**Email : [aashiyana@pridegroup.net](mailto:aashiyana@pridegroup.net)**  
**[www.pridegroup.net](http://www.pridegroup.net)**

