

Construction Finance from



Architect &
Structural Consultants



Electrical, HVAC and Fire Consultants
Synergy Infra Consultants Pvt. Ltd.

Plumbing Consultants
ESVE Design Solutions Pvt. Ltd.

Member



Promoters



Accurate Developers

On Time.....Every Time

Site Address: Accurate Wind Chimes.,
Survey No: 342/1 & 343, Opp. Chaitanya College,
Narsingi – Mehdiapatnam Main Road, Narsingi, Hyderabad 500089.

Gift your child, a Child Focused Home

+91 7670999000

Email: sales@accuratedevelopers.in
www.accuratedevelopers.in

Disclaimer: Specifications and amenities mentioned in this brochure are only representational and informative. Information, images and visuals, drawings plans or sketches shown in this brochure are only an architect's impression and are only indicative of the envisaged developments. The Developer/Promoter reserves rights to make additions, deletions, alterations or amendments as and when it deem fit and proper, without any prior notice. No representation or warranty is made or intended as to the accuracy or completeness of information and no commitments are being given under this brochure as to its suitability or adequacy for any purpose or otherwise howsoever. All dimensions mentioned in the drawings may vary/differ due to construction contingencies and site conditions. Actual product/ development and any other aspect may differ from what is portrayed herein. All layouts, plans, specifications, dimensions, designs, measurements and locations are indicative and may not be to scale and are subject to change as may be decided by the company or competent authority. Revision, alteration, modification, addition, deletion, substitution or recast, if any, may be necessary during construction. Interior designing used in the flat/unit plan and images are only for representation purpose. The picture of the proposed Residential Flat/Unit and all furniture's, fixtures, items, electronic goods, amenities, landscaping, accessories etc. specified therein are only for the purpose of show casing the Residential Flat/Unit and the Developer is not liable / required to provide any furniture, items, electronic goods amenities, accessories etc. as displayed in the pictures. The views shown in the picture may vary over period of time and Developer/Promoter does not guarantee the same. All intending purchaser/s are bound to inspect all plans and approvals and visit project site and apprise themselves of all plans and approvals and other relevant information and nothing in this brochure is intended to substitute to the intending purchaser the actual plans and approvals obtained from time to time. The relationship between the Developer and the actual customers will be governed strictly by the agreements to be executed from time to time and not on the terms of this brochure. This brochure is merely conceptual and is not a legal document. It cannot be treated as a part of the final purchase agreement/s that may be executed from time to time. The Developer reserves right to change, amend, modify the contents of the brochure and architectural specifications during construction stages. The Developer/Management holds no responsibility for its accuracy and shall not be liable to any intending purchaser or any one for the changes/alterations/improvements so made during construction.

Note: All areas indicated in the brochure are super built up areas (SBA)

Accurate
WIND CHIMES



Presenting



Live. Learn. Play. Achieve.

TSRERA Reg. No. P02400000042

**Child Focused Homes
is a reality now.**

**I wish I had this when I was young
and aspiring to be a Champion.**

Paina Nehwal



About Accurate Developers

Accurate Developers Pvt Ltd provides residential spaces built with meticulous planning, superlative design and uncompromising quality coupled with world class amenities. 'On Time...EveryTime' is the mantra which amplifies the importance we place for timely completion, guaranteed possession and handing over of our projects.

The company is strategically and operationally controlled by its Chairman & Managing Director Mr. Mitesh Kulkarni, an eminent name in the real estate industry. The company draws strength from his rich experience in design and construction of large residential and commercial spaces.

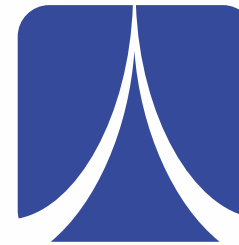
The technical team has substantial experience in civil construction with first class contractors such as L&T, Shapoorji Pallonji, NCC and the like. The team has eminent civil engineers with experience in construction of residential spaces.

All projects are executed by employing the finest architects, designers and contractors. Our projects are managed professionally and the end result is always splendid.

We understand the needs of our customers and realise that the hustle-bustle of city life can lead to environmental stress. So our homes are designed to interact with nature and employ optimal climatology in realty. Air, Sunlight, Water and Health are our priorities. Our design ensures optimal comfort for the customer.

Our core values comprise of punctuality, transparency, creativity, commitment, quality, integrity and environmental sustenance. With such cornerstones, trust comes naturally. We just don't build homes, we build lifelong relationships.

At Accurate Wind Chimes, we welcome you as our valued customer.



Accurate Developers

On Time.....Every Time



Conceptual Photograph

This is a conceptual presentation only and the actual development may vary from image.

Child Focused Homes is a reality now.

When I was a kid, I too had dreams like many of you. I wanted to play for the nation. But it was not so easy.

For my parents it was a herculean task to take care of my academics, manage my diet, get me to practice at a good stadium with a good coach. It was like they never had their life. It is because of their sacrifices that I could become what I am.

But Now, you don't have to run pillar to post to provide your child the best coaching.

Pia Nehwal

Location Advantage

- 10 mins. - Microsoft - Financial District
- 10 mins. - Oakridge and DPS
- 30 mins. - Jubilee Hills
- 30 mins. - Banjara Hills
- 30 mins. - International Airport

Approximate Travel Times

 **CHILD FOCUSED HOMES**





Welcome to India's First Child Focused Homes

Accurate Wind Chimes is just the right place to live a peaceful life. Watch your children grow independently in a safe and secure environment within the confines of your gated community.

At the Child Focused Homes, the best of coaches and mentors are available right at your doorstep. Commuting from one end of the town to the other and getting stuck in traffic jams is a thing of the past.

We help you make your child a champion.



Coaching under professional coaches

Hassle free mentoring, to make your child a champion

At Accurate Wind Chimes, we help to make your child a champion. The best of trainers are available at your door step to guide and train your child in a state-of-art Club House.

The Club house is managed by “Active life” a leading professionally managed company, supporting individuals & corporate teams to live, work & play healthy for a sustainable growth in personal and professional dimension.

Club house is opened for residents and the above facilities are being made operational in phases.

Active Life	Swimming
	Badminton
	Snooker
	Chess
	Table Tennis
	Health Club
	Gymnasium
	Basketball
Dance	Martial Arts
	Dance Coaching
Music	Music Coaching
Active Life	Lifestyle management
Art of living	Yoga / Meditation

Conceptual Images



Actual Image

Life in a living home.

Before you decide to invest in a home, it's only natural for you to ascertain all your parameters of judgement - location, access, elevation, construction and of course, price. After putting ourselves in your shoes, we decided to go a few steps further, so that you not only get everything you expect, but also a home that actually lives. With excellent ventilation and abundance of natural light in every room, the homes at Accurate Wind Chimes actually breathe.

- Plenteous ventilation
- Rain water harvesting
- Ample use of natural light
- Green and serene surroundings



Homes that are designed for Happiness.

At Accurate Wind Chimes every small detail, right from the floor area to the utility space, natural lighting to electrical connectivity, cross ventilation to sound enclosure, open areas to storage space, owner privacy to building security; has contributed to the final design so that vibrant energy and happiness emanate from every corner of your home.

We also provide a large park to be exclusively used as a walkway, by the river bank. This will be handed over before completion of the project.



Comforts and Conveniences, at your doorstep.

One of the biggest benefits of living in a community like Accurate Wind Chimes is the plethora of facilities that are available to you within your neighbourhood. So after a long day at work, you can go back home peacefully, knowing that you won't need to encounter traffic for rest of the day.

Amenities:

- Swimming Pool | Badminton | Snooker
- Chess | Table Tennis | Health club
- Gymnasium | Basketball | Martial Arts
- Dance Coaching | Music Room
- Day Care Center | Lifestyle Management
- Yoga/Meditation | Party Hall
- Cafeteria | Clinic | Convenience Store
- CCTV with round the clock security at the entrance

The above amenities will be made available gradually in phases before completion of the project .



Actual Image

Conceptual Images



Actual Image





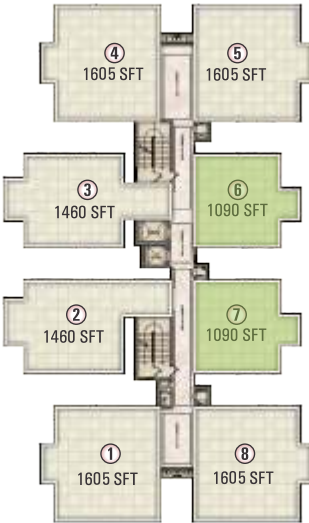
Block - C



Block - C



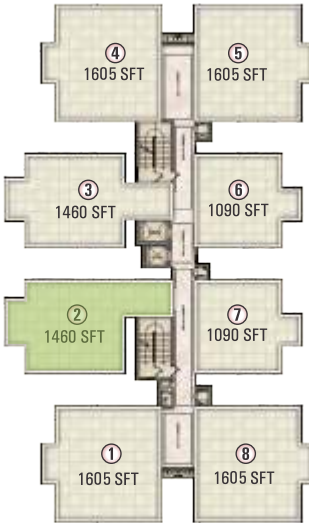
2BHK (West Facing)
Saleable Area: 1090 SFT
Flat No: 6, 7



Block - C



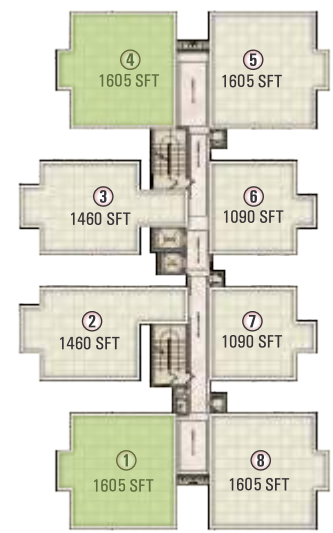
2BHK (East Facing)
Saleable Area: 1460 SFT
Flat No: 2



Block - C



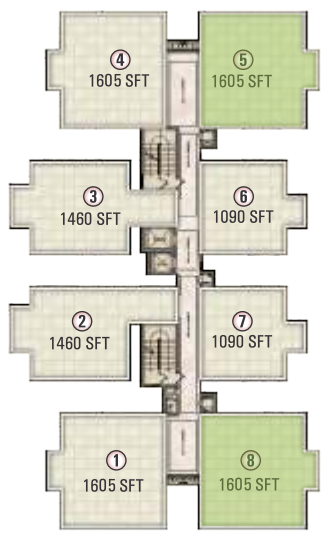
3BHK (East Facing)
Saleable Area: 1605 SFT
Flat No: 1, 4



Block - C



3BHK (West Facing)
Saleable Area: 1605 SFT
Flat No: 5, 8



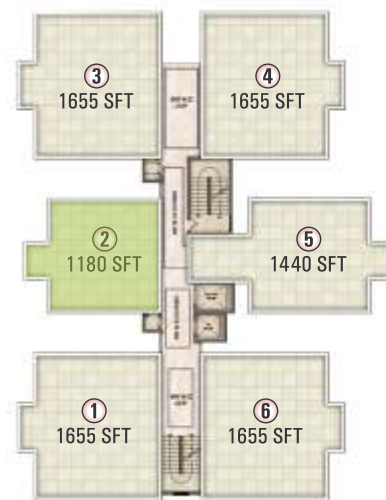
Block - D & E



Block - D & E



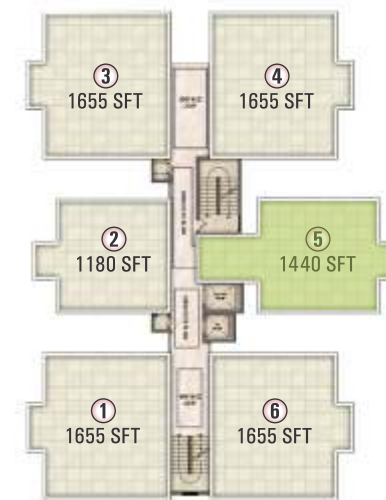
2BHK (East Facing)
Saleable Area: 1180 SFT
Flat No: 2



Block - D & E



2BHK (West Facing)
Saleable Area: 1440 SFT
Flat No: 5



Block - D & E



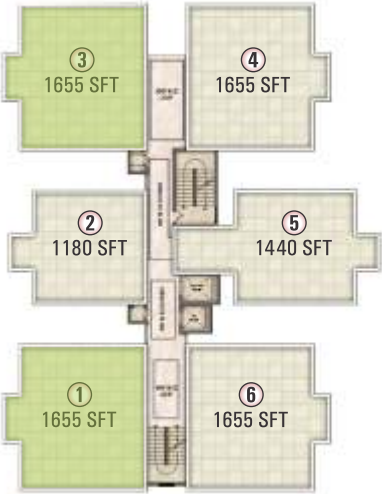
3BHK (West Facing)
Saleable Area: 1655 SFT
Flat No: 4, 6



Block - D & E



3BHK (East Facing)
Saleable Area: 1655 SFT
Flat No: 1, 3



Block - F



Block - F



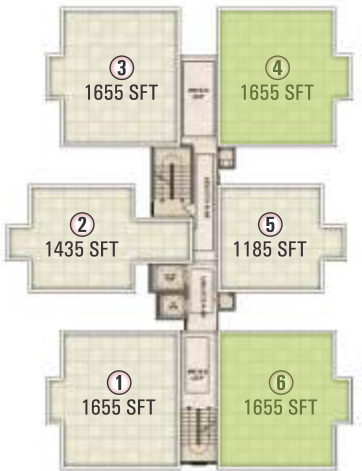
3BHK (East Facing)
Saleable Area: 1655 SFT
Flat No: 1, 3



Block - F



3BHK (West Facing)
Saleable Area: 1655 SFT
Flat No: 4, 6





Conceptual Image of Tower C



Conceptual Image of Tower D



Actual Photograph of Tower G



Actual Photograph of Tower H

SPECIFICATIONS

FOUNDATIONS & STRUCTURES

- RCC Framed Structure to withstand wind and seismic loads for Zone III

SUPER STRUCTURE

- Solid Block Masonry for external and internal works.

PLASTERING

- Internal: Single Coat Cement Plastering finished with gypsum/putty finish.
- External: Double coat Sand faced Cement Plastering.
- Ceiling: Single Coat Sand faced Plastering.

JOINERY WORKS

- Main Door: Solid Wood/Engineered door frame to full width of jamb. Both Side Veneer pre Engineered Door shutter with Melamine/PU polish. Hardware of reputed make.
- Internal Doors: Hard Wood frame with hard core solid flush shutter with both side veneer finished with Melamine/PU polish. Reputed make hardware.
- Toilet Doors: Hardwood frame with hard core solid flush shutter with one side veneer finished with Melamine/PU polish and other side lamination. Reputed make hardware.
- French door: Sliding type with Single glazing
- Windows: UPVC/ Aluminum sliding windows

PAINTING

- Internal and Ceiling: Two Coats of OBD on ceiling , Two coats of Acrylic Emulsion Paint over a base coat of primer on internal walls with roller finish.
- External: Double coat Weather Shield Paint over a coat of primer.
- Parking Area: OBD on ceiling and walls, parking signage with radium paint. Drive way route indicator with radium paint.

FLOORING

- Vitrified tiles of standard make for drawing, dining, living, bedrooms and kitchen.
- Good Quality acid resistant anti skid ceramic tiles for toilets

TILES CLADDING & DADOING

- Toilets: Glazed Ceramic tiles dadoing up to 7'0" height
- Utility/Wash: Glazed ceramic tiles dado up to 3'0" height.

KITCHEN

- Provision for normal water connection.

TOILET

All toilets will consist of:

- Washbasin
- Hot and cold mixer with overhead shower
- Provision for Geyser
- All CP fittings are of reputed make

ELECTRICAL

- Concealed copper wiring of standard make, in conduits for light, fan, plug and power points wherever necessary
- Power plug for cooking range chimney, refrigerator, micro oven, mixer grinder in kitchen
- Plug points for TV & Audio systems etc.
- 3-Phase supply for each unit and individual meter boards
- Miniature Circuit Breakers (MCB) & ELCB for each distribution board
- Telephone/ Intercom provision for master bedroom and drawing room.

CABLE TV

- Concealed conduit provision for living room and master bedroom

INTERNET

- Concealed conduit provision for all flats

LIFTS

- One Automatic passenger lift with V3F technology and one service lift with V3F technology

GENERATOR

- 100% DG backup with acoustic enclosure for common area and 750W backup for all apartments

LOCATION MAP

