

WESTERN  HEIGHTS
up and away



WESTERN  HEIGHTS
up and away

Sales and Site Office Address:
J.P. Road, Opp. Gurudwara, 4 Bungalows,
Andheri (W), Mumbai 400 058.
info@adanirealty.com | www.adanirealty.com

www.adanirealty.com | 

The project has been registered under MahaRERA registration number: P51800001290 | P51800002219
and is available on the website <https://maharera.mahaonline.gov.in> under registered projects.

The project has been registered via MahaRERA registration number: P51800001290 | P51800002219
and is available on the website <https://maharera.mahaonline.gov.in> under registered projects.



Actual Image



Reg. No.:
P51800001290
P51800002219

Stay up close. Stay up and away.

What's in a name? Quite a lot, when it comes to Western Heights. It connotes the height of magnificence, the best of amenities and an abode that epitomises grandeur. The carefully planned residences start from the 7th floor at a height of almost 100 feet, which means you stay up and away from the hustle-bustle of the city, yet right at the heart of it. To add to its magnificence, it was named the Premium Project of the Year at the Accommodation Times 2nd International Real Estate Annual Awards, 2015 & 2016. A modern marvel, a landmark and a work of art; these are just some of the things Western Heights symbolises. Come explore the 'up and away' lifestyle.

Ready for Possession. Occupancy Certificate received.



Magically Located.

Nestled in Andheri West, Western Heights is right next to the D.N. Nagar metro station and close to schools, colleges, malls and the airport. Thanks to the flyovers and its proximity to the Western Express highway, its connectivity to the rest of the city is second to none. A location that's truly magical in every way.

Stay Connected.

The project is strategically located close to transit points, making it easily accessible and well connected to other parts of the city.

Category	Location	Km
Connectivity	D.N. Nagar Metro Station	0.2
	New Link Road	0.2
	S.V. Road	3.0
	Andheri Railway Station	3.5
	Western Express Highway	5
Airports	Domestic	7
	International T2	6
Work	BKC	11
	Laxmi Industrial Estate	3
	SEEPZ	6
	MIDC	6
Health	Kokilaben Dhirubhai Ambani Hospital	0.2
	Akansha Women's Hospital	1.2
	Brahmakumari's BSES M.G. Hospital	4
Shopping	Infinity Mall	1
	City Mall	1.5
	Fun Republic	1.3
	Star Bazaar	0.7
Educational Institutions	Bhavan's College	1.9
	S.P. Jain College	3
	Sardar Patel Engineering College	1.8
	Jankidevi Public School	1.7
	Gyan Kandra Secondary High School	0.6
	Kamladevi Jain High School	1.1
	St. Louis Convent School	0.7
	Ecole Mondiale World School	2.9
	Rajhans Vidyalaya	2.4
	Hansraj Morarji Public School	2.4
Places of Worship	Swami Samarth Mandir	1
	Gurudwara	0.2
	St. Blaise Church	1
	Shiv Temple	1.2
	Jain Derasar	1
Restaurants and cafes	Kailash Parbat	2.4
	China Gata	2.4
	Mainland China	2.5
	Sasural	1.6



Spectacular Views: See the city from a whole new perspective.



Actual image



Actual image

The Grand Lobby.

At Western Heights, the Grand Lobby engulfs you in a cocoon of luxury the moment you step in. It's your invitation to a world of grandeur and a sneak peak into the sheer magnificence that is to unfold. Come, discover what it's like to be up and away.

Podium Level - 6th Floor

The 6th floor at Western Heights is dedicated to amenities that add to your lifestyle quotient. The well-planned amenity level has something for everyone, and gives you fewer reasons to step out. Gymnasium, swimming pool, exercise deck or a dry landscape, you name it, we've got it.



A getaway like no other.

- 1. Garden
 - 2. Swimming Pool
 - 3. Kids Jacuzzi Pool
 - 4. Pool Deck
 - 5. Water Feature
 - 6. Lawn
 - 7. Outdoor Seating
 - 8. Gymnasium
 - 9. Exercise Deck
 - 10. Gents Rest Room
 - 11. Ladies Rest Room
- 12. Salon
 - 13. Gents Steam
 - 14. Ladies Steam
 - 15. Gents Massage Room
 - 16. Ladies Massage Room
 - 17. Juice Bar
 - 18. Studio/Yoga area
 - 19. Multipurpose Hall
 - 20. Pantry & Washrooms (Multipurpose Hall)
 - 21. Hobby Zone
 - 22. Lounge
- 23. Indoor Games
 - 24. Society Office/Meeting Room
 - 25. Dry Landscape
 - 26. Indoor Games
 - 27. Female Changing Room
 - 28. Male Changing Room
 - 29. Wing A - Lobby
 - 30. Wing B - Lobby
 - 31. Wing C - Lobby

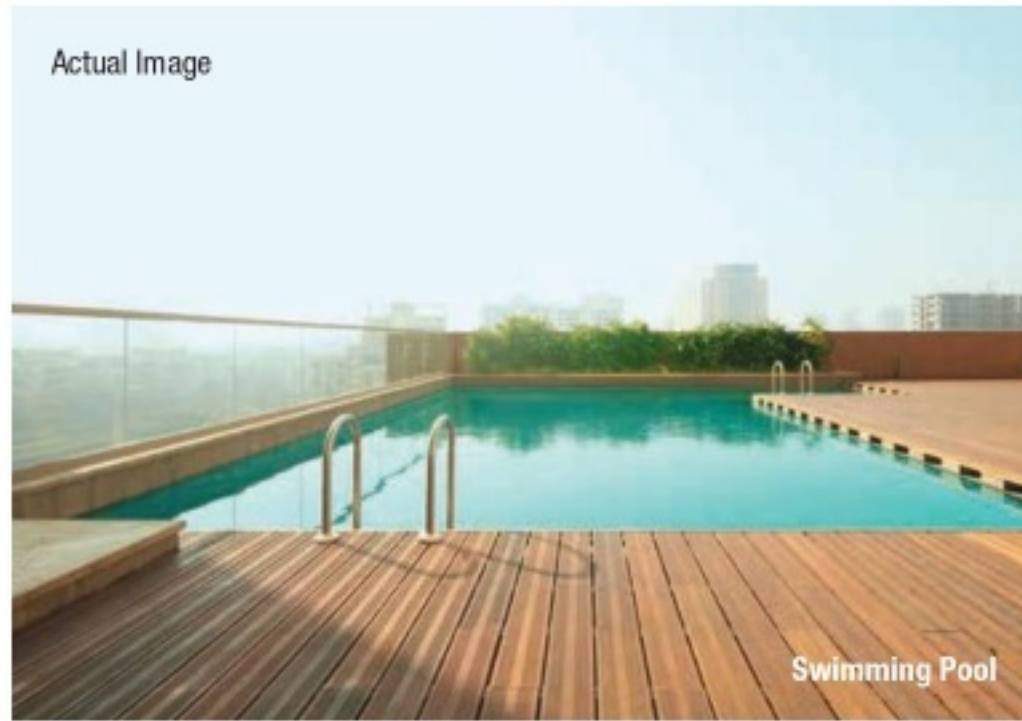




Play more, every single day.

Staying active is the surest way to lead a healthy life. And at Western Heights, there's close to 69,000 sq. ft. dedicated to a host of amenities on the podium and rooftop. From a cool blue swimming pool and modern gymnasium to an indoor games area and outdoor seating area, there's something for everyone at this marvel of a residential project.

Stay refreshed by taking a plunge in the cool blue water of the Swimming Pool. It's the perfect way to begin your day, or for that matter, end it.



Events, get-togethers or simply a birthday bash, everything can be held with a touch of elegance at the Multi-purpose Hall.



Let your kids immerse themselves in a world of adventure.



Breathe, stretch and uplift your body and mind to a higher state of well-being.



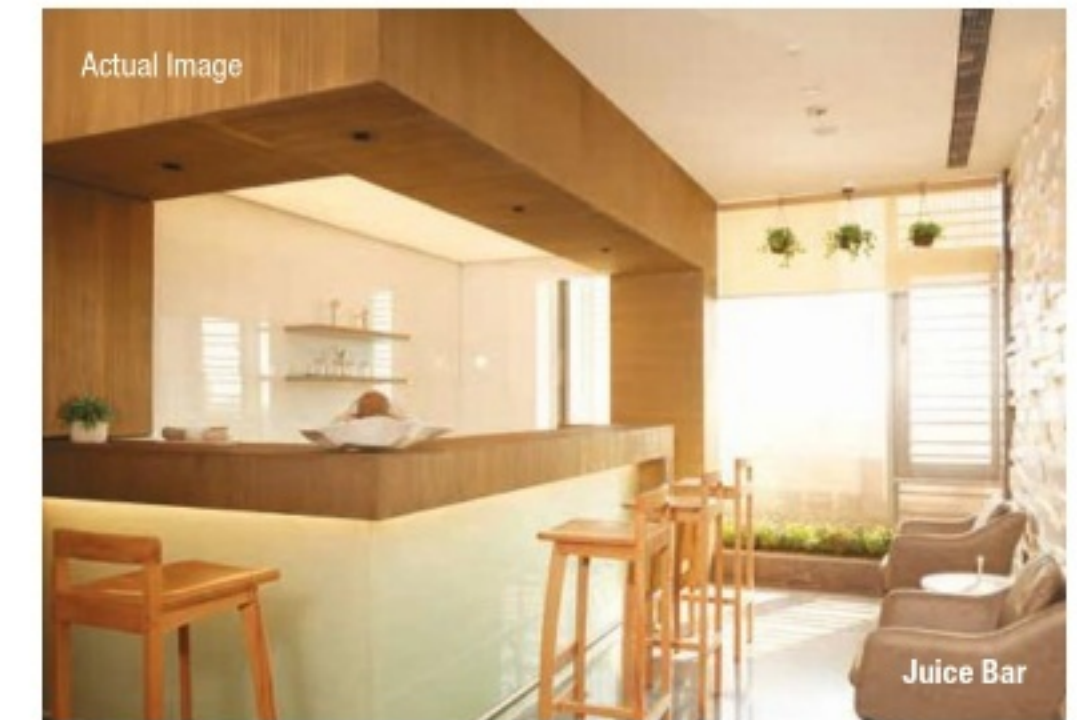
Stay active and bring out your competitive side at the Basketball court.



It's so much easier to stick to your fitness regime thanks to the well-equipped gymnasium on the podium level. Stay fit. Stay active.



Leisure time will never be the same again. Simply head to the podium and indulge in a multitude of indoor games and spend some quality time with your family.



Unwind by sipping on a refreshing glass of your favourite drink.

Terrace - 30th Floor

Perched on the 30th floor, the terrace embodies the 'up and away' experience at Western Heights and is the best place to experience The Good Life. Unwind with the sky as your roof at the Star gazing deck. The rooftop lounge is the perfect place to host your parties and take in the breathtaking view of the city's skyline.



Rooftop Lounge



Actual image



Terrace Plan



Project Plan

When it comes to immaculate spaces, Western Heights is second to none. The carefully planned project is aesthetically laid and crafted to perfection. Every aspect adds to the overall charm of its design, making you fall in love with the project the minute you lay your eyes on it.





C - WING

B - WING

A - WING

- 2 BHK
- 2.5 BHK
- 3 BHK
- 3.5 BHK
- 4 BHK

WING	TYPE	UNITS
A - WING	3 BHK	3, 4, 6, 7
	3.5 BHK	1, 2, 5
B - WING	2 BHK	5, 6
	2.5 BHK	2
	3 BHK	1
	3.5 BHK	4, 7
	4 BHK	3
C - WING	3 BHK	1, 2, 3, 5
	4 BHK	4

Wing - A

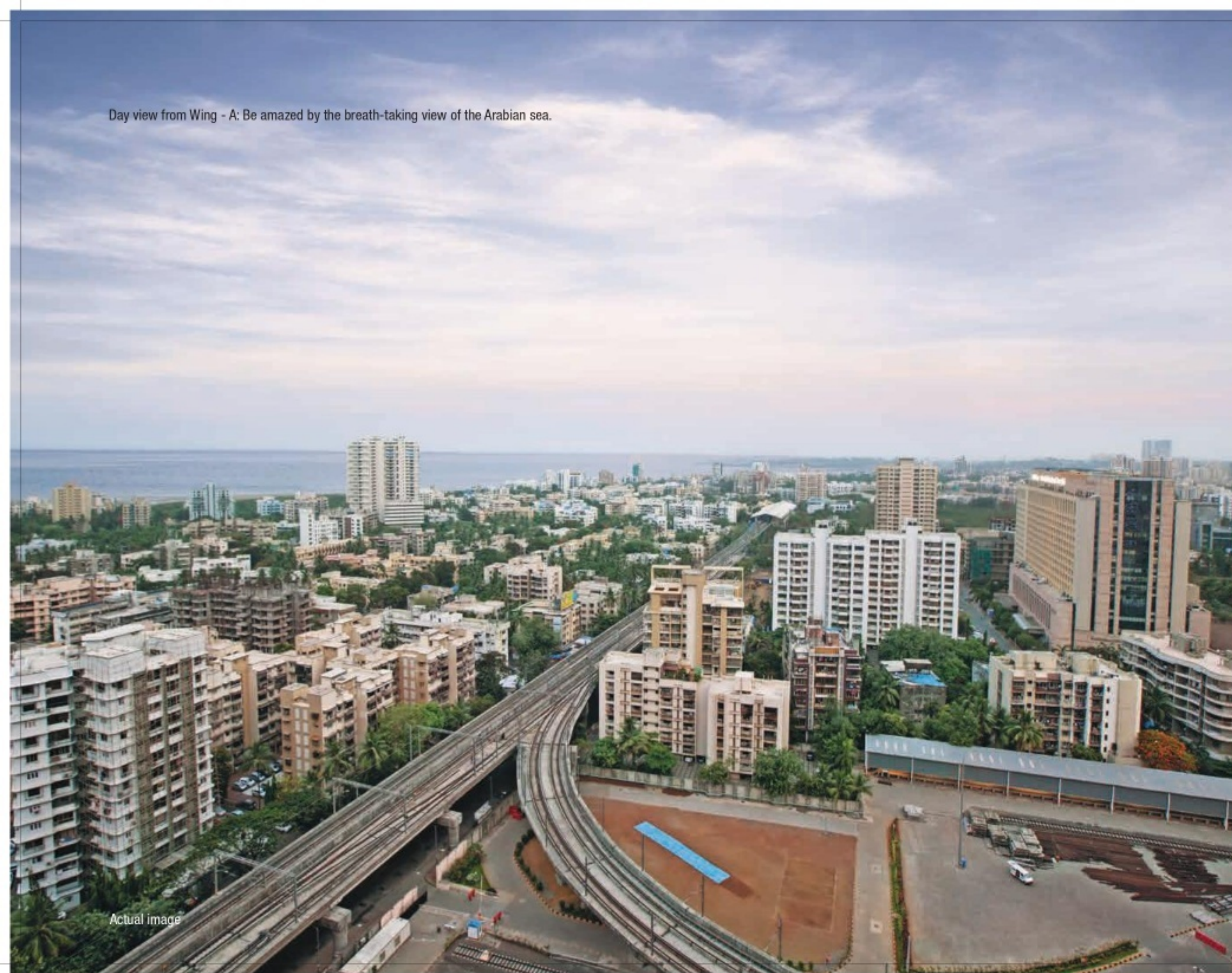
Choose between posh 3 and 3.5 BHK apartments from this exquisite tower. Each one has enough space to accommodate you and your imagination. They also come with a deck that allows you to bask in the beautiful view. Roomy, convenient and exceptionally well planned, that's just some of the things you can expect from Wing - A.



wing



Day view from Wing - A: Be amazed by the breath-taking view of the Arabian sea.



Actual image

Night view from Wing - A



Actual image



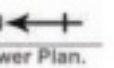
WING-A: TYPICAL FLOOR PLAN



3.5 BHK

RERA CARPET AREA	118.44 sq. mt.	1274.89 sq. ft.
DECK AREA	2.77 sq. mt.	29.82 sq. ft.

A1



Tower Plan.



3.5 BHK



RERA CARPET AREA	137.30 sq. mt.	1477.90 sq. ft.
------------------	----------------	-----------------

A2



3 BHK



RERA CARPET AREA	102.69 sq. mt.	1105.36 sq. ft.
------------------	----------------	-----------------

A3





RERA CARPET AREA	126.04 sq. mt.	1356.69 sq. ft.
------------------	----------------	-----------------

A4

3 BHK



Tower Plan.



RERA CARPET AREA	128.35 sq. mt.	1381.56 sq. ft.
DECK AREA	3.35 sq. mt.	36.06 sq. ft.

A5

3.5 BHK



Tower Plan.





RERA CARPET AREA	95.94 sq. mt.	1032.70 sq. ft.
DECK AREA	10.20 sq. mt.	109.79 sq. ft.

A6

3 BHK



RERA CARPET AREA	100.42 sq. mt.	1080.92 sq. ft.
DECK AREA	8.62 sq. mt.	92.79 sq. ft.

A7

3 BHK



Wing - B

From a cosy and luxurious 2 BHK to a palatial 4 BHK that's out of this world, Wing - B promises all this and much more. Step in and be swept away by the sheer brilliance of its meticulously planned spaces. The tower is also decked with 2.5, 3 and 3.5 BHK apartments that promise comfortable living like never before. If that's not enough, the deck in every apartment is sure to open up a whole new world for you.



Day view from Wing - B



Actual image

Night view from Wing - B: Enjoy the spectacular view of the Mumbai skyline.



Actual image



WING-B: TYPICAL FLOOR PLAN



RERA CARPET AREA	99.37 sq. mt.	1069.62 sq. ft.
DECK AREA	2.43 sq. mt.	26.16 sq. ft.

B1

3 BHK



Tower Plan.





RERA CARPET AREA	97.10 sq. mt.	1045.18 sq. ft.
------------------	---------------	-----------------

B2

2.5 BHK



Tower Plan.



RERA CARPET AREA	156.15 sq. mt.	1680.80 sq. ft.
DECK AREA	2.23 sq. mt.	24.00 sq. ft.

B3

4 BHK



Tower Plan.





RERA CARPET AREA	108.29 sq. mt.	1165.63 sq. ft.
DECK AREA	4.13 sq. mt.	44.46 sq. ft.

B4

3.5 BHK



RERA CARPET AREA	83.06 sq. mt.	894.06 sq. ft.
------------------	---------------	----------------

B5

2 BHK





RERA CARPET AREA	86.59 sq. mt.	932.05 sq. ft.
------------------	---------------	----------------

B6

2 BHK



RERA CARPET AREA	110.65 sq. mt.	1191.04 sq. ft.
DECK AREA	4.01 sq. mt.	43.16 sq. ft.

B7

3.5 BHK



N
Tower Plan.

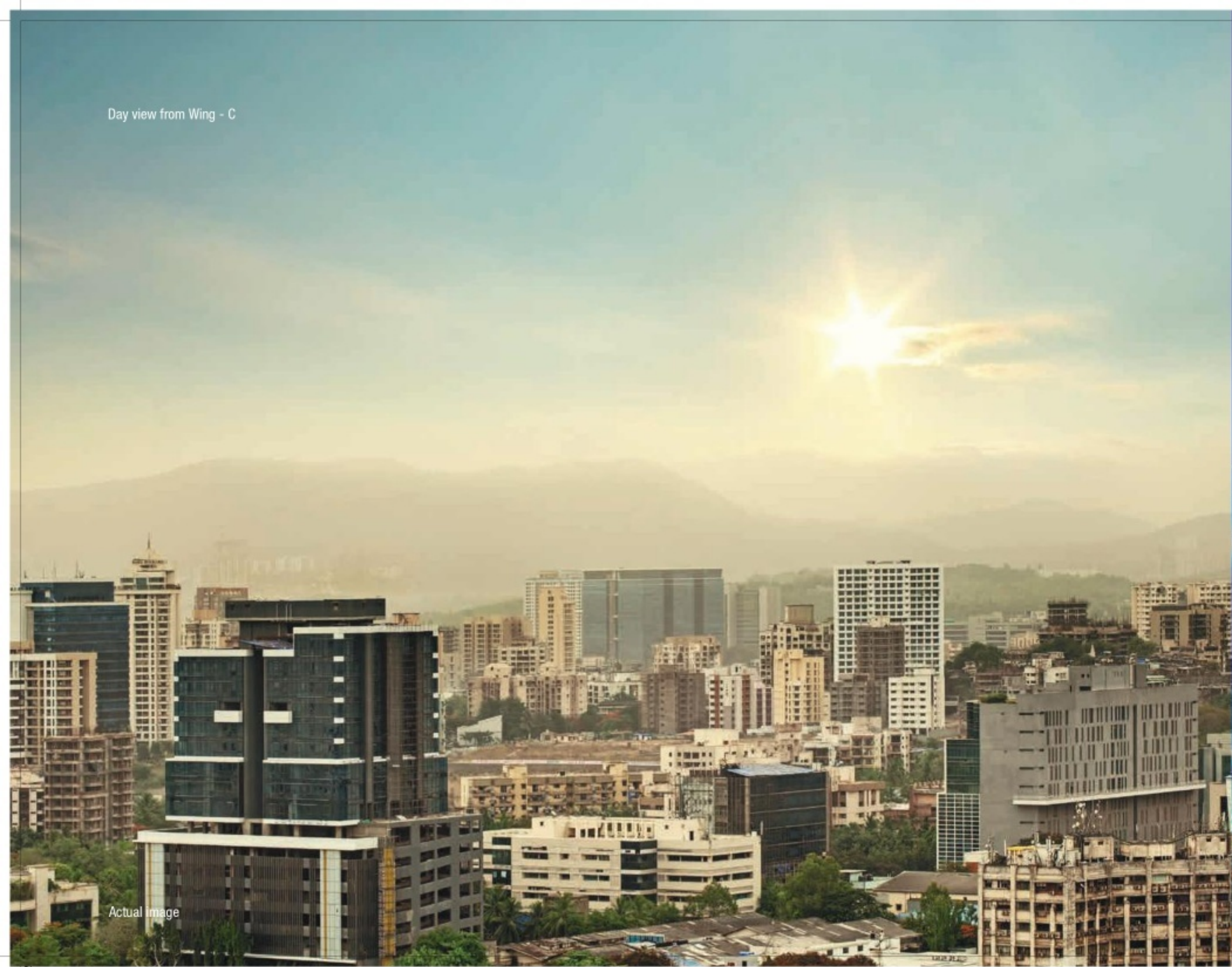
N
Tower Plan.

Wing - C

Whether you want a grand 4 BHK or an impressive 3 BHK abode, Wing - C is your ticket to a living experience beyond compare. Every apartment comes with a deck and is a true masterpiece in itself. Carefully crafted, thoughtful and incredible in every sense of the word, these apartments are sure to exceed all your expectations.



Day view from Wing - C

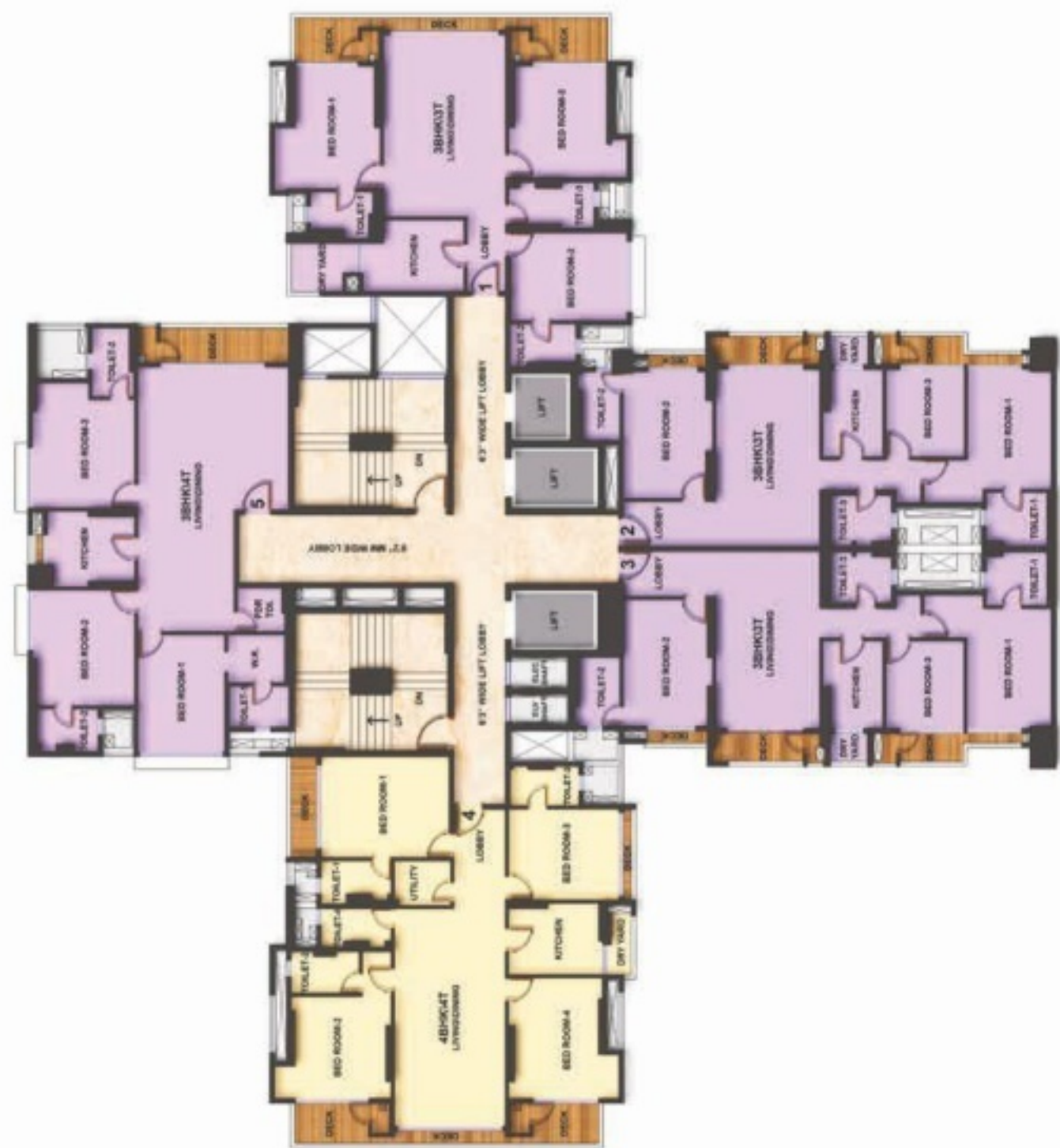


Actual Image

Night view from Wing - C: Let your imagination take off as the incredible view captivates you.



Actual Image



WING - C: TYPICAL FLOOR PLAN



RERA CARPET AREA	105.32 sq. mt.	1133.66 sq. ft.
DECK AREA	10.52 sq. mt.	113.24 sq. ft.
DRY YARD AREA	4.07 sq. mt.	43.81 sq. ft.

C1

3 BHK



Tower Plan.

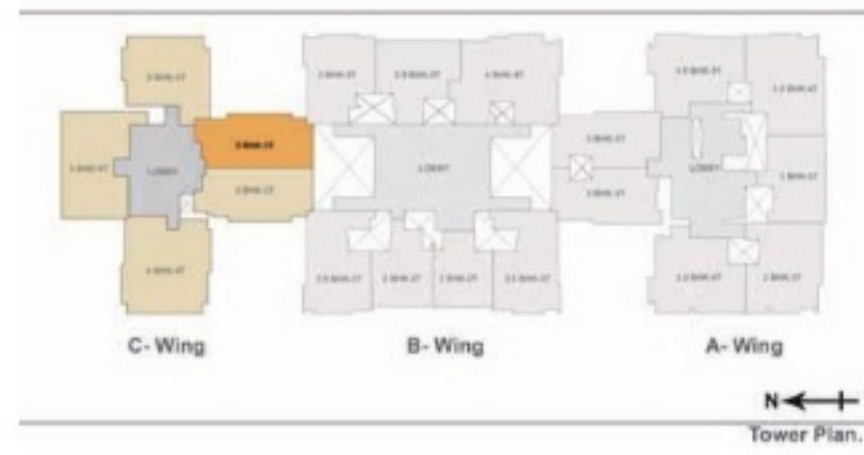




RERA CARPET AREA	99.01 sq. mt.	1065.74 sq. ft.
DECK AREA	7.62 sq. mt.	82.02 sq. ft.
DRY YARD AREA	1.43 sq. mt.	15.39 sq. ft.

C2

3 BHK



RERA CARPET AREA	99.27 sq. mt.	1068.54 sq. ft.
DECK AREA	7.64 sq. mt.	82.24 sq. ft.
DRY YARD AREA	1.43 sq. mt.	15.39 sq. ft.

C3

3 BHK

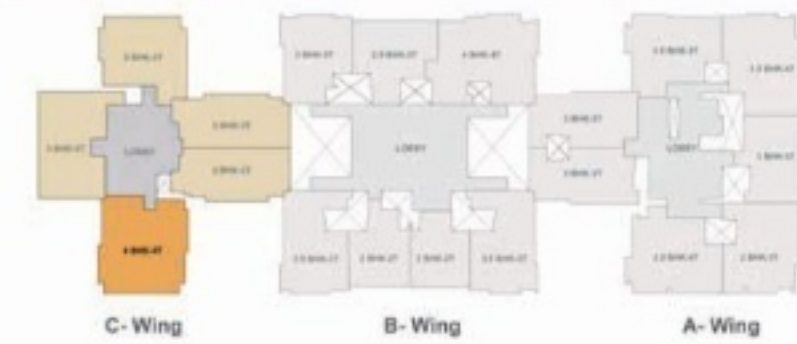




RERA CARPET AREA	135.11 sq. mt.	1454.32 sq. ft.
DECK AREA	14.21 sq. mt.	152.96 sq. ft.
DRY YARD AREA	1.91 sq. mt.	20.56 sq. ft.

C4

4 BHK



Tower Plan.



RERA CARPET AREA	118.56 sq. mt.	1276.18 sq. ft.
DECK AREA	6.34 sq. mt.	68.24 sq. ft.

C5

3 BHK



Tower Plan.



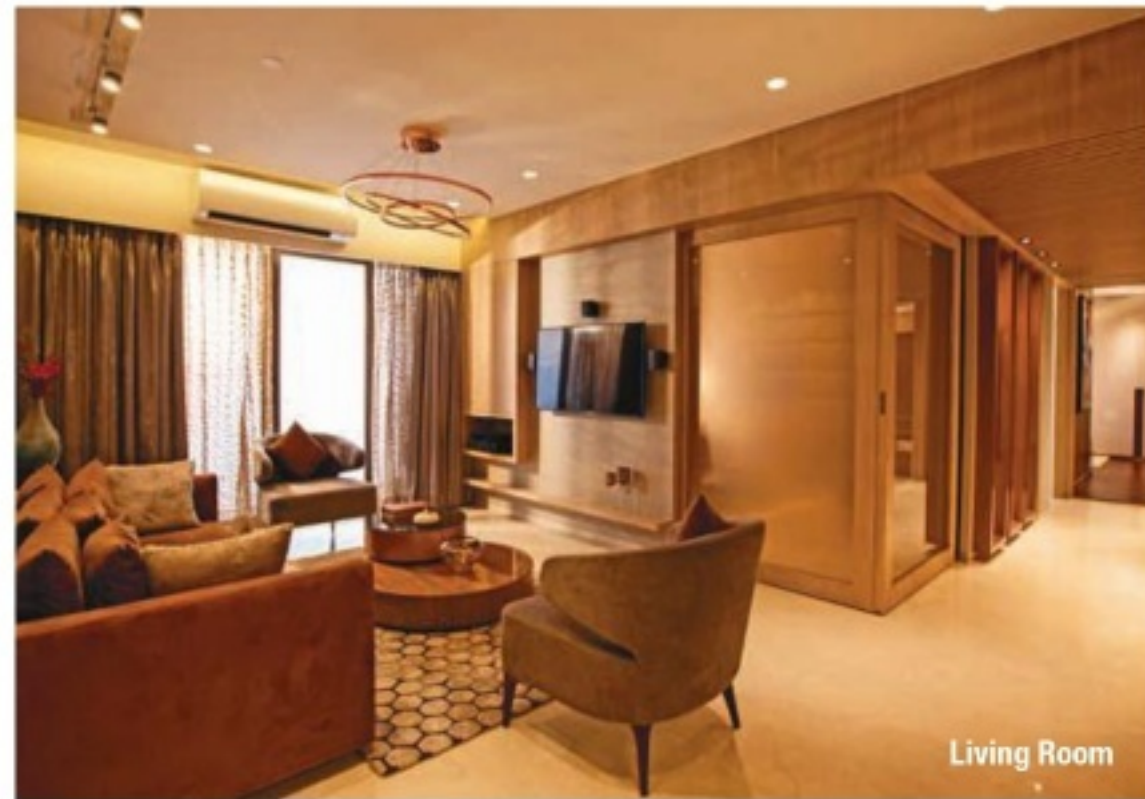
Tower Plan.

Tower Plan.

Beautiful on the inside.

Every little detail elevates the aesthetics of the beautifully crafted homes at Western Heights. From the Italian marble to the sleek sanitary fittings, each element goes a long way in making your abode an absolute marvel.





As is the exterior of the 3 towers at Western Heights, so is the interior. It's plush, splendidly built and a fine example of the optimum use of space. Walk in and escape to a world of your own.



Every part of your home is welcoming. It draws you in, lifts your spirits and lets you be yourself. Cosy yet spacious, opulent yet sensible, your home is the fine balance of all things good.

Actual show flat images

All furniture and fixtures shown in the images are for representation purposes only. They are not a part of the actual apartment.

Actual show flat images

All furniture and fixtures shown in the images are for representation purposes only. They are not a part of the actual apartment.



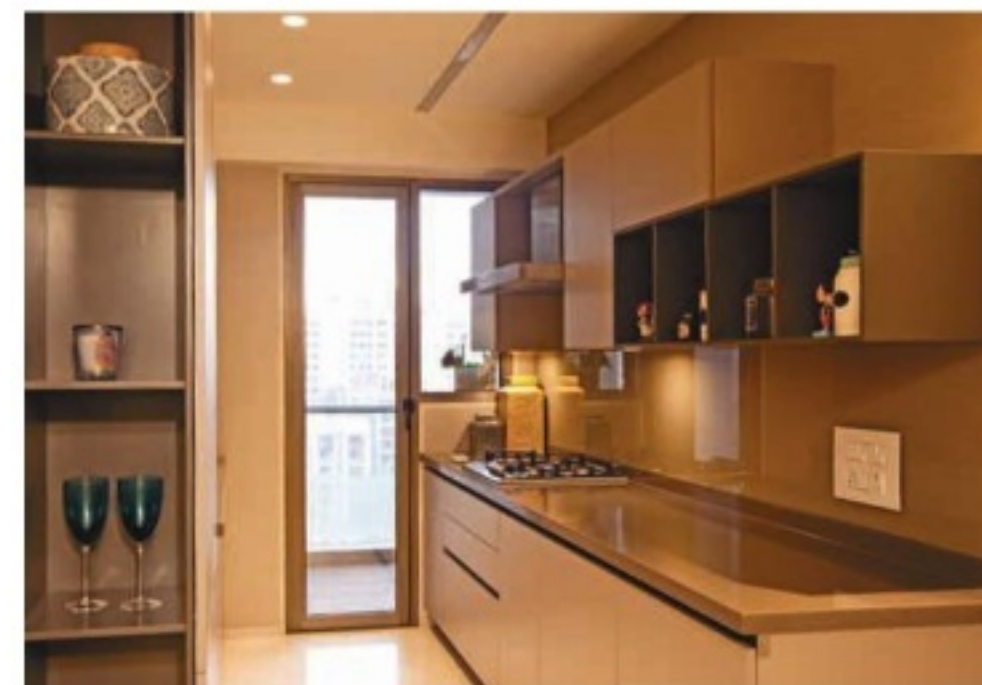
Living Room / Dining Room

Botticino Natural Italian Marble
 Provision for Split A/C
 Adequate electrical points including cable, internet provisionings etc.



Master Bedroom

Laminated Wooden Flooring



Kitchen

Vitrified Flooring by Somany
 2 1/2' Dado - Vitrified Tiles
 Stainless Steel Sink by Nirali
 Exhaust Fan
 Granite Platform



Other Bedrooms

Vitrified Flooring by Somany

Other Amenities

Passages:

- Italian Marble

Bathrooms:

- Anti-skid Vitrified Tiles by Kajaria & Somany
- Instant Geyser & Exhaust Fan
- CP Fittings by Grohe & Flush tanks by Geberit
- Sanitary Fittings by Kohler

Balcony:

- Anti-skid Vitrified Tiles by Kajaria
- Outlet & Electrical Point
- Glass Railing

Internal Doors and Windows:

- Laminated Flush Doors
- Door Hardware by Hafele
- Aluminium Sliding Windows
- Fire Rated Wooden Main Door with Veneer Finish

Security:

- Video Door Phone with Intercom

Safety:

- Water Sprinklers in every Apartment

Electricals:

- Modular Switches: Schneider, ELCB/MCB
- Adequate electrical points with 2 way switches in Bedrooms

Common Amenities

- Rain Water Harvest Tanks
- Sewage Treatment Plant
- Generator Back-up for Common Areas
- High Speed Toshiba Elevators
- Water Resistant External Texture Paint
- Fire Alarm
- Smoke Detectors
- Public Address System
- FTTH

Actual show flat images

All furniture and fixtures shown in the images are for representation purposes only. They are not a part of the actual apartment.

Actual show flat images

All furniture and fixtures shown in the images are for representation purposes only. They are not a part of the actual apartment.

Adani Group

Touching your lives, the Adani way.





Founded in 1988, the Adani Group is an \$11 billion conglomerate that employs over 10,400 people. The company's diverse portfolio includes Resources, Logistics, Energy, Agro, Financial Services, Real Estate, and Defense and Aerospace. The integrated model is well adapted to the infrastructure challenges of the emerging economies. Adani Group's growth and vision has always been in sync with the idea of Nation Building. We live in the same communities where we operate and take our responsibility towards contributing to the betterment of the society very seriously. Through Adani Foundation, we ensure development and progress is sustainable and inclusive; not just for the people living in these areas, but the environment on the whole. At Adani, we believe in delivering benefits that transcend our immediate stakeholders.

Resources



Agribusiness



Logistics



Energy



Adani Realty

Adani Realty, one of the youngest arms of the Adani Group, has delivered an aggregated 13 lac sq. mtrs. (13 million sq. ft.) of real estate in residential, commercial & social club across Mumbai, Ahmedabad, and Gurugram in a considerably short span of time. We are now developing an additional 13 lac sq. mtrs. (13 million sq. ft.), and we ranked 7th in the list of top real estate brands - PropEquity survey 2017-18. Our incredible delivery reputation coupled by our commitment to build meticulously crafted projects has made it possible for us to win over 30 awards in the realty space. It is no wonder that over 6,000 happy families have shown their trust in us and lifted us to the position of One of Asia's top 100 brands for the year 2017-18 & 2018-19 consecutively. This is just the beginning for us at Adani Realty, and with our foray into the Pune market, we're set to exceed our achievements and cross many more milestones. Come, be a part of our journey.



The photographs/artistic impressions contained herein are illustrative and used for indicative purpose only. This is purely conceptual and not legal offering. No warranty either expressly or impliedly given that the completed development of the project will comply in any degree with such artistic impression depicted herein.

Our Projects

Spread across Ahmedabad, Mumbai, Pune and Gurugram, the impressive projects by Adani Realty range from ultra-luxurious penthouses to smart and affordable homes.

Actual image



Shantigram
THE GOOD LIFE

Ahmedabad

Spread over 580+ acres, Shantigram is a meticulously planned integrated township that is set to change the face of real estate in Gujarat.

Actual image



The Belvedere
Golf and Country Club

Ahmedabad

The Belvedere Golf and Country Club

Spread over 100 acres, The Belvedere Golf and Country Club is one of India's largest private social clubs and was named the Best New 9 Hole Golf Course at the India Golf Expo, 2016. An infinity swimming pool, tennis courts and fine dine restaurants, all add to its splendour.

Artist's impressions



SAMBARA

Gurugram

Luxurious 3 & 4 BHK Villa floor concept

Gurugram's first neighbourhood, Samsara is located in the heart of Gurugram. It is a joint venture between Adani Realty & Brahma Group which promises an ecosystem of sustainable living amongst nature and a close-knit community.
RERA No.: HRERA No.: 207 of 2017 dated 15.08.2017
HRERA No.: 197 of 2017 dated 15.08.2017

Actual image



OYSTER GRANDÉ

Gurugram

3, 3.5, 4 and 4.5 BHK Apartments & 5 BHK Penthouses

Spread over 19 acres of lush greenery, Oyster Grandé comprises of 750 apartments across 9 towers and is endowed with best-in-class amenities.
RERA No.: HRERA No.: 37 of 2017 dated 10.08.2017
HRERA No.: 171 of 2017 dated 29.08.2017
HRERA No.: 170 of 2017 dated 29.08.2017

Actual image



AANGAN

Ahmedabad & Gurugram

1 and 2 BHK Apartments
Affordable Housing

The perfect blend of comfort and convenience, Aangan promises you smart spaces that help you stretch your imagination, not your budget.
Phase-1 O.C. Received

Artist's impressions



Atelier GREENS

Pune

2 | 2.5 | 3 BHK luxurious apartments

Located in Koregaon Park NX, Pune's most sought after residential neighbourhood, Atelier Greens is our first project in the city. It is enveloped by a vertical garden that adds beautiful shades of green to the façade, while over 20 amenities let you live each moment. Come live in the heartland of the city.

Artist's impressions



Monte South

Mumbai

2.5, 3.5 BHK and Combined Apartments

A joint venture with Marathon Realty, Monte South stands tall amidst the backdrop of South Mumbai. Designed with an Amazon forest themed landscape, it comes with a natural pond, pergola and a vanishing edge swimming pool.
RERA No.: P51900001936, P51800001779
P51800001681, P51800001585, P51900001346, P51800002618

Actual image



INSPIRE

Mumbai

Located in the heart of Mumbai-BKC, Inspire offers modern office spaces that do justice to its name. Ample parking, integrated BMS and top-notch safety and security features are just some of the things you can expect from this modern marvel.
RERA No.: P51800002219

Awards & Accolades

Our projects have been recognised the world over & have grabbed more than 30 awards.

