



Index

Foreword

Tribute

Life Reimagined

Welcome Home to FIMB

Architecture @ FIMB

Entrance Arch @ FIMB

Commune @ FIMB

Our Spaces

Water @ FIMB

Soil @ FIMB

Living Responsibly @ FIMB

Forest @ FIMB

Glossary of Trees @ FIMB

Masterplan @ FIMB

Project Images

Appendix: Forestation

Location Map

Contact

Foreword

Earthen Hues is a company born out of our passion.

Passion to improve our Earth.

Passion to put sustainability first.

Passion born out of a will to lead and influence change, towards a balanced living with nature.

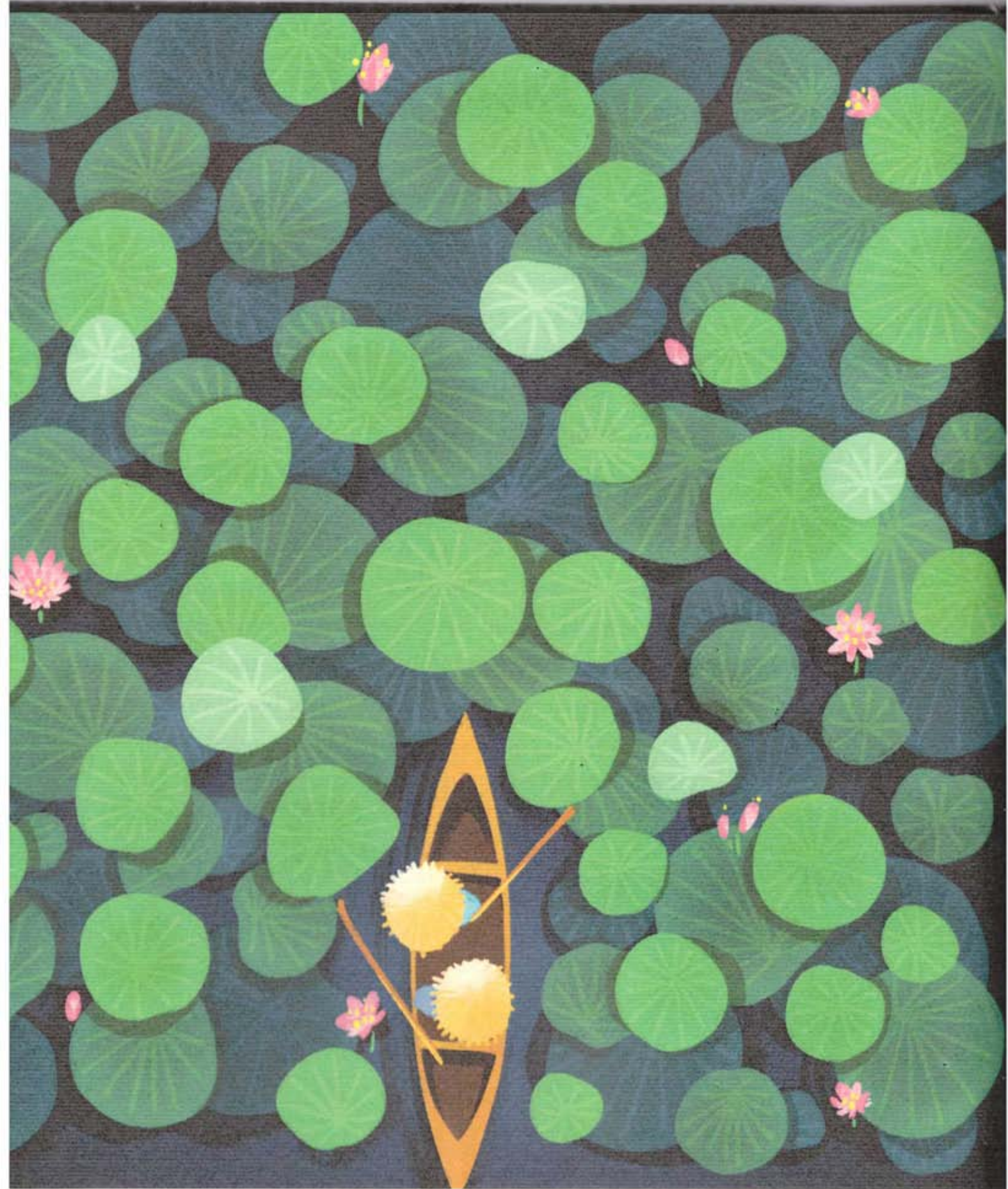
Earthen Hues proudly presents to you our premium sustainable living based real estate project in North of Bangalore.

FOREST IN MY BACKYARD.

We believe we all have a part to protect our earth. Sustainable living is not a choice. It's something we do every day even when no one's watching. Our projects are our humble tribute to mother earth. At earthen hues we take care of our soil, water & bio flora. We plant native forests. We build communes where like minded people who chose to tread the earth lightly come together.

"All know the way. But few actually walk it. Come lets walk hand in hand"

**EARTHEN
HUES**





This coffee table book is a tribute to the power of an individual
and what an individual can do to change the world.

*To the bold and the fearless
To the people who walked alone
To the believers and the doers
Who save the world one tree at a time!*



"The greatest threat to our planet is the belief that someone else will save it"

-Robert Swain

A Tribute:



Wangari Mathai

The first African woman to win a Nobel Peace Prize for her life work and planting more than 30 million trees in 30 years

Daripalli Ramaiah

Everyday of his life he would start his day on a bicycle in a small village in Reddipalle. Wherever he finds a barren patch, he dismounts and plants saplings. Single-handedly he has planted well over 10 million trees that come to one tree for every third resident of Telengana.



"I speak for the trees, for the trees have no Tongues."

-Dr. Seuss



Saalumarada Thimmakka

110 year old; she started her life as a child labourer at the age of 10 years. In her society she drew flak for being childless and even tried committing suicide when she was 40 years old. She along with her husband turned to planting trees and nurturing as her own children. She planted around 400 Giant Banyan trees on a 4 km stretch along the highway from Hulkul to Kudur (Karnataka) and about 8000 other trees. She received Padmashree for her efforts in 2019.

Jadav Payeng

The Forest man of India. Jadav began planting trees on a barren sandbar of the river Brahmaputra, turning it into a forest, now called Molai Forest after him. The forest is spread across 1,360 acres of land and now houses Bengal tiger, Indian Rhinoceros, deer, rabbit, monkeys and several bird species. He himself lives in a small hut with his 3 children and wife in the forest. He was awarded the Padmashree in 2015.



"The world is changed by your example and not your opinion."

-Paulo Coelho



Radhakrishnan Nair

Mr. RK Nair has planted 40 forests with 500,000 trees across seven states, including Rajasthan, Gujarat, Bengal, and Chhattisgarh using the Miyawaki technique; He was awarded a doctorate from International Peace University of Germany.

Akira Miyawaki

A giant among mankind, Akira Miyawaki, a botanist and environmental warrior, was involved in the planting of over 40 million native trees, to contribute to international forest regeneration. His methodology promotes regeneration of native forest, mimicking closely "old world forests" which are dense 4 layered forests, thereby helping speed forest cycle.



"I wondered why somebody didn't do something about that, then I realised I am somebody"
-Libby Tomlin



M. Yoganathan

The bus conductor-turned-eco activist from Chennai who has planted around one lakh tree saplings across Tamil Nadu.

Kallen Pokkudan

The late environmental activist from Kerala is known as the protector of mangrove forests and is reported to have planted over one lakh mangrove plants all over the state.



"People who are crazy enough to think they can change the world are the ones who do"

-Steve Jobs





Life Reimagined

If I had the power to imagine and Reimagine...

I would.

*Imagine living in a community where houses are
surrounded by forests and trees.*

You open your back door and you are in a forest.

*Imagine seeing your children growing up with
the music of cicadas and chirping birds, chasing
dragonflies and butterflies.*

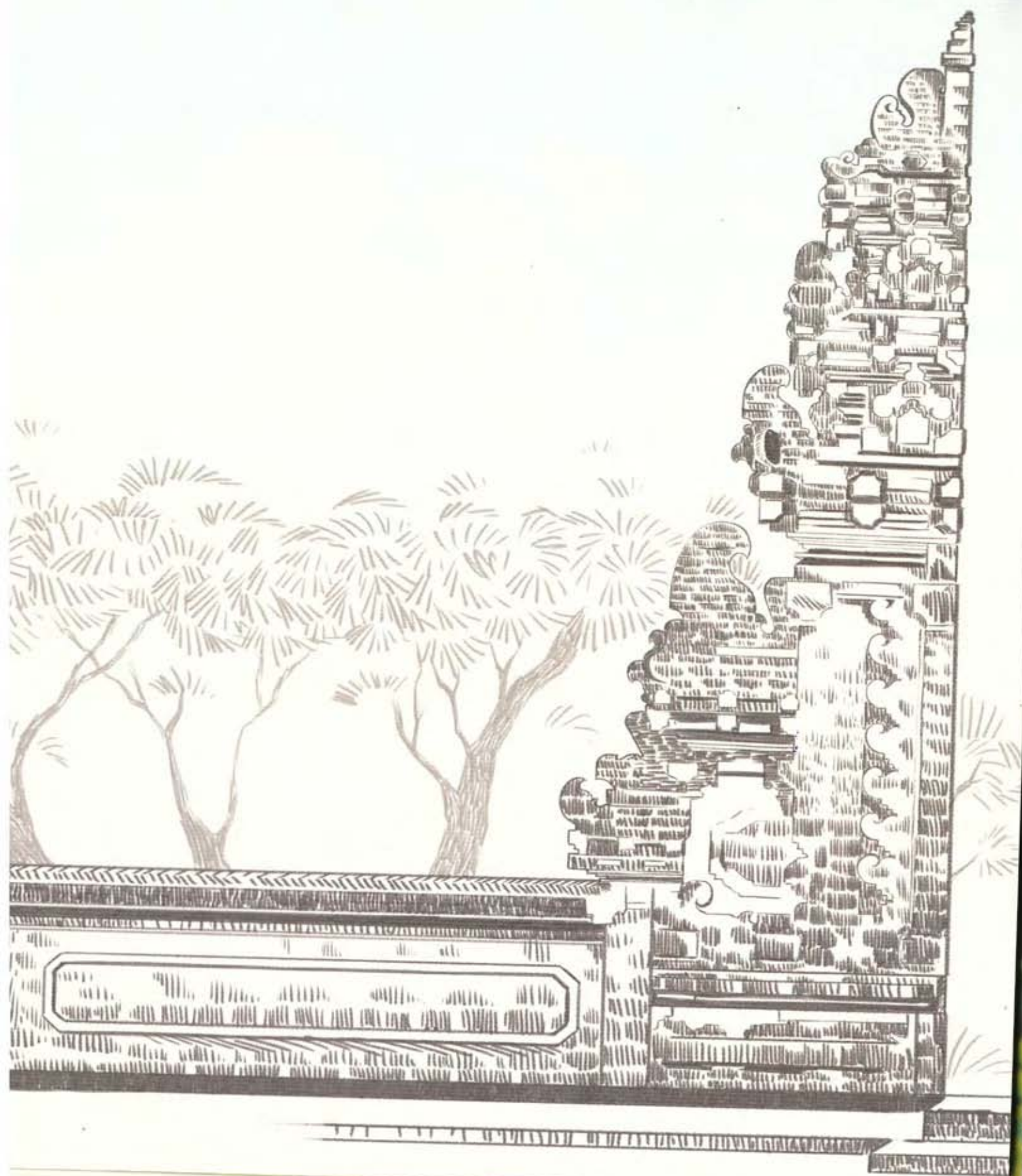
*Imagine breathing the fresh and fragrant air
infused by the wild grass and forest trees.*

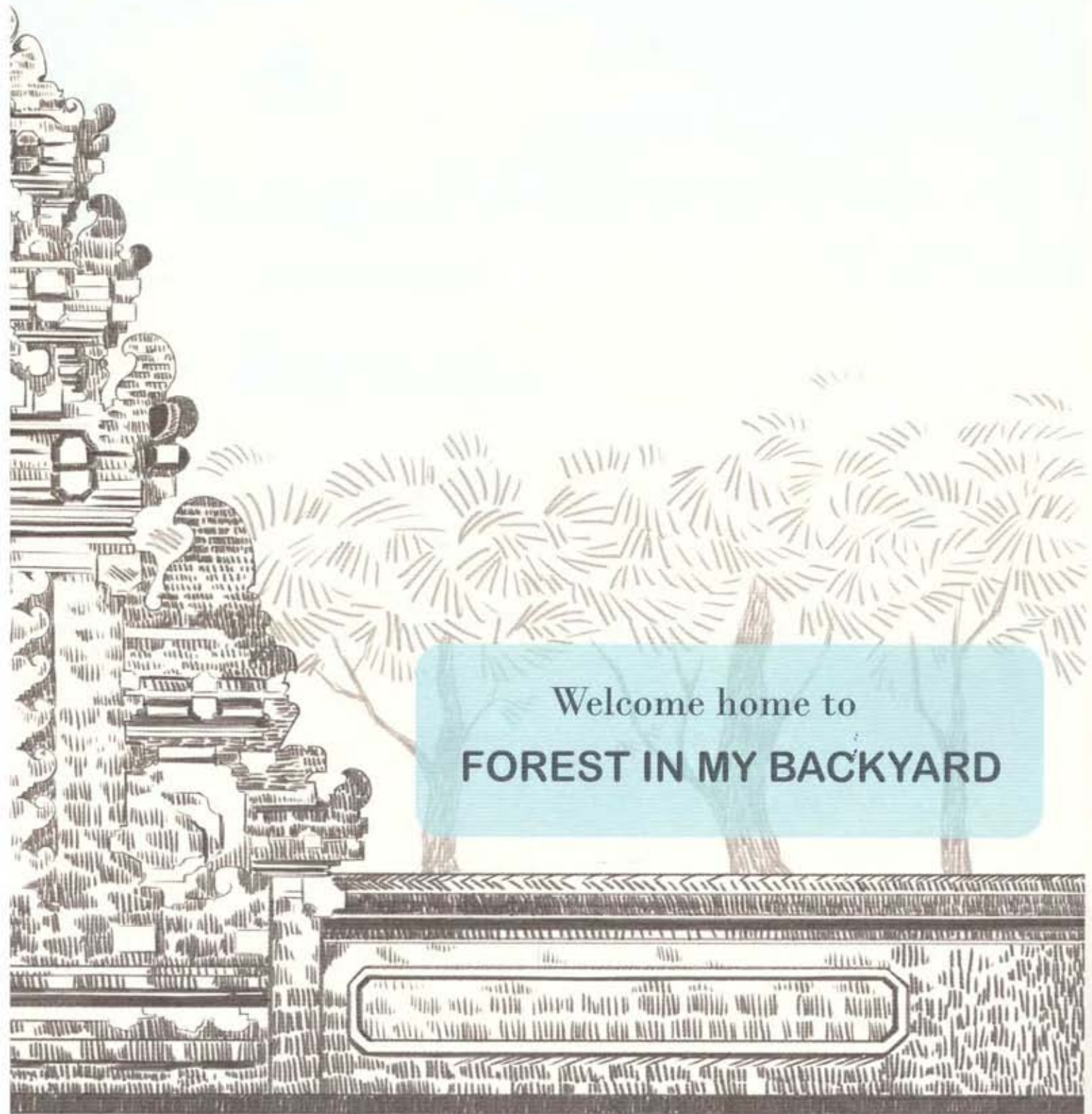
*Imagine living in a place where all you see is
the lushness of life forms, tree canopies
and houses hidden among them.*

Does such a place exist?

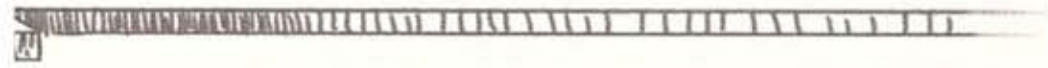
"Only from the heart can you touch the sky"

-Rumi





Welcome home to
FOREST IN MY BACKYARD



Architecture @ FIMB



*FIMB is inspired by the beauty of Balinese architecture.
Traditional stone carvings, use of sustainable material
Designed for earthy and quality living.*

*The little details where everything has a meaning.
A sensible architecture which allows an exchange with the natural environment.*

Life at FIMB will be a breeze.







*Entrance Arch @ FIMB -
Inspired by Gates of Heaven, Bali*



"Look deep into nature, and then you will understand everything better."

- Albert Einstein

COMMUNE @ FIMB

My ME space recharges me, it deepens me and nurtures me



*WE Spaces help us form connections, new ideas,
come together as a community and celebrate living*

ur Spaces



ME Spaces

- B** The Peepal court
- B** The Bamboo Grove
- B** Firangpani
- F** Jogging track
- B** Lotus courtyard
- B** Ashok Vatika
- B** The book lovers hideout
- F** Walkways
- F** Cycling path



WE Spaces

- F** Kids Fitness Park
- F** Cricket Court
- F** Volleyball Court
- F** Basketball Court
- F** Badminton Court
- C** The clubhouse
- B** Sabha @peacock court
- B** The grasslands

B Botaniques

F Fitness

C The clubhouse



Water @ FIMB

At the Forest in my Backyard, we think differently. We want to conserve and sustain the cycle of life.

By speaking to the best brains and sustainable warriors we have realized that sustainability is not a tick box with a rain water harvesting pit or following minimal guidelines prescribed by development authorities.

Hence we have gone beyond the minimum as our aspiration is 'MAXIMUM' on sustainability.

Our rain water harvesting principles are inspired by "Bhungroo" (means straw) which is an Indian innovation that has received global recognition at the UN climate change conference; Bhungroo (in Gujarati: straw or hollow pipe) filters, injects and stores storm water subsoil. It has 17 technical designs for a variety of agro-climatic zones and can be customized based on 27 variables. The technique maximises water retention and penetration in the sub soil layer.

This we know is great, but we don't stop here the minutest detail of how land topography and gradient can be channelized so that the forest creates the suction and enables the cycle of life 'Water'.



"The water cycle & the life cycle are one."

Soil @FIMB

life giving; It sustains us, captures
provides a home to billions of
ms.

often we are taught to think of it as

result 1/3 rd of world's soil is
dead or dead, and the remaining 2/3 rd
Earth's soil is going through the
degradation.

only hope for our planet is if we pledge
to protect this cycle.

At FIMB we treat Earth with respect and
support Save the Soil Foundation.

Our landscaping and foresting techniques are
built on rigorous experience of working with
nature.

Composting organic wastes, dry leaves and
using sustainable landscape practices.

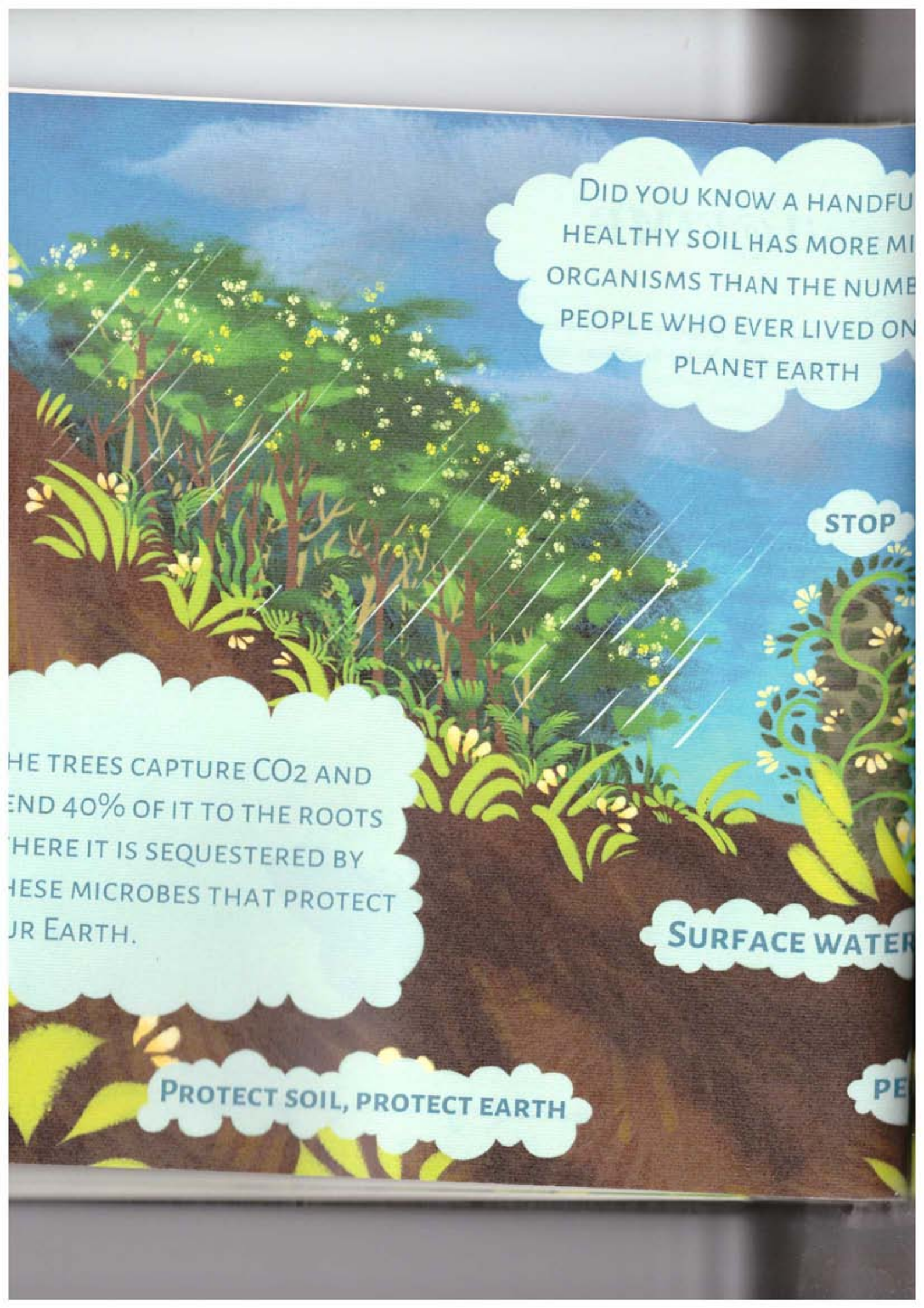
Our policy is 0% Chemicals, Pesticides and
chemical fertilizers.

Let's save our Earth, let's protect our soil.



"A nation that destroys its soil, destroys itself."

-FDR



DID YOU KNOW A HANDFUL
HEALTHY SOIL HAS MORE MICROBES
ORGANISMS THAN THE NUMBER OF
PEOPLE WHO EVER LIVED ON
PLANET EARTH

STOP

THE TREES CAPTURE CO₂ AND
SEND 40% OF IT TO THE ROOTS
WHERE IT IS SEQUESTERED BY
THESE MICROBES THAT PROTECT
OUR EARTH.

SURFACE WATER

PROTECT SOIL, PROTECT EARTH

PE

PRO-ENVIRONMENT

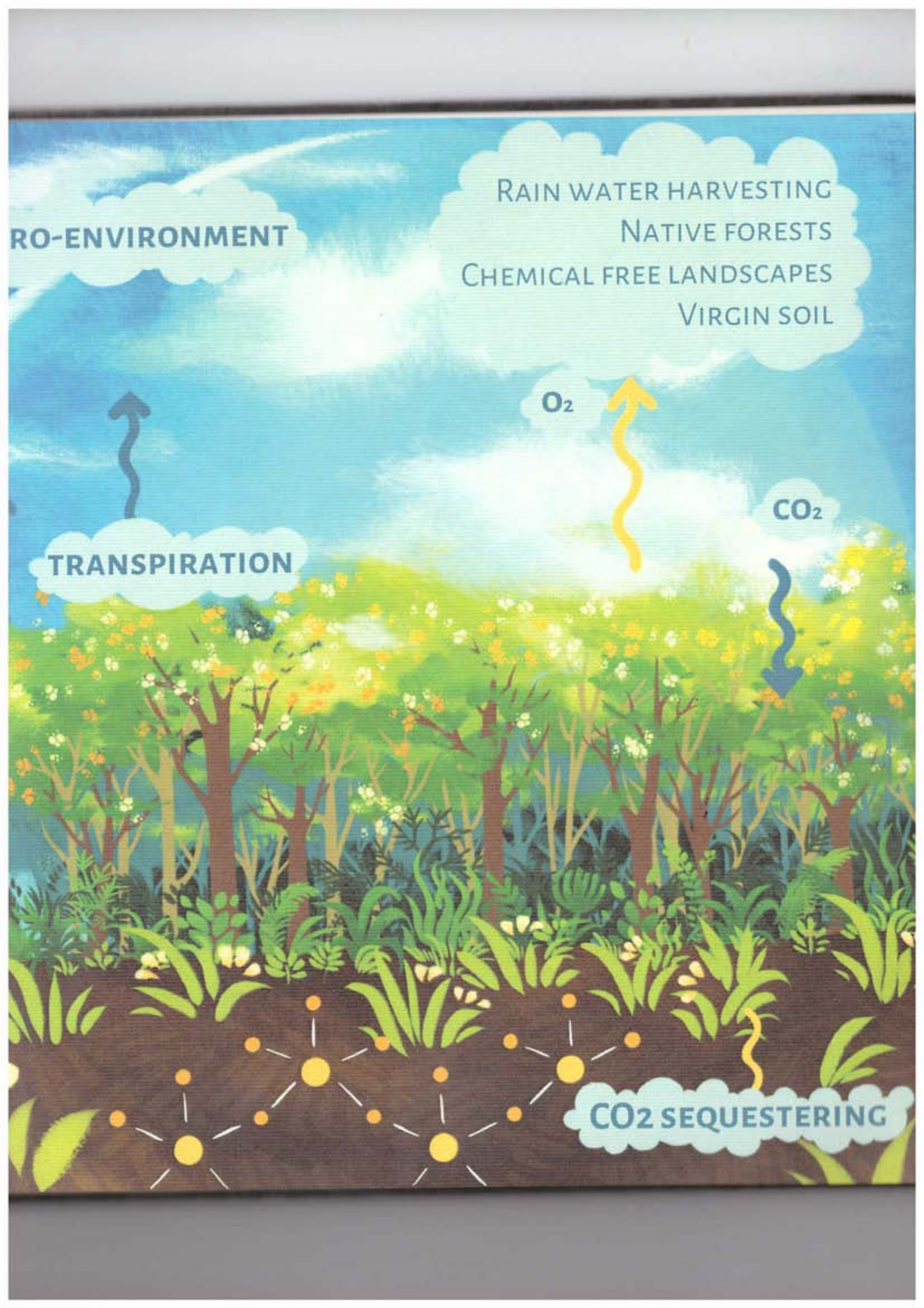
RAIN WATER HARVESTING
NATIVE FORESTS
CHEMICAL FREE LANDSCAPES
VIRGIN SOIL

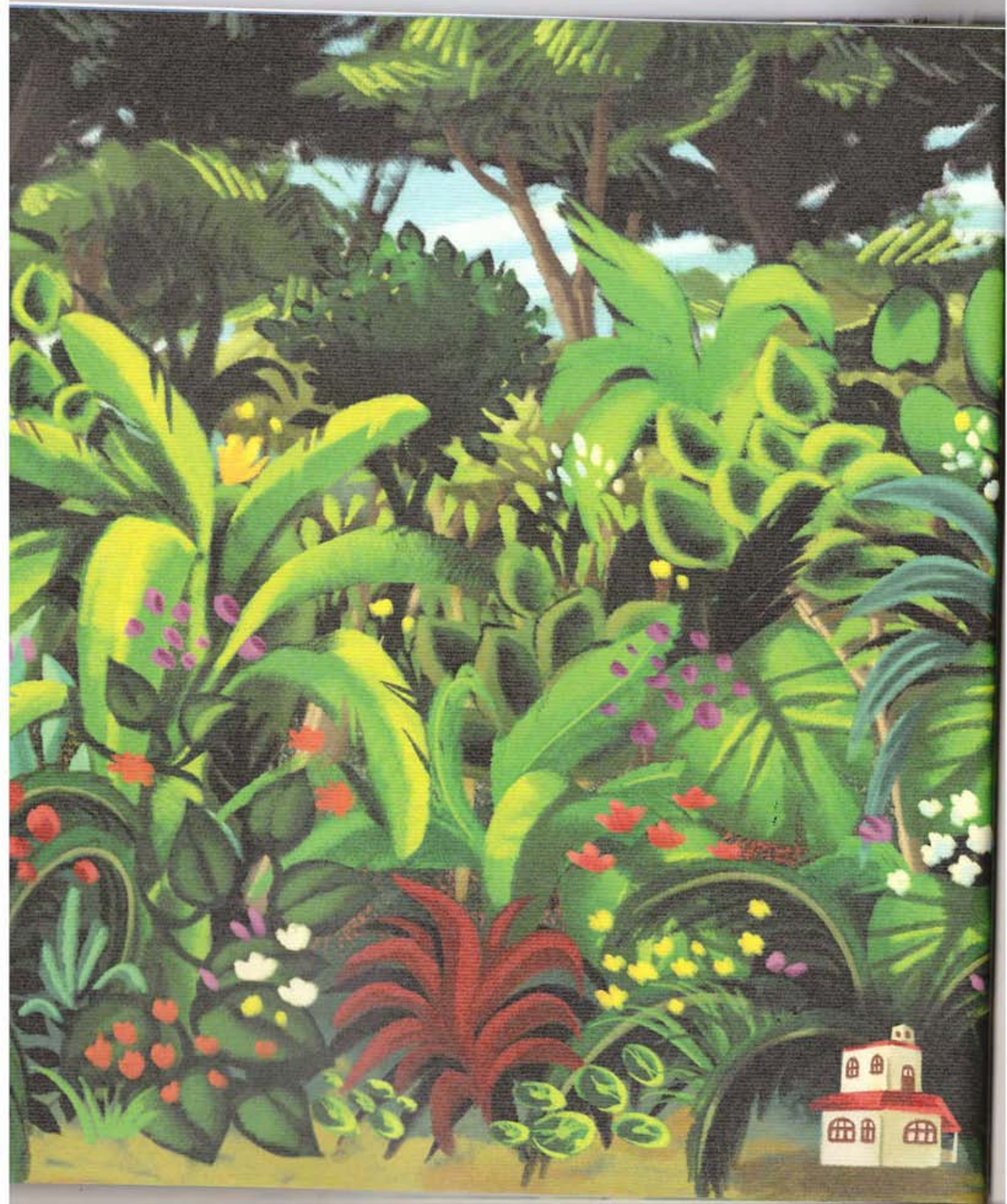
TRANSPIRATION

O₂

CO₂

CO₂ SEQUESTERING





Forest @FIMB

*With a forest in your backyard,
sprawling lush tropical landscapes swaying in the breeze,
creating a light and shadow play.*

*Living at FIMB will be how life is supposed to be lived,
amidst nature.*

Our Forestation is inspired by the Japanese Botanist Akiro Miyawaki who is one of the most inspirational green warrior of our planet. Miyawaki technique is a proven and scientific technique of developing "old growth" forest or forest Primeval of indigenous trees species. Typically if we let nature run its course, an old growth forest can take anywhere between 500 to 1200 years, if left undisturbed. The old growth forest has unique flora, fauna, distribution, soil physiology and biome.

These forests are typified with 4 layers; with indigenous tall, sky reaching varieties called the canopy trees followed by large trees, sub trees and shrubs in unique ratio. Reformulated soil becomes the foundation. The result is a dense, impenetrable forest which grows 10X faster than normally planted trees.

Imagine Living in a 100 year forest in 10 years from now.



*the little things that citizens do. That's what will make the difference. My little thing
is planting trees."*

- Wangari Mathai



Beete
Baheda
Baenga Mara
Kolugida
Mango
Hebbalasu
Kari, Kari-bevinagi-
da
Nirgudi
Nallarojanamu
Mandaara hoo
Konda-mavu
Bluebell Barleria
Muragala

Beete
Baheda
Baenga Mara
Kolugida
Mango
Hebbalasu
Kari, Kari-bevinagida
Nirgudi
Nallarojanamu
Mandaara hoo
Konda-mavu
Bluebell Barleria
Muragala

Gulamaavu
Araka
Tundu, tun
White Dhup
Abbolige
Kadu malige
Ankolamara
Vana malige
Lakoocha
Malige
Aduthodagidda
Halivana, Pangar
Ane golaganji

Persea macrantha
Calotropis gigantea
Toona Ciliata
Vateria indica
Crossandra
Jasminum malabaricum
Alangium salvifolium
J. calophyllum
Artocarpus lakoocha
J. rigidum
Gendarussa vulgaris
Erythrina stricta
Adenanthera pavonina



"The best time to plant a tree is 20 years ago. The second best time is now."

Guggul dhup
Mullumuttaga
Arabian Jasmine
Illupa, Ippa
Amaltas
Arjuna
Kaval
Amtalakaayi, Ritha
Red Silk
Shivan
Malabar Nut
Kaladri, Nilavahi
Devajarige

Ailanthus triphyssa
Aphanamixis
J. Sambac
Madhuca latifolia
Cassia fistula
Terminalia arjuna
Careya arborea
Sapindus laurifolius

Gmelina arborea
Adhatoda zeylanica
Holoptelea integrifolia
Garcinia Xanthochymus



Goni-Mara
Atti, Rumadi
Ranjal
Jamun
Punnaga/Suran
Pongam
Tattuna
Krishna Siris
Parijatak, Harsingar
Indian Wormwood
Muttuga
Banni

Ficus mysorensis
Ficus racemosa
Mimusops elengi

Pongamia pinnata
Oroxylum indicum
Albizzia amara
Nyctanthes arbor-tristis
Artemisia nilagirica
Butea monosperma
Acacia ferruginea

"He who plants trees loves others besides himself."

-Thomas Fuller



Contact

Earthen Hues And Estates Pvt Ltd
359/95, 7th cross 1st Block,
Jayanagar
Bangalore- 560011

E-mail: sales@earthenhues.net

www.earthenhues.net

Tel: +91767663011