

ATOP THE WORLD,
OWN A HOUSE
BEYOND YOUR IMAGINATION.



 aaradhya | one
AMAR MAHAL, CHEMBUR

aaradhya | one
Your Dream Abode



Aaradhya One embodies "Flight of Success"

This elegant project offers cutting edge,
green & pure living with a choice of
2 & 3 Bedroom premium apartments across
its 14 storey tower. Here with the rising sun,
rises the ray of hope which will nurture your
lifestyle in the most efficient way.

Aaradhya One is much more than a home;
it is an abode to your dreams.



- Rooftop Gymnasium with an unhindered infinite view & state of the art facility
- Yoga pavilion



- Multi-purpose sport arena




- Indoor Gaming Space



- Senior Citizens Relaxation & Children Play Area
- Acupressure enabled walking tracks



- Lush green landscaped theme gardens
- Well crafted joggers track

A close-up, profile view of a woman with long brown hair, looking out a window. Her hand is visible in the foreground, with a ring on her finger. A butterfly is perched on the window pane. The background is a bright, blurred outdoor scene.

INDULGE IN AMENITIES THAT ADDS LIFE TO YOUR LIFE

INTERNAL AMENITIES

- *Floor to Floor height 10'6"*
- *Heavy section anodized double glazed sliding window*
- *Vitrified flooring in all the rooms*
- *Concealed copper wiring*
- *Granite kitchen platform with S.S. Sink & Service platform*
- *Additional electric points for Microwave, Mixture, Water purifier & Toaster etc.*
- *Legrand High quality electrical modular switch*
- *High quality CP fitting of Jaguar & Hindware sanitary ware*

SPECIAL AMENITIES

- *L Shape windows in majority of the apartments*
- *Strategically designed passage free planning*
- *Apartments Designed as per vastu*
- *Precisely designed apartments enabled with cross ventilation mechanism*
- *Design allowing abundant daylight & wind flow in each of the apartments*



GIVE YOURSELF AN ACTIVE CONNECTION WITH OUR AMENITIES

EXTERNAL AMENITIES

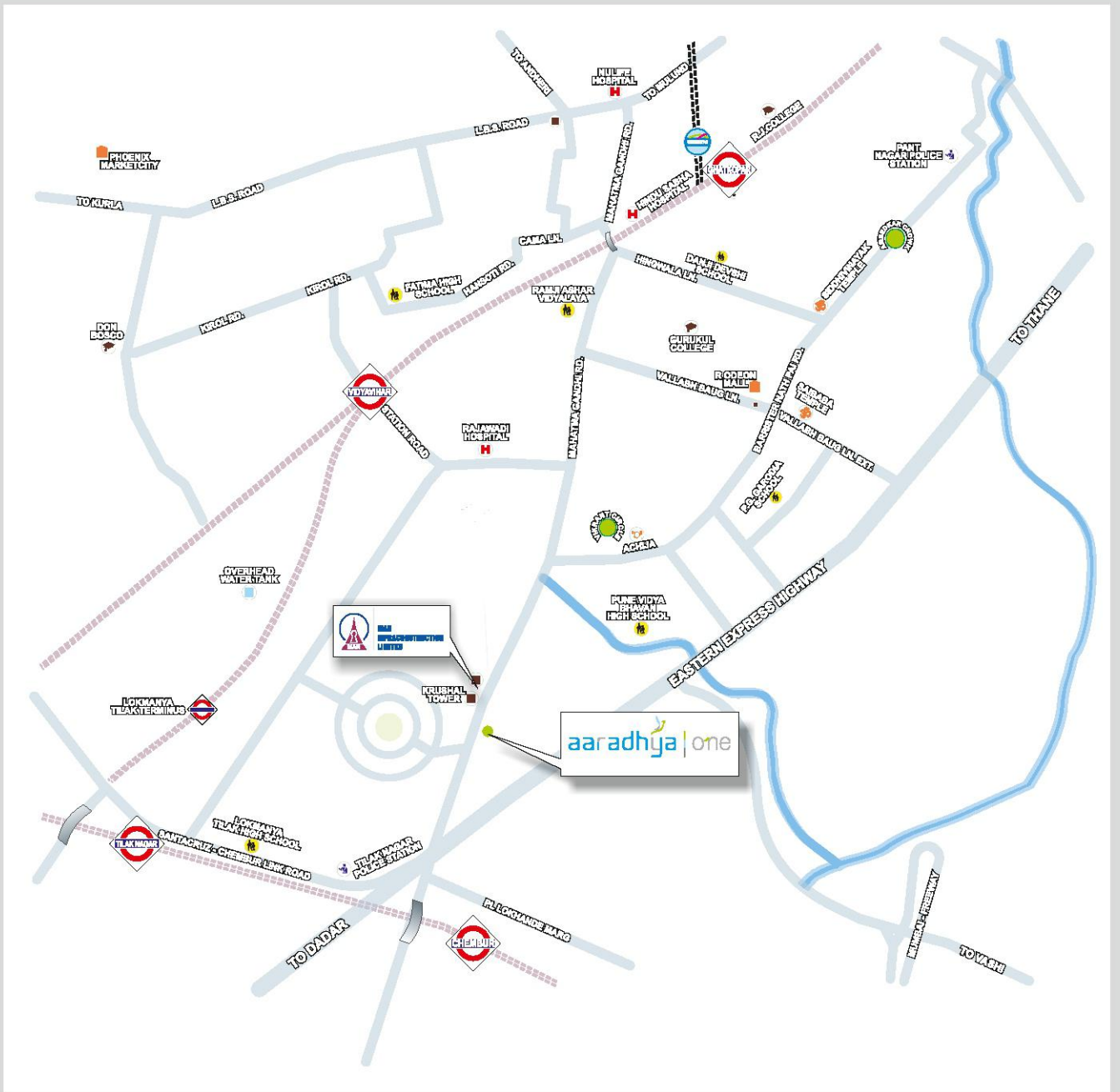
- *Decorative compound wall*
- *Power backup generator*
- *Schindler high speed elevators*
- *Spacious podium parking*
- *Solar power system*

4- TIER SECURITY SYSTEM

- *Fire protection system as per CFO norms*
- *Water sprinklers system*
- *CCTV surveillance and intercom system*

GENERAL AMENITIES

- *Majestic entrance lobby with italian marble flooring*
- *Earthquake resistant structure*
- *Rain water harvesting system*
- *Rooftop high-tech gymnasium*
- *Landscape garden with multi purpose sport arena*



CONNECT WHERE THE WORLD LOOKS UP TO



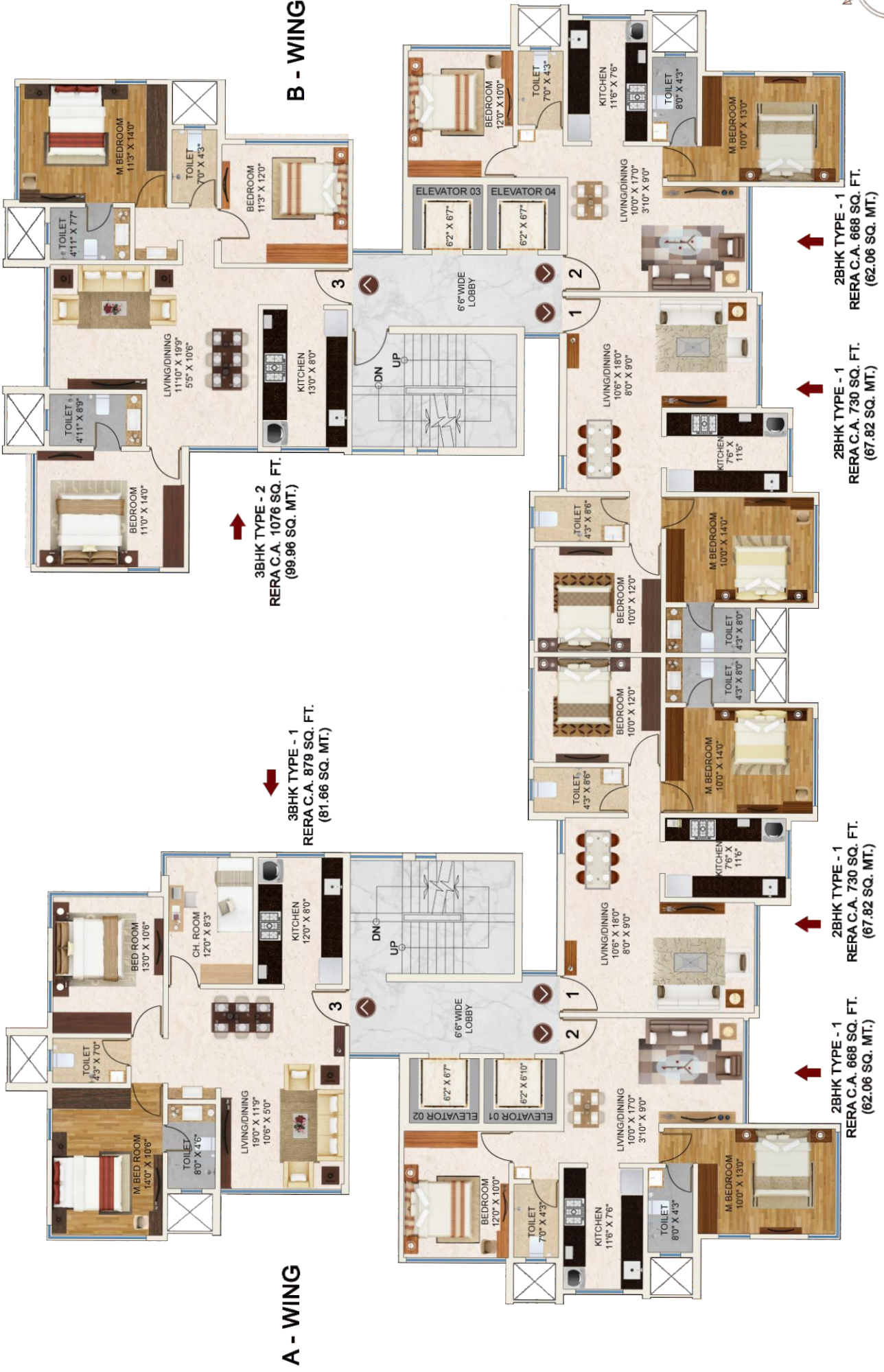
Site Address Aaradhya One, Amar Mahal, G.M. Road, Pestom Sagar Road No. 1, Chembur West, Mumbai 400089.

☎ 93220 93220 | W: www.miclgroup.in

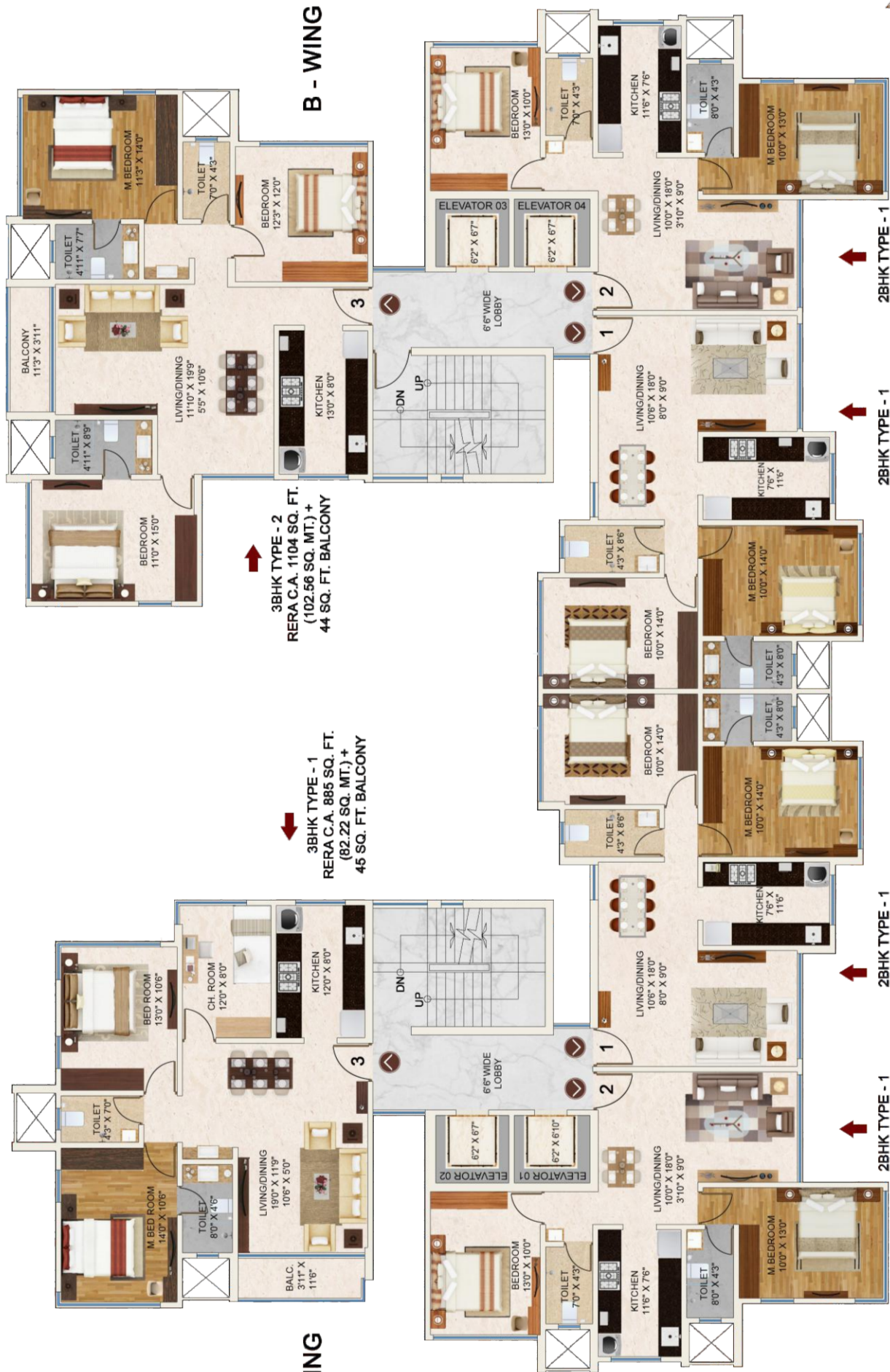
MahaRERA Registration No. P51800000333 / www.maharera.mahaonline.gov.in

GROUND FLOOR AMENITY AREA





**TYPICAL FLOOR PLAN
3RD TO 12TH FLOOR**



B - WING

A - WING

3BHK TYPE - 2
RERA C.A. 1104 SQ. FT.
(102.56 SQ. MT.) +
44 SQ. FT. BALCONY

3BHK TYPE - 1
RERA C.A. 885 SQ. FT.
(82.22 SQ. MT.) +
45 SQ. FT. BALCONY

2BHK TYPE - 1
RERA C.A. 689 SQ. FT.
(64.00 SQ. MT.)

2BHK TYPE - 1
RERA C.A. 750 SQ. FT.
(69.68 SQ. MT.)

2BHK TYPE - 1
RERA C.A. 750 SQ. FT.
(69.68 SQ. MT.)

2BHK TYPE - 1
RERA C.A. 689 SQ. FT.
(64.00 SQ. MT.)

13TH FLOOR PLAN

