

RERA Reg. No. : UPRERAPRJ149247

Website : www.up-rera.in



ATTALIKA

RAMPRASTHA GREENS, VAISHALI



RAMPRASTHA
REAL ESTATE



RAMPRASTHA
REAL ESTATE

Commitment is an act, not a word.

At Ramprastha Real Estate we believe action speaks louder than words. Ramprastha Greens is being developed at record speed and our commitment to project excellence is what drives us forward. But, above all, our commitment transforms a promise into reality.





RAMPRASTHA
REAL ESTATE

If it's Beautiful, It's Ramprastha Attalika

'Attalika' in Sanskrit precisely means— 'the palace in the sky'. That's exactly what we have in store for you when you choose to live at our luxury residences.

Every residence at Attalika offers a panoramic and uncluttered view of Ramprastha Greens. Bring your family to a home that is sure to elevate your lifestyle and fill you with life. Welcome to Attalika – your very own modern home with a combination of classic elegance and comfy amenities.





Attalika is the latest under construction project in Ramprastha Greens by Ramprastha Real Estate. Attalika literally means "the palace in the sky" and our driving force for creating Attalika has been **"Thoughtful Is Beautiful"**. Towers with limited and exclusive apartments have uninterrupted panoramic views that mesmerize, an overload of fresh air from the sprawling landscape and amenities that give you an enviable lifestyle.

Attalika's location is prime in its entirety, from connectivity and a breathtaking point of view, everything is perfect and guaranteed to make it a blissful living experience for the select few. The best-in-class architects and engineers are working 24X7 as per best-in-class standards to bring our vision to reality. Welcome to Attalika where one can experience and live a luxurious as well as peaceful life that you have always craved for.

Welcome to Attalika

Built Beautiful



A Lap of Luxury



World Class Gymnasium

A fully equipped gym with state-of-the-art equipment is available for your daily health ventures.



Kids Play Area

With a designated area for swings and slides that are all matched in colorful vibes, children can have a stimulating and fun time.

Recreational Club House

Unwind in some leisure time with your friends and family by participating in various types of games and enjoying delectable snacks.



Multi-Purpose Hall

A large and versatile venue is available for those special occasions. Its open layout makes it suitable for a wide variety of events.



Jogging Track

Take in the sights and smells of nature as you stroll. Running tracks and trails are available to all residents, whether they want to sprint or jog.



Lawn Tennis Court

Strike up a great time with people of all ages across a standard size tennis court. It's suitable for both pairs or solo competition.



Private Theatre

Be entertained in a theatrical audio-visual experience. This is a personalized space to enjoy movies and spend some quality time.



Basketball Court

An aesthetic basketball court for some light-hearted physical activity and recreation. Play with your friends and family.



3-Tier Security

Guards are available at the main guard stations, as well as the tower lobby area and are supported by an extensive CCTV surveillance system.



All-Weather Swimming Pool

Refresh in an all-weather swimming pool. Users may enjoy the water at any time of the year thanks to the facility's temperature control systems.



CLUB FLOOR PLAN (TERRACE LVL)

* SITE LAYOUT PLAN IS SUBJECT TO CHANGE AS PER DESIGN/REVISED SANCTION
 * NUMBER OF FLOORS ARE SUBJECT TO CHANGE DEPENDING UPON THE MAXIMUM ALLOWABLE F.A.R. AREA



SITE PLAN

LEGEND

- 1 - ENTRY / EXIT, 2 - WATER BODY / FOUNTAIN, 3 - LOBBY FOR CLUB (TERRACE), 4 - TOWER DROP OFF, 5 - HEALTH CLUB, 6 - SWIMMING POOL, 7 - TERRACE GARDEN, 8 - CAFETERIA,
- 9 - RAMP UP FROM BASEMENT, 10 - RAMP DN TO BASEMENT, 11 - PARKING, 12 - E.V. PARKING, 13 - LANDSCAPE GREEN, 14 - JOGGING TRACK, 15 - SIT-OUT ZONE, 16 - YOGA & MEDITATION,
- 17 - O.A.T., 18 - GAZEBO, 19 - LAWN TENNIS, 20 - BADMINTON COURT, 21 - BASKET BALL COURT, 22 - ENTRY FOR BANQUET, 23 - TOWER ENTRY ON PODIUM, 24 - KIDS PLAY AREA,
- 25 - COMMERCIAL, 26 - U.G.T., 27 - E.S.S., 28 - SER.ROOM, 29 - TERRACE GARDEN (BANQUET ENTRANCE ROOF), 30 - GUARD ROOM, 31 - EMERGENCY GATE, 32 - EXIT FOR CARS



Penthouse

Built-Up Area

4580 sq. ft.
425.53 sq. mtr.

Carpet Area

4330 sq. ft.
402.30 sq. mtr.

Terrace Area

2750 sq. ft.
255.50 sq. mtr.

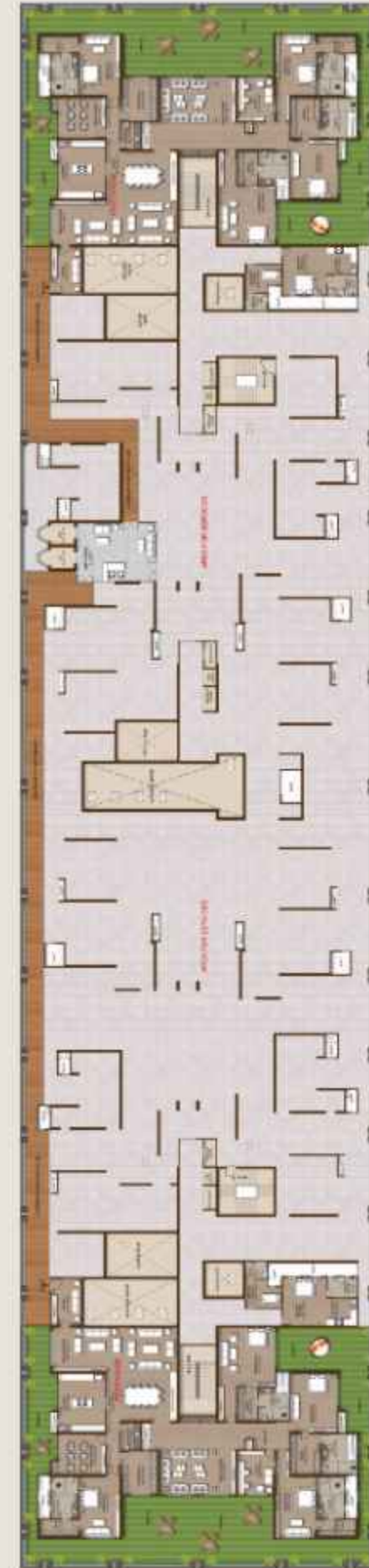
4 Bedrooms + 4 Toilets +
4 Dress + Study +
Powder

Super Area
5725 sq. ft.
531.91 sq. mtr.

- FOYER
- DRAWING ROOM
- DINING
- FAMILY LOUNGE
- HOME THEATRE
- 4 BED ROOMS
- 4 TOILETS
- 4 DRESS
- POW/DER
- STUDY
- STORE/PUJA
- KITCHEN
- TERRACE



PENTHOUSE



CLUSTER







Type-1

4 BHK + Study +
4 Toilets + Store

- FOYER
- DRAWING ROOM
- DINING
- 4 BEDROOMS
- 4 TOILETS
- STUDY/STORE
- KITCHEN
- 4 BALCONIES
- STORE

Super Area
3100 sq. ft.
288.02 sq. mtr.

Built-Up Area
2480 sq. ft.
230.38 sq. mtr.

Carpet Area
1805 sq. ft.
167.75 sq. mtr.

UNIT



CLUSTER



Type-2

4 BHK + 4 Toilets + Store

- DRAWING ROOM
- DINING
- 4 BEDROOMS
- 4 TOILETS
- KITCHEN
- 5 BALCONIES
- STORE

Super Area
2815 sq. ft.
261.54 sq. mtr.

Built-Up Area
2250 sq. ft.
209.14 sq. mtr.

Carpet Area
1636 sq. ft.
152.07 sq. mtr.

UNIT



CLUSTER

Type-3 / Type-4

3 BHK + 3 Toilets + Store

- DRAWING ROOM
- DINING
- 3 BEDROOMS
- 3 TOILETS
- KITCHEN
- 4 BALCONIES
- STORE

Super Area
2190 sq. ft.
203.47 sq. mtr.

Built-Up Area
1750 sq. ft.
162.61 sq. mtr.

Carpet Area
1299 sq. ft.
120.68 sq. mtr.



UNIT



CLUSTER

Embrace beautiful living

Encompassing the beauty of pristine environments in the location of the future,

Attalika offers you the life-long commitment of a serene living experience.

Designed with attention to every detail and keeping in mind your needs, Attalika is

not just a dwelling but a beautiful home to your dreams and aspirations. From ethereal or premium aesthetics to best-in-class structured engineering, Attalika promises to enhance your life. The Attalika project is inspired by the thought of building beautiful and celebrating detailed craftsmanship which is seamlessly immersed in every element, guaranteeing you an "Avant-Garde" experience.

Welcome to a life of luxury, comfort and peace of mind.

Specifications



Structure

Earthquake-resistant RCC structure certified by IIT, high-quality construction materials to be used including primary steel.



Flooring

Vitrified tiles in drawing, dining, bedroom, and kitchen with spacing. The balcony and restrooms have anti-skid ceramic tiles.

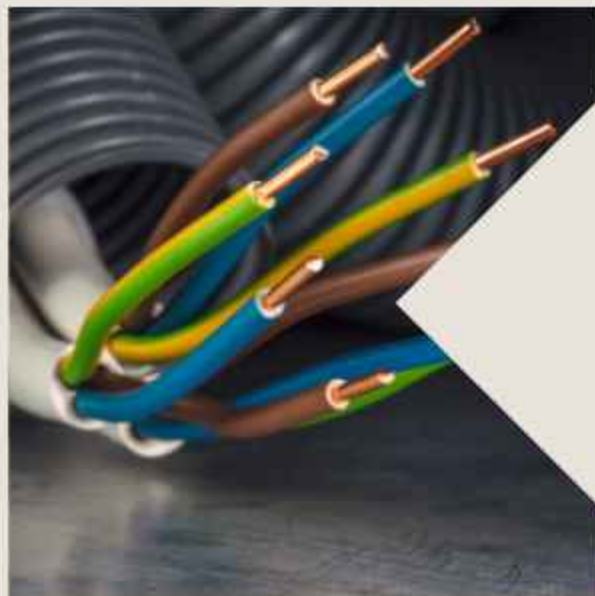
Wall Finish

Premium acrylic emulsion finish including POP punning for interior. The exterior has a waterproof paint coat.



Kitchen

Modern kitchen area equipped with gadgets like chimney & hob with premium stone kitchen counter.



Electrical

Split modern-styled ACs in all bedrooms, dining room & drawing room. Copper wires infused in PVC conduits supported by MCB circuits. Ample light and power points.



Security And Backup

24/7 camera surveillance within the complex. Highly trained security staff. Fire exit as per the law. Door bell video phone.



Woodwork

Wooden wardrobe in all the bedrooms.



Sanitary

Exclusive products with single-lever CP fittings. The washbasin has a granite counter & vanity. Wall-mounted western WC like Kohler or similar.



Facilities

100% power backup*. High-speed elevators. Kids' play area, garden, jogging area and sit-out spaces. Reception and waiting area at the lobby.



Proximity



20 MINS
Hindon Airport

60 MINS
I.G.I Airport



02 MINS
Vaishali Metro Station

05 MINS
Kaushambi Metro Station

20 MINS
Ghaziabad RRTS Meerut Station



05 MINS
Yashoda Super Speciality Hospital

10 MINS
Max Hospital, Vaishali



3-5 MINS
Hotel



10 MINS
Anand Vihar ISBT

30 MINS
Ghaziabad Bus Stop



20 MINS
Ghaziabad Railway Station

30 MINS
Nizamuddin Railway Station

10 MINS
Anand Vihar Railway Station

30 MINS
New Delhi Railway Station

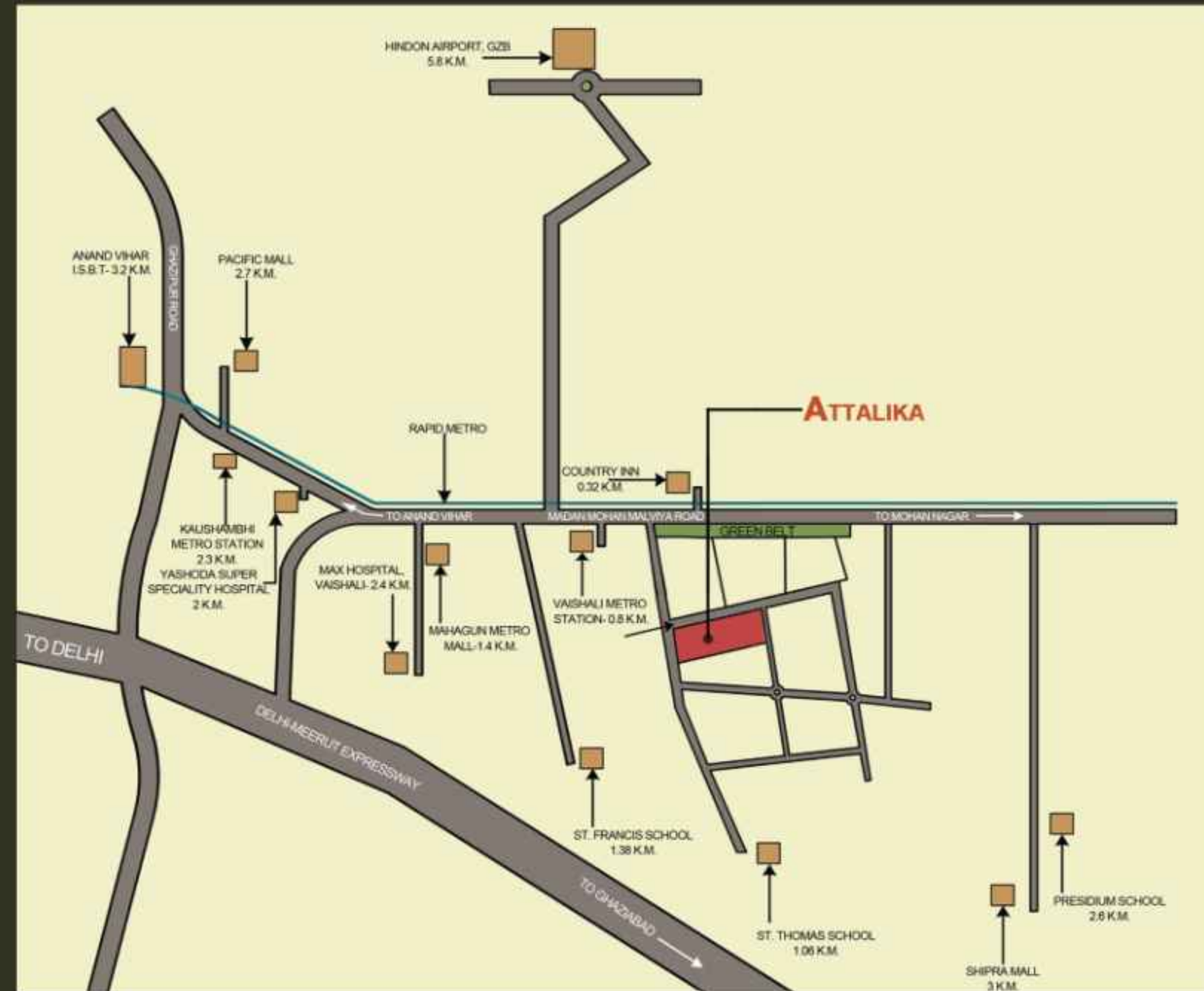


05 MINS
St. Thomas School

08 MINS
St. Francis School

10 MINS
Presidium School

Nearby



Ramprastha Real Estate Pvt. Ltd.
 Ramprastha Greens, Vaishali
 Ghaziabad, Uttar Pradesh - 201012
www.ramprastharealestate.com