

Introducing

Forever 

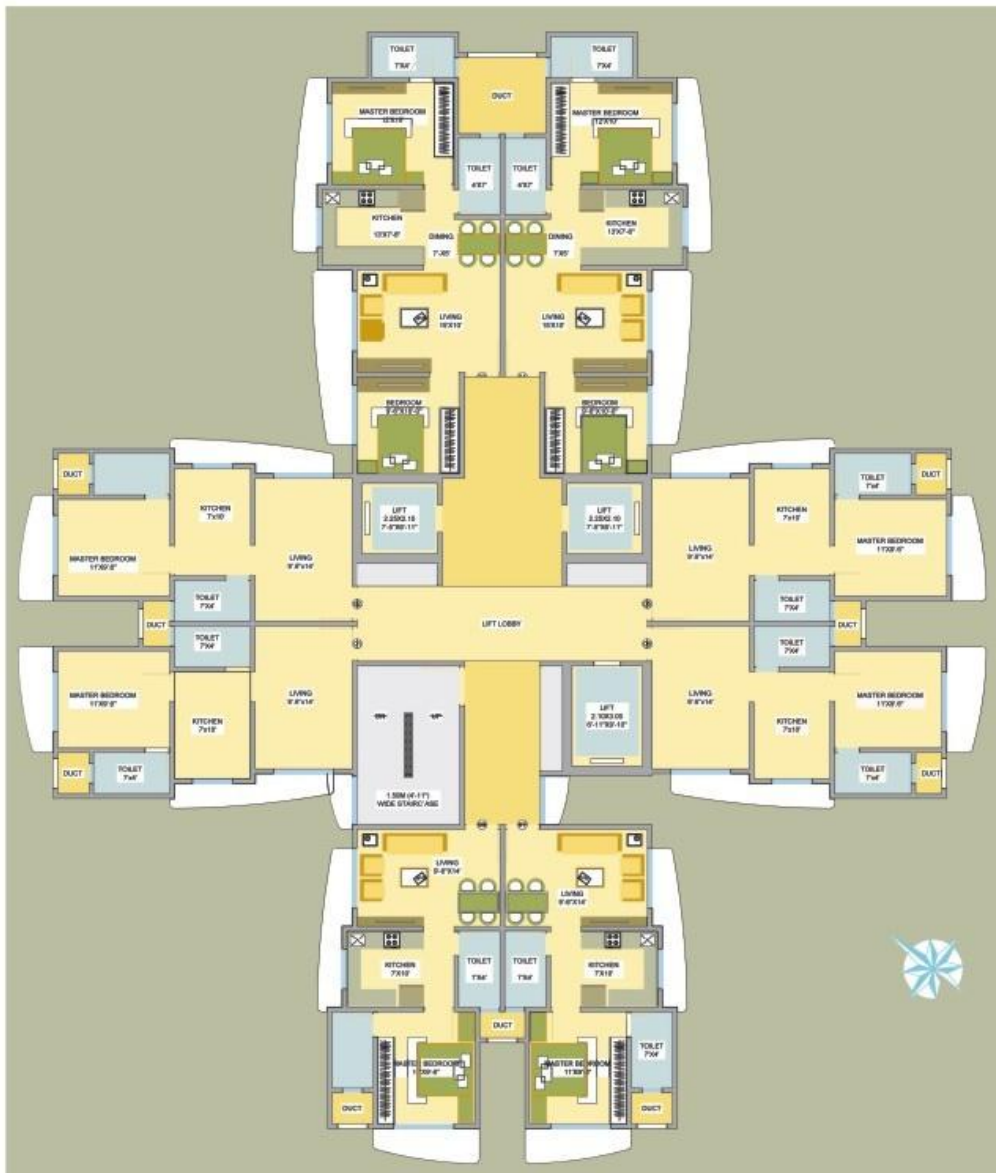
Mumbaikar

Divino (Tower 1) 



Oyster has always stood proud in building a space of trust, quality and excellence. Since 40 years, Oyster Living has a history of providing good investment opportunities apart from constructing buildings with spacious rooms, luxurious amenities at a peaceful surrounding. With this ever appreciating property rates, sustaining the tag of being a Mumbaikar is slowly diminishing. Oyster Living offers a spectacular and uninterrupted view of the nature with well furnished luxurious 1BHK & 2BHK flats at an affordable rate which will maintain your tag of being forever a *Mumbaikar.*

Divino (Tower 1)



AMENITIES



Living & Bedrooms

- Vitrified Flooring
- Extensive Electrical Layout
- Windows with Granite Sills
- Cable, Telephone & AC Points

INTERNAL

Kitchen

- Vitrified Flooring
- Granite Kitchen Platform with Stainless Steel Sink
- Modular Kitchen
- Auxiliary Platform
- Electrical Points for Refrigerator & Mixer Grinder



Windows & Plumbing

- Heavy Section Anodised Powder Coated Sliding Windows with Granite Sills
- Concealed Plumbing with High Quality Fixtures

Electrical

- Concealed Copper Wiring with Extensive Layout
- Modular Switches
- Complete Power Back-Up Facilities for Common Areas like Lobby, Staircase & Lifts



Bathrooms

- Anti-Skid Flooring
- Glazed Dado Tiles
- Quality Sanitary Ware & C.P Fittings
- Hot Water Geyser

EXTERNAL

Eco Deck

- Walking/Jogging Track
- Meditation Deck
- Kids Play Area
- Reflexology Path
- Senior Citizen Seating



Security & Safety

- Grand Entrance Lobby with 24/7 Security
- CCTV Surveillance
- Video Door Phone



Club House

- Gymnasium
- Children's Pool
- Carrom
- Table Tennis
- Steam Room
- Jacuzzi

Landscaping

- Manicured Gardens
- Lush Green Open Spaces
- Flower Beds
- Sit Out Areas
- Picnic Lawns



1 BHK LAYOUT PLAN



2 BHK LAYOUT PLAN



LOCATION MAP



Location Advantage

- Close to Sanjay Gandhi National Park
- Located near Western Express Highway
- 5 Mins walk from Dahisar Railway Station
- 10 Mins walk from Borivali Railway Station
- Hospitals & Clinics located within the radius of 2.3Kms
- Renowned Schools & Colleges are sited diagonally to Oyster Living

Site Address -

Oyster Living, Rawalpada,
Near Gokul Anand Hotel,
Western Express Highway,
Dahisar East, Mumbai - 68.



Office Address: Oyster Living

510, 5th Floor, Western Edge -1, Western Express Highway, Borivali East, Mumbai - 66.

Tel: +91 7045598301/2/4, 22 28703536 • Email: sales@oysterliving.com • www.oysterliving.com