



MARATT

**PIMENTO**





MARATT

SINCE 1946





MARATT

# PIMENTO

TO YOU, HOME. TO OTHERS,  
A REMINDER OF HOW UNFAIR LIFE CAN BE.

---

Twenty-five storied. Impeccably designed.  
Condivillas spanning a gargantuan 4000 square feet each.  
And numbering a measly forty-three.

Spread over 1.5 acres, in JP Nagar, one of Bangalore's newest premium districts.  
Rife with all the trappings of the good life. Not to mention,  
exclusive use of a clutch of spiffy facilities right in the property.

And offered to you, only after completion.  
Just so what you buy into is the kind of fine living you are used to.  
Not empty promises.

All this, from the Maratt Group, a company established in 1946.





# 43

by

## INVITATION.

EVEN THE MET GALA IS LESS EXCLUSIVE.

**MARATT PIMENTO'S  
TWENTY-FIVE LEVELS HOUSE  
A MERE FORTY-THREE CONDOVILLAS.**





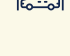
Each laid out in such a way that the unique cylindrical design of the tower creates ample space for exquisite balcony gardens, rather than awkwardly-shaped living areas.

With a choice of single-level or duplex, measuring over 4000 square feet. Flawlessly designed for the perfect mix of privacy, premium lifestyle, and access to nature.

### SINGLE-LEVEL

-  Four elegant, commodious bedrooms, each with an attached bathroom.
-  Two airy and beautifully appointed balcony gardens.
-  Two kitchens - open and closed with a balcony.
-  For optimum privacy, no common walls between condovillas.
-  Exclusive lift lobbies for condovillas on some floors.
-  Four car parks with each condovilla.

### DUPLEX

-  Four impeccably designed spacious bedrooms, each with an attached bathroom.
-  Luxurious, airy, double-height balcony gardens.
-  Two kitchens - open and closed with a balcony.
-  Delightfully airy double-height entrance foyer.
-  Four car parks with each condovilla.

Project completed and open for immediate possession, with all legal approvals obtained.



# PEOPLE WILL SEE GREEN.

NO MATTER WHAT COLOUR YOUR DECOR.

TAKE A LOOK AT THE THOUGHTFUL ATTENTION TO DETAIL  
AND LUXE FACILITIES THAT HAVE GONE INTO THIS PROJECT,  
AND YOU WILL KNOW - ENVY IS INEVITABLE.



Spacious, tony entrance lobby.

Clubhouse with sports and relaxation options  
on the ground floor.

Fully-loaded health club and wellness area  
on the 17th and 18th floor,  
with a stunning double-height  
landscaped garden area.

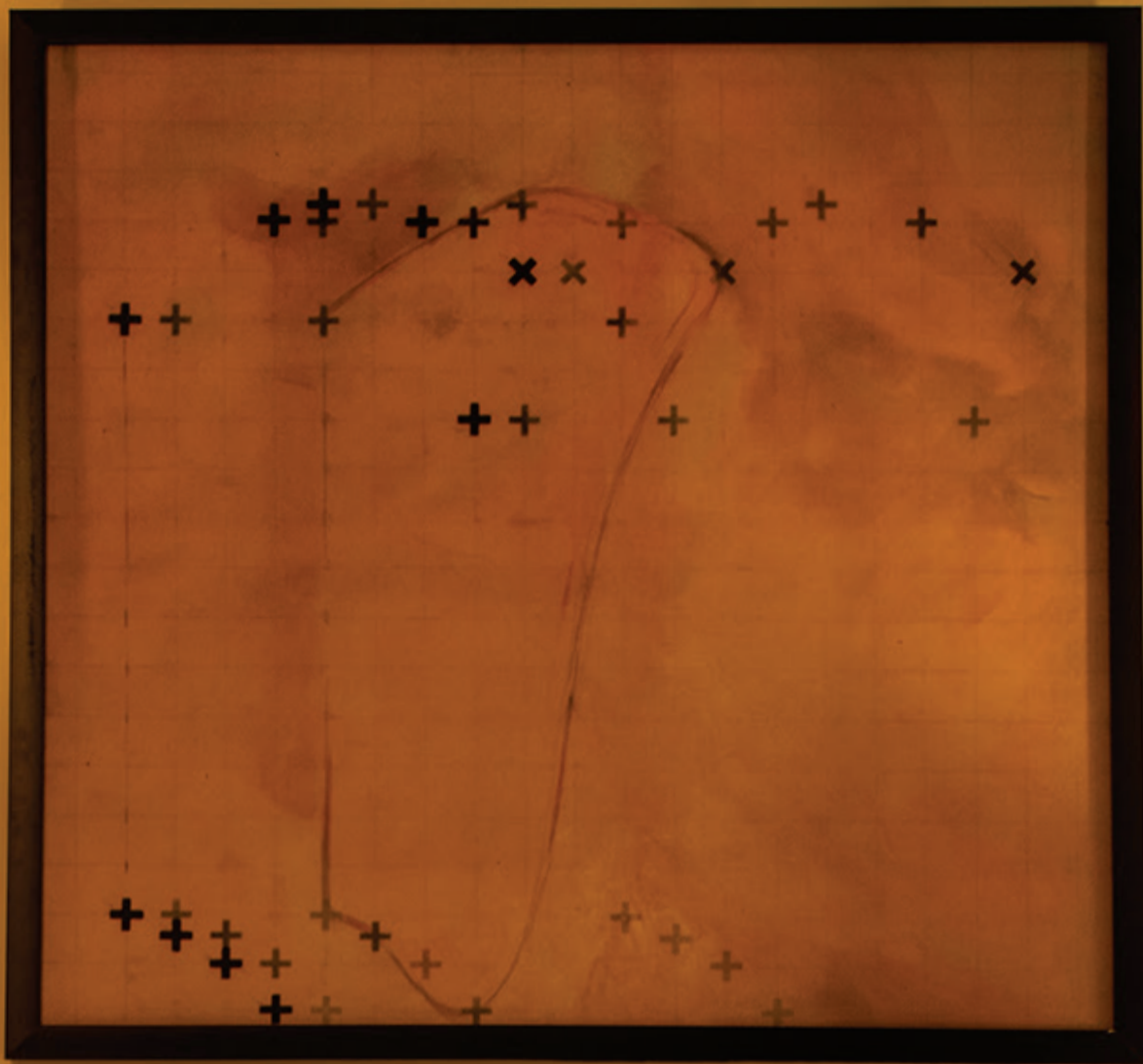
Landscaped and beautifully furnished skylounge  
on the 23<sup>rd</sup> floor with a spectacular  
view of the city skyline.

Over an acre of landscaped gardens  
surrounding the tower.

Well-appointed swimming pool  
with a sundeck.

An outdoor party area with barbeque pits.





## WHOM DO YOU LOOK TO FOR A FUTURE-READY LIFESTYLE?

WHY, A SEVENTY YEAR OLD,  
OF COURSE.

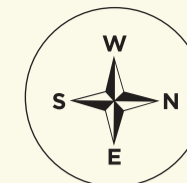
When seventy years are spent in delivering quality in three different industries, it becomes second nature. Founded in 1946, the Maratt Group is a name to reckon with in agro-businesses, plantations, and real estate. And it is this dedication to quality and ethical business practices that Maratt brings to Pimento. Unlike assembly-line names in the undeniably fraught world of realty, Maratt creates boutique projects that focus on delivering on promises, on time, and with the best design, architecture, planning, construction quality, and thoughtful attention to detail.



Image shot in the master bedroom of our duplex condovilla.

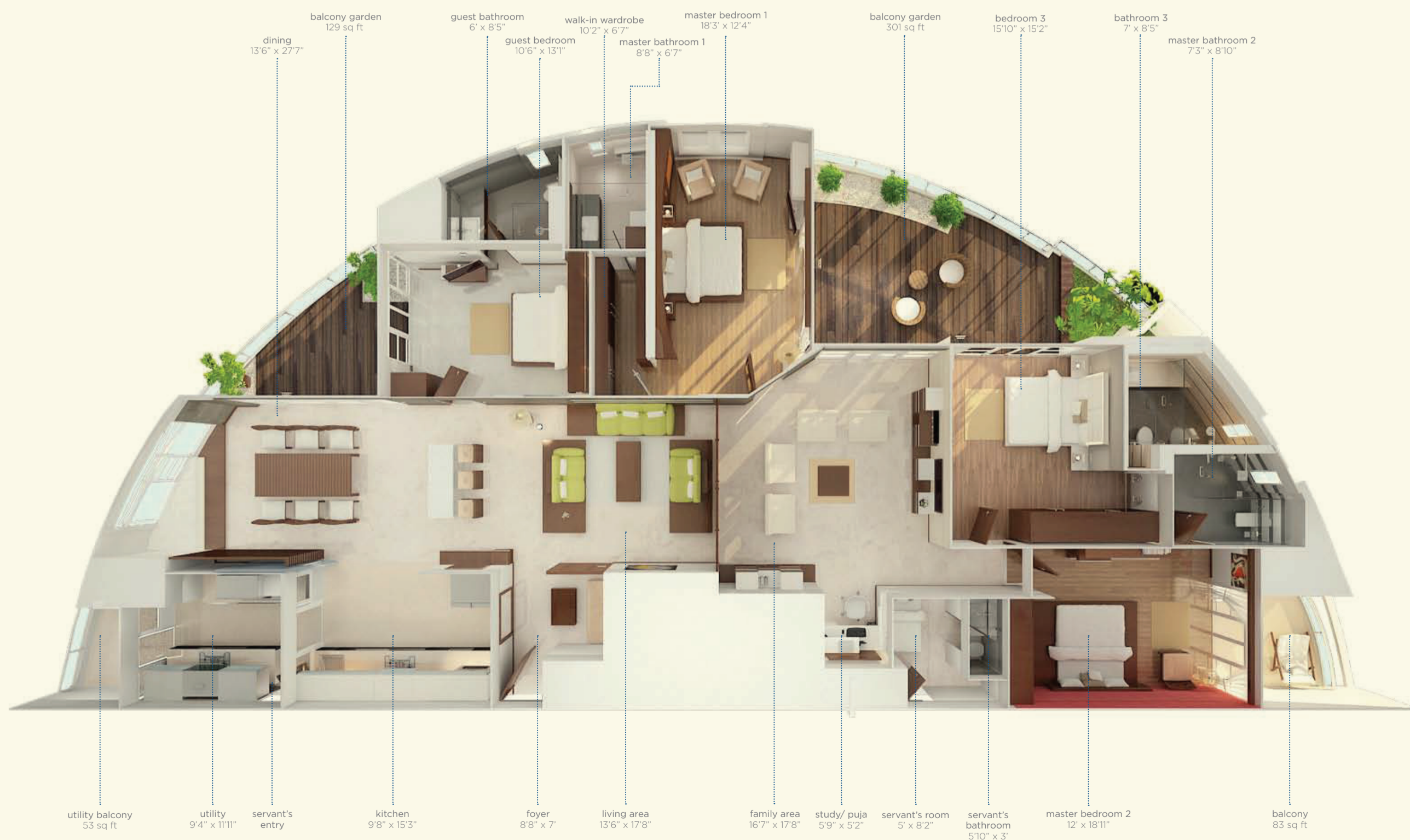


# OUR FLOOR PLANS HAVE A PLAN. TO FLOOR YOU.



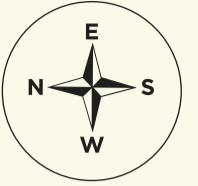
Prepare to be impressed with how impeccably appointed our condovillas are. Each offering the freedom to customise it exactly as you always dreamed your home would be.

## SINGLE LEVEL



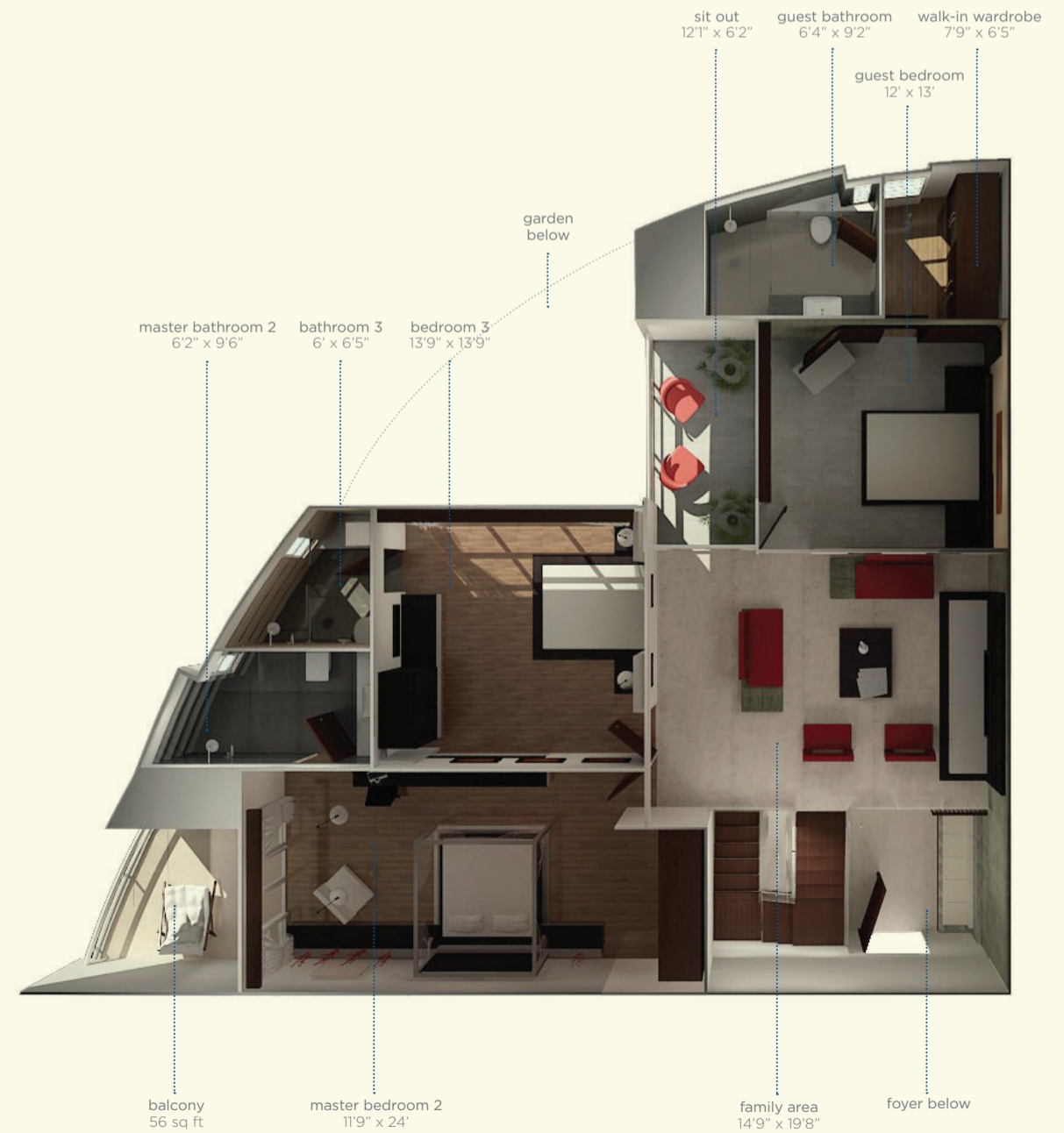


# DUPLEX



## LOWER LEVEL

## UPPER LEVEL





## PERFECTLY LOCATED FOR THE GOOD LIFE. AND FOR A TOUCH OF UNBRIDLED ENVY.

Located in JP Nagar, a mere 6.5 kms from the city centre, with Maratt Pimento comes the best workplaces, international schools and institutes, hospitals, nightlife and dining options, shopping malls, parks and cultural hubs.

1. ROYAL MEENAKSHI MALL
2. VEGA CITY MALL
3. FLORISTA, SHOPPERS STOP
4. GOPALAN INNOVATIVE MALL
5. SWAGATH GARUDA MALL

6. STARBUCKS COFFEE
7. WATSON'S
8. CAFFE PASCUCCI
9. EGG FACTORY
10. BREWSKY

11. RAINBOW CHILDREN'S HOSPITAL
12. APOLLO HOSPITAL
13. FORTIS HOSPITAL

14. GRASSHOPPER
15. SHERWOOD HIGH SCHOOL
16. GREENWOOD HIGH SCHOOL
17. CANDOR INTERNATIONAL SCHOOL
18. SARALA BIRLA ACADEMY
19. RYAN INTERNATIONAL SCHOOL
20. EKYA SCHOOL

21. SRI JAYADEVA INSTITUTE
22. EMC
23. VIVANTA TECHNOLOGIES
24. IBM
25. ACCENTURE
26. ORACLE





