



# Aryan Corner

Plot No. 119, Sector - 8,  
Pushpak Nagar, Navi Mumbai.

Your destination for  
JOY PEACE HAPPINESS



### Project Highlights :

- Clear Title CIDCO Transfer Plot.
- G + 6 Storied Residential Cum Commercial Project.
- Aesthetically Designed 1 BHK Flats.
- Quality Construction with Earthquake Resistant RCC Structure.
- Excellent Planning with no area wastage in all rooms
- Attractively Designed Entrance Lobby.
- Fully Automated Branded Elevator.
- Round the Clock Security.
- Project Approved by major Financial Institutions & Banks



Local Train

### Well Connectivity :

- First City of India to have Most Advanced Hi-tech Infrastructure.
- Situated Amidst Green Hills and Serene Locale of South Navi Mumbai.
- Planned Across 230 Hectares of Land by CIDCO.
- Multimodal Connectivity - BRTS Metro etc.
- 10 mins. from Upcoming Navi Mumbai International Airport.
- 10 mins. from Panvel and Khandeshwar Railway Station.
- 10 mins. from Bamandongri ( Ulwe ) Railway Station.
- 10 mins. from Mumbai Trans Harbour Link (MTHL)
- 15 mins. Approx via JNPT Road.
- Mumbai - Pune Expressway (NH-4B). • 1.5 Hrs from Pune.
- 200 mtrs from Navi Mumbai SEZ.
- Near by all Amenities such as 5 Star Hotel, D-Mart, Advanced Healthcare Center, School, Colleges, Banks, Markets and Sport Complex Upcoming around this Node.



Sea Link



Navi Mumbai International Airport



# ARYAN CORNER

Box Domino's Adidas Gionee WoodLand RETAILS MAX S iPhones Tanjing



1st Floor  
Modular Equipment  
Fitness Center



Master Bedroom



CCTV Camera

# Little Luxuries that define your Abode

## At a Glance

### FLOORING :

- Double charged Vitrified Flooring in all Rooms.
- Full height Wall Tiles in Bathroom / Toilet

### KITCHEN :

- Granite Kitchen Platform.
- Stainless Steel Branded Sink.
- Provision for Refrigerator, Mixer, Aquaguard & Exhaust Fan Points.

### DOORS & WINDOWS :

- Decorative Laminated Flush Main Doors with Wooden Frames.
- Powder Coated Aluminium Sliding Windows with one way Glass.
- Granite Windows Sills.

### WATER :

- Underground & Overhead Water Tank with Adequate Water Storage Capacity.

### BATH & WC :

- Concealed Plumbing with Premium Quality CP Fittings.
- Provision for Hot Water Geyser Point in all Bathrooms.

### WALLS :

- Putty / POP Finish Walls with Acrylic Emulsion Paint.
- Acrylic Exterior Emulsion Paint to all External Walls of Entire Building.

### ELECTRIFICATION :

- Concealed Copper Wiring with Modular Switches of ISI Brand.
- TV, Telephone points in Living Room
- AC Point Provision in Bedroom.



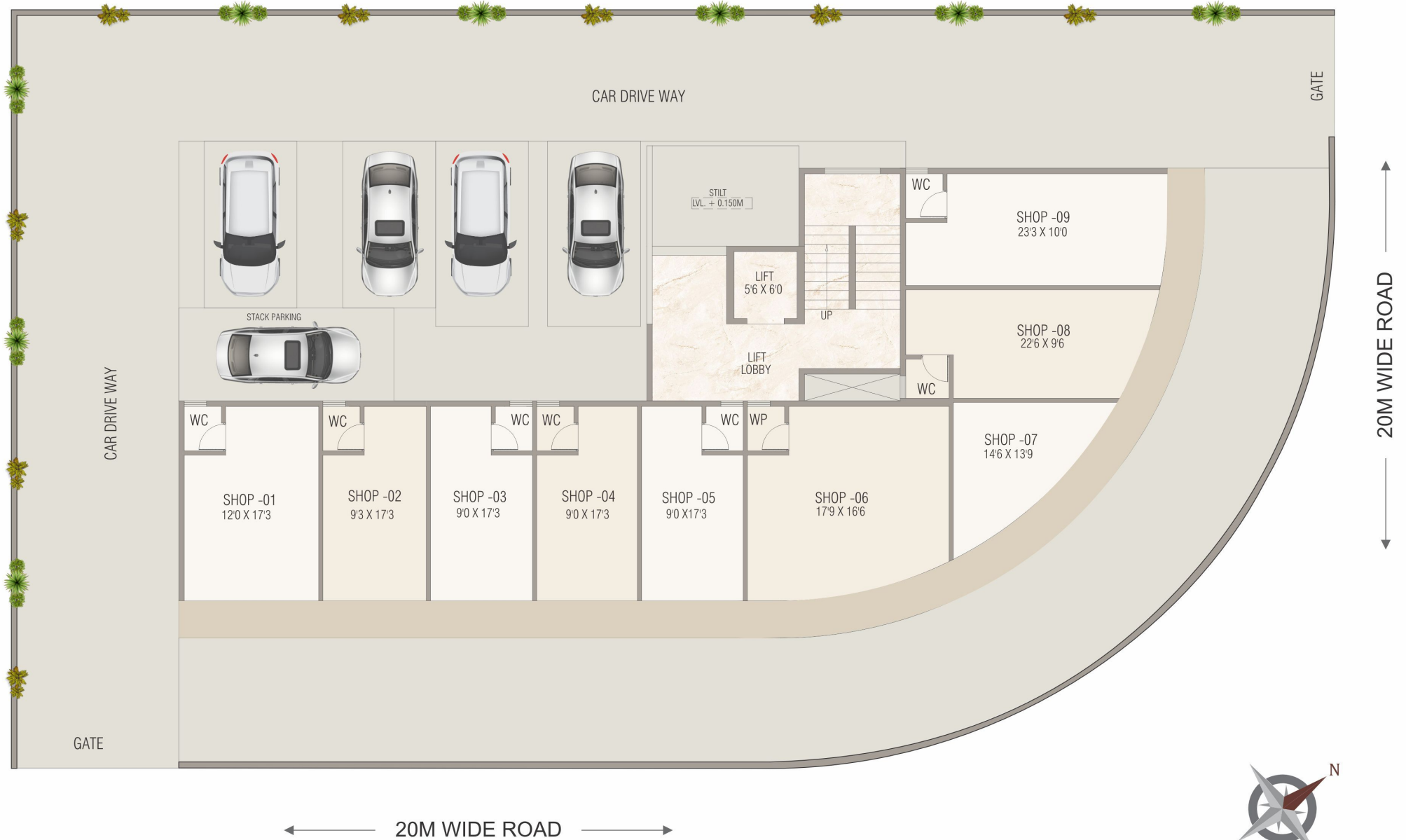
Entrance Lobby



Branded Elevator



# Ground Floor Plan





← 20M WIDE ROAD →

↑ 20M WIDE ROAD ↓

1st Floor Plan

# 2nd to 4th Typical Floor Plan



20M WIDE ROAD

20M WIDE ROAD







← 20M WIDE ROAD →

↑ 20M WIDE ROAD ↓

5th Floor Plan

# 6th Floor Plan



← 20M WIDE ROAD →

↑ 20M WIDE ROAD ↓



# 1 BHK Flat



Note : The 3D Image provided to enable the allottees to visualize the flat with furniture and furnishing. The furniture and furnishing are not provided by the developers and the final look and feel of the flat is dependent on various factors like type/style of interior, furniture layout etc. and the developers have no role in the same.

Isometric View

# Location Map

## Aryan Corner

Plot No. 119, Sec - 8,  
Pushpak Nagar, Dapoli,  
Navi Mumbai - 410206.



A Project by :



📍 **Head Office :**  
Shree-Raj, A 42/30, Sector - 12,  
Kharghar, Navi Mumbai - 410 210.

✉ **Email :** grkinfradevelopments@gmail.com

📞 **For Booking Contact :**  
92233 68103 | 98210 60303

🏗 **Architect :**  
 SATISH AHUJA ARCHITECT

👷 **RCC Consultants :**  
B. S. Sukthankar & Associates

🏠 **MAHARERA Registered No.**  
**P52000052641**  
<https://maharera.mahaonline.gov.in>

RERA Qr Code



**Disclaimer :** The Information in this brochure is indicative of the kind of development that is proposed. It is prepared and issued in good faith and is for guidance only. It does not constitute part of an offer or contract. Subject to the approval of the authorities or in the interest of continuing improvement, the developers reserve the right to change the layout, plans, specifications or features without prior notice or obligation.