

LEBENS

Diligently Designed Homes

Premium
Spacious
3 BHK
**RESIDENTIAL
APARTMENTS
WITH ALL
STATUTORY
COMPLIANCES**

AS PER
VAASTHU



Diligently Designed Homes



Situated on Rajkumar Road, minutes away from Majestic, **Lebens** offers comfortable and joyful living for all ages. A short drive you will find everything within your reach, from malls to cinema halls, from metro station to bus stop, from schools to offices, from entertainment to eat outs and health care centers.

Distances from: Majestic - 3.5 Km | Central Railway Station - 3 Km | K.R. Market - 5 Km | Airport - 36.4 Km

Near by Educational Institutions : Public School - KLE Society | Basaweswara Institutions

Near by Hospitals : Apollo Hospital - Sheshadripuram | Sugana Hospital | Columbia -Asia | ESIC

Near by shopping centers : Mantri Mall | Orion Mall | Navarang Theatre | Golden Heights Mall

SPECIFICATIONS

Structure :

Seismic II compliant RCC framed structure

Wall :

External Walls - 6" solid cement block masonry

Internal Walls / Partitions - 4" solid cement block masonry

Doors :

Main Door: Teakwood frame along with shutters with melemyne spray polish on both sides with Godrej / Europa Lock & SS Fittings.

Other Doors: Flush wooden door with laminate finish on both sides & SS Fittings.

Windows :

UPVC sliding windows, 3 track frames with glass in two tracks with MS grill protection

Flooring :

Italian Marble Flooring in Drawing, Dining

MDF Wooden Flooring in bedrooms

Vitrified Flooring in kitchen

Ceramic tiles in Balconies with 4" skirting

Ankiskid ceramic tiles in Flooring in toilets

Kitchen :

20 mm thick polished granite counter top platform with Stainless steel sink and 2' ceramic dadoing above the granite counter top. Provision for washing machine and LPG Cylinder in utility area.

Toilets :

Ceramic glazed tiles dado up to 7' height. Wall mounted WC with concealed flush tank of make Hind ware / Parry-ware, counter-top wash basin of hind-ware / parry-ware with designer fittings of make Jaguar.

Concealed master control valve in each toilet/bathroom shall be provided from inside. All sanitary and rain water pipes shall be of standard ISI make.

Painting :

Exteriors - Standard plastic emulsion exterior paint

Interiors - Standard emulsion interior paint

Metals - Standard enamel paint

Parking :

Covered car Parking in the Basement Floor

Common Area :

Staircase / lobby with granite. SS handrails for staircase and balconies

Power :

5 KV power supply from BESCOM for each apartment and 65KVa generator backup.

Sanitary and RWP :

Disposal to the Municipal line through STP,

PROVISION FOR RAIN WATER HARVESTING

Electrical :

Quality FRLS copper wires with ISI electrical fittings.

Water Supply :

Potable Bore well and Cauvery Water with CPVC pipeline

Lift :

8 Passengers ISI Make Elevators with DG Backup

Intercom :

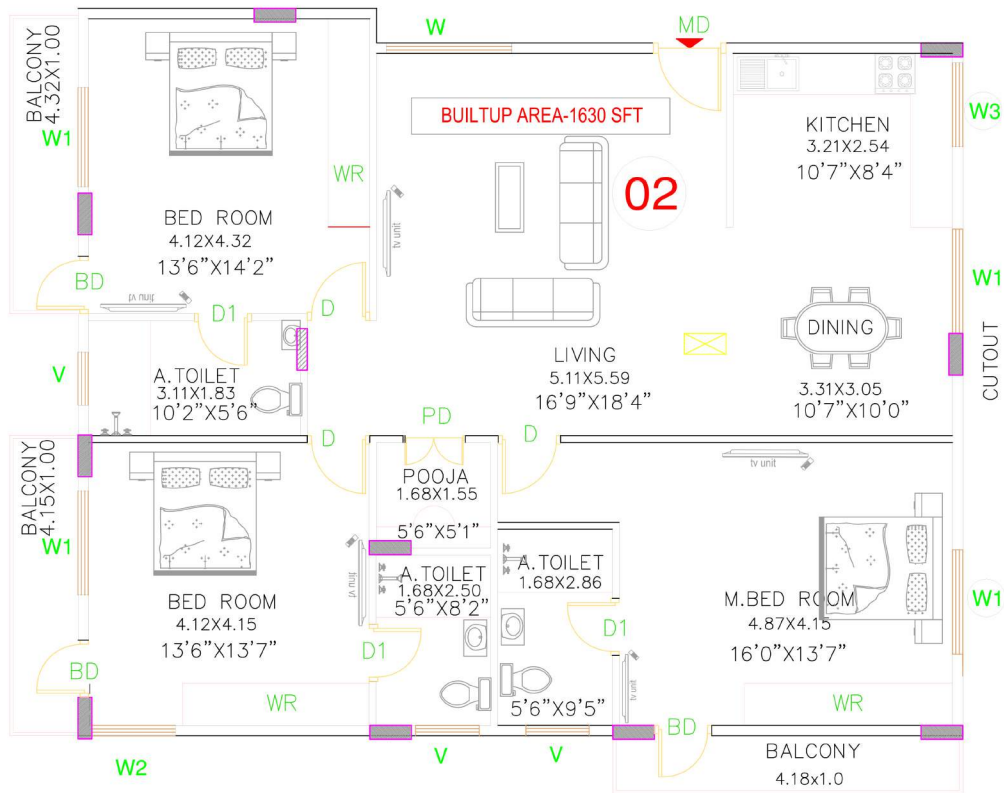
One extension to each flat

Amenities :

Security Post

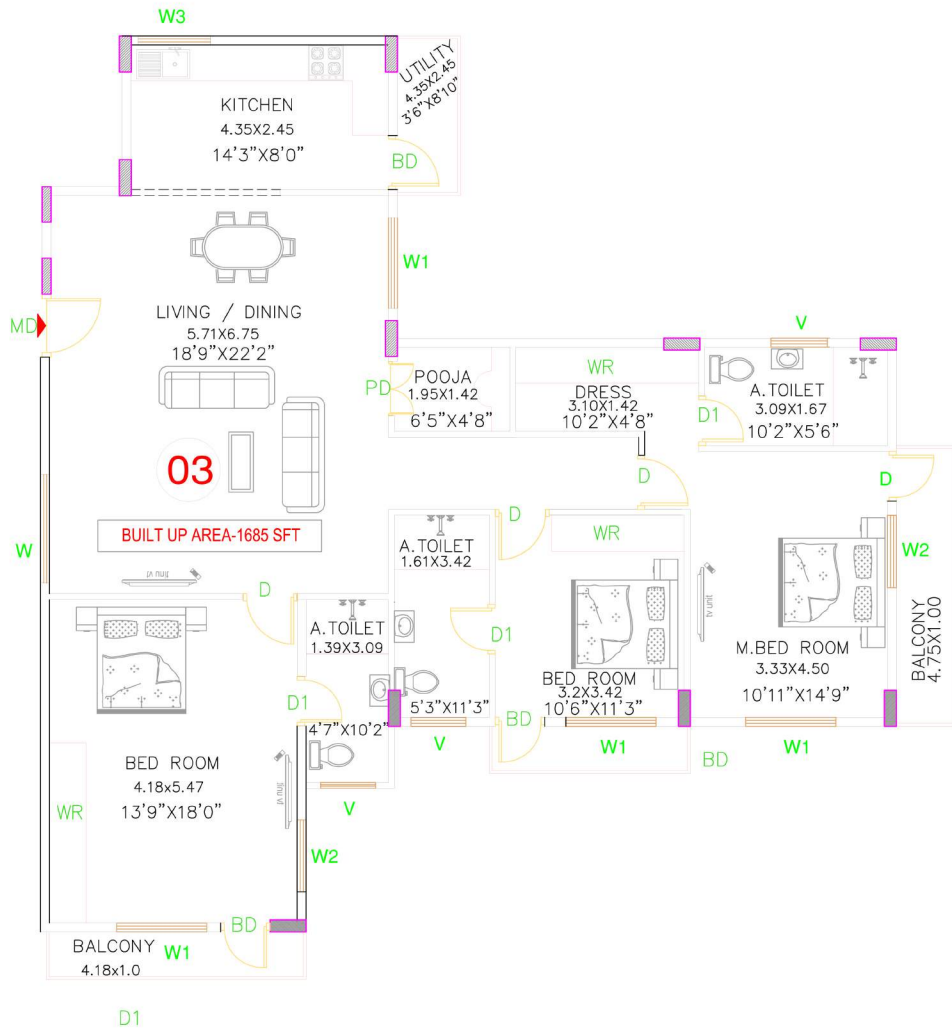
CCTV camera in common area





TYPE - B

TYPE	SUPER BUILT UP AREA
B	1754 SFT



TYPE	SUPER BUILT UP AREA
C	1734 SFT

Location Map



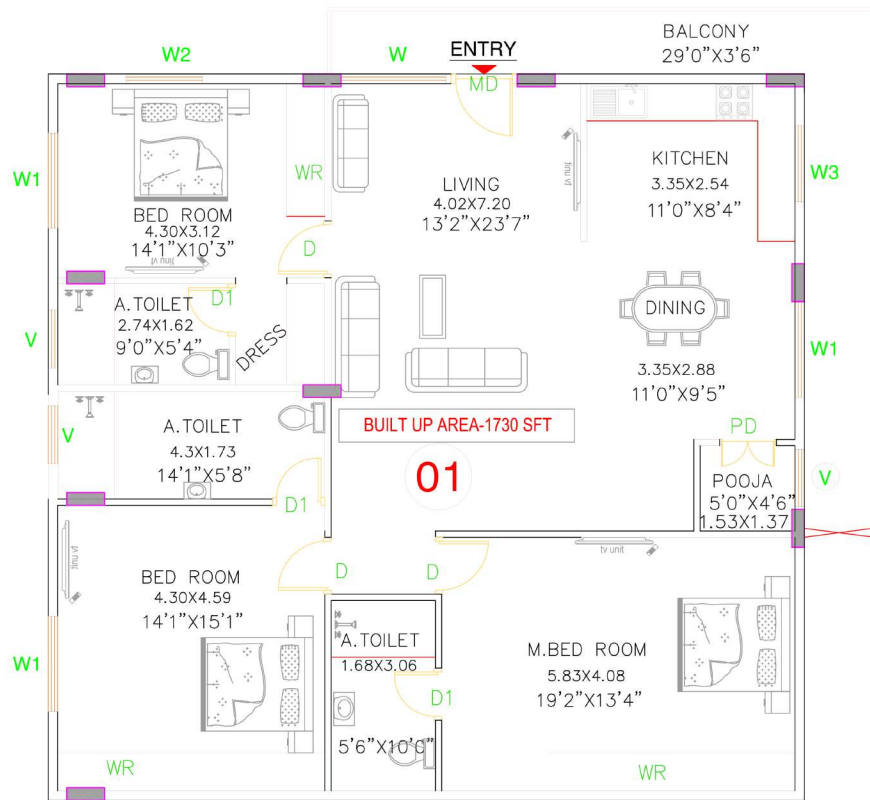
Project Location : Site No. 1701, Rajkumar Road,
Rajajinagar, 2nd Stage, Bangalore

Latitude : 12.993559
Longitude : 77.556486



SREESHAILA INFRA PRIVATE LIMITED

#22, Pamadi Towers, 2nd Floor, 1st Main Road, Gandhinagar, Bangalore 560 009



TYPE - A

TYPE	SUPER BUILT UP AREA
A	1793 SFT