

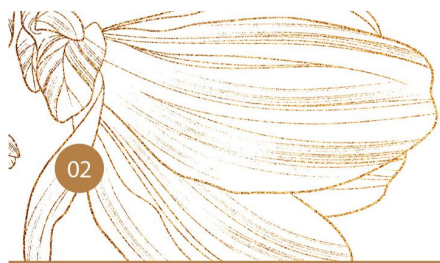


ADITYA *Greencity*



ADITYA GROUP

*Experience The
New Definition Of
Luxury Living!*



ADITYA GREENCITY

WELCOME TO OUR

Aditya Greencity presents a wealth of top-notch amenities aimed at elevating your living experience. From state-of-the-art interiors to elegant lobbies and personalized concierge services, we provide a lavish lifestyle that anticipates and fulfills your every desire.

Nestled in prime locations, Aditya Greencity offers effortless access to entertainment, dining, and shopping. Our properties are strategically situated in safe and desirable neighborhoods, with excellent schools and colleges in close proximity, ensuring a holistic living experience for our residents.



AT ADITYA GROUP,
WE ARE COMMITTED TO DELIVERING
EXCEPTIONAL LIVING EXPERIENCES

Our residences are meticulously crafted with the finest materials and finishes, epitomizing elegance and sophistication. We go above and beyond to surpass the expectations of our residents, ensuring an unparalleled level of comfort.

CONVENIENTLY LOCATED CLOSE TO KEY LANDMARKS

- VP College: 2.5 KM
- Bhigwan Road: 800 Meters
- Government Medical College: 3 KM
- Subhadra Mall: 1.7 KM
- ISCON Temple: 700 Meters
- Sayali Hill Ganpati Temple: 2 KM
- Nakshtra Garden: 2.5 KM
- Police Station: 1.7 KM



AMENITIES

DISCOVER A LIFE OF UNPARALLELED LUXURY AND CONVENIENCE AT ADITYA GREENCITY, WHERE EVERY DETAIL IS METICULOUSLY CURATED TO PROVIDE YOU WITH THE ULTIMATE LIVING EXPERIENCE.

UTILITY AND SECURITY

- Entrance Gate with Security Cabin
- CCTV Cameras in Common Areas
- Boom Barrier for Enhanced Security
- Generator Backup for Lift and common areas.
- Net Metering System for Minimal Monthly Maintenance
- Rainwater Harvesting System

ELECTRICAL & PLUMBING

- ISI Quality Plumbing Fittings
- Concealed copper wiring with circuit breaker (MCB) & modular switches

STRUCTURAL

- Earthquake-Resistant RCC Construction
- Clay Bricks Used for Walls
- Gypsum Plaster and False Ceiling in the Hall

FLOORING AND TILES

- 2x2 Vitrified Tiles for Flooring
- Bathroom and Toilet Tiles Up to Ceiling Level
- Kitchen Tiles Up to Ceiling Level

DOORS AND WINDOWS

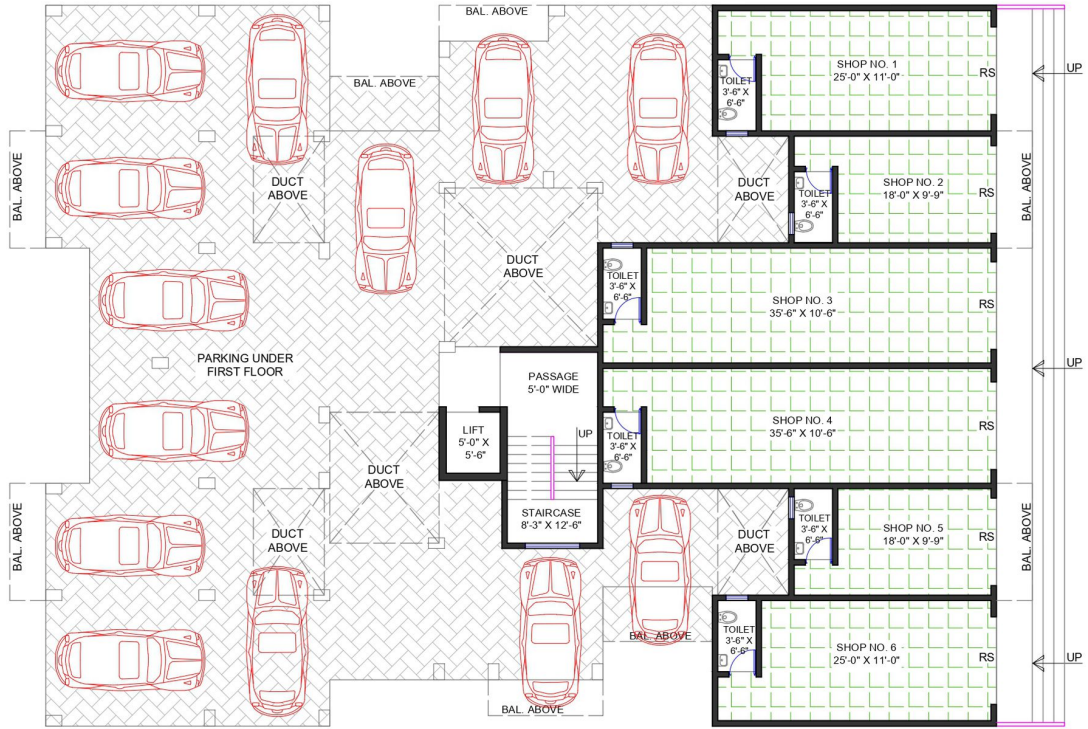
- Laminated Doors with Salwood Door Frames
- Bathroom Door Frame in Granite, PVC Doors
- Granite Frames for Windows, 3-Track

BATHROOM AND KITCHEN

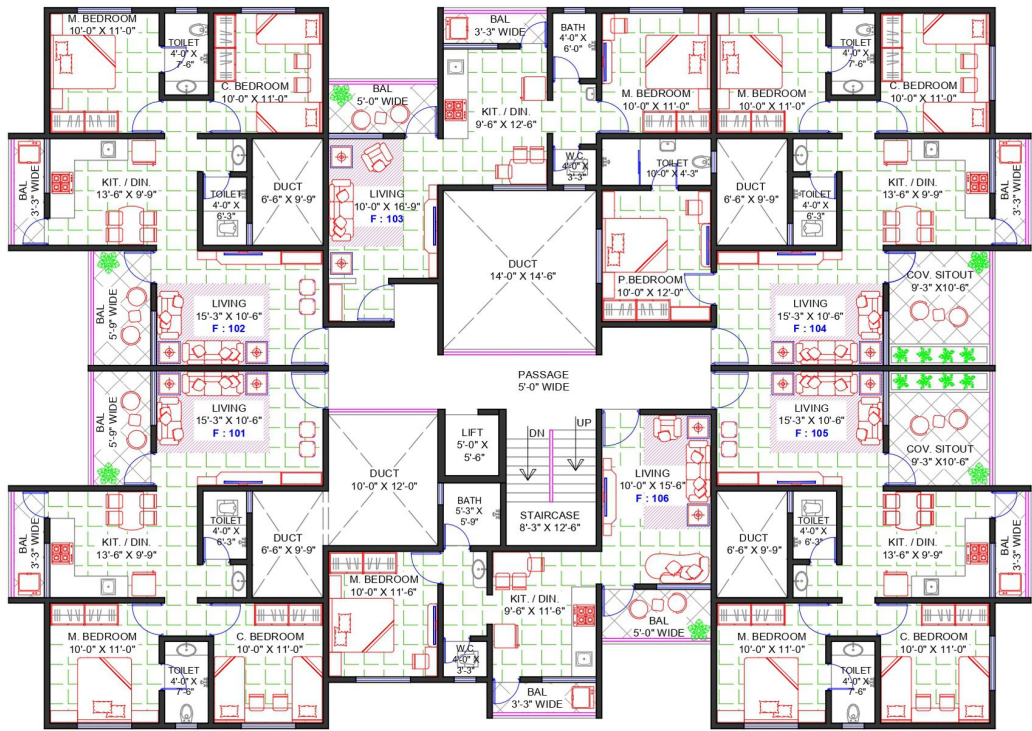
- Stainless Steel Sink with Granite Kitchen Top
- Kitchen Trolley for Convenience



FLOOR PLAN

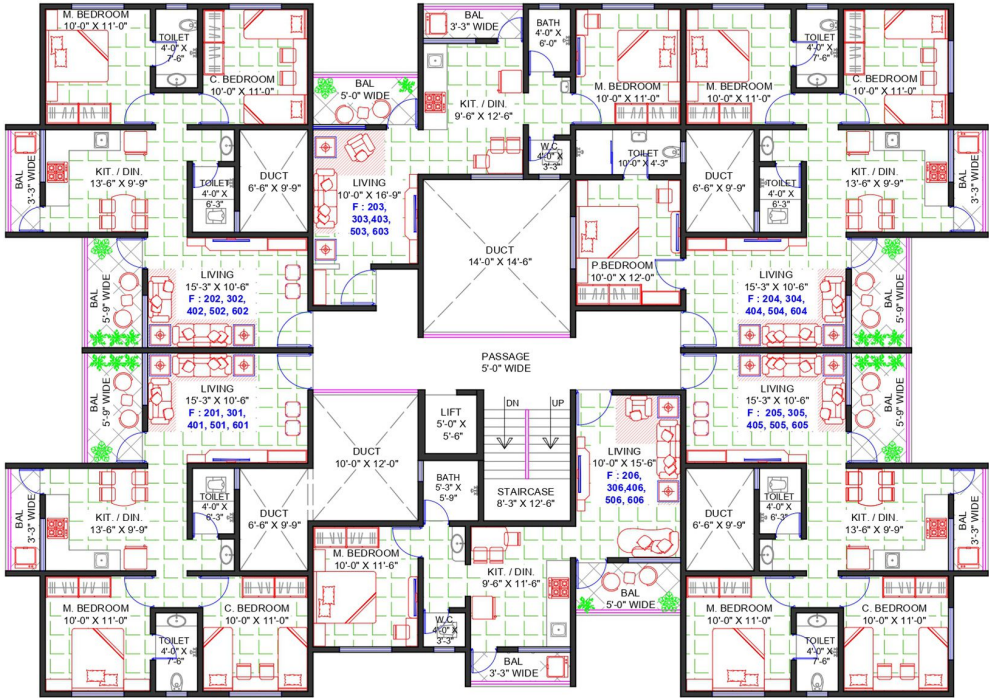


PARKING / GROUND FLOOR PLAN



FIRST FLOOR PLAN

FLOOR PLAN



TYPICAL FLOOR PLAN
(SECOND / THIRD / FOURTH / FIFTH / SIXTH FLOOR)

ADITYA GARDENCITY IS CONSTRUCTED WITH EPITOME CONSTRUCTION STANDARDS

Our residences boast superior finishes, Vastu compliance, and energy efficiency, creating a comfortable and eco-friendly living space that resonates with your values.



3D VIEWS

1 BHK



2 BHK





3D VIEWS



3 BHK

AREA STATEMENT

FLAT NO.	FLAT TYPE	CARPET AREA OF FLAT	CARPET AREA OF BALCONY	TOTAL CARPET AREA OF FLAT	SELEABLE AREA OF FLAT
101	2BHK	59.26 SQ.M.	7.64 SQ.M.	66.90 SQ.M.	935 SQ.FT.
102	2BHK	59.26 SQ.M.	7.64 SQ.M.	66.90 SQ.M.	935 SQ.FT.
103	1BHK	43.64 SQ.M.	6.64 SQ.M.	50.28 SQ.M.	705 SQ.FT.
104	3BHK	84.32 SQ.M.	2.52 SQ.M.	86.84 SQ.M.	1215 SQ.FT.
105	2BHK	68.47 SQ.M.	2.52 SQ.M.	70.99 SQ.M.	995 SQ.FT.
106	1BHK	45.04 SQ.M.	6.64 SQ.M.	51.68 SQ.M.	725 SQ.FT.

SHOP NO.	CARPET AREA OF SHOP	SELEABLE AREA OF FLAT
1, 6	25.89 SQ.M.	390 SQ.FT.
2, 5	16.67 SQ.M.	250 SQ.FT.
3, 4	34.99 SQ.M.	525 SQ.FT.

FLAT NO.	FLAT TYPE	CARPET AREA OF FLAT	CARPET AREA OF BALCONY	TOTAL CARPET AREA OF FLAT	SELEABLE AREA OF FLAT
201, 301, 401, 501, 601	2BHK	59.26 SQ.M.	7.64 SQ.M.	66.90 SQ.M.	935 SQ.FT.
202, 302, 402, 502, 602	2BHK	59.26 SQ.M.	7.64 SQ.M.	66.90 SQ.M.	935 SQ.FT.
203, 303, 403, 503, 603	1BHK	43.64 SQ.M.	6.64 SQ.M.	50.28 SQ.M.	705 SQ.FT.
204, 304, 404, 504, 604	3BHK	75.11 SQ.M.	7.64 SQ.M.	82.75 SQ.M.	1160 SQ.FT.
205, 305, 405, 505, 605	2BHK	59.26 SQ.M.	7.64 SQ.M.	66.90 SQ.M.	935 SQ.FT.
206, 306, 406, 506, 606	1BHK	45.04 SQ.M.	6.64 SQ.M.	51.68 SQ.M.	725 SQ.FT.

ADITYA

Gardencity

Feel free to contact us for more information or to schedule a visit. We're here to assist you every step of the way. Reach out and let's start your journey to your dream home together!

CONTACT



Mr. Haribhau Kale: +91 9822778766
Mr. Yogesh Taware: +91 9850265151
Mr. Arvind Kale: +91 9850219115
Mr. Dhiraj Yele: +91 9881201100



support@adityareality.com
www.adityareality.com



Aditya Greencity
Next to Urban gram
Jalchoi, Baramati - 413102.
Pune (MS) India
Project by: Aditya Promoters



Maharashtra Real Estate Regulatory Authority
(MahaRERA)
Registration number: P52100051787



Scan the QR code above
to visit website

ADITYA GROUP