



MEADOWS
83

VIKHROLI (WEST)



A LUXURY – COMFORTABLE,
A VIEW TREE-MENDOUS.



LIVE IN AN EXQUISITE LOCATION THAT NURTURES SOULFUL LIVING



Vikhroli, located on the northeastern outskirts of Mumbai, is home to one of Maharashtra's largest mangrove forests. It is expected to be the single largest real estate development in the heart of Mumbai over the next several years, with tremendous growth potential both from the end user and investor standpoint.

This precinct is located in the core of Mumbai's physical geography. It boasts the best urban connectivity the city has to offer, running right along the Eastern Express Highway, which connects the city's north, south, and east, and LBS marg, which connects with the city's western suburbs. As a result, all regions of the city are easily accessible.



SHOPPING

- Central Mall - 1.4 Km
- R City Mall - 2.2 Km
- D-Mart - 2.5 Km
- Heera Panna Shopping Centre - 4.8 Km
- Phoenix Marketcity - 5.9 Km



MULTIPLEXES

- Inox - 2.4 Km
- Carnival Cinema - 2.6 Km
- PVR - 6.5 Km
- Cinapolis - 3.5 Km



CONNECTIVITY

- Proposed Metro Station - 600 Mtrs
- Vikhroli Railway Station - 400 Mtrs
- Johgeshwari - Vikhroli Link Road - 1.4 Km
- Eastern Express Highway - 4.0 Km
- International Airport - 8.0 Km



LIVE IN THE MIDST OF A LUSCIOUS GREEN SETTING

Meadows 83 is a thoughtfully built commercial and residential edifice with 1 BHK and 2 BHK flats ranging from the 5th to the 22nd floors offering a deck view from inside your 2 bhk home, located in the heart of Mumbai - Vikhroli, Meadows 83 provides connectivity to an urban lifestyle whilst living in the realm of nature. Meadows 83 is equipped with basic amenities like security system that includes 24x7 CCTV surveillance, Intercom facility, video door phone with speaker and a fire control system for the residents' convenience and security. It features a tastefully constructed rooftop with amenities that provide the relaxation and entertainment for one and all, from kids to the elderlies.

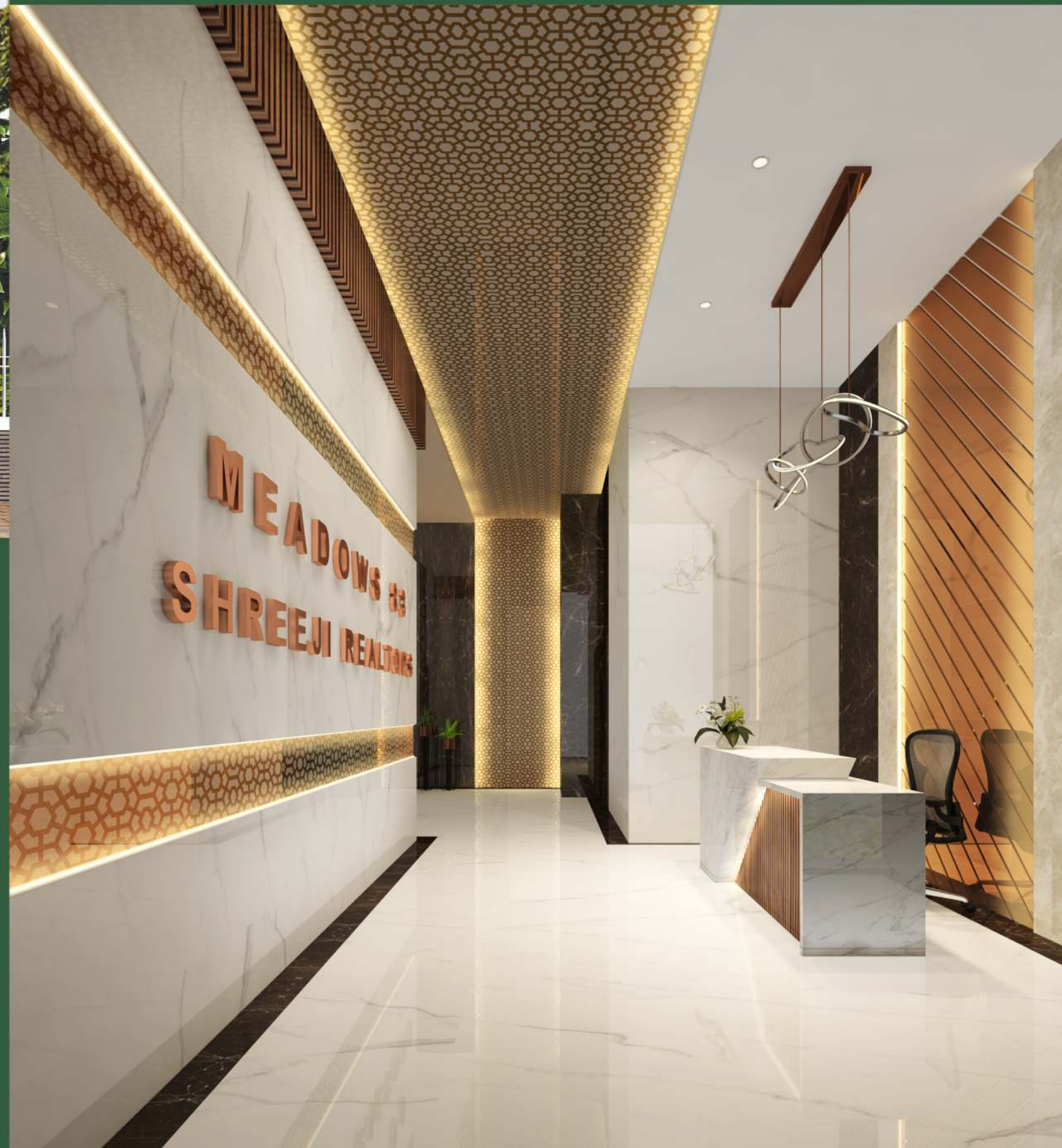
WAKE UP TO A
BREATH TAKING
DECK VIEW,
MAKING WAY TO A
PRODUCTIVE DAY





GREET YOUR GUESTS
WITH CLASS & ELEGANCE.
LET THE WELCOME
SET THE MOOD

Meadows 83's showcases an entrance that personifies magnificence, and sets the tone of the inside infrastructure having a spectacular lifestyle.





A ROOFTOP SIGNIFYING LUXURY



SWIMMING POOL



YOGA & MEDITATION SPACE



CORNER FOR YOUR
EVENING CONVERSATIONS



JOGGING TRACK



BUILD A HEALTHY LIFESTYLE

FITNESS CENTER



RELAXATION ZONE FOR THE GOLDEN AGERS

SENIOR CITIZEN'S CORNER

A BLISS FOR THE KIDS

CHILDREN'S PLAY AREA



TOSS THE DICE / PLAY AND LEARN

INDOOR GAMES





**6TH, 8TH & 9TH
FLOOR PLAN**

**1 & 2 BHK
FLATS**





**10TH - 13TH, 15TH - 20TH & 22ND
FLOOR PLAN**

**1 BHK & 2 BHK
WITH DECK FLATS**



ISOMETRIC VIEW



1 BHK
437 SQ.FT.



2 BHK
626 SQ.FT.



1 BHK
439 SQ.FT.



2 BHK
664 SQ.FT.
(WITH DECK)

NIGHT
SIGHT



INTERNAL AMENITIES



FLOORING

- Marble flooring in Entrance Lobby
- Vitrified flooring in all Rooms & Kitchen
- Anti-skid designer tiles in Bathroom & Toilets



KITCHEN

- Provision for Gas Pipeline
- Granite Platform with S.S. Sink
- Provision for Exhaust Fan



WINDOWS & DOORS

- Powder Coated Aluminum Sliding Window with Granite Framing
- Designer Door Fittings of Reputed Brand



BATHROOM

- Sanitary Ware of Reputed Brands
- C.P. Fittings of Reputed Brand
- Instant Geyzer



ELECTRIC FITTINGS

- Concealed Copper Wiring with Branded Switches
- Provision for Telephone, Lights, Fans & TV Points.



SECURITY

- CCTV Surveillance in Lift & Common Areas.
- Intercom Facility
- Video Door Phone with Speaker
- Fire Fighting System

Project by :



Corporate Office :

B2, Ginni Apartment, Rani Sati Marg, Malad (East), Mumbai - 400 097.

• E-mail : info@shreejirealtors.in

Site Office :

Meadows 83, Lal Bahadur Shastri Rd., HMPL Surya Nagar, Vikhroli (West), Mumbai - 400 083.

Architect

V P Consultants

Design Architect

Somaiya & Associates

RCC Consultant

Unisteps Consulting

Legal Advisor

Markand Gandhi & Co.



MAHA RERA REGN. NO. P51800048486 | Available at : www.maharera.mahaonline.gov.in

Disclaimer : The plans, specification, elevation, conceptual designs, visuals, images, dimensions, photograph, furniture, fixtures, amenities, facilities etc., are strictly provided for representation purpose only and are subject to requisite approvals from the competent authorities unless otherwise stated herein. This does not constitute an offer and/or contract of any nature between the company and the prospective purchaser/customers has independently satisfied himself before any conclusive decision. All brand names and trademarks stands reserved. *T & C Apply.

